



MODELO / MODEL

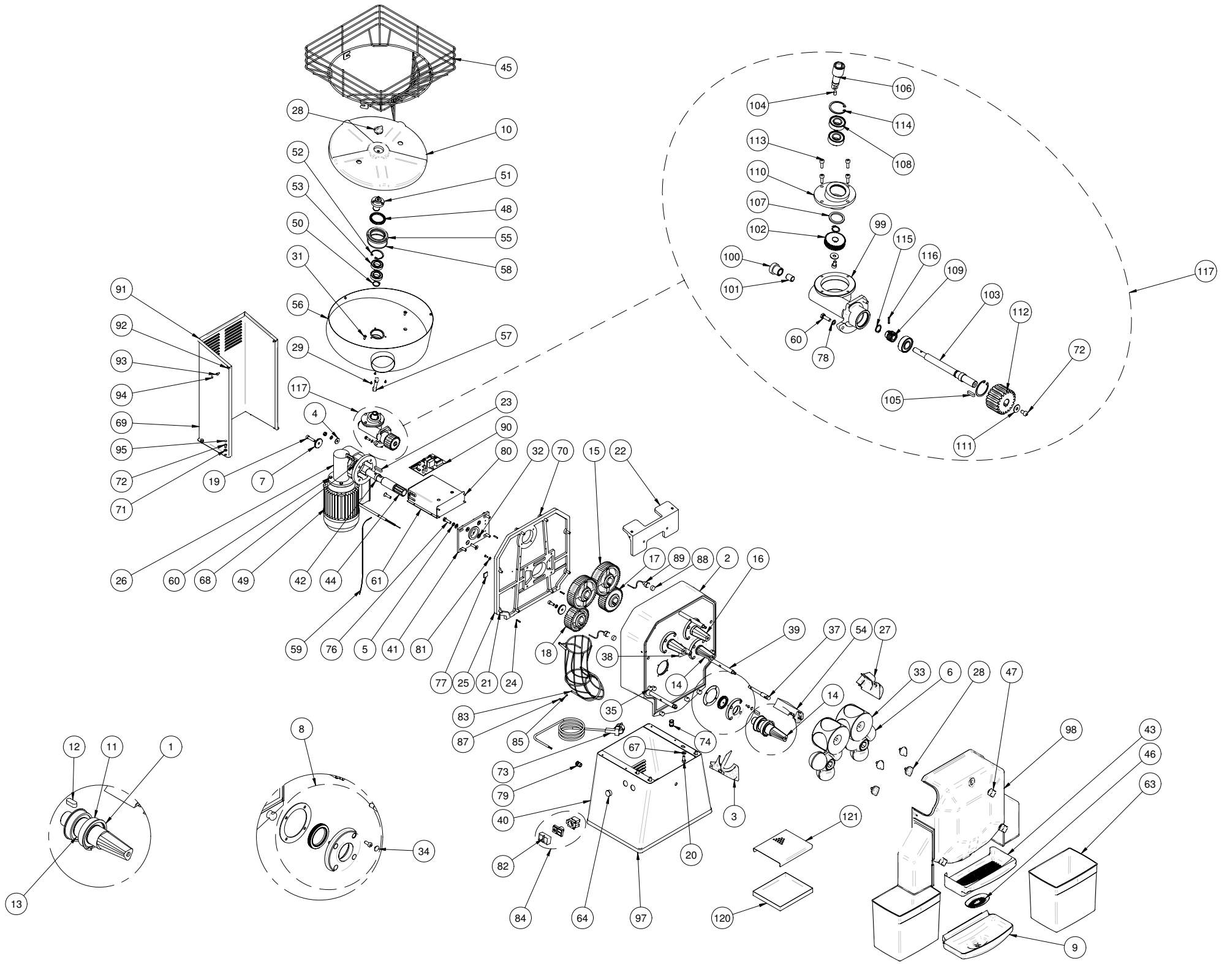
**ZUMEX SPEED**

Desde / from 227876 hasta / to 229284

**Rev 00**

INDICE / INDEX

Vista explosionada / Exploded view.....	Pag 2
Lista de piezas / Part list.....	Pag 3 - 6
Esquema electrónico / Electronic diagram .....	Pag 7



NÚMERO DE PIEZA PART NUMBER	REFERENCIA REFERENCE	COMPUESTO POR COMPOSED BY	DESCRIPCIÓN	DESCRIPTION	CANTIDAD POR MÁQUINA QUANTITY PER MACHINE	LOTE DISTRIBUCION DISTRIBUTION LOT
1	33.0015.000		ANILLO SEEGER EXPRIMIDORAS	JUICERS SEEGER RING KIT	2	70
		4 Ud 130.0013.062	ANILLO SEG. DIN 472 I-62	SECURITY RING 472 I-62		
2	33.1022.000		CARTER CLASIC F/INOX.	GEARBOX W/ STAINLESS STEEL FRONT	1	1
		1 Ud 13.160.100	CARTER G PINTADO 16T C/F	16 SCREWS PAINTED G HOUSING W/F		
		1 Ud 200.0342.000	FRONTAL INOX CLASIC	STAINLESS STEEL CLASSIC FRONTAL PLATE		
		8 Ud 130.0013.062	ANILLO SEG. DIN 472 I-62	SECURITY RING 472 I-62		
		8 Ud 140.0201.035	RODAMIENTO 6007 2RS	6007 2RS BEARING		
	4 Ud 200.1101.001	SEPARADOR INTERIOR	INTERNAL SEPARATOR			
3	33.0002.002		CUÑA EXTRACTORA IZQUIERDA ASP	ASP LEFT PEEL EJECTOR	1	48
5	105.0911.008		ARANDELA DIN 127 D8 I	DIN 127 D8 I WASHER	13	1
6	33.0031.000		TAMBOR MACHO (2 Uds)	LOWER PLASTIC PRESSING UNIT (2 Uts)	2	2
7	200.1110.001		ARANDELA PIÑON	PINION WASHER	5	1
8	33.0010.000		RETEN C/ TORNILLOS v2.0	FASTENER W/SCREWS v2.0	4	48
		1 Ud 200.3363.100	SOPORTE RETEN	FASTENER SUPPORT		
		1 Ud 171.3001.000	JUNTA SOPORTE RETEN	FASTENER SUPPORT JOINT		
		4 Ud 200.3364.000	TAPON SOPORTE RETEN	FASTENER SUPPORT CAP		
		4 Ud 100.0903.085	TORNILLO DIN 912 M-5x12 I	DIN 912 M-5x12 I SCREW		
	1 Ud 170.0001.002	RETEN MUELLE INOX 40x52x7 DL	INOX SPRING FAST.40x52x7 DL			
9	33.0068.000		CUBETA ZUMO SPEED	SPEED JUICE TRAY	1	12
		1 Ud 260.0201.001	CUBETA ZUMO CLASIC PLAS v 1.1	CLAS PL. JUICE FILTER HOLDER V1.1		
		1 Ud 220.4710.000	PERFIL SILICONA 190x4.1x4.5	SILICONE PROFILE 190x4.1x4.5		
10	33.0034.000		PLATO ALIMENTADOR SPEED	SPEED FEEDER PLATE	1	1
11	33.0011.000		RODAMIENTOS 6007 (2uds)	6007 2RS BEARINGS (2uts)	4	16
		2 Ud 140.0201.035	RODAMIENTO 6007 2RS	6007 2RS BEARING		
12	115.0000.015		CHAVETA 10 x 8 x 25	BOLT 10 x 8 x 25	4	1
13	33.0025.000		SEPARADOR RODAMIENTOS	BEARINGS SEPARATOR KIT	1	10
		4 Ud 200.1101.001	SEPARADOR INTERIOR	INTERNAL SEPARATOR		
14	13.180.001		EJE TAMBOR MACHO PLÁST. v.2.1	LOWER PLASTIC PRESSING SHAFT	2	1
15	33.0173.000		PIÑON GRANDE PLASTICO	BIG PLASTIC GEAR	2	1
16	13.190.001		EJE TAMBOR HEMBRA PLÁS.v.2.1	UPPER PLASTIC PRESSING SHAFT v.2.1	2	1
17	33.0175.000		PIÑON PEQUEÑO METALICO	SMALL METALLIC GEAR	1	1
18	33.0174.000		PIÑON PEQUEÑO PLASTICO	SMALL PLASTIC GEAR	1	1
19	100.0903.130		TORNILLO DIN 912 M-8x35 I	DIN 912 M-8x35 I SCREW	1	1
20	100.0903.127		TORNILLO DIN 912 M-8x20 I	DIN 912 M-8X20 I SCREW	8	1

21	100.0903.128		TORNILLO DIN 912 M-8x25 I.	DIN 912 M-8x25 I. SCREW	6	1
22	13.221.000		SOPORTE ALIMENTADOR	FEEDER SUPPORT	1	1
23	33.0161.000		CHAVETA EJE REDUCTOR	SHAFT REDUCER BOLT	1	1
24	135.0017.067		PAS/ELAST.DIN 1481 D4x20	DIN 1481 D4X20 ELASTIC FAST.	3	1
25	13.170.001		TAPA CARTER G PINTADA	GEARING HOUSE COVER	1	1
26	33.0121.000		REDUCTOR SPEED 1:35	SPEED REDUCER 1:35	1	1
27	33.0001.002		CUÑA EXTRACTORA DERECHA ASP	ASP RIGHT PEEL EJECTOR	1	48
28	33.0067.000		VOLANTE POLIUNTA (2uds)	SECURING KNOBS + RUBBER JOINT (2uts)	2	25
		2 Ud 200.3306.004	VOLANTE PLASTICO INY TPE	TPE INJECT. SECURING KNOB		
29	100.0919.018		TORNILLO DIN 7981B 3,5x9,5 I	DIN 7981B 3,5x9,5 I SCREW	3	1
31	100.0909.106		TORNILLO DIN 7991 M-6x15 I.	DIN 7991 M-6x15 I. SCREW	2	1
32	100.0909.129		TORNILLO DIN 7991 M-8x30 I	DIN 7991 M-8x30 I SCREW	5	1
33	33.0024.001		TAMBOR HEMBRA ASP (2uds)	ASP UPPER PLASTIC PRESSING UNIT (2uts)	1	1
		2 Ud 225.3307.001	TAMBOR HEMBRA PL.NARANJA	ORANGE UPPER PRESSING UNIT		
34	33.0000.000		TAPONES SOPORTE RETEN	FASTENER SUPPORT CAPS	16	1
35	33.0006.000		PIVOTE CUÑA EXTRACTORA (2uds)	PEEL EJECTORS PIVOT HOLDERS (2uts)	2	25
		2 Ud 225.3320.000	SOPORTE CUÑA EXTRACTORA	PEEL EJECTOR SUPPORT		
37	200.0142.000		VARILLA PORTACUCHILLA	BLADE SUPPORT ROD	1	1
38	225.3305.000		TRASERA PORTACUCHILLAS	BACK BLADE SUPPORT	1	1
39	200.0131.003		TOPE SUJECCION CUBIERTA	UPPER SECURING ROD	3	1
40	33.0069.000		BASE SPEED INOX TAPON JUNTA	SPEED STAINLESS STEEL BASE	1	1
		1 Ud 220.0203.100	BASE CLASIC INOX UL CON PLIEGUE	SS POLISHED CLASIC BASE UL		
		1 Ud 180.0000.023	TAPON GPN300 F211 NEGRO	D23 PLASTIC CAP		
		1,38m 220.4707.001	PERFIL BASE	BASE PROTECTIVE STRIP		
41	200.2511.001		BRIDA INTERMEDIA AJUSTABLE	ADJUSTABLE INTERMEDIATE CLAMP	1	1
42	200.1125.001		SUPLEMENTO TECNO 30x25x9	30x25x9 SUPPLEMENT SHAFT TECNO	1	1
43	33.0096.000		FILTRO CUBETA SPEED	SPEED JUICE TRAY FILTER	1	1
44	250.1114.001		EJE REDUCTOR Z-10	Z-10 REDUCER SHAFT	1	1
45	33.0098.000		CESTA ALIMENTADOR SPEED	SPEED FEEDER BASKET	1	1
46	33.0097.000		SUBFILTRO CUBETA SPEED	SPEED JUICE TRAY INNER FILTER	1	1
47	33.0004.000		POMO HEMBRA PLASTICO (2uds)	PLASTIC RETAINING KNOB (2uts)	2	25
		2 Ud 13.230.000	POMO P/I	P/I RETAINING KNOB		
48	170.0006.001		RETEN 50x62x7 DL I.	50x62x7 DL I. FASTENER	1	1
49	33.0110.000		MOTOR EXPRIMIDOR 230V	230V JUICERS MOTOR	1	1
	33.0111.000		MOTOR EXPRIMIDOR 115V	** 115V JUICERS MOTOR **	1	1
50	130.0012.025		ANILLO SEG. DIN 471 E-25	SECURITY RING DIN 471 E-25	1	1
51	13.240.002		EJE PLATO	PLATE SHAFT	1	1
52	130.0013.047		ANILLO SEG. DIN 472 I-47	SECURITY RING DIN 472 I-47	1	1
53	140.0201.025		RODAMIENTO 6005 2RS	6005 2RS BEARING	2	1
54	33.0013.001		PORTACUCHILLA ASP v2.1	ASP BLADE HOLDER V2.1	1	10
55	200.3332.001		PORTA-RETEN ALIMENTADOR	FEEDER FASTENER HOLDER	1	1
56	245.0203.003		CUERPO ALIMENTAD.BAYONETA	BASKET HOLDER BAYONET	1	1
57	33.0016.000		ROTULA ALIMENTADOR SPEED	SPEED FEEDER ARTICULATION	1	200

58	170.1753.001		JUNTA TORICA D75xD3	D75xD3 SEAT RING	1	1
59	33.0114.000		BUS PULSADOR MECANICO	MECHANICAL SWITCH BUS	1	1
60	100.0904.107		TORNILLO DIN 933 M-6x20 I	DIN 933 M-6x20 I. SCREW	7	1
61	13.651.000		SET CAJA-TAPA-BRIDAS CIRCUITO	ELECTRONIC CIRCUIT BOX SET	1	1
63	33.0146.000		DEPOSITO CORTEZAS SPEED (2uds)	SPEED PEEL BUCKET (2uts)	1	1
64	180.0000.023		TAPON GPN300 F211 NEGRO	D23 PLASTIC CAP	1	1
67	105.0910.008		ARANDELA DIN 125 D8 I	DIN 125 D8 I WASHER	14	1
68	100.1901.008		TUERCA DIN 934 M-8 I.	DIN 934 M-8 I. NUT	4	1
69	33.0183.000		TRASERA INOX SPEED	SPEED STAINLESS REAR COVER	1	1
70	100.0903.131		TORNILLO DIN 912 M-8x40 I	DIN 912 M-8x40 I SCREW	2	1
71	105.0910.006		ARANDELA DIN 125 D6 INOX	DIN 125 D6 I WASHER	4	1
72	100.0903.104		TORNILLO DIN 912 M-6x10 I	DIN 912 M-6x10 I SCREW	6	1
73	155.0003.001		CABLE C/CLAVIJA UE 3x1 2'5 Mts	(1) CABLE WITH PLUG 3x1 2'5 Mts. (1)	1	1
	155.0003.006		CABLE C/CLAVIJA GB 2.5M	(2) GB 2.5M SUPPLY CORD SET W/PLUG (2)	1	1
	155.0003.002		CABLE C/CLAVIJA AUS	(3) CABLE WITH PLUG (AUSTRALIA) (3)	1	1
	100.0903.104		TORNILLO DIN 912 M-6x10 I	(4) DIN 912 M-6x10 I SCREW (4)	1	1
74	155.0011.009		PRENSA ESTOPA EXADIN PG-9	TOW PRESS NUT EXADIN PG-9	1	1
76	100.0904.129		TORNILLO DIN 933 M-8x30 I	DIN 933 M-8x30 I SCREW	4	1
77	155.0028.001		SOPORTE BRIDA AUTOADHES. 4.3	HC-101-0 FLANGE SUPPORT	1	1
78	105.0911.006		ARANDELA DIN 127 D6 I	DIN 127 D6 I WASHER	3	1
79	155.0033.001		PRENSA UL HEYCO 302 1223	HEYCO UL PRESS 302 1223	1	1
80	100.0935.065		TORNILLO DIN 7985 M-4x12 I	DIN 7985 M-4x12 I SCREW	5	1
81	105.0915.004		ARANDELA DIN 6798A D4I	DIN 6798A WASHER D4I	1	1
82	33.0059.000		CAPUCHON DOBLE PULS. ZBW-008	Z-100 BUTTON RUBBER PROTECTION	1	40
83	33.0091.000		CODO ALIMENTADOR SPEED	SPEED FEEDER ELBOW	1	1
84	33.0085.000		KIT PULSADOR ON/OFF	ON/OFF SWITCH KIT	1	1
		1 Ud 155.0017.005	CUERPO PULSA. NC/NO ZB4BZ105	NC/NO ZB4BZ105 BODY BUTTON		
		1 Ud 155.0017.003	PULSADOR I/O ZB4-BL8434	PUSH BUTTON I/O ZB4-BL8434		
		1 Ud 155.0017.004	CAPUCHON D. PULSA. ZBW-008	RUBBER BUTTON COVER ZBW-008		
85	100.0927.081		PRISIO.ALLEN DIN 916 M-5x5 I	DIN 916 M-5x5 I ALLEN ROD	1	1
87	120.0018.000		TAPON ROSCA M-5HEYCO 1321750	M-5 SCREW CAP	1	1
88	33.0113.000		DETECTOR MAGNETICO 1000mm	MAGNET DETECTOR 1000mm	2	1
89	100.1601.012		TUERCA DIN 934 M-12 NYLON	DIN 934 M-12 NYLON NUT	2	1
90	33.0043.000		MODULO ELECTRONICO ON/OFF	ELECTRONIC MODULE SPEED 230V	1	5
	33.0044.000		MÓDULO ELECTRÓN. 115V ON/OFF	** 115V ON/OFF ELECTR. MODULE **	1	5
91	145.0000.002		PERFIL PROTECCION REDUCTOR	REDUCER PROTECTIVE STRIP	1,6 m	1
92	105.0916.005		ARANDELA DIN 9021 D5 I	DIN 9021 D5 I WASHER	2	1
93	100.0903.084		TORNILLO DIN 912 M-5x10 I.	DIN 912 M-5x10 I. SCREW	2	1
94	120.0019.000		TAPON ALLEN M-5 NEGRO	ALLEN M-5 CAP BLACK	2	1
95	120.0019.001		TAPON ALLEN M-6 NEGRO	ALLEN M-6 BLACK CAP	4	1
96	120.0019.002		TAPON ALLEN M-8 NEGRO	ALLEN M-8 BLACK CAP	4	1
97	33.0026.000		PERFIL GOMA BASE SPEED	SPEED BASE RUBBER	1	1
98	33.013.002		CUBIERTA ZUMEX SPEED	SPEED FRONT COVER	1	1

99	13.270.000		CARTER REENVIO MECANIZADO	FEEDER GEARING HOUSE	1	1
100	200.2131.001		TAPON CASQUILLO	BUSHING CAP	1	1
101	140.0000.015		CASQUILLO MB 1015 DU	BUSHING MB 1015 DU	1	1
102	210.1103.002		RUEDA HELICOIDAL Z=34	HELICOIDAL GEAR Z=34	1	1
103	250.1109.002		EJE ACCIONAMIENTO	DRIVE SHAFT	1	1
104	115.0000.501		CHAVETA 5x5x10	BOLT 5x5x10	1	1
105	115.0000.001		CHAVETA 5 X 5 X 20	5x5x20 BOLT	1	1
106	13.250.001		EJE RUEDA HELICOIDAL REENVIO	HELICOIDAL GEAR SHAFT	1	1
107	200.1124.002		SEPARADOR ROD REENVIO	BEARING SEPARATOR	1	1
108	140.0202.012		RODAMIENTO 6202 2RS	6202 2RS BEARING	3	1
109	210.1104.002		PIÑON HELECOIDADL Z=15	HELICOIDAL GEAR Z=15	1	1
110	13.260.000		TAPA REENVIO MECANIZADA	FEEDER GEARING HOUSE COVER	1	1
111	105.0916.006		ARANDELA DIN 9021 D6 I	DIN 9021 D6 I WASHER	2	1
112	210.3005.002		PIÑON ACCIONAMIENTO REENVIO	DRIVE GEAR	1	1
113	100.0903.086		TORNILLO DIN 912 M-5x16 I.	DIN 912 M-5x16 I SCREW	4	1
114	130.0013.035		ANILLO SEG. DIN 472 I-35	SECURING RING DIN 472 I-35	2	1
115	130.0012.015		ANILLO SEG. DIN 471 E-15	SECURING RING DIN 471 E-15	2	1
116	135.0017.046		PAS/ELAST.DIN 1481 D3x15	ELASTIC BOLT DIN 1481 D3x15	1	1
117	33.0033.000		KIT REENVIO SPEED COMPLETO	SPEED FEEDER GEARING KIT	1	1
120	260.0213.001		BANDEJA POSAVASOS SPEED	SPEED DRIP TRAY	1	1
121	260.0214.001		FILTRO POSAVASOS SPEED	SPEED DRIP TRAY FILTER	1	1

- (1) ZUMEX SPEED 230V
- (2) ZUMEX SPEED 230V MODELOS GB / GB MODELS
- (3) ZUMEX SPEED 240V MODELOS AUS / AUS MODELS
- (4) ZUMEX SPEED 115V / MODELOS UL / UL MODELS

**\*\* SOLO PARA MÁQUINAS DE 115V / ONLY FOR 115V MACHINES**