

Spare Parts List GS 42

Edited: 07/95
Revised: 09.03.10

Part no.: 89001566

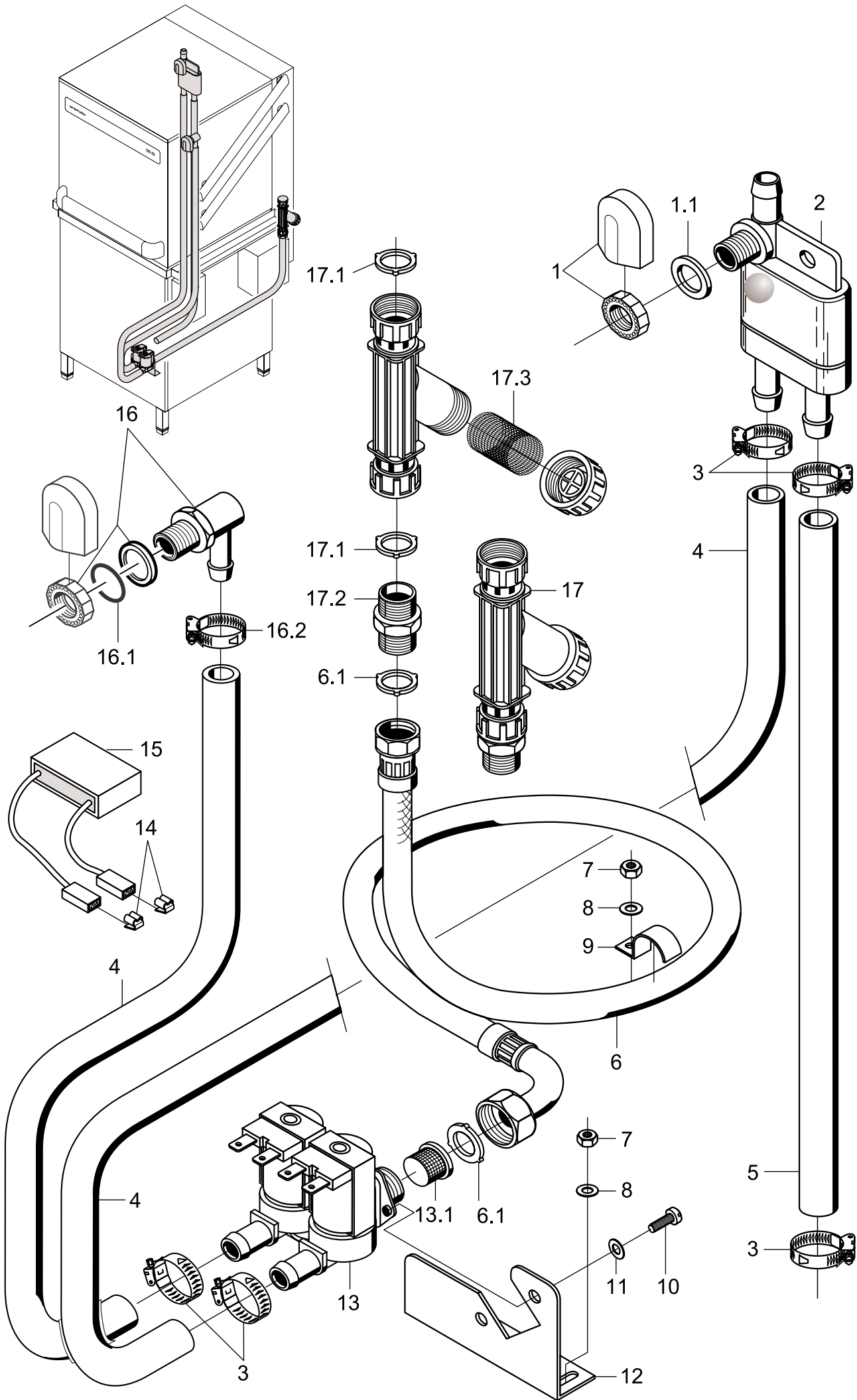
Summary

Water inlet	Page 1 and 2
Water inlet - Tundish	Page 3 and 4
Water drain and tank heating	Page 5 and 6
Mediamat	Page 7 and 8
Wash system I	Page 9 and 10
Wash system II	Page 11 and 12
Rinsing I	Page 13 and 14
Rinsing II - AquaMatik	Page 15 and 16
Rinsing III - AquaMatik	Page 17 and 18
Rinsing IV	Page 19 and 20
Dosing	Page 21 and 22
Housing and base frame	Page 23 and 24
Hood and hood guide	Page 25 and 26
Electrical parts I	Page 27 and 28
Electrical parts II	Page 29 and 30
Electrical parts III	Page 31 and 32
Panel connection set	Page 33 and 34
Drain pump (Option)	Page 35 and 36
Glass-washing kit (option)	Page 37 and 38

Please note the following points with regard to this list:

See separate list for racks and accessories.

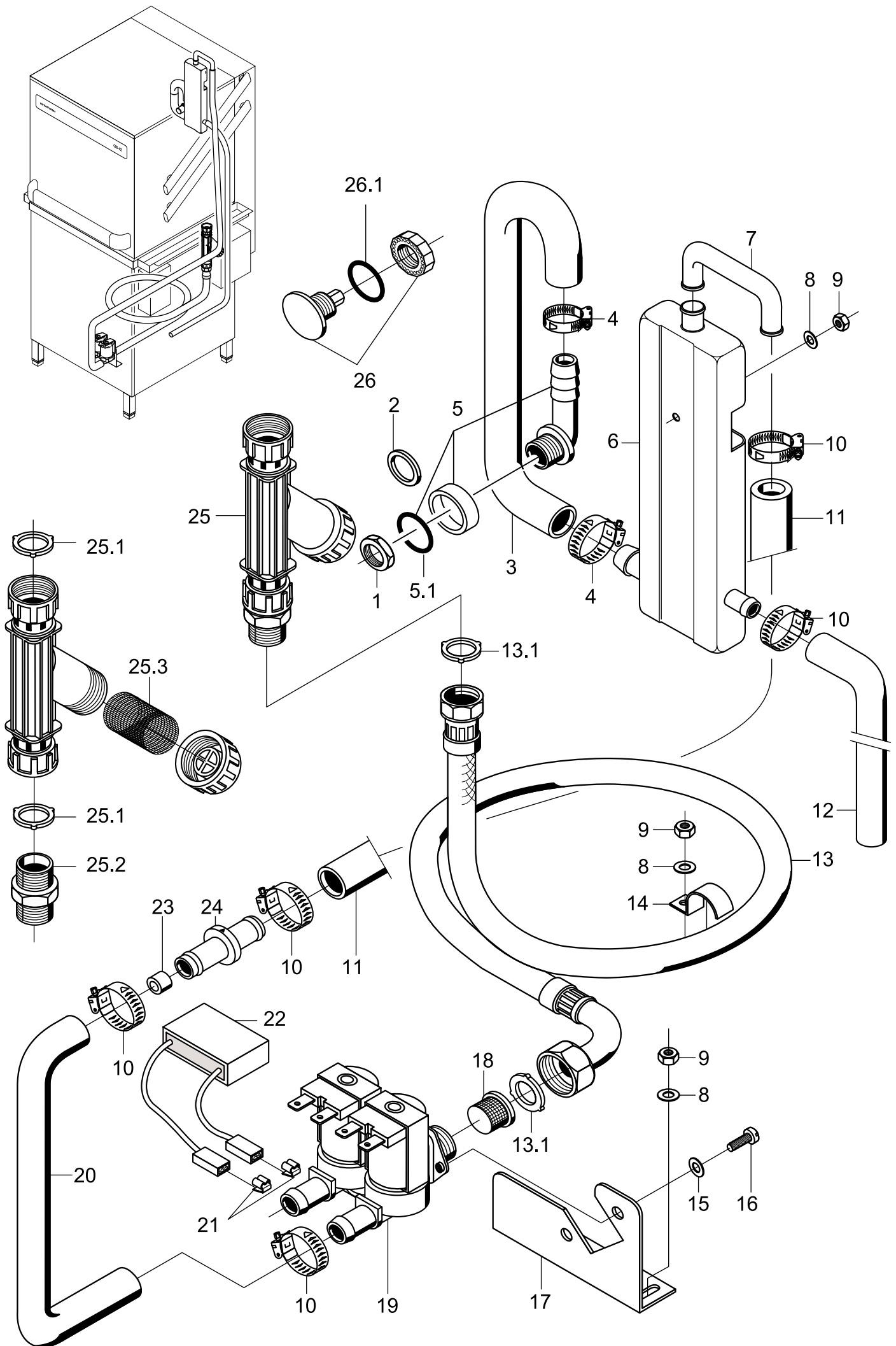
Enter the required quantity in the column marked "Pc." if more than 1 part is installed and if this part is not a standard part.



GS 42

Water inlet

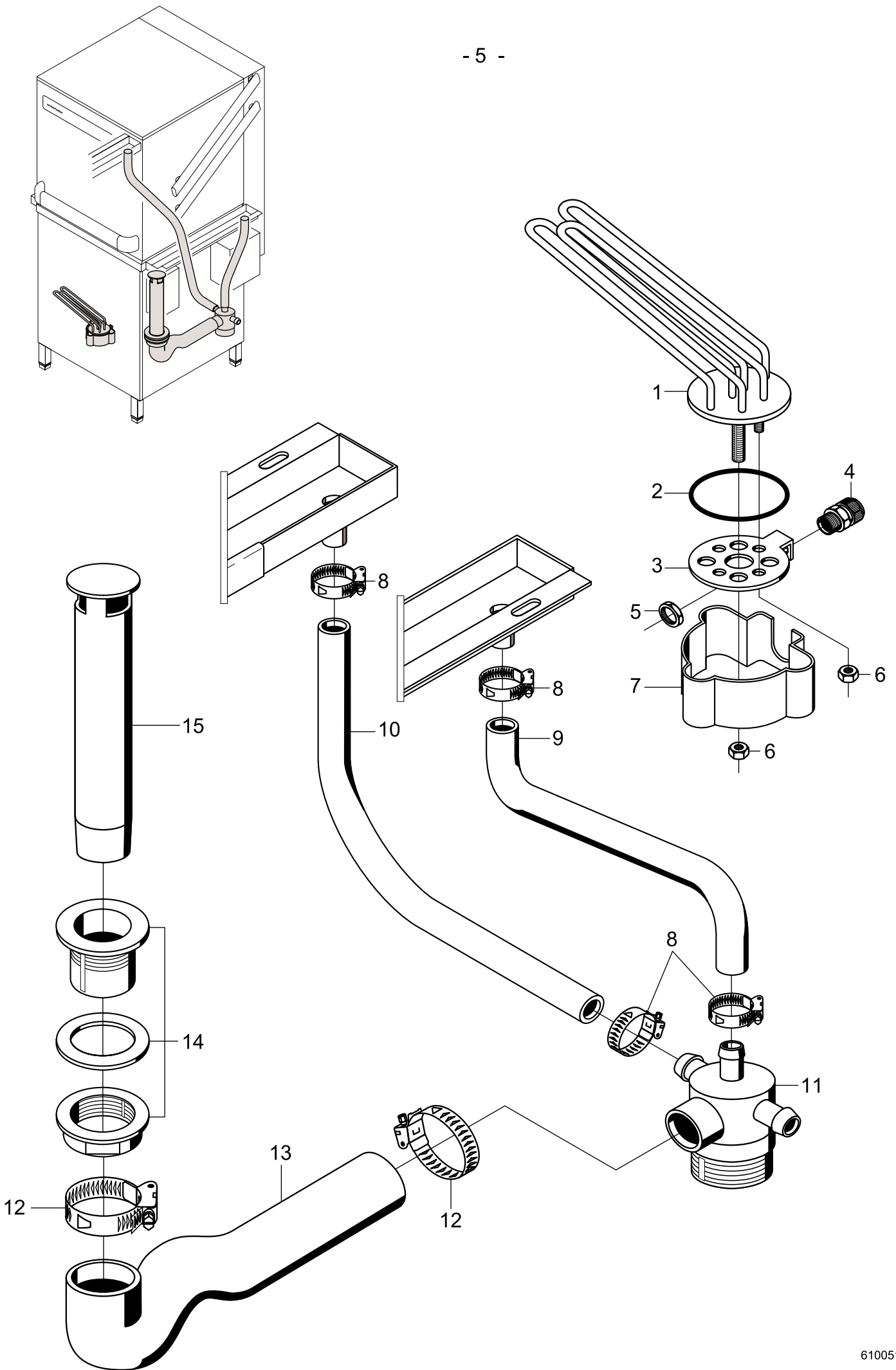
Item	Designation	Part no.	Pc.	Notes
1	Tank inlet set	61004545		incl. item 1.1
1.1	Seal; \varnothing 17 x \varnothing 24 x 2.0	62001366		
2	Backflow restrictor lateral	35 01 194		
3	Hose clip; \varnothing 14 - \varnothing 24 x 9	28 02 108		
4	Shaped hose; nom. dia. 12.5 x 4.0 x 1520	40 03 051	2	cut to size
5	Hose; nom. dia. 13 x 3.5 x 1345	40 02 029		per metre
6	Metal hose; nom. dia. 13 X 2000; G3/4"	29 01 321		incl. item 6.1
6.1	Seal; \varnothing 16 x \varnothing 24 x 3.0	80002241	2	
7	Hex nut; M 5 self-locking	21 05 302		
8	Washer; \varnothing 5.3 x \varnothing 12 x 0.8	22 02 213		
9	Clip	55 25 017	2	
10	Pan-head screw; M 4 x 8	20 10 210		
11	Washer; \varnothing 4.3 x \varnothing 8 x 0.5	22 02 202		
12	Support; solenoid valve	61003723		
13	Double solenoid valve; 220-240 V; 50/60 Hz	31 06 182		incl. Item 13.1
	Double solenoid valve; 180-220 V; 50/60 Hz	31 06 200		Japan
13.1	Dirt trap	31 06 186		
14	Tab connector	31 12 018	2	only with AquaMatik; connect
15	RC element; 0,15 μ F; 3,3k Ω	31 13 114		parallel to item 13
16	Tank inlet set	55 31 007		incl. items 16.1, 16.2
16.1	Seal; D21 x D28 x 2,0	27 09 011		replaced by 55 31 007
16.1	Seal; \varnothing 20.5 x \varnothing 28.5 x 2.0	27 01 002		replaced by 55 31 007
16.1	O-ring; 20 x 3	27 07 031		
16.2	Hose clip; \varnothing 14 - \varnothing 24 x 9	28 02 108		
17	Dirt trap cpl.	80002153		incl. items 17.1, 17.2, 17.3
17.1	Seal; \varnothing 16 x \varnothing 24 x 3.0	80002241	2	
17.2	Union stem; G 3/4" x 40; width A/F 30	80002167		
17.3	Dirt trap	80002728		
	Strainer for dirt trap with right-angled outlet	31 06 135		
n.p.	Metal hose; DN13 X 1000 MM; G3/4"	30000332		additional equipment
n.p.	Seal; \varnothing 16 x \varnothing 24 x 3.0	80002241		additional equipment

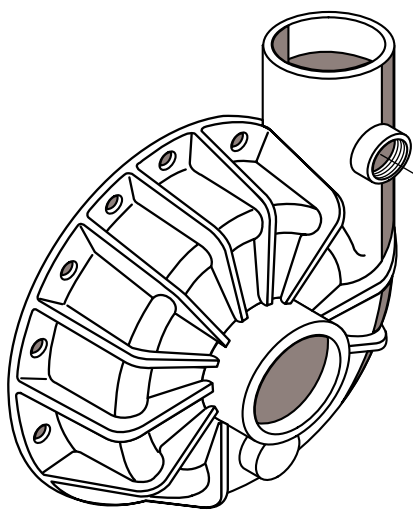
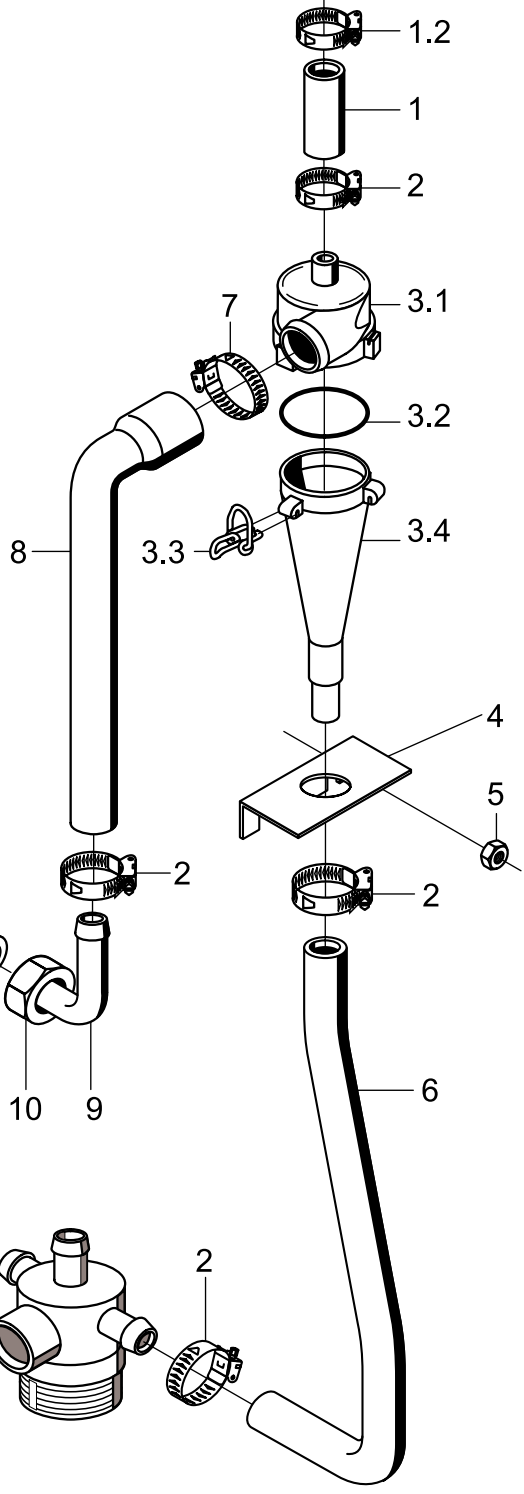
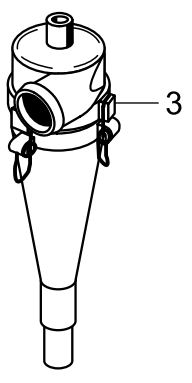
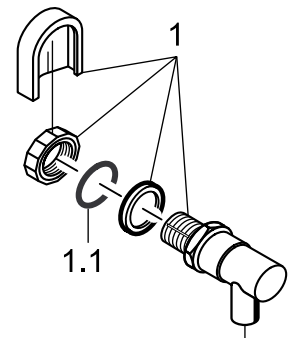
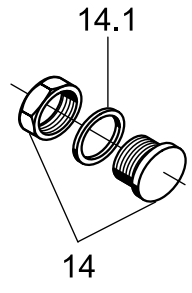
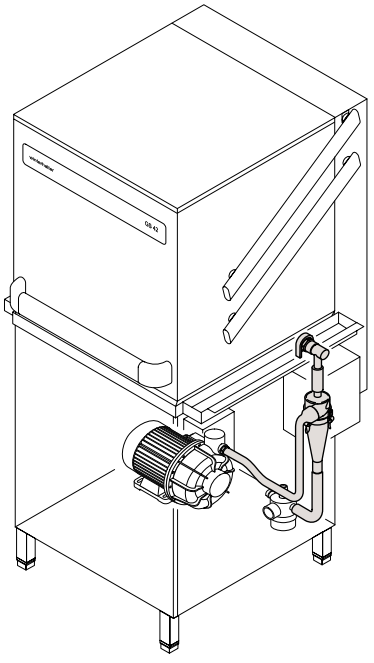


GS 42

Water inlet - Tundish (Great Britain only)

Item	Designation	Part no.	Pc.	Notes
1	Hex nut; G 3/4" x 18; with A/F 32	30 09 502		
2	Seal; \varnothing 26 x \varnothing 36 x 2.0	27 01 003		
3	Hose elbow; nom. dia. 25 x 4	61004322		
4	Hose clip; \varnothing 24 - \varnothing 44	28 02 309		
5	Distributor bend; G 3/4"; 51 x 85	62001887		adapt
5.1	O-ring; 24 x 3.0	27 07 087		
6	Intermediate tank	60002542		
7	Pipe bend; \varnothing 12 x \varnothing 14 x 2.0	60002507		
8	Washer; \varnothing 5.3 x \varnothing 10 x 1.0	22 01 300		
9	Hex nut; M 5 self-locking	21 05 302		
10	Hose clip; \varnothing 14 - \varnothing 24	28 02 108		
11	Hose; nom. dia. 13 x 3.5 x 1300	40 02 029		per metre
12	Hose bend; nom. dia. 12,5 x 4,0	40 03 050		adapt
13	Metal hose; nom. dia. 13 X 2000; G3/4"	29 01 321		incl. item 13.1
13.1	Seal; \varnothing 16 x \varnothing 24 x 3.0	80002241	2	
14	Clip	55 25 017		
15	Lock washer; B 4	23 03 304		
16	Pan-head screw; M 4 x 8	20 10 309		
17	Support; solenoid valve	61003723		
18	Strainer	31 06 186		
19	Double solenoid valve; 220-240 V; 50/60 Hz	31 06 182		
20	Hose; nom. dia. 13 x 3.5 x 320	40 02 029		per metre
21	Tab connector	31 12 018	2	connect parallel to item 19
22	RC element; 0,15 μ F; 3,3k Ω	31 13 114		
23	Flow controller; 5 l/min	31 06 195		
24	Adapter; 54 x \varnothing 20	61004511		
25	Dirt trap cpl.	80002153		incl. items 25.1, 25.2, 25.3
25.1	Seal; \varnothing 16 x \varnothing 24 x 3.0	80002241	2	
25.2	Union stem; G 3/4" x 40; width A/F 30	80002167		
25.3	Dirt trap	80002728		
	Strainer for dirt trap with right-angled outlet	31 06 135		
26	Plug; G 3/8"	70004899		incl. items 26.1
26.1	O-ring; 16 x 2.5	27 07 001		

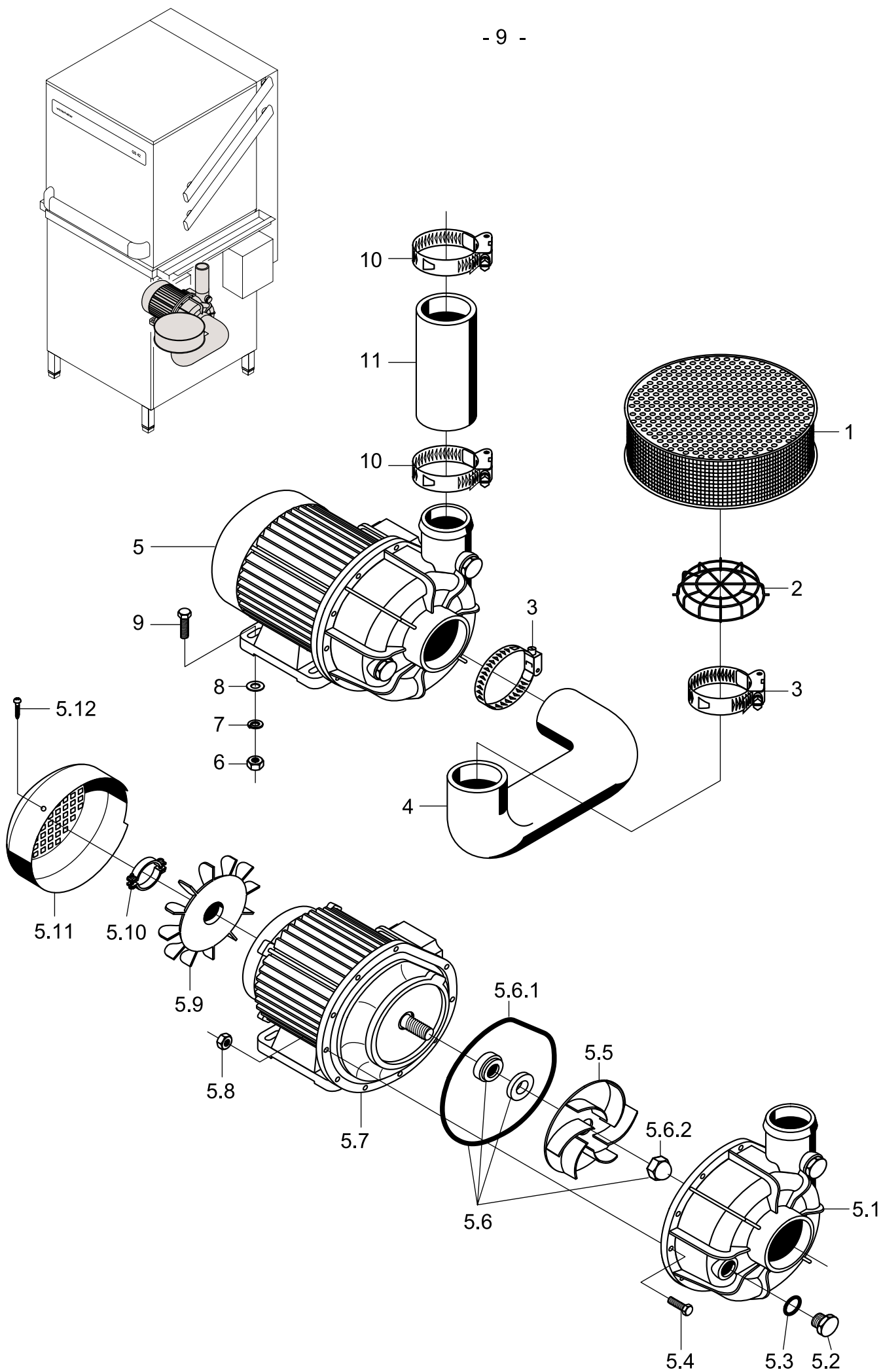


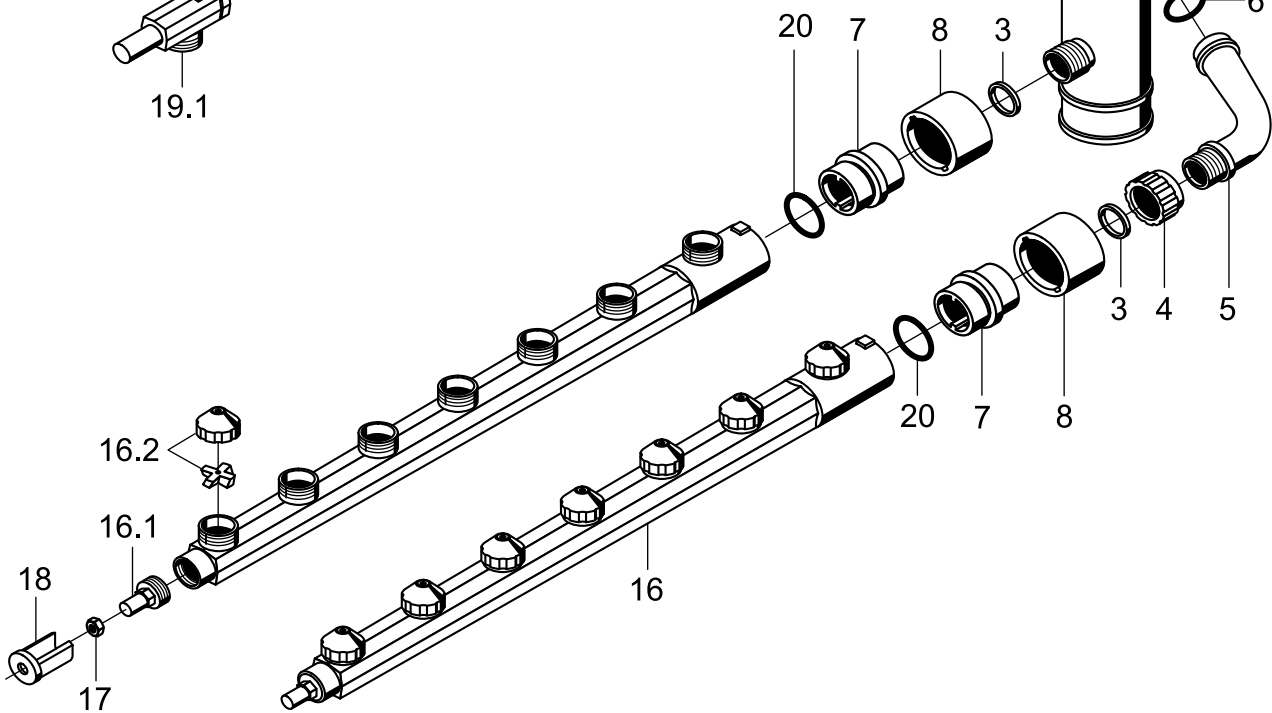
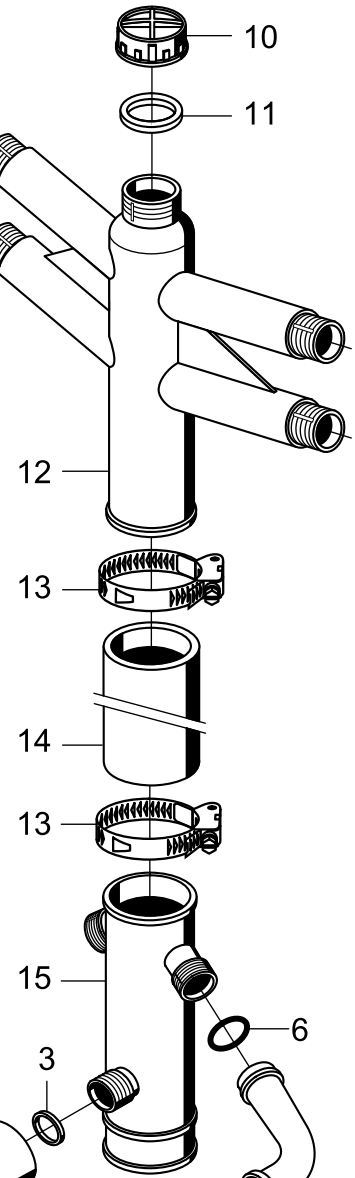
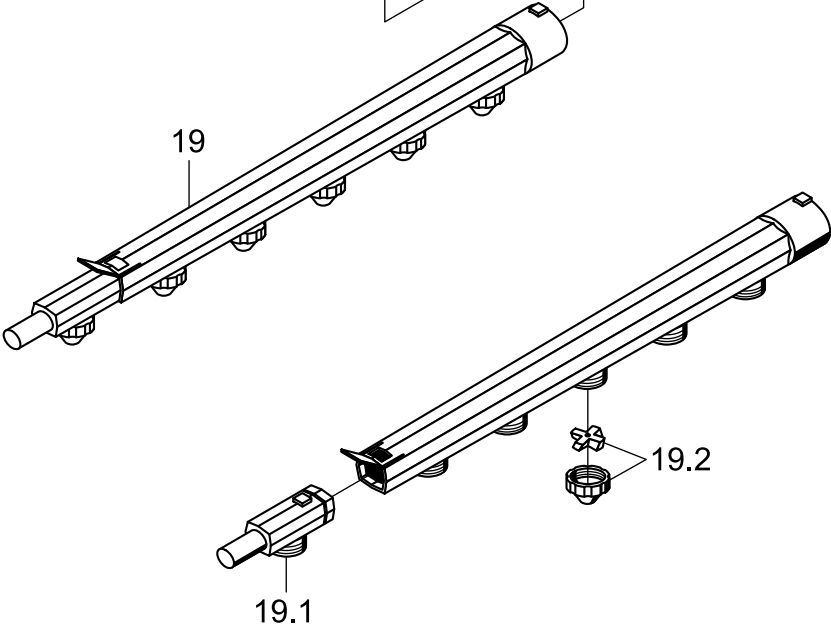
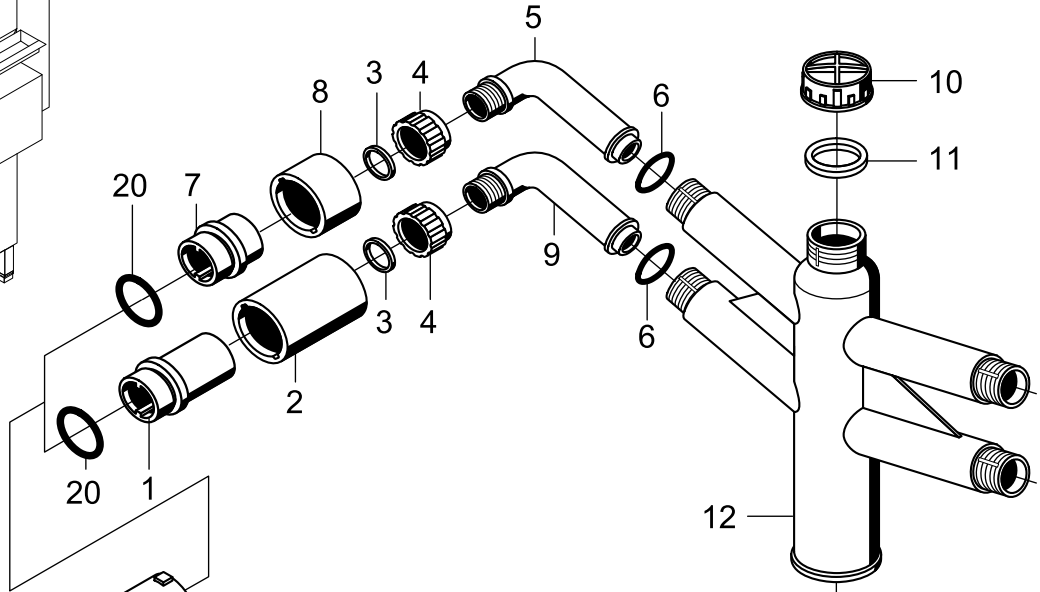
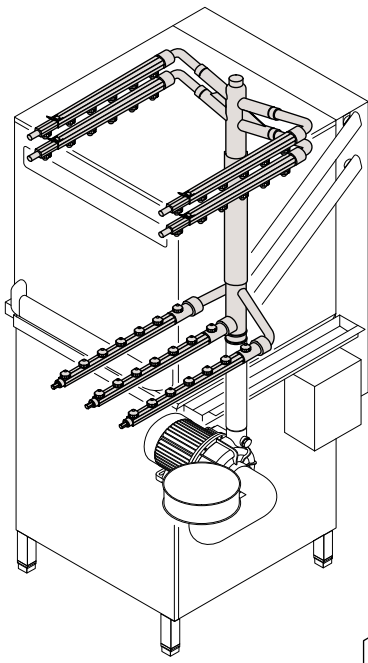


GS 42

Mediamat

Item	Designation	Part no.	Pc.	Notes
1	Mediamat inlet set	55 31 001		incl. items 1.1 – 1.3
1.1	Seal; D21 x D28 x 2,0	27 09 011		replaced by 55 31 001
1.1	Seal; ø 20.5 x ø 28.5 x 2.0	27 01 002		replaced by 55 31 001
1.1	O-ring; 20 x 3	27 07 031		
1.2	Hose clip; ø 20 - ø 30	28 02 109		
1.3	Hose; nom. dia. 16 x 4 x 34	61002797		adapt
2	Hose clip; ø 20 - ø 30	28 02 109		
3	Mediamat; cpl.	55 27 040		incl. items 3.1 - 3.4
3.1	Head piece, Mediamat; ø 30	35 01 124		
3.2	O-ring; ø 51 x 3	27 07 043		
3.3	End piece fastener ø 2	28 04 041	4	
3.4	Accelerator; ø 75 x 169 x ø 4.3	35 01 035		
4	Retaining angle for Mediamat	61000658		
5	Hex nut; M 5	21 05 302		
6	Shaped hose; nom. dia. 19 x 3.5	61003889		
7	Hose clip; ø 32 x ø 52 x 12	28 02 110		
8	Reduction hose; nom. dia. 30 x nom. dia. 16	40 03 036		cut to size
9	Mediamat connecting bend; ø 17; 90°	29 06 524		
10	Cap nut; G 3/4" x 21	29 07 203		
11	Seal; ø 19.5 x ø 24 x 1.5	27 09 010		
12	Mediamat connecting nipple; G 1/2" x G 3/4" x 32	30 11 502		
13	O-ring; 20 x 3.5	27 07 040		
14	Filler plug; G 1/2"	70004912		incl. item 14.1
14.1	O-ring; 20 x 2.5	27 07 004		with installed drain pump

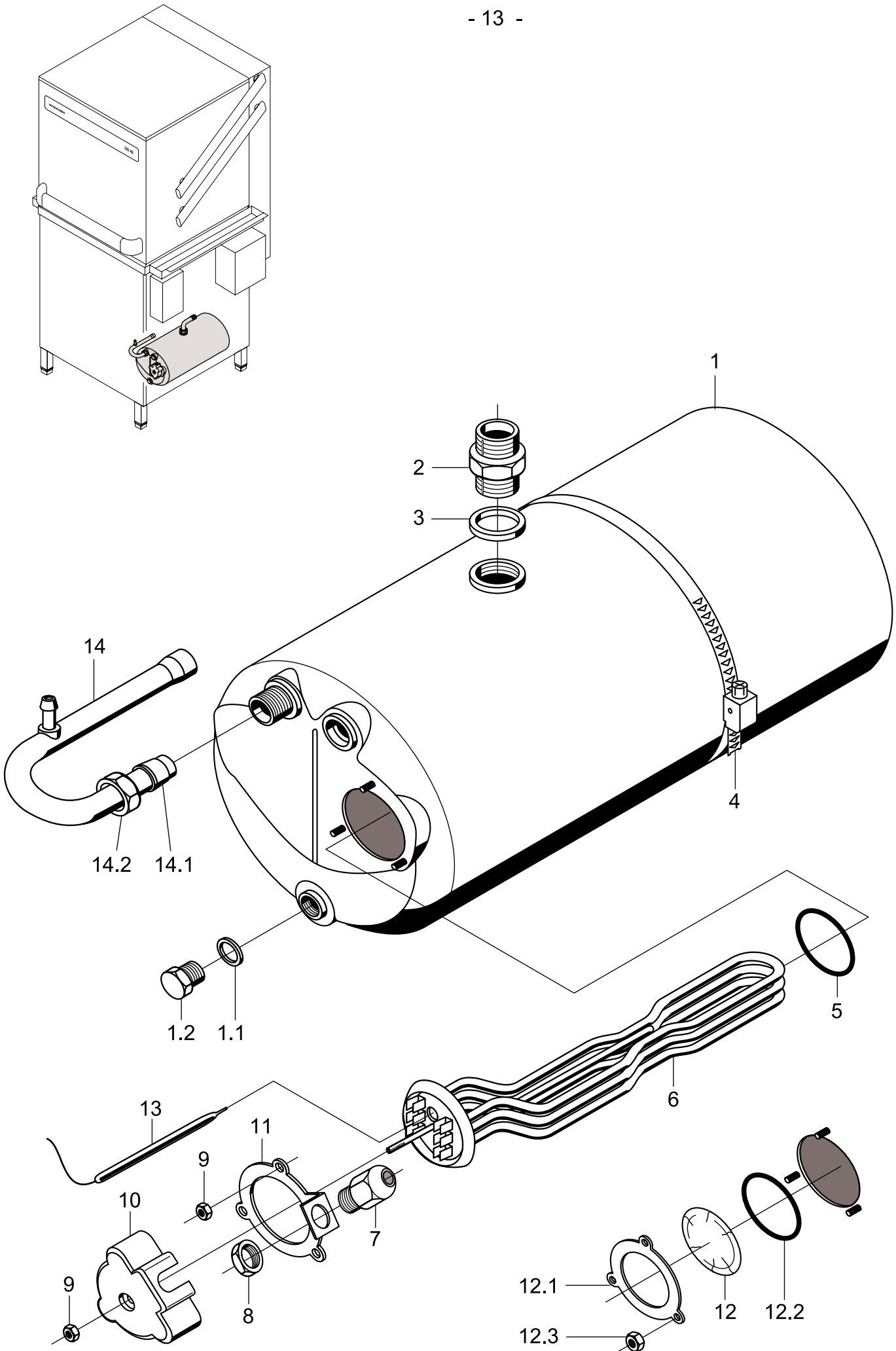


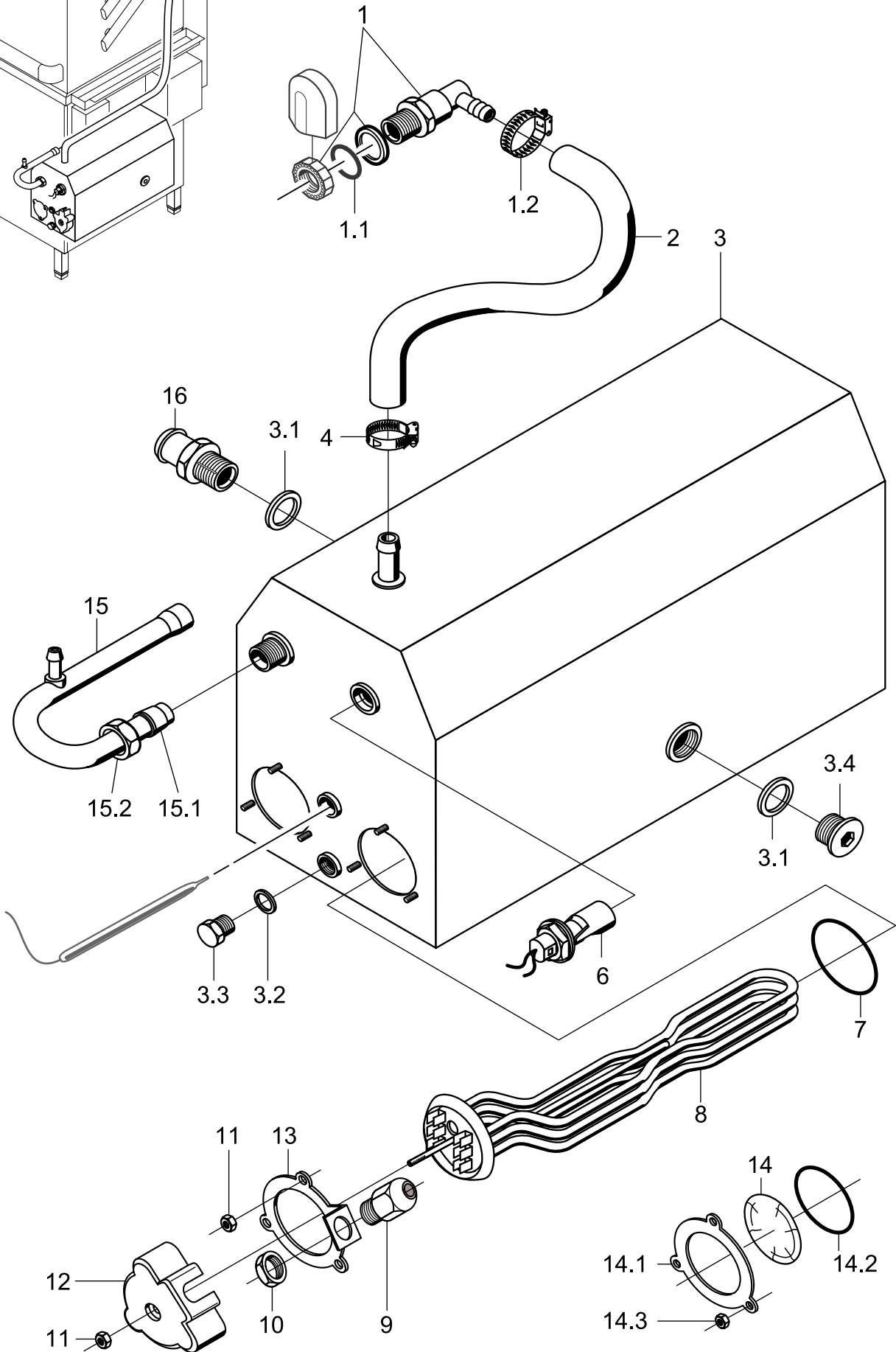
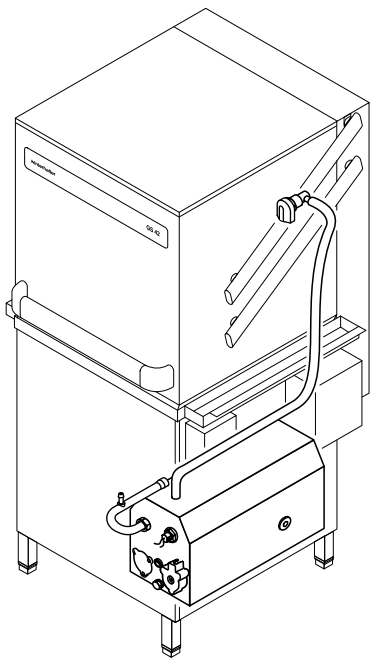


GS 42

Wash system II

Item	Designation	Part no.	Pc.	Notes
1	Locking nut; ø 38 x 76	61004060	2	
2	Locking ring; ø 49 x 70	61002024	2	
3	Seal; ø 26 x ø 36 x 2.0	27 01 003	7	
4	Cap nut; G 1 1/4" x 24	35 01 004	6	
5	Distributor bend long; G 3/4" x 140 x 51	35 01 149	4	
6	O-ring; 24 x 3	27 07 087	6	
7	Locking nut; ø 38 x 34	61004059	5	
8	Locking ring; ø 49 x 28	61002023	5	
9	Distributor bend short; G 3/4" x 76 x 51	35 01 150	2	
10	Cap; G 1 1/4" x 24	35 01 158		
11	Seal; ø 30 x ø 39 x 2.0	27 02 001		
12	Wash manifold	61003694		
13	Hose clip; D50-70 x 12	30001243		
14	Pump hose; nom. dia. 50 x 8 x 150	40 02 006		per metre
15	Distributor; bottom part	35 01 018		
16	Wash arm lower, cpl.	61001965	3	incl. items 16.1, 16.2
16.1	Wash arm plug; G 1/2" x 37	35 01 210	3	
16.2	Wash jet	60002465	21	
17	Hex nut; M 5	21 05 302		
18	Bush guide; ø 28 x 30	61003938	3	
19	Wash arm upper, cpl.	61002557	4	incl. items 19.1, 19.2
19.1	End piece; slanted	61002084	4	
19.2	Wash jet	60002465	24	
20	O-ring; ø 28 x 2.5	27 07 049	7	

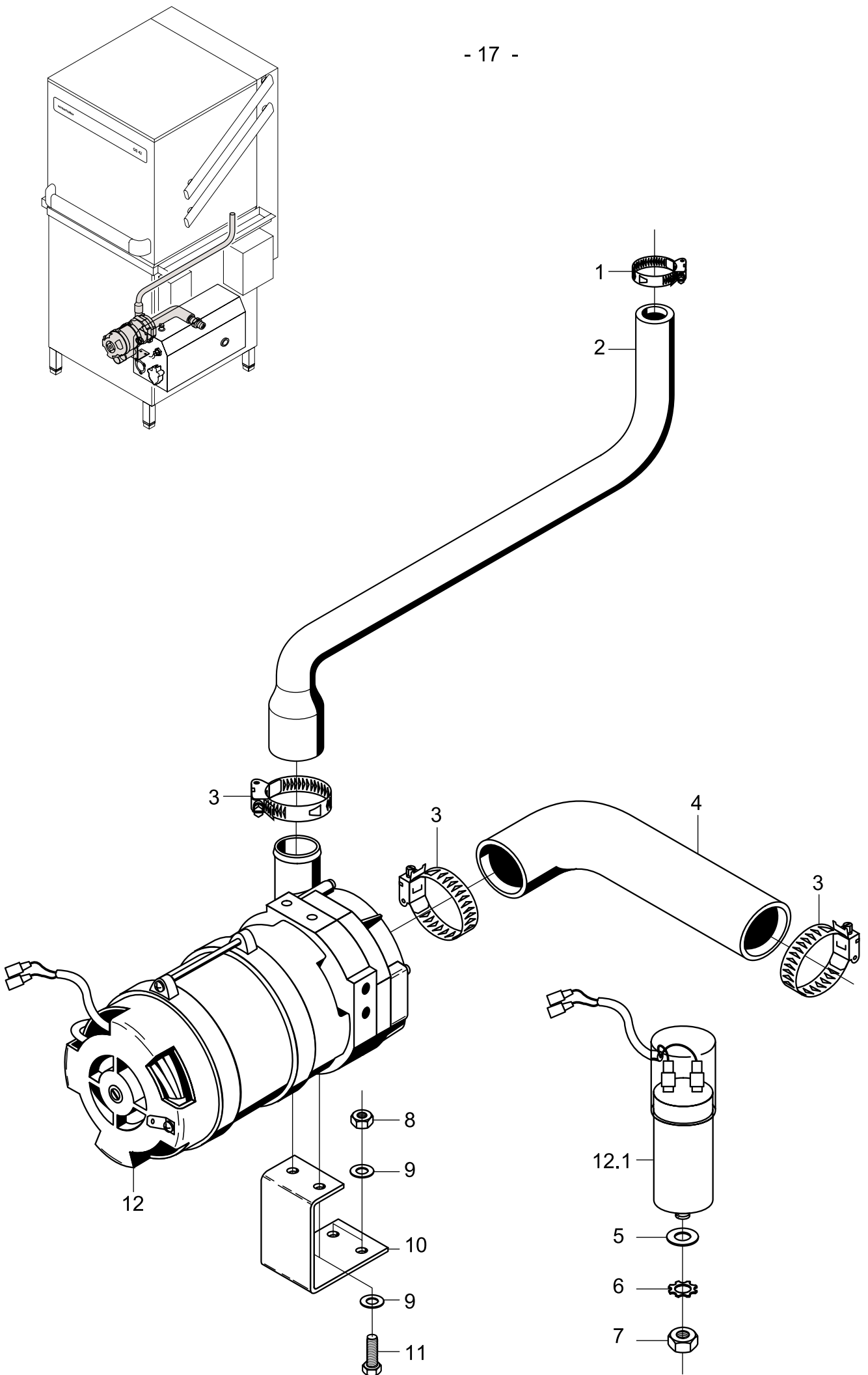


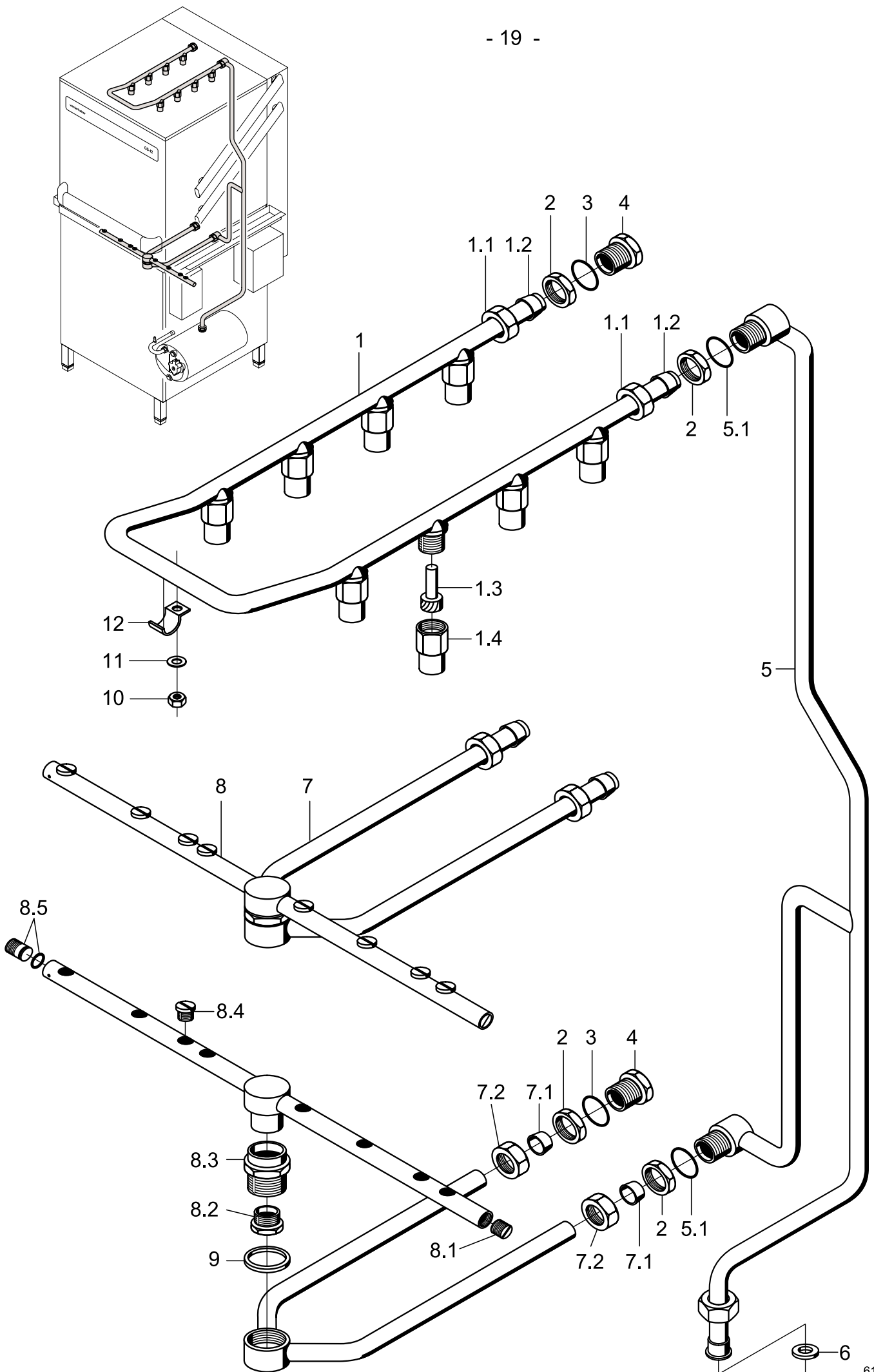


GS 42

Rinsing II - AquaMatik

Item	Designation	Part no.	Pc.	Notes
1	Tank inlet set	55 31 007		incl. item 1.1, 1.2
1.1	Seal; D21 x D28 x 2,0	27 09 011		replaced by 55 31 007
1.1	Seal; ø 20.5 x ø 28.5 x 2.0	27 01 002		replaced by 55 31 007
1.1	O-ring; 20 x 3	27 07 031		
1.2	Hose clip; ø 14 - ø 24	28 02 108		
2	Shaped hose; nom. dia. 12.5 x 4 x 1520	40 03 051		cut to size
3	Boiler frame, cpl.; pressureless	80002128		incl. items 3.1 - 3.4
3.1	Seal; ø 21 x ø 28 x 2.0	27 09 011		
3.2	Seal; ø 10 x ø 18 x 1.5	27 03 003		
3.3	Hex-head screw; M 10 x 16	20 01 352		
3.4	Locking screw; G 1/2"	30 08 303		
4	Hose clip; ø 14 - ø 24	28 02 108		
6	Floating switch; 250V; 15VA	55 28 255		
7	O-ring; ø 43 x 7	27 07 088		
8	Heating element cranked; 6.0kW; 230V/400V/3	31 03 017		
	Heating element cranked; 6.0kW; 240V/420V/3	31 03 043		
	Heating element cranked; 6.0kW; 200V/346V/3	31 03 046		
n.p.	Star bridge with nozzle; cpl.	31 23 088	2	
9	Cable gland; PG 13.5	31 10 040		
10	Hex nut; PG 13.5	31 10 041		
11	Hex nut; M 5	21 01 203		
12	Cap for heating element	31 03 014		
13	Clamping plate	55 19 018		
14	Blank flange; ø 60	60002787		incl. items 14.1 – 14.3
14.1	Clamping plate	01 17 003		
14.2	O-ring; ø 43 x 7	27 07 088		
14.3	Hex nut; M 5	21 01 203		
15	Boiler inlet bend, cpl.	55 09 054		incl. items 15.1, 15.2
15.1	Cutting ring; ø 15 x 10; nom. dia. 12	29 07 300		
15.2	Cap nut; G 1/2"; ø 12.2 x 15	29 07 201		
16	Hose stem; ø 26 x 41; G 1/2"; width A/F 27	80001403		

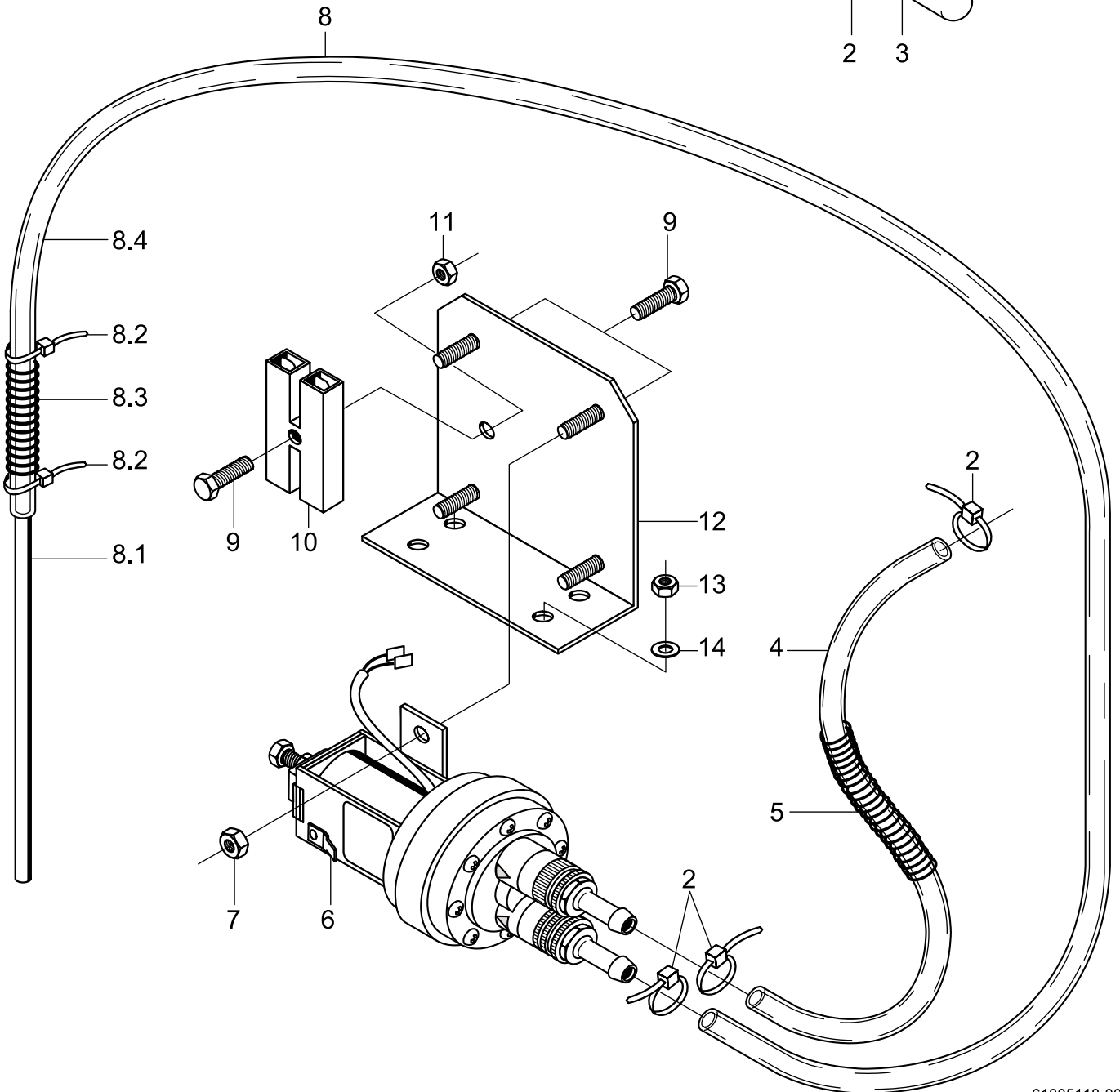
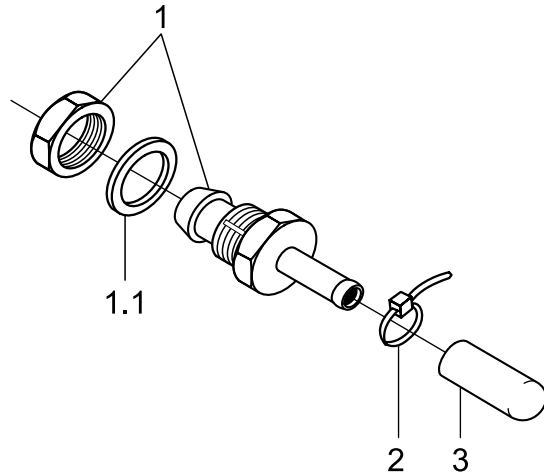
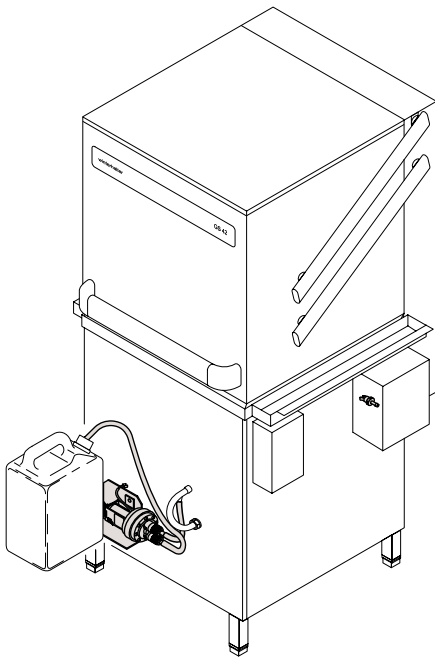


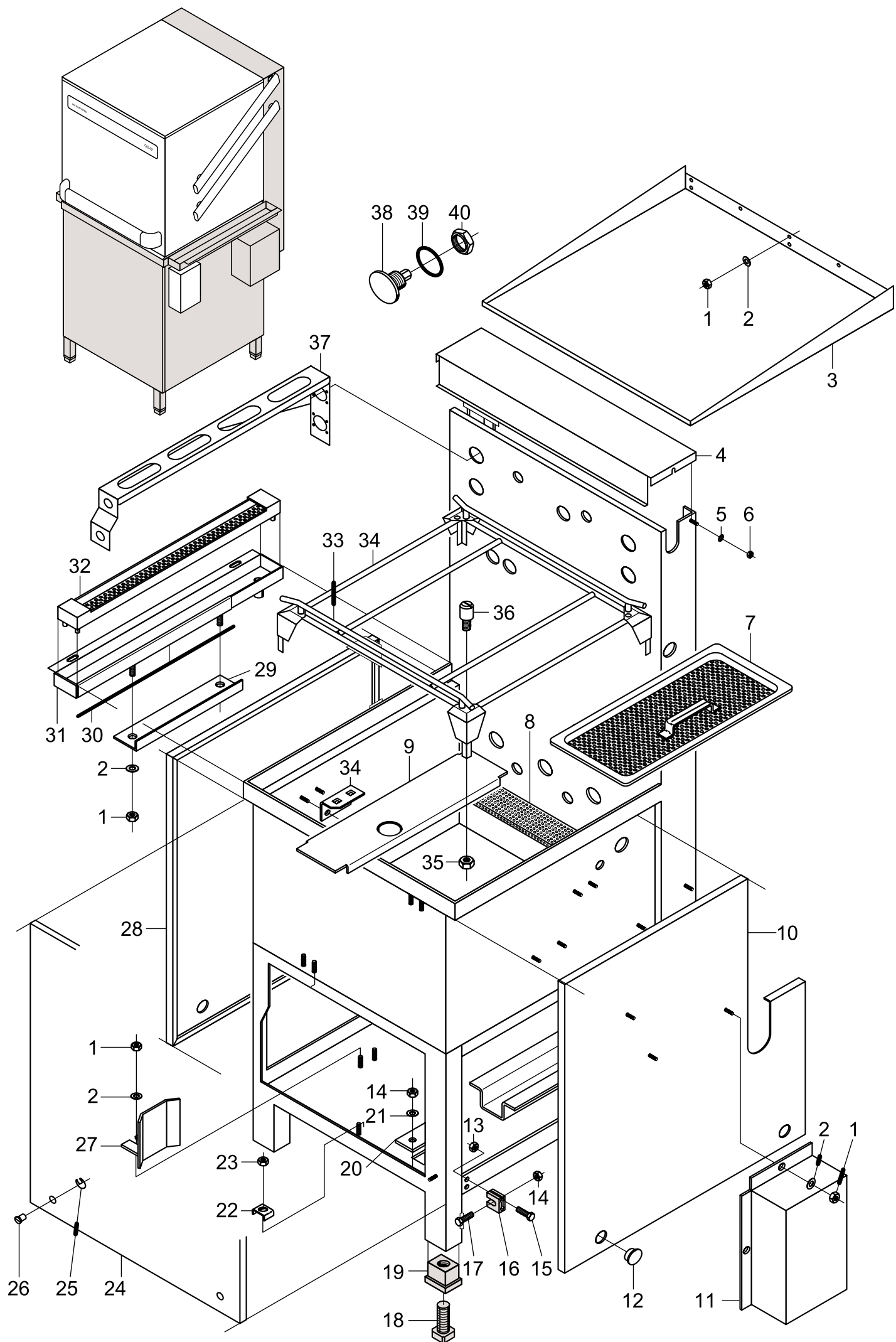


GS 42

Rinsing IV

Item	Designation	Part no.	Pc.	Notes
1	Ring pipe, cpl.	61003514		incl. items 1.1 - 1.4; up to mach.-no. 367 554
	Ring pipe, cpl.	61004831		incl. items 1.1 - 1.4; from mach.-no. 367 555
1.1	Cap nut; G 3/8" x ø 10.2	29 07 200	2	
1.2	Clamping ring; ø 10.2	29 07 500	2	
1.3	Nozzle swirl device; ø 8 x 18.8	65002764	8	
1.4	Nozzle cap; ø 14,6 x 21	65002765	8	
2	Lock nut; G 3/8"	30 09 200	4	
3	Seal; ø 17 x ø 24 x 2.0	27 09 009	2	
4	Blank stem; G 3/8"	61002295	2	
5	Rinse manifold; pressurized boiler	61003841		incl. item 5.1 (O-ring 2707001)
	Rinse manifold; Pressure-independent boiler	80001944		
5.1	O-ring; 16 x 2.5	27 07 001	4	up to 10/98
	Seal; ø 17 x ø 24 x 2.0	27 09 009		from 09/98
6	Seal; ø 17 x ø 24 x 2.0	27 09 009		
7	Revolving arm support, cpl.	61004449		incl. items 7.1, 7.2; without revolving arm
7.1	Clamping ring; ø 10.2	29 07 500	2	
7.2	Cap nut; G 3/8" x ø 10.2	29 07 200	2	
8	Revolving arm, cpl.	55 10 091		incl. items 8.1 - 8.5
8.1	Grub screw; M 11 x 1.0 x 8	29 10 239		
8.2	Revolving arm screw; M 14 x 1	20 19 204		
8.3	Revolving arm bush; G 3/4" x 24.5	35 01 161		
8.4	Flat jet	29 10 312	8	
8.5	Grub screw; M 11 x 14	29 10 240		incl. O-ring 27 07 042
9	Seal; ø 27 x ø 34 x 2.0	27 09 025		
10	Hex-head screw; M 5	21 05 302		
11	Washer; ø 5.3 x ø 15.0 x 1.2	22 05 301		
12	Pipe clip	55 04 057		up to mach.-no.: 367 554

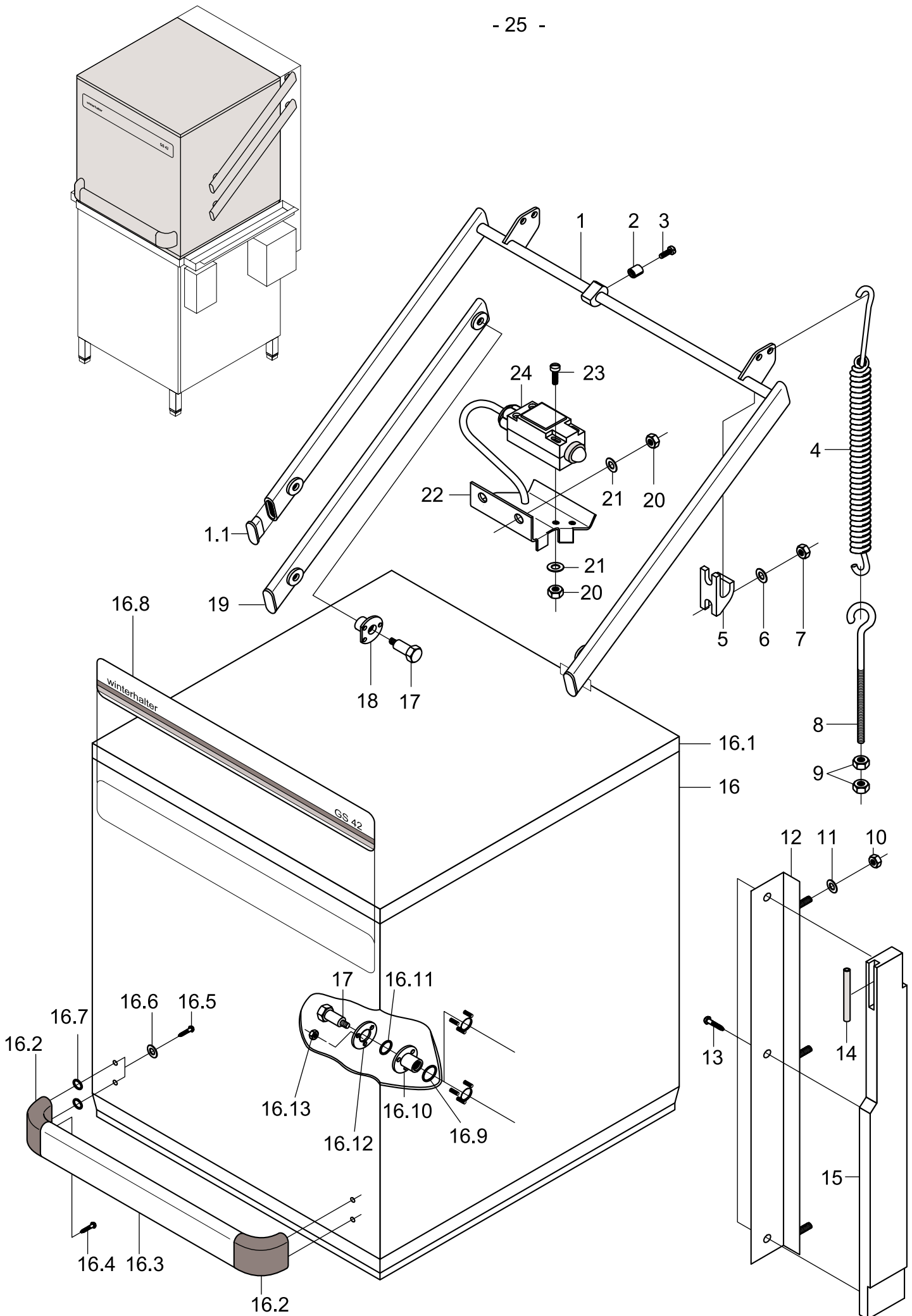




GS 42

Housing and base frame

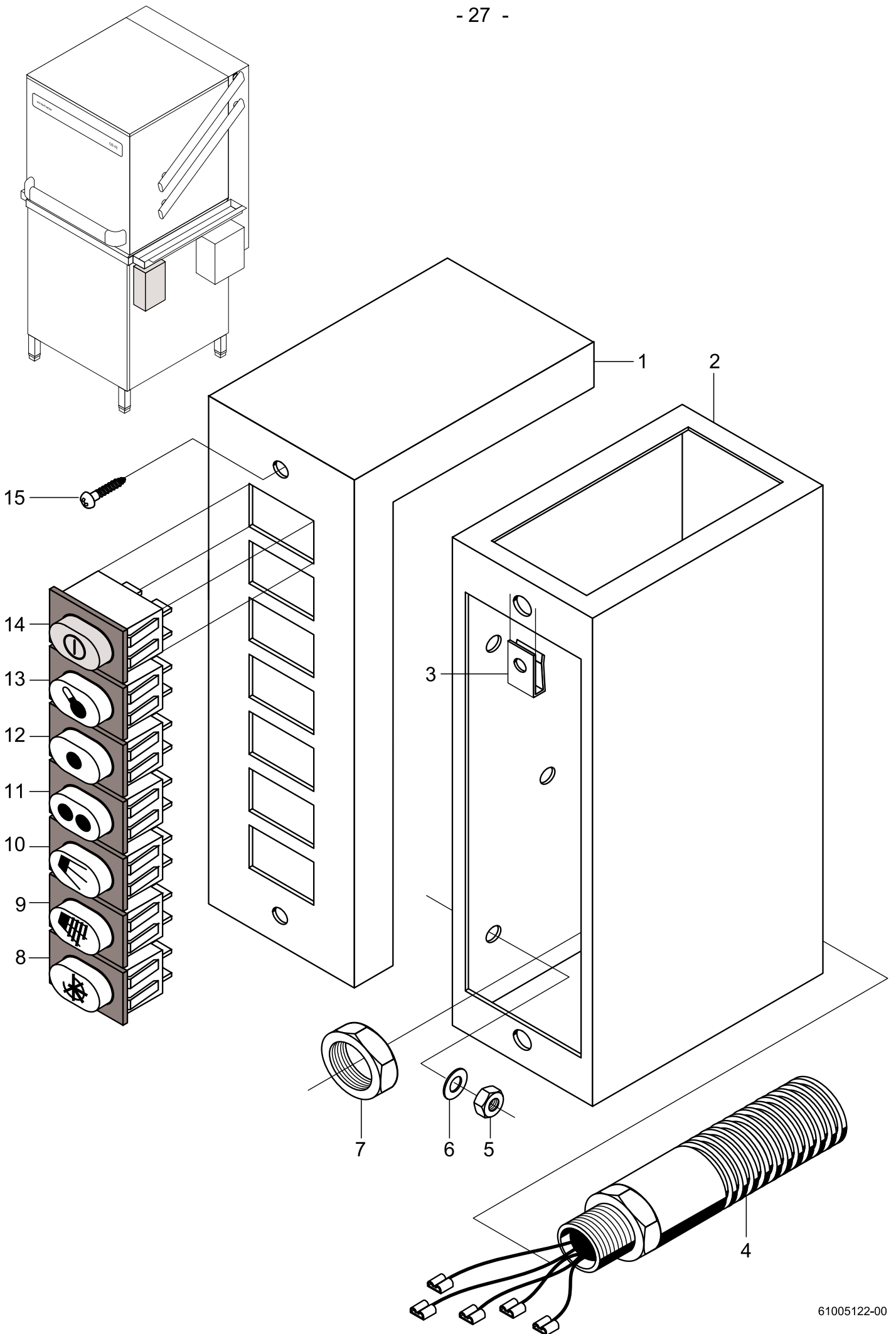
Item	Designation	Part no.	Pc.	Notes
1	Hex nut; M 5 self-locking	21 05 302		
2	Washer; \varnothing 5,3 x \varnothing 10,0 x 1,0	22 01 300		
3	Upper panel (replaced by conversion to hood)	55 28 237		up to mach.-no.: 367 554
4	Cover for rear panel	61003536		up to mach.-no.: 367 554
	Cover	61004286		from mach.-no.: 367 555
5	Washer; \varnothing 4,3 x \varnothing 8 x 0,5	22 02 302		
6	Hex nut; M 4 self-locking	21 05 300		
7	Surface strainer	61003085	2	
8	Bracket panel	61003867	2	
9	Support for bracket panel	61003797		
10	Panel; right	61003800		for GS 42 R, GS 42 Eck R
	Panel; right	61003799		for GS 42 L, GS 42 Eck L
11	Cover	61003839		
12	Cap; \varnothing 10	35 03 017	4	
13	Hex nut; M 4	21 01 302		
14	Hex nut; M 5	21 01 303		
15	Pan-head screw; M 4 x 45	20 10 328		
16	Strut support; 20 x 7.8 x 27,8	35 01 068	4	up to 09/95
	Strut support; 35 x 7.8 x 30	61003908	4	from 10/95
17	Pan-head screw; M 5 x 16	20 10 224		
18	Foot cleat; G 3/4"; 32 x 32 x 100	35 01 064	4	
19	Threaded insert; G 3/4"; 42 x 62 x 50	35 01 063	4	
20	Cover plate	61002611		
21	Washer; \varnothing 5.3 x \varnothing 12 x 0.8	22 02 313		
22	Clamping bracket; 1.5 – 6.0 mm ²	31 09 095		
23	Hex nut; M 6	21 05 304		
24	Panel; front	61003872		incl. items 25, 26
25	Annular spring; \varnothing 15.3 - \varnothing 16.3 x \varnothing 1.2	71002952	2	
26	Threaded cap; M 4 x 12	28 14 331	2	
27	Supporting angle	61003840		up to mach.-no.: 367 554
28	Panel; left	61003799		for GS 42 R, GS 42 Eck R
	Panel; left	61003904		for GS 42 L, GS 42 Eck L
29	Angle	61002960	2	
30	Round lead; \varnothing 2 x 767	40 04 005	2	per metre
31	Trough; lleft; 50mm	61003806		and front at GS 42 Eck R
	Trough; right; 50mm	61003808		and front at GS 42 Eck L
	Trough; left; 35mm	61003941		
	Trough; right; 35mm	61003942		
32	Strainer insert for trough, 50mm	61004415	2	
	Strainer insert for trough; 35mm	61004416		
33	Guiding rod	61003492	2	up to mach.-no.: 350 732
	Guiding rod	61004267	2	from mach.-no.: 350 733
34	Rack support set; 500 x 500	61004826		incl. item 33, 35, 36,
	Rack support set, 500 x 420	61004827		support angle
35	Hex nut; M 8 self-locking	21 05 306		
36	Guide bung	61004238		GS 42 Eck
37	Wash arm bracket	61003516	2	up to mach.-no.: 367 554
	Wash arm bracket; left	61004181		from mach.-no.: 367 555
	Wash arm bracket; right	61004291		
38	Plug; G 3/4"	70005109		
39	O-ring; 26 x 2.5	27 07 062		
40	Hex nut; G 3/4"	61002626		
n.p.	Rear panel	61003836		Option



GS 42

Hood and hood guide

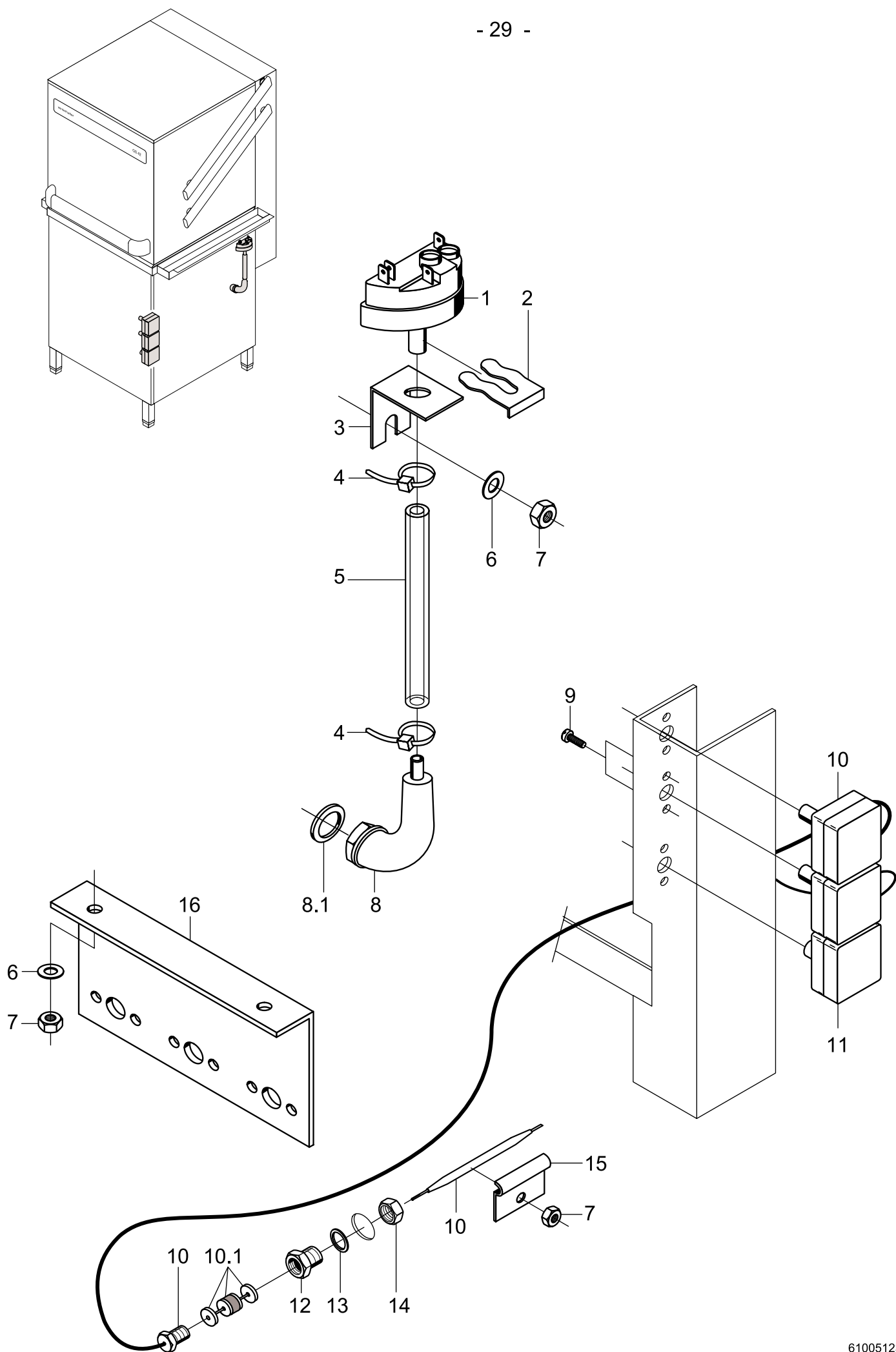
Item	Designation	Part no.	Pc.	Notes
1	Upper door lever	61003646		incl. item 1.1
1.1	Cap for door lever	35 03 027	8	
2	Spacer; \varnothing 16 x 18	35 01 054		
3	Cylinder screw; M 6 x 25	20 19 200		
4	Tension spring	61003534	2	
5	Door lever bearing; 70 x 21 x 39.5	35 01 066	4	
6	Washer; \varnothing 6.4 x \varnothing 12.5 x 1.6	22 01 302		
7	Hex nut; M 6	21 05 304		
8	Loop screw; M 10 x 220	61003866	2	
9	Hex nut; M 10	21 01 306	4	
10	Hex nut; M 5	21 05 302		
12	Angle right for sliding rail	61003966		up to mach.-no.: 349 050
	Angle right for sliding rail	61004095		from mach.-no.: 349 051
	Angle left for sliding rail	61003967		up to mach.-no.: 349 050
	Angle left for sliding rail	61004094		from mach.-no.: 349 051
13	PT-screw; KB 50 x 10	20 17 304		
14	Hose; nom. dia. 5 x 1.5 x 100	40 01 024	2	per metre
15	Sliding rail left	61003963		up to mach.-no.: 367 554
	Sliding rail right	61003962		
	Sliding rail left	61004288		from mach.-no.: 367 555
	Sliding rail right	61004287		
16	Conversion hood	55 28 237		up to mach.-no.: 367 554
	Hood	61004276		from mach.-no.: 367 555
16.1	Cover	61004278		
16.2	Connecting corner	70200109	2	
16.3	Oval profile; front; 17 x 45 x 465	61003765		
16.4	PT-screw; K 40 x 12	20 17 302		
16.5	PT-screw; K 50 x 16	20 17 301	4	
16.6	Washer; \varnothing 5.3 x \varnothing 15.0 x 1.2	22 05 301		
16.7	O-ring; 7 x 2.5	27 07 013	4	
16.8	Sign - type strip	61003686		
16.9	O-ring; 28 x 2.5	27 07 049	4	
16.10	Bearing for hood; \varnothing 60 x \varnothing 29.5 x 24	61003674	4	
16.11	O-ring; 13 x 2.5	27 07 019	4	
16.12	Washer; \varnothing 60 x 0,8	61004437	2	from mach.-no.: 368 713
17	Bearing bolt; M 10 x 33.5	61003644	6	
18	Bearing for rear panel; \varnothing 69 x \varnothing 29.5 x 24	61003675	2	
19	Lower door lever cpl.	61003645	2	incl. item 1.1
20	Hex nut; M 4	21 05 300		
21	Washer; \varnothing 4.3 x \varnothing 8 x 0.5	22 02 202		
22	Limit switch support	61003528		
23	Pan-head screw; M 4 x 25	20 10 215		
24	Limit switch	80003235		



GS 42

Electrical parts I

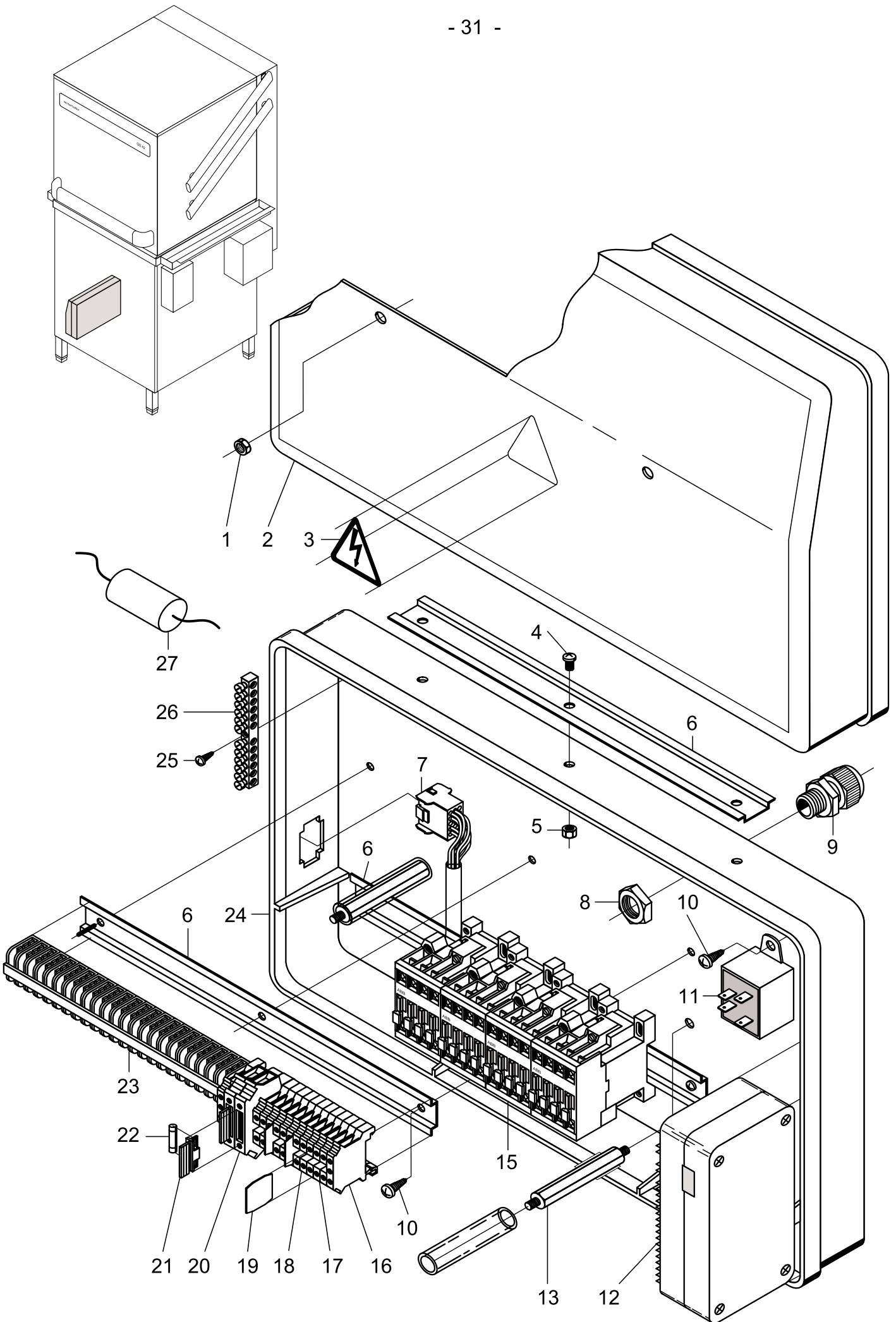
Item	Designation	Part no.	Pc.	Notes
1	Switch panel	61003758		
2	Switch housing	61003875		for GS 42 R and GS 42 Eck R
	Switch housing	61003926		for GS 42 L and GS 42 Eck L
n.p.	Seal; M 5	22 08 503	3	
3	Sheet metal nut; B 3.9	21 17 300	2	
4	Cable harness with plug	61003886		
5	Hex nut; M 5	21 05 302	3	
6	Washer; ø 5.3 x ø 10.0 x 1.0	22 01 300	3	
7	Hex nut; PG 21	31 10 071		
8	Lamp; 230 V	31 08 064		PROGRAMME SEQUENCE
9	Pressure-key; white; 250V	31 24 129		RINSE - MANUAL
10	Pressure-switch; 250V	31 24 128		WASH - MANUAL
11	Pressure-switch; 250V	31 24 166		PROGRAMME II
12	Pressure-switch; 250V	31 24 165		PROGRAMME I
13	Lamp; 230 V	31 08 116		TANK HEATING
14	Pressure-switch; green; 250V	31 24 185		ON / OFF
15	Sheet-metal screw; B 3,9 x 9,5	20 22 302	2	



GS 42

Electrical parts II

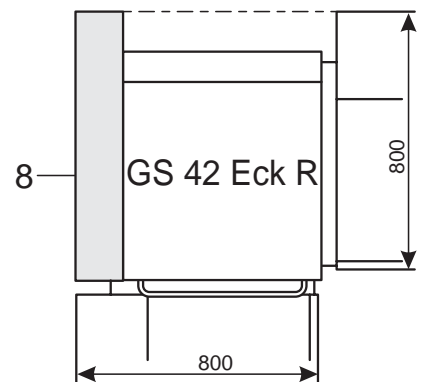
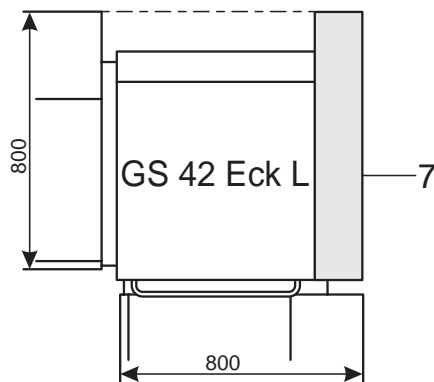
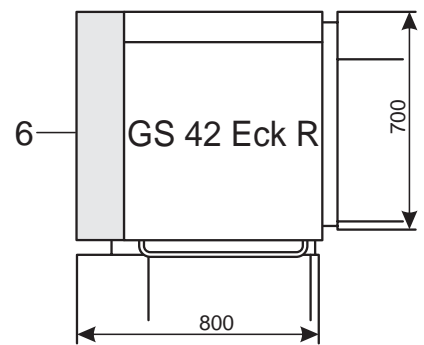
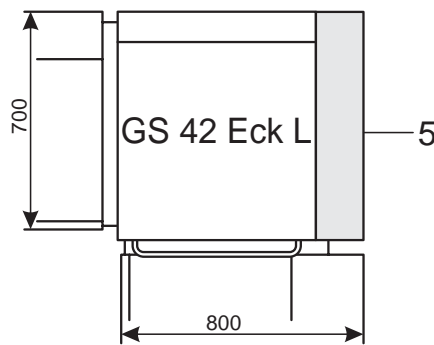
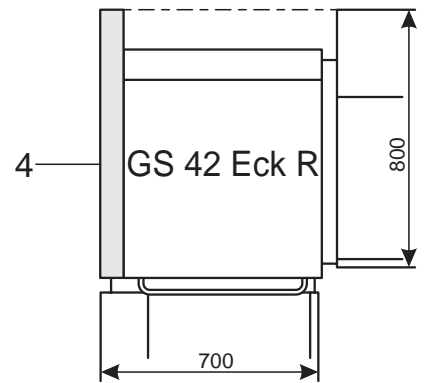
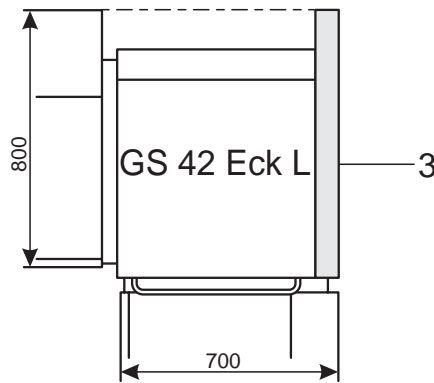
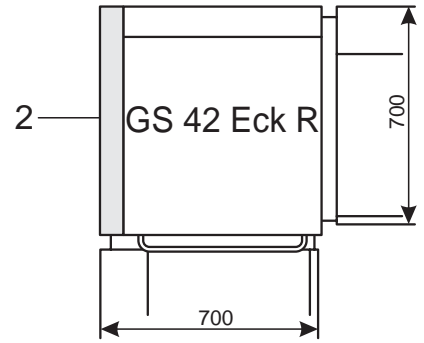
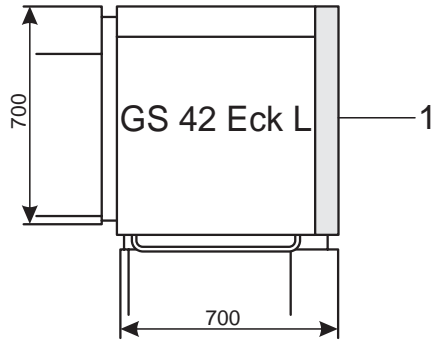
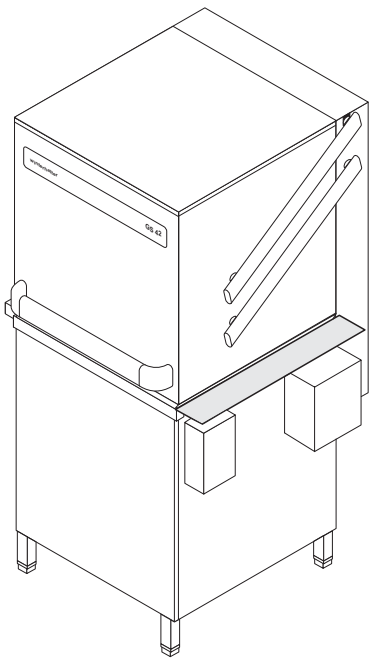
Item	Designation	Part no.	Pc.	Notes
1	Level controller; 105/75; green	31 26 023		
2	Clamping spring for level controller	31 26 001		
3	Level controller holder	61002345		
4	Wire hose clamp; D8,6 x 1	28 02 348	2	
5	Hose; nom. dia. 5 x 1.5 x 120	40 01 024		per metre
6	Washer; \varnothing 5.3 x \varnothing 10.0 x 1.0	22 01 300		
7	Hex nut; M 5	21 05 302		
8	Air chamber cpl.	55 04 024		incl. item 8.1
8.1	O-ring; 24 x 3	27 07 087		
	Seal; \varnothing 26.5 x \varnothing 33 x 2.5			replaced by 5504024
9	Oval-head screw; M 4 x 8	20 10 310		
10	Thermostat; 1750mm long	31 25 013	2	incl. item 10.1
10.1	Stuffing box gland	31 25 012	2	
11	Safety thermostat; 140°C - 10K "OFF"	31 25 030		
12	Stuffing box for thermostat; M 14 x 1	31 25 001		
13	Seal; \varnothing 14.2 x \varnothing 20 x 2.0	27 09 036		
14	Hex nut; M 14 x 1 x 5	31 25 002		
15	Thermostat clip	55 19 011		
16	Thermostat bracket	61003390		up to mach.-no.: 367 554



GS 42

Electrical parts III

Item	Designation	Part no.	Pc.	Notes
1	Hex nut; M 6 self-locking	21 05 304		
2	Switch box cover	61002408		
3	Sign; arrowl	28 03 009		
4	Oval-head screw; M 4 x 8	20 10 310	3	
5	Hex nut; M 4 self-locking	21 05 300	3	
6	Snap-on rail; 7.5 x 35 x 315	61002397	3	
7	Wire assortment	61003883		
8	Hex nut; PG 21	31 10 071	3	
9	Cable gland; PG 21	31 10 070	3	
10	PT-screw; KB 50 x 5	20 17 001	8	
11	Radio interfer. sup. capacitor; 3 x (0.47 μ F + 1M Ω)	31 13 072		only at connection on star-net
12	Electr. progr. switch EPS 1.1; 230V 50-60Hz	31 05 131		
	Electr. programme switch EPS 1.1; 200V; 240V	31 05 132		
13	Bolt; M 6 x 126	61003313	2	
15	Contacteur AF16; 100-250V/50-60HZ AC/DC; 7,5KW	30000861	4	
16	Universal terminal; USLKG 10 gn-ye	31 09 059	2	
17	Universal terminal; UK 10 blue	31 09 058	2	
18	Universal terminal; UK 10 grey	31 09 057	9	
n.p.	Fixed bridge; 3-pin; FB 3-8	31 09 138	3	
n.p.	Fixed bridge; 2-pin; FB 2-8	31 09 128		
19	Isolating disk; T-SK	31 09 066	3	
20	Universal fuse terminal UK-Si	31 09 063	2	
21	Fused plug	31 09 072	2	
22	Fine-wire fuse; 250V; 6.3A	31 11 043	4	incl. 2 reserve
23	Strip terminal BK 4 - FS/FS	31 09 025	23	
n.p.	Straps	31 09 012	6	
24	Relay box, bottom part	61002617		
25	PT-screw; KB 30 x 14	20 17 002		
26	Terminal block; PE KLB 12/SEV	31 09 094		
27	Radio interference suppr. capacitor; 33000pF; 250V	31 13 073		only at connection on star-net
n.p.	Feeder cable; 5 x 2.5 mm ² , 20A	31 23 132		
	Feeder cable; 4 x 4 mm ² , 25A	31 23 129		



GS 42

Panel connection set

Item	Designation	Part no.	Pc.	Notes
1	Panel connection set; 700/700 L-R	61003920		
2	Panel connection set; 700/700 R-L	61003916		
3	Panel connection set; 800/700 L-R	61003923		
4	Panel connection set; 800/700 R-L	61003919		
5	Panel connection set; 700/800 L-R	61003922		
6	Panel connection set; 700/800 R-L	61003918		
7	Panel connection set; 800/800 L-R	61003921		
8	Panel connection set; 800/800 R-L	61003917		

--	--	--	--	--

