

Spare parts list GS 72

Edited: 10/91
Revised: 19.03.10

Part-No.: 89000872

Summary

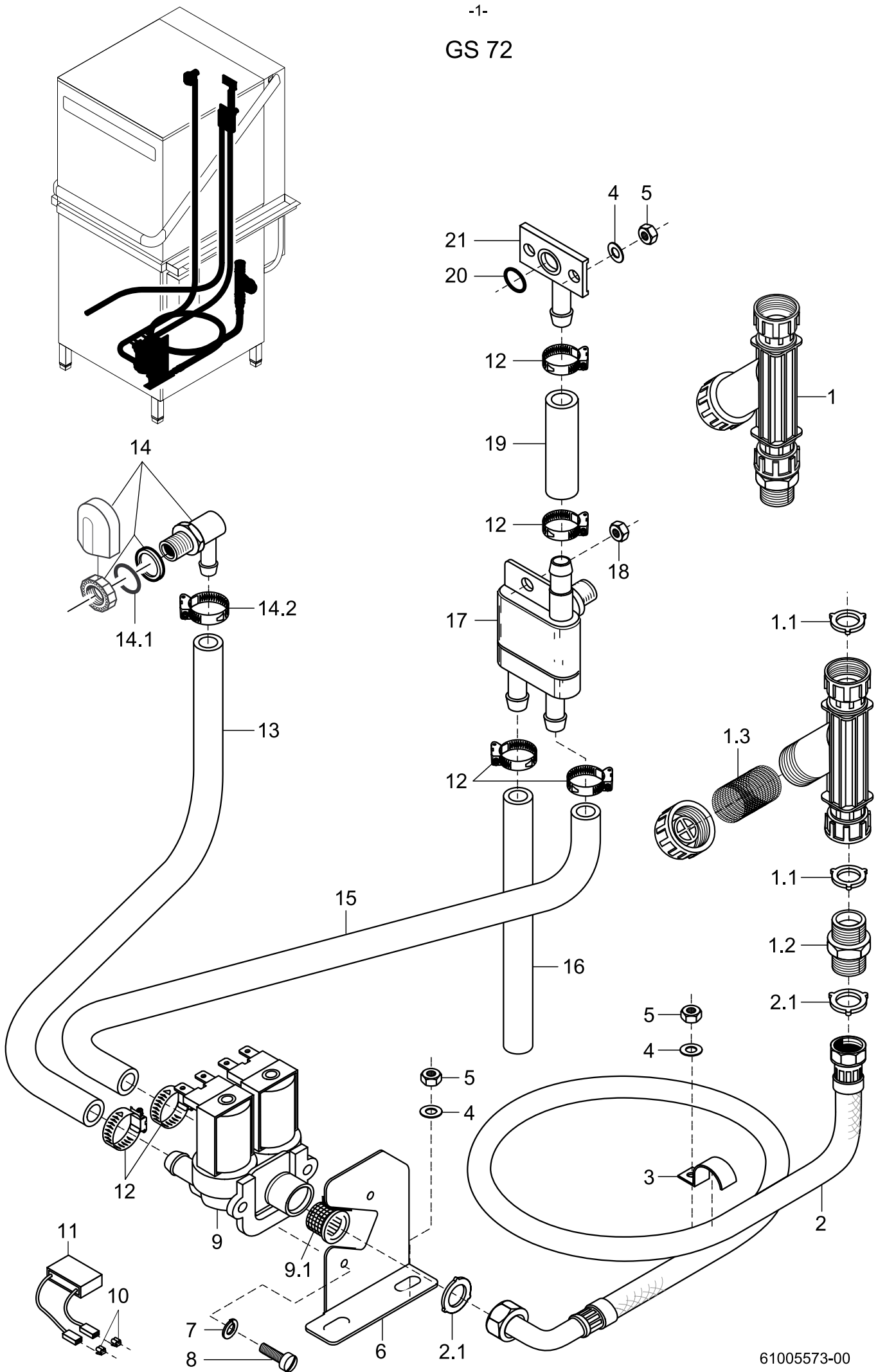
Water inlet	Page 1 and 2
Water inlet Tundish (Great Britain)	Page 3 and 4
Water drain, Mediamat and tank heating	Page 5 and 6
Wash system I (Mach.-no.: ⇨ 220 235)	Page 7 and 8
Wash system I (Mach.-no.: 220 236 ⇨)	Page 9 and 10
Wash system II	Page 11 and 12
Wash system III (Mach.-no.: ⇨ 182 618)	Page 13 and 14
Wash system III (Mach.-no.: 182 619 ⇨)	Page 15 and 16
Rinsing I	Page 17 and 18
Rinsing II - AquaMatik	Page 19 and 20
Rinsing III - Aquamatik	Page 21 and 22
Rinsing IV	Page 23 and 24
Dosing	Page 25 and 26
Hood and hood guide	Page 27 and 28
Container, rack guide and channels	Page 29 and 30
Panelling	Page 31 and 32
Electrical parts I	Page 33 and 34
Electrical parts II	Page 35 and 36
Electrical parts III (Mach.-no.: ⇨ 219 659)	Page 37 and 38
Electrical parts III (Mach.-no.: 219 660 ⇨)	Page 39 and 40
Glass washing kit (option)	Page 41 and 42

Please note the following points with regard to this list:

See separate list for racks and accessories.

Enter the required quantity in the column marked "Pc." if more than 1 part is installed and if this part is not a standard part.

-1-
GS 72

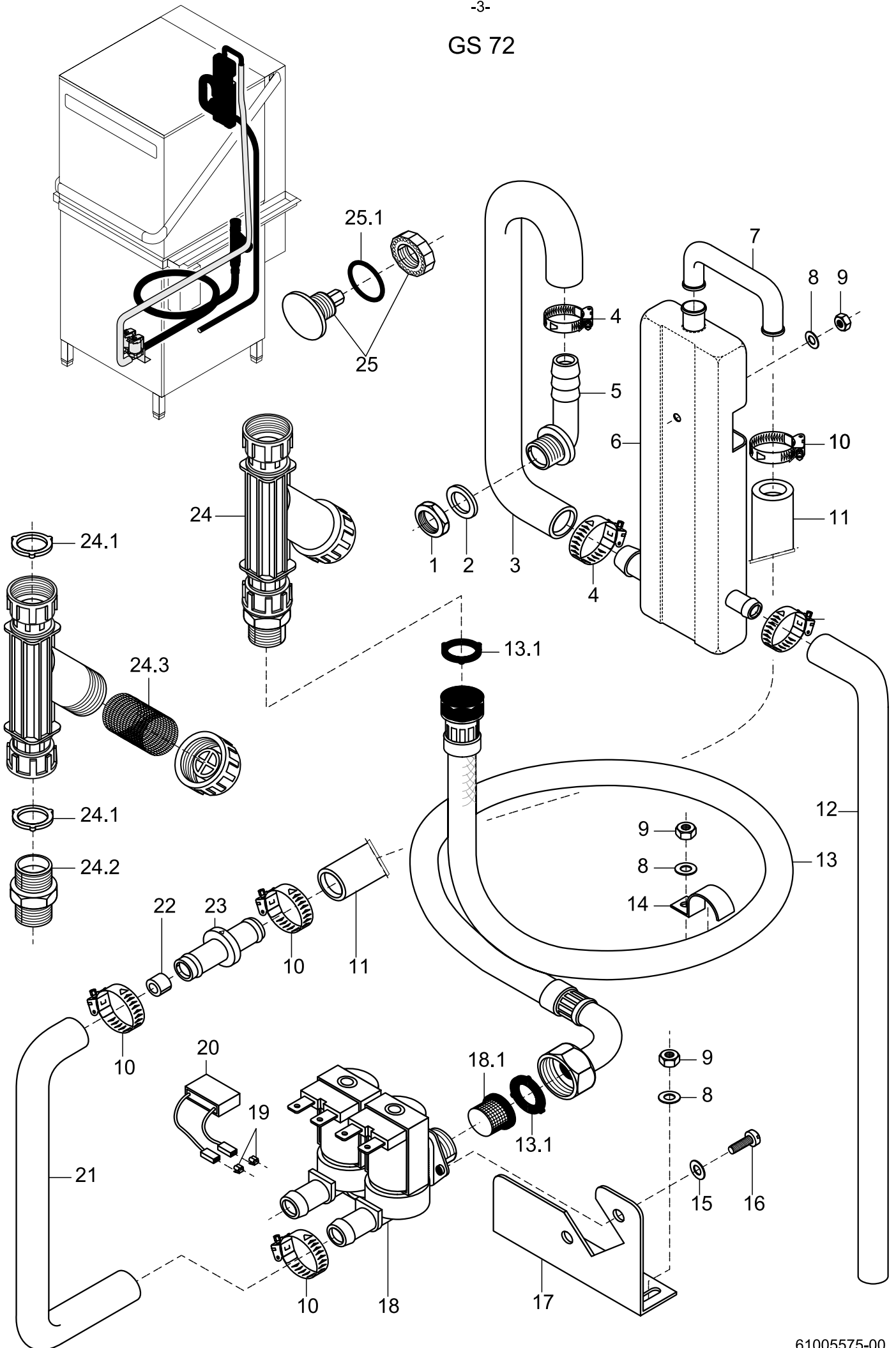


GS 72

Water inlet

Item	Designation	Part No.	Pc.	Notes
1	Dirt collector cpl.	80002153		incl. items 1.1 - 1.3
1.1	Seal; \varnothing 16 x \varnothing 24 x 3.0	80002241	2	
1.2	Union stem; G 3/4" x 40; width A/F30	80002167		
1.3	Dirt trap	80002728		
	Strainer for dirt trap with right-angled outlet	31 06 135		
2	Metal hose; nom. dia. 13 X 2000; G3/4"	29 01 321		incl. item 2.1
2.1	Seal; \varnothing 16 x \varnothing 24 x 3.0	80002241	2	
n.p.	Metal hose; DN13 X 1000 MM; G3/4"	30000332		Additional equipment
3	Clip	55 25 017		
4	Washer; \varnothing 5.3 x \varnothing 10.0 x 1.0	22 01 300		
5	Hex nut; M 5 self-locking	21 05 302		
6	Support solenoid valve	61004065		
7	Lock washer; B 4	23 03 304		
8	Pan-head screw; M 4 x 8	20 10 309		
9	Double solenoid valve; 220-240V; 50/60Hz	31 06 182		incl. item 9.1
	Double solenoid valve; 180-220V; 50/60Hz	31 06 200		incl. item 9.1
9.1	Dirt trap	31 06 186		
n.p.	Solenoid valve (flow controller 15l); 220-240V; 50/60Hz	31 06 180	2	with double water connection
10	Tab connector	31 12 018	2	with AquaMatik; connect parallel to solenoid valve
11	RC element; 0.15 μ F; 3.3k Ω	31 13 114		
12	Hose clip; \varnothing 14 - 24 x 9	28 02 108		
13	Shaped hose; nom. dia. 12.5 x 4.0 x 1300	40 03 051		cut to size
14	Water inlet set	55 31 007		incl. items 14.1, 14.2
14.1	Seal; D21 x D28 x 2,0	27 09 011		replaced by 55 31 007
14.1	Seal; \varnothing 20.5 x \varnothing 28.5 x 2.0	27 01 002		replaced by 55 31 007
14.1	O-ring; 20 x 3	27 07 031		
14.2	Hose clip; \varnothing 14 - 24 x 9	28 02 108		
15	Shaped hose; nom. dia. 12.5 x 4.0 x 1300	40 03 050		cut to size
	Hose; nom. dia. 13.5 x 3.5 x 1600	40 02 029		cut to size; Great Britain
16	Hose; nom. dia. 13.5 x 3.5 x 250	40 02 029		per metre
17	Backflow restrictor, top	35 01 193		
18	Hex nut; M 6	21 01 304		
19	Hose; nom. dia. 13.5 x 3.5 x 250	40 02 029		per metre
20	O-ring; 13 x 2.5	27 07 019		
21	Vent; \varnothing 13	61003425		

GS 72

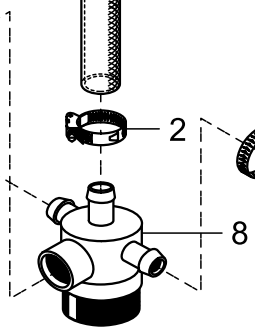
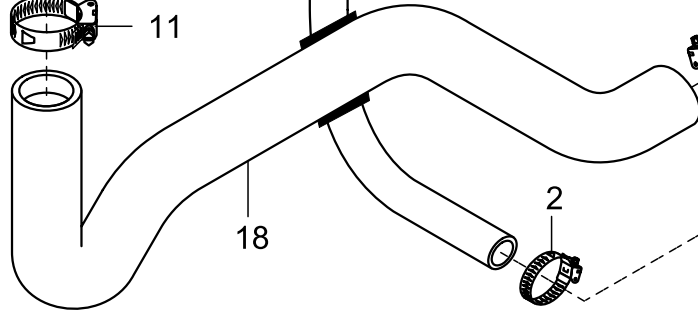
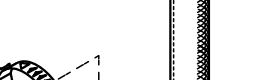
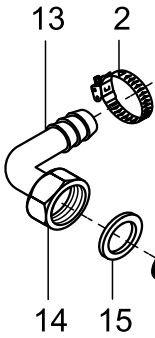
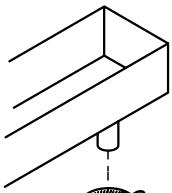
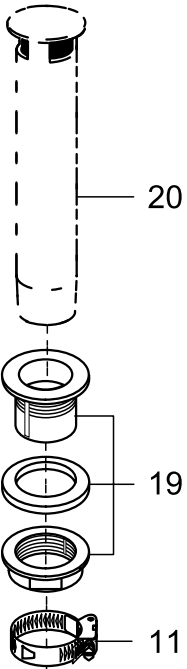
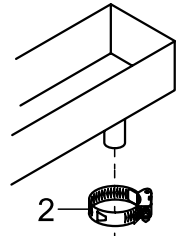
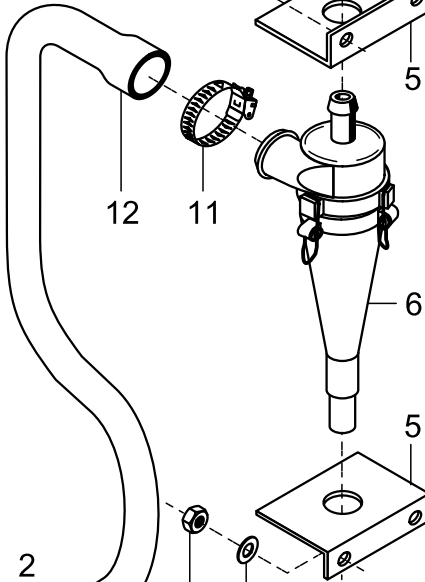
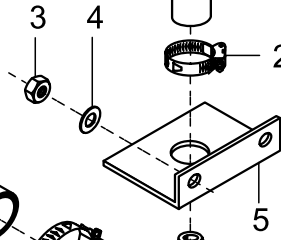
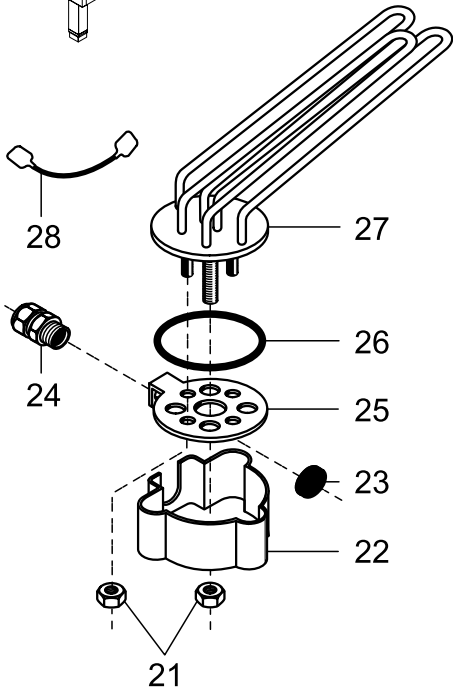
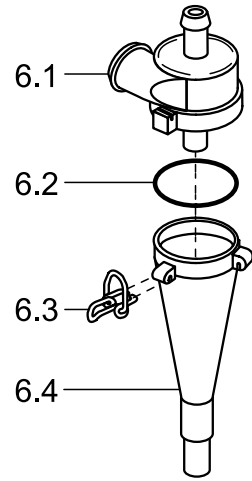
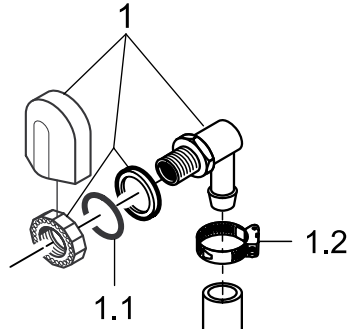
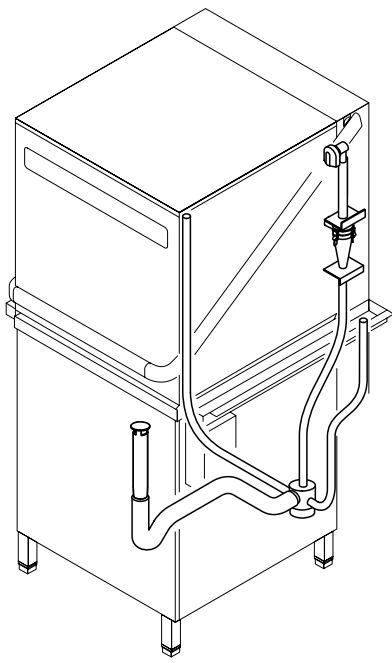


GS 72

Water inlet - Tundish (Great Britain only)

Item	Designation	Part No.	Pc.	Notes
1	Lock nut; G 3/4" x 18; width across flats 32	30 09 502		
2	Seal; \varnothing 26 x \varnothing 36 x 2.0	27 01 003		
	O-ring; 24 x 3.0	27 07 087		
3	Hose bend; nom. dia. 25 x 4.0	61004322		
4	Hose clip; \varnothing 24 - 44 x 12	28 02 309		
5	Wash manifold	62002887		adapt
6	Intermediate tank	60002542		
7	Pipe bend; \varnothing 12 x \varnothing 14 x 2.0	60002507		
8	Washer; \varnothing 5.3 x \varnothing 10.0 x 1.0	22 01 300		
9	Hex nut; M 5 self-locking	21 05 302		
10	Hose clip; \varnothing 14 - 24 x 9	28 02 108		
11	Hose; nom. dia. 13.5 x 3.5 x 1300	40 02 029		per metre
12	Shaped hose; nom. dia. 12.5 x 4.0	40 03 050		adapt
13	Metal hose; nom. dia. 13 X 2000; G3/4"	29 01 321		incl. item 13.1
13.1	Seal; \varnothing 16 x \varnothing 24 x 3.0	80002241	2	
14	Clip	55 25 017		
15	Lock washer; B 4	23 03 304		
16	Pan-head screw; M 4 x 8	20 10 309		
17	Support solenoid valve	61004065		
18	Double solenoid valve; 220-240V; 50/60Hz	31 06 182		incl. item 18.1
18.1	Dirt trap	31 06 186		
19	Tab connector	31 12 018	2	
20	RC element; 0.15 μ F; 3.3k Ω	31 13 114		
21	Hose; nom. dia. 13.5 x 3.5 x 320	40 02 029		per metre
22	Flow controller (5 l/min)	31 06 195		
23	Adaptor; 54 x \varnothing 20	61004511		
24	Dirt collector cpl.	80002153		incl. items 24.1 - 24.3
24.1	Seal; \varnothing 16 x \varnothing 24 x 3.0	80002241	2	
24.2	Union stem; G 3/4" x 40; width A/F30	80002167		
24.3	Dirt trap	80002728		
	Strainer for dirt trap with right-angled outlet	31 06 135		
25	Plug; G 3/8"	70004899		incl. item 25.1
25.1	O-ring; 16 x 2.5	27 07 001		

GS 72



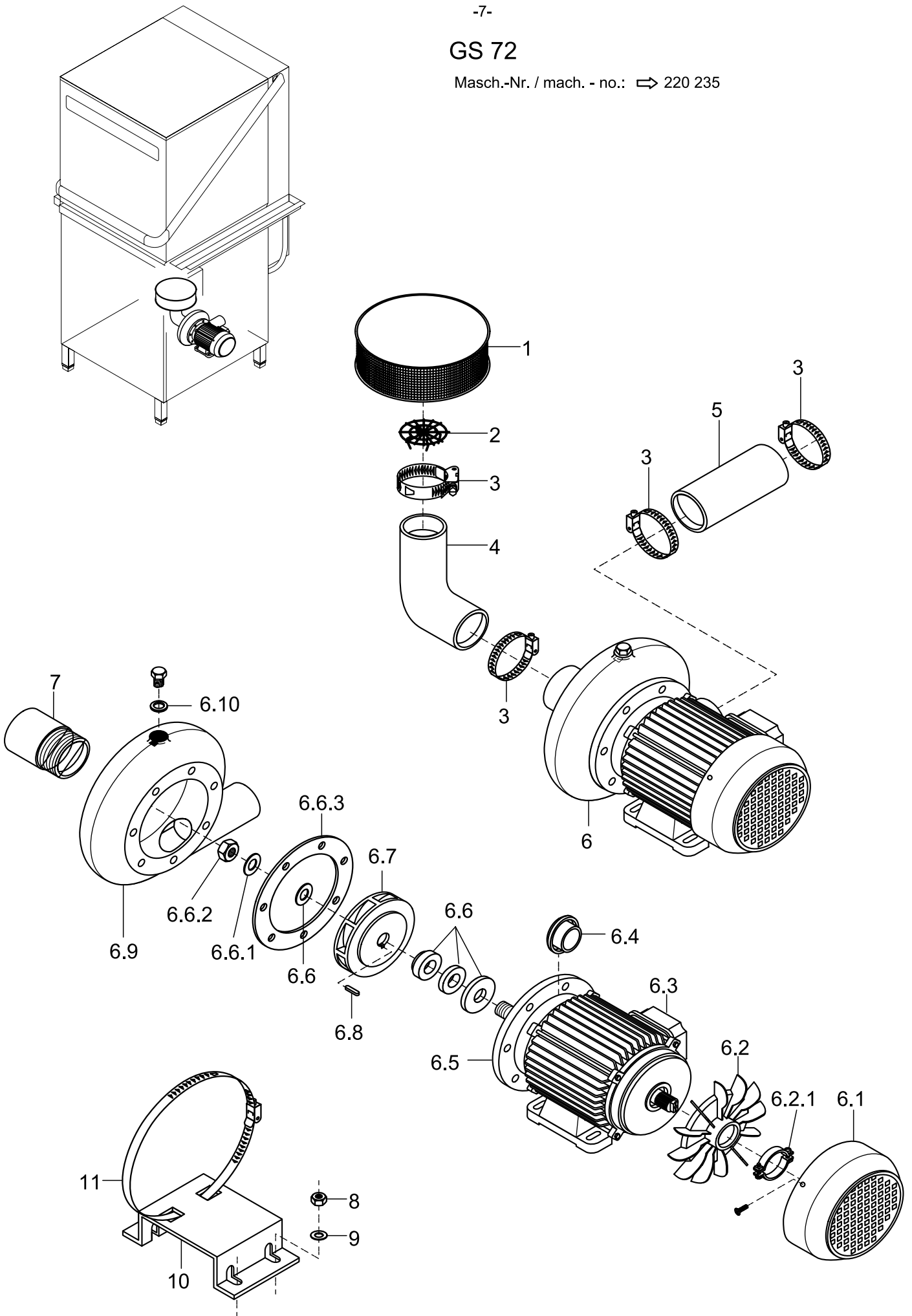
GS 72

Water drain, Mediamat and tank heating

Item	Designation	Part No.	Pc.	Notes
1	Set Mediamat inlet	55 31 001		incl. items 1.1, 1.2
1.1	Seal; D21 x D28 x 2,0	27 09 011		replaced by 55 31 001
1.1	Seal; ø 20.5 x ø 28.5 x 2.0	27 01 002		replaced by 55 31 001
1.1	O-ring; 20 x 3	27 07 031		
1.2	Hose clip; ø 20 - ø 30 x 12	28 02 109		
2	Hose clip; ø 20 - ø 30 x 12	28 02 109		
3	Hex nut; M 5 self-locking	21 05 302		
4	Washer; ø 5,3 x ø 12 x 0,8	22 02 313		
5	Retaining angle	61000658	2	
6	Mediamat cpl.	55 27 040		incl. items 6.1 - 6.4
6.1	Head piece inlet; ø 30	35 01 124		
6.2	O-ring; 51 x 3.0	27 07 043		
6.3	End piece fastener; ø 2	28 04 041	4	
6.4	Accelerator; ø 75 x 169 x ø 4.3	35 01 035		
7	Fabric hose; nom. dia. 19 x 3.5 x 750	40 01 016		per metre
8	Mediamat drain; G 1 1/2"; ø 40	35 01 080		
9	Hose reduction elbow; 90°; nom. dia. 19 x nom. dia. 22 x 1,75; 125 x 480	61002466		
10	Hose reduction elbow; 90°; nom. dia. 19 x nom. dia. 22 x 1,75; 200 x 670	61002799		
n.p.	Reducing elbow; nom dia. 19 x nom. x nom. dia. 22	61002800		angled design
11	Hose clip; ø 32 - ø 52 x 12	28 02 110		
12	Reduction hose; nom. dia. 16 x DN 30 x 5.0 x 640	40 03 036		
13	Mediamat connecting bend	29 06 524		
14	Cap nut; G 3/4" x ø 20; width A/F 30 x 14	29 07 203		
15	Seal; ø 19.5 x ø 24 x 1.5	27 09 010		
16	Mediamat connecting nipple; G 1/2" x G 3/4" x 32	30 11 502		
17	O-ring; 20 x 3.5	27 07 040		
18	Siphon	55 05 048		cast iron pump; to 220 235
	Siphon	61003408		plastic pump; from 220 236
19	Standpipe valve base; G 1 1/4" x 43	61002211		
20	Standpipe; overflow height 290mm	61002517		
21	Hex nut; M 5	21 01 203		
22	Cap	31 03 014		
23	Hex nut; PG 13.5	31 10 041		
24	Cable gland; PG 13.5	31 10 040		
25	Heating element flange	31 03 067		
26	O-ring; 43 x 7.0	27 07 088		
27	Heating element cranked; 6.0kW; 3 x 230/400V	31 03 025		
	Heating element cranked; 6.0kW; 3 x 240/420V	31 03 042		
	Heating element cranked; 6.0kW; 3 x 200/346V	31 03 045		
28	Star bridge with nozzle; 2.5 mm ²	31 23 088	2	

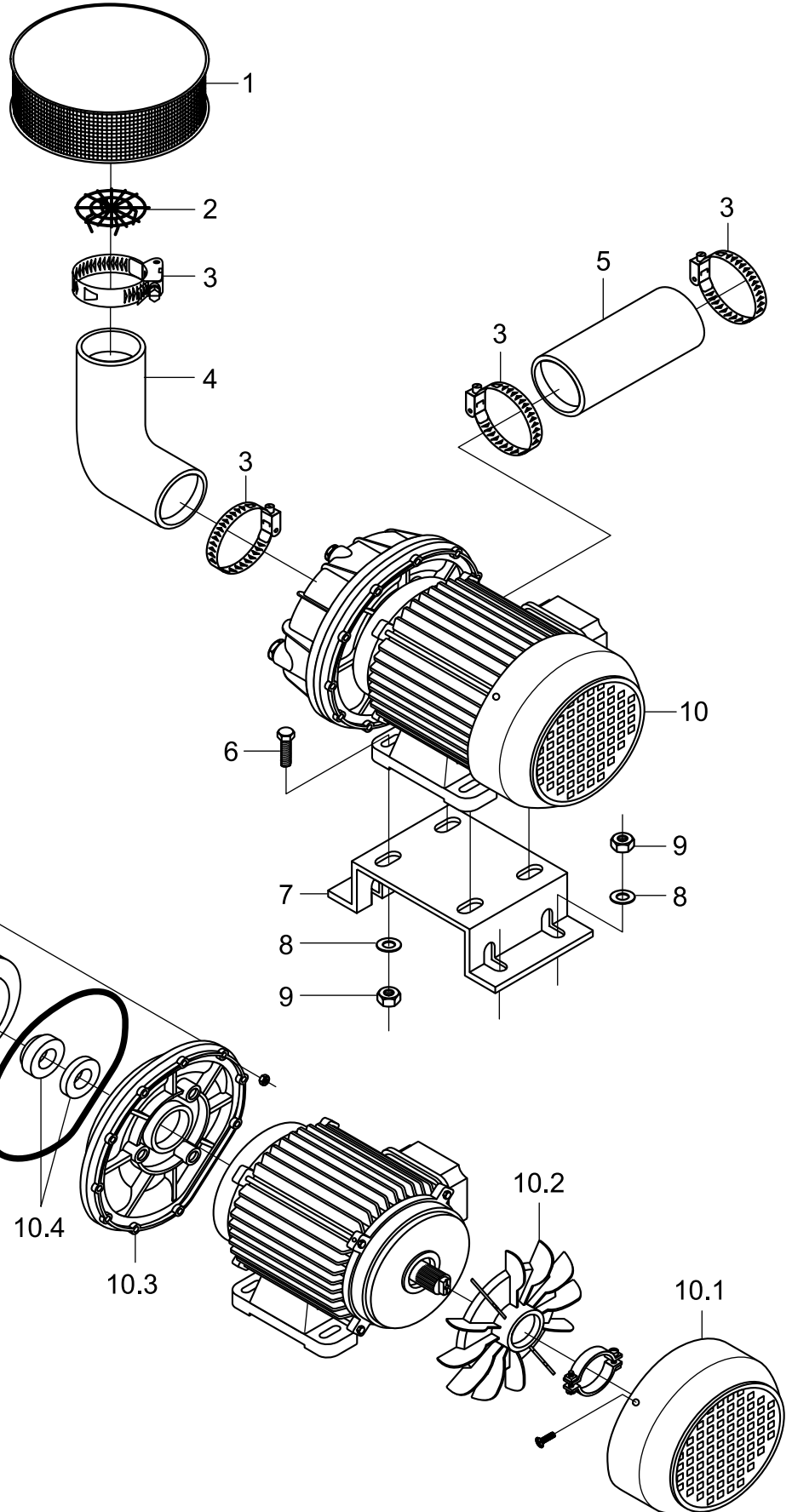
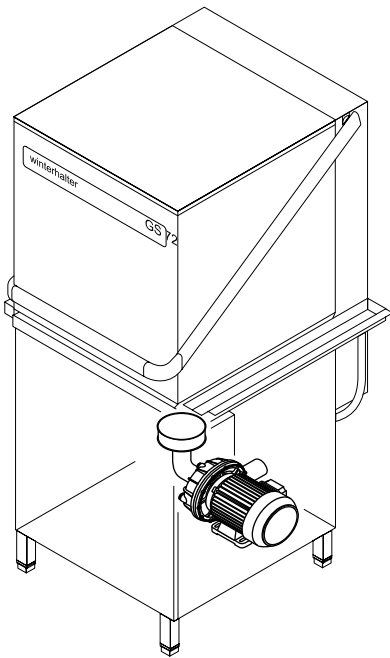
GS 72

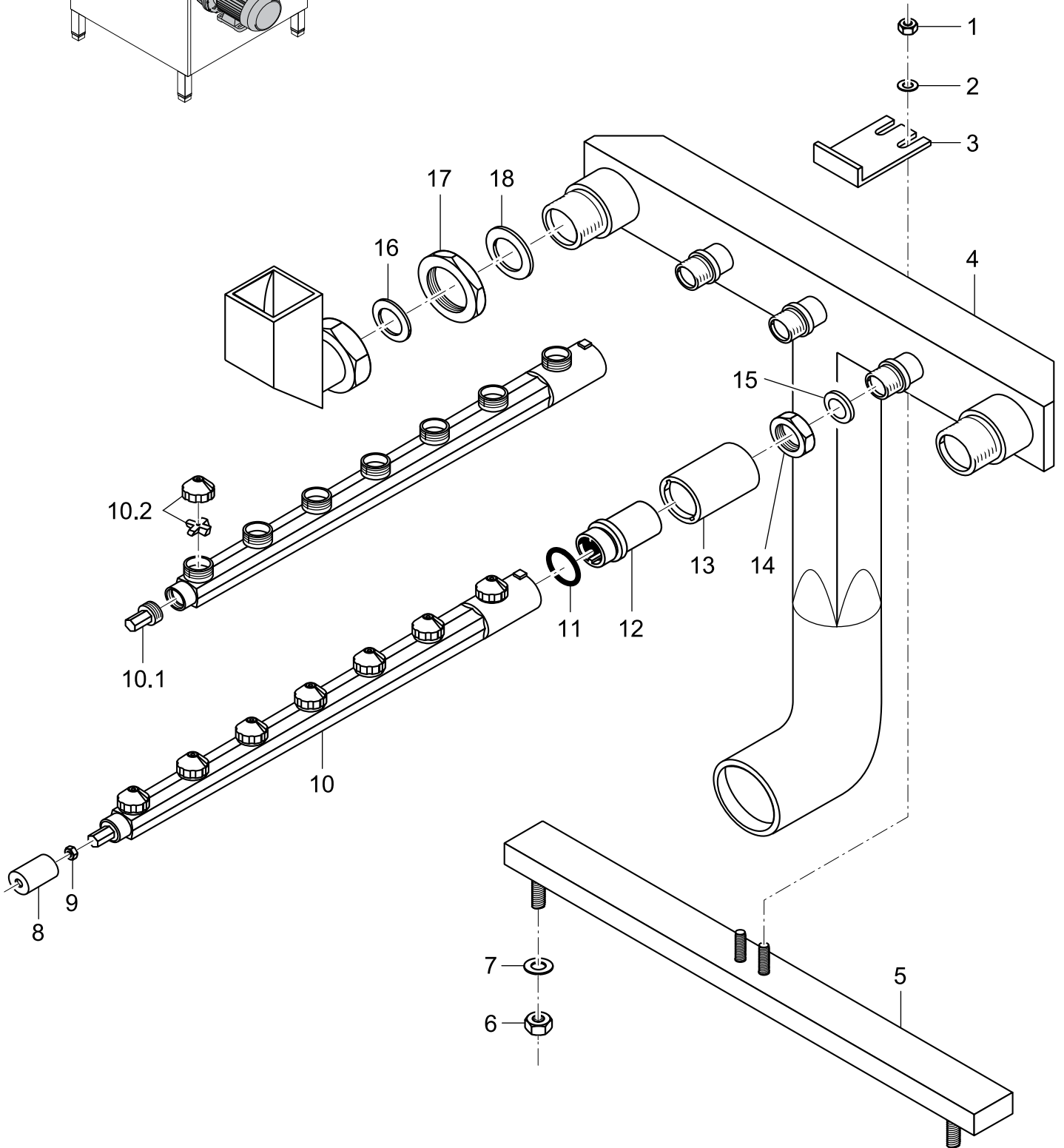
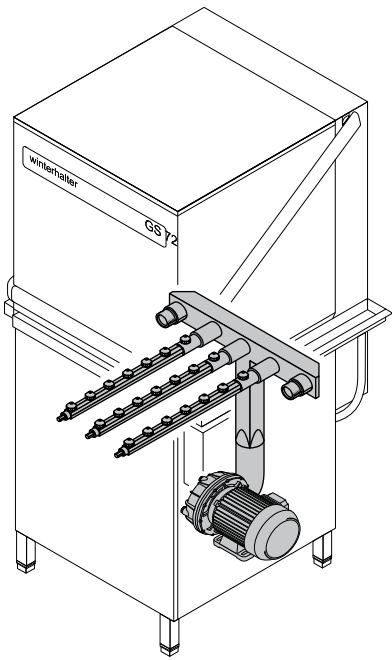
Masch.-Nr. / mach. - no.: ⇨ 220 235



GS 72

Masch.-Nr. / mach. - no.: 220 236 →





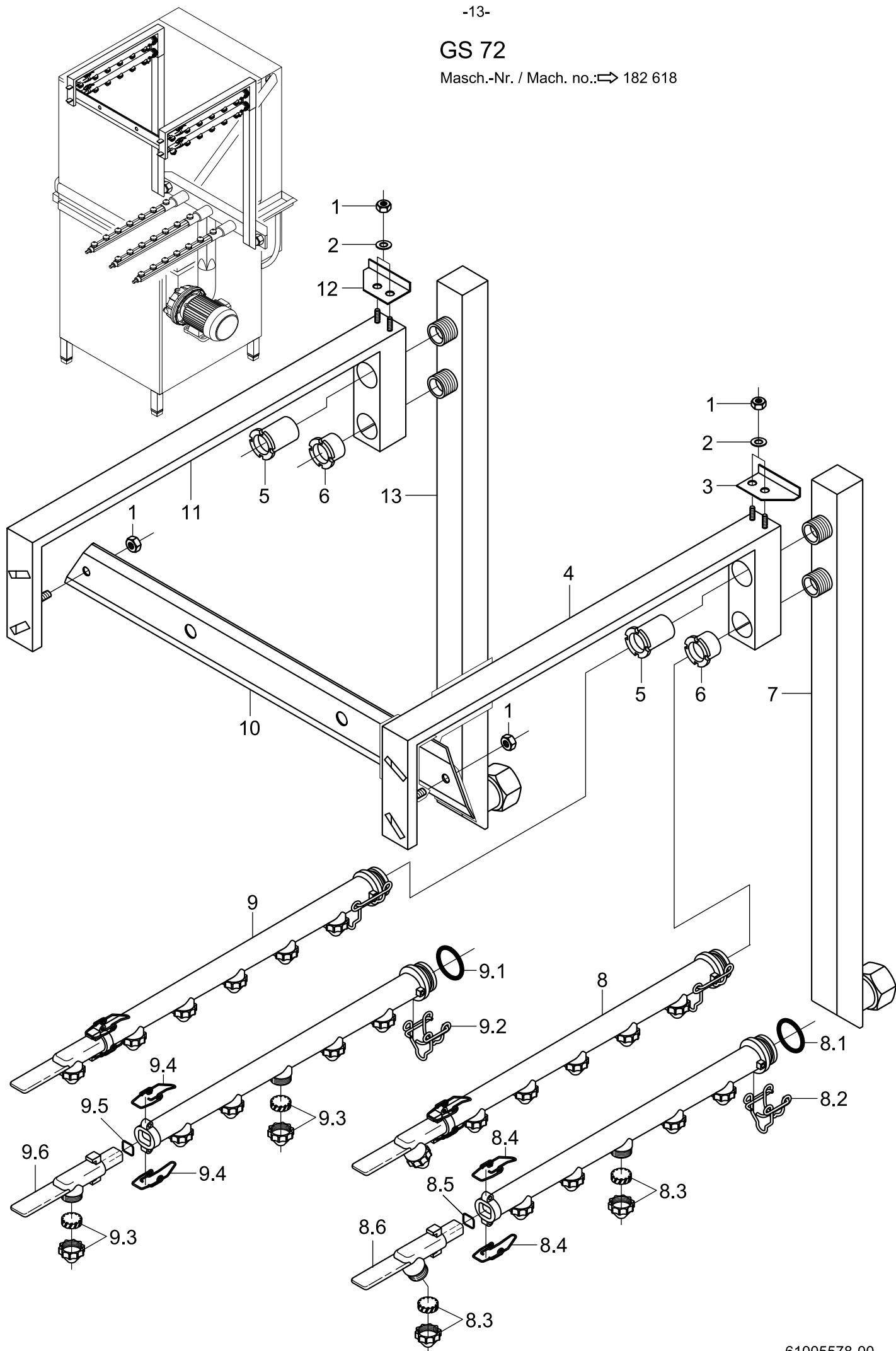
GS 72

Wash system II

Item	Designation	Part No.	Pc.	Notes
1	Hex nut; M 5	21 01 303		
2	Washer; \varnothing 5.3 x \varnothing 10.0 x 1.0	22 01 300		
3	Support bracket for wash manifold	61002632		
4	Wash manifold; straight	61002551		
5	Brace for housing rear panel	61002222		
6	Hex nut; M 6	21 01 304		
7	Washer; \varnothing 6.4 x \varnothing 12.5 x 1.6	22 01 302		
8	Guiding bush for washarm; \varnothing 25 x 33; \varnothing 15	61002263		
9	Hex nut; M 5 self-locking	21 05 302		
10	Wash arm cpl.	61001965	3	incl. items 10.1 - 10.2
10.1	Wash arm plug	35 01 210	3	
10.2	Wash nozzle	60002465	21	
11	O-ring; 28 x 2.5	27 07 049	3	
12	Locking nut; \varnothing 38 x 69.5; G 3/4"	61004060	3	up to mach.-no.: 332 249 remove item 14
13	Locking ring; \varnothing 49 x 70	61002024	3	
14	Hex nut; G 3/4" X 5,0; SW32	61002626	3	up to mach.-no.: 332 249
15	Seal; \varnothing 27 x \varnothing 34 x 2.0	27 09 025	3	
16	Seal; \varnothing 30 x \varnothing 38 x 2.0	27 09 031	2	
17	Lock nut; G 1 1/2"; width across flats 50 x 11.5	61002545	2	
18	Seal \varnothing 55 x \varnothing 43 x 2	61002568	2	

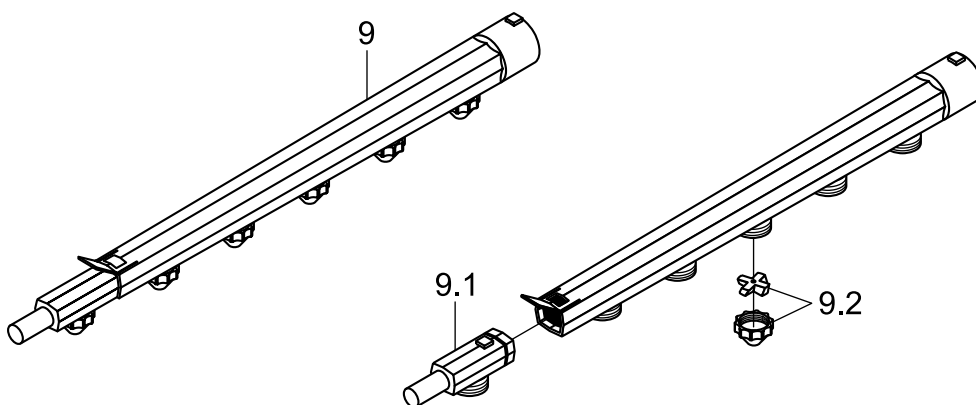
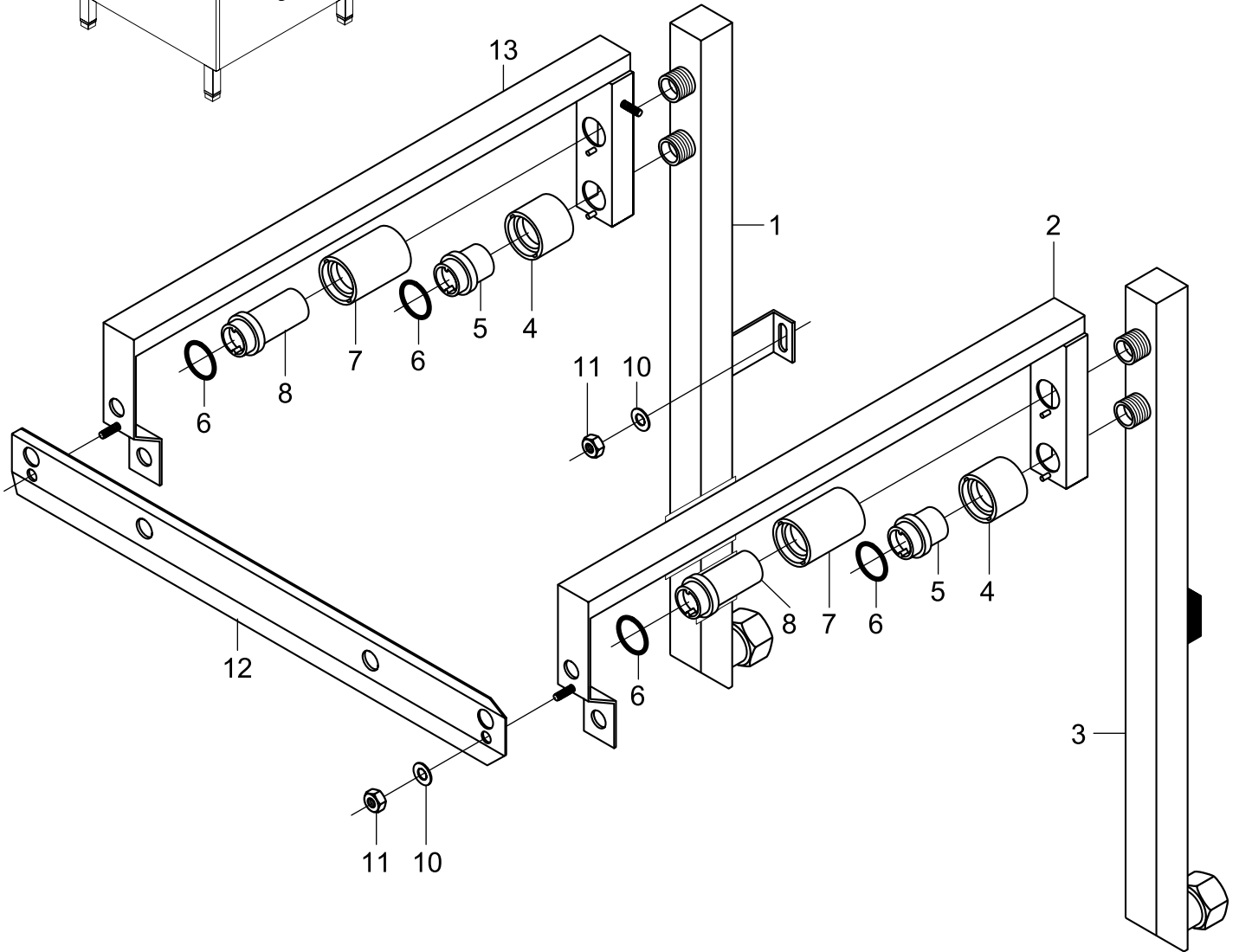
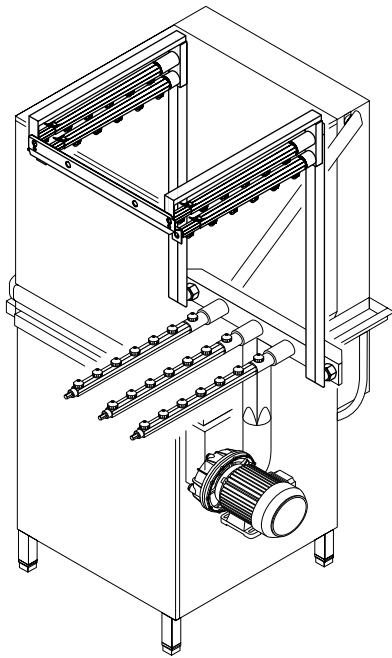
GS 72

Masch.-Nr. / Mach. no.: ⇨ 182 618



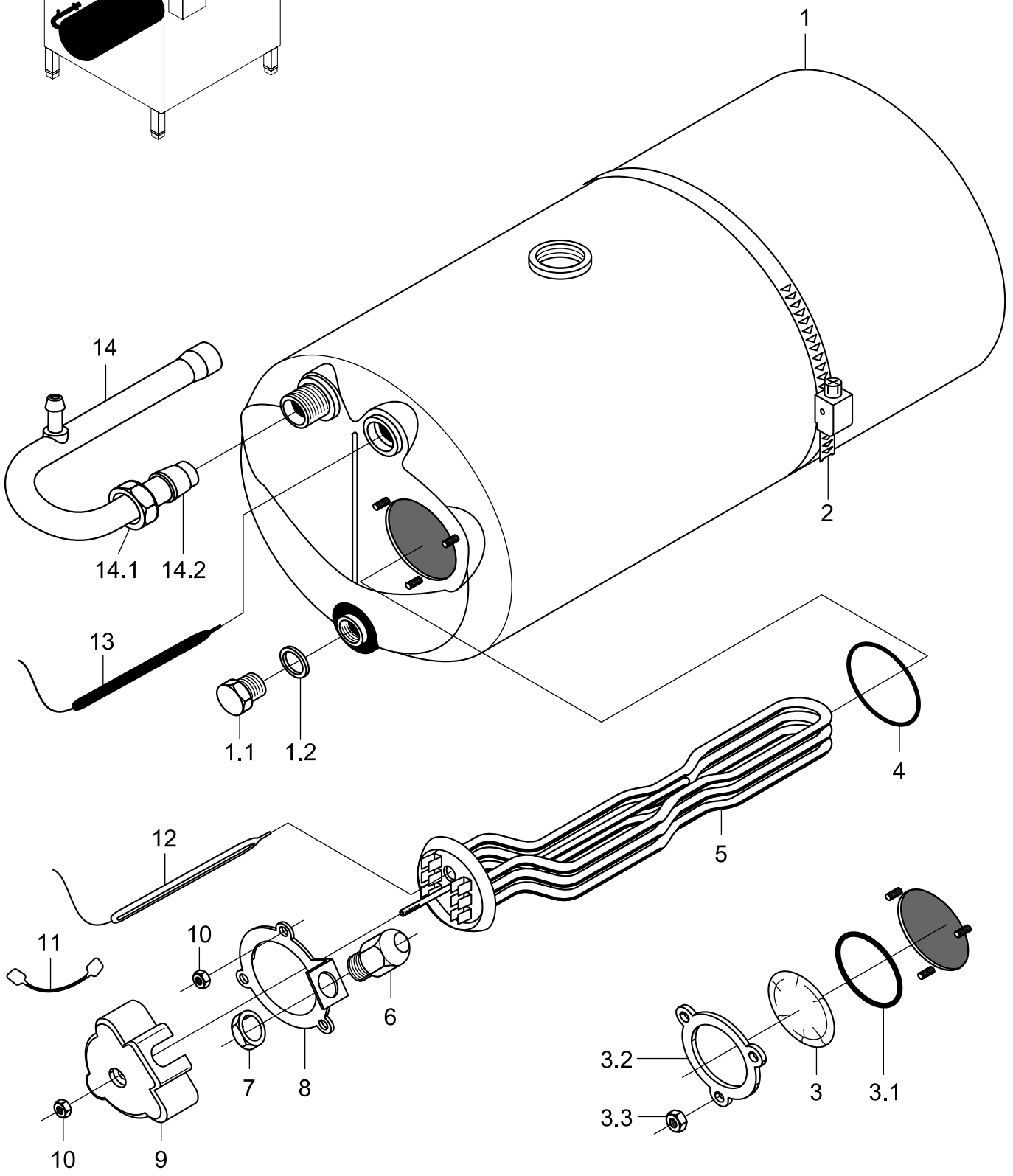
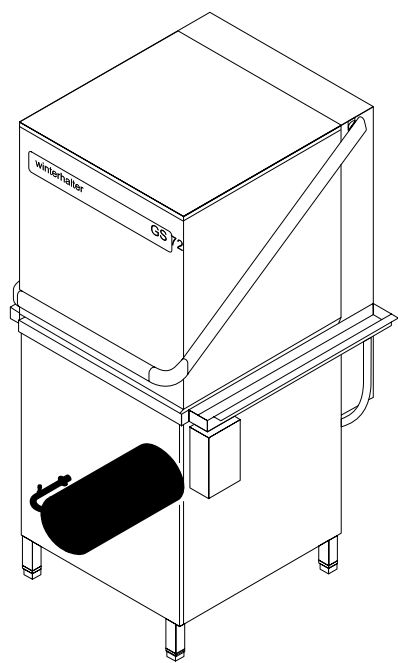
GS 72

Masch.-Nr. / Mach. no.: 182 619 →



GS 72

Nachspülung I
Rinsing I
Rinçage I

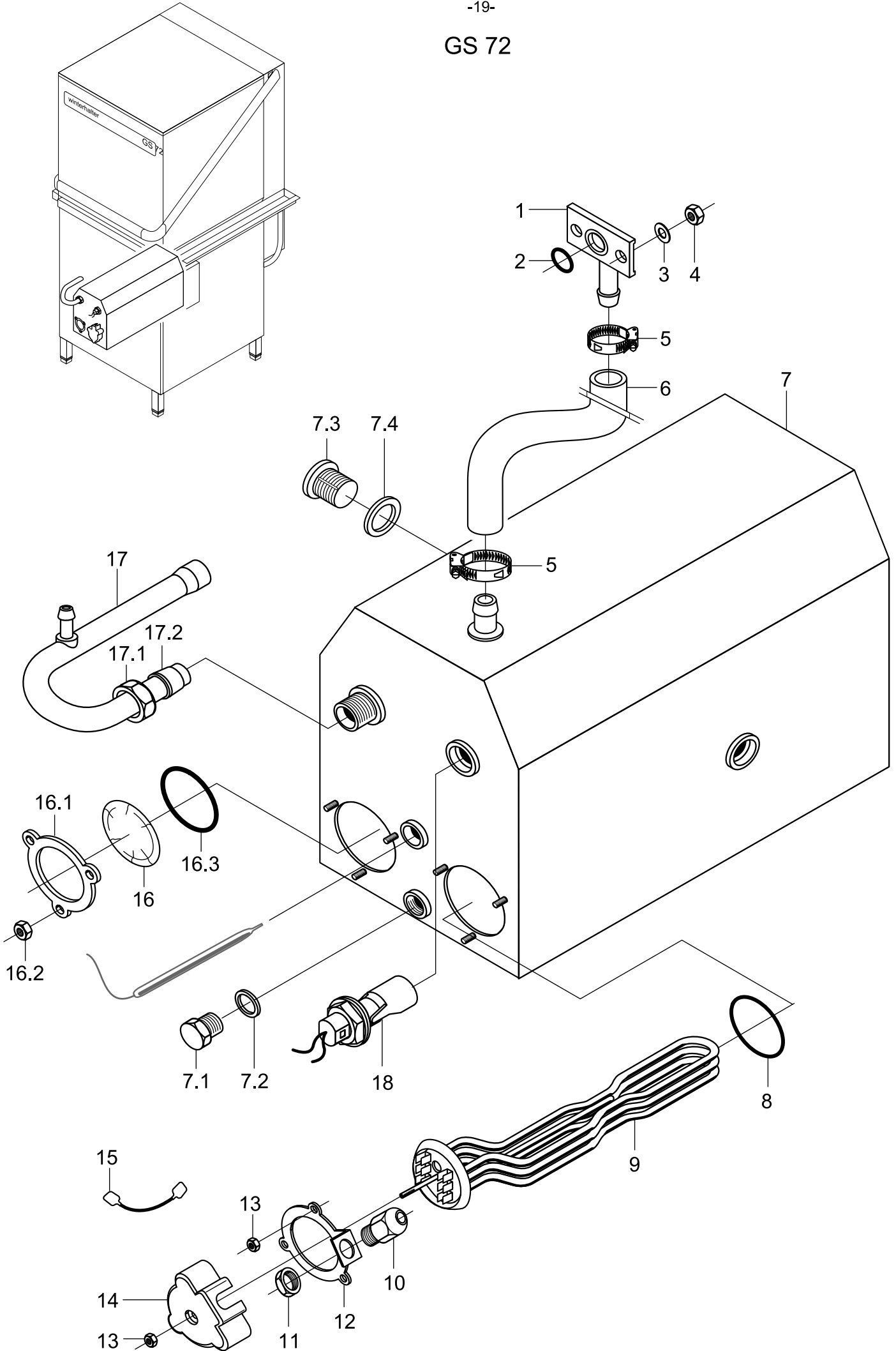


GS 72

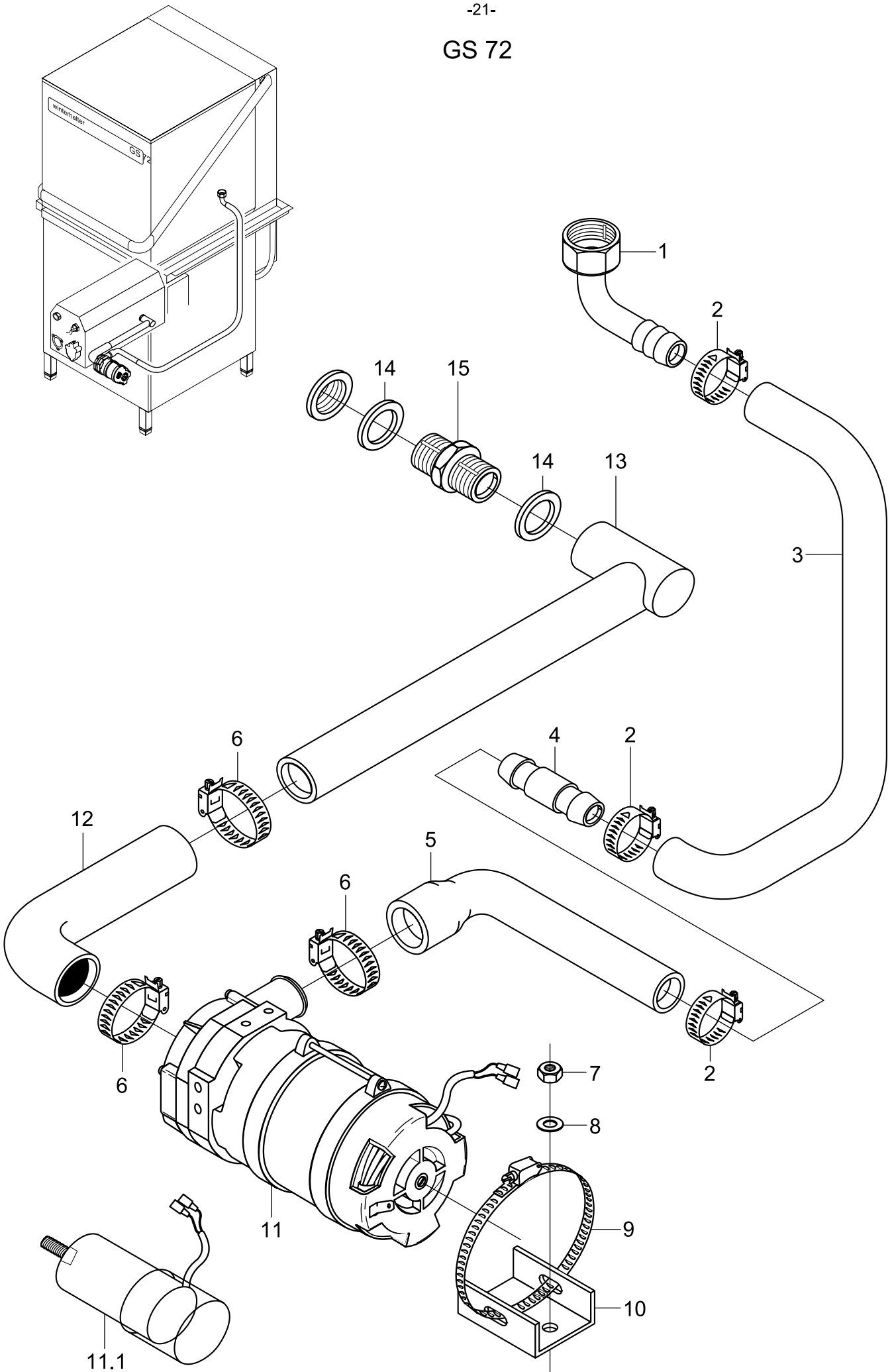
Rinsing I

Item	Designation	Part-No.	Pc.	Notes
1	Boiler, 2-hole, cpl.	55 12 032		incl. items 1.1, 1.2
1.1	Hex-head screw; M 10 x 16	20 01 352		
1.2	Seal; ø 10 x ø 18 x 1.5	27 03 003		
2	Hose clip; ø 50 - ø 215 x 12	28 02 126		
3	Blank flange; ø 60	60002787		incl. items 3.1 - 3.3
3.1	O-ring; 43 x 7.0	27 07 088		
3.2	Clamping plate	01 17 003		
3.3	Hex nut; M 5	21 01 203		
4	O-ring; 43 x 7.0	27 07 088		
5	Heating element cranked; 6.0kW; 230V/400V/3	31 03 017		
	Heating element cranked; 6.0kW; 240V/420V/3	31 03 043		
	Heating element cranked; 6.0kW; 200V/346V/3	31 03 046		
6	Cable gland; PG 13.5	31 10 040		
7	Hex nut; PG 13.5	31 10 041		
8	Clamping plate	55 19 018		
9	Cap	31 03 014		
10	Hex nut; M 5	21 01 203		
11	Star bridge with nozzle; 2.5 mm ²	31 23 088	2	
12	Safety thermostat; 140°C - 10K "OFF"	31 25 030		
13	Thermostat; 1750mm long	31 25 013		
14	Boiler inlet bend cpl.	55 09 054		incl. items 14.1, 14.2
14.1	Cap nut; G 1/2" x ø 12.2; width across flats 24	29 07 201		
14.2	Cutting ring; ø 15 x 10; nom. dia. 12	29 07 300		
o.P.	Set; conversion boiler; 6kW to 12 kW	55 28 203		

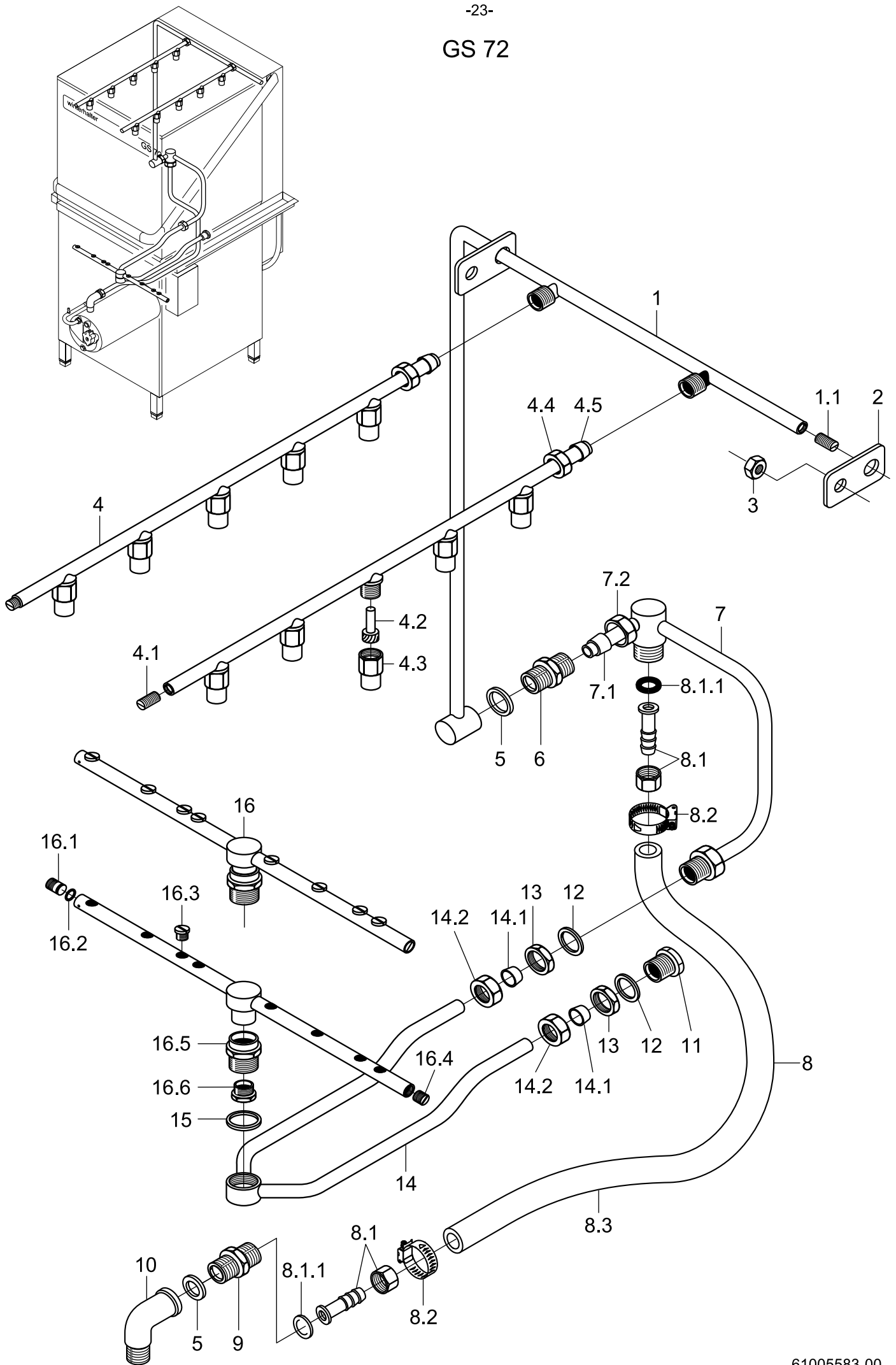
GS 72



GS 72



GS 72

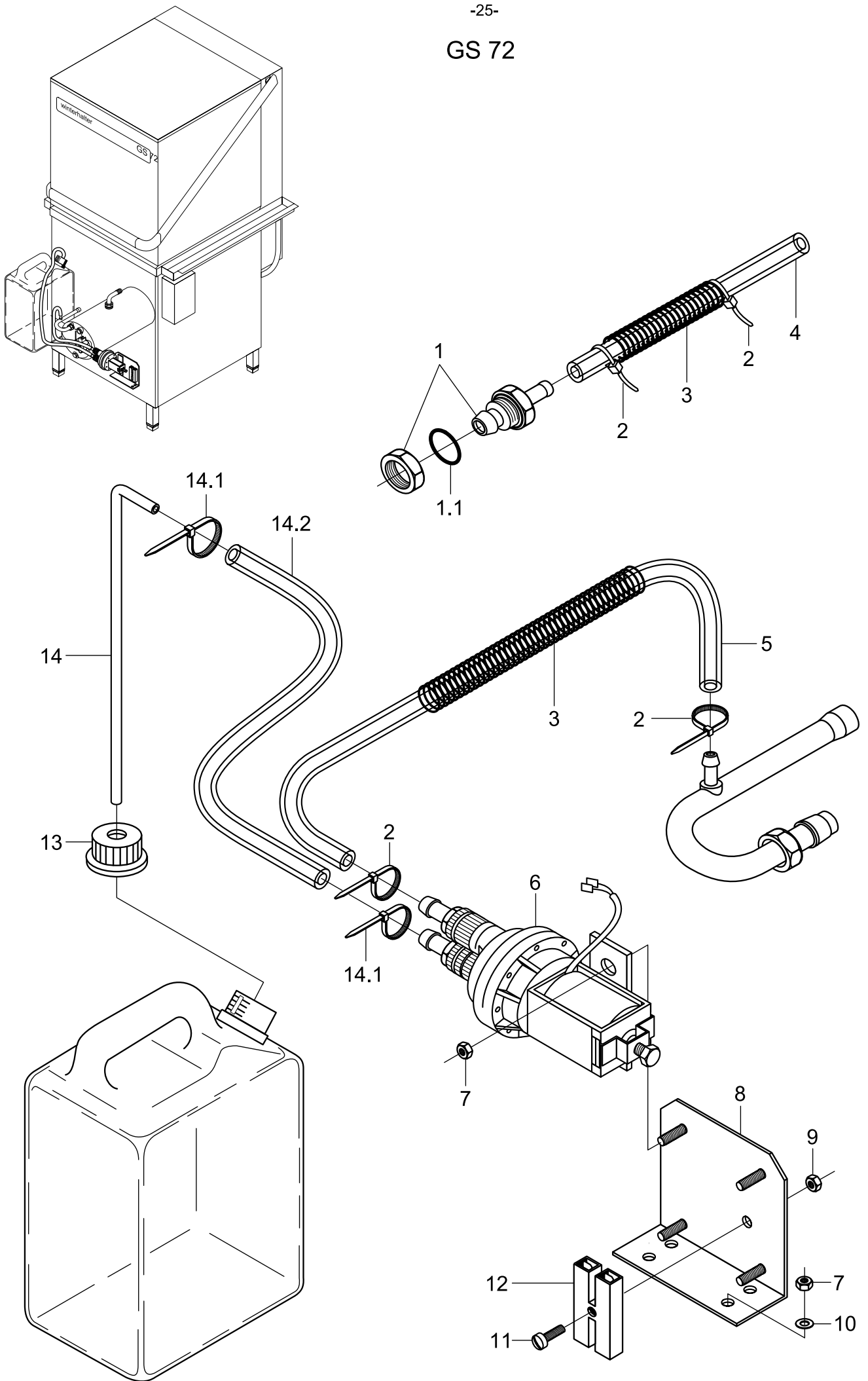


GS 72

Rinsing IV

Item	Designation	Part-No.	Pc.	Notes
1	Rinse manifold; internal	61002467		incl. item 1.1
1.1	Grub screw; M 11 x 1.0 x 20	20 30 503		
2	Pipe tab	61002465		
3	Hex nut; M 5	21 01 303		
4	Rinse pipe cpl.	61002301	2	incl. items 4.1 - 4.5
4.1	Grub screw; M 9 x 15	20 30 504	2	
4.2	Nozzle swirl device; \varnothing 8 x 18.8	65002764	10	
4.3	Nozzle cap; \varnothing 14.6 x 21	65002765	10	
4.4	Cap nut; G 3/8" x \varnothing 10.2	29 07 200	2	
4.5	Clamping ring; \varnothing 10.2	29 07 500	2	
5	Seal; \varnothing 21 x \varnothing 28 x 2.0	27 09 011		
6	Union stem; G 1/2" x 38; width A/F 27	30 11 301		
7	Rinse manifold; external cpl.	61002285		incl. items 7.1, 7.2
7.1	Cutting ring; \varnothing 15 x 10; nom. dia. 12	29 07 300		without glass washing kit
7.2	Cap nut; G 1/2" x \varnothing 12.2; width across flats 24	29 07 201		
8	Set rinse connection	61005650		incl. items 8.1 - 8.3
8.1	Hose stem	60002453	2	incl. items 8.1.1
8.1.1	Seal; \varnothing 14 x \varnothing 23.5 x 2.0	27 01 028		
8.2	Hose clip; \varnothing 14 - 24 x 9	28 02 108	2	
8.3	Hose; nom. dia. 13.5 x 3.5 x 900	40 02 029		per metre
9	Reducing nipple, G 1/2" x G 3/4"; width AF 27	61003430		pressurized boiler
10	Angle; G 1/2"	30 02 301		
11	Nipple; G 3/8"	61002295		
12	Seal; \varnothing 17 x \varnothing 24 x 2.0	27 09 009		
13	Hex nut; G 3/8" x 5.5	30 09 200		
14	Revolving arm support cpl.	61003400		incl. items 14.1, 14.2
14.1	Clamping ring; \varnothing 10.2	29 07 500	2	
14.2	Cap nut; G 3/8" x \varnothing 10.2	29 07 200	2	
15	Seal; \varnothing 27 x \varnothing 34 x 2.0	27 09 025		
16	Revolving arm cpl.	55 10 091		incl. items 16.1 - 16.6
16.1	Grub screw; M 11 x 0,75 x 14	29 10 240		
16.2	O-ring; 7 x 1.5	27 07 014		
16.3	Flat jet nozzle	29 10 312	8	
16.4	Grub screw; M 11 x 1.0 x 8	29 10 239		
16.5	Revolving arm bush; G 3/4" x 24.5	35 01 161		
16.6	Revolving arm screw; M 14 x 1	20 19 204		

GS 72

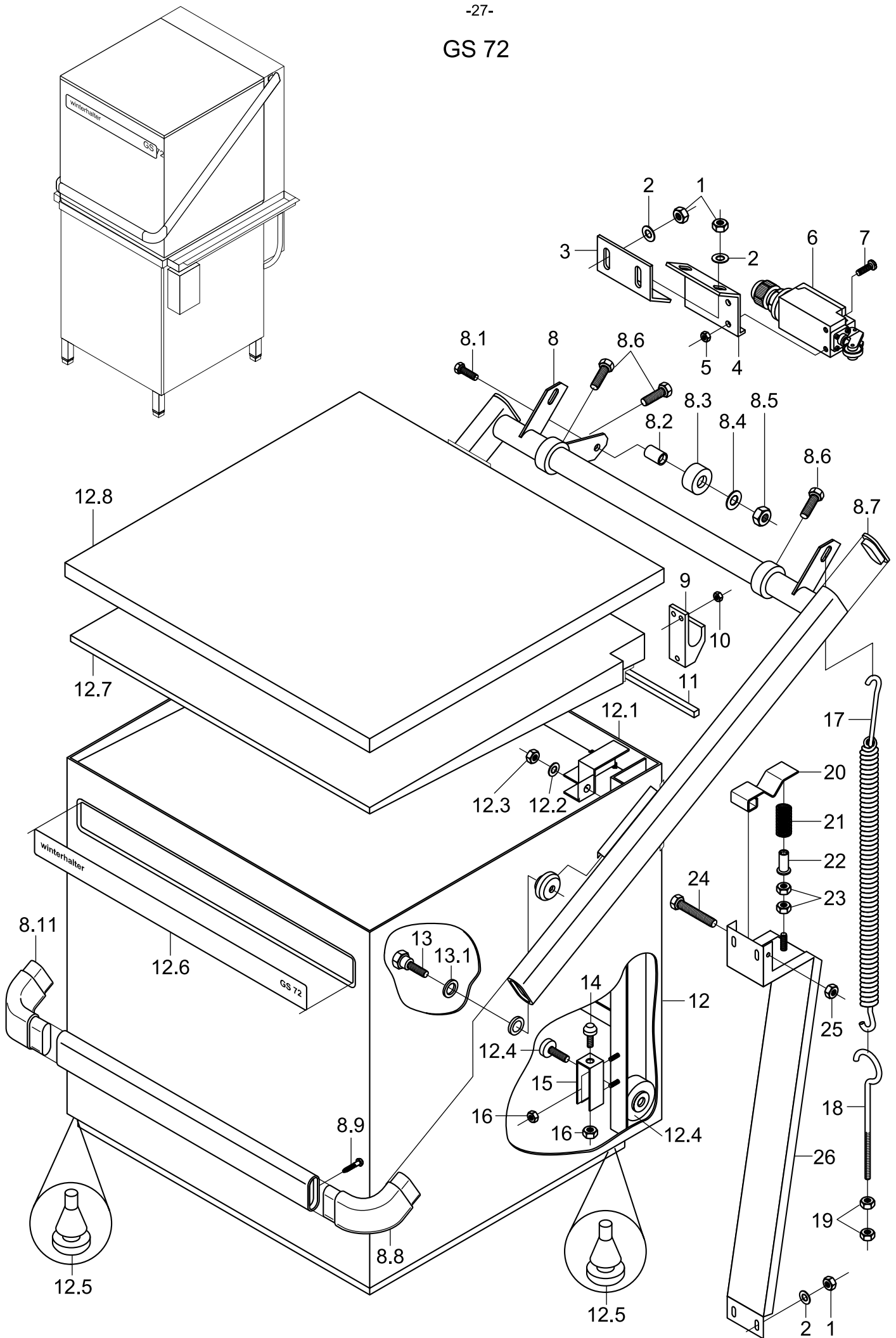


GS 72

Dosing

Item	Designation	Part-No.	Pc.	Notes
1	Inlet; detergent	55 25 040		incl. item 1.1
1.1	O-ring; 16 x 2.5	27 07 001		
2	Wire hose clamp; D8,6 x 1	28 02 348		
3	Spring; \varnothing 0.8 x \varnothing 10 x 280	62002419		
4	Hose; nom. dia. 5 x 1.5 x 2000	40 01 024		per metre
5	Hose; nom. dia. 5 x 1.5 x 360	40 01 024		per metre
6	ELT 10 replacement set	55 28 278		
7	Hex nut; M 5 self-locking	21 05 302		
8	Dispenser holder	61004653		
9	Hex nut; M 3	21 01 301		
10	Washer; \varnothing 3.2 x \varnothing 6.0 x 0.5	22 02 201		
11	Cylinder-head screw; M 3 x 16	20 09 205		
12	Coupling piece; insulated	31 12 021		
13	Sealing cap	35 02 023		drill if necessary
14	Suction stick, cpl.	55 25 051		incl. item 14.1, 14.2
14.1	Wire hose clamp; D8,6 x 1	28 02 348		
14.2	Hose; nom. dia. 5 x 1.5 x 2500	40 01 024		per metre

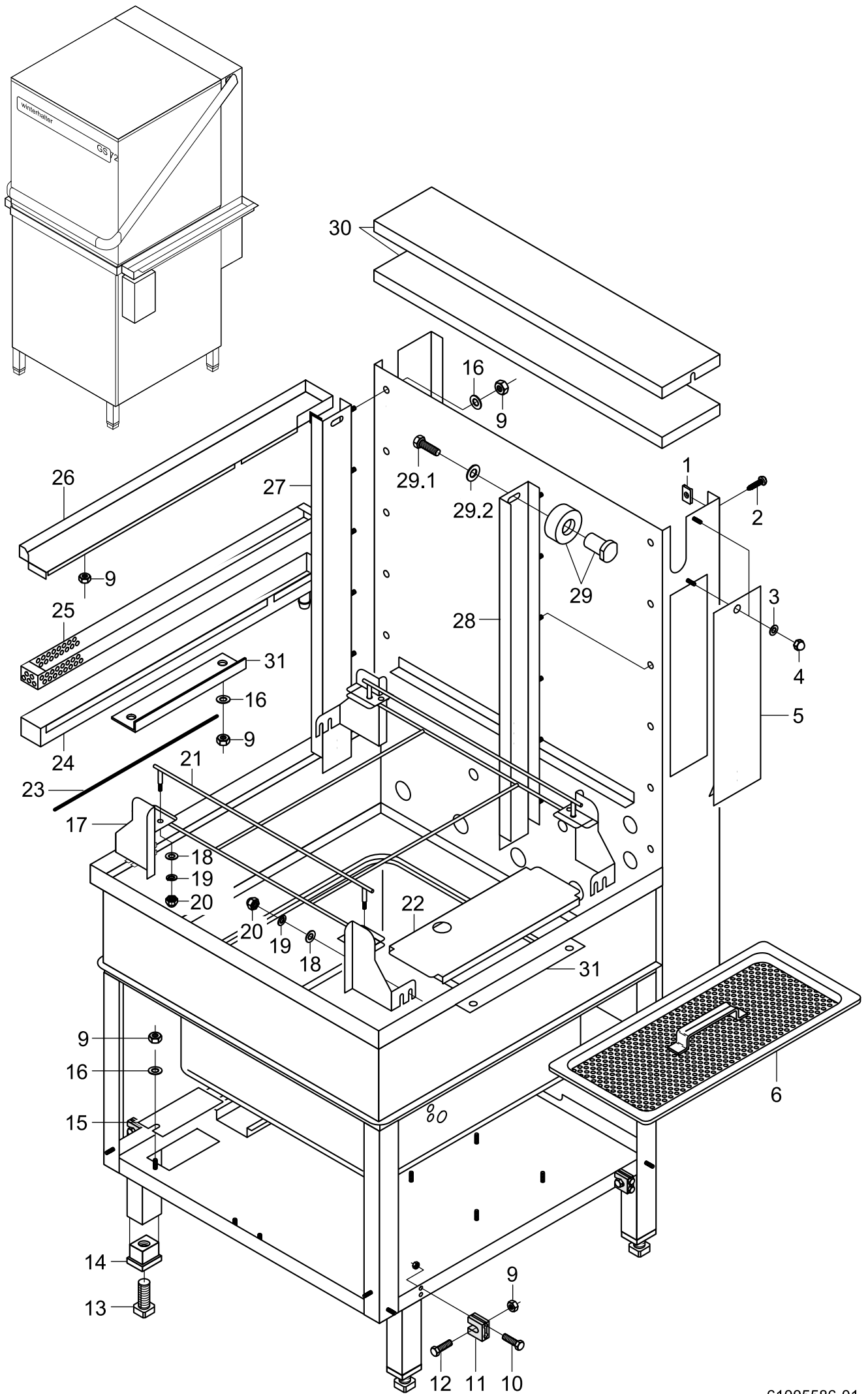
GS 72



GS 72

Hood and hood guide

Item	Designation	Part-No.	Pc.	Notes
1	Hex nut; M 5	21 01 303		
2	Washer; \varnothing 5.3 x \varnothing 10.0 x 1.0	22 01 300		
3	Limit switch plate	61002946		
4	Limit switch bracket	61002949		
5	Hex nut; M 4	21 01 302		
6	Limit switch	80003235		
7	Pan-head screw, M 4 x 25	20 10 215		
8	Door lever cpl.	61002318		incl. item 8.1 - 8.11
8.1	Hex-head screw; M 8 x 30	20 01 304		
8.2	Brake bush	61002602		
8.3	Brake roller; \varnothing 30 x 15	61002601		
8.4	Washer; \varnothing 8.4 x \varnothing 17 x 1.6	22 01 303		
8.5	Hex nut; M 8 self-locking	21 05 306		
8.6	Hex-head screw; M 8 x 20	20 01 312	3	
8.7	Cap; 15 x 17 x 45	35 03 027	2	
8.8	Connecting corner; right	61003361		
8.9	PT screw; KA 40 x 12	20 17 302	2	
8.10	Oval profile section; 17 x 45 x 1.2 x 664	61002340		
8.11	Connecting corner; left	61003362		
9	Door lever bearing	61002464	2	
10	Hex nut; M 6	21 01 304		
11	Adhesive tape; 12 X 10000	48 03 015		1 roll = 10 metres
12	Hood cpl.	55 20 030		incl. items 12.1 - 12.8
12.1	Hood cover; right	61002801		
n.p.	Hood cover; left	61002802		
12.2	Washer; \varnothing 5.3 x \varnothing 10.0 x 1.0	22 01 300		
12.3	Hex nut; M 5	21 01 303		
12.4	Set hood roll	61005649		For both sides
12.5	Frame buffer	40 06 016	4	
12.6	Machine nameplate	61002460		
12.7	Polystyrene wedge	61002622		
12.8	Hood cover plate	61002621		
13	Set door lever rolls	61005653		incl. items 13.1; for both sides
13.1	Seal; \varnothing 13.3 x \varnothing 18 x 2.0	27 09 012	2	
14	Rubber buffer	40 06 004	2	
15	Buffer bracket	61002380	2	
16	Hex nut; M 6 self-locking	21 05 304		
17	Tension spring	61002022	2	
18	Eye bolt; M 10 x 110	61002816	2	
19	Hex nut M10	21 01 306	4	
20	Notch lever	61002473		
21	Pressure spring; hood brake	61002599		
22	Locating device for spring	61002628		
23	Hex nut; M 8	21 01 305	2	
24	Hex-head screw; M 8 x 60	20 01 351		
25	Hex nut; M 8 self-locking	21 05 306		
26	Brake bracket	61002600		

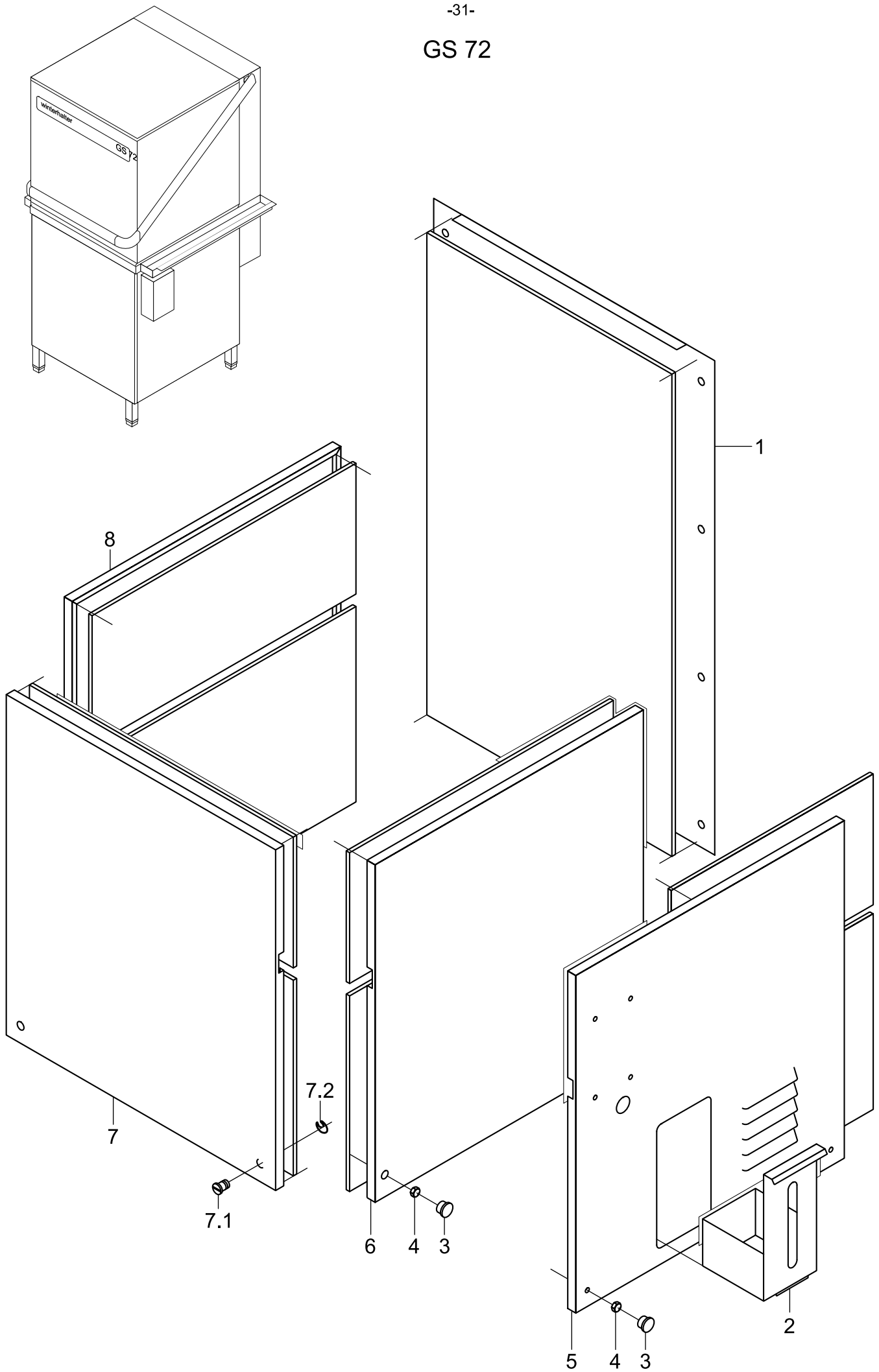


GS 72

Container, rack guide and Channel

Item	Designation	Part-No.	Pc.	Notes
1	Sheet-metal nut; B 3.9	21 17 300		
2	Sheet-metal screw, B 3.9 x 16	20 20 300		
3	Washer; \varnothing 4.3 x \varnothing 8 x 0.5	22 02 202		
4	Cap nut; M4	21 10 302		
5	Flap for Mediamat	61002215		
6	Surface strainer	61002537	2	
7	Fixing bracket	61002960	2	Channel
8	Hex nut; M 4	21 05 201		
9	Hex nut; M 5 self-locking	21 05 302		
10	Pan-head screw; M 4 x 30	20 10 316		
11	Strut retainer	35 01 068	4	
12	Pan-head screw; M 5 x 20	20 10 325		
13	Foot cleat; G 3/4"; 32 x 32 x 100	35 01 064	4	
14	Threaded insert; G 3/4"; 42 x 62 x 50	35 01 063	4	
15	Cover plate	61002611		
16	Washer; \varnothing 5.3 x \varnothing 10 x 1.0	22 01 313		
17	Rack support cpl.	61002350		GS 72 Eck too
18	Washer; \varnothing 6.4 x \varnothing 18 x 1.6	22 05 302		
19	Lock washer; B 6	23 03 300		
20	Hex nut; M 6	21 01 304		
21	Guide rod	80000185	2	
22	Surface strainer seat	61002264		
23	Round cord; \varnothing 2.0 x 767	40 04 005	2	per metre
24	Water channel; left	61002867		table depth 800; GS 72 Eck too
	Water channel; right	61002866		table depth 800
	Water channel; left; 35 x 671	61002868		table depth 700; GS 72 Eck
	Dirt trap channel; left; 60 x 771	61002664		table depth 800
	Dirt trap channel; right; 60 x 771	61002665		table depth 800
	Dirt trap channel; left; 60 x 671	61002719		table depth 700; GS 72 Eck
25	Strainer insert; 28 x 761	61004552		table depth 800
	Strainer insert; 28 x 661	61004416		table depth 700
	Dirt trap; 28 x 761	61002668		table depth 800
	Dirt trap; 54 x 661	61002710		table depth 700
26	Wall end section; 55 x 837	61002754		table depth 700
	Wall end section; 155 x 837	61002753		table depth 800
	Wall end piece; right; width 48mm	61004475		table depth 700; control box left
	Wall end piece; right; width 148mm	61004476		table depth 700; control box left
27	Housing guide; left	61002218		
28	Housing guide; right	61002217		
29	Set hood roll	61005649		incl. items 29.1, 29.2 for both sides
29.1	Hex-head screw; M 6 x 16	20 01 306		
29.2	Washer; \varnothing 6.4 x \varnothing 12.5 x 1.6	22 01 302		
30	Rear panel cover	61002425		
31	Support	61002960		

GS 72



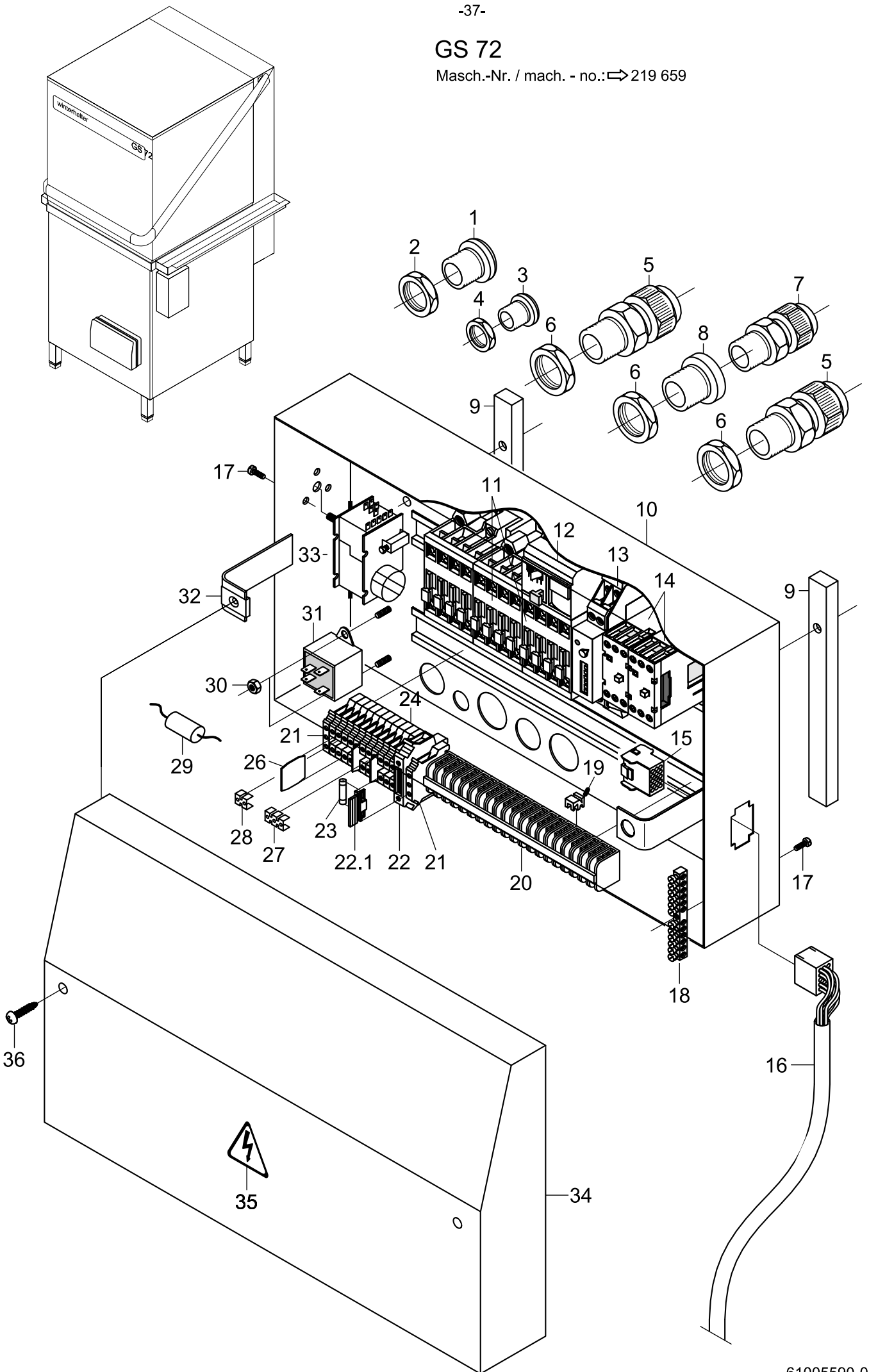
GS 72

Electrical parts I

Item	Designation	Part-No.	Pc.	Notes
1	Hex nut; M 5 self-locking	21 05 302		
2	Washer; \varnothing 5.3 x \varnothing 10 x 1.0	22 01 300		
3	Switch housing	61002698		
4	Sheet-metal nut; B 3.9	21 17 300		
5	Nozzle; 9,0 X D36; D20	61006576		
6	Stuffing box for thermometer	32 01 030		
7	Seal; \varnothing 14.2 x \varnothing 20 x 2.0	27 09 036		
8	Hex nut; M 14 x 1 x 5	31 25 002		
9	Thermometer; 58°C; measuring lead length 2000	32 01 035		Tank; up to mach.-no.: 392 021
9.1	Thermometer seal	32 01 039		
10	Thermometer; 85°C; measuring lead length 2000	32 01 036		Boiler; up to mach.-Nr.: 392 021
10.1	Thermometer seal	32 01 039		
11	Lamp; white; 230V	31 08 064		Programme cycle
12	Push-button; white; 250V	31 24 129		Manual rinsing
13	Push-button, white	31 24 128		Manual washing
14	Push-button; white; 250V	31 24 166		Programme II
15	Push-button; white; 250V	31 24 165		Programme I
16	Push-button switch; "W" green 250 V	31 24 185		On-Off
17	Sheet-metal screw, B 3.9 x 16	20 20 300		
18	Switch cover	61002700		up to mach.-no.: 392 021
	Switch cover; 7-hole	61005654		from mach.-no.: 392 022

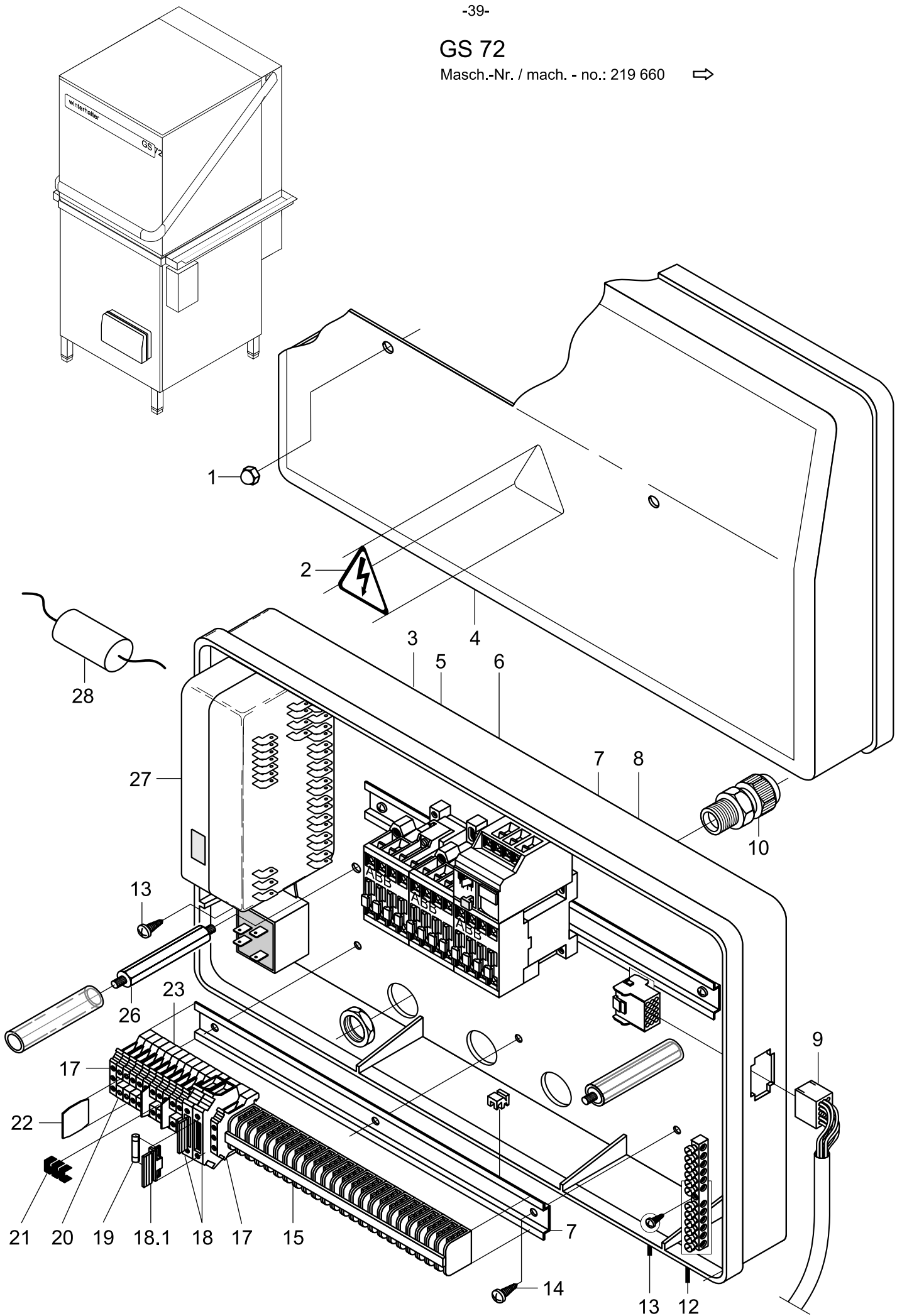
GS 72

Masch.-Nr. / mach. - no.: ⇨ 219 659



GS 72

Masch.-Nr. / mach. - no.: 219 660 →



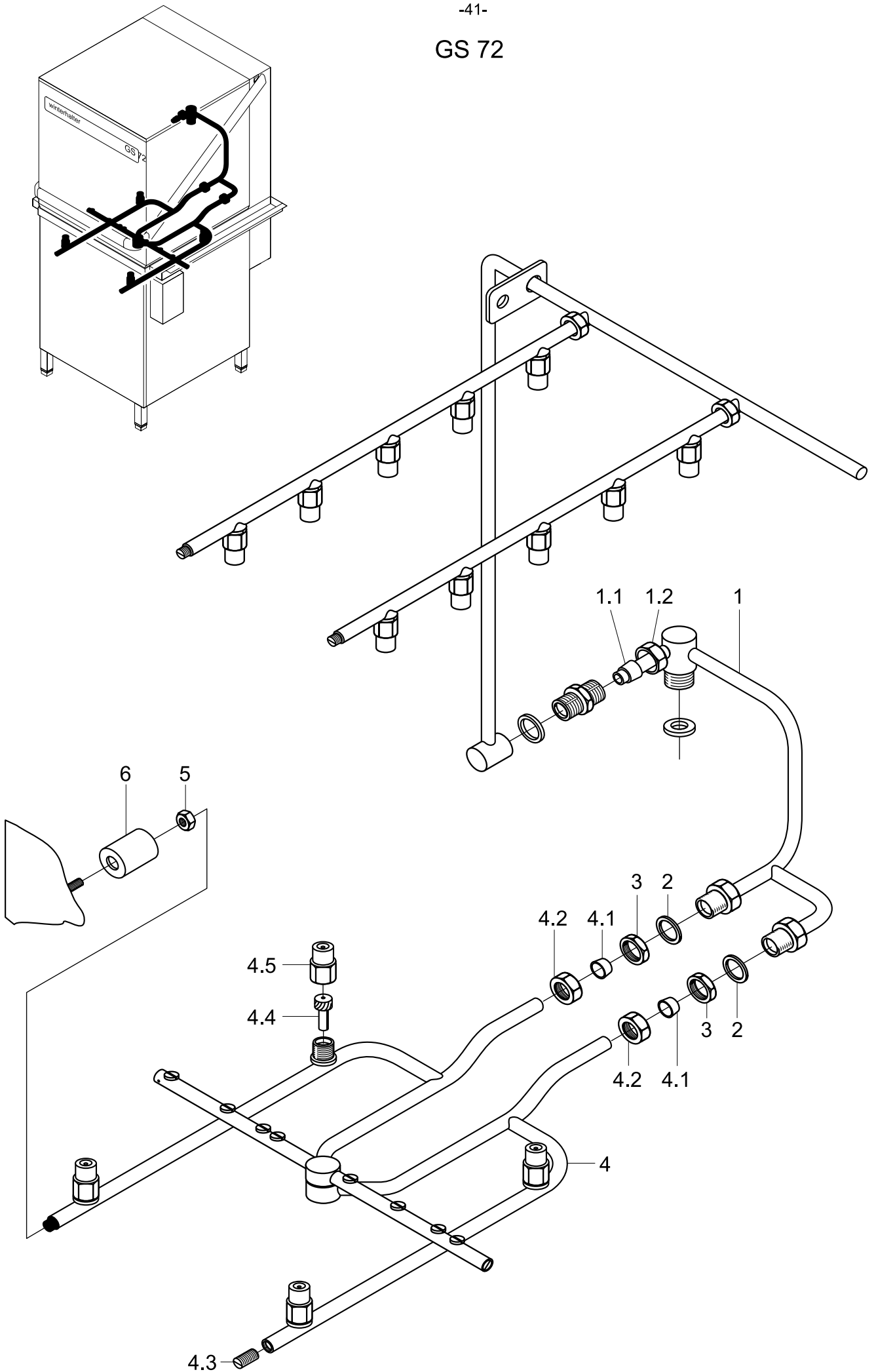
GS 72

Electrical parts III

Machine-No: 219 660 ⇒

Item	Designation	Part-No.	Pc.	Notes
1	Cap nut	21 10 204		
2	Sign; high-voltage flash	28 03 009		
3	Bottom part of relay box	61002617		
4	Switch box cover	61002408		
5	Contacteur; A9; 220-255V; 50/60Hz	31 04 161		arrangement can vary by heating power
	Contacteur AF16; 100-250V/50-60HZ AC/DC; 7,5KW	30000861		
6	Overcurrent relay electronic; 5.7 - 18.9A	31 04 193		
7	Snap-on rail; 7,5 x 35 x 315	61002397	2	
8	Wire assortment; clutch	61003428		up to mach.-no.: 392 021
	Wire assortment; clutch	61003883		from mach.-no.: 392 022
9	Cable harness; with plug	61003426		up to mach.-no.: 392 021
	Cable harness with connector	61004393		from mach.-no.: 392 022
10	Cable gland PG 21 with strain relief device	31 10 070	3	
11	Hex nut; PG 21	31 10 071	3	
12	Terminal block; PE KLB 12/SEV	31 09 094		
13	PT screw; KB 30 x 14	20 17 002		
14	PT screw; KB 50 x 8	20 17 001		
15	Strip terminal BK 4 - FS/FS	31 09 025	23	
16	Straps	31 09 012	4	
17	Universal terminal; USLKG 10 gn-ye	31 09 059	2	
18	Universal fuse terminal; UK-Si	31 09 063	2	incl. item 18.1
18.1	Fused plug	31 09 072	2	
19	Fine-wire fuse; 250V; 6.3A	31 11 043	4	incl. 2 pc. reserve
20	Universal terminal; UK 10 blue	31 09 058	2	
21	Fixed bridge; 3-pin; FB 10-8	31 09 138	3	
	Fixed bridge; 2-pin; FB 10-8	31 09 128		
22	Isolating disk TS-K	31 09 066	3	
23	Universal terminal; grey UK 10	31 09 057	9	
n.p.	Universal terminal; grey UK 35	31 09 172		Japan
24	Radio interf. suppr. capacitor; 3 x (0.47 μ F + 1M Ω)	31 13 072		with Y-voltage
26	Stud; M 6; width across flats 10 x 126	61003313	2	
n.p.	Hex nut; M 6 self-locking	21 05 304		
27	Electr. Programme switch; EPS 1.1; 230V	31 05 131		
	Electr. Programme switch; EPS 1.1; 200V; 240V	31 05 132		
28	RC element; 0.27 μ F; 250V	60000990		
n.p.	Zuleitungskabel			on request
n.p.	Cable harness; three-phase current	61002150		up to mach.-no.: 392 021
n.p.	Cable harness; three-phase current	61003884		from mach.-no.: 392 022
n.p.	Cable harness; control	61003427		up to mach.-no.: 392 021
n.p.	Cable harness; control	61003885		from mach.-no.: 392 022
n.p.	Wire assortment; cpl. GS 72	61002154		
n.p.	Wire assortment; control	61003429		up to mach.-no.: 392 021
n.p.	Wire assortment; control	61004468		from mach.-no.: 392 022
n.p.	Wire assortment; EZEO	61004122		up to mach.-no.: 392 021
n.p.	Wire assortment; EZEO	61004118		from mach.-no.: 392 022

GS 72



GS 72

Glass washing kit (option)

Item	Designation	Part-No.	Pc.	Notes
1	Rinse manifold; external cpl.	80001900		incl. items 1.1, 1.2
1.1	Cutting ring; \varnothing 15 x 10; nom. dia. 12	29 07 300		
1.2	Cap nut; G 1/2" x \varnothing 12.2; width across flats 24	29 07 201		
2	Seal; \varnothing 17 x \varnothing 24 x 2.0	27 09 009	2	
3	Hex nut; G 3/8" x 5.5	30 09 200	2	
4	Rinse system; bottom cpl.	61005572		incl. items 4.1 - 4.5
4.1	Clamping ring; \varnothing 10.2	29 07 500	2	
4.2	Cap nut; G 3/8" x \varnothing 10.2	29 07 200	2	
4.3	Grub screw; M 9 x 15	20 30 504	2	
4.4	Nozzle swirl device; \varnothing 8 x 18.8	65002764	4	
4.5	Nozzle cap; \varnothing 14.6 x 21	65002765	4	
5	Hex nut; M 4 self-locking	21 05 300		
6	Bush; \varnothing 28 x 30	61002343	2	