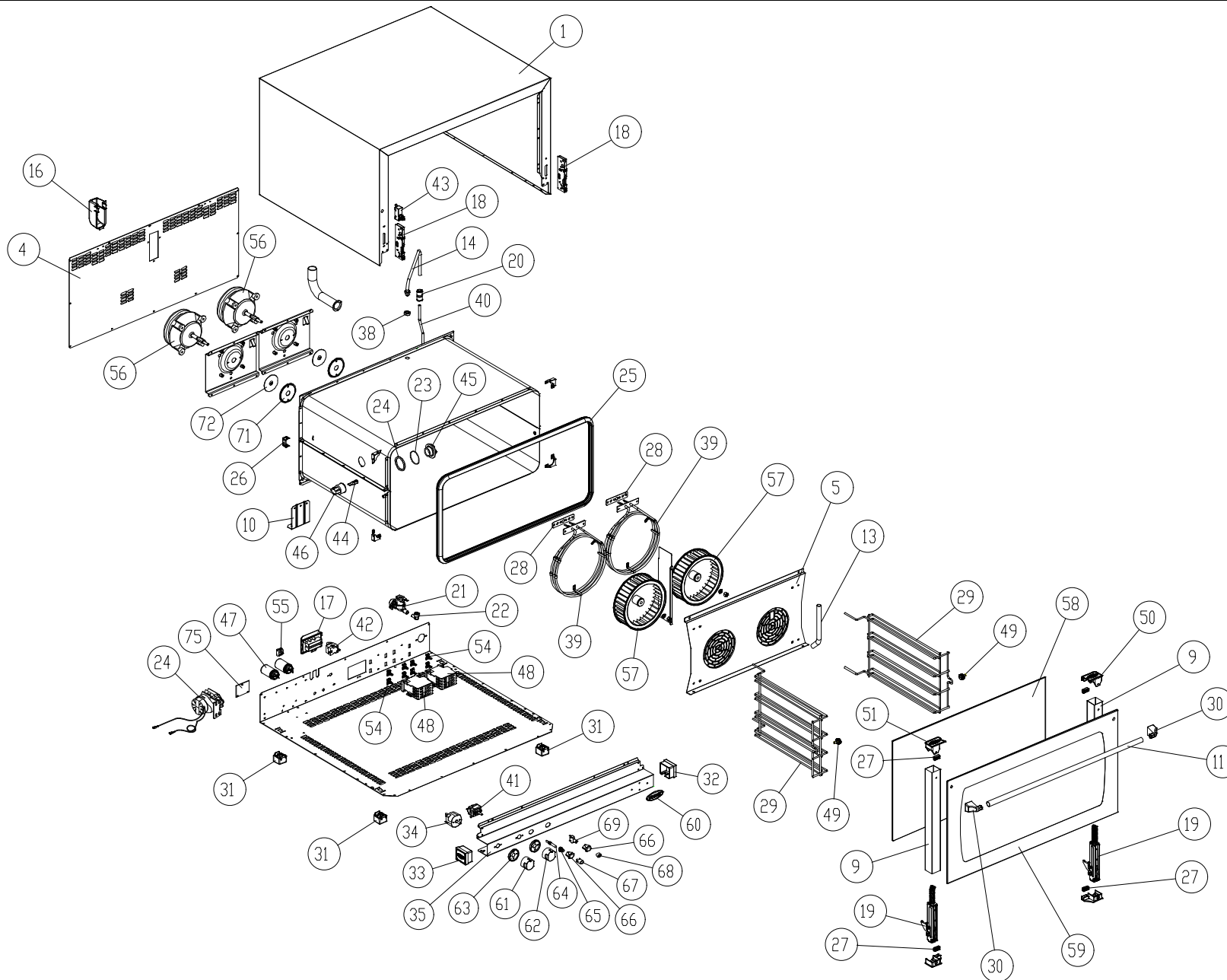


MOD: XF193

EXPLODED VIEW DISEGNO ESPLOSO



LEGEND - LEGENDA

1	OD1285CO	56	VN1000B0
4	OF1095A1	57	VN1025A2
5	OG1125B1	58	VT1070B0
9	OH1425B0	59	VT1071A2
10	OH1455A1	60	ED1070A0
11	OH1930A0	61	MN1090B0
13	OH1975B0	62	MN1091A0
14	OH1990A1	63	MN1095A0
15	OH2015A1	64	VE177
16	VM1065A0	65	VE162
17	CE1130A1	66	VE1170A0
18	CR1000A0	67	VE164
19	CR1050A1	68	VE175
20	EL1055A0	69	VE169
21	EL1085A0	72	OH3020A0
22	EL1195A0	72	GN1140A0
23	GN1055A0	75	TM1000A0
24	GN1065A1		
24	VN032		
25	GN1110A2		
26	OH318A		
27	GN1265A0		
28	GN224		
29	GRL1025A0		
30	MG1015A0		
31	PD1001A0		
32	VM1115A0		
33	VM1116A0		
34	TM1005A0		
35	OD1425CO		
38	RC1170A1		
39	RS1090A1		
40	TB008		
41	TR006		
42	TR255B		
43	VE1295A0		
44	VE1005A1		
45	VE1010A1		
46	VE1015A1		
47	VE221		
48	VE1095A0		
49	V11035A1		
50	VM1045B0		
51	VM1046B0		
54	VM1075A1		
55	VM250		

MOD: XF193

EXPLODED VIEW DISEGNO ESPLOSO



DESCRIZIONE CODICI

1	OD1285C0	MANTELLO INOX L.M. ROSSELLA
4	OF1095A1	SCHIENA ZINCATA L.M. ROSSELLA
5	OG1125B1	CARTER ARIA INOX L.M. ROSSELLA
9	OH1425B0	COLONNINA SX/DX PORTA L.M. ARIANNA-ROSSELLA
10	OH1455A1	STAFFA SOSTEGNO MUFFOLA L.M.
11	OH1930A0	TUBO MANIGLIA D-est=18 Sp=1 L=718 INOX L.M. 800
13	OH1975B0	TUBO INTERNO UMIDITA D=16 SP=1 INOX L.M. ROSSELLA
14	OH1990A1	TUBO ESTERNO UMIDITA + RACCORDO INOX SALDATO LM
15	OH2015A1	PROFILO SOSTEGNO MOTORE XV203G/403G L.M.
16	VM1065A0	CUFFIA COPRI CAMINO FUMI L.M.
17	CE1130A1	CAVO 5X1,5MMQ H07RN-F L=1,5M + MORS.K1/6
18	CR1000A0	ATTACCO CERNIERA PORTA FORNO RIBALTA L.M.
19	CR1050A1	CERNIERA PORTA FORNO RIBALTA XVCI04-LM ROSSELLA
20	EL1055A0	RIDUZIONE J.G. DA D=10 A D=8 PM201008E
21	EL1085A0	ELETR.SING. ATT. J.GUEST INCORPORATO CON RID.MARR.TARA
22	EL1195A0	RACCORDO A GOMITO CON J.GUEST CODOLO D8 - D8
23	GN1055A0	OR 46x2 VMQ 70 ROSSO
24	GN1065A1	GUARNIZIONE PORTALAMPADA DE=53.2 DI=44.2 SP=3.2 PTFE P
24	VN032	INVERTITORE P19.5J.02.H6.17 -0198
25	GN1110A2	GUARNIZIONE PORTA PROFILO 248 LINEMISS-XCH030
26	OH318A	SOSTEGNO BULBO STANDARD '02
27	GN1265A0	GUARNIZIONE VETRO INTERNO XVCO54/104
28	GN224	GUARN.PTFE+CARB 100x22x0,8sp-c/fori 1999
29	GRL1025A0	GRIGLIA LATERALE DX/SX CROMATA 4TG 600x400 L.M. ROSSELL
30	MG1015A0	TERMINALE MANIGLIA L.M.
31	PD1001A0	PIEDINO 35X35 H26 PLASTICA+GOMMA GRIGIO
32	VM1115A0	TAPPO DX CRUSCOTTO COMANDI IN PLASTICA L.M. MANUAL
33	VM1116A0	TAPPO SX CRUSCOTTO COMANDI IN PLASTICA L.M. MANUAL
34	TM1005A0	TIMER MI2 60 MIN 250V 16A
35	OD1425C0	CRUSCOTTO COMANDI MANUALE INOX L.M. 800
38	RC1170A1	DADO M14 H=8 CH=22 INOX
39	RS1090A1	RESISTENZA CIRCOLARE D=230 3 SPIRE H78 2900W 230V
40	TB008	TUBO PE 7,93x4,75 TRASPARENTE
41	TRO06	TERMOSTATO 50-295°C 55.19052.861
42	TR255B	TERMOSTATO SIC.+UNIPOL.330°C Ty95H L=1300mm
43	VE1295A0	MICROINTERRUTTORE PORTA MK 16A 230V UL
44	VE1005A1	LAMPADA ALOGENA 40W 230V
45	VE1010A1	VETRO COPRILAMPADA TEMPERATO ANTISHOCK
46	VE1015A1	PORTA LAMPADA SERIE 2 PER LAMPADA ALOGENA
47	VE221	CONDENSICAR PRL 5uF 450V FASTON
48	VE1095A0	TELERUTTORE GE 25A 230V 50/60 Hz CL01A400T6
49	VI1035A1	NOTTOLINO M6x12,5 CON TAGLIO OTT.CROM.FERMA GRIGIE X
50	VM1045B0	TAPPO SUP. DX COLONNINA PORTA VETRO INTERNO L.M.
51	VM1046B0	TAPPO SUP. SX COLONNINA PORTA VETRO INTERNO L.M.
54	VM1075A1	CLIP DI FISSAGGIO PER TELERUTTORI
55	VM250	MORSETT.A PETTINE

56	VN1000B0	MOTORE COND.5uF 200W ALB.M8 CONN.5 POLI
57	VN1025A2	VENTOLA D=196 H=61 38 PALE INOX DADO M8
58	VT1070B0	VETRO INTERNO 715X415X6 BETFL L.M. ROSSELLA
59	VT1071A2	VETRO ESTERNO SER. GIALLO 798X424X5 TFL L.M. ROSSELLA
60	ED1070A0	ETICHETTA UNOX ELLISSE 78x33 ARGENTO CON BORDO EST.
61	MN1090B0	MANOPOLA SERIGR. TIMER 0-60 MIN NICHELATA SATINATA
62	MN1091A0	MANOPOLA SERIGR. TERMOSTATO 80-300°C NICHELATA SATIN
63	MN1095A0	GHIERA CON INDICE STAMPATO NECHELATA SATINATA L.M. MA
64	VE177	LUCE SPIA FLUORO STD 230V
65	VE162	SUPPORTO LAMPADA INTERNO
66	VE1170A0	SUPPORTO D16 ELLITTICO NICHEL OPACO
67	VE164	GEMMA VERDE TERMOMETRO ORO
68	VE175	TASTO ARGENTO OPACO NUVOLETTA ORO
69	VE169	PULSANTE UNIPOLARE NA
72	OH3020A0	DISCO TENUTA ALBERO MOTORE INOX
72	GN1140A0	GUARNIZIONE PORTAMOTORE STAMP. ALBERO MOT. D10 XB-X
75	TM1000A0	SUONERIA ELETTRONICA 15 SEC 120 - 230 V

DESCRIPTION

1	OD1285C0	STAINLESS STEEL COVER L.M. ROSSELLA
4	OF1095A1	ZINCED BACK PANEL L.M. ROSSELLA
5	OG1125B1	STAINLESS STEEL FAN GUARD L.M. ROSSELLA
9	OH1425B0	LEFT/RIGHT DOOR COLUMN L.M. ARIANNA-ROSSELLA
10	OH1455A1	
11	OH1930A0	STAINLESS STEEL HANDLE TUBE D-est=18 Sp=1 L=718 L.M. ELENA-
13	OH1975B0	INTERNAL WATER PIPE D=16 Th=1 STAINLESS STEEL L.M. ROSSELLA
14	OH1990A1	EXTERNAL WATER PIPE + STAINLESS STEEL WELDED CONNECTION
15	OH2015A1	MOTOR SUPPORT PROFILE XV203G/403G/L.M.
16	VM1065A0	PLASTIC COVER FOR FUMES CHIMNEY L.M.
17	CE1130A1	
18	CR1000A0	HINGE LATCH L.M.
19	CR1050A1	
20	EL1055A0	J.G. REDUCTION FROM D=10 TO D=8 PM201008E
21	EL1085A0	WATER SINGLE ELECTROVALVE WITH RAPID CONNECTION & WAT
22	EL1195A0	ELBOW UNION WITH J.GUEST TERMINAL D8 - D8
23	GN1055A0	OR 46x2 VMQ 70 RED
24	GN1065A1	SEAL FOR LAMP GLASS COVER (PURE PTFE) DE=53.2 DI=44.2 TH=
24	VN032	REVERS.SWITCH MOTOR P19.5J.02.H6.17
25	GN1110A2	DOOR GASKET PROFILE 248 LINE MISS-XCH030
26	OH318A	STANDARD BULB SUPPORT '02
27	GN1265A0	INTERNAL GLASS SEAL XVCO54/104
28	GN224	PTFE+CARB 100x22x0,8sp-w/holes 1999 GASKET
29	GRL1025A0	RIGHT/LEFT LAT.GRID CHROMIUM-PLATED 4 TRAYS 600x400 L.M
30	MG1015A0	HANDLE END L.M.
31	PD1001A0	FOOT 35X35 H26 GREY PLASTIC+RUBBER
32	VM1115A0	RIGHT PLASTIC LATERAL CAP FOR CONTROL PANEL L.M. MANUAL
33	VM1116A0	LEFT PLASTIC LATERAL CAP FOR CONTROL PANEL L.M. MANUAL
34	TM1005A0	TIMER MI2 60 MIN 250V 16A
35	OD1425C0	
38	RC1170A1	STAINLESS STEEL NUT M14 H=8 CH=22
39	RS1090A1	CIRC.HEAT. ELEMENT D=230 3 TURNS H78 2900W 230V
40	TB008	TRANSPARENT TUBE PE 7,93x4,75
41	TRO06	THERMOSTAT 50-295°C 55.19052.861
42	TR255B	SAFETY THERMOSTAT+UNIPOL. 330°C Ty95H L=1300mm
43	VE1295A0	
44	VE1005A1	HALOGEN LAMP 40W
45	VE1010A1	TEMPERED LIGHT BULB GLASS COVER
46	VE1015A1	LAMP HOLDER SERIE 2 FOR HALOGEN LAMP
47	VE221	ICAR CONDENSER PRL 5uF 450V FASTON
48	VE1095A0	REMOTE CONTROL SWITCH GE 25A 230V 50/60 Hz CL01A400T6
49	VI1035A1	CHROMIUM PLATED BRASS NUT M6x12,5 TO STOP LATERAL SUP
50	VM1045B0	RIGHT UPPER LID FOR COLUMN FOR INTERNAL GLASS L.M.
51	VM1046B0	LEFT UPPER LID FOR COLUMN FOR INTERNAL GLASS L.M.
54	VM1075A1	PLASTIC CLIP TO FIX CONTACTORS
55	VM250	"COMB" TERMINAL BOARD

56	VN1000B0	MOTOR COND.5uF 200W ALB.M8 CONN.5 TERMINALS
57	VN1025A2	FAN D=196 H=61 38 BLADES STAINLESS STEEL NUT M8
58	VT1070B0	INTERNAL GLASS 715x415x6 BTFL L.M. ROSSELLA
59	VT1071A2	
60	ED1070A0	UNOX ELLIPTICAL STICKER 78x33-SILVER WITH EXTERNAL FRAME
61	MN1090B0	
62	MN1091A0	SER. NICKEL PLATED THERMOSTAT KNOB 80-300°C L.M.
63	MN1095A0	
64	VE177	FLUORINE WARNING LIGHT STD 230V
65	VE162	INTERNAL PILOT LAMP SUPPORT
66	VE1170A0	OPAQUE NICKEL ELLIPTICAL SUPPORT D16
67	VE164	GREEN PILOT WITH GOLD THERMOMETER SERIGRAPHY
68	VE175	OPAQUE SILVER KEY WITH GOLD "CLOUD" SERIGRAPHY
69	VE169	UNIPOLAR NA PUSH-BUTTON
72	OH3020A0	STAINLESS STEEL SEALING DISC FOR MOTOR
72	GN1140A0	MOTOR GASKET
75	TM1000A0	ELECTRICAL BUZZER 15 SECS 120 - 230 V