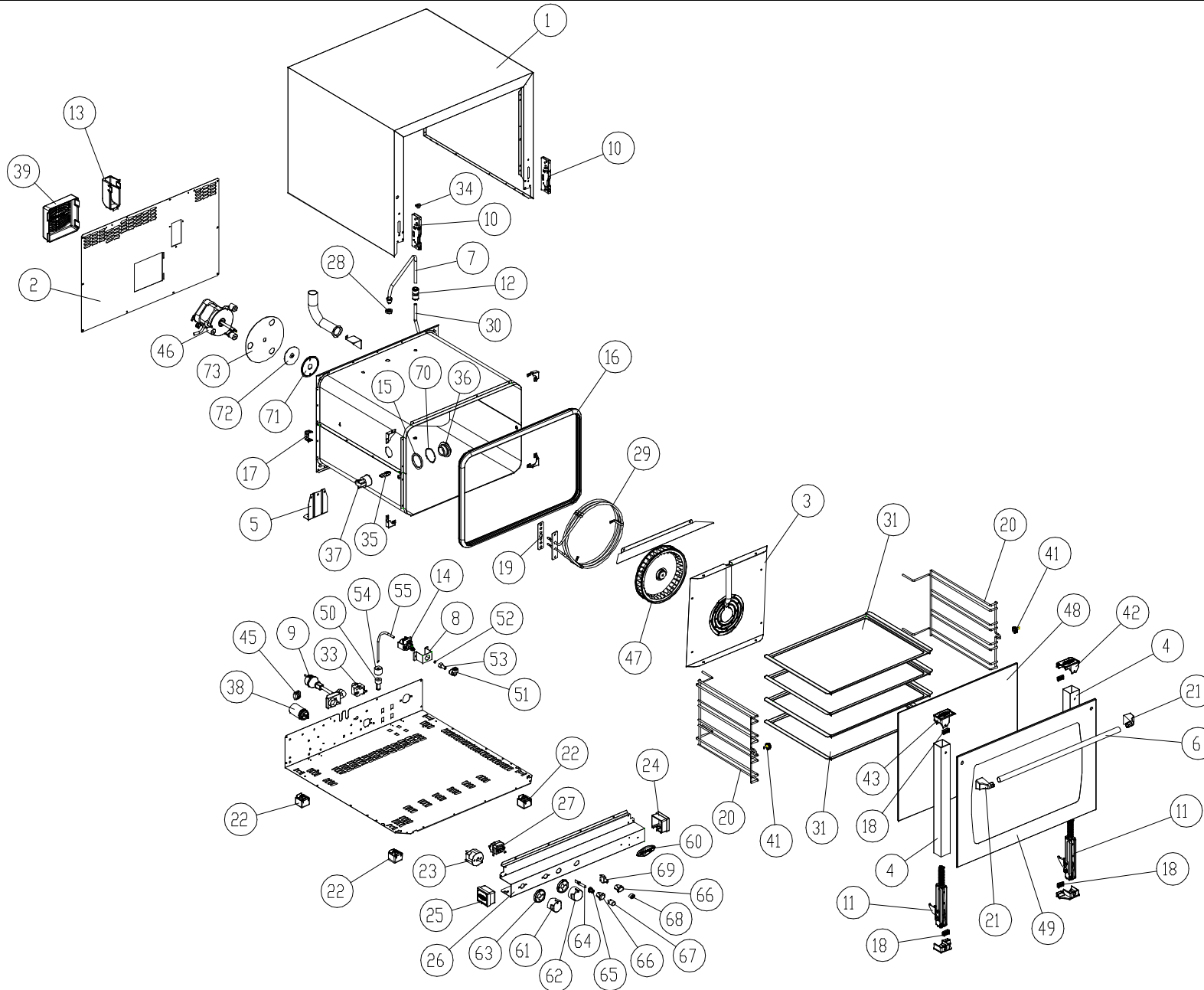


# MOD: XF133

## EXPLODED VIEW DISEGNO ESPLOSO



### LEGEND - LEGENDA

1	OD1275A3	60	ED1070A0
2	OF1085A1	61	MN1090B0
3	OG1112B0	62	MN1091A0
4	OH1425B0	63	MN1095A0
5	OH1455A1	64	VE177
6	OH1925B0	65	VE162
7	OH1990A1	66	VE1170A0
8	OH113	67	VE164
9	CE116	68	VE175
10	CR1000A0	69	VE169
11	CR1015A0	70	GN1055A0
12	EL1055A0	71	OH3020A0
13	VM1065A0	72	GN1135A1
14	ELO70	73	OH3585A0
15	GN1065A1		
16	GN1110A2		
17	OH318A		
18	GN1130A0		
19	GN224		
20	GRL1010A1		
21	MG1015B0		
22	PD1001A0		
23	TM1005A0		
24	VM1115A0		
25	VM1116A0		
26	OD1340B0		
27	TR006		
28	RC1170A1		
29	RS1130A0		
30	TB008		
31	TG305		
33	TR254		
34	VM1025A0		
35	VE1005A2		
35	VE1015A1		
36	VE1010A2		
38	VE1145A0		
39	VE1102A0		
41	VI1035A1		
42	VM1045B0		
43	VM1046B0		
45	VM250		
46	VN1035B0		
47	VN1050A2		
48	VT1060A0		
49	VT1061A2		
50	ELO71		
51	EL1185A0		
52	GN207		
53	RC1180A2		
54	RC493		
55	TB009		

# MOD: XF133

# EXPLODED VIEW DISEGNO ESPLOSO



## DESCRIZIONE CODICI

1	OD1275A3	MANTELLO INOX L.M. ARIANNA
2	OF1085A1	SCHIENA ZINCATA L.M. ARIANNA
3	OG1112B0	CARTER ARIA INOX L.M. ARIANNA MANUAL
4	OH1425B0	COLONNINA SX/DX PORTA L.M. ARIANNA-ROSSELLA
5	OH1455A1	STAFFA SOSTEGNO MUFFOLA L.M.
6	OH1925B0	TUBO MANIGLIA D-EST=18 SP=1 L=518 INOX L.M. 600
7	OH1990A1	TUBO ESTERNO UMIDITA + RACCORDO INOX SALDATO LM
8	OH113	SUPPORTO POMPA EL070
9	CE116	CAVO 3x1,5 H07RN-F MT1,5+K1/3+SCHUK
10	CR1000A0	ATTACCO CERNIERA PORTA FORNO RIBALTA L.M.
11	CR1015A0	CERNIERA PORTA FORNO RIBALTA L.M. ARIANNA
12	EL1055A0	RIDUZIONE J.G. DA D=10 A D=8 PM201008E
13	VM1065A0	CUFFIA COPRI CAMINO FUMI L.M.
14	EL070	POMPA NMEIC+ATT SUP POMPA M10 09.02.060/B
15	GN1065A1	GUARNIZIONE PORTALAMPADA DE=53.2 DI=44.2 SP=3.2 PTFE P
16	GN1110A2	GUARNIZIONE PORTA PROFILO 248 LINE MISS-XCH030
17	OH318A	SOSTEGNO BULBO STANDARD '02
18	GN1130A0	GUARNIZIONE SUPPORTO VETRO L.M. L=23mm
19	GN224	GUARN.PTFE+CARB 100x22x0,8sp-c/fori 1999
20	GRL1010A1	GRIGLIA LATERALE DX/SX CROMATA 4TG 460x330 L.M. ARIANNA
21	MG1015B0	TERMINALE MANIGLIA L.M.
22	PD1001A0	PIEDINO 35X35 H26 PLASTICA+GOMMA GRIGIO
23	TM1005A0	TIMER MI2 60 MIN 250V 16A
24	VM1115A0	TAPPO DX CRUSCOTTO COMANDI IN PLASTICA L.M. MANUAL
25	VM1116A0	TAPPO SX CRUSCOTTO COMANDI IN PLASTICA L.M. MANUAL
26	OD1340B0	CRUSCOTTO COMANDI MANUALE INOX L.M. 600
27	TR006	TERMOSTATO 50-295°C 55.19052.861
28	RC1170A1	DADO M14 H=8 CH=22 INOX
29	RS1130A0	RESISTENZA CIRCOLARE D=230 3 SPIRE H46 2900W 230V
30	TB008	TUBO PE 7,93x4,75 TRASPARENTE
31	TG305	TEGLIA 460x330 PIANA ALLUMINIO
33	TR254	TERM.SIC.BIP.335°C RIARMO MANUALE
34	VM1025A0	TAPPO NYLON PA66 V2 GRIGIO Ø16
35	VE1005A2	LAMPADA HALOPIN ES H66733E5 33W ENERGY SAVER
35	VE1015A1	PORTA LAMPADA SERIE 2 PER LAMPADA ALOGENA
36	VE1010A2	VETRO COPRILAMPADA BOROSILICATO
38	VE1145A0	CONDENSATORE 3,5 µF 450 Vac 50/60 Hz
39	VE1102A0	CUFFIA COPRI MOTORE IN PLASTICA L.M. CRI-STE-ARI
41	VI1035A1	NOTTOLINO M6x12,5 CON TAGLIO OTT.CROM.FERMA GRIGUE X
42	VM1045B0	TAPPO SUP. DX COLONNINA PORTA VETRO INTERNO L.M.
43	VM1046B0	TAPPO SUP. SX COLONNINA PORTA VETRO INTERNO L.M.
45	VM250	MORSETT.A PETTINE
46	VN1035B0	MOTORE SISME 230 VAC LINE MISS
47	VN1050A2	VENTOLA D=196 H=32 38 PALE INOX DADO M6
48	VT1060A0	VETRO INTERNO 515X414X4 BETFL L.M. ARIANNA
49	VT1061A2	VETRO ESTERNO SER. GIALLO 598X424X5 TFL L.M. ARIANNA
50	EL071	FILTRO 009A D=7,75mm
51	EL1185A0	RACCORDO A GOMITO J.GUEST Ø8 - Ø8
52	GN207	O-RING GOMMA NBR70/75SH R=4
53	RC1180A2	RIDUZIONE M10X1 FEMM-Ø8 INOX
54	RC493	AFFONDANTE FILTRO POMPA UMIDIF.
55	TB009	TUBO POLIPROPILENE TRASP. 6x4mm

60	ED1070A0	ETICHETTA UNOX ELLISSE 78x33 ARGENTO CON BORDO EST.
61	MN1090B0	MANOPOLA SERIGR. TIMER 0-60 MIN NICHELATA SATINATA
62	MN1091A0	MANOPOLA SERIGR. TERMOSTATO 80-300°C NICHELATA SATIN
63	MN1095A0	GHIERA CON INDICE STAMPATO NICHELATA SATINATA L.M. MA
64	VE177	LUCE SPIA FLUORO STD 230V
65	VE162	SUPPORTO LAMPADA INTERNO
66	VE170A0	SUPPORTO D16 ELLITTICO NICHEL OPACO
67	VE164	GEMMA VERDE TERMOMETRO ORO
68	VE175	TASTO ARGENTO OPACO NUVOLETTA ORO
69	VE169	PULSANTE UNIPOLARE NA
70	GN1055A0	OR 46x2 VMQ 70 ROSSO
71	OH3020A0	DISCO TENUTA ALBERO MOTORE INOX
72	GN1135A1	GUARNIZIONE PORTAMOTORE STAMP. ALBERO MOT. D8 L.M. C
73	OH3585A0	LAMIERA PROTEZIONE MOTORE ZINCATO L.M.

## DESCRIPTION

1	OD1275A3	STAINLESS STEEL OUTER CASING L.M. ARIANNA
2	OF1085A1	ZINCED BACK PANEL L.M. ARIANNA
3	OG1112B0	
4	OH1425B0	LEFT/RIGHT DOOR COLUMN L.M. ARIANNA-ROSSELLA
5	OH1455A1	
6	OH1925B0	
7	OH1990A1	EXTERNAL WATER PIPE + STAINLESS STEEL WELDED CONNECTION
8	OH113	PUMP EL070 SUPPORT
9	CE116	EL CABLE 3x1.5 H07RN-F MT1,5+K1/3+SCHUKO
10	CR1000A0	HINGE LATCH L.M.
11	CR1015A0	HINGE L.M. ARIANNA
12	EL1055A0	STRAIGHT REDUCTION FROM D=10 TO D=8 J. GUEST
13	VM1065A0	PLASTIC COVER FOR FUMES CHIMNEY L.M.
14	EL070	PUMP NMEIC+ATT SUP PUMP M10 09.02.060/B
15	GN1065A1	SEAL FOR LAMP GLASS COVER (PURE PTFE) DE=53.2 DI=44.2 TH=
16	GN1110A2	DOOR GASKET PROFILE 248 LINE MISS-XCH030
17	OH318A	STANDARD BULB SUPPORT '02
18	GN1130A0	INT. GLASS SEAL L.M. L=23mm
19	GN224	PTFE+CARB 100x22x0,8sp-w/holes 1999 GASKET
20	GRL1010A1	RIGHT/LEFT LATERAL GRID CHROM.PLATED 4 TRAYS 460x330 L.M
21	MG1015B0	HANDLE END L.M.
22	PD1001A0	FOOT 35X35 H26 GREY PLASTIC+RUBBER
23	TM1005A0	TIMER MI2 60 MIN 250V 16A
24	VM1115A0	RIGHT PLASTIC LATERAL CAP FOR CONTROL PANEL L.M. MANUAL
25	VM1116A0	LEFT PLASTIC LATERAL CAP FOR CONTROL PANEL L.M. MANUAL
26	OD1340B0	
27	TR006	TERMOSTAT 50-295°C 55.19052.861
28	RC1170A1	STAINLESS STEEL NUT M14 H=8 CH=22
29	RS1130A0	CIRC. HEAT ELEMENT D=230 3 TURNS H46 2900W 230V
30	TB008	TRANSPARENT TUBE PE 7,93x4,75
31	TG305	TRAY 460x330 FLAT ALUMINIUM
33	TR254	SECURITY THERMOSTAT BIP. 335°C
34	VM1025A0	NYLON LID PA66 V2 GREY Ø16
35	VE1005A2	HALOGEN LAMP 33W ENERGY SAVER
35	VE1015A1	LAMP HOLDER SERIE 2 FOR HALOGEN LAMP
36	VE1010A2	
38	VE1145A0	CONDENSER 3.5 µF 450 Vac 50/60 Hz
39	VE1102A0	PLASTIC COVER FOR MOTOR L.M. CRI-STE-ARI
41	VI1035A1	CHROMIUM PLATED BRASS NUT M6x12,5 TO STOP LATERAL SUP
42	VM1045B0	RIGHT UPPER LID FOR COLUMN FOR INTERNAL GLASS L.M.
43	VM1046B0	LEFT UPPER LID FOR COLUMN FOR INTERNAL GLASS L.M.
45	VM250	"COMB" TERMINAL BOARD
46	VN1035B0	230 VAC MOTOR LINE MISS
47	VN1050A2	FAN D=196 H=32 38 STAINLESS STEEL BLADES NUT M6
48	VT1060A0	INNER GLASS 515x414x4 BETFL L.M. ARIANNA
49	VT1061A2	EXTERNAL YELLOW SER.GLASS 598x424x5 TFL L.M. ARIANNA
50	EL071	FILTER 009A D=7,75mm
51	EL1185A0	ELBOW CONNECTION J. GUEST Ø8 - Ø8
52	GN207	RUBBER O-RING NBR70/75SH R=4
53	RC1180A2	STAINLESS STEEL M10x1 FEMALE REDUCTION Ø8
54	RC493	BALLAST FOR FILTER FOR WATER PUMP
55	TB009	CLEAR POLYPROPYLENE PIPE 6x4mm

60	ED1070A0	UNOX ELLIPTICAL STICKER 78x33-SILVER WITH EXTERNAL FRAME
61	MN1090B0	
62	MN1091A0	SER. NICKEL PLATED THERMOSTAT KNOB 80-300°C L.M.
63	MN1095A0	
64	VE177	FLUORINE WARNING LIGHT STD 230V
65	VE162	INTERNAL PILOT LAMP SUPPORT
66	VE170A0	OPAQUE NICKEL ELLIPTICAL SUPPORT D16
67	VE164	GREEN PILOT WITH GOLD THERMOMETER SERIGRAPHY
68	VE175	OPAQUE SILVER KEY WITH GOLD "CLOUD" SERIGRAPHY
69	VE169	UNIPOLAR NA PUSH BUTTON
70	GN1055A0	OR 46x2 VMQ 70 RED
71	OH3020A0	STAINLESS STEEL SEALING DISC FOR MOTOR
72	GN1135A1	MOTOR SHAFT GASKET L.M. CRI-STEF-ARIA
73	OH3585A0	ZINCATE MOTOR GUARD PLATE L.M.

**MOD: XF133**

**EXPLODED VIEW  
DISEGNO ESPLOSO**

