

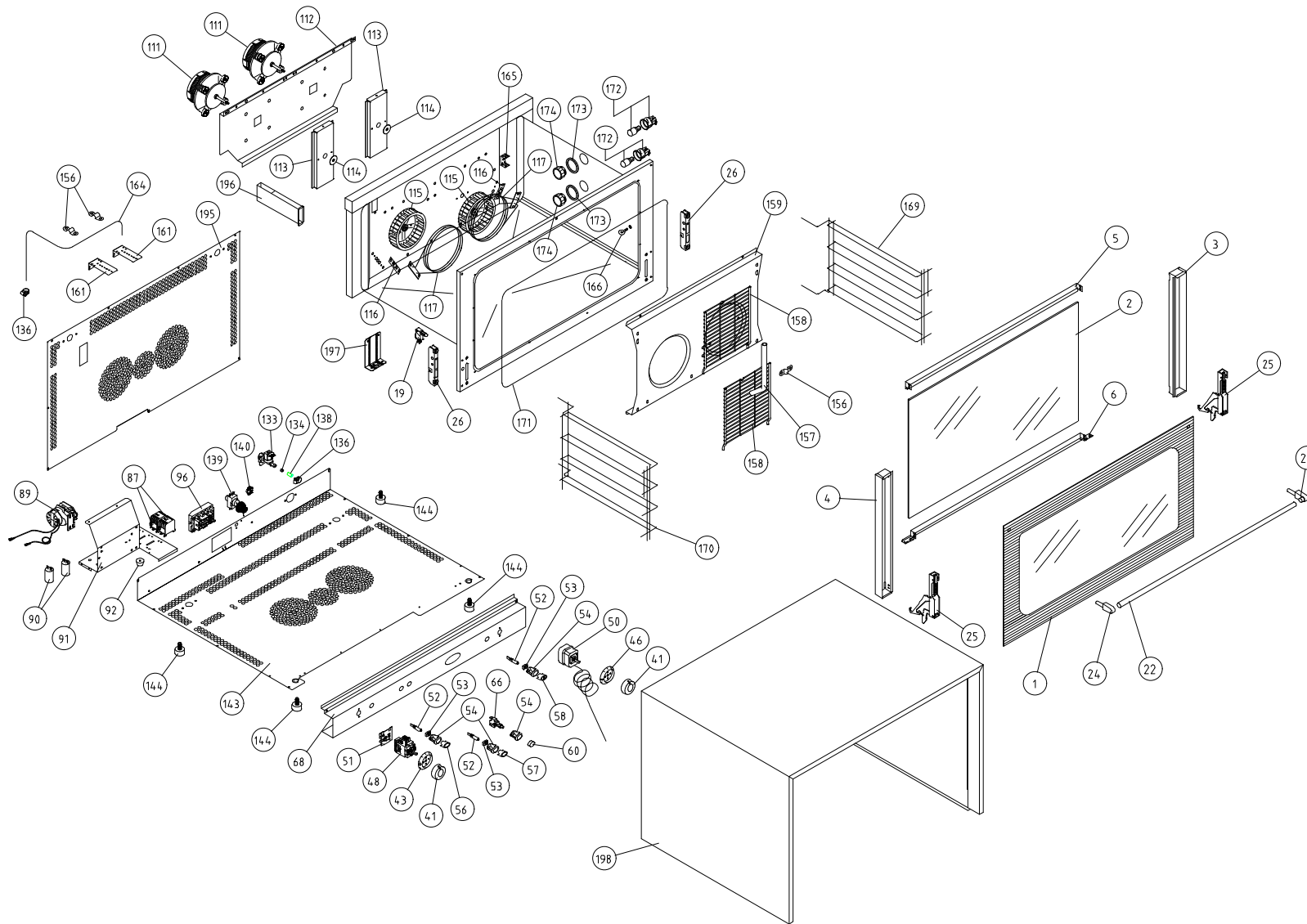
# MOD: XF090P

## EXPLODED VIEW DISEGNO ESPLOSO



### LEGEND - LEGENDA

1	VT066A	56	VE164
2	VT067D	57	VE166
3	2B113	58	VE165
4	2B114	60	VE175
5	OB110C	66	VE169
6	OB119C	68	2A0017
19	VE086B	87	VE208
22	2H060	89	VN032
24	MG119	90	VE222
25	CR065	91	OH296B
26	CR100	92	PD020
41	MNI000A0	96	CE203
43	MNI050A0	111	VN027
46	MNI065A0	112	OH553
48	TM023	113	6H022
50	TR006	114	GN034
51	TM012B	115	VN1020A0
52	VE177	116	GN224
53	VE162	117	RS026A
54	VE161	133	EL1085A0
		136	EL1055A0
		139	TR254
		140	VM250
		143	2E017A
		144	PD031
		156	2H070
		157	2H557
		158	GR313
		159	OG015A
		161	KH071A
		164	2H556A
		165	OH318A
		166	GR321
		169	GR028
		170	GR029
		171	GN036C
		172	VE028
		173	GN1005A0
		174	VE1010A1
		195	6F015A
		196	OH057
		197	OH1065A0
		198	2D015



# MOD: XF090P

## EXPLODED VIEW DISEGNO ESPLOSO



### DESCRIZIONE CODICI

1	VT066A	VETRO EST SER. 815x448x4 BETFL XF090P '01
2	VT067D	VETRO INT 728x442x5 TFG XF090P '01
3	2B113	COLONNA LAT.DX PORTA ARIANNA/ROSSELLA
4	2B114	COLONNA LAT.SX PORTA ARIANNA/ROSSELLA
5	OB110C	LIST. SUP. PORTA XF085-XF090 VETRO DA 5MM 10/10
6	OB119C	LIST. INF. PORTA XF085/90/95 PIEGATO VETRO DA 5MM 10/10
19	VE086B	MICROINTERRUTTORE PORTA MF09 16A
22	2H060	MANIGL TUBO AISI304 D=15 L=756 XF085/90
24	MG119	TERMINALE MANIGLIA F085C25APORTA FREDDA
25	CR065	CERN DX/SX ROSSELLA 41013020 0797
26	CR100	PORTARULLINO FORI SVASATI 42008750
41	MN1000A0	MANOPOLA CON INDICE SERIGR. ARGENTO
43	MN1050A0	GHIERA PER TIMER 0-120 MIN STD ARGENTO
46	MN1065A0	GHIERA PER TERMOSTATO 80-300 °C XF006-016 ARGENTO
48	TM023	TIMER M12 120 min 2678 A 250V 16A
50	TR006	TERMOSTATO 50-295 °C 55.19052.861
51	TM012B	SUONERIA BUZZER ELETTR. 15 SEC. USA-EUR FASTON SALDATI
52	VE177	LUCE SPIA FLUORO STD 230V
53	VE162	SUPPORTO LAMPADA INTERNO
54	VE161	SUPPORTO D16 ELLITTICO NERO PAST

56	VE164	GEMMA VERDE TERMOMETRO ORO
57	VE166	GEMMA VERDE NUVOLETTA ORO
58	VE165	GEMMA VERDE SINUSOIDE ORO
60	VE175	TASTO ARGENTO OPACO NUVOLETTA ORO
66	VE169	PULSANTE UNIPOLARE NA
68	2A0017	CRUSC INOX GREZZO XF085/90
87	VE208	TELERUTTORE 3TG1010-AL2 AC-1 20A
89	VN032	INVERTITTORE P19.5J.02.H6.17 -0198
90	VE222	CONDENS.ICAR PRL 3,15uF
91	0H296B	PORTA COMP. EL. XF085/E-XF100-XF090/95
92	PD020	PIEDINO GOMMA NERO 29x12
96	CE203	MORSETTIERA KADO 1/6
111	VN027	MOTORE K48207 M01814 CONDENS.3,15uF
112	0H553	PROF.SOST.MOTORI UNIV. '00
113	6H022	SUPPORTO PREMISTOPPA '99 ZINCATO
114	GN034	GUARN. PREMISTOPPA D30-d8-5p8/10
115	VN1020A0	VENTOLA D=196 H=42 38 PALE DADO M8
116	GN224	GUARN.PTFE+CARB 100x22x0,8sp-c/fori 1999
117	RS026A	RES.CIRC. 3100W 220-230V D=230 INT=86 Z.F.
133	EL1085A0	ELETTR.SING. ATT. J.GUEST INCORPORATO CON RID.MARR.TARAT
136	EL1055A0	RIDUZIONE J.G. DA D=10 A D=8 PM201008E
139	TR254	TERM.SIC.BIP.335 °C RIARMO MANUALE
140	VM250	MORSETT.A.PETTINE
143	2E017A	FONDO ZINCATO ELENA ROSSELLA XA085/90
144	PD031	PIEDINO NERO H=20 4483.EB01
156	2H070	PROFILO FERMA TUBO UMIDITA' LAVATO
157	2H557	TUBO INT.UM. SV=263 D=13 XF090 XG410 VENT. D200
158	GR313	GRIGLIA PROT.VENTOLA D=200 INOX
159	OG015A	CARTER ARIA INOX ROSSELLA '00
161	KH071A	STAFFA FISS.OMEGA FERMA TUBO UMID.
164	2H556A	TUBO EST.UMIDITA' SV=885 XV401/501-XG410
165	0H318A	SOSTEGNO BULBO STANDARD '02
166	GR321	OCCHIELLO SOST.GRIGLIA LAT INOX
169	GR028	GRIGLIA LAT.DX ROSSELLA '98
170	GR029	GRIGLIA LAT.SX ROSSELLA '98
171	GN036C	GUARNIZIONE PORTA NERA XT55/65 8G ROSSELLA XF LINE
172	VE028	PORTALAMPADE+LAMPADINA 77.222..1001.10
173	GN1005A0	GUAR.PTFE+CARB. ø53x44x4 PORTALAMP.
174	VE1010A1	VETRO COPRILAMPADA TEMPERATO ANTISHOCK
195	6F015A	SCHIENA ZINCATA ROSSELLA
196	0H057	CAMINO FUMI ROSSELLA
197	0H1065A0	NUOVO SOSTEGNO MUFFOLA STANDARD
198	2D015	MANTELLINO INOX ROSSELLA

### DESCRIPTION

1	VT066A	EXT.SER. GLASS 815x448x4 BETFL XF090P '01
2	VT067D	INT.DOOR GLASS 728x442x5 TFG XF090P '01
3	2B113	DOOR RIGHT SIDE COLUMN ARIANNA/ROSSELLA
4	2B114	DOOR LEFT SIDE COLUMN ARIANNA/ROSSELLA
5	OB110C	DOOR UPPER LISTEL XF085-XF090 WITH GLASS 5mm 10/10
6	OB119C	DOOR LOWER LISTEL XF085/90/95 BENDED GLASS 5MM THICK 1
19	VE086B	DOOR MICROSWITCH MF09 16A
22	2H060	TUBO HANDLE AISI304 D 15 L=756 XF085/90
24	MG119	DOOR HANDLE TERMINAL
25	CR065	RIGHT/LEFT HINGE ROSSELLA 0797
26	CR100	ROLLER HOLDER COUNT.SUNK HOLE 42008750
41	MN1000A0	KNOB WITH SER.SILVER INDEX
43	MN1050A0	PLASTIC DIAL FOR TIMER 0-120 MIN STD W/ SILVER DIGITS
46	MN1065A0	PLASTIC DIAL FOR THERMOSTAT 80-300 °C XF006-016 SILVER DI
48	TM023	TIMER M12 120 min 2678 A 250V 16A
50	TR006	THERMOSTAT 50-295 °C 55.19052.861
51	TM012B	ELECTRONIC BUZZER 15 SEC. USA-EUR WELDED FASTON
52	VE177	FLUORINE WARNING LIGHT STD 230V
53	VE162	INTERNAL PILOT LAMP SUPPORT
54	VE161	BLACK ELLIPTICAL SUPPORT D16

56	VE164	GREEN PILOT WITH GOLD THERMOMETER SERIGRAPHY
57	VE166	GREEN PILOT WITH GOLD "CLOUD"
58	VE165	GREEN PILOT WITH GOLD SINUSOIDE SERIGRAPHY
60	VE175	OPAQUE SILVER KEY WITH GOLD "CLOUD" SERIGRAPHY
66	VE169	UNIPOLAR NA PUSH BUTTON
68	2A0017	UNPROCESSED STAINLESS STEEL CONTROL PANEL XF085/90
87	VE208	REMOTE CONTROL SWITCH 3TG1010-AL2 AC-1 20A
89	VN032	REVERS SWITCH MOTOR P19.5J.02.H6.17
90	VE222	CONDENSER ICAR PRL 3,15uF
91	0H296B	ELECTRIC COMPONENTS HOLDER XF085/E-XF100-XF090/95
92	PD020	BLACK RUBBER FOOT 29x12
96	CE203	TERMINAL BOARD K1/6
111	VN027	MOTOR K48207 M01814 CONDENS.3,15uF
112	0H553	UNIVERSAL MOTOR SUPPORT PROFILE '00
113	6H022	ZINCED MOTOR SUPPORT '99
114	GN034	PACKING GLAND GASKET D 30-d8-5p8/10
115	VN1020A0	BLADE FAN Ø196x43 39 BLADES AISI316L 8/10
116	GN224	PTFE+CARB 100x22x0,8sp-w/holes 1999 GASKET
117	RS026A	CIRC.HEAT. ELEMENT 3100W 220-230V D=230 INT=86 COLD ARE
133	EL1085A0	WATER SINGLE ELECTROVALVE WITH RAPID CONNECTION & WAT
136	EL1055A0	J.G. REDUCTION FROM D=10 TO D=8 PM201008E
139	TR254	SECURITY THERMOSTAT BIP. 335 °C
140	VM250	"COMB" TERMINAL BOARD
143	2E017A	ZINCED ELENA ROSSELLA BOTTOM XA085/90
144	PD031	BLACK FOOT H=20 4483.EA01X
156	2H070	WASHED PROFILE TO HOLD HUMIDITY TUBE
157	2H557	ROSSELLA INT.HUMIDITY TUBE SV=263 D=13 XF090 XG410 VENT.
158	GR313	FAN PROTECTION GRID D=200 INOX
159	OG015A	STAINLESS STEEL ROSSELLA '00 FAN GUARD
161	KH071A	BRACKET TO FIX OMEGA TO FIX WATER PIPE
164	2H556A	WATER EXTERNAL PIPE SV=885 XV401/501-XG410
165	0H318A	ENG-SOSTEGNO BULBO STANDARD '02
166	GR321	INOX LATERAL GRID EYELET SUPPORT
169	GR028	RIGHT LATERAL GRID ROSSELLA '98
170	GR029	LEFT LATERAL GRID ROSSELLA '98
171	GN036C	BLACK DOOR GASKET XT55/65 8 HOOKS ROSSELLA XF LINE
172	VE028	LAMP HOLDER+LIGHT BULB
173	GN1005A0	PTFE+CARB. ø53x44x4 LAMP HOLDER GASKET
174	VE1010A1	VETRO COPRILAMPADA TEMPERATO ANTISHOCK
195	6F015A	ZINCED BACK PANEL ROSSELLA
196	0H057	EXHAUST FUME CHIMNEY ROSSELLA
197	0H1065A0	NEW STANDARD CAVITY SUPPORT
198	2D015	STAINLESS STEEL COVER FOR OVEN ROSSELLA