

Ersatzteilkatalog

Spare parts list

PALUX FunctionLine

Einbecken-Fritteuse

Doppelbecken-Fritteuse

Elektronik - Einbecken-Fritteuse

Elektronik - Doppelbecken-Fritteuse

Elektronik - Großbeckenfritteuse



Dieser Ersatzteilkatalog ist gültig

- ab Baujahr 2003
- Elektronik-Fritteusen ab Baujahr 9.2005

Typenübersicht

829196 Einbecken-Fritteuse 400 V

829218 Doppelbecken-Fritteuse 400 V

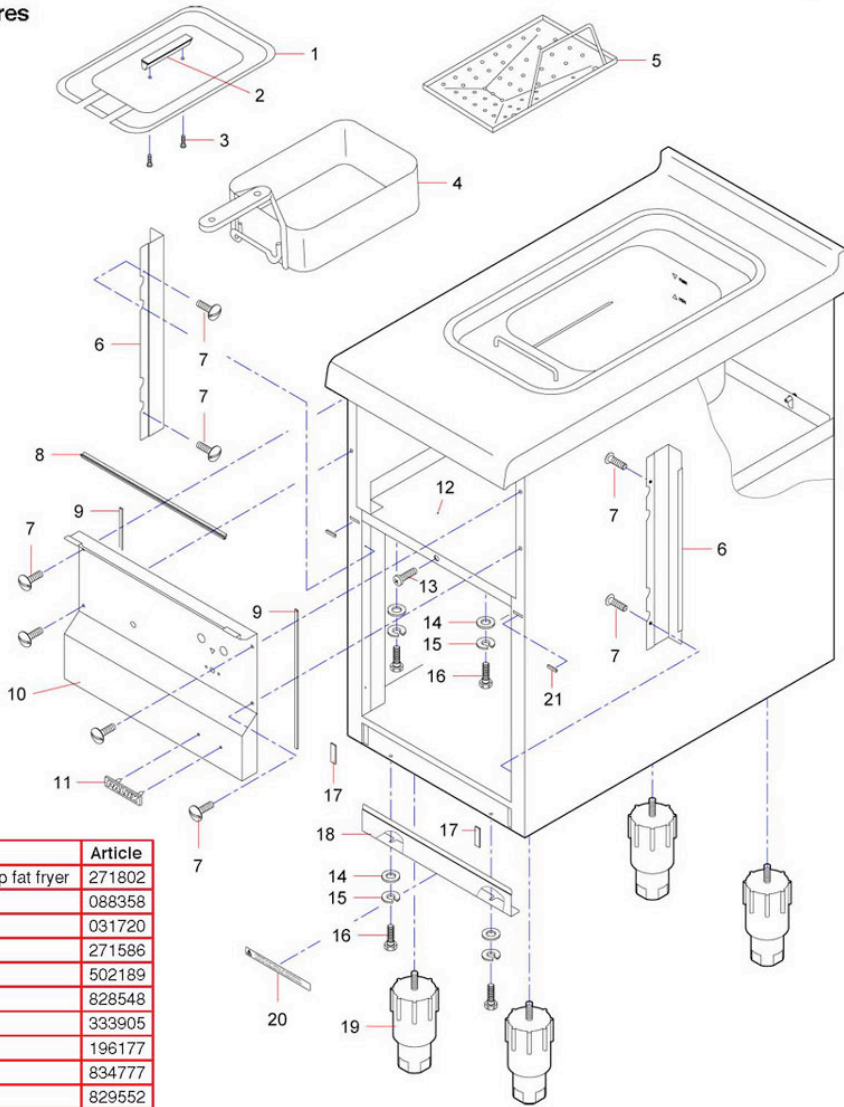
853623 Einbecken-Fritteuse 230 V

921564 Elektronik - Einbecken-Fritteuse

921574 Elektronik - Doppelbecken-Fritteuse

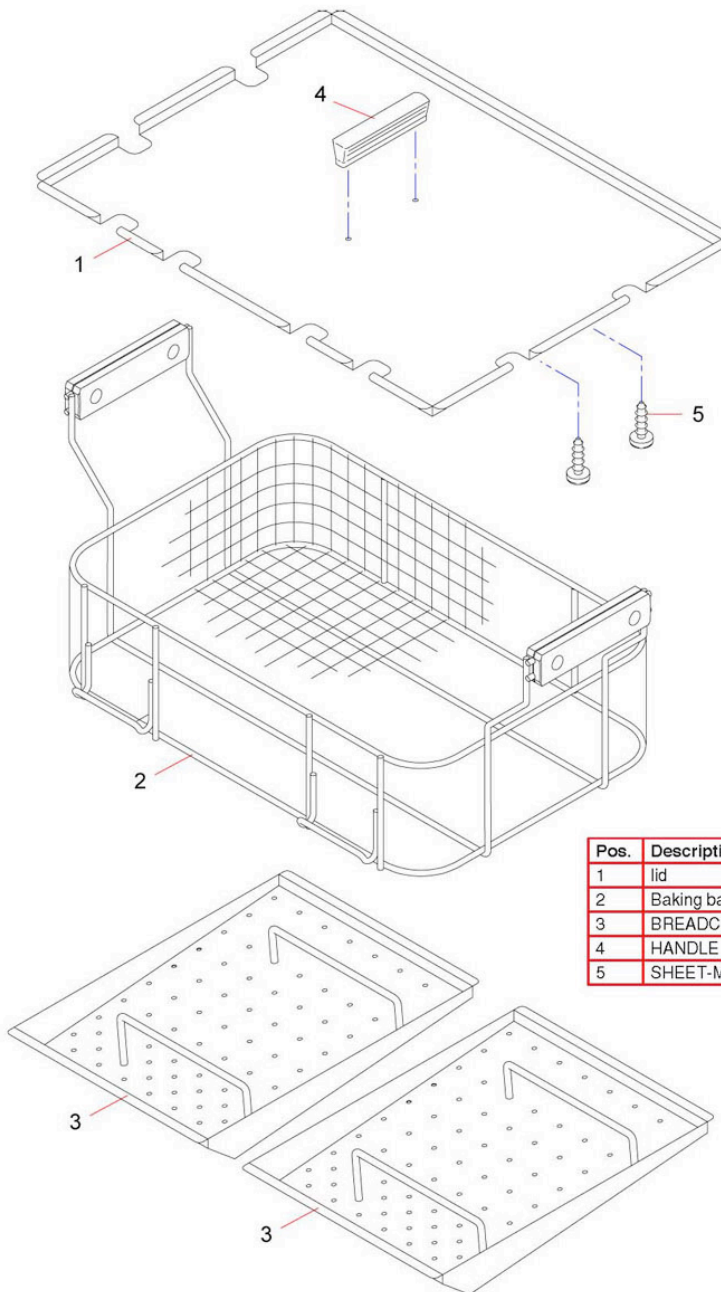
922021 Elektronik - Großbecken-Fritteuse

housing, accessoires



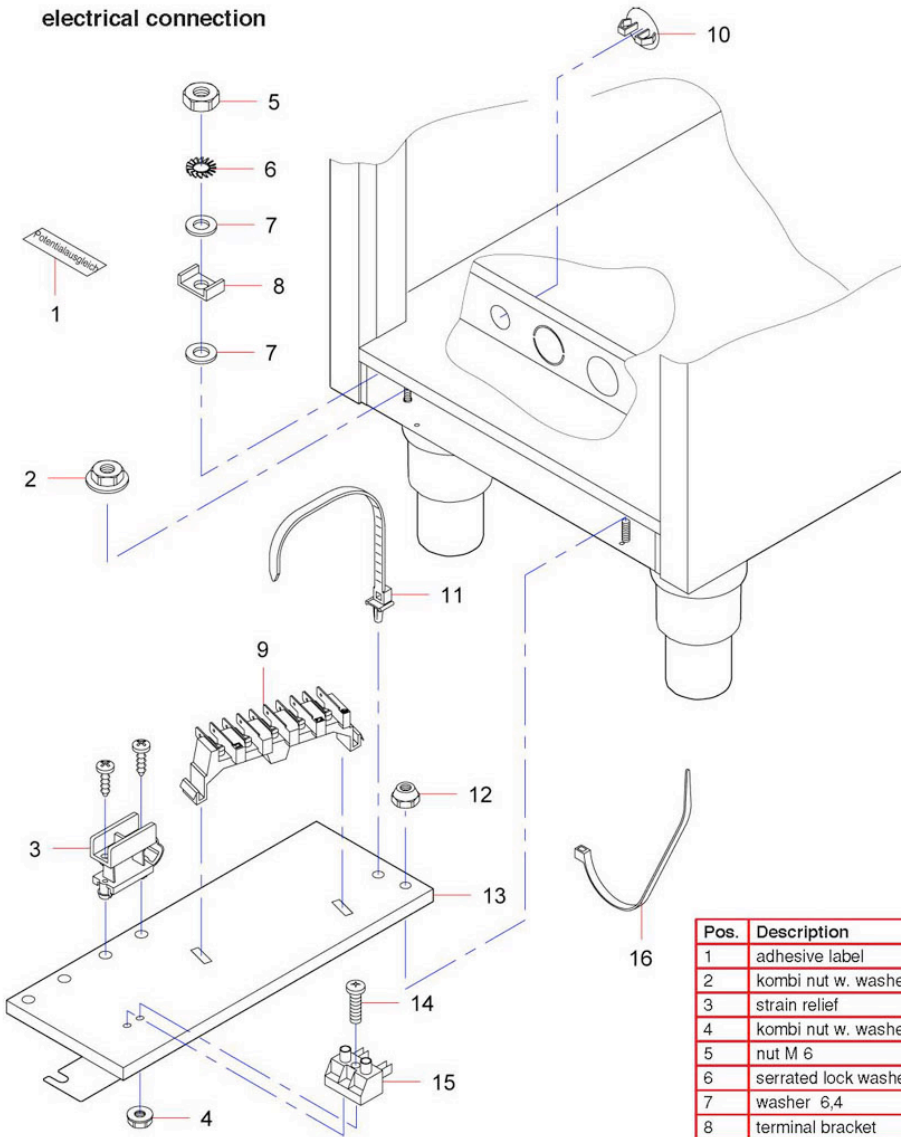
| Pos. | Description | Article |
|------|---|---------|
| 1 | lid for single and twin deep fat fryer | 271802 |
| 2 | handle | 088358 |
| 3 | sheet metal screw | 031720 |
| 4 | basket for deep-fat fryer | 271586 |
| 5 | bread crumb sieve | 502189 |
| 6 | installation channel 375 | 828548 |
| 7 | oval head screw M4X8 | 333905 |
| 8 | silicone profile | 196177 |
| 9 | sealing profile | 834777 |
| 10 | front panel 400 | 829552 |
| 10 | front panel 600 | 829617 |
| 11 | Palux sign | 830755 |
| 12 | intermediate sheet metal 400 | 829560 |
| 12 | intermediate sheet metal 600 | 829625 |
| 13 | screw M 4X8 | 001015 |
| 14 | washer 4,3 | 001007 |
| 15 | spring lock washer A4 | 001023 |
| 16 | screw M 4X10 | 068217 |
| 17 | silicone foam profile joint | 696390 |
| 18 | cover bottom side | 828556 |
| 18 | cover bottom side | 829471 |
| 19 | foot for appliance 150 | 705659 |
| 20 | adhesive label | 621382 |
| 21 | cover for bearing | 530743 |
| | Portionskorb kpl. (für Einhängung vorne, Griff seitlich) | 374512 |

electronic Deep Fat Fryer - accessoires



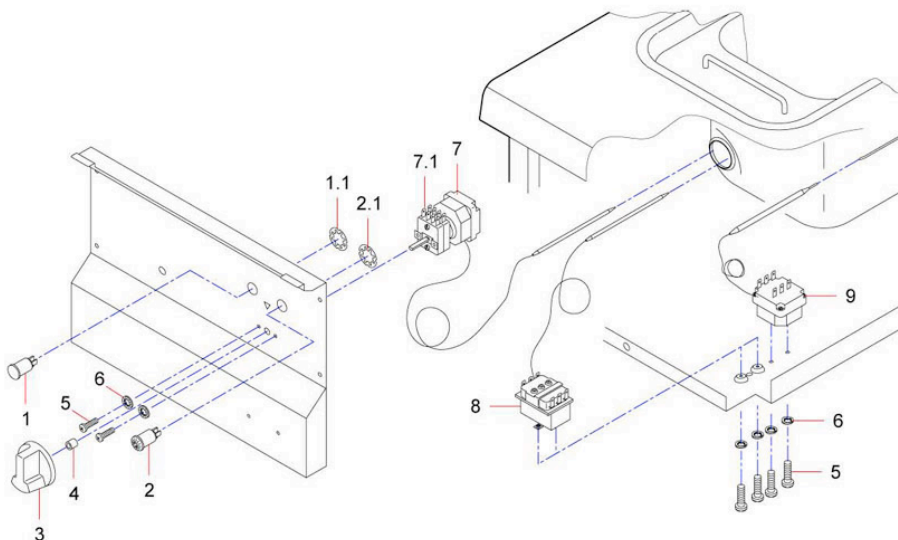
| Pos. | Description | Article |
|------|----------------------------------|---------|
| 1 | lid | 922277 |
| 2 | Baking basket for Deep-fat fryer | 922218 |
| 3 | BREADCRUMB SIEVE | 922196 |
| 4 | HANDLE | 088358 |
| 5 | SHEET-METAL SCREW B 3.9X9.5 | 031720 |

electrical connection



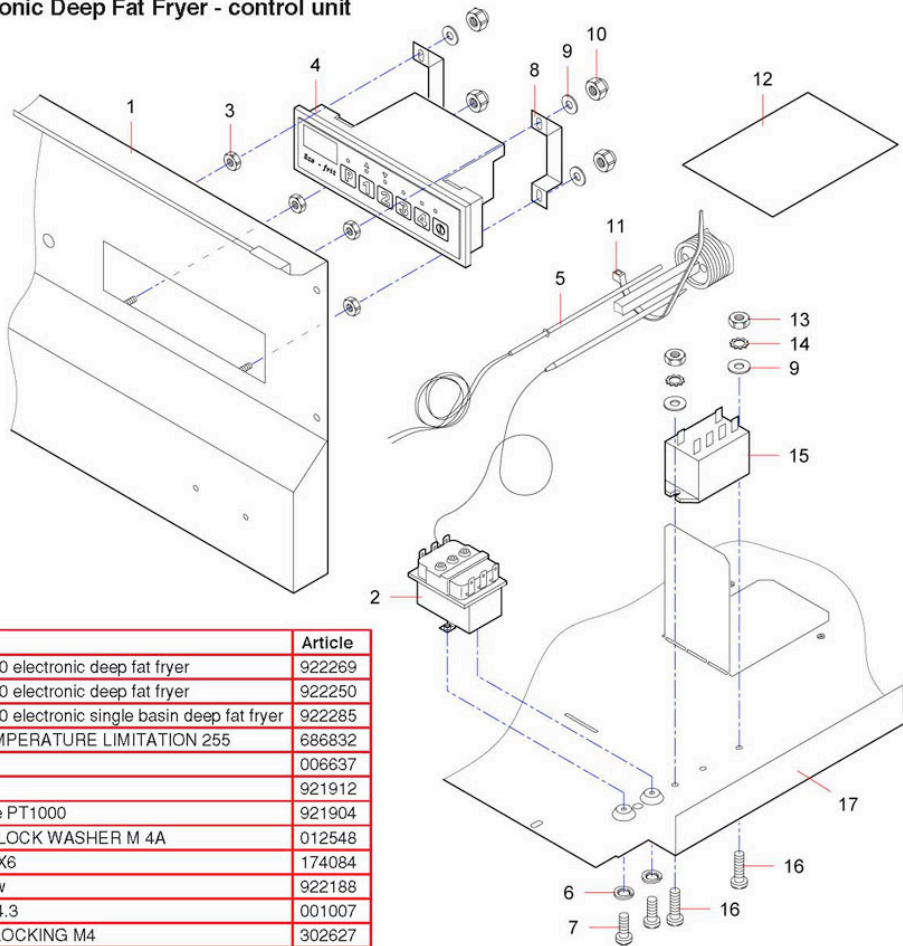
| Pos. | Description | Article |
|------|---------------------------|---------|
| 1 | adhesive label | 217360 |
| 2 | kombi nut w. washer | 541397 |
| 3 | strain relief | 814636 |
| 4 | kombi nut w. washer | 377740 |
| 5 | nut M 6 | 251887 |
| 6 | serrated lock washer A6.4 | 006777 |
| 7 | washer 6,4 | 004014 |
| 8 | terminal bracket | 223697 |
| 9 | mains connecting clamp | 829927 |
| 10 | covering cap | 023620 |
| 11 | armature clamp detachable | 388017 |
| 12 | nut M 5 self securing | 025097 |
| 13 | electro mounting sheet | 828645 |
| 13 | electro mounting sheet | 828688 |
| 14 | screw M 4X25 | 010642 |
| 15 | plug in strip | 070858 |
| 16 | cable tie | 161179 |

thermostat, lamp, switch toggle, cable



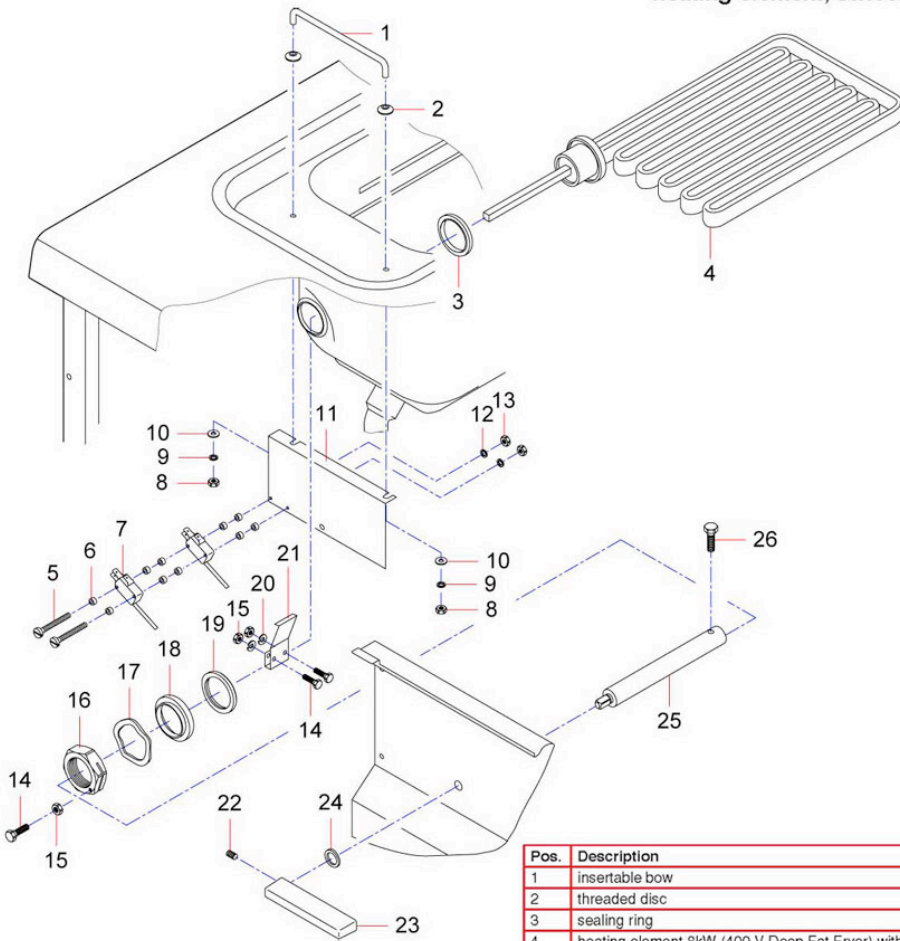
| Pos. | Description | Article |
|------|--|---------|
| 1 | signal lamp yellow 250V | 694320 |
| 1.1 | spring lock washer | |
| 2 | signal lamp 250V | 694339 |
| 2.1 | spring lock washer | |
| 3 | toggle | 388416 |
| 4 | hose section | 632236 |
| 5 | screw M 4X6 | 174084 |
| 6 | serrated lock washer M 4A | 012548 |
| 7 | capacitive regulator 130-180 | 026611 |
| 7.1 | rotary selector switch | 325384 |
| 8 | safety temp. limiter 255 | 686832 |
| 9 | capillary tube controller | 136840 |
| | ----- Deep Fat Fryer ----- | |
| | cable harness main connection | 828998 |
| | cable cpl. | 024252 |
| | cable cpl. | 310697 |
| | ----- Dual Deep Fat Fryer ----- | |
| | cable harness main connection | 830593 |
| | cable cpl. | 637629 |
| | ----- Deep Fat Fryer and Dual Deep Fat Fryer ----- | |
| | cable harness | 712752 |
| | cable harness | 539724 |
| | cable cpl. | 331384 |
| | cable cpl. | 637521 |

electronic Deep Fat Fryer - control unit



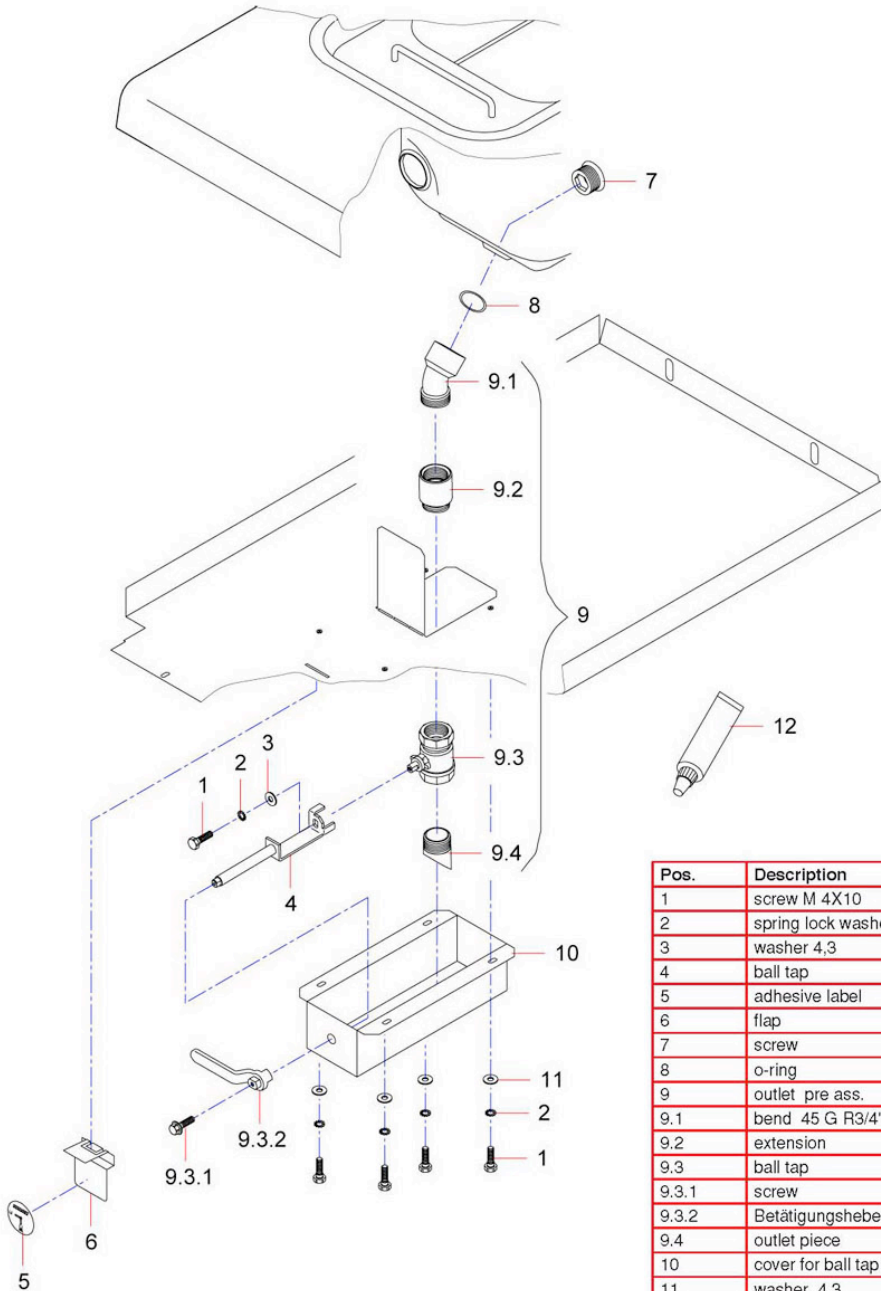
| Pos. | Description | Article |
|------|---|---------|
| 1 | frontpanel 400 electronic deep fat fryer | 922269 |
| 1 | frontpanel 600 electronic deep fat fryer | 922250 |
| 1 | frontpanel 600 electronic single basin deep fat fryer | 922285 |
| 2 | SAFETY TEMPERATURE LIMITATION 255 | 686832 |
| 3 | NUT M 4 | 006637 |
| 4 | control unit | 921912 |
| 5 | thermocouple PT1000 | 921904 |
| 6 | SERRATED LOCK WASHER M 4A | 012548 |
| 7 | SCREW M 4X6 | 174084 |
| 8 | mounting bow | 922188 |
| 9 | WASHER A 4,3 | 001007 |
| 10 | NUT, SELF-LOCKING M4 | 302627 |
| 11 | Kabelbinder 2,5x98 | 161179 |
| 12 | cover sheet | 922129 |
| 13 | OVAL-HEAD SCREW M4X8 | 333905 |
| 14 | TOOTHED LOCK WASHER J 4.3 | 050849 |
| 15 | relay | 849618 |
| 16 | SCREW M 4X10 | 010502 |
| 17 | intermediate sheet metal 400 | 829560 |
| 17 | intermediate sheet metal 600 | 829625 |
| | ----Deep Fat Fryer---- | |
| | cable harness cpl. | 921696 |
| | cable cpl. | 310697 |
| | CABLE CPL. | 637521 |
| | ----Dual Deep Fat Fryer---- | |
| | cable harness cpl. | 921696 |
| | CABLE CPL. | 637629 |
| | cable cpl. 4,0 QMM GNGE L=120 | 310697 |
| | cable cpl. 2,5 QMM GN/GE L=800 | 637521 |
| | ----Bulk Pan Deep Fat Fryer---- | |
| | cable harness cpl. | 922323 |
| | cable cpl. 4,0 QMM GNGE L=120 | 310697 |
| | cable cpl. 2,5 QMM GN/GE L=800 | 637521 |

heating element, swivel mechanism



| Pos. | Description | Article |
|------|--|---------|
| 1 | insertable bow | 271640 |
| 2 | threaded disc | 125954 |
| 3 | sealing ring | 261033 |
| 4 | heating element 8kW (400 V Deep Fat Fryer) without sealing ring | 602051 |
| 4 | heating element 6 kW (230 V Deep Fat Fryer) without sealing ring | 257001 |
| 5 | screw M 3X40 | 055719 |
| 6 | insulation bushing | 682233 |
| 7 | micro switch | 680907 |
| 8 | nut M 5 | 252867 |
| 9 | spring lock washer A5 | 003964 |
| 10 | washer 5,3 | 082155 |
| 11 | angle bracket | 831360 |
| 11 | angle bracket bulk pan deep fat fryer | 922153 |
| 12 | spring lock washer A3 | 000418 |
| 13 | nut M 3 | 000396 |
| 14 | screw M4X16 | 189499 |
| 15 | nut M 4 | 003905 |
| 16 | clamping nut M 36X1.5 | 264849 |
| 17 | corugated spring lock washer | 276308 |
| 18 | retaining ring deep fat fryer | 262161 |
| 19 | sealing ring | 262153 |
| 20 | spring lock washer A4 | 001023 |
| 21 | switch plate | 288942 |
| 22 | threaded pin M 5x6 | 133957 |
| 23 | handle enamelled | 065307 |
| 24 | washer 10,5 | 012602 |
| 25 | extension | 831395 |
| 26 | screw M 6X10 | 251836 |

tube outlet



| Pos. | Description | Article |
|-------|-----------------------|---------|
| 1 | screw M 4X10 | 068217 |
| 2 | spring lock washer A4 | 001023 |
| 3 | washer 4,3 | 026999 |
| 4 | ball tap | 828750 |
| 5 | adhesive label | 363782 |
| 6 | flap | 711837 |
| 7 | screw | 640999 |
| 8 | o-ring | 272825 |
| 9 | outlet pre ass. | 829579 |
| 9.1 | bend 45 G R3/4" | 270830 |
| 9.2 | extension | 830496 |
| 9.3 | ball tap | 728969 |
| 9.3.1 | screw | |
| 9.3.2 | Betätigungshebel | |
| 9.4 | outlet piece | 697575 |
| 10 | cover for ball tap | 828777 |
| 11 | washer 4,3 | 001007 |
| 12 | loctite no. 510 | 048739 |