

TAVOLA / DRAWING 2253

MOD. 9FTE90L

EL. FRY-TOPS S.990S COD.:

317400 9FTE90LRC

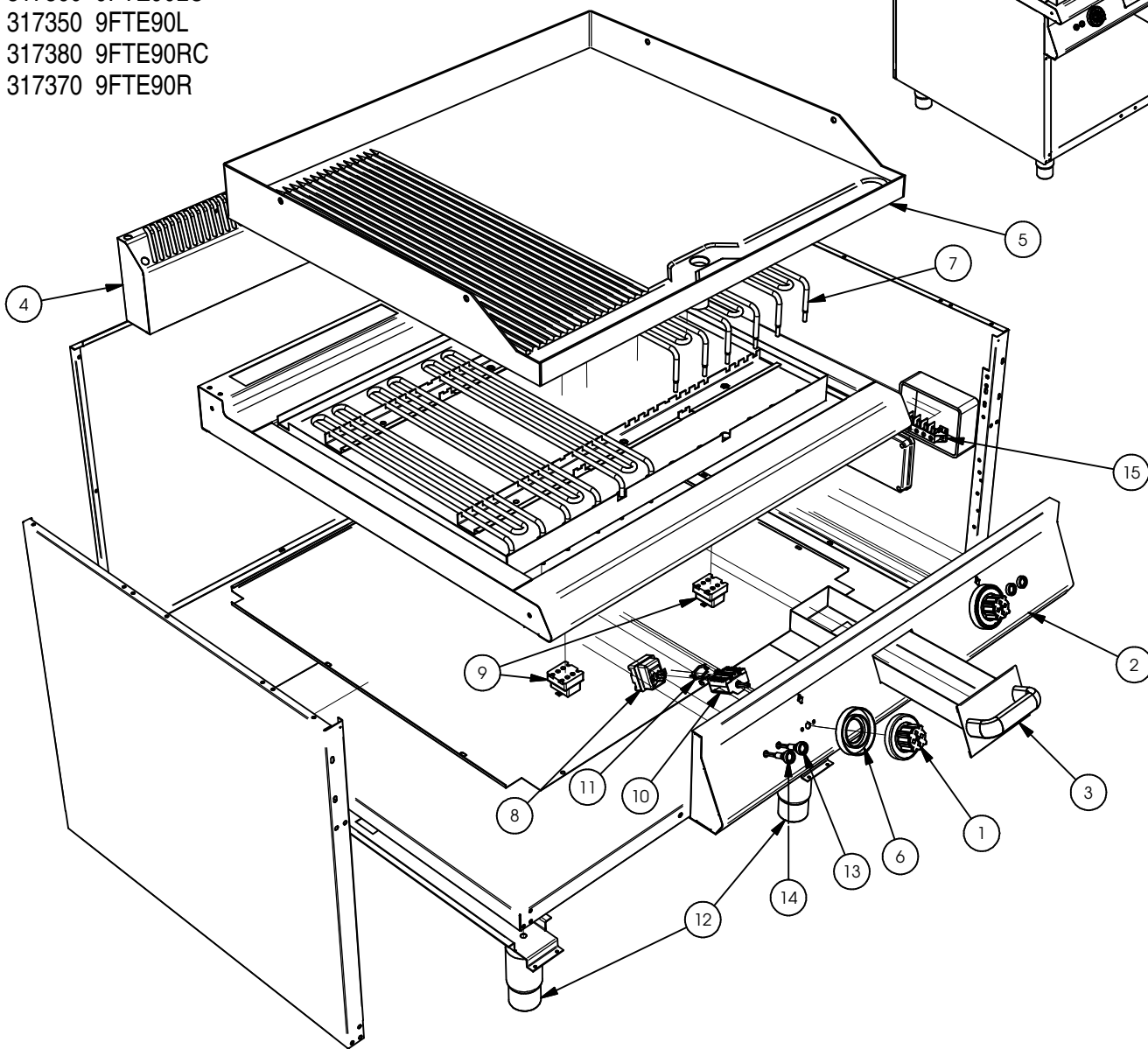
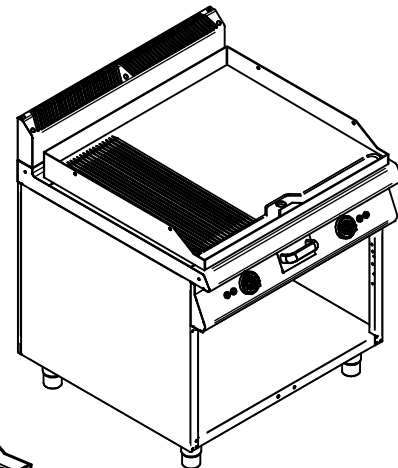
317390 9FTE90LR

317360 9FTE90LC

317350 9FTE90L

317380 9FTE90RC

317370 9FTE90R



| | | | |
|----|---------|---|---|
| 1 | 401421 | MANOPOLA COMP.TERM.FRY-TOP+FORNO EL | KNOB FOR THERMOSTAT |
| 2 | 4105990 | CRUSCOTTO COM.FRY-TOP ELET.900 S.9S | 800 GAS FRY TOP FRONT PANEL |
| 3 | 4127001 | CASSETTO RA.GOCCE ASS.FRYTOP S.7/9S | DRIP CATCHER DRAWER |
| 4 | 4302273 | SCARICO FUMO ASS. ASOLE 900 STILE | EXHAUST GRATE |
| 5 | 431968 | PIASTRA EL. LISCIA CROMATA | SMOOTH CHROMIUM PLATE |
| 5 | 431972 | PIASTRA EL. LISCIA NORMALE | SMOOTH PLATE |
| 5 | 431976 | PIASTRA EL. RIGATA CROMATA | SCORED CHROMIUM PLATE |
| 5 | 431980 | PIASTRA EL. RIGATA NORMALE | SCORED PLATE |
| 5 | 431983 | PIASTRA EL. 2/3 LISCIA 1/3 RIGATA NORMALE | 2/3 SMOOTH 1/3 SCORED PLATE |
| 5 | 431987 | PIASTRA EL. 2/3 LISCIA 1/3 RIGATA CROMATA | 2/3 SMOOTH 1/3 SCORED CHROMIUM PLATE |
| 6 | 835575 | GHIERA PLAST.CHIUSURA MANOP.ELE.13H | PLASTIC COVER FOR KNOB |
| 7 | 843629 | RESISTENZA FRY-TOP 2000W 230V.S.900 | HEATING ELEMENT S.700 230V 1600 W FRY-TOP |
| 8 | 843735 | TERMOST.VAR.50-300° FRY 5534062819 | WORK THERMOSTAT 50 – 300° |
| 9 | 843737 | TERMOSTATO DI SICUREZZA 5532562808 | SAFETY THERMOSTAT |
| 10 | 843746 | COMMUTATORE/INTERRUTTORE 4941015300 | MAIN SWITCH/COMMUTATOR |
| 11 | 843753 | STAFFETTA COLLEGAMENTO 0000617078 | CONNECTING BRACKET COMM./THERMOSTAT |
| 12 | 844380 | PIEDE 2"INOX 145-200 EP1XBXBONNSV | 2" STAINLESS STEEL FOOT |
| 13 | 849411 | SPIA VERDE V.220 | GREEN WARNING LIGHT 220V |
| 14 | 849417 | SPIA ROSSA V.220 | RED WARNING LIGHT 220V |
| 15 | 849517 | MORSETTIERA 6 POLI FV122/6/40A | TERMINAL BOARD |