

**ESPLOSO  
EXPLODED VIEW  
VUE ECLATEE**

**MACINADOSATORE KOLD  
KOLD GRINDER DOSER  
MOULIN DOSEUR KOLD**

ESKLDOS 01.01 07/2014



MAZZER LUIGI s.r.l.  
VIA MOGLIANESE, 113  
30030 GARDIGIANO DI SCORZE' (VE)  
ITALIA  
TEL. +39 041 5830200 r.a. - FAX +39 041 5830060  
E-mail: mazzler@mazzler.com – <http://www.mazzler.com>

N°	DESCRIZIONE	CODICE	Q.	NOTE
1	COPERCHIO CAMPANA KOLD HOPPER COVER COUVERCLE DE TRÉMIE	SKL0COD01/QQQ	1	
2A	CAMPANA KOLD HOPPER KOLD TRÉMIE KOLD	SKLSCAE01/QQQ	1	VERSIONI/VERSIONS/VERSIONS 220-240V / 50HZ / 1PH 230-415V / 50HZ / 3PH
2B	CAMPANA KOLD USA    CAMPANA+ETICHETTA HOPPER KOLD USA    HOPPER+LABEL TRÉMIE KOLD USA    TRÉMIE+ÉTIQUETTE	SKLSCAE02/QQQ	1	VERSIONI/VERSIONS/VERSIONS 110V / 60HZ / 1PH 100V / 50-60HZ / 1PH 220V / 60HZ / 1 PH 220V / 60HZ / 3PH 200V / 50-60HZ / 3PH
3	ETICHETTA "CAUTION - HOPPER" LABEL: "CAUTION - HOPPER" ÉTIQUETTE "ATTENTION TRÉMIE"	S000ETA15/AQQ	1	VERSIONI/VERSIONS/VERSIONS 110V / 60HZ / 1PH 100V / 50-60HZ / 1PH 220V / 60HZ / 1 PH 220V / 60HZ / 3PH 200V / 50-60HZ / 3PH
4	PERNO FISSAGGIO CAMPANA KOLD HOPPER KOLD LOCKING PIVOT PIVOT DE BLOCAGE DE TRÉMIE KOLD	SKL0PEA02/QQQ	2	
5	MICROINTERRUTTORE SICUREZZA CAMPANA CA. HOPPER SAFETY SWITCH INTERRUPTEUR DE SÛRETÉ	S00SINR03/QQQ	1	
6	CAPPUCCIO VITI TCE M6 CAP FOR TCE M6 SCREWS CAP POUR VIS TCE M6	S000CAP02/QQQ	5	
7	ETICHETTA "ROTAZIONE MOTORE" LABEL: "MOTOR ROTATION" ÉTIQUETTE "ROTATION MOTEUR"	S000ETA00/QQQ	1	
8	TESTA KOLD AUTOMATICO KOLD BODY-HEAD TÊTE KONY	SKL0TEB02/QQQ	1	
9	FILTRO VENTOLA 80X80 CON LOGO MAZZER FILTER FOR FAN 80X80 FILTRE VENTILATEUR 80X80	S000FIVM4/QQQ	1	
10	SUPPORTO VENTOLA 80X80 (MOD. ELETTR.) FRAME FOR FAN 80X80 SUPPORT VENTILATEUR 80X80	S000SUV04/BQQ	1	
11	VENTILATORE 80X80 CABLATO FAN 80X80 WITH WIRING VENTILATEUR 80X80 AVEC CÂBLAGE	S00SVEB02/QQQ	1	
12	VENTILATORE 80X80 CABLATO CON SUPPORTO FAN 80X80 WITH WIRING AND FAN BEARING VENTILATEUR 80X80 AVEC CÂBLAGE + SUPPORT	S00SVEB04/QQQ	1	
13	SUPPORTO FISSO MANOPOLA KOLD KNOB FIX SUPPORT SUPPORT FIXE MANETTE KOLD	SKL0SUF03/QQQ	1	DALLA MATRICOLA 1423678 START FROM SERIAL NUMBER 1423678 À PARTIR DU NUMÉRO DE SÉRIE 1423678
14	ANELLO GRADUATO MANOPOLA KOLD KNOB GRADUATED RING ANNEAU GRADUÉ MANETTE KOLD	SKL0ANA04/QQQ	1	DALLA MATRICOLA 1423678 START FROM SERIAL NUMBER 1423678 À PARTIR DU NUMÉRO DE SÉRIE 1423678
15	MOLLA RITORNO MANOPOLA KNOB RETURN SPRING RESSORT RAPPEL MANETTE	SKL0MOB01/QQQ	1	
16	CHIAVETTA 3X3X8 UNI 6604 A KEY 3X3X8 UNI 6604 A CLAVETTE 3X3X8 UNI 6604 A	SOCH30008/QQQ	1	DALLA MATRICOLA 1423678 START FROM SERIAL NUMBER 1423678 À PARTIR DU NUMÉRO DE SÉRIE 1423678
17	SUPPORTO MOBILE MANOPOLA KOLD KNOB MOBILE SUPPORT SUPPORT AMOVIBLE MANETTE KOLD	SKL0SUM02/QQQ	1	DALLA MATRICOLA 1423678 START FROM SERIAL NUMBER 1423678 À PARTIR DU NUMÉRO DE SÉRIE 1423678
18	MANOPOLA REGOLAZIONE MACINATURA KOLD KOLD GRIND ADJUSTMENT KNOB MANETTE DE REGLAGE MOUTURE KOLD	SKL0MAB04/QQQ	1	DALLA MATRICOLA 1423678 START FROM SERIAL NUMBER 1423678 À PARTIR DU NUMÉRO DE SÉRIE 1423678
19	VITE TSPE 5x35 DIN 7991 ZINC. SCREW-TSPE 5x35 DIN 7991 ZINC-COATED VIS-TSPE 5x35 DIN 7991 ZINGUE	SVSE50350/QQQ	1	
20	TAPPO IN PLASTICA TPB 11x13x5 NERO PLASTIC CAP TPB 11x13x5 BOUCHON EN PLASTIQUE TPB 11x13x5 NOIR	S000TAB07/QQQ	1	
21	ASSE MANOPOLA KOLD KNOB AXLE AXE MANETTE KOLD	SKL0ASM02/QQQ	1	DALLA MATRICOLA 1423678 START FROM SERIAL NUMBER 1423678 À PARTIR DU NUMÉRO DE SÉRIE 1423678
22	RONDELLA DI SPESSORAMENTO 16x22x0,5 SPACE WHASER 16x22x0,5 RONDELLE ENTRETOISE 16x22x0,5	SORP16022/QQQ	1	

N°	DESCRIZIONE	CODICE	Q.	NOTE
23	ASSIEME MANOPOLA KOLD COMPLETE KOLD KNOB MANETTE KOLD COMPLETE	SKLSMAB01/QQQ	1	
24A	PORTAMACINE SUPERIORE KOLD MONOFASE KOLD SINGLE PHASE UPPER GRINDING BLADE HOLDER PORTE MEULES SUPÉRIEUR KOLD MONOPHASÉ	SKL0POA01/QQQ	1	VERSIONI MONOFASE SINGLE PHASE VERSIONS VERSIONS MONOPHASÉ
24B	PORTAMACINE SUPERIORE KOLD TRIFASE KOLD THREE PHASES UPPER GRINDING BLADE HOLDER PORTE MEULES SUPÉRIEUR KOLD TRIPHASÉ	SKL0POA02/QQQ	1	VERSIONI TRIFASE THREE PHASES VERSIONS VERSIONS TRIPHASÉ
25	ELICA ROBUR MONOFASE (FUSIONE) (*) PROPELLER ROBUR (SINGLE PHASE) (*) HÉLICE ROBUR MONOPHASÉ (*)	SRO0ELI01/QQQ	1	VERSIONI MONOFASE SINGLE PHASE VERSIONS VERSIONS MONOPHASÉ
26A	COPPIA DI MACINE CONICHE 186C CONICAL GRINDING BLADE 186C PAIRE DE MEULES CONIQUES 186C	FMA00186C/CQQ	1	VERSIONI MONOFASE SINGLE PHASE VERSIONS VERSIONS MONOPHASÉ
26B	COPPIA DI MACINE CONICHE 187C CONICAL GRINDING BLADE 187C PAIRE DE MEULES CONIQUES 187C	FMA00187C/CQQ	1	VERSIONI TRIFASE THREE PHASES VERSIONS VERSIONS TRIPHASÉ
27	PORTAMACINE INFERIORE ROBUR ROBUR LOWER GRINDING BLADE HOLDER PORTE MEULES INFÉRIEUR ROBUR	SRO0POA07/QQQ	1	
28	MOLLA REGOLAZIONE MACINATURA KOLD GRINDING ADJUSTMENT SPRING RESSORT RÉGLAGE MOUTURE	SKL0MOB02/QQQ	1	
29	SUPPORTO ASSE VITE SENZA FINE KOLD WORM SCREW AXLE SUPPORT SUPPORT AXE VIS SANS FIN KOLD	SKL0SUP01/QQQ	1	
30	VITE SENZA FINE KOLD KOLD WORM SCREW VIS SANS FIN KOLD	SKL0VSF01/QQQ	1	
31	ASSE VITE SENZA FINE KOLD WORM SCREW AXLE AXE VIS SANS FIN KOLD	SKL0ASA01/QQQ	1	
32	RUOTA DENTATA ELICOIDALE KOLD KOLD HELICAL GEAR ROUE À DENTURE HÉLICOÏDALE KOLD	SKL0RUD01/QQQ	1	
33	CUSCINETTO 6002 DDU CM BEARING 6002 DDU CM ROULEMENT 6002 DDU CM	S000CUA11/QQQ	3	
34	BOCCOLA DI FISSAGGIO CUSCINETTI KOLD KOLD BALL BEARING BUSHING DOUILLE DE FIXATION ROULEMENTS KOLD	SKL0BOC01/QQQ	1	
35	CHIAVETTA 3X3X30 UNI 6604 A CLAVETTE 3X3X30 UNI 6604 A KEY 3X3X30 UNI 6604 A	S0CH30030/QQQ	1	
36	ALBERO MACINATURA KOLD KOLD GRINDING SHAFT ARBRE MOUTURE POUR KOLD	SKL0ALM02/QQQ	1	
37	CHIAVETTA 4X4X22 UNI 6604 A KEY 4X4X22 UNI 6604 A CLAVETTE 4X4X22 UNI 6604 A	S0CH40022/QQQ	1	
38	ALBERO PULEGGIA CONDOTTA KOLD DRIVEN PULLEY SHAFT ARBRE POULIE CONDUITE KOLD	SKL0ALP02/QQQ	1	
39	ANELLO OR-SEAL 4462 NB70 RING O.R.- SEAL 4462 NB70 ANNEAU O.R.- SEAL 4462 NB70	S000ANA03/AQQ	1	
40	CUSCINETTO 6204 DDU CM BEARING 6204 DDU CM ROULEMENT 6204 DDU CM	S000CUA04/AQQ	3	
41	BACINELLA MACINATURA KOLD GRINDING TRAY FOR KOLD CUVE DE MOUTURE KOLD	SKL0BAA01/QQQ	1	
42	CALOTTA PORTACUSCINETTO KOLD BALL BEARING HOLDER CAP CAPOT POUR ROULEMENTS KOLD	SKL0CAP01/QQQ	1	
43	PULEGGIA CONDOTTA KOLD KOLD DRIVEN PULLEY POULIE CONDUITE KOLD	SKL0PUC02/QQQ	1	
44	GHIERA AUTOBLOCCANTE M17X1 THREADED LOCKING RING M17x1 COLLIER INDÉSERRABLE M17X1	SGHA17001/QQQ	1	
45	CUSCINETTO 6202 DDU CM BEARING 6202 DDU CM ROULEMENT 6202 DDU CM	S000CUA07/AQQ	1	

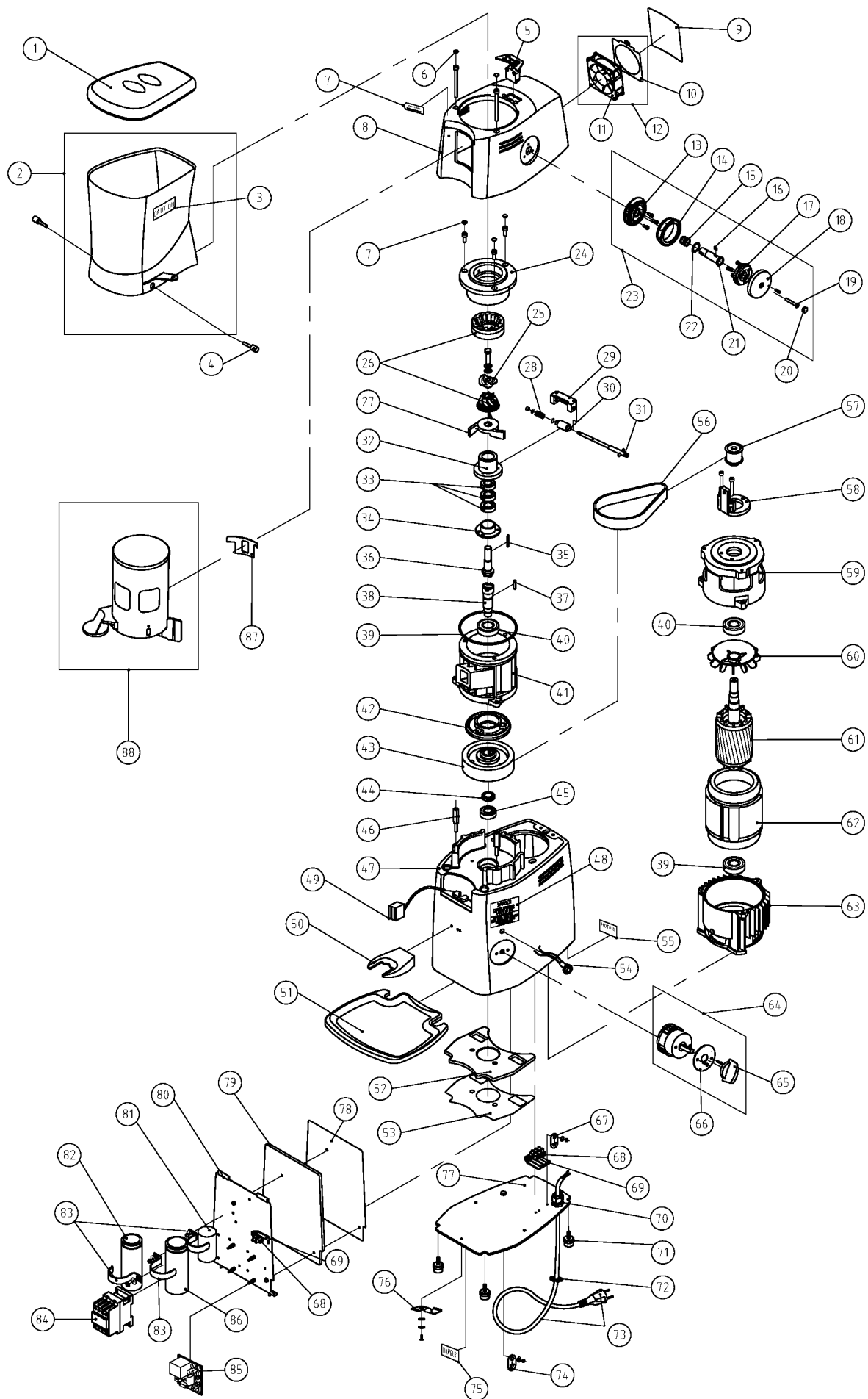
N°	DESCRIZIONE	CODICE	Q.	NOTE
46	PERNO FISSAGGIO BACINELLA KOLD FIXING PIN FOR TRAY TIGE DE FIXATION CUVE KOLD	SKL0PEA01/QQQ	2	
47	CASTELLO KOLD KOLD BODY CARROSSERIE DE KOLD	SKL0CAA02/QQQ	1	
48	ETICHETTA "DANGER" LABEL: "DANGER" ÉTIQUETTE "DANGER"	-	1	VERSIONI/VERSIONS/VERSIONS 110V / 60HZ / 1PH 100V / 50-60HZ / 1PH 220V / 60HZ / 1 PH
49	CABLAGGI PER MICRO SUPERIORE ED INFERIORE WIRINGS FOR UPPER AND LOWER MICROSWITCH CÂBLAGES MICRO SUPÉRIEUR ET INFÉRIEUR	S00SCAB01/AQQ	1	
50	FORCHETTA FORK FOURCHETTE	S000F0B02/CQQ	1	
51	PIATTINO S. JOLLY-MAJOR-KONY SUPER JOLLY-MAJOR-KONY DRIP TRAY PLATEAU S. JOLLY-MAJOR-KONY	SSJ0PIB02/QQQ	1	
52	SPESSORE ISOLANTE SUPERIORE KOLD UPPER INSULATING ÉPAISSEUR ISOLANT THERMIQUE SUPÉRIEUR KOLD	SKL0IS001/QQQ	1	
53	COPERTURA SPESSORE ISOLANTE SUPERIORE KOLD COVERE FOR UPPER INSULATING COUVERTURE ÉPAISSEUR ISOLANT SUPÉRIEUR KOLD	SKL0CPS01/QQQ	1	
54A	LAMPADINA SPIA 230/400V, VERDE PILOT LIGHT 230/400V, GREEN LAMPE TÉMOIN 230/400V, VERT	S000LAA06/QQQ	1	VERSIONI/VERSIONS/VERSIONS 220-240V / 50HZ / 1PH 220V / 60HZ / 1PH 230-415V / 50HZ / 3PH 200V / 50-60HZ / 3PH 220V / 60HZ / 3PH
54B	LAMPADINA SPIA 110V UL, ROSSA C.S.B. PILOT LIGHT 110V UL, RED LAMPE TÉMOIN 110V UL, ROUGE	S000LAA07/QQQ	1	VERSIONI/VERSIONS/VERSIONS 110V / 60HZ / 1PH 100V / 50-60HZ / 1PH
55	ETICHETTA MOTORE MOTOR LABEL ÉTIQUETTE MOTEUR	-	1	
56	CINGHIA 475-SLV5 25 BELT 475-SLV5 25 COURROIE 475-SLV5 25	SKL0CIB01/QQQ	1	
57	PULEGGIA MOTRICE KOLD KOLD DRIVING PULLEY POULIE MOTEUR KOLD	SKL0PUM02/QQQ	1	
58	BLOCCHETTO TENDICINGHIA KOLD BACKSTAND TENDEUR DE COURROIE KOLD	SKL0BLT01/QQQ	1	
59	CALOTTA SUPERIORE MOTORE KOLD UPPER MOTOR CAP KOLD COUVERCLE MOTEUR SUPÉRIEUR KOLD	SKL0CAB02/QQQ	1	
60	VENTOLA ROBUR ROBUR COOLING FAN APPAREIL VENTILANT ROBUR	SR00VEA02/QQQ	1	
61	ROTORE KOLD KOLD ROTOR ROTOR DE KOLD	SKL0ROA01/QQQ	1	
62A	PACCO AVVOLTO ROBUR 220-240/50/1 ROBUR COILED STATOR 220-240/50/1 STATOR DE ROBUR 220-240/50/1	SROSPAE01/QQQ	1	VERSIONI/VERSIONS/VERSIONS 220-240V / 50HZ / 1PH
62B	PACCO AVVOLTO ROBUR 110/60/1 ETL ROBUR COILED STATOR 110/60/1 ETL STATOR DE ROBUR 110/60/1 ETL	SROSPAA08/QQQ	1	VERSIONI/VERSIONS/VERSIONS 110V / 60HZ / 1PH
62C	PACCO AVVOLTO ROBUR 220/60/1 ROBUR COILED STATOR 220/60/1 STATOR DE ROBUR 220/60/1	SROSPAS01/QQQ	1	VERSIONI/VERSIONS/VERSIONS 220V / 60HZ / 1PH
62D	PACCO AVVOLTO ROBUR 100/50-60/1 ROBUR COILED STATOR 100/50-60/1 STATOR DE ROBUR 100/50-60/1	SROSPAJ00/QQQ	1	VERSIONI/VERSIONS/VERSIONS 100V / 50-60HZ / 1PH
62E	PACCO AVVOLTO ROBUR 230-400/50/3 ROBUR COILED STATOR 230-400/50/3 STATOR DE ROBUR 230-400/50/3	SROSPAE03/QQQ	1	VERSIONI/VERSIONS/VERSIONS 230-415 / 50HZ / 3PH
62F	PACCO AVVOLTO ROBUR 200/50-60/3 ROBUR COILED STATOR 200/50-60/3 STATOR DE ROBUR 200/50-60/3	SROSPAJ03/QQQ	1	VERSIONI/VERSIONS/VERSIONS 200V / 50-60HZ / 3PH
62G	PACCO AVVOLTO ROBUR 220/60/3 ROBUR COILED STATOR 220/60/3 STATOR DE ROBUR 220/60/3	SROSPAU03/QQQ	1	VERSIONI/VERSIONS/VERSIONS 220V / 60HZ / 3PH

N°	DESCRIZIONE	CODICE	Q.	NOTE
63	CALOTTA INFERIORE MOTORE KOLD LOVER MOTOR CAP KOLD COUVERCLE MOTEUR INFÉRIEURE KOLD	SKL0CAB01/QQQ	1	
64A	INTERRUTTORE ROTATIVO BIPOLARE + FASE AUSILIARIA TWO POLE ROTATIVE SWITCH WITH AUXILIARY PHASE INTERRUPTEUR ROTATIF BIPOLAIRE + PHASE AUXILIAIRE	S000INA13/AQQ	1	VERSIONE AUTOMATICA MONOFASE SINGLE PHASE AUTOMATIC VERSION VERSION AUTOMATIQUE MONOPHASE
64B	INTERRUTTORE ROTATIVO TRIPOLARE + FASE AUSILIARIA THREE POLE ROTATIVE SWITCH WITH AUXILIARY PHASE INTERRUPTEUR ROTATIF TRIPOLAIRE + PHASE AUXILIAIRE	S000INA10/AQQ	1	VERSIONE AUTOMATICA TRIFASE THREE PHASES AUTOMATIC VERSION VERSION AUTOMATIQUE TRIPHASE
65	MANOPOLINA INTERRUTTORE ROTATIVE SWITCH KNOB MANETTE INTERRUPTEUR	S000MAB05/QQQ	1	
66	TARGA INTERRUTTORE O/I/START SWITCH PLATE O/I/START PLAQUE INTERRUPTEUR O/I/START	S000TAA07/QQQ	1	
67	TARGA "TERRA" "GROUND" PLATE PLAQUE "TERRE"	S000TAA18/QQQ	1	
68	MORSETTIERA ALTA PASSO 10 TERMINAL BOARD DOMINO	S000MOA04/QQQ	1	12 POLI
69	SOTTOMORSETTIERA PASSO 10 UNDER TERMINAL BOARD SOUS-DOMINO	S000SOT02/QQQ	1	12 POLI
70	PASSACAVO HSK-K PG11 NERO CABLE LOCKING HSK-K PG11 BLACK PASSE CÂBLE HSK-K PG11 NOIR	S000PAB15/QQQ	1	
71	PIEDINO D.20X15 ZINC. BIANCO DD 2015 H SUPPORT LEG PIED DD 2015 H	P000PIA04/QQQ	4	
72	DADO POLIAMMIDE PG11 NERO NUT FOR CABLE LOCKING ÉCROU CHAUMARD	S000DAA02/QQQ	1	
73A	CAVO ELETTRICO "ITALIA" ELECTRIC CABLE "ITALY" CÂBLE ÉLECTRIQUE "ITALIE"	S000CAD01/BQQ	1	
73B	CAVO ELETTRICO "EUROPA" ELECTRIC CABLE "EUROPE" CÂBLE ÉLECTRIQUE "EUROPE"	S000CAD04/BQQ	1	
73C	CAVO ELETTRICO "AMERICA" ELECTRIC CABLE "U.S.A." CÂBLE ÉLECTRIQUE "U.S.A."	S000CAD11/AQQ	1	
73D	CAVO ELETTRICO "AUSTRALIA" ELECTRIC CABLE "AUSTRALIA" CÂBLE ÉLECTRIQUE "AUSTRALIE"	S000CAD07/BQQ	1	
73E	CAVO ELETTRICO "GRAN BRETAGNA" ELECTRIC CABLE "GREAT BRITAIN" CÂBLE ÉLECTRIQUE "ANGLETERRE"	S000CAD08/BQQ	1	
73F	CAVO ELETTRICO "ISRAELE" ELECTRIC CABLE "ISRAEL" CÂBLE ÉLECTRIQUE "ISRAËL"	S000CAD10/BQQ	1	
73G	CAVO ELETTRICO "SVIZZERA" ELECTRIC CABLE "SWITZERLAND" CÂBLE ÉLECTRIQUE "SUISSE"	S000CAD06/BQQ	1	
73H	CAVO ELETTRICO "CINA" ELECTRIC CABLE "CHINA" CÂBLE ÉLECTRIQUE "CHINE"	S000CAD16/QQQ	1	
73I	CAVO ELETTRICO "ARGENTINA" ELECTRIC CABLE "ARGENTINA" CÂBLE ÉLECTRIQUE "ARGENTINE"	S000CAD18/QQQ	1	
73J	CAVO ELETTRICO "COREA" ELECTRIC CABLE "KOREA" CÂBLE ÉLECTRIQUE "CORÉE"	S000CAD19/QQQ	1	
73K	CAVO ELETTRICO TRIFASE 230V ELECTRIC CABLE THREE PHASES 230V CÂBLE ÉLECTRIQUE TRIPHASE 230V	S000CAD09/BQQ	1	
73L	CAVO ELETTRICO TRIFASE 400V ELECTRIC CABLE THREE PHASES 400V CÂBLE ÉLECTRIQUE TRIPHASE 400V	S000CAD03/CQQ	1	
74	TARGA "MORSETTO EQUIPOTENZIALE ESTERNO" "EXTERNAL UNIPOTENTIAL CLAMP" PLATE PLAQUE "BORNE ÉQUIPOTENTIELLE EXTERNE"	S000TAA19/QQQ	1	VERSIONI/VERSIONS/VERSIONS CE - KC
75	ETICHETTA "DANGER" LABEL: "DANGER" ÉTIQUETTE "DANGER"	S000ETA14/AQQ	1	VERSIONI/VERSIONS/VERSIONS 110V / 60HZ / 1PH 100V / 50-60HZ / 1PH 220V / 60HZ / 1 PH

N°	DESCRIZIONE	CODICE	Q.	NOTE
76	LAMELLA FERMA PIATTINO DRIP TRAY LOCKING PLATE PLAQUE POUR BLOC PLATEAU	SSJ0LAM01/AQQ	1	
77	PIASTRA DI BASE KOLD KOLD BOTTOM PLATE PLAQUE FONTE DESSOUS MOULIN KOLD	SKL0PIC01/QQQ	1	
78	COPERTURA SPESSORE ISOLANTE LATERALE KOLD COVER FOR LATERAL INSULATING COUVERTURE ÉPAISSEUR ISOLANT LATÉRALE KOLD	SKL0CPI01/QQQ	1	
79	SPESSORE ISOLANTE LATERALE KOLD LATERAL INSULATING ÉPAISSEUR ISOLANT THERMIQUE LATÉRALE KOLD	SKL0ISO02/QQQ	1	
80	PIASTRA IMPIANTO KOLD KOLD SYSTEM PLATE PLAQUE INSTALLATION ÉLECTRIQUE	SKL0PIM01/QQQ	1	
81A	DISGIUNTORE 220-240V RELAY 220-240V RELAJ 220-240V	S000DIS20/QQQ	1	VERSIONI/VERSIONS/VERSIONS 220-240V / 50HZ / 1PH 220V / 60HZ / 1PH
81B	DISGIUNTORE 100V RELAY 100V RELAJ 100V	S000DIS21/QQQ	1	VERSIONI/VERSIONS/VERSIONS 110V / 60HZ / 1PH 100V / 50-60HZ / 1PH
82A	CONDENSATORE 16µF CAPACITOR 16µF CONDENSATEUR 16µF	S000COE03/QQQ	1	
82B	CONDENSATORE 60µF UL CAPACITOR 60µF UL CONDENSATEUR 60µF UL	S000COE09/QQQ	1	
83A	GRAFFA ZINCATA FR40 CAPACITOR LOCKING CLAMP D.40 AGRAFE ZINGUÉ FR40	S000GRB05/QQQ	1	CONDENSATORE/CAPACITOR/CONDENSATEUR 16µF 20µF 60µF UL
83B	GRAFFA ZINCATA FR50 CAPACITOR LOCKING CLAMP D.50 AGRAFE ZINGUÉ FR50	S000GRB04/QQQ	1	CONDENSATORE/CAPACITOR/CONDENSATEUR 80µF
84A	CONTATTORE BF18.10 230/50 CONTACTOR BF18.10 230/50 CONTACTEUR BF18.10 230/50	S000COC31/QQQ	1	VERSIONI/VERSIONS/VERSIONS 220-230V / 50HZ / 1PH 230V / 50HZ / 3PH
84B	CONTATTORE BF18.10 240/50 CONTACTOR MC 9.10 380/50 (*) CONTACTEUR MC 9.10 380/50 (*)	S000COC33/QQQ	1	VERSIONI/VERSIONS/VERSIONS 230-240V / 50HZ / 1PH
84C	CONTATTORE BF16.10 100/50-60 CONTACTOR BF16.10 100/50-60 CONTACTEUR BF16.10 100/50-60	S000COC15/QQQ	1	VERSIONI/VERSIONS/VERSIONS 100V / 50-60HZ / 1PH
84D	CONTATTORE BF18.10 110/60 CONTACTOR BF18.10 110/60 CONTACTEUR BF18.10 110/60	S000COC30/QQQ	1	VERSIONI/VERSIONS/VERSIONS 110V / 60HZ / 1PH
84E	CONTATTORE BF18.10 220/60 CONTACTOR BF18.10 220/60 CONTACTEUR BF18.10 220/60	S000COC34/QQQ	1	VERSIONI/VERSIONS/VERSIONS 220V / 60HZ / 1PH 220V / 60HZ / 3PH
84F	CONTATTORE BF18.10 400/50 CONTACTOR BF18.10 400/50 CONTACTEUR BF18.10 400/50	S000COC32/QQQ	1	VERSIONI/VERSIONS/VERSIONS 400V / 50HZ / 3PH
84G	CONTATTORE BF16.10 415/50 CONTACTOR BF16.10 415/50 CONTACTEUR BF16.10 415/50	S000COC22/QQQ	1	VERSIONI/VERSIONS/VERSIONS 415V / 50HZ / 3PH
84H	CONTATTORE BF16.10 200/50-60 CONTACTOR BF16.10 200/50-60 CONTACTEUR BF16.10 200/50-60	S000COC16/QQQ	1	VERSIONI/VERSIONS/VERSIONS 200V / 50-60HZ / 3PH
85A	SCHEDA TIMER VENTOLA 220-240V (NEW) BOARD FAN TIMER 220-240V (NEW) CARTE TIMER FAN 220-240V (NEW)	S000SCT16/QQQ	1	VERSIONI/VERSIONS/VERSIONS 220-240V / 50HZ / 1PH 220V / 60HZ / 1PH 230V / 50HZ / 3PH 200V / 50-60HZ / 3PH 220V / 60HZ / 3PH
85B	SCHEDA TIMER VENTOLA 100-120V (NEW) BOARD FAN TIMER 100-120V (NEW) CARTE TIMER FAN 100-120V (NEW)	S000SCT17/QQQ	1	VERSIONI/VERSIONS/VERSIONS 110V / 60HZ / 1PH 100V / 50-60HZ / 1PH
85C	SCHEDA TIMER VENTOLA 380V (NEW) BOARD FAN TIMER 380V (NEW) CARTE TIMER FAN 380V (NEW)	S000SCT18/QQQ	1	VERSIONI/VERSIONS/VERSIONS 380-415V / 50HZ / 3PH
86A	CONDENSATORE 16µF CAPACITOR 16µF CONDENSATEUR 16µF	S000COE03/QQQ	1	VERSIONI/VERSIONS/VERSIONS 220V / 60HZ / 1PH

N°	DESCRIZIONE	CODICE	Q.	NOTE
86B	CONDENSATORE 20µF CAPACITOR 20µF CONDENSATEUR 20µF	S000COE04/QQQ	1	VERSIONI/VERSIONS/VERSIONS 220-240V / 50HZ / 1PH
86C	CONDENSATORE 80µF UL CAPACITOR 80µF UL CONDENSATEUR 80µF UL	S000COE04/QQQ	1	VERSIONI/VERSIONS/VERSIONS 110V / 60HZ / 1PH 100V / 50-60HZ / 1PH
87	GUARNIZIONE AER STOP GASKET AER STOP GARNITURE AER STOP	S000GUA01/QQQ	1	
88	GRUPPO DOSATORE ROBUR AUTOMATICO ROBUR AUTOMATIC DOSER ENSEMBLE DOSEUR ROBUR AUTOMATIQUE	SROSGRE04/QQQ	1	

(\*) NON VENDIBILE COME RICAMBIO  
 (\*) NOT SOLD AS SPARE PART  
 (\*) PAS VENDUE COMME PIECE DETACHEE





N°	DESCRIZIONE	CODICE	Q.	NOTE
1	COPERCHIO DOSATORE DOSER COVER COUVERCLE DOSEUR	S000COD02/QQQ	1	
2	CILINDRO DOSATORE MJ-RO-RL-SK CYLINDER DOSER FOR MJ-RO-RL-SK CYLINDRE DOSEUR	S000CIA03/QQQ	1	
3	MANOPOLINA DI REGOLAZIONE DOSE ADJUSTMENT KNOB ÉCROU DE RÉGLAGE DOSES	S000MAB02/AQQ	1	
4	STELLA SMUOVICAFFÈ CON ASTINA MAJOR UPPER DOSING STAR FOR MAJOR ÉTOILE SUPÉRIEUR DES DOSES POUR MAJOR	SMJSSTA04/QQQ	1	
5	SETTORE COPRIFORO COFFEE OUTLET COVERING SECTION PLATE ENTRETOISE	S000SEA01/QQQ	1	
6	STELLA FEMMINA FEMALE DOSING STAR ÉTOILE FEMELLE	S000STA03/BQQ	1	
7	MOLLA PRESSIONE DOSATURA DOSING SYSTEM PRESSING SPRING RESSORT PRESSION DOSAGE	S000MOB05/QQQ	1	
8	STELLA MASCHIO MALE DOSING STAR ÉTOILE MÂLE	S000STA02/BQQ	1	
9	RONDELLA DOSATORE D.50 SPESS. 0,4 DOSER WASHER D.50 THICK. 0,4 RONDELLE DOSEUR D.50 ÉPAISS. 0,4 INOX	S000ROA02/BQQ	1	
10	MICRO SUPERIORE COMPLETO ROBUR/ROYAL UPPER MICROSWITCH MICRO-SUPÉRIEUR COMPLET	S00SMIA12/QQQ	1	
11	PROTEZIONE USCITA CAFFÈ SJ-MJ-RO-RJ-SK COFFEE OUTLET GUARD SJ-MJ-RO-RJ-SK PROTECTION SORTIE CAFÉ SJ-MJ-RO-RJ-SK	S000PRB02/QQQ	1	
12	TUBO DOSATORE MAJOR AUTOMATICO DOSER PIPE CORPS DE DOSEUR MAJOR	SMJ0TUA04/AQQ	1	
13A	PRESSINO DIAMETRO 53,0 mm COFFEE PRESSING DEVICE D.53 mm PRESSE-CAFÉ D.53 mm	S000PRA02/QAQ	1	
13B	PRESSINO DIAMETRO 54,5 mm COFFEE PRESSING DEVICE D.54,5 mm PRESSE-CAFÉ D.54,5 mm	S000PRA02/QQQ	1	
13C	PRESSINO DIAMETRO 57,5 mm COFFEE PRESSING DEVICE D.57,5 mm PRESSE-CAFÉ D.57,5 mm	S000PRA02/QCQ	1	
14	VITE SENZA TAGLIO BUSH COFFEE OUTLET GUARD COQUILLE PROTECTION SORTIE CAFÉ	S000VIA04/QQQ	2	
15	CONTACOLPI COMPLETO NEW COUNTER COMPTEUR COMPLET	S00SCOB02/QQQ	1	
16	DISTANZIALE STELLA MICRO INFERIORE LOWER MICROSWITCH STAR SPACE ENTRETOISE ÉTOILE MICRO INFÉRIEURE	S000DIA01/AQQ	1	
17	MOLLA MICROSCATTO INFERIORE LOWER MICROSWITCH SPRING RESSORT DE MICRO-INFÉRIEURE	S000MOB06/QQQ	1	
18	STELLA MICROINFERIORE LOWER MICROSWITCH STAR ÉTOILE DÉMARRAGE MICRO-INFÉRIEURE	S000STA05/QQQ	1	
19	MICROINFERIORE COMPLETO LOWER MICROSWITCH MICRO-INFÉRIEURE COMPLET	S00SMIA11/QQQ	1	
20	ANELLO DI COMPENSAZIONE D.32 CORRUGATED RING D.32 ANNEAU ONDULÉ D.32	S000ANA01/AQQ	1	
21	CRICCO RATCHET CLIQUET DENTÉ	S000CRA02/AQQ	1	
22	VITE REGOLAZIONE DOSATURA M8X70 DOSER ADJUSTMENT SCREW - M8X70 VIS DE RÉGULATION DOSAGE	S000VIA01/QQQ	1	
23	FONDO DOSATORE COMPLETO DOSER BOTTOM SET FOND DE DOSEUR COMPLET	S00SFOA01/QQQ	1	

N°	DESCRIZIONE	CODICE	Q.	NOTE
24	MOLLA RITORNO LEVA DOSATURA DOSING LEVER RETURN SPRING RESSORT RAPPEL POIGNÉE DE DOSEUR	S000MOB03/QQQ	1	
25	MOLLA NASELLO NOSE SPRING RESSORT DÉCLIC	S000MOB04/QQQ	1	
26	NASELLO DOSATORE NOSE DÉCLIC DOSEUR	S000NAA01/AQQ	1	
27	FONDO DOSATORE DOSER BOTOM FOND DE DOSEUR	S000FOA03/QQQ	1	
28	LEVA DI DOSATURA DOSING LEVER MANET DE DOSEUR	S00SLEA02/QQQ	1	
29	ETICHETTA "DANGER" LABEL "DANGER" ÉTIQUETTE "DANGER"	S000ETA14/AQQ	1	VERSIONI/VERSIONS/VERSIONS 110V / 60HZ MONOFASE 100V /50-60HZ MONOFASE 115-127V /60HZ MONOFASE 220V / 60HZ MONOFASE
30	STELLA FEMMINA MAGGIORATA OVERSIZED FEMALE DOSING STAR ÉTOILE FEMELLE ÉLEVÉE	S000STA06/AQQ	1	
31	SETTORE COPRIFORO STELLA MAGGIORATA OVERSIZED COFFEE OUTLET COVERING SECTION PLATE ENTRETOISE POUR ÉTOILE FEMELLE ÉLEVÉE	S000SEA02/QQQ	1	
32	MANOPOLINA REGOLAZ. PER STELLA MAGGIORATA OVERSIZED DOSE ADJUSTMENT KNOB ÉCROU POUR ÉTOILE FEMELLE ÉLEVÉE	S000MAB03/AQQ	1	
33	STELLA MAGGIORATA + MANOPOLINA OVERSIZED STAR WITH DOSING KNOB ÉTOILE ÉLEVÉE + ÉCROU DE RÉGLAGE DES DOSES	S00SGRA08/AQQ	1	

