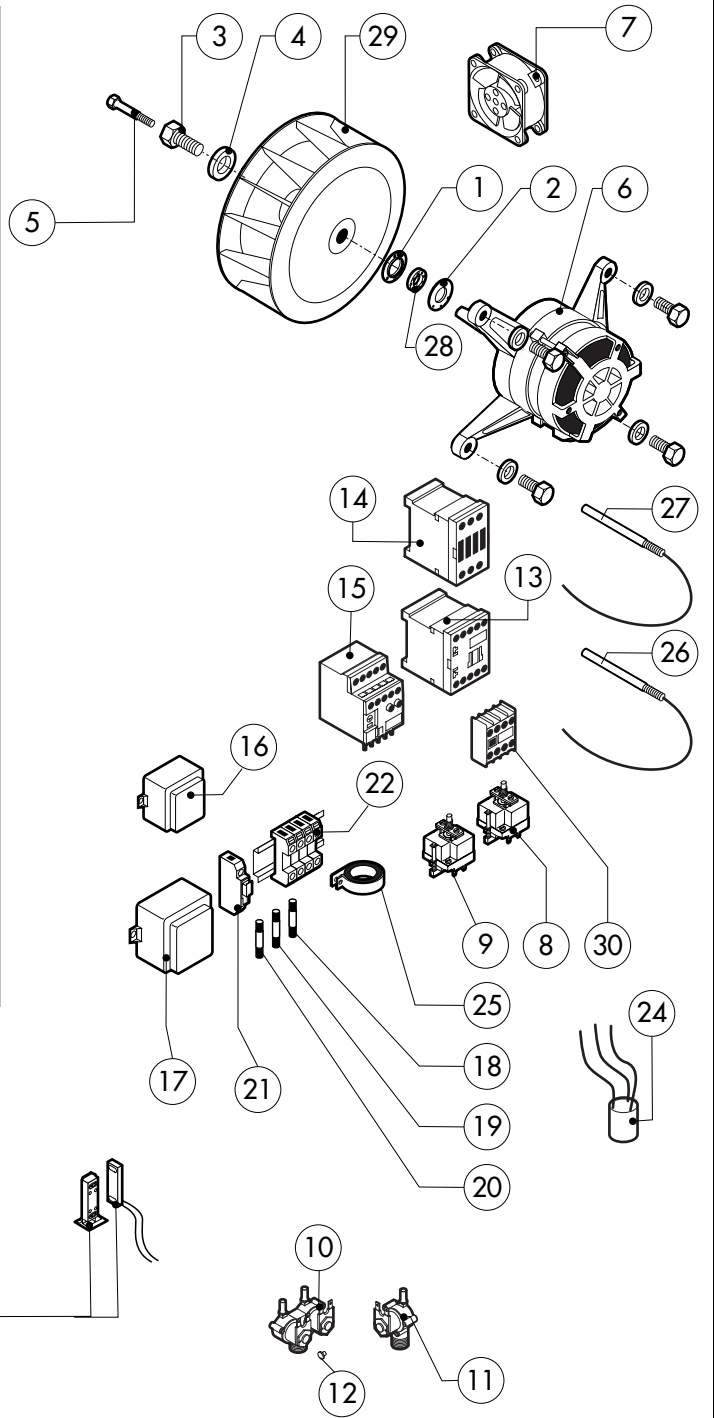
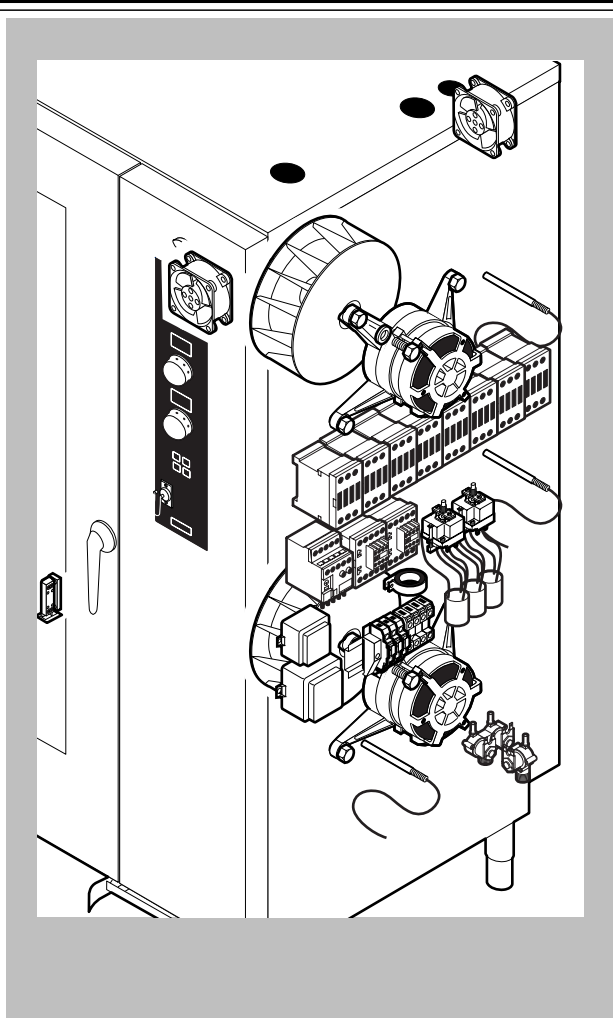


| POS. | CODE | PIECES | DESCRIPTION |
|------|-----------|--------|--------------------------------|
| 1 | R14212850 | 1 | DOOR |
| 2 | R14212900 | 1 | INNER DOOR PANEL |
| 3 | R71201670 | 1 | INNER DOOR GLASS |
| 4 | R70044310 | 1 | GASKET FOR TROLLEY(0,7MT) |
| 5 | R58001760 | 2 | INNER GLASS SOLID HINGE |
| 6 | R58001770 | 2 | INNER GLASS HINGE PIN |
| 7 | R58001780 | 2 | INNER GLASS CATCH KIT |
| 8 | R11411860 | 2 | "C" PROFILE |
| 9 | R11205390 | 1 | LOWER DOOR HINGE WITH RETAINER |
| 10 | R58002540 | 1 | DOOR PIVOT SUNK KEY |
| 11 | R58002550 | 1 | DOOR RETAINER GUIDE SHOE |
| 12 | R58002560 | 1 | SCREW FOR LOWER DOOR HINGE |
| 13 | R58002570 | 1 | WASHER Ø 30/15x3 |
| 14 | R61620091 | 16 | BELLEVILLE WASHER Ø 14/6.4 |
| 15 | R11200560 | 1 | UPPER DOOR HINGE |
| 16 | R58002150 | 1 | HINGE PIN |
| 17 | R58004050 | 1 | NUT FOR UPPER DOOR HINGE |
| 18 | R11411520 | 1 | UPPER SQUARE FOR DOOR ROD |
| 19 | R11205400 | 1 | LOWER SQUARE FOR DOOR ROD |
| 20 | R10207680 | 2 | DOOR ROD ADJUSTABLE PLATE |
| 21 | R70050100 | 9 | GLASS SILICON SPACERS |
| 22 | R70044170 | 1 | GLASS GASKET (3,72MT) |

| POS. | CODE | PIECES | DESCRIPTION |
|------|-----------|--------|--------------------------|
| 23 | R66110330 | 1 | DOOR LAMPS CABLE SET |
| 24 | R11401440 | 2 | LAMP COVER |
| 25 | R71500150 | 2 | GLASS LAMP |
| 26 | R70044200 | 2 | GLASS LAMP |
| 27 | R11401450 | 2 | GLASS HOLDER LAMP FLANGE |
| 28 | R65270020 | 2 | LIGHT 20W 12V G4 |
| 29 | R65270450 | 2 | LIGHT SOCKET |
| 30 | R65260750 | 1 | LAMPS CONTACT BLOCK |
| 31 | R66110300 | 1 | LAMPS CONTACT CABLE SET |
| 32 | R11100310 | 1 | DOOR HANDLE ASSEMBLY |
| 33 | R61090052 | 1 | GRUB SCREW M6x16 |
| 34 | R69010600 | 1 | DOOR HANDLE |
| 35 | R69010610 | 1 | HANDLE |
| 36 | R61030601 | 1 | CYLINDRICAL HEAD SCREW |
| 37 | R11205340 | 1 | DOOR HANDLE PIN |
| 38 | R03200970 | 1 | DOOR LOCK REAR FLANGE |
| 39 | R58004781 | 1 | DOOR HANDLE HOOK |
| 40 | R61040272 | 1 | DOOR HANDLE HOOK SCREW |
| 41 | R61420021 | 1 | ELASTIC WASHER |
| 42 | R11205381 | 1 | LOWER DOOR ROD |
| 43 | R11205370 | 1 | UPPER DOOR ROD |



| POS. | CODE | PIECES | DESCRIPTION |
|------|------------|--------|--|
| 1 | R58003840 | 2 | MOTOR GASKET BRASS FLANGE |
| 2 | R58003850 | 2 | MOTOR GASKET BRASS COUNTER FLANGE |
| 3 | R58004000 | 2 | FAN SCREW M12x1.5 SX |
| 4 | R58004010 | 2 | FAN WASHER Ø 30/12.5 |
| 5 | R61020562 | 2 | FAN SCREW TE A2 M6x55 |
| 6 | *R65040061 | 2 | MOTOR HP 1 KIT |
| 7 | R65060050 | 2 | COMPONENTS VENTILATION MOTOR Ø 120 |
| 8 | R65070350 | 1 | CHAMBER SAFETY THERMOSTAT |
| 9 | R65070081 | 1 | STEAM GENERATOR SAFETY THERMOSTAT |
| 10 | R65110200 | 1 | SOLENOID VALVE 220V 50HZ |
| 11 | R65110210 | 1 | SOLENOID VALVE 220V 50HZ WITH FLOW REDUCER |
| 12 | R65110510 | 2 | 15 LT/H WATER FLOW REDUCER |
| 13 | *R65140380 | 2 | CONTACTOR 3RT1016-1AP02 240V |
| 14 | *R65140400 | 8 | CONTACTOR 3RT1025-1AL20 240V |
| 15 | *R65160620 | 2 | THERMIC PROTECTION 3RU1116-1BB0 1,4-2,0A |
| 16 | R65180420 | 1 | TRANSFORMER 20VA |
| 17 | R65180430 | 1 | TRANSFORMER 40VA |
| 18 | R65200200 | 1 | FUSE 2A |
| 19 | R65200320 | 1 | FUSE 0.25A (T) |

| POS. | CODE | PIECES | DESCRIPTION |
|------|------------|--------|---------------------------------|
| 20 | R65200080 | 1 | FUSE 0.125A (T) |
| 21 | R65210020 | 3 | FUSE CARRIER |
| 22 | R65220130 | 1 | TERMINAL BOARD |
| 23 | R65265100 | 1 | DOOR SWITCH |
| 24 | *R65280200 | 3 | INTERFERENCE SUPPRESSOR |
| 25 | *R65280450 | 1 | FERRITE |
| 26 | R65325000 | 2 | PROBE PT100 (1,5 MT LONG) |
| 27 | R65325010 | 1 | PROBE PT100 (3 MT LONG) |
| 28 | R70020050 | 2 | MOTOR GASKET |
| 29 | *R75400440 | 2 | FAN Ø 350x114/12 50HZ P.D. KIT |
| 30 | *R65140430 | 2 | AUX.CONTACT 1L+1R 3RH1921-1FA11 |

*COMPONENT SUBMITTED TO CHANGEMENTS CAUSED BY TENSION DIFFERENT FROM THE STANDARD [3N AC400V 50HZ]

