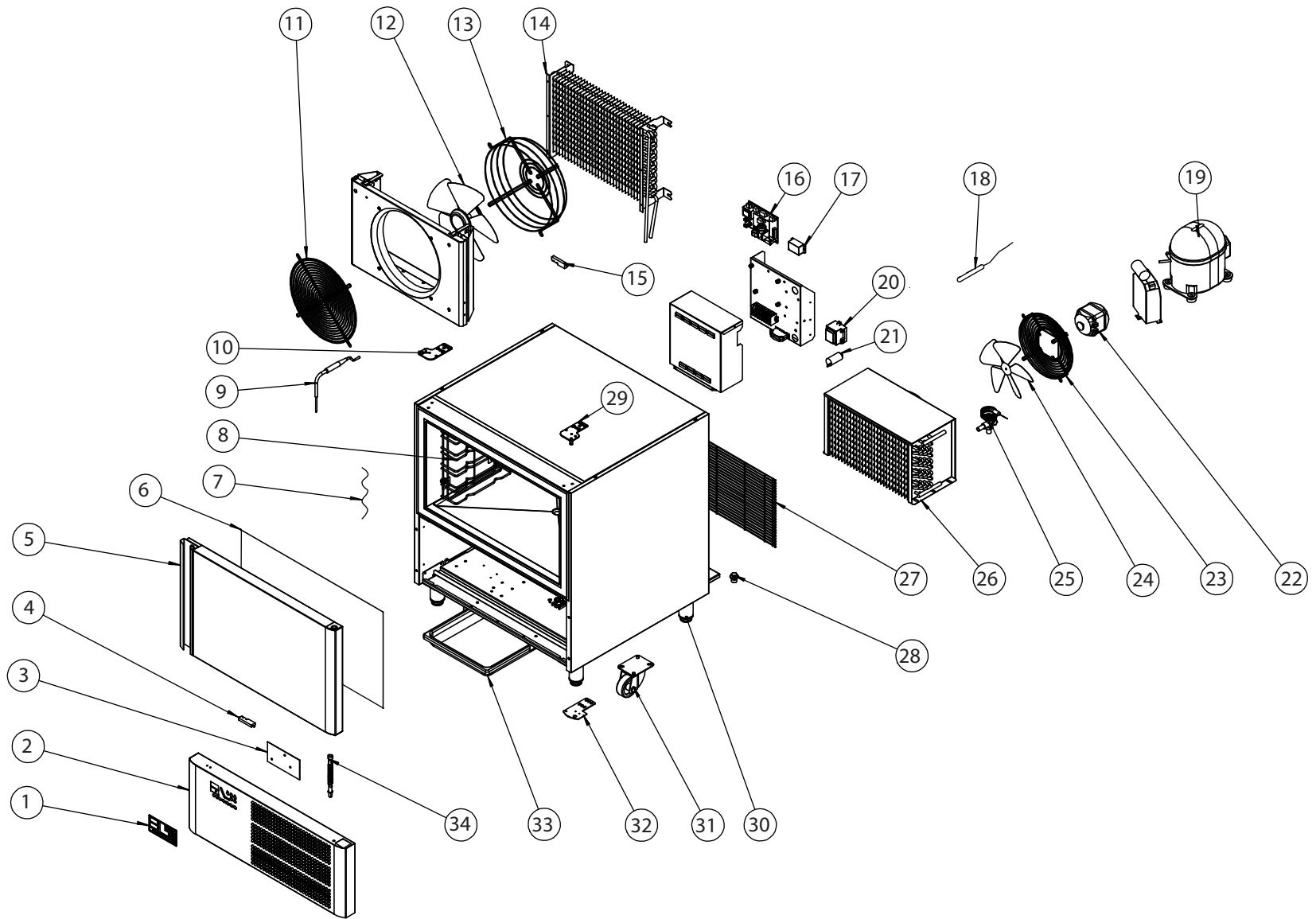


MODEL: ABV3053



NR	COD	ITALIANO	ENGLISH	FRANCAIS	DEUTSCHE
1	33802	MEMBRANA COMANDI ABBATTITORI SIMPLY	CONTROL PLATE FOR SIMPLY	Plaque de controle	Bedienfeld Schockfroster Simply
3	33807	SCHEDA EASY 5T (ABB. SIMPLY)	POWER BOARD EASY 5 BACS BLAST CHILLER (SIMPLY)	Fiche easy 5T (ab. Simply)	Platine Easy 5T (Schockfroster Simply)
4	18762	SENSORE MAGNETICO N.O. 100W	Magnetic sensor	Capteur magnétique	Magnetsensor
5	34567	ASS. PORTA ABB. 3T	DOOR ASSEMBLY, 3 BACS BLAST CHILLER	Ass. Porte ab. 3T	Tür Schockfroster 3T
6	34574	GUARNIZIONE PORTA ABB. 3T	Door gasket, 3 T Blast chiller	Joint porte ab. 3T	Türdichtung Schockfroster 3T
7	29789	RESISTENZA STIPITE L=3300 (L.Z.CALDA=230	Door heating element	Résistance montant	Türrahmeneizung
8	34594	PORTAGRIGLIE ABB. 3T	TRAYS SUPPORT 3 BACS BLAST CHILLER	Porte grilles ab. 3T	Rosthalter Schockfroster 3T
9	31928	SONDA SPILLONE L=3 MT	Core probe	Sonde de produit	Kerntemperaturfühler
11	34595	GRIGLIA PROTEZIONE VENTILATORE ø 250	VENTILATOR PROTECTION GRID ø 250	Grille protection ventilateur ø 250	Schutzgitter Ventilator ø 250
12	31316	MOTOVENTILATORE A2E250-AL06-09	Ventilator	Moteur	Ventilator
13	34596	GRIGLIA SUPPORTO VENTILATORE ø 250	VENTILATOR SUPPORT GRID ø 250	Grille support ventilateur ø 250	Haltegitter Ventilator ø 251
14	34581	EVAPORATORE 11 T 3R 450 P5 2 CIRCUITI	EVAPORATOR 11 T 3R 450 P5 2 CIRCUITS	évaporateur 11 T 3R 450 P5 2 circuits	Verdampfer 11 T 3R 450 P5 2 Kreisläufe
15	30458	SENSORE MAGNETICO F800 1B DA 0 097 10W	Magnetic sensor	Capteur magnétique	Magnetsensor
17	26510	RELE' DI POTENZA FINDER 62.82 230V	Relays	Relais	Relais
18	29799	SONDA TEMPERATURA PTC Lunghezza Cavo L=1	Temperature sensor cabinet/evaporator	Sonde temperat. Chambre/evap.	Temperaturfühler
19	34593	COMPRESSORE ACC. MPT14LA 230/50	COMPRESSOR MPT14LA 230/50	Compresseur ac. MPT14La 230/50	Kompressor Acc. MPT14LA 230/50
21	31312	CONDENSATORE ELETTRICO 3uF	Condenser	Condenseur	Kondensator 240 A
22	29744	MOTOVENT. M4Q 045-EA01-01 (25W) ZIEHL	Ventilator	Moteur	Ventilator
23	30329	GRIGLIA CONDENSATORE 9906	Fan protection grid	Grille de protection	Schutzgitter
24	18640	VENTOLA VA D.230-28 A 73811-2-3634	Fan	Hélice	Ventil
25	34658	VALV. TERMOSTATICA TS2	EXPANSION VALVE TS2	Valve thermostatique TS2	Thermostatventil TS2
26	30850	CONDENSATORE 4R 320A 10T P.A. 3,6	Condenser	Condenseur	Kondensator
27	29738	GRIGLIA POSTERIORE ABBATTITORE 5 T	Transformer	Transformateur	Transformator
29	29133	ASS.CERNIERA SUPERIORE DX TAR	TOP RH HINGE ASSEMBLY FOR REFRIGERATED COUNTER	Ass. Charnière supérieure droite tar	rechtes oberes Scharnierset TAR
30	29795	PIEDE REGOL. INOX 1¼ C/PIASTRA H=100	Adjustable Foot	Pieds réglable	Edelstahlfuß
32	29760	ASSIEME CERNIERA INFER. ABB. 5T	Lower hinge	Charnière inferieure	Unteres Scharnierset
33	27754	ASS.BACINELLA POLISTIROLO ALIMENTARE	BASIN ASSEMBLY IN ALYMENTARY POLYSTYRENE	Ass. Bac en polystyrène alimentaire	Kunststoff Wasser-Behaelter
34	14841	ASS.MOLLA DX. TAV. REFR.	Right spring assembly	Ensemble ressort droit	Feder-Set rechts