

**Cocinas a Gas  
Fourneaux à Gaz  
Gas Ranges  
Cucine a Gas  
Fogões a Gás  
Gas-Herde**

**GAMA 700**

**Modelos:**

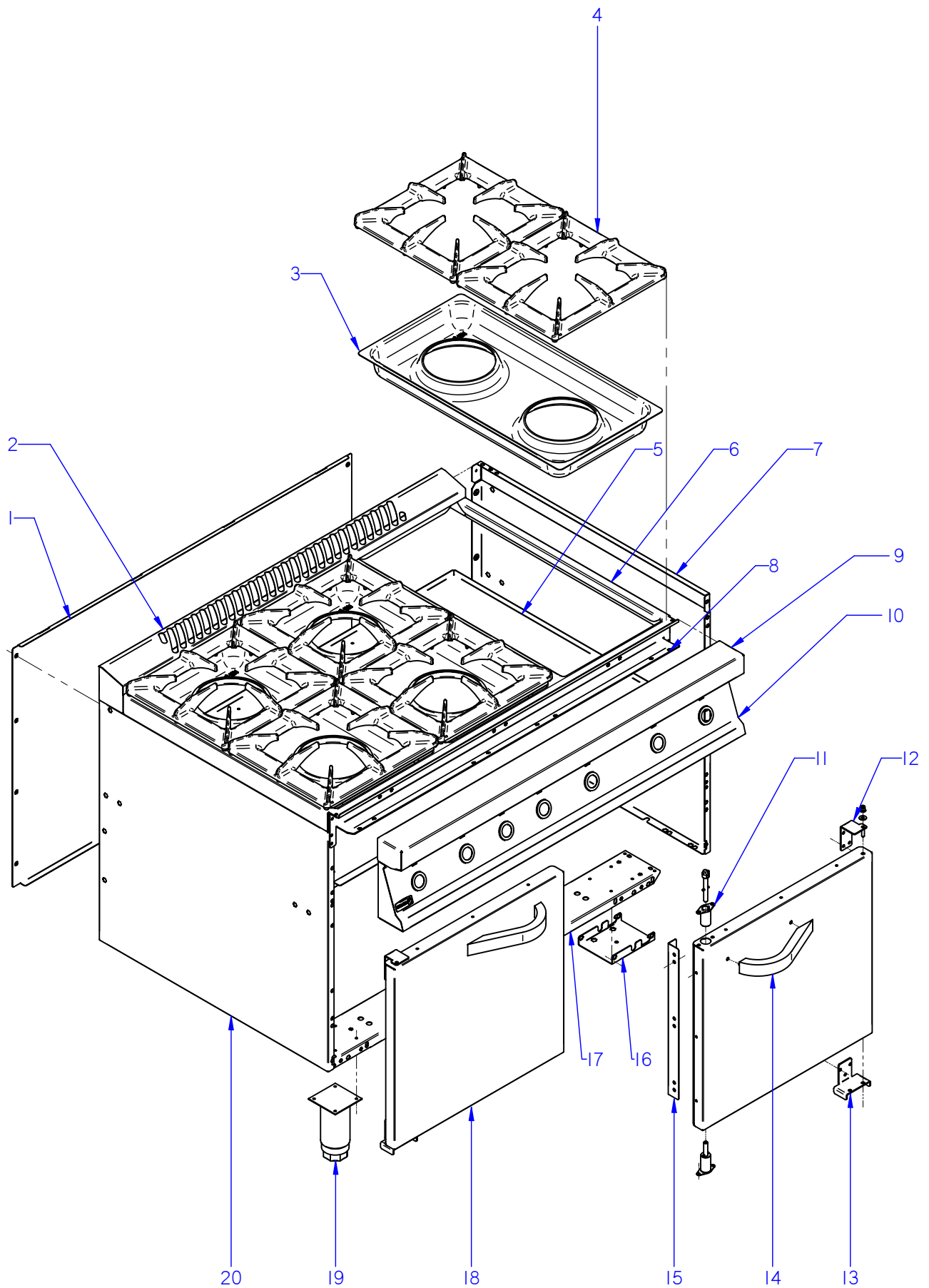
**CGB7-61  
CGB7-61H**

*Junio 2008 June*

*Revisado Mayo 2010*



**Fagor Industrial**



ITEM MARCADO EN COLOR = REPUESTO RECOMENDADO  
 COLOURED ITEM = RECOMMENDED SPARE PART

N plano	Firma	Fecha	Aparato	MUEBLE	Lamina	Fagor Industrial S.Coop. <b>FAGOR</b>
C-2070	<i>(Signature)</i>	2008-06	COCINA CGB7-61		1	Oñate

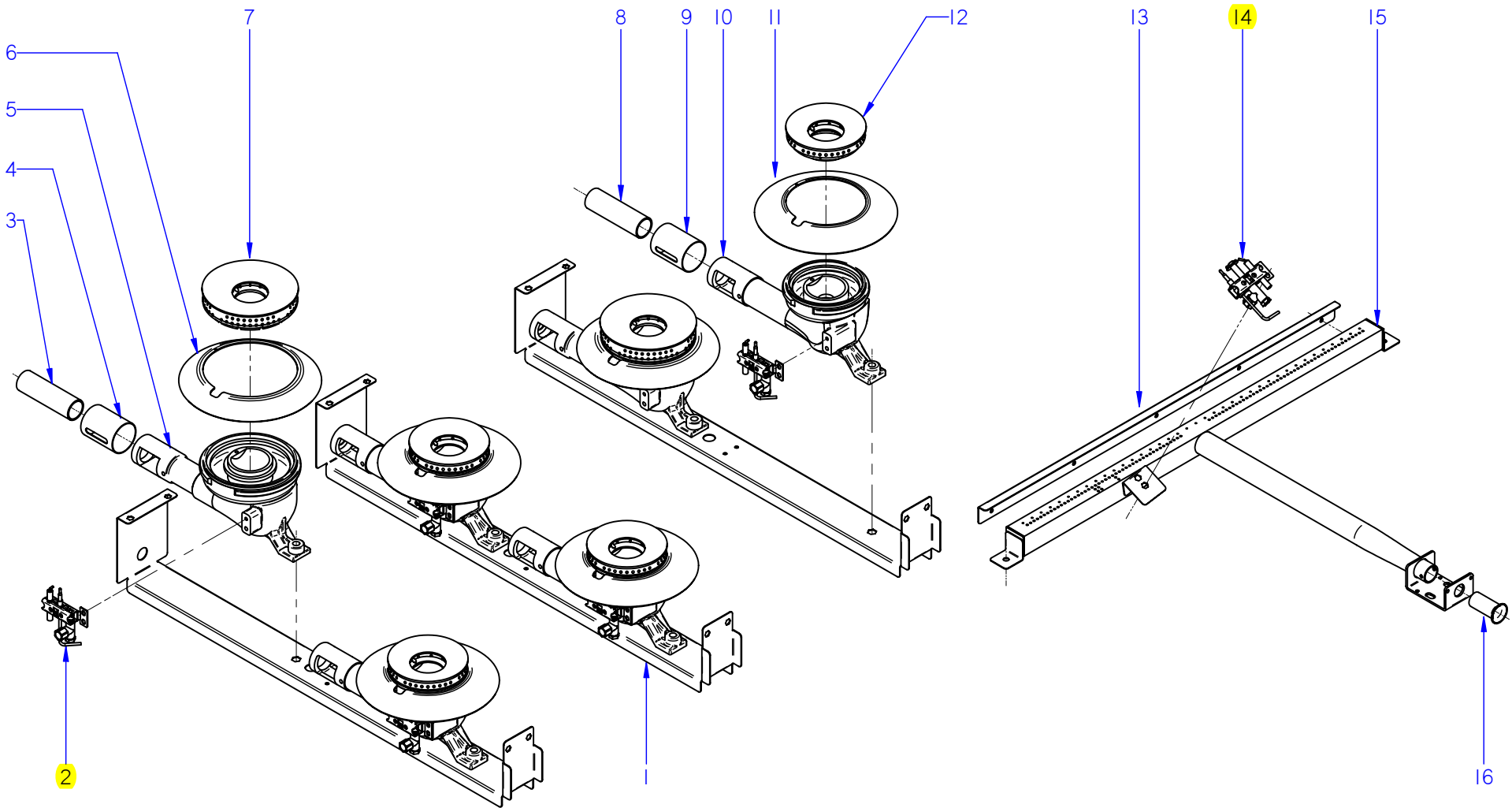
MOD.		COCINAS		ZONA	MUEBLE			PLANO	C-2070
ITEM	CODIGO	DENOMINACION	TEXTO	CGB7-61	CGB7-61 R				NOTAS
1	U912809000	PANEL POSTERIOR 1 1/2M G 700	REAR PANEL 1 1/2M G 700	1	1				
	Q419005000	REMACHE 4X8 ALMG3 / ALUMINIO	RIVET 4X8 ALMG3 / ALUMINIUM	8	8				
2	U915406000	EMBELLE CHIMENEA 1 1/2 G 700	FLUE PIPE TRIM 1 1/2 G 700	1	1				
3	U915407000	BACINETA QUEMADORES G 700	BASIN BURNERS G 700	3	3				
4	U915413000	PARRILLA DE MESA ( G 700 )	TABLE GRILL ( G 700 )	6	6				
5	U912604000	BASE RECOGE GRASAS 1 1/2M	GREASE COLLECTION BASE 1 1/2M	1	1				
	Q419005000	REMACHE 4X8 ALMG3 / ALUMINIO	RIVET 4X8 ALMG3 / ALUMINIUM	3	3				
6	U915405000	MESA COCINA 1 1/2M G 700	KITCHEN TABLE 1 1/2M G 700	1	1				
	Q152004000	TORNIL. APLASTADO M5X13 A 304	FLAT HEADED SCREW M5x13 A 304	4	4				
7	U912802000	PANEL LATERAL DCHO. G700	RIGHT SIDE PANEL G700	1	1				
	Q221342000	REMACHE EXAGONAL M5	HEXAGONAL RIVET M5	4	4				
	Q221343000	REMACHE EXAGONAL M6	HEXAGONAL RIVET M6	4	4				
	Q221343000	REMACHE EXAGONAL M6	HEXAGONAL RIVET M6	7	7				SISTEMA PUENTE
	Q012043000	TORNILL. EXAGONAL M6X20 A.304	HEXAGONAL BOLT M6X10 A.304	2	2				
	Q302022000	ARANDELA 16X6X1.2 A.304	WASHER 16X6X1.2 A.304	2	2				
8	U912603000	ESCUADRA AMARRE ANTERI 1 1/2	FRONT FAST. BRACKET 1 1/2	1	1				
	Q221342000	REMACHE EXAGONAL M5	HEXAGONAL RIVET M5	6	6				
	Q152004000	TORNIL. APLASTADO M5X13 A 304	FLAT HEADED SCREW M5x13 A 304	6	6				
9	U915402000	ANTERIOR MESA 1 1/2M G700	FRONT BENCH 1 1/2M G700	1	1				
	Q152004000	TORNIL. APLASTADO M5X13 A 304	FLAT HEADED SCREW M5x13 A 304	2	2				
10	U922803000	PORTAMANDOS COMPL. CGB-761	CONTROL HOLDER CGB-761	1	1				
	Q152004000	TORNIL. APLASTADO M5X13 A 304	FLAT HEADED SCREW M5x13 A 304	4	4				
	U912805000	ESCUDO FAGOR G700	FAGOR EMBLEM G700	1	1				
	Q221023000	CLIP SUJECIÓN RÁPIDA Ø5	RAPID CONNECT CLIP Ø5	2	2				
11	U060543000	CUERPO BLOQUEO RODILLO	ROLLER BLOCK BODY	2	2				
	U060544000	EJE ENGANCHE RODILLO	ROLLER ATTACHMENT SHAFT	2	2				
	U060527000	RODILLO FIJACION PUERTA	ROLLER DOOR FASTENING	2	2				
	Q371030000	RESORTE ELASTICO 3x18	ELASTIC SPRING 3x18	4	4				

MOD.		COCINAS		ZONA		MUEBLE				PLANO		C-2070	
ITEM	CODIGO	DENOMINACION	TEXTO	CGB7-61	CGB7-61 R							NOTAS	
12	U920502000	BISAGRA SUPERIOR DERECHA	UPPER RIGHT HINGE	1	1								
S/Nº	U920504000	BISAGRA SUPERIOR IZQUIERDA	UPPER LEFT HINGE	1	1								
	Q221343000	REMACHE EXAGONAL M6	HEXAGONAL RIVET M6	2	2								
	Q302022000	ARANDELA 16X6X1.2 A.304	WASHER 16X6X1.2 A.304	2	2								
	Q152004000	TORNIL. APLASTADO M5X13 A 304	FLAT HEADED SCREW M5x13 A 304	8	8								
	Q221342000	REMACHE EXAGONAL M5	HEXAGONAL RIVET M5	8	8								
13	U060525000	BISAGRA INFERIOR	LOWER HINGE	2	2								
	Q152004000	TORNIL. APLASTADO M5X13 A 304	FLAT HEADED SCREW M5x13 A 304	6	6								
	Q221342000	REMACHE EXAGONAL M5	HEXAGONAL RIVET M5	6	6								
14	U910506000	ASA ARMARIO COMPLETA G700	FULL CUPBOARD HANDLE G700	2	2								
	Q162040000	TUERCA EXAGONAL M6	HEXAGONAL NUT M6	4	4								
	Q232040000	ARANDELA A6	WASHER A6	4	4								
15	U060505000	ESCUADRA APERTURA PUERTA	BRACKET DOOR OPENING	1	1								
16	U549910000	SOPORTE RUEDAS	WHEEL SUPPORT	-	4								
	Q221344000	REMACHE EXAGONAL M8	HEXAGONAL RIVET M8	-	16								
	Q221343000	REMACHE EXAGONAL M6	HEXAGONAL RIVET M6	-	16								
	Q012043000	TORNILL. EXAGONAL M6X20 A.304	HEXAGONAL BOLT M6X10 A.304	-	16								
	Q232040000	ARANDELA A6	WASHER A6	-	16								
17	U912601000	LISTON SOPOR PATAS CG-761	LEG SUPPORT STRUT CG-761	2	2								
18	U920507000	PUERTA IZQUIERDA CGB7-61	LEFT DOOR CGB7-61	1	1								
	U920508000	CONTRAPUERTA IZQUIERDA	LEFT DOOR REVERSE	1	1								
S/Nº	U920505000	PUERTA DERECHA CGB7-61	RIGHT DOOR CGB7-61	1	1								
	U920506000	CONTRAPUERTA DERECHA	RIGHT DOOR REVERSE	1	1								
	Q412000000	REMACHE TUBULAR 4 x 8	TUBULAR RIVET 4 x 8	18	18								
19	X260151000	PATA REGULABLE	ADJUSTABLE LEG	4	-								
	Q411304000	REMACHE AVIBULB Ø 4,8	AVIBULB RIVET Ø 4.8	16	-								
S/Nº	U549912000	RUEDA GIR C/FRENO ARSA 666541	ROT. WHEEL WITH BRAKE ARSA	-	2								
S/Nº	U549914000	RUEDA FIJA ARSA 666521	FIXED WHEEL ARSA 666521	-	2								
	Q012053000	TORNILLO EXAGONAL M8X20 A304	HEXAGONAL BOLT M8X20 A304	-	16								
	Q262050000	ARANDELA GROW. A8 A.304	WASHER GROW. A8 A.304	-	16								



N plano	C-2071
Firma	
Fecha	2008-06
Aparato	COCINA CGB7-61
QUEMADORES	
Lamina	2
Fagor Industrial S. Coop. Omate	

ITEM MARCADO EN COLOR = REPUESTO RECOMENDADO  
 COLOURED ITEM = RECOMMENDED SPARE PART



MOD.		COCINAS		ZONA		QUEMADORES				PLANO	C-2071
ITEM	CODIGO	DENOMINACION	TEXTO	CGB7-61	CGB7-61H						NOTAS
1	U915408000	LISTON SOPOR. QUEMADOR G700	BURNER SUPPO. STRUT G700	3	3						
	Q221342000	REMACHE EXAGONAL M5	HEXAGONAL RIVET M5	12	12						
	Q152004000	TORNIL. APLASTADO M5X13 A304	FLAT HEADED BOLT M5x13 A304	12	12						
2	11U9121210	PILOTO COMPLETO	COMPLETE PILOT LIGHT	6	6						
S/Nº	X012126000	CUERPO SIN RACORD 901.210	BODY WITHOUT CONNECTION 9	6	6						SOLO EN VERSION BP
S/Nº	U442137000	INYECTOR Ø 0.4 GN	INJECTOR Ø 0.4 GN.	6	6						
S/Nº	U912107000	CABEZA PILOTO 1 LLAMA (G 700)	PILOT HEAD 1 FLAME (G 700)	6	6						
S/Nº	U442130000	AMARRE TRASERO PI 978.009	REAR FASTEN. PI 978.009	6	6						
S/Nº	X012116000	TORNILLO AMARRE 953.007	FASTENING BOLT 953.007	6	6						
S/Nº	X012122000	REGULADOR AIRE 912.001	AIR CONTROL 912.001	6	6						
S/Nº	U442131000	AMARRE DELANTERO PI 978.021	FRONT FASTENING PI 978.021	6	6						
S/Nº	U442136000	CUERPO SIN RACORD (INY. Ø 0.4)	BODY WITHOUT CONNECTION 9	6	6						SOLO EN VERSION GN
S/Nº	U442133000	RACORD BICONO 4 958.030	BICONE CONNECTION 4,958.030	6	6						ELIMINADO 11.06.08
3	U565700000	VENTURI QUEMADOR 8000	VENTURI BURNER 8000	2	6						
	R422400000	TOBERA DE Ø 1.25 B.P.	NOZZLE Ø 1.25 B.P.	2	6						
	U912401000	TOBERA DE Ø 1.95 G.N.	NOZZLE Ø 1.95 G.N.	2	6						
4	U265702000	REGULADOR AIRE	AIR CONTROLLER	2	6						
5	U915702000	CUERPO QUEMADOR 7000 Kcal/h	BURNER BODY 7000 Kcal/h	2	6						
	Q132054000	VARILLA ROSCADA M6 x 12	THREADED ROD M6 x 12	2	6						
	Q162040000	TUERCA EXAGONAL M6	HEXAGONAL NUT M6	2	6						
6	U915703000	PROTEC. PILOTO QUEMAD. 7000	BURNER PILOT GUARD 7000	2	6						
	Q012045000	TORNILLO EXAGONAL M6X30 A.304	HEXAGONAL BOLT M6X30 A.304	2	6						
	Q302022000	ARANDELA 16X6X1.2 A.304	WASHER 16X6X1.2 A.304	2	6						
7	U135702500	QUEMADOR 8000 MESA	BURNER 8000 BENCH	2	6						
	Q371026000	MANGUITO SUJEC. 4X14 DIN1481	HOSE FASTENING 4X14 ØIN1481	2	6						
	Q131511000	VARILLA ROSCADA M3x8 DIN 913	THREADED ROD M3x8 DIN 913	2	6						
8	U125720000	VENTURI QUEMADOR 4000 kcl	VENTURI BURNER 4000 kcl	4	-						
	X312400000	TOBERA DE Ø 1.10 B.P.	NOZZLE Ø 1.10 B.P.	4	-						ELIMINADO 24.09.09
	U122407000	TOBERA DE Ø 1.05 B.P.	NOZZLE Ø 1.05 B.P.	4	-						INTRODUCIDO 24.09.09
	R302400000	TOBERA DE Ø 1.65 G.N.	NOZZLE Ø 1.65 G.N.	4	-						
9	U265702000	REGULADOR AIRE	AIR CONTROLLER	4	-						

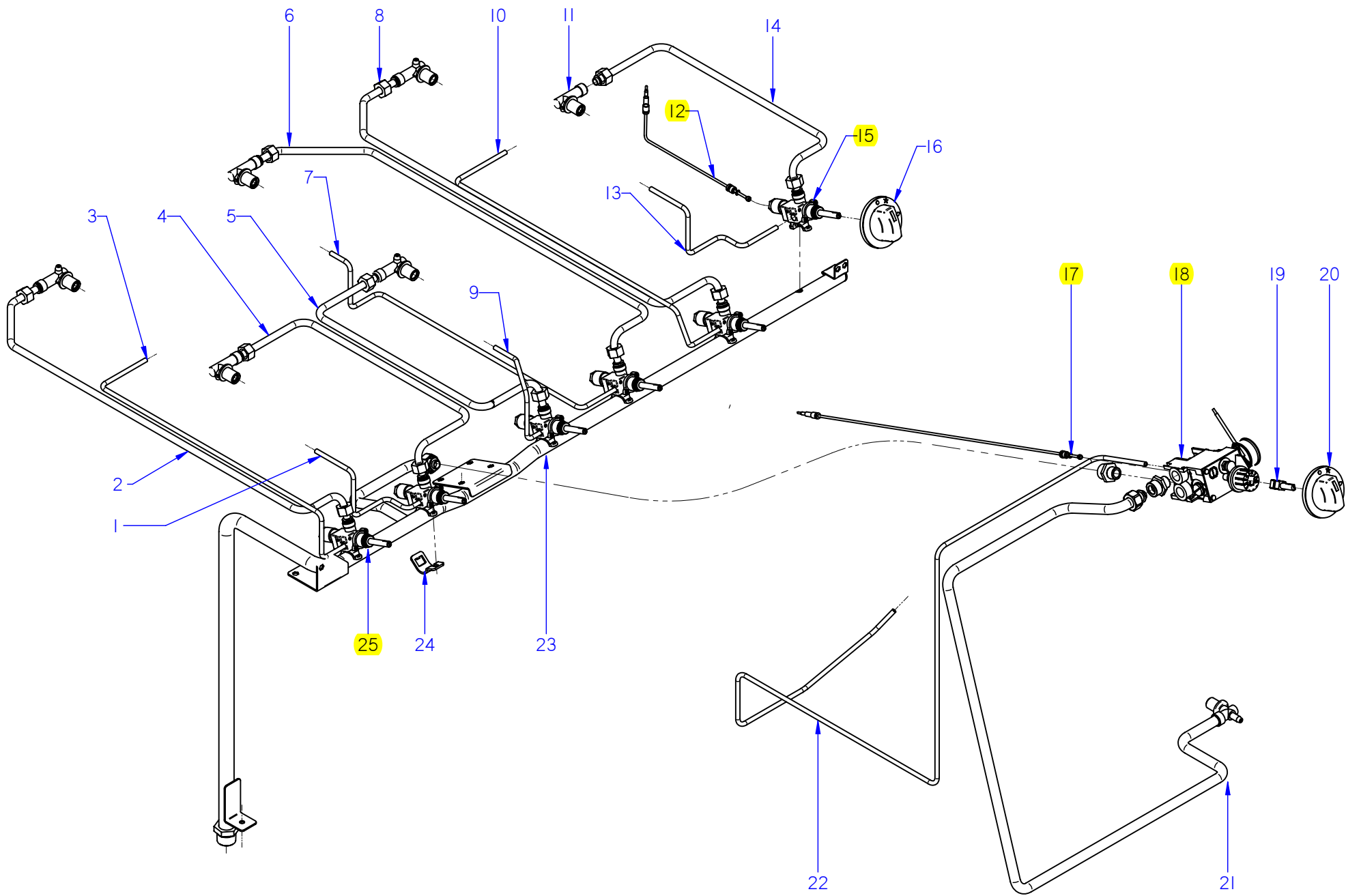




N plano	C-2072
Firma	
Fecha	2008-06
Aparato	COCINA CGB7-61
Lamina	3
Fagor Industrial S. Coop. Omate	

CONDUCIONES Y GRIFOS

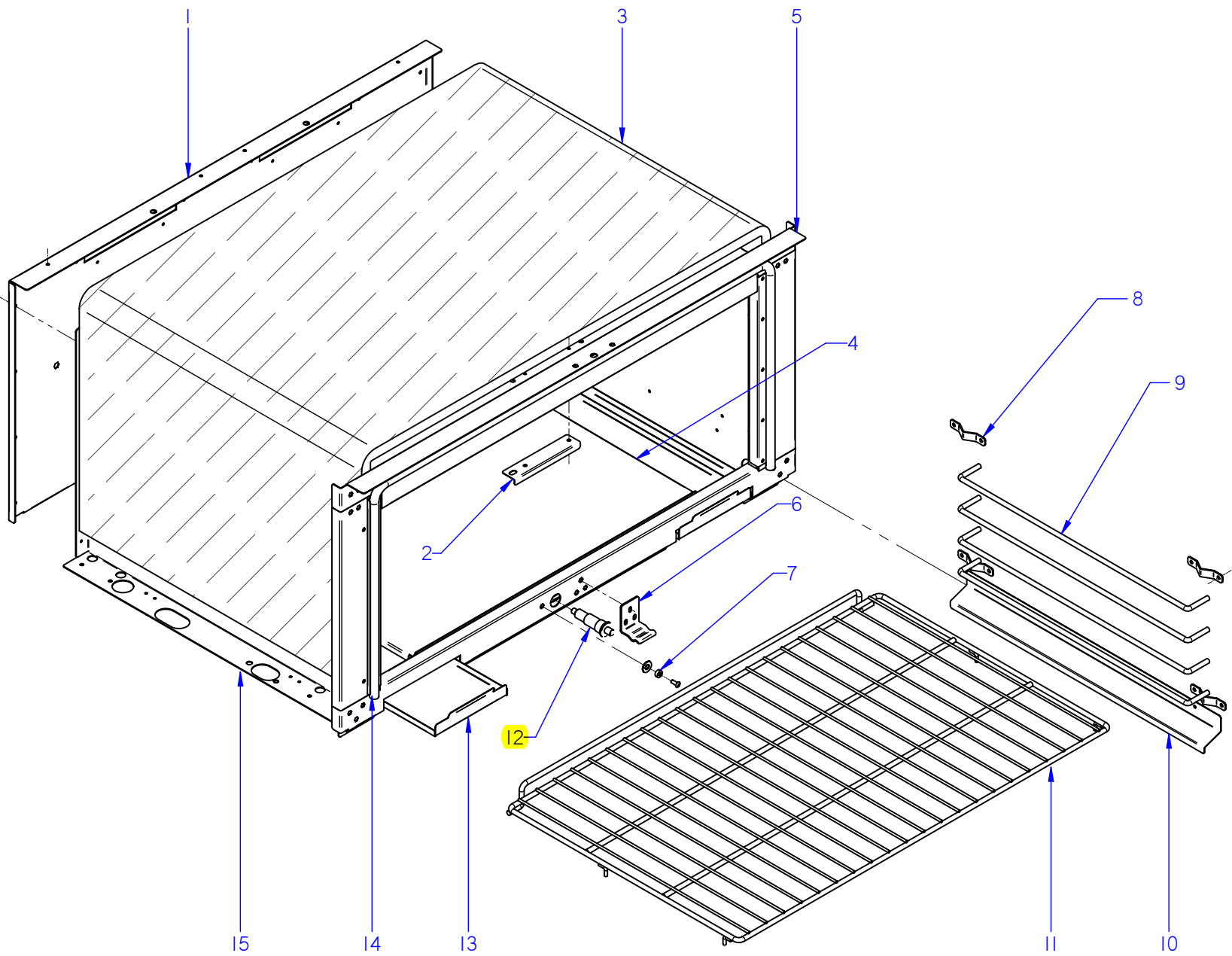
**ITEM MARCADO EN COLOR = REPUESTO RECOMENDADO  
COLOURED ITEM = RECOMMENDED SPARE PART**



MOD.		COCINAS		ZONA	CONDUCCIONES Y GRIFOS				PLANO	C-2072
ITEM	CODIGO	DENOMINACION	TEXTO	CGB7-61	CGB7-61H					NOTAS
1	U915022000	TUBO PILOTO ANTERIOR IZD G700	LEFT FRONT PILOT PIPE G700	1	1					
	U134323000	RACORD BICONO 6 958.031	BICONE CONNECTION 6 958.031	2	2					
2	U915010000	TUBO POSTERIOR IZQUIER. G700	LEFT REAR PIPE G700	1	1					
	Q306062000	ARANDELA Ø13,9X10,33x1,5	WASHER Ø13.9X10.33x1.5	2	2					
3	U915021000	TUBO PILOTO POSTERIOR IZDO.	LEFT REAR PILOT PIPE	1	1					
	U134323000	RACORD BICONO 6 958.031	BICONE CONNECTION 6 958.031	2	2					
4	U915016000	TUBO ANTERIOR IZQUIERDO G700	LEFT FRONT PIPE G700	1	1					
	Q306062000	ARANDELA Ø13,9X10,33x1,5	WASHER Ø13.9X10.33x1.5	2	2					
5	U915025000	TUBO ANTERIOR CENTRAL G700	CENTRAL FRONT PIPE G700	1	1					
	Q306062000	ARANDELA Ø13,9X10,33x1,5	WASHER Ø13.9X10.33x1.5	2	2					
6	U915027000	TUBO POSTERIOR CENTRAL G700	CENTRAL REAR PIPE G700	1	1					
	Q306062000	ARANDELA Ø13,9X10,33x1,5	WASHER Ø13.9X10.33x1.5	2	2					
7	U915029000	TUBO PILOTO POSTER. CENTRAL	REAR PILOT PIPE CENTRAL	1	1					
	U134323000	RACORD BICONO 6 958.031	BICONE CONNECTION 6 958.031	2	2					
8	U925001000	TUBO POSTERIOR DCHO CG7-61	RIGHT REAR PIPE G700	1	1					
	Q306062000	ARANDELA Ø13,9X10,33x1,5	WASHER Ø13.9X10.33x1.5	2	2					
9	U915009000	TUBO PILOTO ANTERIOR CENTR.	CENTRAL FRONT PILOT PIPE	1	1					
	U134323000	RACORD BICONO 6 958.031	BICONE CONNECTION 6 958.031	2	2					
10	U915023000	TUBO PILOTO POSTERIOR DCHO.	RIGHT REAR PILOT PIPE	1	1					
	U134323000	RACORD BICONO 6 958.031	BICONE CONNECTION 6 958.031	2	2					
11	U915014000	PORTATOVERAS HORNO	OVEN NOZZLE HOLDER	6	6					
	Q153002000	TORNILLO TAPON	CAP BOLT	6	6					
	U565011000	TUERCA GUIA	GUIDE NUT	7	7					
12	U222130000	TERMOPAR L=600	THERMOCOUPLE L=600	6	6					
13	U915024000	TUBO PILOTO ANTERIOR DCHO	RIGHT FRONT PILOT PIPE	1	1					
	U134323000	RACORD BICONO 6 958.031	BICONE CONNECTION 6 958.031	2	2					
14	U915019000	TUBO ANTERIOR DERECHO G700	RIGHT FRONT PIPE G700	1	1					
	Q306062000	ARANDELA Ø13,9X10,33x1,5	WASHER Ø13.9X10.33x1.5	2	2					
15	U912101000	GRIFO VALVULA CPMM18700/821	VALVE TAP CPMM18700/821	4	-					
16	H122101000	BOTON DE MANDO Ø8 G700	CONTROL BUTTON Ø8 G700	6	6					
17	U742131000	TERMOPAR L=1500 M9	THERMOCOUPLE L=1500 M9	1	1					



ITEM MARCADO EN COLOR = REPUESTO RECOMENDADO  
 COLOURED ITEM = RECOMMENDED SPARE PART



MOD.	COCINAS		ZONA	HORNO				PLANO	C-2073
ITEM	CODIGO	DENOMINACION	TEXTO	CGB7-61					NOTAS
1	U925602000	POSTERIOR HORNO CGB7-61	OVEN REAR CGB7-61	1					
	Q412000000	REMACHE TUBULAR 4 x 8	TUBULAR RIVET 4 x 8	14					
2	U925620000	SOPORTE BULBO COMPLETO	COMPLETE BULB SUPPORT	1					
	Q412000000	REMACHE TUBULAR 4 x 8	TUBULAR RIVET 4 x 8	2					
3	U925618000	AISLANTE 1790x645x20	INSULATION 1790x645x20	1					
4	U065665000	SOLERA DE HORNO	OVEN BASE	1					
5	U925605000	MARCO DE HORNO CGB7-61	OVEN FRAME CGB7-61	1					
	Q152004000	TORNIL. APLASTADO M5X13 A 304	FLAT HEADED SCREW M5x13 A 304	4					
	Q302022000	ARANDELA 16X6X1.2 A.304	WASHER 16X6X1.2 A.304	6					
	Q012043000	TORNILL. EXAGONAL M6X20 A.304	HEXAGONAL BOLT M6X10 A.304	6					
6	U060540000	ESCUADRA FIJAC. INFER. PUERTA	BRACKET FASTENING LOWER D	1					
	Q152004000	TORNIL. APLASTADO M5X13 A 304	FLAT HEADED SCREW M5x13 A 304	3					
	Q221304000	REMACHE ROSCA NUTSERT M5	THREADED RIVET NUTSERT M5	3					
7	U065632000	CASQUILLO DISTANCIADOR	SPACER BUSHING	1					
	Q152004000	TORNIL. APLASTADO M5X13 A 304	FLAT HEADED SCREW M5x13 A 304	1					
	Q221304000	REMACHE ROSCA NUTSERT M5	THREADED RIVET NUTSERT M5	1					
	Q302022000	ARANDELA 16X6X1.2 A.304	WASHER 16X6X1.2 A.304	1					
8	U065613000	ESCUADRA SOP. LAT. PARRILLAS	GRILLE SIDE SUPPORT BRACKE	8					
	Q412000000	REMACHE TUBULAR 4 x 8	TUBULAR RIVET 4 x 8	16					
9	U925608000	CONJUNTO SOPORTE PARRILLAS	GRILLE SUPPORT UNIT	2					
	Q222042000	REMACHE EXAGONAL M6	HEXAGONAL RIVET M6	4					
	Q151336000	TORNILLO SOPORTE GUIAS	GUIDE SUPPORT BOLT	4					
	Q302022000	ARANDELA 16X6X1.2 A.304	WASHER 16X6X1.2 A.304	4					
10	U065605000	TEJADILLO LATERAL	SIDE COVER	2					
	Q412000000	REMACHE TUBULAR 4 x 8	TUBULAR RIVET 4 x 8	8					
11	U065624000	CONJUNTO DE PARRILLA	GRILLE UNIT	1					
12	S113034000	PIEZOELECTRICO	PIEZOELECTRIC	1					
13	U065607000	RECOGEGRASAS LATERAL	SIDE OIL COLLECTION TRAY	2					
14	U955615000	JUNTA PUERTA HORNO	OVEN DOOR SEAL	1					
	Q412000000	REMACHE TUBULAR 4 x 8	TUBULAR RIVET 4 x 8	19					
15	U925601000	CUERPO HORNO CGB7-61	OVEN BODY CGB7-61	1					

