

**Freidoras a gas**  
**Gas deep fat fryers**  
**Friteuses a gaz**  
**Gas-fritteusen**  
**Friggitrici a gas**  
**Fritadeiras a gás**

**GAMA 900**

**Modelos:**

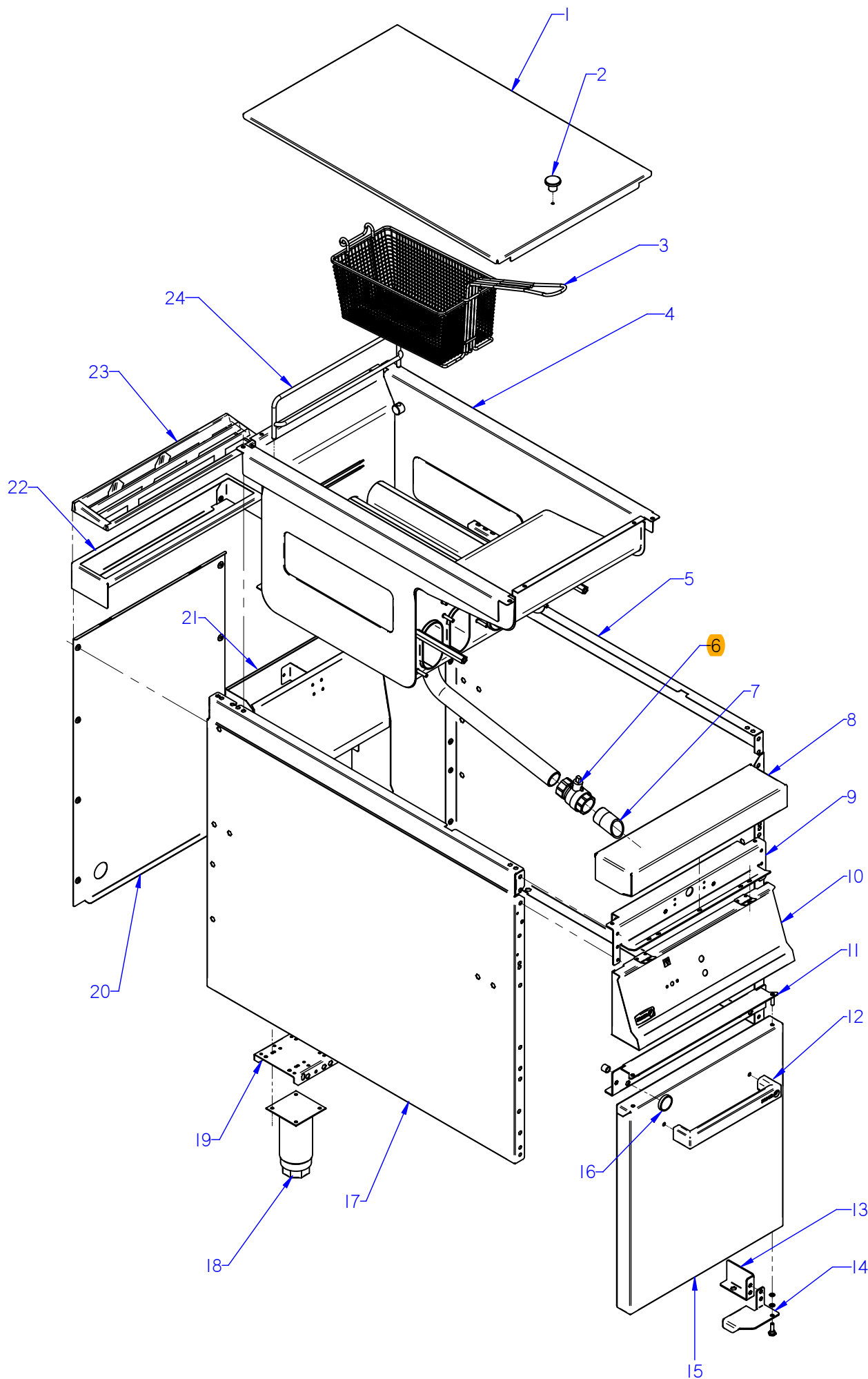
**FG9-05 AD**  
**FG9-10 AD**  
**FG9-05 S AD**

***Noviembre 2011 November***



---

FAGOR INDUSTRIAL



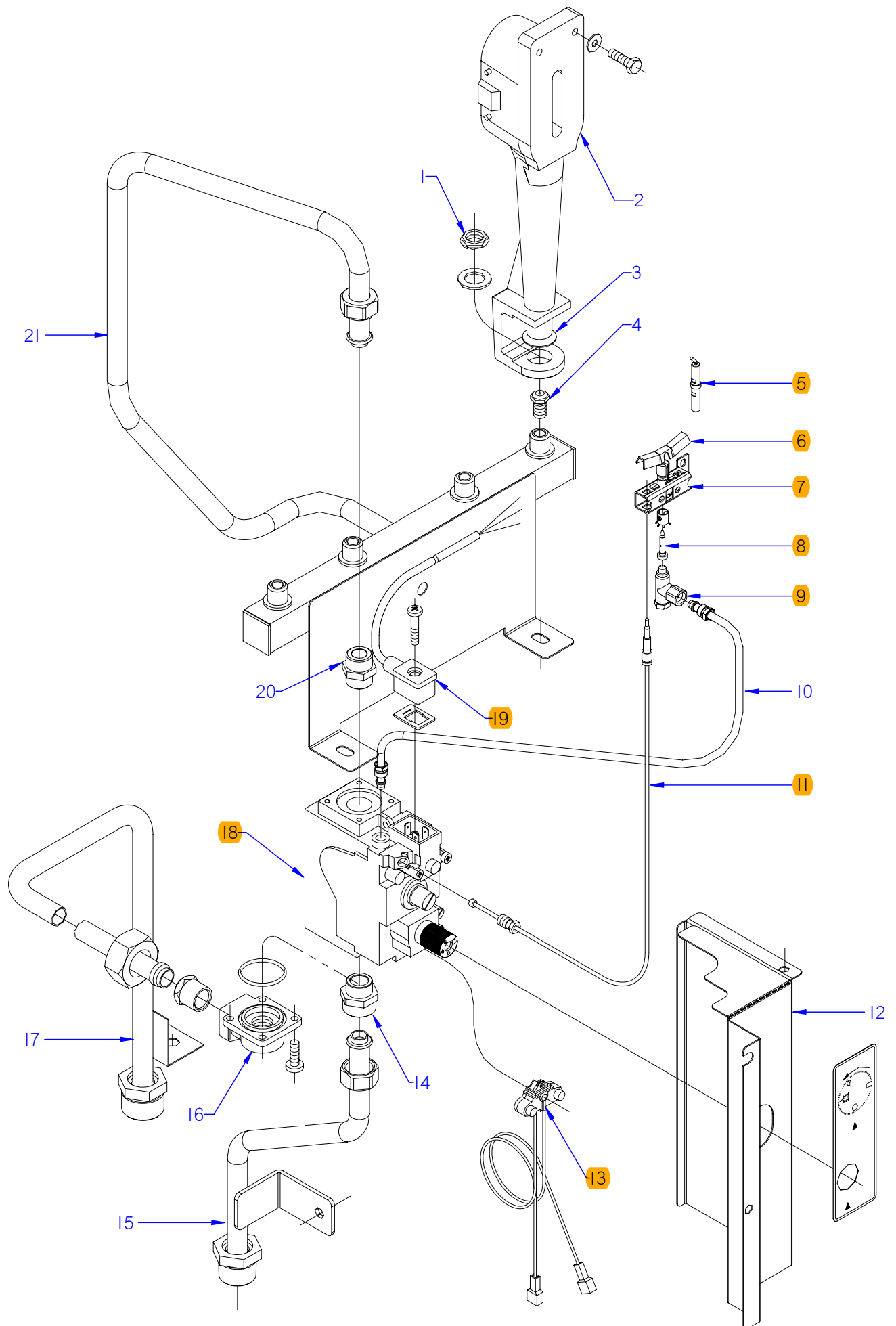
ITEM MARCADO EN COLOR = REPUESTO RECOMENDADO  
COLOURED ITEM = RECOMMENDED SPARE PART

Nº plano / N ° plane	Firma	Fecha / Date	Denominación / Denomination:	MUEBLE / FITTING	Lamina / Sheet	Fagor Industrial S.Coop. <b>FAGOR</b>
C-2915	<i>[Signature]</i>	2011-11	FREIDORAS FG9-05 AD / 10 AD		1	Oñate

MOD.		FREIDORAS / FRYERS	ZONA / ZONE	MUEBLE / FITTING								PLANO DIAGRAM		C-2915
ITEM	CODIGO REFERENCE	DENOMINACION	DENOMINATION	FG9-05 AD	FG9-05 S AD	FG9-10 AD						ELIMINADO ELIMINATED	INTRODUCID. INTRODUCED	NOTAS
1	X166144000	TAPA DE CUBA	COVER FG9-00	1	1	2								
2	X166154000	POMO PARA TAPA	COVER KNOB	1	1	2								
	Q152004000	TORNIL. APLASTADO M5X13 A 304	FLAT HEADED SCREW M5x13 A 304	2	2	2								
	Q302022000	ARANDELA 16X6X1.2 A.304	WASHER 16X6X1.2 A.304	1	1	2								
3	X166525000	CESTILLO PEQUEÑO G900	SMALL BASKET G900	2	2	4								
S/Nº	X166522000	REJILLA COMPLETA	COMPLETE GRILLE	1	1	2								
4	X166156000	CUBA COMPLETA	COMPLETE TUB FG9-05	1	1	2								
	Q012043000	TORNILLO EXAGONAL M6X20	HEXAGONAL BOLT M6X20	1	1	2								
	Q302022000	ARANDELA 16X6X1.2 A.304	WASHER 16X6X1.2 A.304	1	1	2								
	Q012032000	TORNILLO EXAGONAL M5X15	HEXAGONAL BOLT M5X15	6	6	12								
5	X162814000	PANEL LATERAL DERECHO G900	RIGHT SIDE PANEL G900	1	—	2								
5	S142806000	PANEL LATERAL DERECHO G900S	RIGHT SIDE PANEL G900S	—	1	—								
	Q221343000	REMACHE EXAGONAL M6	HEXAGONAL RIVET M6	4	4	8								
	Q221342000	REMACHE EXAGONAL M5	HEXAGONAL RIVET M5	6	6	12								
6	X036107000	VALVULA ESFERA PASO TOTAL 1	SPHERICAL VALVE TOTAL PASS	1	1	2								
7	X506129000	PUNTA DESAGÜE (CUBA LIMPIA)	DRAINAGE POINT (CLEAN TUB)	1	1	2								
8	U965415000	ANTERIOR MESA 0,5 M AD	BENCH FRONT 0.5 M AD	1	1	—								
8	S105403000	ANTERIOR MESA 1 M AD	BENCH FRONT 1 M AD	—	—	1								
	Q152004000	TORNIL. APLASTADO M5X13 A 304	FLAT HEADED SCREW M5x13 A 304	2	2	2								
	Q302022000	ARANDELA 16X6X1.2 A.304	WASHER 16X6X1.2 A.304	1	1	1								
9	R042611000	ESCUA INTER AMAR ANTE 0,5 M	BRACKET INTER FASTE. FRONT	1	1	—								
9	U042610000	ESCUA INTER AMAR ANTE 1 M	BRACKET INTER FASTE. FRONT	—	—	1								
	Q221342000	REMACHE EXAGONAL M5	HEXAGONAL RIVET M5	3	3	6								
	Q012032000	TORNILLO EXAGONAL M5X15	HEXAGONAL BOLT M5X15	6	6	12								
	Q302022000	ARANDELA 16X6X1.2 A.304	WASHER 16X6X1.2 A.304	1	1	2								
	Q162040000	TUERCA EXAGONAL M6	HEXAGONAL NUT M6	2	2	4								
10	X502811000	PORTAMANDOS COMP. FG-905	CONTROL HOLDER FG-905	1	1	—								
10	X702811000	PORTAMANDOS COMP. FG-910	CONTROL HOLDER FG-910	—	—	1								
	Q152004000	TORNIL. APLASTADO M5X13 A 304	FLAT HEADED SCREW M5x13 A 304	2	2	2								
	U022836000	ESCUDO FAGOR	FAGOR EMBLEM	1	1	1								
	Q221023000	CLIP SUJECCIÓN RÁPIDA Ø5	RAPID CONNECT CLIP Ø5	2	2	2								

MOD.		FREIDORAS / FRYERS	ZONA / ZONE	MUEBLE / FITTING								PLANO DIAGRAM		C-2915
ITEM	CODIGO REFERENCE	DENOMINACION	DENOMINATION	FG9-05 AD	FG9-05 S AD	FG9-10 AD						ELIMINADO ELIMINATED	INTRODUCID. INTRODUCED	NOTAS
11	X162669000	LISTON BISAGRA SUPERIOR DCH.	UPPER RIGHT HINGE STRIP	1	1	1								
S/Nº	X172602000	LISTON BISAGRA SUPERIOR IZDO.	UPPER LEFT HINGE STRIP	—	—	1								
	Q221342000	REMACHE EXAGONAL M5	HEXAGONAL RIVET M5	6	6	12								
	Q152004000	TORNIL. APLASTADO M5X13 A 304	FLAT HEADED SCREW M5x13 A 304	2	2	4								
12	Z710558000	ASA CAPOTA AD	AD HOOD HANDLE	1	1	2								
	Q162040000	TUERCA EXAGONAL M6	HEXAGONAL NUT M6	2	2	4								
	Q302022000	ARANDELA 16X6X1.2 A.304	WASHER 16X6X1.2 A.304	2	2	4								
13	U020526000	ESCUADRA REFUERZO BISAG DE.	R. HINGE REINFORCE. BRACKET	1	—	1								
13	U020527000	ESCUADRA REFUERZO BISAG IZQ.	L. HINGE REINFORCE. BRACKET	—	—	1								
	Q221343000	REMACHE EXAGONAL M6	HEXAGONAL RIVET M6	1	—	1								
	Q221342000	REMACHE EXAGONAL M5	HEXAGONAL RIVET M5	2	—	2								
	Q152004000	TORNIL. APLASTADO M5X13 A 304	FLAT HEADED SCREW M5x13 A 304	2	—	2								
14	U020511000	BISAGRA DERECHA INFERIOR	LOWER RIGHT HINGE	1	—	1								
14	X190504000	BISAGRA DERECHA INFERIOR SUS	LOWER RIGHT HINGE S	—	1	—								
14	U020517000	BISAGRA IZQUIERDA INFERIOR	LEFT LOWER HINGE	—	—	1								
	X960504000	TORNILLO DE GIRO M8	ROTATION BOLT M8	1	1	2								
	Q232040000	ARANDELA A6	WASHER A6	2	2	4								
	Q232050000	ARANDELA A8	WASHER A8	2	2	4								
	Q221342000	REMACHE EXAGONAL M5	HEXAGONAL RIVET M5	2	—	4								
	Q012042000	TORNILLO EXAGONAL M6X15	HEXAGONAL BOLT M6X15	2	—	4								
	Q302022000	ARANDELA 16X6X1.2 A.304	WASHER 16X6X1.2 A.304	2	—	4								
15	U960501000	PUERTA LATERAL AD	SIDE DOOR AD	1	—	2								
15	U492803000	PUERTA LATERAL SUS AD	SIDE DOOR AD	—	1	—								
S/Nº	U020537000	CONTRAPUERTA LATERAL G900	SIDE DOOR REVERSE G900	1	—	2								
S/Nº	U020514000	CONTRAPUERTA LATE. SUS AD	SIDE DOOR REVERSE US AD	—	1	—								
	Q412000000	REMACHE TUBULAR 4X8	RIVET 4X8	4	4	8								
16	X960501000	IMAN	MAGNET	2	2	4								
S/Nº	X960502000	FIJACION IMAN	MAGNET ATTACHMENT	2	2	4								
	Q012021000	TORNILLO EXAGONAL M4X10	HEXAGONAL BOLT M4x10	2	2	4								
	Q232020000	ARANDELA A4	WASHER A4	2	2	4								

MOD.	FREIDORAS / FRYERS			ZONA / ZONE	MUEBLE / FITTING							PLANO DIAGRAM		C-2915
ITEM	CODIGO REFERENCE	DENOMINACION	DENOMINATION	FG9-05 AD	FG9-05 S AD	FG9-10 AD						ELIMINADO ELIMINATED	INTRODUCID. INTRODUCED	NOTAS
17	X162813000	PANEL LATERAL IZQUIERDO G900	LEFT SIDE PANEL G900	1	—	2								
17	S142805000	PANEL LATERAL IZQUIERD. G900S	LEFT SIDE PANEL G900S	—	1	—								
	Q221342000	REMACHE EXAGONAL M5	HEXAGONAL RIVET M5	6	6	12								
	Q221343000	REMACHE EXAGONAL M6	HEXAGONAL RIVET M6	4	4	8								
18	X260151000	PATA REGULABLE	ADJUSTABLE LEG	4	—	4								
	Q411304000	REMACHE AVIBULB Ø 4,8	AVIBULB RIVET Ø 4.8	16	—	16								
19	E052603000	LISTON SOPORTE PATAS 1/2 M AD	LEG SUPPORT STRIP 1/2 M AD	2	—	—								
19	X492611000	LISTON SOPORTE PATAS 1 M	LEG SUPPORT STRIP 1 M	—	—	2								
	Q012042000	TORNILLO EXAGONAL M6X15	HEXAGONAL BOLT M6X15	8	8	8								
	Q302022000	ARANDELA 16X6X1.2 A.304	WASHER 16X6X1.2 A.304	1	1	1								
S/Nº	X192808000	BASE INFERIOR COMPLETA	COMPLETE LOWER BASE	—	1	—								
S/Nº	X492612000	REFUERZO BASE INFERIOR SUSP.	SUSP. LOWER BASE REINFORCE	—	1	—								
	Q012041000	TORNILLO EXAGONAL M6X10	HEXAGONAL BOLT M6X10	—	2	—								
	Q302022000	ARANDELA 16X6X1.2 A.304	WASHER 16X6X1.2 A.304	—	1	—								
	Q221342000	REMACHE EXAGONAL M5	HEXAGONAL RIVET M5	—	2	—								
20	X492801000	PANEL POSTERIOR 0,5 M AD	REAR PANEL 0.5 M AD	1	—	—								
20	X492804000	PANEL POSTERIOR 0,5 M SUS AD	REAR PANEL 0.5 M SUS AD	—	1	—								
20	X492802000	PANEL POSTERIOR 1M AD	FRYER REAR PANEL1M AD	—	—	1								
	Q419005000	REMACHE 4X8 ALMG3 / ALUMINIO	RIVET 4X8 ALMG3 / ALUMINIUM	8	6	12								
21	X492601000	ANTERIOR CHIMENEA AD	FLUEPIPE FRONT AD	1	1	2								
S/Nº	X492609000	POSTERIOR CHIMENEA FG AD	FG REAR FLUE AD	1	1	2								
S/Nº	X492610000	DISTANCIADOR CHIMENEA AD	FLUEPIPE SPACER AD	1	1	2								
	Q221343000	REMACHE EXAGONAL M6	HEXAGONAL RIVET M6	2	2	4								
	Q012041000	TORNILLO EXAGONAL M6X10	HEXAGONAL BOLT M6X10	2	2	4								
	Q302022000	ARANDELA 16X6X1.2 A.304	WASHER 16X6X1.2 A.304	1	1	2								
	Q419005000	REMACHE 4X8 ALMG3 / ALUMINIO	RIVET 4X8 ALMG3 / ALUMINIUM	20	20	20								
22	R205438000	SOPORTE EMBELLECEDOR 1/2M	1/2M TRIM SUPPORT	1	1	2								
23	R205425000	EMBELLECEDOR ESMALTE	1/2M TRIM	1	1	2								
24	X166527000	SOPORTE COMPLETO CESTILLO	COMPLETE BASKET SUPPORT	1	1	1								



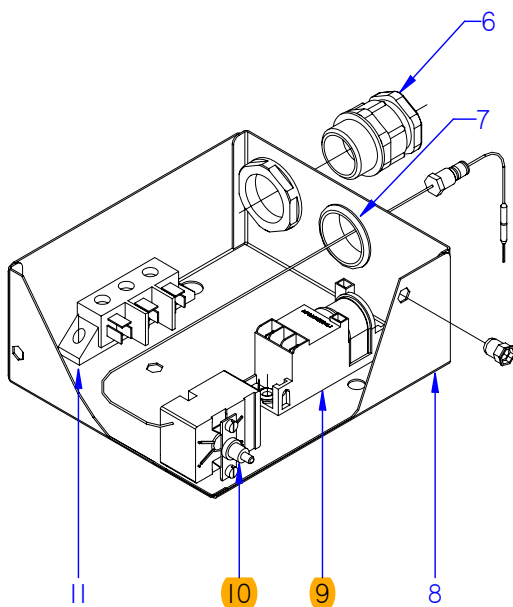
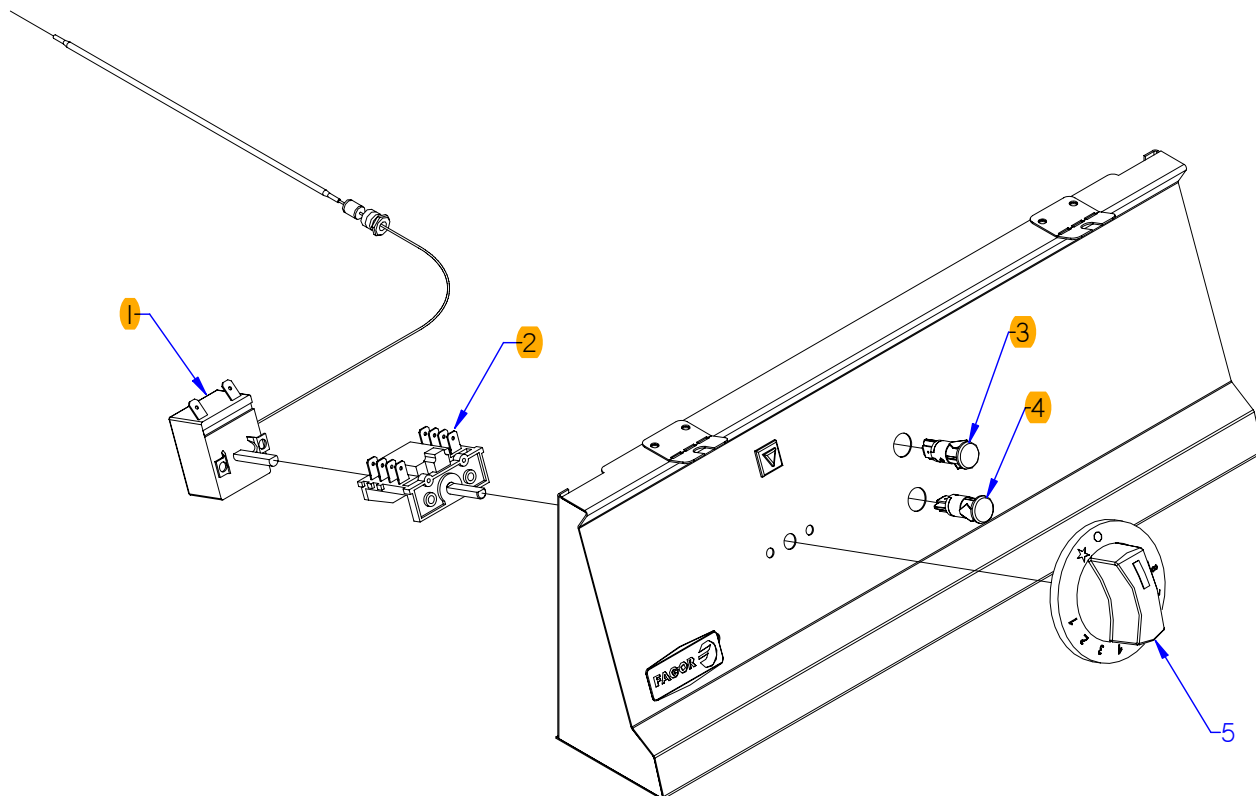
ITEM MARCADO EN COLOR = REPUESTO RECOMENDADO  
COLOURED ITEM = RECOMMENDED SPARE PART

Nº plano / N º plane	Firma	Fecha / Date	Denominación / Denomination:	Lamina / Sheet	Fagor Industrial S.Coop. <b>FAGOR</b>
C-2916	<i>[Signature]</i>	2011-11	PARTE FUNCIONAL GAS / FUNTIONAL PART GAS FREIDORAS FG9-05 AD / 10 AD	2	Oñate

MOD.		FREIDORAS / FRYERS	ZONA / ZONE	PARTE FUNCIONAL GAS / FUNCTIONAL PART GAS								PLANO DIAGRAM		C-2916
ITEM	CODIGO REFERENCE	DENOMINACION	DENOMINATION	FG9-05 AD	FG9-05 S AD	FG9-10 AD						ELIMINADO ELIMINATED	INTRODUCID. INTRODUCED	NOTAS
1	Q223021000	TUERCA EXAGONAL 15x1	HEXAGONAL NUT 15x1	4	4	8								
	Q301322000	ARANDELA PLANA 27x17x2	FLAT WASHER 27x17x2	4	4	8								
2	X015700000	QUEMADOR COMPLETO FG9-00	COMPLETE BURNER FG9-00	4	4	8								
	Q012043000	TORNILLO EXAGONAL M6x20 A304	HEXAGONAL BOLT M6x20 A304	8	8	16								
	Q302022000	ARANDELA 16x6x1,2 A.304	WASHER 16X6X1.2 A.304	8	8	16								
3	U325707000	REGULADOR DE AIRE	AIR REGULATOR	4	4	8								
	Q012031000	TORNILLO EXAGONAL M5X10 A304	HEXAGONAL BOLT M5x10 A304	4	4	8								
4	X162403000	TOBERA Ø 1,25 (BUTANO-PROP.)	NOZZLE Ø1.25 (BUT-PROP.)	4	4	8								
4	9429400000	TOBERA Ø 1,80 (GAS NATURAL)	NOZZLE Ø1.80 (GAS NATURAL)	4	4	8								
5	X012101000	BUJIA 915.037	SPARK PLUG 915.037	1	1	2								
6	X012117000	PILOTO	PILOT	1	1	2								
7	X012113000	AMARRE TRAS. PILOTO 978.003	REAR FASTENING PILOT 978.003	1	1	2								
S/Nº	X012114000	AMARRE DELANT. PILOTO 978.004	FRONT FASTENING PILOT 978.004	1	1	2								
S/Nº	X012122000	REGULADOR DE AIRE 912.001	AIR CONTROL 912.001	1	1	2								
8	U442137000	INYECTOR Ø 0.4 (GAS NATURAL)	NOZZLE Ø0.4 (GAS NATURAL)	1	1	2								
9	X012126000	CUERPO SIN RAC. 901.210	BODY WITHOUT CONNEC. 901.210	1	1	2								
	X012116000	TORNILLO AMARRE PILOTO	PILOT FASTENING BOLT	2	2	4								
10	X165068000	TUBO PILOTO COMPLE G900	COMPL PILOT PIPE FG-900	1	1	2								
11	U562130000	TERMOPAR L=850	THERMOCOUPLE L=850	1	1	2								
12	X492608000	PROT. ELECTROVALVULA AD	SOLENOID VALVE PROT. AD	1	1	2								
S/Nº	X162617000	PEGATINA POSICION MANDO	CONTROL POSITION STICKER	1	1	2								
	Q221342000	REMACHE EXAGONAL M5	HEXAGONAL RIVET M5	1	1	2								
	Q152004000	TORNIL. APLASTADO M5X13 A 304	FLAT HEADED SCREW M5x13 A 304	2	2	4								
13	R275027000	CABLEADO ELECTROSIT 927.012	WIRING ELECTROSIT 927.012	1	1	2								
14	S502106000	MANGUITO DOBLE 3/4"- 1/2"	DOUBLE SLEEVE 3/4"- 1/2"	1	1	2								
	Q306052000	ARANDELA Ø23,5x15,5x3	WASHER Ø23.5X15.5X3	1	1	2								
15	X165065000	TUBO ENTRADA GENERAL	COMPL GAS INPUT FG-900	1	—	2								
	Q152004000	TORNIL. APLASTADO M5X13 A 304	FLAT HEADED SCREW M5x13 A 304	2	—	4								
	Q221342000	REMACHE EXAGONAL M5	HEXAGONAL RIVET M5	5	—	10								
	Q306013000	ARANDELA PLANA Ø30.4X22.4X3	FLAT WASHER Ø30.4X22.4X3	1	—	2								
16	X153004000	CODO 1-2 820NOV 906.260	L-BEND	—	1	—								

[illegible]





ITEM MARCADO EN COLOR = REPUESTO RECOMENDADO  
COLOURED ITEM = RECOMMENDED SPARE PART

Nº plano / N ° plane	Firma	Fecha / Date	Denominación / Denomination: FUNCIONAL ELECTRICA / FUNCTIONAL ELECTRICAL	Lamina / Sheet	Fagor Industrial S.Coop. <b>FAGOR</b>
C-2917	<i>[Signature]</i>	2011-11	FREIDORAS FG9-05 AD / 10 AD	3	Oñate



[illegible]

