

**Freidoras  
Deep Fat Fryers  
Friteuses  
Friteusen  
Friggitrici**

**GAMA 700**

**Modelos:**

**FG-710**

**FG-720**

**FE-710**

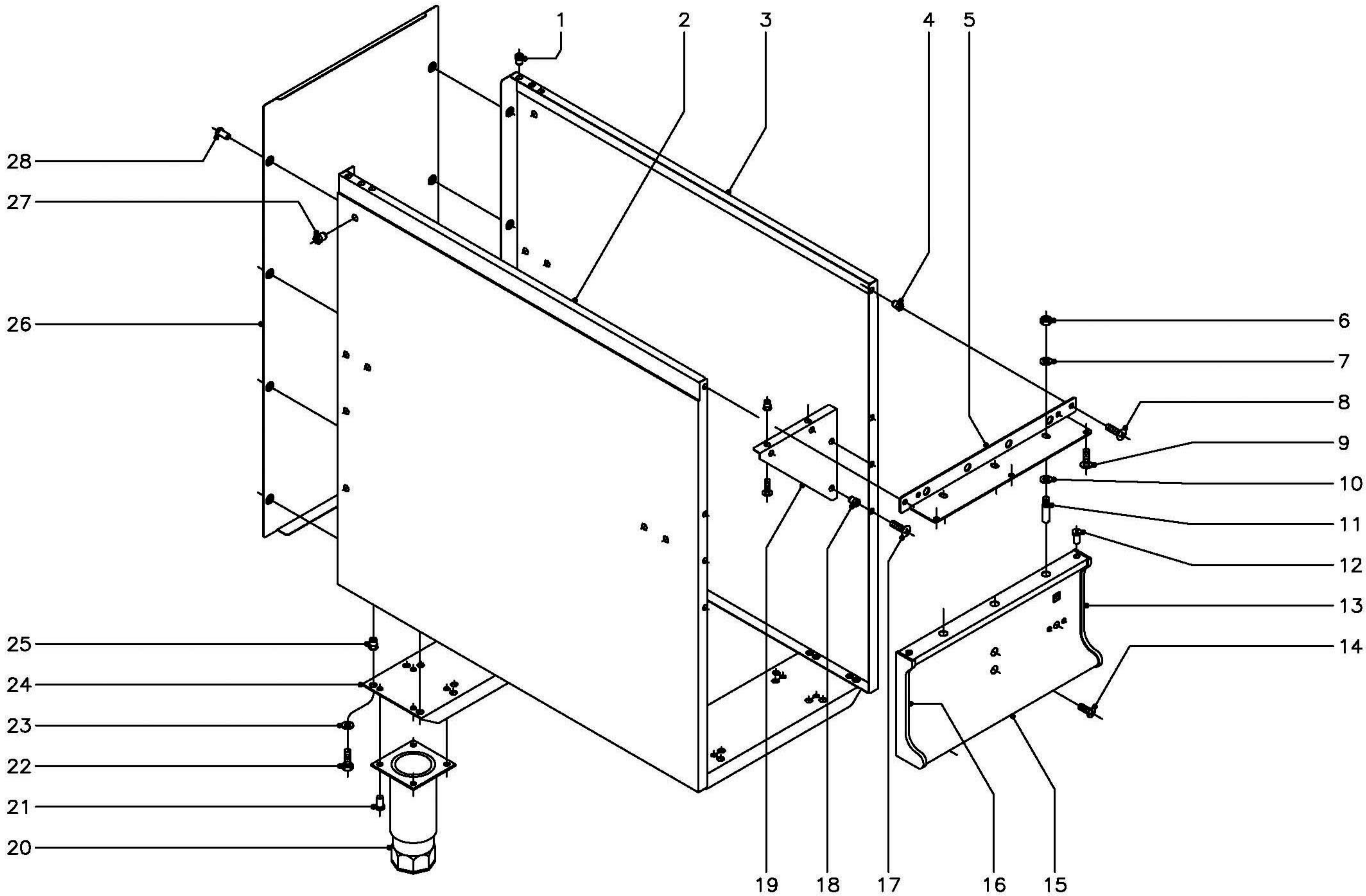
**FE-720**

*Septiembre 2003 September*

**FAGOR**



**Fagor Industrial**



|                   |           |                 |   |             |                                       |
|-------------------|-----------|-----------------|---|-------------|---------------------------------------|
| N plano<br>C-1422 | Firma<br> | Fecha<br>9-2003 | Aparato<br>MUEBLE<br>FREIDORAS GAMA 700 | Lamina<br>1 | Fagor Industrial S.Coop. <b>FAGOR</b> |
|                   |           |                 |   |             | Orate                                 |

MOD.

FREIDORAS MODULARES 700

ZONA

MUEBLE

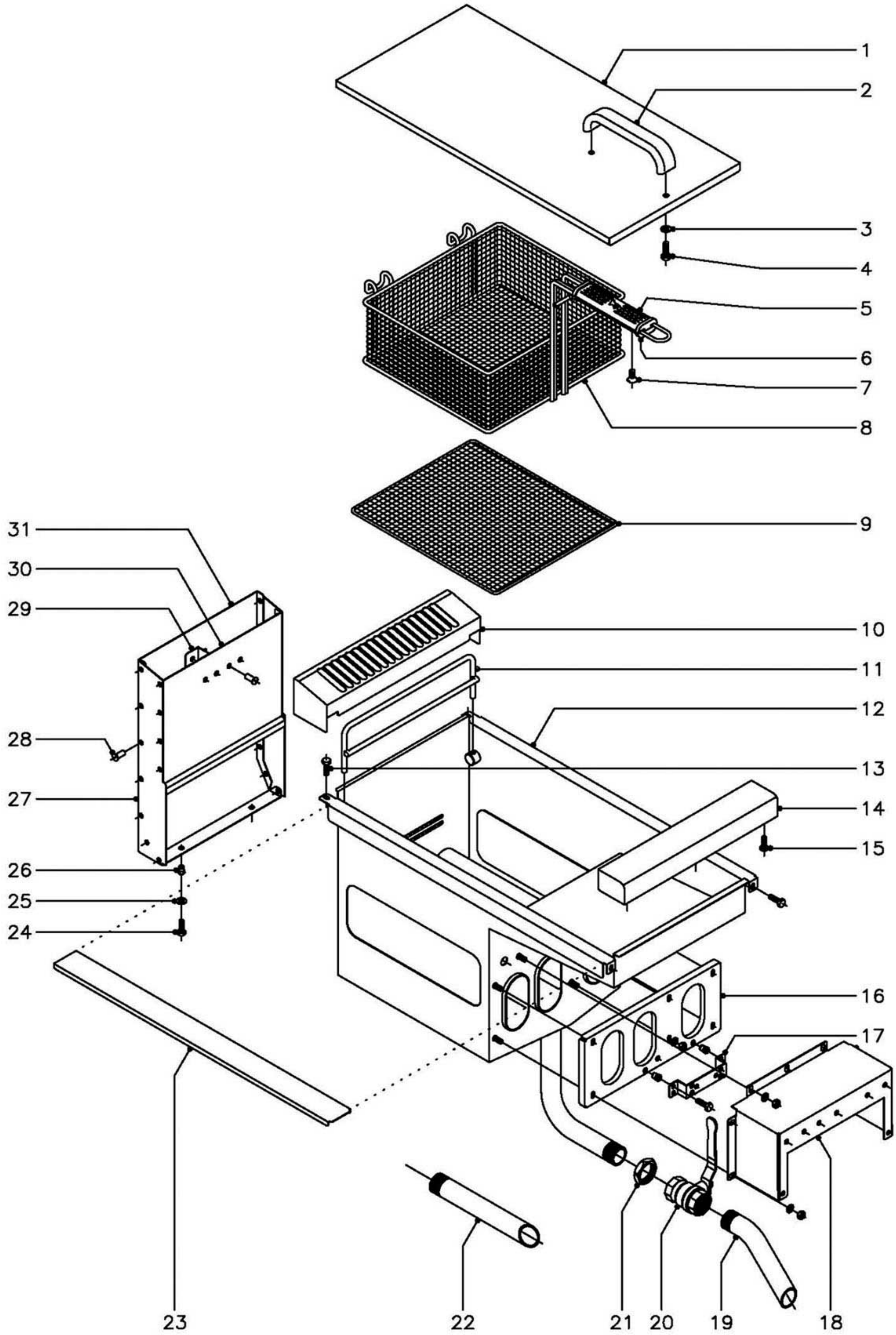
PLANO

C-1422

| ITEM | CODIGO  | DENOMINACION                    | TEXTO | FG-710 | FG-720 | FE-710 | FE-720 |  |  |  |  |  |  | NOTAS |
|------|---------|---------------------------------|-------|--------|--------|--------|--------|--|--|--|--|--|--|-------|
| 1    | Q221342 | Remache exagonal M-5            |       | 2      | 4      | 6      | 12     |  |  |  |  |  |  |       |
| 2    | X312831 | Panel lateral izquierdo         |       | 1      | 2      | 1      | 2      |  |  |  |  |  |  |       |
| 3    | X312832 | Panel lateral derecho           |       | 1      | 2      | 1      | 2      |  |  |  |  |  |  |       |
| 4    | Q221342 | Remache exagonal M-5            |       | 2      | 4      | 2      | 4      |  |  |  |  |  |  |       |
| 5    | X312600 | Escuadra amarre mesa 710        |       | 1      | -      | 1      | -      |  |  |  |  |  |  |       |
| 5    | X332631 | Escuadra amarre mesa 720        |       | -      | 1      | -      | 1      |  |  |  |  |  |  |       |
| 6    | Q162040 | Tuerca exagonal M-6             |       | 2      | 2      | 2      | 2      |  |  |  |  |  |  |       |
| 7    | Q302022 | Arandela plana Ø16xØ6x1,2       |       | 2      | 2      | 2      | 2      |  |  |  |  |  |  |       |
| 8    | Q152004 | Tornillo aplastado M-5x13       |       | 2      | 4      | 2      | 4      |  |  |  |  |  |  |       |
| 9    | Q152004 | Tornillo aplastado M-5x13       |       | 2      | 3      | 2      | 3      |  |  |  |  |  |  |       |
| 10   | Q302022 | Arandela plana Ø16xØ6x1,2       |       | 2      | 2      | 2      | 2      |  |  |  |  |  |  |       |
| 11   | Q151336 | Tornillo soporte guia           |       | 2      | 2      | 2      | 2      |  |  |  |  |  |  |       |
| 12   | Q419005 | Remache tubular Ø4x8            |       | 4      | 4      | 4      | 4      |  |  |  |  |  |  |       |
| 13   | U452804 | Cantonera derecha portamandos   |       | 1      | 1      | 1      | 1      |  |  |  |  |  |  |       |
| 14   | Q152004 | Tornillo aplastado M-5x13       |       | 2      | 2      | 2      | 2      |  |  |  |  |  |  |       |
| 15   | X322800 | Panel portamandos 710           |       | 1      | -      | 1      | -      |  |  |  |  |  |  |       |
| 15   | X332800 | Panel portamandos 720           |       | -      | 1      | -      | 1      |  |  |  |  |  |  |       |
| 16   | U452805 | Cantonera izquierda portamandos |       | 1      | 1      | 1      | 1      |  |  |  |  |  |  |       |
| 17   | Q152004 | Tornillo aplastado M-5x13       |       | 4      | -      | 4      | -      |  |  |  |  |  |  |       |
| 18   | Q221342 | Remache exagonal M-5            |       | 4      | -      | 4      | -      |  |  |  |  |  |  |       |
| 19   | X322615 | Escuadra refuerzo               |       | 1      | -      | 1      | -      |  |  |  |  |  |  |       |
| 20   | X260151 | Pata regulable                  |       | 4      | 4      | 4      | 4      |  |  |  |  |  |  |       |
| 21   | Q411304 | Remache avibulb Ø4,8            |       | 16     | 16     | 16     | 16     |  |  |  |  |  |  |       |
| 22   | Q012043 | Tornillo exagonal M-6x20        |       | 8      | 16     | 8      | 16     |  |  |  |  |  |  |       |
| 23   | Q302022 | Arandela plana Ø16xØ6x1,2       |       | 8      | 16     | 8      | 16     |  |  |  |  |  |  |       |
| 24   | X312640 | Liston soporte patas 710        |       | 2      | -      | 2      | -      |  |  |  |  |  |  |       |
| 24   | U742640 | Liston soporte patas 720        |       | -      | 2      | -      | 2      |  |  |  |  |  |  |       |
| 25   | Q221343 | Remache exagonal M-6            |       | 8      | 16     | 8      | 16     |  |  |  |  |  |  |       |







MOD.

FREIDORAS MODULARES 700

ZONA

CUBA

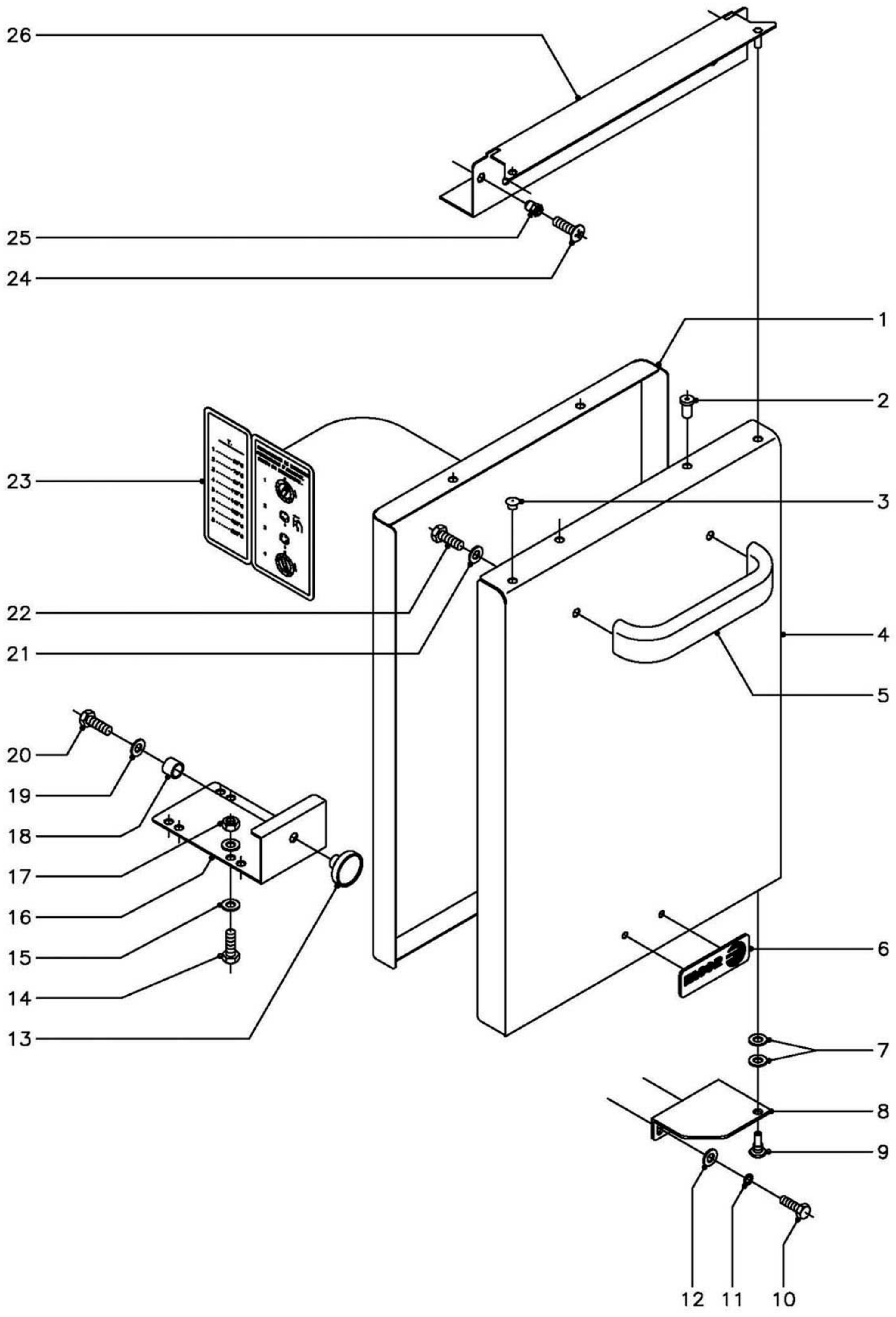
PLANO

C-1423

| ITEM | CODIGO  | DENOMINACION                       | TEXTO | FG-710 | FG-720 | FE-710 | FE-720 |  |  |  |  |  |  | NOTAS |
|------|---------|------------------------------------|-------|--------|--------|--------|--------|--|--|--|--|--|--|-------|
| 1    | X316108 | Tapa de cuba (gas)                 |       | 1      | 2      | -      | -      |  |  |  |  |  |  |       |
| 1    | X326106 | Tapa de cuba (electricas)          |       | -      | -      | 1      | 2      |  |  |  |  |  |  |       |
| 2    | U580521 | Asa                                |       | 1      | 2      | 1      | 2      |  |  |  |  |  |  |       |
| 3    | Q302022 | Arandela plana Ø16xØ6x1,2          |       | 2      | 4      | 2      | 4      |  |  |  |  |  |  |       |
| 4    | Q012041 | Tornillo exagonal M-6x10           |       | 2      | 4      | 2      | 4      |  |  |  |  |  |  |       |
| 5    | 9616402 | Cacha superior                     |       | 1      | 2      | 1      | 2      |  |  |  |  |  |  |       |
| 6    | 9616401 | Cacha inferior                     |       | 1      | 2      | 1      | 2      |  |  |  |  |  |  |       |
| 7    | Q041431 | Tornillo avellanado M-5x10         |       | 2      | 4      | 2      | 4      |  |  |  |  |  |  |       |
| 8    | X316503 | Cestillo de fritura (Grande)       |       | 1      | 2      | 1      | 2      |  |  |  |  |  |  |       |
| 8    | X316530 | Cestillo de fritura (Pequeño)      |       | 2      | 4      | 2      | 4      |  |  |  |  |  |  |       |
| 9    | X316502 | Rejilla (Gas)                      |       | 1      | 2      | -      | -      |  |  |  |  |  |  |       |
| 9    | X326501 | Rejilla (Electricas)               |       | -      | -      | 1      | 2      |  |  |  |  |  |  |       |
| 10   | X315425 | Embellecedor posterior 1/2 (Gas)   |       | 1      | 2      | -      | -      |  |  |  |  |  |  |       |
| 10   | X325401 | Embellecedor posterior 1/2 (Elec.) |       | -      | -      | 1      | 2      |  |  |  |  |  |  |       |
| 11   | X316501 | Soporte cestillo                   |       | 1      | 2      | 1      | 2      |  |  |  |  |  |  |       |
| 12   | X316134 | Cuba (Gas)                         |       | 1      | 2      | -      | -      |  |  |  |  |  |  |       |
| 12   | X326100 | Cuba (Electricas)                  |       | -      | -      | 1      | 2      |  |  |  |  |  |  |       |
| 13   | Q012031 | Tornillo exagonal M-5x10           |       | 4      | 8      | 4      | 8      |  |  |  |  |  |  |       |
| 14   | X315400 | Anterior de mesa 1/2 m.            |       | 1      | -      | 1      | -      |  |  |  |  |  |  |       |
| 14   | U745407 | Anterior de mesa 1 m.              |       | -      | 1      | -      | 1      |  |  |  |  |  |  |       |
| 15   | Q152004 | Tornillo aplastado M-5x13          |       | 2      | 3      | 2      | 3      |  |  |  |  |  |  |       |
| 16   | X312641 | Proteccion frente cuba             |       | 1      | 2      | -      | -      |  |  |  |  |  |  |       |
|      | Q302022 | Arandela plana Ø16xØ6x1,2          |       | 2      | 4      | -      | -      |  |  |  |  |  |  |       |
|      | Q162040 | Tuerca exagonal M-6                |       | 2      | 4      | -      | -      |  |  |  |  |  |  |       |
| 17   | X312644 | Soporte piloto                     |       | 1      | 2      | -      | -      |  |  |  |  |  |  |       |
|      | Q221342 | Remache exagonal M-5               |       | 2      | 4      | -      | -      |  |  |  |  |  |  |       |
|      | Q012031 | Tornillo exagonal M-5x10           |       | 2      | 4      | -      | -      |  |  |  |  |  |  |       |
| 18   | X312643 | Caja amarre quemadores             |       | 1      | 2      | -      | -      |  |  |  |  |  |  |       |
| 19   | X316113 | Tubo salida aceite (Gas)           |       | 1      | 2      | -      | -      |  |  |  |  |  |  |       |









MOD.

FREIDORAS MODULARES 700

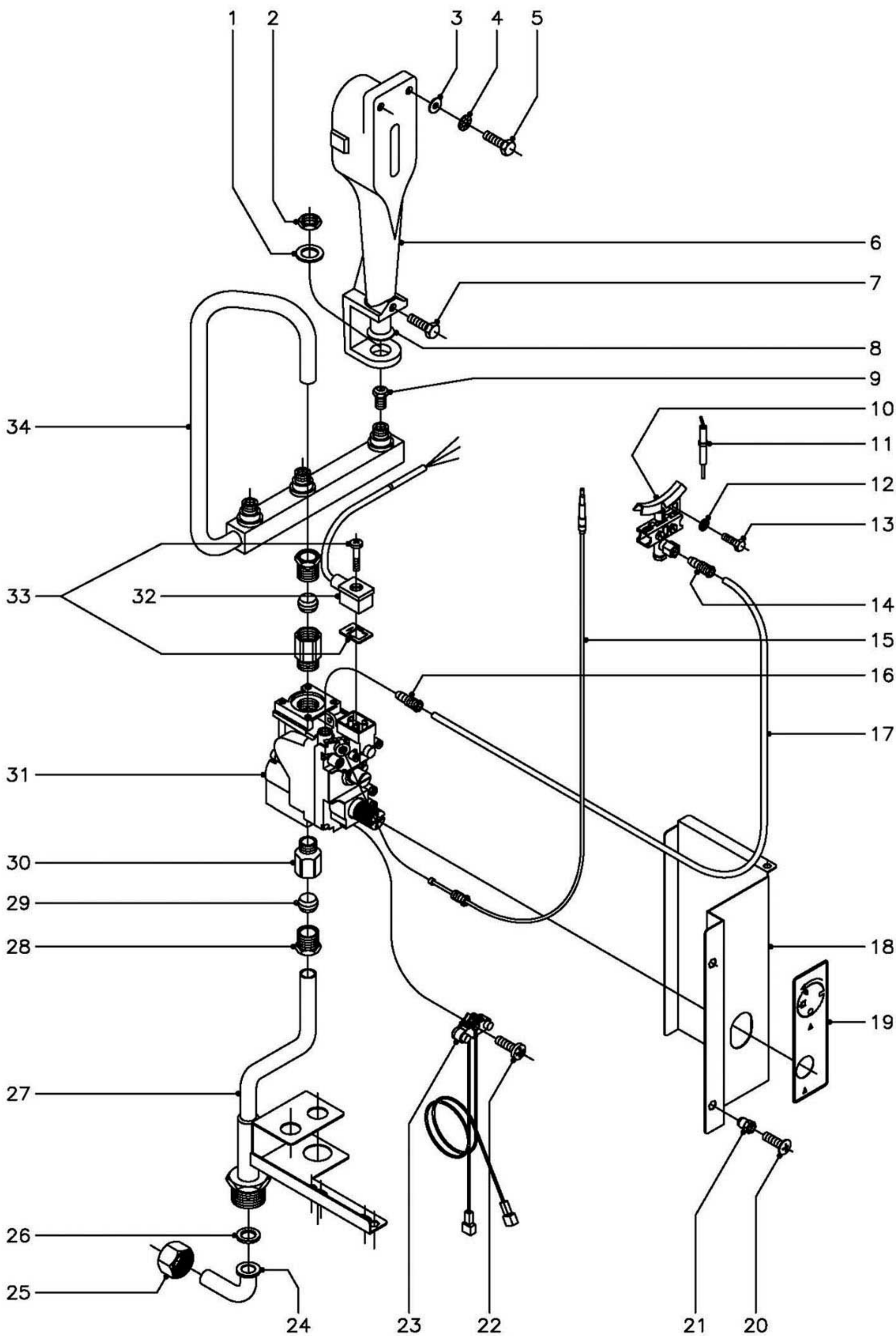
ZONA

PUERTA

PLANO

C-1424

| ITEM | CODIGO  | DENOMINACION                       | TEXTO | FG-710 | FG-720 | FE-710 | FE-720 |  |  |  |  |  |  | NOTAS |
|------|---------|------------------------------------|-------|--------|--------|--------|--------|--|--|--|--|--|--|-------|
| 1    | X960500 | Contrapuerta                       |       | 1      | 2      | 1      | 2      |  |  |  |  |  |  |       |
| 2    | Q419005 | Remache tubular Ø4x8               |       | 4      | 8      | 4      | 8      |  |  |  |  |  |  |       |
| 3    | X160537 | Tapon puertas                      |       | 1      | 2      | 1      | 2      |  |  |  |  |  |  |       |
| 4    | X310507 | Puerta                             |       | 1      | 2      | 1      | 2      |  |  |  |  |  |  |       |
| 5    | U580521 | Asa de puerta                      |       | 1      | 2      | 1      | 2      |  |  |  |  |  |  |       |
| 6    | U262806 | Escudo FAGOR                       |       | 1      | 2      | 1      | 2      |  |  |  |  |  |  |       |
|      | Q221023 | Clip sujecion escudo               |       | 2      | 4      | 2      | 4      |  |  |  |  |  |  |       |
| 7    | Q232040 | Arandela plana A-6                 |       | 2      | 4      | 2      | 4      |  |  |  |  |  |  |       |
| 8    | E022608 | Bisagra inferior derecha           |       | 1      | 1      | 1      | 1      |  |  |  |  |  |  |       |
| s/n  | E022607 | Bisagra inferior izquierda         |       | -      | 1      | -      | 1      |  |  |  |  |  |  |       |
| 9    | X960504 | Tornillo de giro M-8               |       | 1      | 2      | 1      | 2      |  |  |  |  |  |  |       |
| 10   | Q012042 | Tornillo exagonal M-6x15           |       | 2      | 4      | 2      | 4      |  |  |  |  |  |  |       |
| 11   | Q262040 | Arandela muelle A-6                |       | 2      | 4      | 2      | 4      |  |  |  |  |  |  |       |
| 12   | Q302022 | Arandela plana Ø16xØ6x1,2          |       | 2      | 4      | 2      | 4      |  |  |  |  |  |  |       |
| 13   | X960501 | Iman                               |       | 2      | 4      | 2      | 4      |  |  |  |  |  |  |       |
| 14   | Q012043 | Tornillo exagonal M-6x20           |       | 2      | 4      | 2      | 4      |  |  |  |  |  |  |       |
| 15   | Q302022 | Arandela plana Ø16xØ6x1,2          |       | 4      | 8      | 4      | 8      |  |  |  |  |  |  |       |
| 16   | X312631 | Escuadra amarre iman               |       | 1      | 2      | 1      | 2      |  |  |  |  |  |  |       |
| 17   | Q162040 | Tuerca exagonal M-6                |       | 2      | 4      | 2      | 4      |  |  |  |  |  |  |       |
| 18   | X960502 | Fijacion iman                      |       | 2      | 4      | 2      | 4      |  |  |  |  |  |  |       |
| 19   | Q232020 | Arandela plana A-4                 |       | 2      | 4      | 2      | 4      |  |  |  |  |  |  |       |
| 20   | Q012021 | Tornillo exagonal M-4x10           |       | 2      | 4      | 2      | 4      |  |  |  |  |  |  |       |
| 21   | Q302022 | Arandela plana Ø16xØ6x1,2          |       | 2      | 4      | 2      | 4      |  |  |  |  |  |  |       |
| 22   | Q012041 | Tornillo exagonal M-6x10           |       | 2      | 4      | 2      | 4      |  |  |  |  |  |  |       |
| 23   | X166511 | Tabla temperaturas e instrucciones |       | 1      | 1      | 1      | 1      |  |  |  |  |  |  |       |
| 24   | Q152004 | Tornillo aplastado M-5x13          |       | 2      | 4      | 2      | 4      |  |  |  |  |  |  |       |
| 25   | Q221342 | Remache exagonal M-5               |       | 2      | 4      | 2      | 4      |  |  |  |  |  |  |       |
| 26   | X312611 | Liston bisagra superior derecha    |       | 1      | 1      | 1      | 1      |  |  |  |  |  |  |       |
| s/n  | X332600 | Liston bisagra superior izquierda  |       | -      | 1      | -      | 1      |  |  |  |  |  |  |       |



MOD.

FREIDORAS MODULARES 700

ZONA

PARTE FUNCIONAL GAS

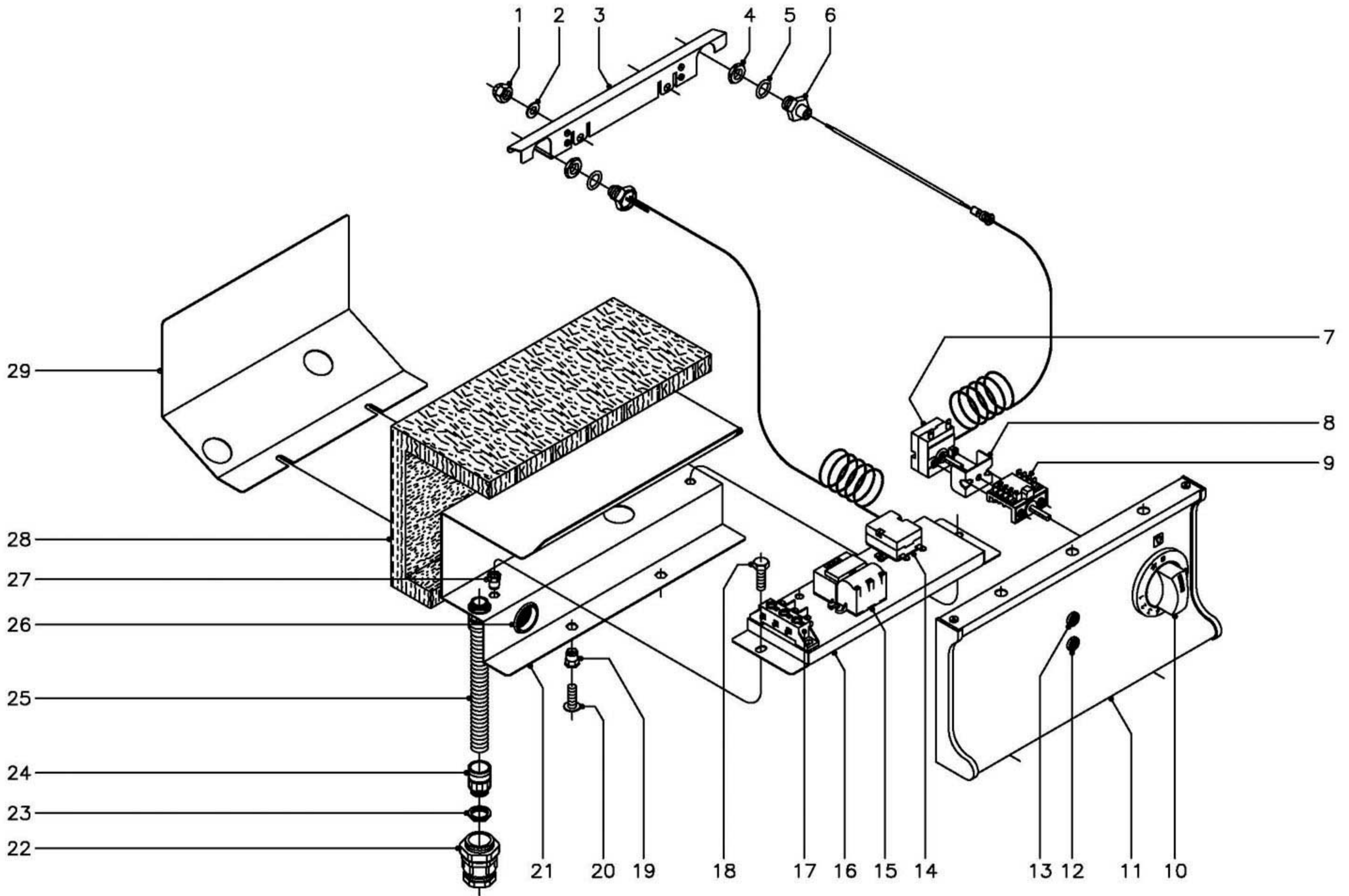
PLANO

C-1425

| ITEM | CODIGO  | DENOMINACION                        | TEXTO | FG-710 | FG-720 |  |  |  |  |  |  |  | NOTAS                  |
|------|---------|-------------------------------------|-------|--------|--------|--|--|--|--|--|--|--|------------------------|
| 1    | Q301322 | Arandela plana Ø27xØ17x2            |       | 3      | 6      |  |  |  |  |  |  |  |                        |
| 2    | Q223021 | Tuerca exagonal M-15x1              |       | 3      | 6      |  |  |  |  |  |  |  |                        |
| 3    | Q302022 | Arandela plana Ø16xØ6x1,2           |       | 6      | 12     |  |  |  |  |  |  |  |                        |
| 4    | Q242040 | Arandela abanico A-6                |       | 6      | 12     |  |  |  |  |  |  |  |                        |
| 5    | Q012042 | Tornillo exagonal M-6x15            |       | 6      | 12     |  |  |  |  |  |  |  |                        |
| 6    | X015700 | Quemador completo                   |       | 3      | 6      |  |  |  |  |  |  |  |                        |
| 7    | Q012031 | Tornillo exagonal M-5x10            |       | 3      | 6      |  |  |  |  |  |  |  |                        |
| 8    | U325707 | Regulador de aire                   |       | 3      | 6      |  |  |  |  |  |  |  |                        |
| 9    | X312400 | Tobera quemador Ø1,10 (B.P.)        |       | 3      | 6      |  |  |  |  |  |  |  |                        |
| 9    | N502401 | Tobera quemador Ø1,70 (G.N.)        |       | 3      | 6      |  |  |  |  |  |  |  |                        |
| 9    | 9483100 | Tobera quemador Ø3,00 (G.V.)        |       | 3      | 6      |  |  |  |  |  |  |  |                        |
| 10   | U062101 | Piloto completo montado (B.P.)      |       | 1      | 2      |  |  |  |  |  |  |  |                        |
|      | U442138 | Inyector piloto Ø0,25 (B.P. y G.V.) |       | 1      | 2      |  |  |  |  |  |  |  | Regular para Gas Villa |
|      | U442137 | Inyector piloto Ø0,40 (Gas Natural) |       | 1      | 2      |  |  |  |  |  |  |  |                        |
| 11   | X012101 | Bujia de encendido                  |       | 1      | 2      |  |  |  |  |  |  |  |                        |
| 12   | Q242030 | Arandela abanico A-5                |       | 2      | 4      |  |  |  |  |  |  |  |                        |
| 13   | Q012031 | Tornillo exagonal M-5x10            |       | 2      | 4      |  |  |  |  |  |  |  |                        |
| 14   | U134323 | Racord con bicono Ø6                |       | 1      | 2      |  |  |  |  |  |  |  |                        |
| 15   | U562130 | Termopar L=850                      |       | 1      | 2      |  |  |  |  |  |  |  |                        |
| 16   | U134323 | Racord con bicono Ø6                |       | 1      | 2      |  |  |  |  |  |  |  |                        |
| 17   | X315009 | Tubo piloto                         |       | 1      | 2      |  |  |  |  |  |  |  |                        |
| 18   | X312614 | Chapa proteccion electrovalvula     |       | 1      | 2      |  |  |  |  |  |  |  |                        |
| 19   | X162617 | Pegatina posicion mando             |       | 1      | 2      |  |  |  |  |  |  |  |                        |
| 20   | Q152004 | Tornillo aplastado M-5x13           |       | 3      | 6      |  |  |  |  |  |  |  |                        |
| 21   | Q221342 | Remache exagonal M-5                |       | 3      | 6      |  |  |  |  |  |  |  |                        |
| 22   | U134321 | Tornillo alomado M-4x15             |       | 1      | 2      |  |  |  |  |  |  |  |                        |
| 23   | R275027 | Cableado Electrosit                 |       | 1      | 2      |  |  |  |  |  |  |  |                        |
| 24   | U565007 | Codo entrada gas                    |       | 1      | 2      |  |  |  |  |  |  |  |                        |
| 25   | U725006 | Tuerca 3/4"                         |       | 1      | 2      |  |  |  |  |  |  |  |                        |







|                   |           |                 |  |             |   |
|-------------------|-----------|-----------------|--|-------------|---|
| N plano<br>C-1426 | Firma<br> | Fecha<br>9-2003 | Aparato<br>PARTE FUNCIONAL ELECTRICA<br>FREIDORAS FG-710, FG-720 | Lamina<br>5 | Fagor Industrial S.Coop. <b>FAGOR</b><br>Oferta |
|-------------------|-----------|-----------------|--|-------------|---|

MOD.

FREIDORAS MODULARES 700

ZONA

PARTE FUNCIONAL ELECTRICA

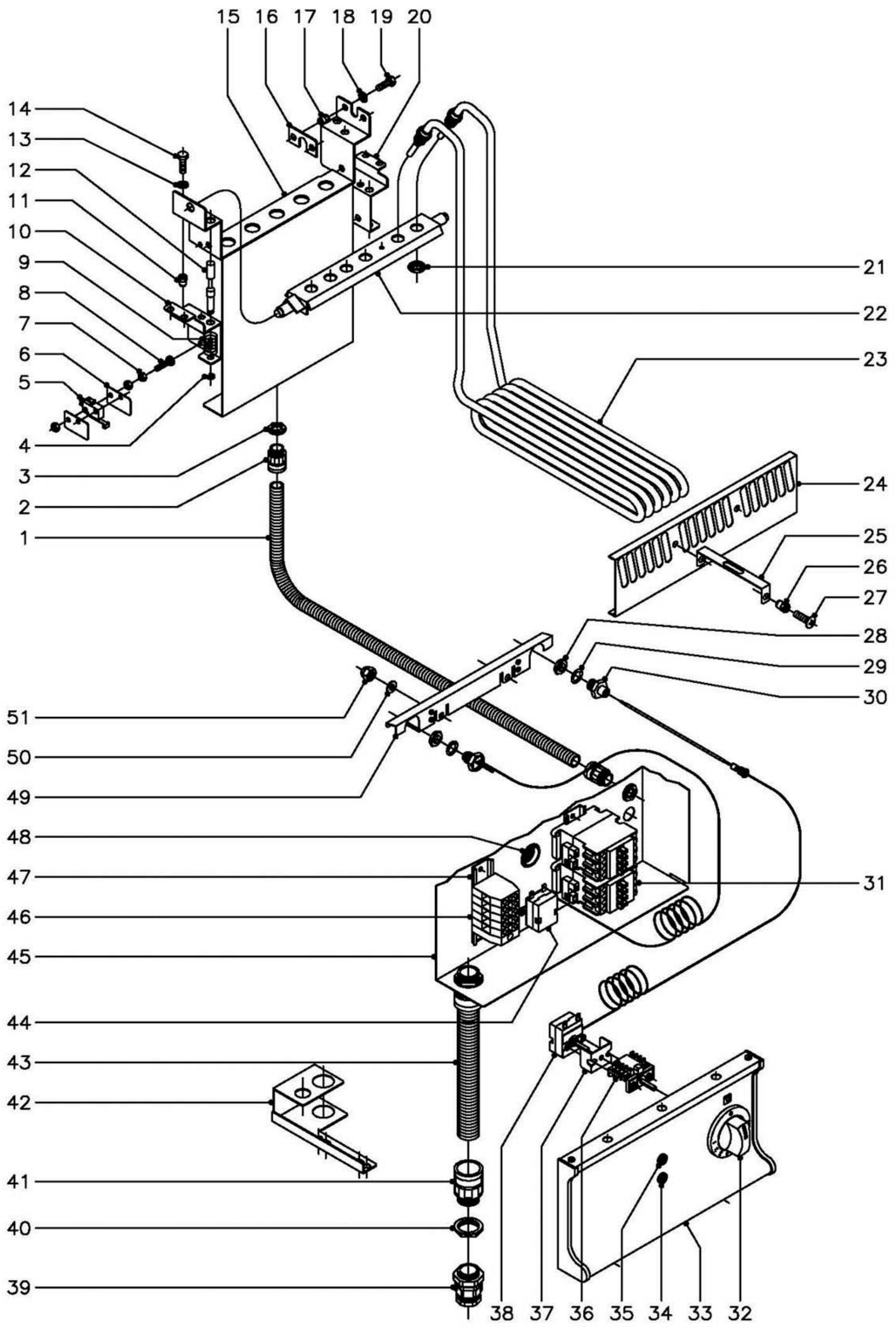
PLANO

C-1426

| ITEM | CODIGO  | DENOMINACION                   | TEXTO | FG-710 | FG-720 |  |  |  |  |  |  |  |  |  |  |  |  |  | NOTAS |
|------|---------|--------------------------------|-------|--------|--------|--|--|--|--|--|--|--|--|--|--|--|--|--|-------|
| 1    | Q212040 | Tuerca sombrerete M-6          |       | 2      | 4      |  |  |  |  |  |  |  |  |  |  |  |  |  |       |
| 2    | Q302022 | Arandela plana Ø16xØ6x1,2      |       | 2      | 4      |  |  |  |  |  |  |  |  |  |  |  |  |  |       |
| 3    | X326108 | Chapa proteccion bulbo         |       | 1      | 2      |  |  |  |  |  |  |  |  |  |  |  |  |  |       |
| 4    | X163012 | Tuerca exagonal M-14x1         |       | 2      | 4      |  |  |  |  |  |  |  |  |  |  |  |  |  |       |
| 5    | X012127 | Junta torica Ø20xØ14x3         |       | 2      | 4      |  |  |  |  |  |  |  |  |  |  |  |  |  |       |
| 6    | X166113 | Manguito amarre bulbo          |       | 1      | 2      |  |  |  |  |  |  |  |  |  |  |  |  |  |       |
| 7    | X163010 | Termostato 60 - 215°C.         |       | 1      | 2      |  |  |  |  |  |  |  |  |  |  |  |  |  |       |
| 8    | X313001 | 'U" Soporte termostato         |       | 1      | 2      |  |  |  |  |  |  |  |  |  |  |  |  |  |       |
| 9    | X163007 | Conmutador acople termostato   |       | 1      | 2      |  |  |  |  |  |  |  |  |  |  |  |  |  |       |
| 10   | X313003 | Boton de mando Ø6              |       | 1      | 2      |  |  |  |  |  |  |  |  |  |  |  |  |  |       |
| 11   | X322800 | Panel portamandos 710          |       | 1      | -      |  |  |  |  |  |  |  |  |  |  |  |  |  |       |
| 11   | X332800 | Panel portamandos 720          |       | -      | 1      |  |  |  |  |  |  |  |  |  |  |  |  |  |       |
| 12   | R693056 | Piloto ambar                   |       | 1      | 2      |  |  |  |  |  |  |  |  |  |  |  |  |  |       |
| 13   | R693055 | Piloto verde                   |       | 1      | 2      |  |  |  |  |  |  |  |  |  |  |  |  |  |       |
| 14   | X012130 | Termostato limitador           |       | 1      | 2      |  |  |  |  |  |  |  |  |  |  |  |  |  |       |
|      | Q223022 | Tuerca exagonal M-8x1          |       | 1      | 2      |  |  |  |  |  |  |  |  |  |  |  |  |  |       |
| 15   | R073007 | Encendedor                     |       | 1      | 2      |  |  |  |  |  |  |  |  |  |  |  |  |  |       |
| 16   | X312615 | Chapa amarre componentes       |       | 1      | 2      |  |  |  |  |  |  |  |  |  |  |  |  |  |       |
| 17   | U183046 | Regleta                        |       | 1      | 2      |  |  |  |  |  |  |  |  |  |  |  |  |  |       |
| 18   | Q012031 | Tornillo exagonal M-5x10       |       | 2      | 4      |  |  |  |  |  |  |  |  |  |  |  |  |  |       |
| 19   | Q221342 | Remache exagonal M-5           |       | 2      | 4      |  |  |  |  |  |  |  |  |  |  |  |  |  |       |
| 20   | Q152004 | Tornillo aplastado M-5x13      |       | 2      | 4      |  |  |  |  |  |  |  |  |  |  |  |  |  |       |
| 21   | X312613 | Chapa proteccion termostato    |       | 1      | 2      |  |  |  |  |  |  |  |  |  |  |  |  |  |       |
| 22   | R023013 | Prensaestopas                  |       | 1      | 2      |  |  |  |  |  |  |  |  |  |  |  |  |  |       |
| 23   | X033028 | Tuerca                         |       | 2      | 4      |  |  |  |  |  |  |  |  |  |  |  |  |  |       |
| 24   | X033027 | Racord                         |       | 2      | 4      |  |  |  |  |  |  |  |  |  |  |  |  |  |       |
| 25   | 3712600 | Tubo proteccion manguera L=750 |       | 1      | 2      |  |  |  |  |  |  |  |  |  |  |  |  |  |       |
| 26   | X723014 | Pasamuros Ø30                  |       | 1      | 2      |  |  |  |  |  |  |  |  |  |  |  |  |  |       |
| 27   | Q221342 | Remache exagonal M-5           |       | 2      | 4      |  |  |  |  |  |  |  |  |  |  |  |  |  |       |







N plano  
C-1427

Firma  
*[Signature]*

Fecha  
9-2003

Aparato  
PARTE FUNCIONAL ELECTRICA  
FREIDORAS FE-710, FE-720

Lamina  
6

Fagor Industrial S.Coop. **FAGOR**  
Orate

MOD.

FREIDORAS MODULARES 700

ZONA

PARTE FUNCIONAL ELECTRICA

PLANO

C-1427

| ITEM | CODIGO  | DENOMINACION                       | TEXTO | FE-710 | FE-720 |  |  |  |  |  |  |  | NOTAS           |
|------|---------|------------------------------------|-------|--------|--------|--|--|--|--|--|--|--|-----------------|
| 1    | 3712600 | Tubo proteccion cableado L=750     |       | 4      | 8      |  |  |  |  |  |  |  |                 |
| 2    | X033027 | Racord                             |       | 8      | 16     |  |  |  |  |  |  |  |                 |
| 3    | X033028 | Tuerca                             |       | 8      | 16     |  |  |  |  |  |  |  |                 |
| 4    | Q271033 | Arandela de seguridad A-6          |       | 1      | 2      |  |  |  |  |  |  |  |                 |
| 5    | R010534 | Micro elevacion resistencia        |       | 1      | 2      |  |  |  |  |  |  |  |                 |
| 6    | R010535 | Placa separadora                   |       | 2      | 4      |  |  |  |  |  |  |  |                 |
| 7    | Q161310 | Tuerca exagonal M-3                |       | 6      | 12     |  |  |  |  |  |  |  |                 |
| 8    | Q031315 | Tornillo alomado M-3x30            |       | 2      | 4      |  |  |  |  |  |  |  |                 |
| 9    | Z700603 | Muelle                             |       | 1      | 2      |  |  |  |  |  |  |  |                 |
| 10   | X322609 | Escuadra soporte giro izquierda    |       | 1      | 2      |  |  |  |  |  |  |  |                 |
| 11   | Q221342 | Remache exagonal M-5               |       | 4      | 8      |  |  |  |  |  |  |  |                 |
| 12   | R010533 | Eje micro                          |       | 1      | 2      |  |  |  |  |  |  |  |                 |
| 13   | Q242030 | Arandela abanico A-5               |       | 4      | 8      |  |  |  |  |  |  |  |                 |
| 14   | Q012031 | Tornillo exagonal M-5x10           |       | 4      | 8      |  |  |  |  |  |  |  |                 |
| 15   | X322606 | Soporte de giro                    |       | 1      | 2      |  |  |  |  |  |  |  |                 |
| 16   | X322611 | Fijacion giro resistencias         |       | 1      | 2      |  |  |  |  |  |  |  |                 |
| 17   | Q221342 | Remache exagonal M-5               |       | 2      | 4      |  |  |  |  |  |  |  |                 |
| 18   | Q242030 | Arandela abanico A-5               |       | 2      | 4      |  |  |  |  |  |  |  |                 |
| 19   | Q012031 | Tornillo exagonal M-5x10           |       | 2      | 4      |  |  |  |  |  |  |  |                 |
| 20   | X322610 | Escuadra soporte giro derecha      |       | 1      | 2      |  |  |  |  |  |  |  |                 |
| 21   | -       | Arandela A-14 (Con resistencias)   |       | 6      | 12     |  |  |  |  |  |  |  |                 |
| 21   | -       | Tuerca M-14x1,5 (Con resistencias) |       | 6      | 12     |  |  |  |  |  |  |  |                 |
| 22   | X322602 | Giro resistencias                  |       | 1      | 2      |  |  |  |  |  |  |  |                 |
| 23   | X323001 | Resistencia derecha y central      |       | 2      | 4      |  |  |  |  |  |  |  | (4 KW., 230 V.) |
| s/n  | X323002 | Resistencia izquierda              |       | 1      | 2      |  |  |  |  |  |  |  | (4 KW., 230 V.) |
| 24   | X323004 | Escuadra fijacion resistencias     |       | 2      | 4      |  |  |  |  |  |  |  |                 |
| 25   | X033035 | Escuadra distanciadora             |       | 2      | 4      |  |  |  |  |  |  |  |                 |
| 26   | Q221342 | Remache exagonal M-5               |       | 4      | 8      |  |  |  |  |  |  |  |                 |
| 27   | Q152004 | Tornillo aplastado M-5x13          |       | 4      | 8      |  |  |  |  |  |  |  |                 |



| ITEM | CODIGO  | DENOMINACION                      | TEXTO | FE-710 | FE-720 |  |  |  |  |  |  |  | NOTAS                         |
|------|---------|-----------------------------------|-------|--------|--------|--|--|--|--|--|--|--|-------------------------------|
| 28   | X163012 | Tuerca exagonal M-14x1            |       | 2      | 4      |  |  |  |  |  |  |  |                               |
| 29   | X012127 | Junta torica Ø20xØ14x3            |       | 2      | 4      |  |  |  |  |  |  |  |                               |
| 30   | X166113 | Manguito amarre bulbo             |       | 1      | 2      |  |  |  |  |  |  |  |                               |
| 31   | Z203050 | Contactador Sirius 3RT-1016-2AP01 |       | 2      | 4      |  |  |  |  |  |  |  |                               |
| 32   | X183025 | Boton de mando Ø6                 |       | 1      | 2      |  |  |  |  |  |  |  |                               |
| s/n  | Q281000 | Anillo de compresion para mando   |       | 1      | 2      |  |  |  |  |  |  |  |                               |
| 33   | X322800 | Panel portamandos 710             |       | 1      | -      |  |  |  |  |  |  |  |                               |
| 33   | X332800 | Panel portamandos 720             |       | -      | 1      |  |  |  |  |  |  |  |                               |
| 34   | R693056 | Piloto ambar                      |       | 1      | 2      |  |  |  |  |  |  |  |                               |
| 35   | R693055 | Piloto verde                      |       | 1      | 2      |  |  |  |  |  |  |  |                               |
| 36   | X163007 | Conmutador acople termostato      |       | 1      | 2      |  |  |  |  |  |  |  |                               |
| 37   | X313001 | 'U' Soporte termostato            |       | 1      | 2      |  |  |  |  |  |  |  |                               |
| 38   | X163010 | Termostato 60 - 215°C.            |       | 1      | 2      |  |  |  |  |  |  |  |                               |
| 39   | R023013 | Prensaestopas                     |       | 1      | 2      |  |  |  |  |  |  |  |                               |
| 40   | R023025 | Contratuerca                      |       | 2      | 4      |  |  |  |  |  |  |  |                               |
| 41   | X713021 | Racord                            |       | 2      | 4      |  |  |  |  |  |  |  |                               |
| 42   | X165030 | Escuadra amarre tubo entrada      |       | 1      | 2      |  |  |  |  |  |  |  | Amarre racord y prensaestopas |
| 43   | 3712300 | Tubo proteccion manguera L=380    |       | 1      | 2      |  |  |  |  |  |  |  |                               |
| 44   | X012130 | Termostato limitador              |       | 1      | 2      |  |  |  |  |  |  |  |                               |
|      | Q223022 | Tuerca exagonal M-8x1             |       | 1      | 2      |  |  |  |  |  |  |  |                               |
| 45   | X322601 | Proteccion termostato completo    |       | 1      | 2      |  |  |  |  |  |  |  |                               |
| 46   | P453025 | Borna paso 10 (gris)              |       | 3      | 6      |  |  |  |  |  |  |  |                               |
|      | Z263302 | Borna paso 10 (azul)              |       | 1      | 2      |  |  |  |  |  |  |  |                               |
|      | P453026 | Borna tierra 10 (verde-amarillo)  |       | 1      | 2      |  |  |  |  |  |  |  |                               |
|      | Z263303 | Tope final                        |       | 1      | 2      |  |  |  |  |  |  |  |                               |
| 47   | R663055 | Guia contactor L=120              |       | 2      | 4      |  |  |  |  |  |  |  |                               |
| 48   | X723014 | Pasamuros Ø30                     |       | 1      | 2      |  |  |  |  |  |  |  |                               |
| 49   | X326108 | Chapa proteccion bulbo            |       | 1      | 2      |  |  |  |  |  |  |  |                               |
| 50   | Q302022 | Arandela plana Ø16xØ6x1,2         |       | 2      | 4      |  |  |  |  |  |  |  |                               |







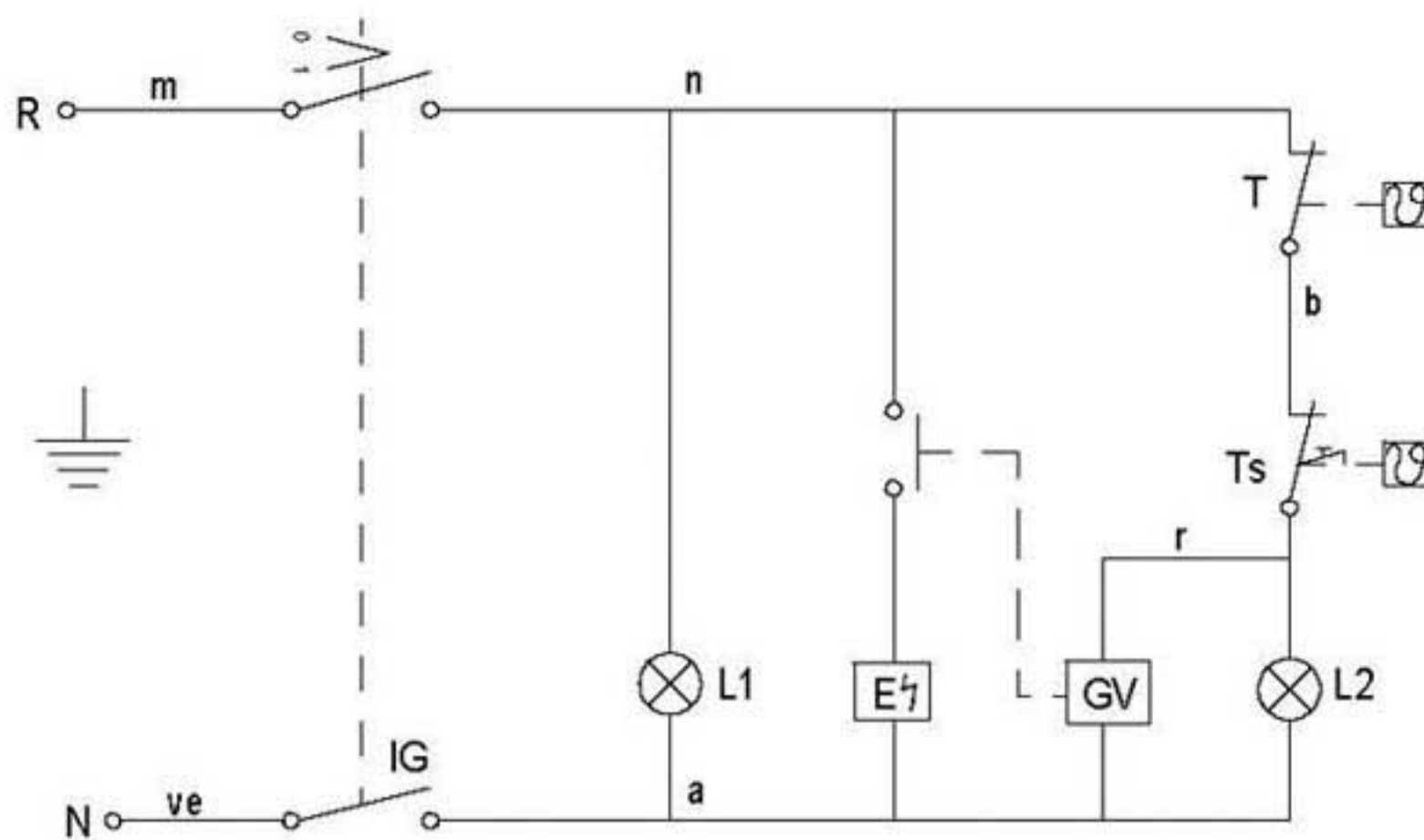








100



m=marron-brown-marron ve=verde-green-vert  
 n=negro-black-noir g=gris-grey-gris  
 r=rojo-red-rouge a=azul-blue-bleu  
 b=blanco-white-blanc

150

IG = Interruptor general  
 L1 = Lampara funcionamiento  
 T = Termostato regulable (60-220C)  
 Ts = Limitador (245)  
 L2 = Lampara calentamiento  
 E = Encendedor  
 GV = Grifo valvula gas

## NOTAS:

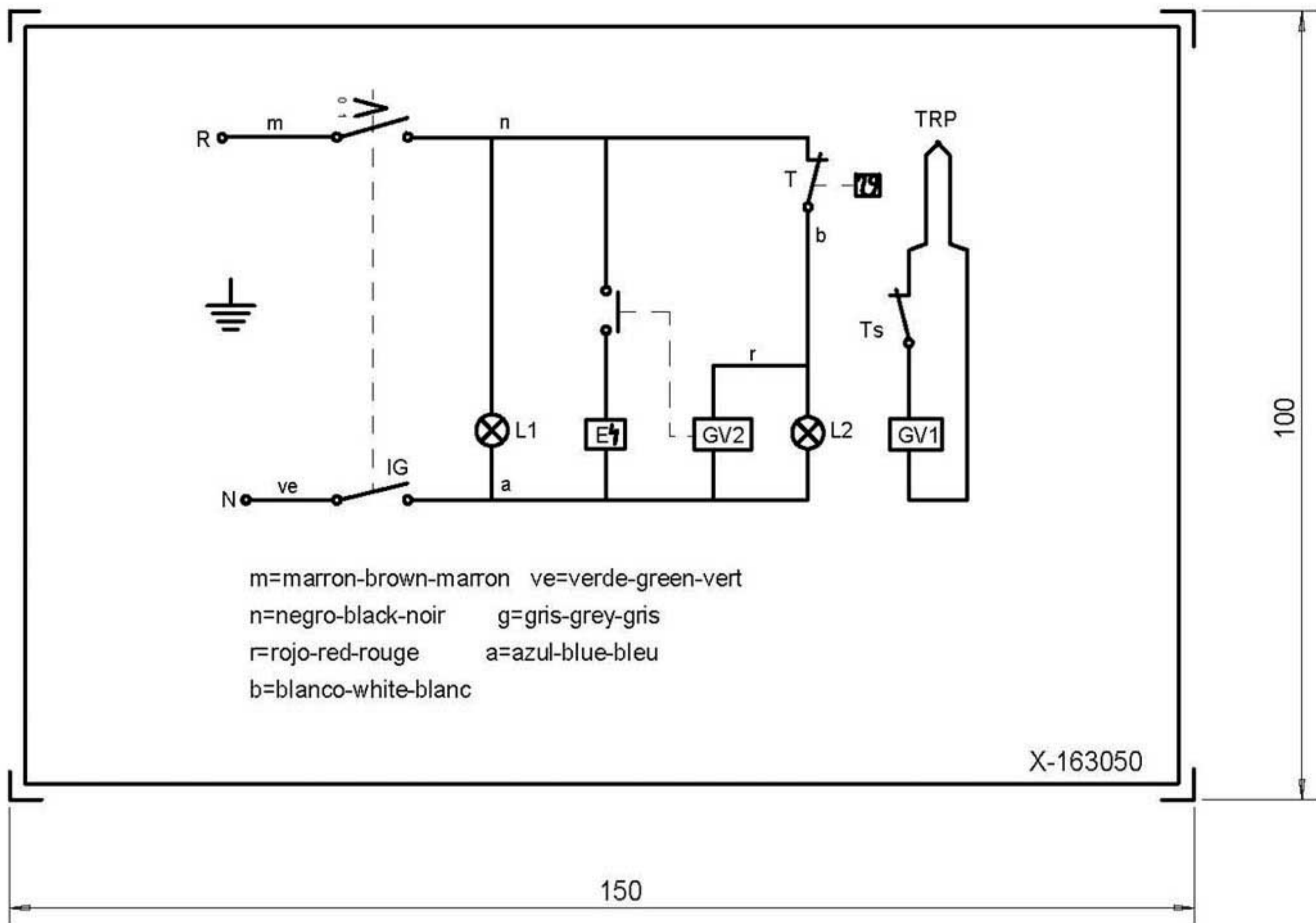
- GRABACIONES: COLOR NEGRO
- FONDO: COLOR NATURAL
- LA PLACA SERA AUTOADHESIVA POR LA CARA POSTERIOR Y RECUBIERTO POR UN PAPEL PROTECTOR.
- LAS INSCRIPCIONES RESISTIRAN SIN MODIFICACION APRECIABLE, EL FROTAMIENTO DURANTE 15 SEG. DE UN ALGODON EMPAPADO EN GASOLINA.

ALUMINIO BRILLO (SOLID-FOIL)

e=ALUMINIO+PROTECTOR=0,2

+0.05  
-0.05

|            |   |              |  |  |     |         |       |       |        |    |
|------------|---|--------------|--|--|-----|---------|-------|-------|--------|----|
|            | Esquema teorico adhesivo FG-91/20   |              | X163005  |  |     |         |       |       |        |    |
| Nº         | Pieza   | Material     | Nº Clasificacion   | Acabado  |     |         |       |       |        |    |
| Nº         | Modificacion  | Propuesta de | Fecha  | Tolerancias generales  |     |         |       |       |        |    |
| 1          | Modificacion general(pasar a fabri.interi.)   | Plazaola     | 23-5-97  | <table border="0"> <tr> <td>&lt;5±</td> <td>50-100±</td> </tr> <tr> <td>5-25±</td> <td>&gt;100±</td> </tr> <tr> <td>25-50±</td> <td>∞±</td> </tr> </table> | <5± | 50-100± | 5-25± | >100± | 25-50± | ∞± |
| <5±        | 50-100±   |              |  |  |     |         |       |       |        |    |
| 5-25±      | >100±   |              |  |  |     |         |       |       |        |    |
| 25-50±     | ∞±  |              |  |  |     |         |       |       |        |    |
|            | Firma   | Fecha        | <br>Fagor Industrial,Koop.EIk, Mugatua<br>Mecanizado superficial |  |     |         |       |       |        |    |
| Dibujado   | JON   | 93-9-14      |  |  |     |         |       |       |        |    |
| Proyectado |  |              |  |  |     |         |       |       |        |    |
| Comprobado |   |              |  |  |     |         |       |       |        |    |
| Escala     | FREIDORAS   |              |  | Plano numero<br>HB-14457-1   |     |         |       |       |        |    |
|            | Plano hau ez daiteke erabil ez berrizta gure baimenitz gabe                         |              |  | Sustituye al N°<br>Sustituido por  |     |         |       |       |        |    |



m=marron-brown-marron    ve=verde-green-vert  
n=negro-black-noir        g=gris-grey-gris  
r=rojo-red-rouge         a=azul-blue-bleu  
b=blanco-white-blanc

**NOTA**

- LAS INSCRIPCIONES RESISTIRAN SIN MODIFICACION APRECIABLE, EL FROTAMIENTO DURANTE 15 SEG. DE UN ALGODON EMPAPADO EN GASOLINA.

- IG = Interruptor general
- L1 = Lampara funcionamiento
- T = Termostato regulable (60-220C)
- Ts = Limitador (245)
- L2 = Lampara calentamiento
- E = Encendedor
- GV1 = Valvula gas (SEGURIDAD) ①
- GV2 = Valvula gas (CONTROL) ①
- TRP = Termopar

Plastico blanco alto brillo

| Esquema teorico adhesivo FG-920 A  |  | X-163050     |                  |  |                                      |
|--|--|--------------|------------------|--|--------------------------------------|
| Nº   | Pieza                                    | Material     | Nº Clasificacion | Acabado                                  |                                      |
| Nº   | Modificacion                             | Propuesta de | Fecha            | Tolerancias generales                    |                                      |
| ①  | Pasar de GV y VG a GV1 y GV2             | Letona       | 97-1-16          | <math>5\pm</math><br>5-25± :<br>25-50± : | 50-100± :<br>> 100± :<br>$\infty\pm$ |
| 2  | Modific.general(pasar a fabric.interior) | Plazaola     | 97-4-23          |  |                                      |
|  |  |              |                  |  |                                      |
| Firma  |  | Fecha        |                  | Mecanizado superficial                   |                                      |
| Dibujado   |  | 96-5-30      |                  |  |                                      |
| Proyectado   |  |              |                  |  |                                      |
| Comprobado   |  |              |                  | Plano numero<br><b>HB-70479</b> -2       |                                      |
| Escala   |  |              |                  |  |                                      |
| <b>FAGOR</b>  |  |              |                  | Sustituye al Nº                          |                                      |
| Fagor Industrial, Koop. Elk, Mugatua   |  |              |                  |  |                                      |
| <b>FREIDORAS</b>   |  |              |                  | Sustituido por                           |                                      |
| Plano hau ez daiteke erabil ez berrizta gure baimenitz gabe  |  |              |                  |  |                                      |

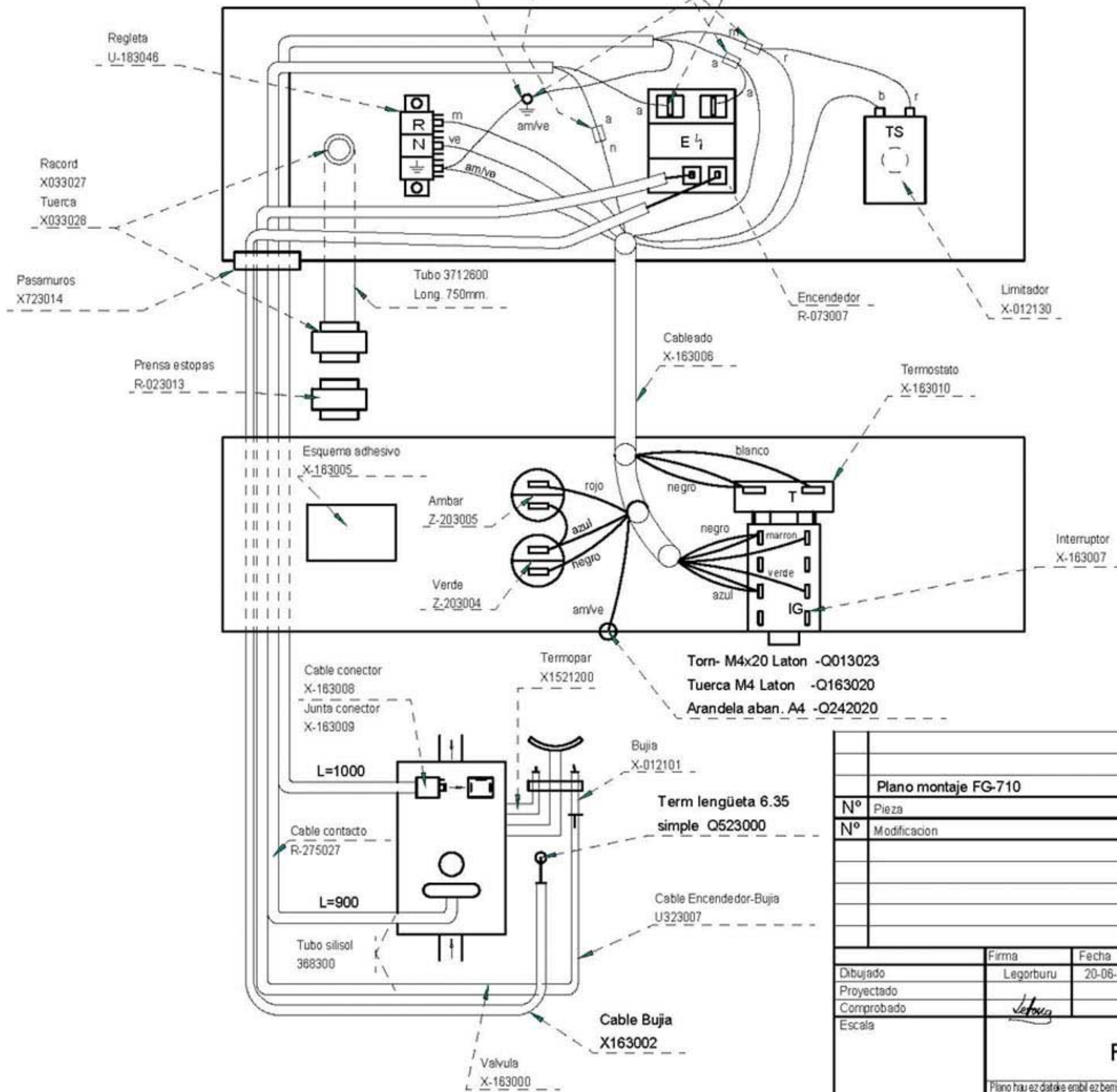


Torn- M4x20 Laton -Q013023  
 Tuerca M4 Laton -Q163020  
 Arandela aban. A4 -Q242020  
 Term lengüeta 6.35 simple-Q523000

Funda para macho Q-578008  
 Terminal macho Q-523001  
 Terminal hembra Q-503005  
 Funda Q-578002

**TOMA EQUIPOTENCIAL**

- Q013023-TORNILLO EXAG M4x20 LATON. ----- 1
- Q163020-TUERCA EXAG M4 LATON.----- 2
- Q221901-TUERCA CUADRADA M4.----- 1
- Q242040-ARANDELA ABANICO A4 AISI 304.----- 2
- Q563004-LENGÜETA COMPONENTES.----- 1
- Z603021-CHAPITA TIERRA.----- 1
- Z603022-PLACA ASIENTO CONEXION MASA.----- 1

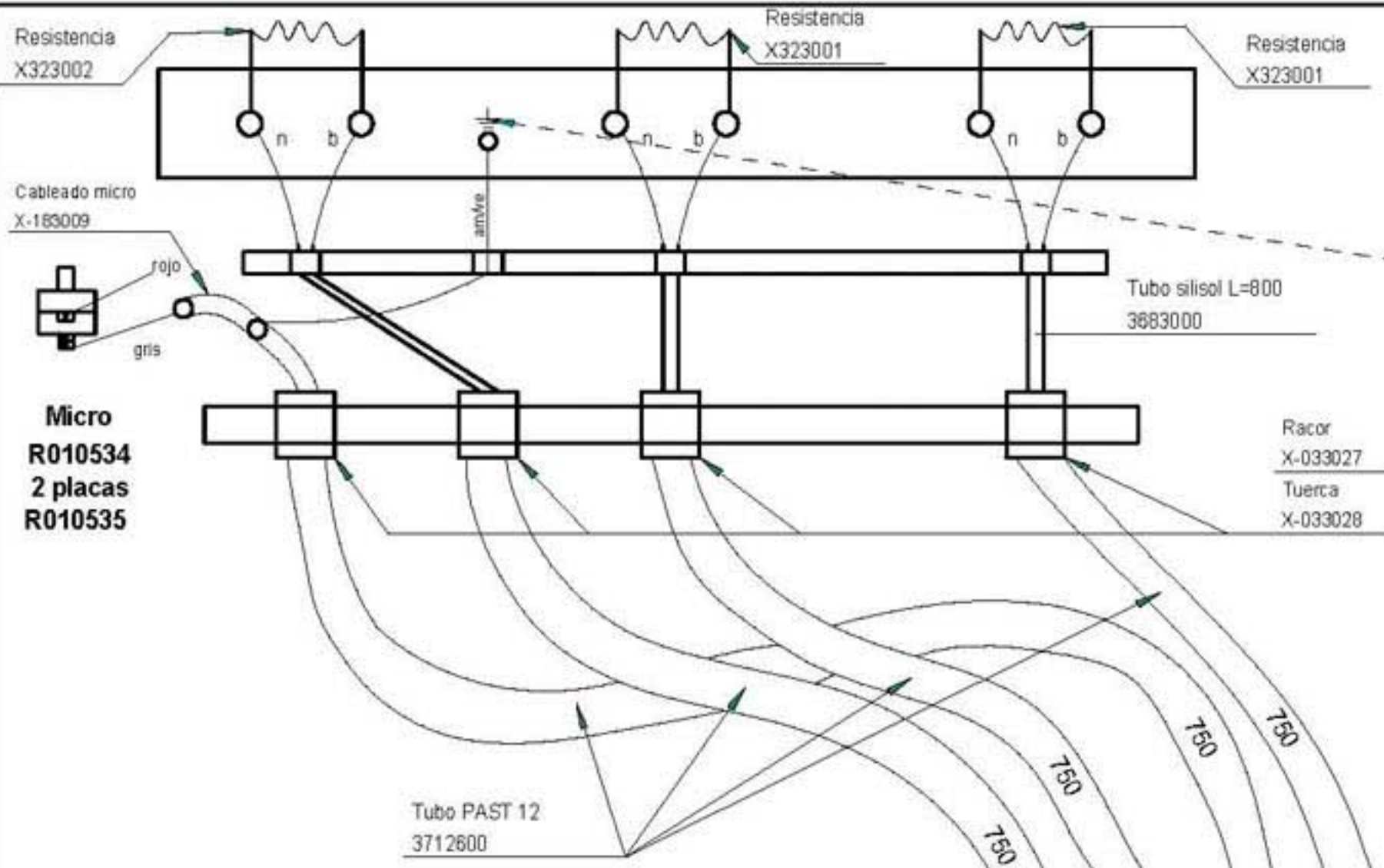


Torn- M4x20 Laton -Q013023  
 Tuerca M4 Laton -Q163020  
 Arandela aban. A4 -Q242020

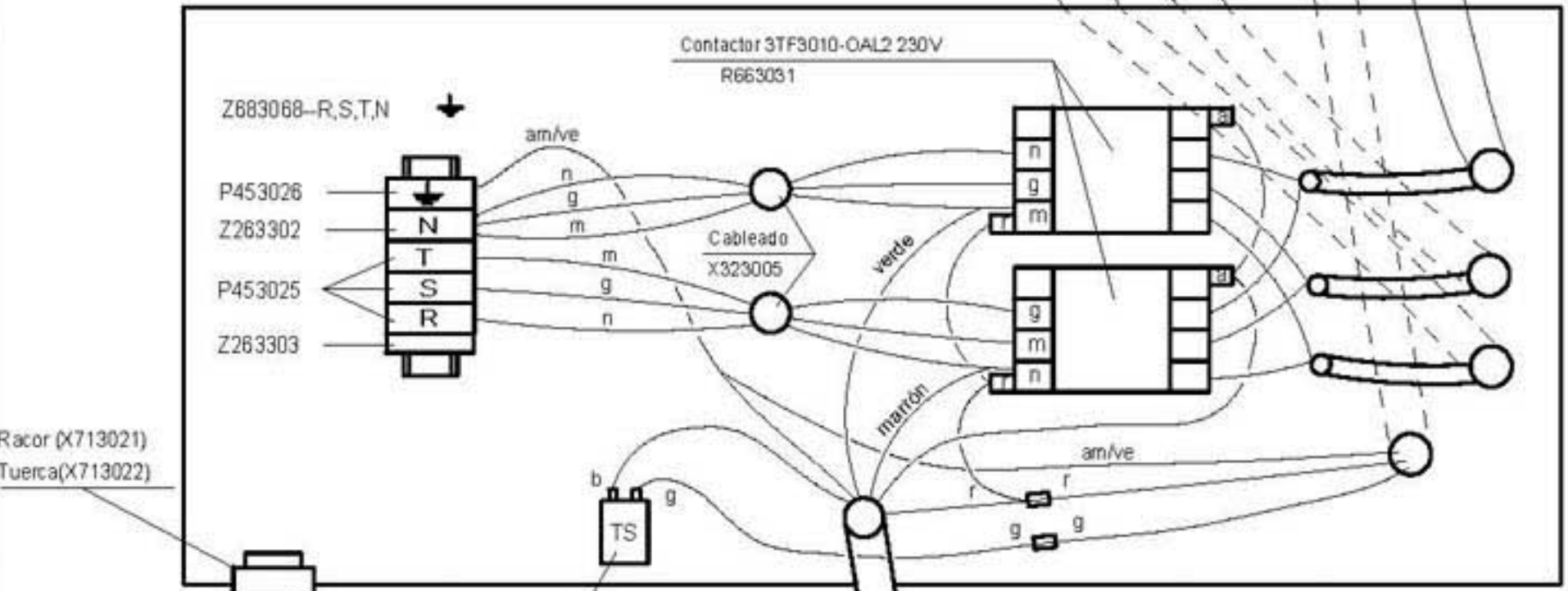
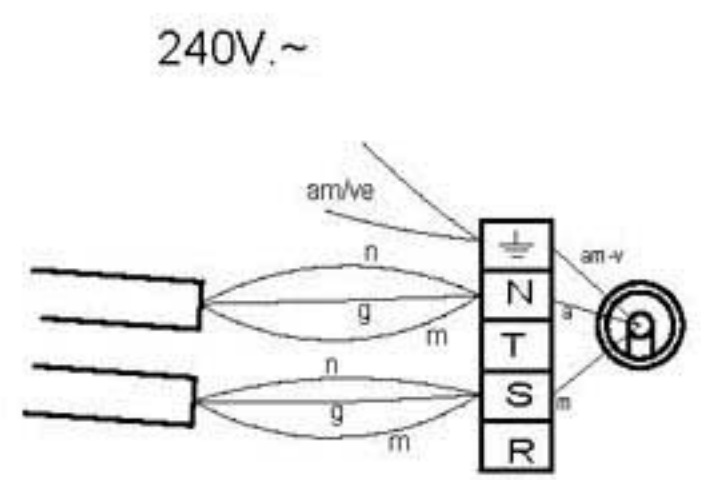
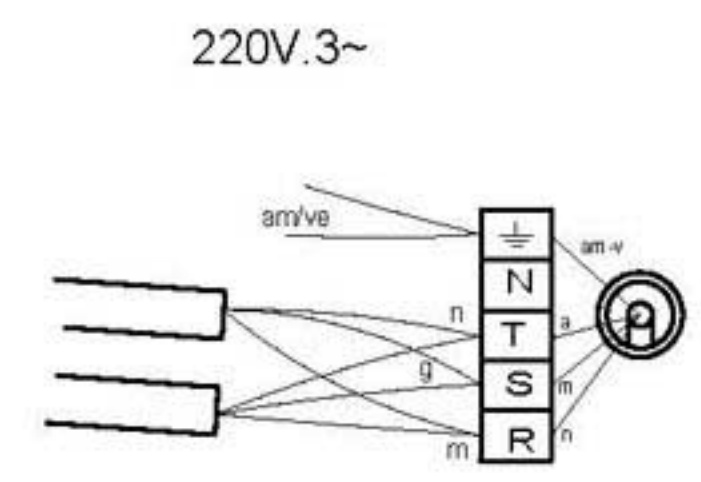
|                      |                  |              |  |                  |   |
|----------------------|------------------|--------------|--|------------------|---|
| Plano montaje FG-710 |                  | X313000      |  |                  |   |
| Nº                   | Pieza            | Cant.        | Material   | Nº Clasificación | Acabado   |
| Nº                   | Modificación     | Propuesta de |  | Fecha            | Tolerancias generales   |
|                      |                  |              |  |                  | <5± : 50-100± :<br>5-25± : >100± :<br>25-50± : <math>\infty\pm</math> |
| Dibujado             | Firma            | Fecha        | <br>Fagor Industrial, Koop Elk, Mugatua |                  | Mecanizado superficial  |
| Proyectado           | Legorburu        | 20-06-95     |  |                  |   |
| Comprobado           | <i>Legorburu</i> |              |  |                  |   |
| Escala               | <b>FREIDORAS</b> |              |  |                  | Plano numero  |
|                      |                  |              |  |                  | <b>HC-71650</b>   |
|                      |                  |              |  |                  | Sustituye al N°   |
|                      |                  |              |  |                  | Sustituido por  |

Plano hau ez daterik erabil ez berrizta gure baimenitz gabe





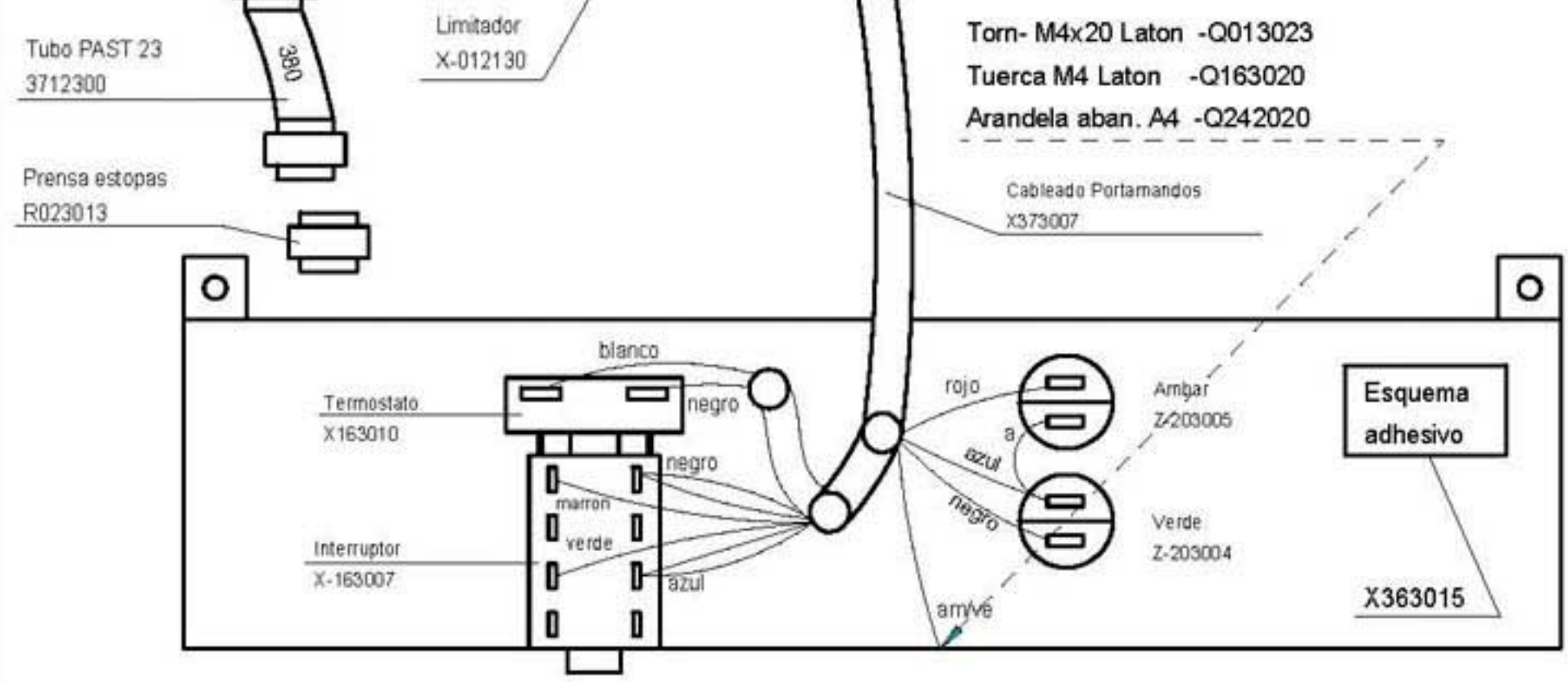
Torn- M4x20 Laton -Q013023  
 Tuerca M4 Laton -Q163020  
 Arandela aban. A4 -Q242020



380...415V.3N~

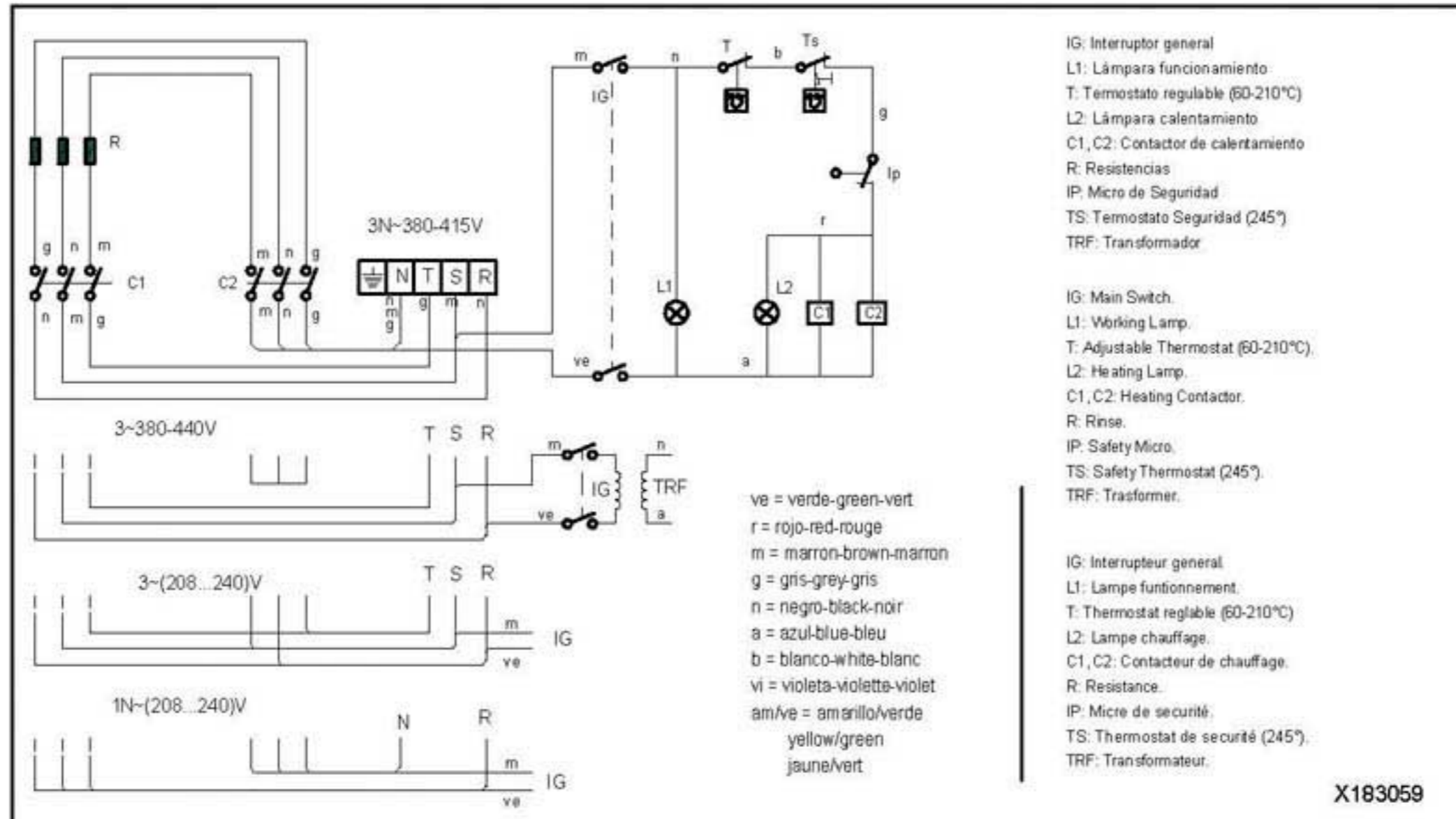
TOMA EQUIPOTENCIAL

- Q013023-TORNILLO EXAG M4x20 LATON. .... 1
- Q163020-TUERCA EXAG M4 LATON..... 2
- Q221901-TUERCA CUADRADA M4..... 1
- Q242040-ARANDELA ABANICO A4 AISI 304..... 2
- Q563004-LENGÜETA COMPONENTES..... 1
- Z603021-CHAPITA TIERRA..... 1
- Z603022-PLACA ASIENTO CONEXION MASA..... 1



| Esquema practico FE-710 |              |              |  | X323003          |  |
|-------------------------|--------------|--------------|--|------------------|--|
| Nº                      | Pieza        | Cant.        | Material   | Nº Clasificacion | Acabado  |
| Nº                      | Modificacion | Propuesta de |  | Fecha            | Tolerancias generales  |
|                         |              |              |  |                  | <math>5\pm</math>      <math>50-100\pm</math><br><math>5-25\pm</math>    <math>>100\pm</math><br><math>25-50\pm</math>    <math>\infty\pm</math> |
| Dibujado                |              | Firma        |  | Fecha            |  |
| Projectado              |              | Legorburu    |  | 21-05-96         |  |
| Comprobado              |              |              |  |                  |  |
| Escala                  |              |              |  |                  |  |
|                         |              |              | <b>FAGOR</b>   |                  | Mecanizado superficial   |
|                         |              |              | Fagor Industrial, Koop. Elk. Mugatua                     |                  | Plano numero<br><b>HC-72123</b>  |
|                         |              |              | <b>FREIDORAS</b>   |                  | Sustituye al N°  |
|                         |              |              | Plano hau ez dateke erabil ez berizta gure baimentz gabe |                  | Sustituido por   |





**NOTAS**

- Las inscripciones resistirán sin modificación apreciable el frotamiento durante 15 seg. de un algodón impregnado en gasolina.

Plastico blanco alto brillo

|  |  |              |                                      |                             |   |
|--|--|--------------|--------------------------------------|-----------------------------|---|
| Esquema teorico adhesivo                                     |  |              |                                      | X183059                     |   |
| Nº   | Pieza                                  | Cant.        | Material                             | Nº Clasificación            | Acabado   |
| Nº   | Modificación                           | Propuesta de |                                      | Fecha                       | Tolerancias generales                           |
| ⓘ  | Introducir texto componentes en placa. | Maillo       |                                      | 14-02-2000                  | <5± : 50-100± :<br>5-25± : >100±<br>25-50± : ∞± |
| Dibujado   | Firma                                  | Fecha        | FAGOR                                |                             | Mecanizado superficial                          |
| Proyectado   | KONTXI                                 | 23/8/98      | Fagor Industrial, Koop. Elk. Mugatua |                             |   |
| Comprobado   |  |              |                                      |                             |   |
| Escala   | 1/1                                    |              |                                      | Plano numero<br>HC-73561 -1 |   |
| Plano hau ez daterke erabil ez berri eta gure baimenitz gabe |  |              |                                      |                             | Sustituido por                                  |