

**Hornos Mixtos Gas  
Fours Mixtes á Gaz  
Combined Gas Ovens  
Gas-Konvektionsöfen  
Forni Misti a Gas**

**SERIE "EVOLUTION"**

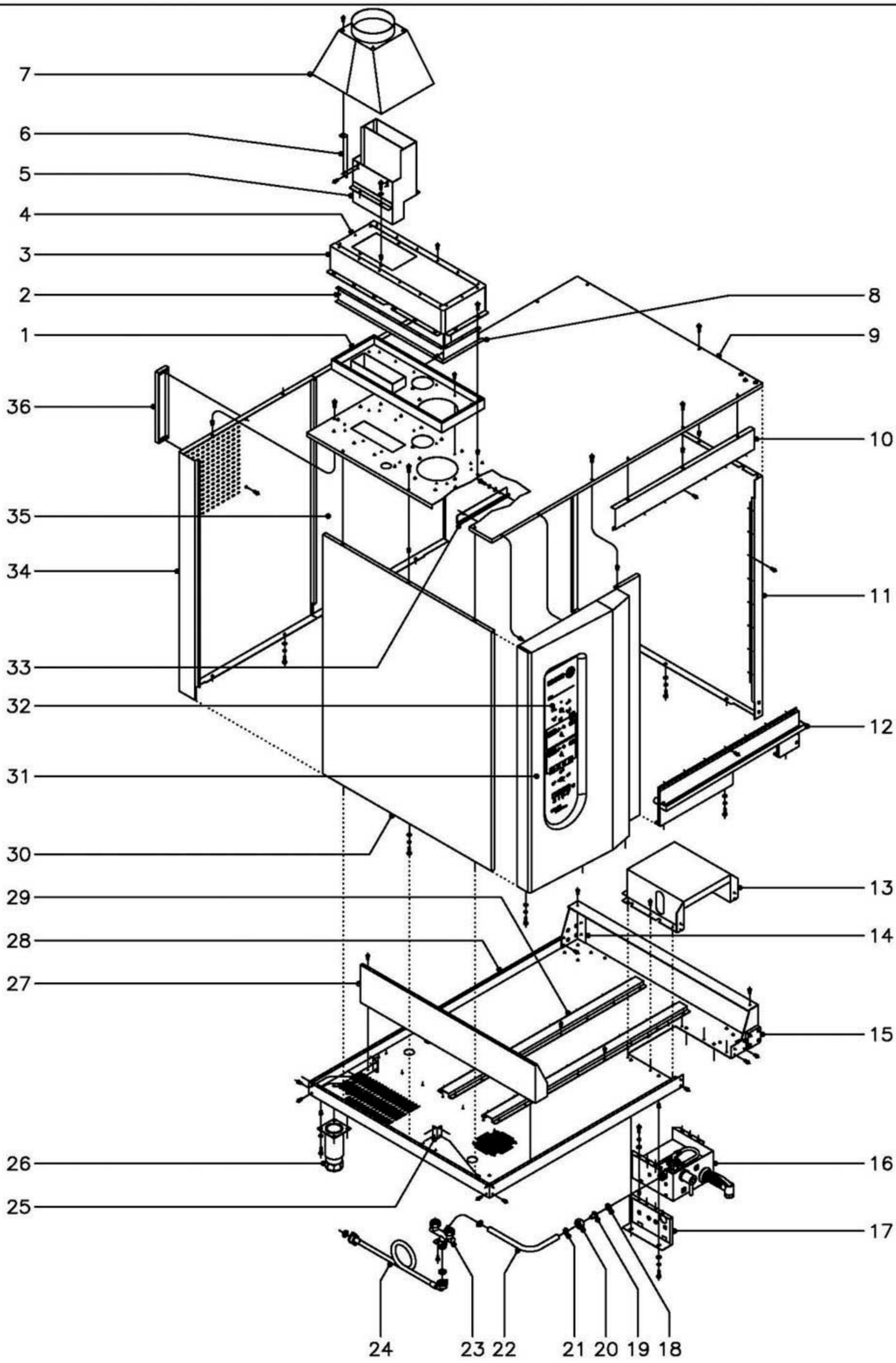
**Modelos:**

**HGV-10/21**

*Febrero 2005 February*

**FAGOR** 

**Fagor Industrial**



N plano C-1625	Firma 	Fecha 2-2005	Aparato MUEBLE HORNO A GAS HGV-10/21	Lamina 1	Fagor Industrial S.Coop. <b>FAGOR</b> Oñate
-------------------	-----------	-----------------	--	-------------	--

MOD.		HORNO A GAS		ZONA	MUEBLE							PLANO	C-1625
ITEM	CODIGO	DENOMINACION	TEXTO	HGV-10/21								NOTAS	
1	T302820	Bandeja de colector completa	Complete tray manifold	1									
	Q412002	Remache tubular Ø4x7,5	Tubular rivet Ø4x7.5	15									
2	T302824	Lateral camara colector	Manifold chamber side	2									
	Q412002	Remache tubular Ø4x7,5	Tubular rivet Ø4x7.5	4									
3	T302822	Anterior colector	Manifold front	1									
	Q152004	Tornillo aplastado M-5x13	Flat screw M-5x13	14									
	Q222011	Remache exagonal M-5	Hexagonal rivet M-5	14									
4	T302823	Posterior de colector	Manifold rear	1									
	Q152004	Tornillo aplastado M-5x13	Flat screw M-5x13	2									
	Q222011	Remache exagonal M-5	Hexagonal rivet M-5	2									
5	Q412002	Remache tubular Ø4x7,5	Tubular rivet Ø4x7.5	21									
	T122816	Salida colector completa	Complete manifold outlet	1									
	Q012031	Tornillo exagonal M-5x10	Hexagonal screw M-5x10	3									
	Q232030	Arandela plana A-5	Flat washer A-5	3									
6	Q222011	Remache exagonal M-5	Hexagonal rivet M-5	3									
	T112815	Soporte chimenea	Chimney holder	4									
7	Q412002	Remache tubular Ø4x7,5	Tubular rivet Ø4x7.5	12									
	T122820	Chimenea exterior completa	Complete external chimney	1									
8	T302825	Posterior y anteri. camara colector	Manifold chamber rear and	2									
9	T302810	Panel superior exterior	Outer upper panel	1									
	Q221342	Remache exagonal M-5	Hexagonal rivet M-5	13									
	Q152004	Tornillo aplastado M-5x13	Flat screw M-5x13	13									
10	T302804	Panel anterior superior	Upper front panel	1									
	Q412002	Remache tubular Ø4x7,5	Tubular rivet Ø4x7.5	7								Amarre a cuba	
11	T302803	Panel exterior derecho	Right outer panel	1									
	Q012042	Tornillo exagonal M-6x15	Hexagonal screw M-6x15	3								Amarre inferior	
	Q262040	Arandela grower A-6	Grower washer A-6	3								Amarre inferior	
	Q232040	Arandela plana A-6	Flat washer A-6	3								Amarre inferior	
	Q221343	Remache exagonal M-6	Hexagonal rivet M-6	3								Amarre inferior	

MOD.		HORNO A GAS		ZONA	MUEBLE							PLANO	C-1625
ITEM	CODIGO	DENOMINACION	TEXTO	HGV-10/21								NOTAS	
	Q412002	Remache tubular Ø4x7,5	Tubular rivet Ø4x7.5	7								Amarre a cuba	
12	T302800	Recogeaguas completo	Complete water collector	1									
	Q012042	Tornillo exagonal M-6x15	Hexagonal screw M-6x15	3								Amarre inferior	
	Q262040	Arandela grower A-6	Grower washer A-6	3								Amarre inferior	
	Q232040	Arandela plana A-6	Flat washer A-6	3								Amarre inferior	
	Q221343	Remache exagonal M-6	Hexagonal rivet M-6	3								Amarre inferior	
	Q412002	Remache tubular Ø4x7,5	Tubular rivet Ø4x7.5	7								Amarre a cuba	
13	T302830	Alojamiento ducha	Shower housing	1									
	Q412002	Remache tubular Ø4x7,5	Tubular rivet Ø4x7.5	13								Amarre a base	
14	T302816	Refuerzo apoyo base posterior	Rear base reinforcement	1									
	Q412002	Remache tubular Ø4x7,5	Tubular rivet Ø4x7.5	6								Amarre a base	
15	T302836	Refuerzo apoyo base anterior com.	Com. front base holder rein	1									
	Q412002	Remache tubular Ø4x7,5	Tubular rivet Ø4x7.5	6								Amarre a base	
	<b>1100002860</b>	<b>KIT DUCHA HORNO 10 / 21</b>	<b>OVEN SHOWER KIT 10 / 2</b>	<b>1</b>									
16	Z279506	Grupo ducha mini	Mini shower group	1								Componente kit	
	Q152004	Tornillo aplastado M-5x13	Flat screw M-5x13	6								Componente kit	
	Q262030	Arandela grower A-5	Grower washer A-5	6								Componente kit	
	Q232030	Arandela plana A-5	Flat washer A-5	6								Componente kit	
	Q221342	Remache exagonal M-5	Hexagonal rivet M-5	6								Componente kit	
17	T302831	Amarre ducha	Shower anchoring	2								Componente kit	
	Q012042	Tornillo exagonal M-6x15	Hexagonal screw M-6x15	3								Componente kit	
	Q262040	Arandela grower A-6	Grower washer A-6	3								Componente kit	
	Q232040	Arandela plana A-6	Flat washer A-6	3								Componente kit	
	Q221343	Remache exagonal M-6	Hexagonal rivet M-6	3								Componente kit	
18	Q306039	Arandela junta Ø25xØ16,1x1,5	Joint washer Ø25xØ16.1x1.	1								Componente kit	
19	T305067	Entrada de agua a ducha	Shower water inlet	1								Componente kit	
20	Q222013	Tuerca 3/4" gas	Nut 3/4" Gas	1								Componente kit	
21	Q881302	Abrazadera 12 - 20	Clamp 12 - 20	2								Componente kit	

ITEM	CODIGO	DENOMINACION	TEXTO	HGV-10/21									NOTAS
22	3676900	tubo de goma Ø17xØ10x850	Rubber tubing Ø17xØ10x850	1									Componente kit
23	T305063	Entrada de agua completa	Complete water inlet	1									Componente kit
	Q012021	Tornillo exagonal M-4x10	Hexagonal screw M-4x10	2									Componente kit
24	Z601114	Manguera entrada de agua	Water inlet hose	1									
	Z701132	Filtro-junta entrada de agua	Filter-joint water inlet	1									
	Q307031	Junta manguera Ø24xØ14x3	Hose joint Ø24xØ14x3	1									
25	T302837	Cantonera base	Base corner protector	2									
	Q412002	Remache tubular Ø4x7,5	Tubular rivet Ø4x7.5	8									Amarre a base
26	X260151	Pata regulable	Adjustable leg	4									
	Q012031	Tornillo exagonal M-5x10	Hexagonal screw M-5x10	16									
	Q242030	Arandela abanico A-5	Fan shaped washer A-5	16									
	Q221342	Remache exagonal M-5	Hexagonal rivet M-5	16									
27	T302815	Apoyo cuerpo de horno	Oven body holder	1									
	Q412002	Remache tubular Ø4x7,5	Tubular rivet Ø4x7.5	13									Amarre a base
28	T302813	Base exterior de horno 10 / 21	Oven outer base 10 / 21	1									
29	T302818	Refuerzo longitudinal base	Base longitudinal reinforcen	2									
	Q412002	Remache tubular Ø4x7,5	Tubular rivet Ø4x7.5	32									Amarre a base
30	T302806	Panel exterior izquierdo	Left outer panel	1									
	Q012042	Tornillo exagonal M-6x15	Hexagonal screw M-6x15	3									Amarre inferior
	Q262040	Arandela grower A-6	Grower washer A-6	3									Amarre inferior
	Q232040	Arandela plana A-6	Flat washer A-6	3									Amarre inferior
	Q221343	Remache exagonal M-6	Hexagonal rivet M-6	3									Amarre inferior
31	T302808	Panel portamandos	Control panel	1									
	Q012042	Tornillo exagonal M-6x15	Hexagonal screw M-6x15	3									Amarre inferior
	Q262040	Arandela grower A-6	Grower washer A-6	3									Amarre inferior
	Q232040	Arandela plana A-6	Flat washer A-6	3									Amarre inferior
	Q221343	Remache exagonal M-6	Hexagonal rivet M-6	3									Amarre inferior
	Q412002	Remache tubular Ø4x7,5	Tubular rivet Ø4x7.5	8									Amarre a cuba
32	T303000	Serigrafia HGV-10 / 21	Serigraphy HGV-10 / 21	1									

MOD.

HORNO A GAS

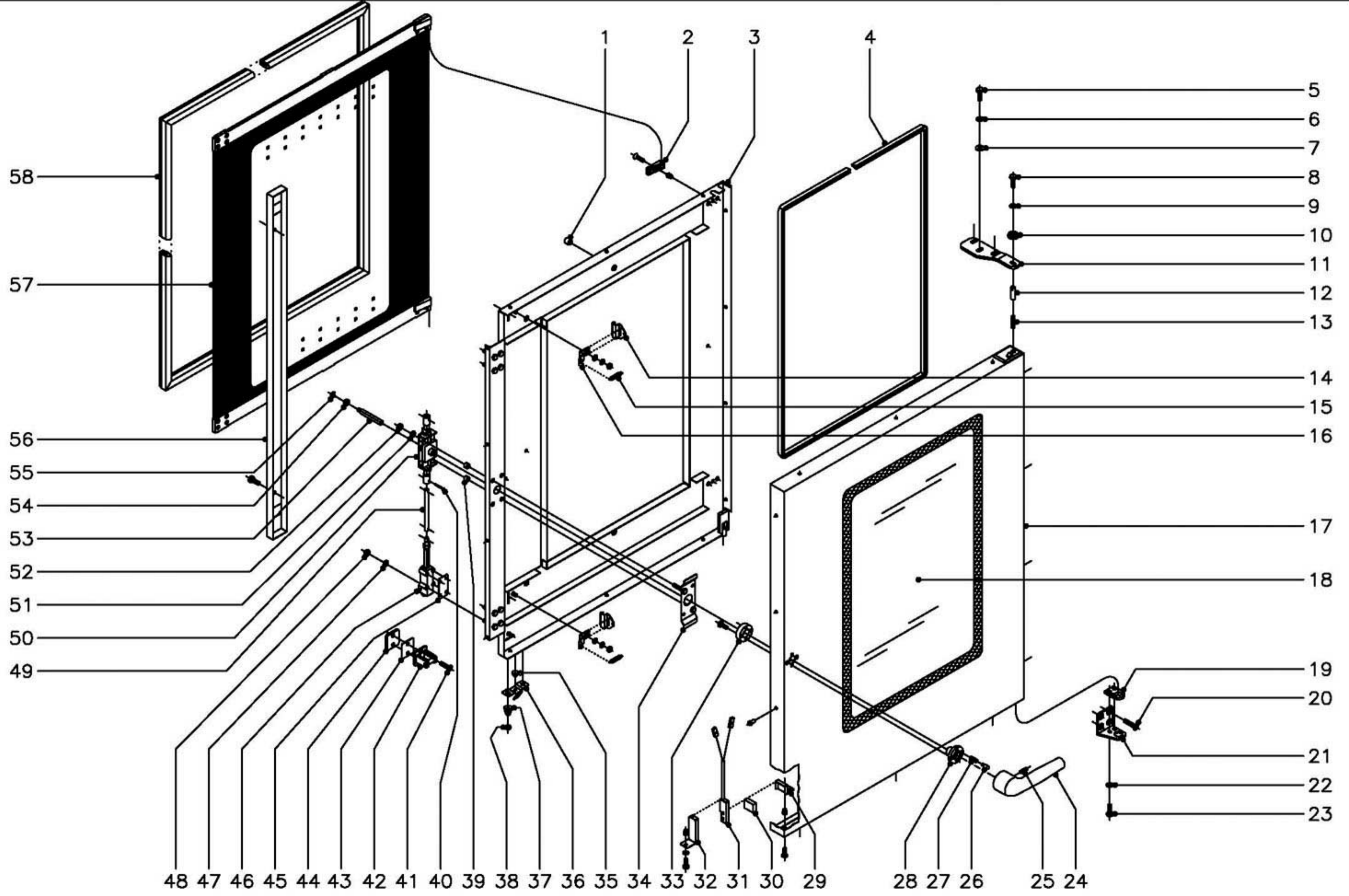
ZONA

MUEBLE

PLANO

C-1625

ITEM	CODIGO	DENOMINACION	TEXTO	HGV-10/21									NOTAS
33	T302834	Canaleta portamandos	Control feed through	1									
	Q012042	Tornillo exagonal M-6x15	Hexagonal screw M-6x15	2									
	Q262040	Arandela grower A-6	Grower washer A-6	2									
	Q232040	Arandela plana A-6	Flat washer A-6	2									
	Q221343	Remache exagonal M-6	Hexagonal rivet M-6	2									
34	T302849	Panel posterior exterior HGV	HGV outer outer rear panel	1									
35	T302850	Panel posterior exterior comun	Common outer rear panel	1									
	Q012042	Tornillo exagonal M-6x15	Hexagonal screw M-6x15	4									Amarre inferior
	Q262040	Arandela grower A-6	Grower washer A-6	4									Amarre inferior
	Q232040	Arandela plana A-6	Flat washer A-6	4									Amarre inferior
	Q221343	Remache exagonal M-6	Hexagonal rivet M-6	4									Amarre inferior
36	T302835	Separador posterior	Rear separator	1									
	Q412002	Remache tubular Ø4x7,5	Tubular rivet Ø4x7.5	2									



N plano C-1626	Firma 	Fecha 2-2005	Aparato PUERTA HORNO A GAS HGV-10/21	Lamina 2	Fagor Industrial S.Coop. <b>FAGOR</b> Oñate
-------------------	-----------	-----------------	--	-------------	--

ITEM	CODIGO	DENOMINACION	TEXTO	HGV-10/21														NOTAS
	<b>1100003101</b>	<b>KIT Puerta completa 10/21</b>	<b>Complete door KIT 10/21</b>	<b>1</b>														
1	T300513	Tope cristal interior	Inner glass door stop	6														
2	R670615	Base de bisagra	Hinge base	2														
	Q042032	Tornillo avellanado M-5x15	Countersunk screw M-5x15	2														
	Q222011	Remache exagonal M-5	Hexagonal rivet M-5	2														
3	T300501	Contrapuerta completa	Complete inner door	1														
4	3715200	Junta cristal L=2500	Glass joint L=2500	1														
5	Q012053	Tornillo exgonal M-8x20	Hexagonal screw M-8x20	3														
6	Q242050	Arandela abanico A-8	Fan shaped washer A-8	3														
7	Q302025	Arandela plana Ø8,4x20x1,5	Flat washer Ø8,4x20x1.5	3														
8	Q012042	Tornillo exagonal M-6x15	Hexagonal screw M-6x15	1														
9	Q242040	Arandela abanico A-6	Fan shaped washer A-6	1														
10	R662807	Arandela amarre puerta	Door anchoring washer	1														
11	T300520	Bisagra superior	Upper hinge	1														
12	R660534	Eje superior	Upper shaft	1														
13	Z850519	Resorte	Spring	1														
14	T300514	Pestillo sujecion cristal interior	Inner glass fastening latch	2														
15	R660605	Muelle tensor pestillo	Latch tensor spring	2														
16	R670612	Base de pestillo	Latch base	2														
	Q302022	Arandela plana Ø16xØ6x1,2	Flat washer Ø16xØ6x1.2	2														
	Q242030	Arandela abanico A-5	Fan shaped washer A-5	2														
	Q162030	Tuerca exagonal M-5	Hexagonal nut M-5	2														
17	T300523	Panel puerta completa	Complete door panel	1														
	Q412002	Remache tubular Ø4x7,5	Tubular rivet Ø4x7.5	14														
18	T300505	Cristal exterior	Outer glass	1														
19	R660549	Guia eje inferior	Lower shaft guide	1														
20	Q062040	Tornillo avellanado M-6x16	Countersunk screw M-6x16	4														
21	T300521	Bisagra inferior	Lower hinge	1														



MOD.		HORNO A GAS		ZONA	PUERTA							PLANO	C-1626
ITEM	CODIGO	DENOMINACION	TEXTO	HGV-10/21									NOTAS
22	Q242040	Arandela abanico A-6	Fan shaped washer A-6	2									
23	Q012041	Tornillo exagonal M-6x10	Hexagonal screw M-6x10	2									
24	T130502	Manilla	Handle	1									
25	Q132042	Varilla roscada M-6x15	Threaded rod M-6x15	1									
26	T130507	Piton enganche	Fastener spike	2									
27	T130506	Resorte	Spring	2									
28	T130515	Guia manilla	Handle guide	1									
29	T300525	Soporte iman	Magnet holder	1									
30	T300526	Iman	Magnet	1									
31	Z100522	Interruptor magnetico	Magnetic switch	1									
32	T302819	Soporte interruptor magnet. puerta	Door magnetic switch holde	1									
	Q221342	Remache exagonal M-5	Hexagonal rivet M-5	1									
	Q242030	Arandela abanico A-5	Fan shaped washer A-5	1									
	Q152004	Tornillo aplastado M-5x13	Flat screw M-5x13	1									
33	T130514	Soporte resortes	Spring holder	1									
	Q032032	Tornillo alomado M-5x15	Curved screw M-5x15	2									
34	T130511	Suplemento fijacion cerradura	Lock fixing supplement	1									
35	T300518	Tapon cierre canaleta	Feed through closing plug	1									
36	T300517	Chapa cierre canaleta	Feed through closing cover	1									
37	T300524	Resorte conico	Conical spring	2									
38	Q162030	Tuerca exagonal M-5	Hexagonal nut M-5	2									
39	Z608410	Casquillo	Bushing	2									
40	Q352001	Pasador de aletas Ø2x15	Cotter pin Ø2x15	4									
41	Q042045	Tornillo avellanado M-6x30	Countersunk screw M-6x30	4									
42	T110506	Enganche	Fastener	2									
43	R660538	Calzo de enganche	Coupling chock	4									
44	T300519	Suplemento enganche	Fastener supplement	2									
45	T080503	Suplemento elemento cierre	Closing element supplemer	6									
46	T080504	Elemento de cierre	Closing component	2									

MOD.

HORNO A GAS

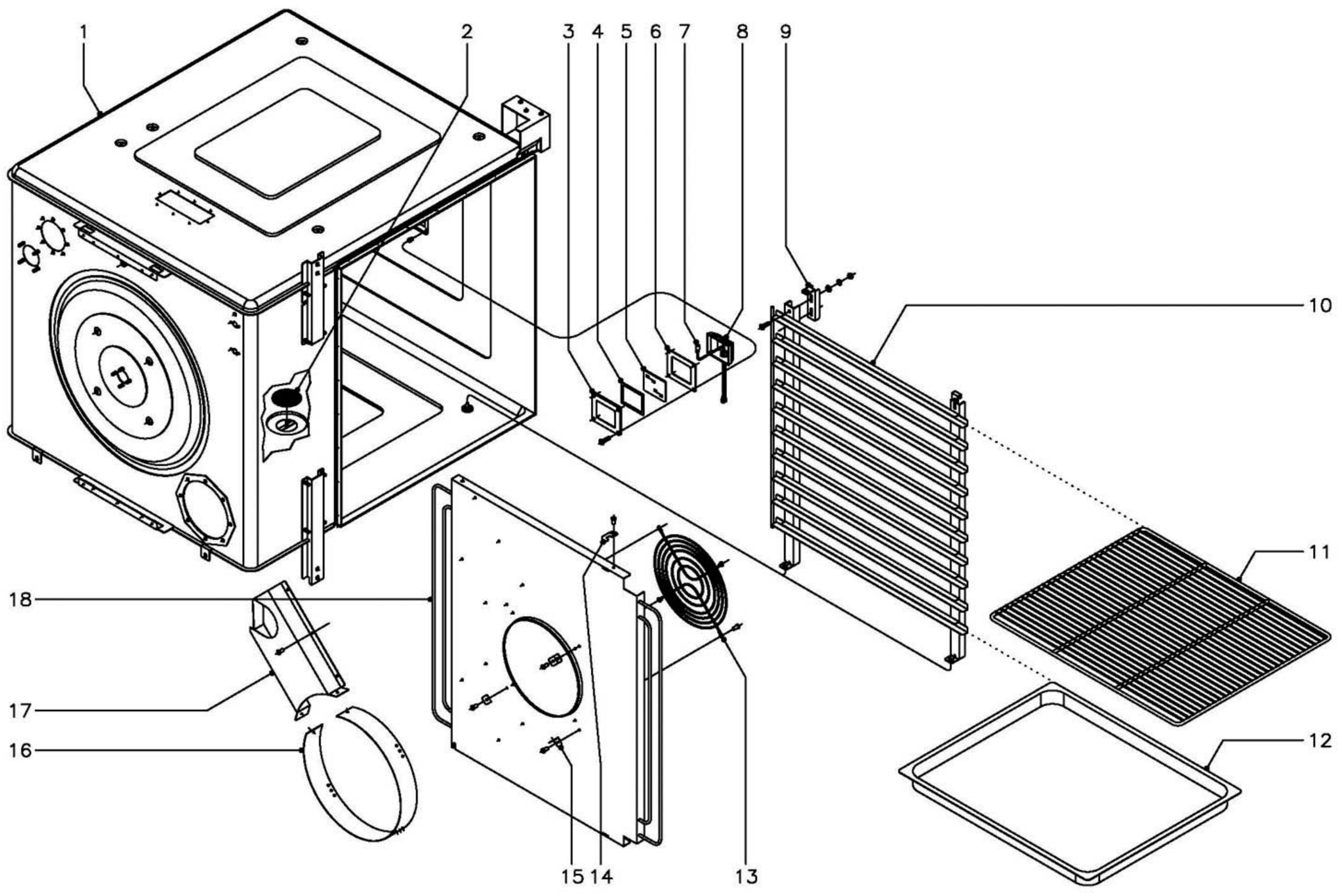
ZONA

PUERTA

PLANO

C-1626

ITEM	CODIGO	DENOMINACION	TEXTO	HGV-10/21										NOTAS
47	Q242030	Arandela abanico A-5	Fan shaped washer A-5	8										
48	Q162030	Tuerca exagonal M-5	Hexagonal nut M-5	8										
49	T300507	Tubo alargadera	Extension tubing	2										
50	T130509	Mecanismo de cierre	Closing mechanism	1										
51	Q262040	Arandela muelle A-6	Spring washer A-6	2										
52	Q162040	Tuerca exagonal M-6	Hexagonal nut M-6	2										
53	T130508	Eje de manilla	Handle shaft	1										
54	T130505	Casquillo	Bushing	1										
55	Q271033	Arandela de seguridad Ø6	Safety washer Ø6	1										
56	T300508	Tapa cierre puerta	Door closing cover	1										
	Q032031	Tornillo alomado M-5x10	Curved screw M-5x10	2										
<b>57</b>	<b>1100003102</b>	<b>KIT Cristal interior compl. 10/21</b>	<b>Complete inner glass 1100</b>	<b>1</b>										
58	T300500	Junta puerta	Door joint	1										



N plano	Firma	Fecha	Aparato	Lamina	Fagor Industrial S.Coop. <b>FAGOR</b>
C-1627		2-2005	MUEBLE INTERIOR HORNO A GAS HGV-10/21	3	Orate

MOD.

HORNO A GAS

ZONA

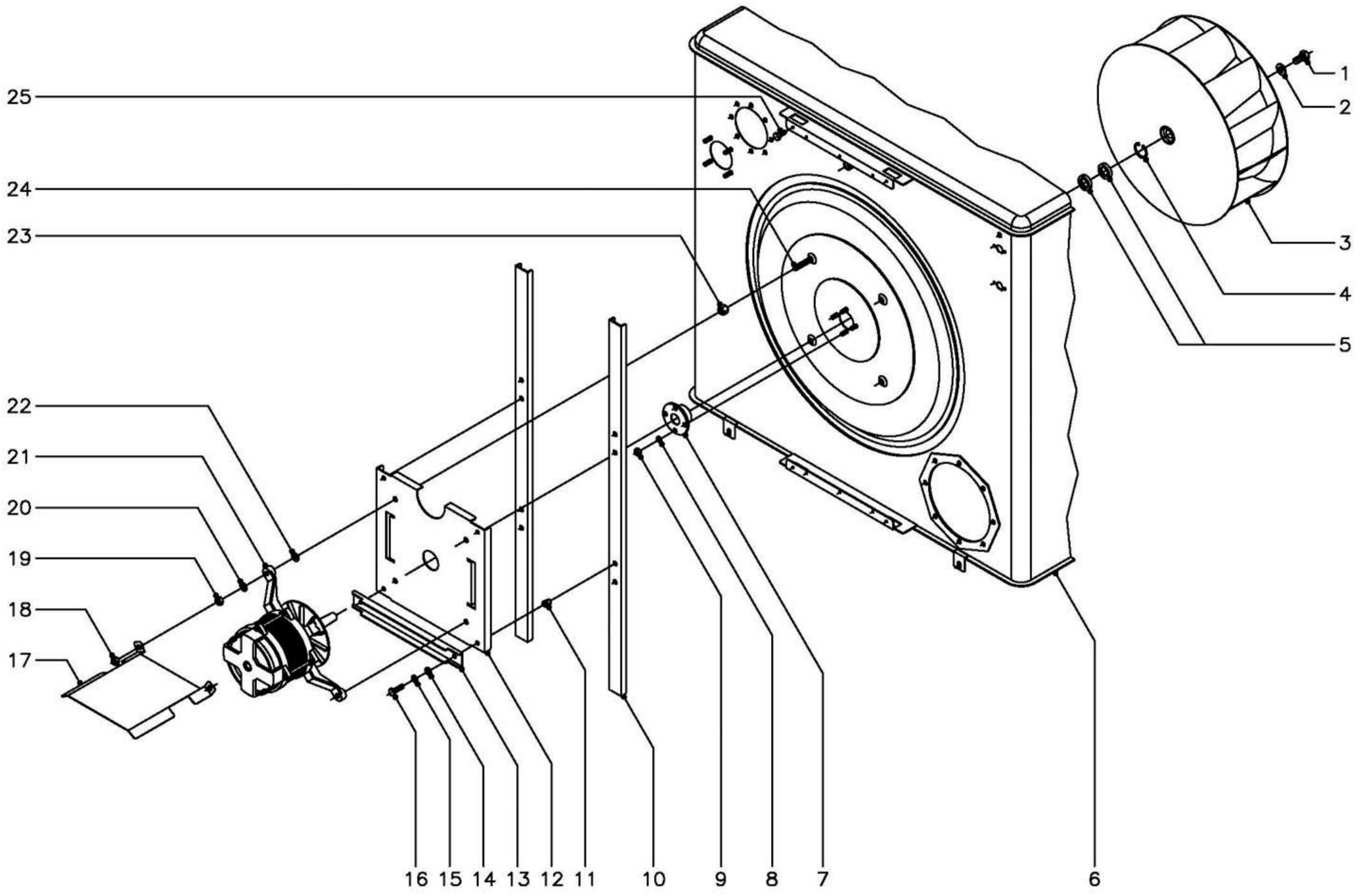
MUEBLE INTERIOR

PLANO

C-1627

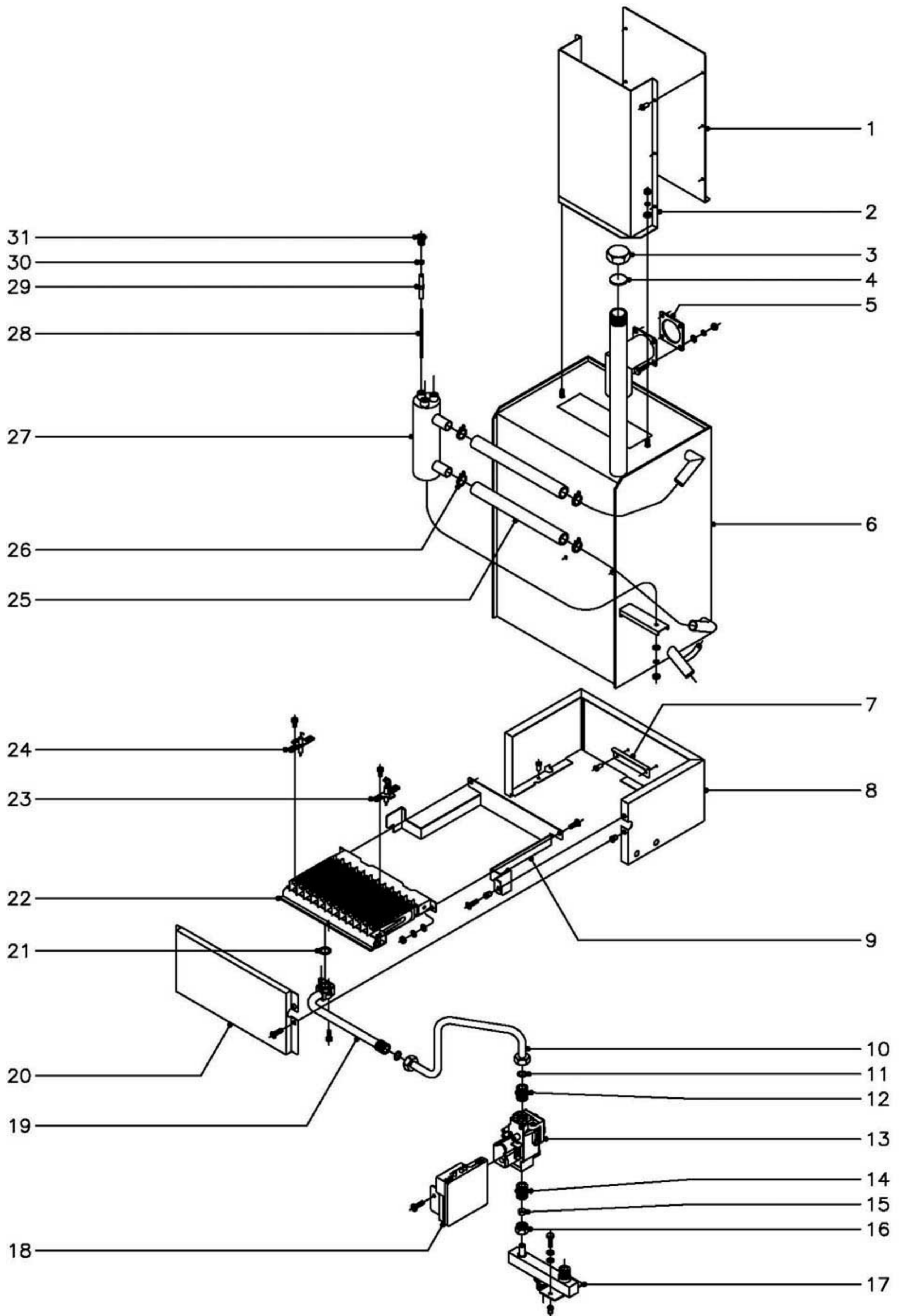
ITEM	CODIGO	DENOMINACION	TEXTO	HGV-10/21															NOTAS
1	T302600	Cuerpo interior completo	Complete inner body	1															
2	T302625	Filtro desague completo	Complete waste pipe filter	1															
3	T303047	Pletina amarre lampara	Lamp anchoring platen	1															
	Q042022	Tornillo avellanado M-4x15	Countersunk screw M-4x15	4															
	Q222041	Remache exagonal M-4	Hexagonal rivet M-4	4															
4	T303027	Junta interior lampara	Lamp inner joint	1															
5	T303025	Cristal lampara	Lamp glass	1															
6	T303026	Junta exterior lampara	Lamp outer joint	1															
7	R663013	Lampara 10 W., 12 V.	Lamp 10 W, 12 V	1															
8	T303023	Portalamparas	Lamp holder	1															
9	T302660	Suplemento guias	Guide supplement	2															
	Q152004	Tornillo aplastado M-5x13	Flat screw M-5x13	4															
	Q302022	Arandela plana Ø16xØ6x1,2	Flat washer Ø16xØ6x1.2	4															
	Q242030	Arandela abanico A-5	Fan shaped washer A-5	4															
	Q162030	Tuerca exagonal M-5	Hexagonal nut M-5	4															
10	T302620	Conjunto guias derecho	Right guide set	1															
s/n	T302624	Conjunto guias izquierdo	Left guide set	1															
11	R682676	Parrilla de horno G.N.-2/1	Oven grill G.N.-2/1	1															
12	R032605	Bandeja de horno G.N.-2/1, h=40	Oven tray G.N.-2/1, h=40	1															
13	R662661	Proteccion de turbina	Turbine protection	1															
	Q412002	Remache tubular Ø4x7,5	Tubular rivet Ø4x7.5	4															
14	T302635	Enganche cubreventilador	Fan cover fastener	2															
	Q412002	Remache tubular Ø4x7,5	Tubular rivet Ø4x7.5	2															
15	T302643	Fijacion suplemento cubreventilad.	Fan cover suplement bindin	3															
	Q412002	Remache tubular Ø4x7,5	Tubular rivet Ø4x7.5	3															
16	T302642	Suplemento cubreventilador	Fan cover supplement	1															
	Q412002	Remache tubular Ø4x7,5	Tubular rivet Ø4x7.5	3															
17	T302641	Conducto de humos HGV	HGV smoke conduct	1															
	Q412002	Remache tubular Ø4x7,5	Tubular rivet Ø4x7.5	6															

ITEM	CODIGO	DENOMINACION	TEXTO	HGV-10/21									NOTAS
18	T302633	Cubreventilador completo	Complete fan cover	1									
	T302650	Aislante techo 970x850x20	Roof insulator 970x850x20	3									Vitrofib
	T302650	Aislante base 970x850x20	Base insulator 970x850x20	1									Vitrofib
	T302651	Aislante lateral decho. 890x850x20	Right side insulator 890x850x20	2									Vitrofib
	T302653	Aislante lateral izdo. 1230x900x10	Left side insulator 1230x900x10	1									Filtro con alumi.
	T302654	Aislante lat. Izdo.inferi. 860x160x10	Side insulator Lower left 860x160x10	1									Filtro con alumi.
	T302659	Aislante izdo. motor 265x265x10	Motor left insulator 265x265x10	1									Filtro con alumi.
	T302652	Aislante posterior 970x880x20	Rear insulator 970x880x20	2									Vitrofib
	T302658	Aislante frontal vertical 1000x30x10	Front vertical insulator 1000x30x10	1									Filtro con alumi.
	T322604	Aislante portamand. 1000x120x20	Control insulator 1000x120x20	1									Filtro con alumi.
	T302667	Arandela sujecion aislante	Insulator fixing washer	13									
	Q221026	Clip sujecion rapida D-4	Quick fastening clip D-4	13									



N plano C-1628	Firma 	Fecha 2-2005	Aparato TURBINA HORNO A GAS HGV-10/21	Lamina 4	Fagor Industrial S.Coop. <b>FAGOR</b>
-------------------	-----------	-----------------	---	-------------	---------------------------------------

MOD.		HORNO A GAS		ZONA		TURBINA						PLANO		C-1628	
ITEM	CODIGO	DENOMINACION	TEXTO	HGV-10/21										NOTAS	
1	Q012063	Tornillo exagonal M-10x20	Hexagonal screw M-10x20	1											
2	R763010	Arandela seguridad Hanning	Hanning safety washer	1											
3	T303015	Turbina	Turbine	1											
4	Q302023	Anillo de seguridad Ø 28x1,2	Safety ring Ø 28x1.2	1											
5	R662627	Reten Ø 28xØ 17x7	Retainer Ø 28xØ 17x7	2											
6	-	Costado izquierdo de horno	Left side of oven	1											
7	T302629	Casquillo reten	Bushing retainer	1											
8	Q262040	Arandela grower A-6	Grower washer A-6	4											
9	Q162040	Tuerca exagonal M-6	Hexagonal nut M-6	4											
10	T302628	Perfil soporte motor	Motor holder profile	2											
11	Q221342	Remache exagonal M-5	Hexagonal rivet M-5	4											
12	T302627	Soporte motor	Motor holder	1											
13	T302649	Refuerzo motor	Motor reinforcement	2											
14	Q232030	Arandela plana A-5	Flat washer A-5	4											
15	Q242030	Arandela abanico A-5	Fan shaped washer A-5	4											
16	Q012032	Tornillo exagonal M-5x15	Hexagonal screw M-5x15	4											
17	T302665	Tejadillo motor	Motor roof	1											
18	Q162050	Tuerca exagonal M-8	Hexagonal nut M-8	2											
19	Q162050	Tuerca exagonal M-8	Hexagonal nut M-8	4											
20	Q242050	Arandela abanico A-8	Fan shaped washer A-8	4											
21	T323022	Motor de turbina	Turbine motor	1											
22	Q232050	Arandela plana A-8	Flat washer A-8	4											
23	T302638	Distanciador motor	Motor spacer	4											
24	Q012056	Tornillo exagonal M-8x40	Hexagonal screw M-8x40	4											
25	Q012031	Tornillo exagonal M-5x10	Hexagonal screw M-5x10	4											





ITEM	CODIGO	DENOMINACION	TEXTO	HGV-10/21								NOTAS
1	T302637	Posterior chimenea generador	Generator chimney rear	1								
	Q412002	Remache tubular Ø4x7,5	Tubular rivet Ø4x7.5	6								
2	T302636	Anterior chimenea generador	Generator chimney front	1								
	Q302022	Arandela plana Ø16xØ6x1,2	Flat washer Ø16xØ6x1.2	2								
	Q242030	Arandela abanico A-5	Fan shaped washer A-5	2								
	Q162030	Tuerca exagonal M-5	Hexagonal nut M-5	2								
3	R015010	Tuerca tapon 1"	Plug nut 1"	1								
4	R015011	Arandela junta Ø34x3	Joint washer Ø34x3	1								
5	T115037	Junta entrada vapor	Vapour inlet joint	1								
6	T305020	Generador vapor completo	Complete steam generator	1	KIT GENERADOR COMPLETO	COMPLETE KIT	GENERATOR					1100003107
	Q012042	Tornillo exagonal M-6x15	Hexagonal screw M-6x15	4								
	Q232040	Arandela plana A-6	Flat washer A-6	4								
	Q262040	Arandela grower A-6	Grower washer A-6	4								
	Q162040	Tuerca exagonal M-6	Hexagonal nut M-6	4								
	T305057	Aislante posterior generador	Generator back insulator	1								
	T305058	Aislante anterior generador	Generator front insulator	1								
	T115064	Aislante lateral generador	Generator side insulator	1								
	T305059	Aislante lateral derecho	Right side insulator	1								
	T305060	Aislante superior generador	Generator upper insulator	1								
7	T305707	Apoyo quemador	Burner holder	1								
	Q412002	Remache tubular Ø4x7,5	Tubular rivet Ø4x7.5	2								
8	T305704	Caja de quemador	Burner box	1								
	Q412002	Remache tubular Ø4x7,5	Tubular rivet Ø4x7.5	3								
	T305061	Aislante caja quemador	Burner box insulator	1								
9	T305706	Escuadra amarre quemador	Burner anchoring bracket	1								
	Q221342	Remache exagonal M-5	Hexagonal rivet M-5	1								
	Q152004	Tornillo aplastado M-5x13	Flat screw M-5x13	1								
10	T305018	Conduccion gas generador comp.	Comp. generator gas condu	1								
11	Q306012	Arandela junta Ø18xØ13x1,5	Joint washer Ø18xØ13x1.5	2								

MOD.

HORNO A GAS

ZONA

GENERADOR DE VAPOR

PLANO

C-1629

ITEM	CODIGO	DENOMINACION	TEXTO	HGV-10/21															NOTAS
12	S205023	Manguito doble 1/2"	Double sleeve 1/2"	1															
13	T305054	Valvula generador	Generator valve	1															
14	S205023	Manguito doble 1/2"	Double sleeve 1/2"	1															
15	U055043	Bicono Ø12	Bicone Ø12	1															
16	Q221334	Tuerca 1/2"	Nut 1/2"	1															
17	T305044	Entrada de gas completa	Complete gas inlet	1															
	Q012032	Tornillo exagonal M-5x15	Hexagonal screw M-5x15	2															
	Q242030	Arandela abanico A-5	Fan shaped washer A-5	2															
	Q232030	Arandela plana A-5	Flat washer A-5	2															
	Q221342	Remache exagonal M-5	Hexagonal rivet M-5	2															
18	T303013	Control de encendido	Ignition control	1															
	Q032011	Tornillo alomado M-3x10	Curved screw M-3x10	1															
19	T115713	Acoplador completo	Complete coupler	1															
	Q151320	Tornillo alomado M-4x6	Curved screw M-4x6	2															
20	T305705	Tapa caja quemador	Burner box cover	1															
	Q152004	Tornillo aplastado M-5x13	Flat screw M-5x13	1															
	Q221342	Remache exagonal M-5	Hexagonal rivet M-5	1															
	T305062	Aislante tapa quemador	Burner cover insulator	1															
21	Z955807	Arandela junta de corcho	Cork joint washer	1															
22	Z955801	Quemador CA-16680	Burner CA-16680	1															
	Q042022	Tornillo avellanado M-4x15	Countersunk screw M-4x15	2															
	Q232020	Arandela plana A-4	Flat washer A-4	2															
	Q242020	Arandela abanico A-4	Fan shaped washer A-4	2															
	Q163020	Tuerca exagonal M-4	Hexagonal nut M-4	2															
23	Z955802	Electrodo ignicion	Ignition electrode	1															
	Q153021	Tornillo alomado M-4x10	Curved screw M-4x10	1															
24	Z955803	Electrodo deteccion	Detection electrode	1															
	Q153021	Tornillo alomado M-4x10	Curved screw M-4x10	1															
25	3715600	Tube silicona Ø26xØ18x250	Silicone tubing Ø26xØ18x250	2															

MOD.

HORNO A GAS

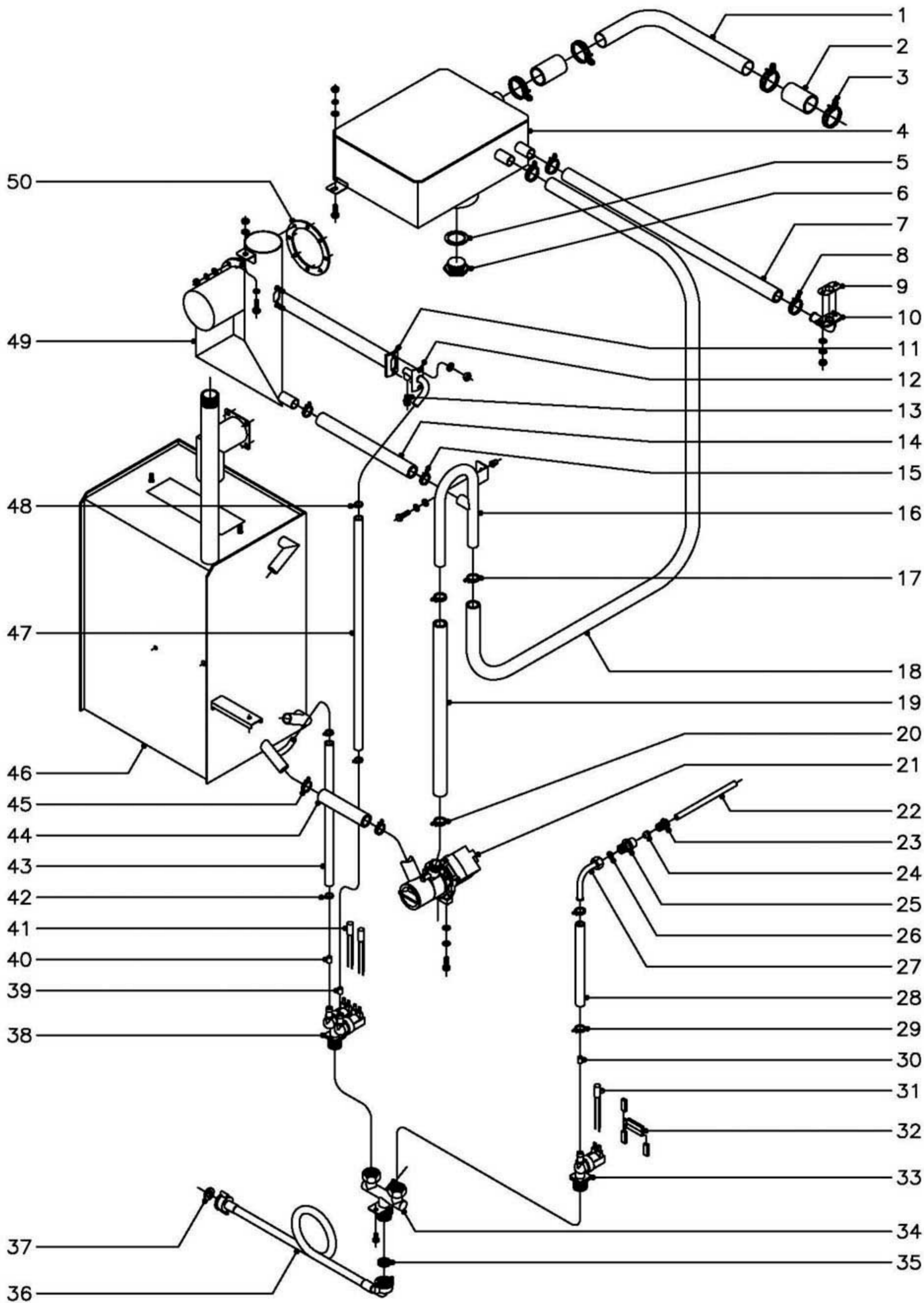
ZONA

GENERADOR DE VAPOR

PLANO

C-1629

ITEM	CODIGO	DENOMINACION	TEXTO	HGV-10/21															NOTAS
26	Q901311	Abrazadera elastica Ø26,7 - 28,1	Elastic clamp Ø26.7 - 28.1	4															
27	T325040	Cuerpo niveles completo	Complete levels body	1															
	Q232040	Arandela plana A-6	Flat washer A-6	1															
	Q262040	Arandela grower A-6	Grower washer A-6	1															
	Q162040	Tuerca exagonal M-6	Hexagonal nut M-6	1															
28	R345060	Electrodo nivel alto	High level electrode	1															
	R345063	Electrodo nivel bajo	Low level electrode	1															
	R345064	Electrodo de masa	Earth electrode	1															
29	R345059	Guia aislante de electrodos	Electrode insulator guide	3															
30	Q163020	Tuerca exagonal M-4	Hexagonal nut M-4	6															
31	R345058	Racord amarre electrodos	Electrodes anchoring adapt	3															



N plano  
C-1630

Firma  
*[Signature]*

Fecha  
2-2005

Aparato CONDUCCIONES AGUA, VAPOR Y DESAGUE  
HORNO A GAS HGV-10/21

Lamina  
6

Fogor Industrial S.Coop. **FAGOR**  
Onate

ITEM	CODIGO	DENOMINACION	TEXTO	HGV-10/21									NOTAS
1	T305075	Conducto desagüe horno	Oven drain conduct	1									
2	3714100	Tubo silicona Ø38xØ31x60	Silicone tubing Ø38xØ31x60	2									
3	Q901307	Abrazadera elastica Ø37,7 - 39,7	Elastic clamp Ø26.7 - 39.7	4									
4	T305072	Caja desagüe completa	Complete drainage box	1									
	Q012042	Tornillo exagonal M-6x15	Hexagonal screw M-6x15	2									
	Q232040	Arandela plana A-6	Flat washer A-6	2									
	Q262040	Arandela grower A-6	Grower washer A-6	2									
	Q162040	Tuerca exagonal M-6	Hexagonal nut M-6	2									
5	T305053	Junta desagüe	Waste pipe joint	1									
6	T305052	Tapon desagüe	Waste pipe plug	1									
7	3715600	Tubo silicona Ø26xØ18x600	Silicone tubing Ø26xØ18x600	1									Recogeaguas a desague
8	Q901311	Abrazadera elastica Ø26,7 - 28,1	Elastic clamp Ø26.7 - 28.1	2									
9	T302845	Junta recogeaguas	Water collector joint	1									
10	T302844	Desague recogeaguas	Water collection waste pipe	1									
	Q232030	Arandela plana A-5	Flat washer A-5	2									
	Q242030	Arandela abanico A-5	Fan shaped washer A-5	2									
	Q162030	Tuerca exagonal M-5	Hexagonal nut M-5	2									
11	R725159	Junta tubo inyector	Pipe injector joint	1									
12	T115112	Conduccion vahos completa	Complete vapour conductio	1									
	Q242030	Arandela abanico A-5	Fan shaped washer A-5	2									
	Q162030	Tuerca exagonal M-5	Hexagonal nut M-5	2									
13	T115086	Tobera R.1/8" (Ø1,5)	Nozzle R.1/8" (Ø10.5)	1									
14	3715600	Tubo silicona Ø26xØ18x250	Silicone tubing Ø26xØ18x250	1									
15	Q901311	Abrazadera elastica Ø26,7 - 28,1	Elastic clamp Ø26.7 - 28.1	2									
16	T305019	Conduccion desague general com.	Com. general waste pipe co	1									
17	Q901311	Abrazadera elastica Ø26,7 - 28,1	Elastic clamp Ø26.7 - 28.1	2									
18	3715600	Tubo silicona Ø26xØ18x900	Silicone tubing Ø26xØ18x900	1									
19	3715600	Tubo silicona Ø26xØ18x400	Silicone tubing Ø26xØ18x400	1									
20	Q901311	Abrazadera elastica Ø26,7 - 28,1	Elastic clamp Ø26.7 - 28.1	2									

ITEM	CODIGO	DENOMINACION	TEXTO	HGV-10/21										NOTAS
21	Z220901	Bomba desague ( 50Hz.)	Waste pipe pump (50 Hz)	1										
21	Z223501	Bomba desague ( 60Hz.)	Waste pipe pump (60 Hz)	1										
	Q012032	Tornillo exagonal M-5x15	Hexagonal screw M-5x15	2										
	Q242030	Arandela abanico A-5	Fan shaped washer A-5	2										
	Q232030	Arandela plana A-5	Flat washer A-5	2										
22	R665024	Tubo conduccion inyector	Injector conduction tubing	1										
23	R695003	Manguito cierre	Closing sleeve	1										
24	R695004	Bicono	Bicone	1										
25	-	Casquillo soldado a cuerpo horno	Bushing welded onto oven b	1										
26	Q306026	Arandela junta Ø14xØ8,5x1,5	Seal washer Ø14xØ8.5x1.5	1										
27	R695017	Tubo conduccion agua completo	Complete water conduction	1										
28	3676900	Tubo goma negra Ø17xØ10x900	Black rubber tubing Ø17xØ	1										
29	Q901310	Abrazadera elastica Ø16,8 - 17,7	Elastic clamp Ø16.8 - 17.7	2										
30	R665041	Regulador caudal 0,25 l./min. (rosa)	Flow regulator 0.25 l/min (p	1										
31	Z233012	Condensador antiparasitario	Antiparasistic condensor	1										
32	T323027	PTC Electrovalvula 5"	PTC Solenoide valve 5"	1										
33	Z701135	Electrovalvula entrada de agua	Water inlet solenoide valve	1										
34	T305063	Entrada agua completa	Complete water inlet	1										
	Q012021	Tornillo exagonal M-4x10	Hexagonal screw M-4x10	2										
35	Z701132	Filtro-junta entrada de agua	Filter-joint water inlet	1										
36	Z601114	Manguera entrada de agua	Water inlet hose	1										
37	Q307031	Junta manguera Ø24xØ14x3	Hose joint Ø24xØ14x3	1										
38	P255001	Electrovalvula doble	Double solenoide valve	1										
39	P443042	Regulador caudal 3 l./min. (negro)	Flow regulator 3 l/min (black	1										
40	Z601156	Regulador caudal 8 l./min. (rojo)	Flow regulator 8 l/min (red)	1										
41	Z233012	Condensador antiparasitario	Antiparasistic condensor	2										
42	Q901310	Abrazadera elastica Ø16,8 - 17,7	Elastic clamp Ø16.8 - 17.7	2										
43	3676900	Tubo goma negra Ø17xØ10x300	Black rubber tubing Ø17xØ	1										
44	3715600	Tubo silicona Ø26xØ18x400	Silicone tubing Ø26xØ18x4	1										

MOD.

HORNO A GAS

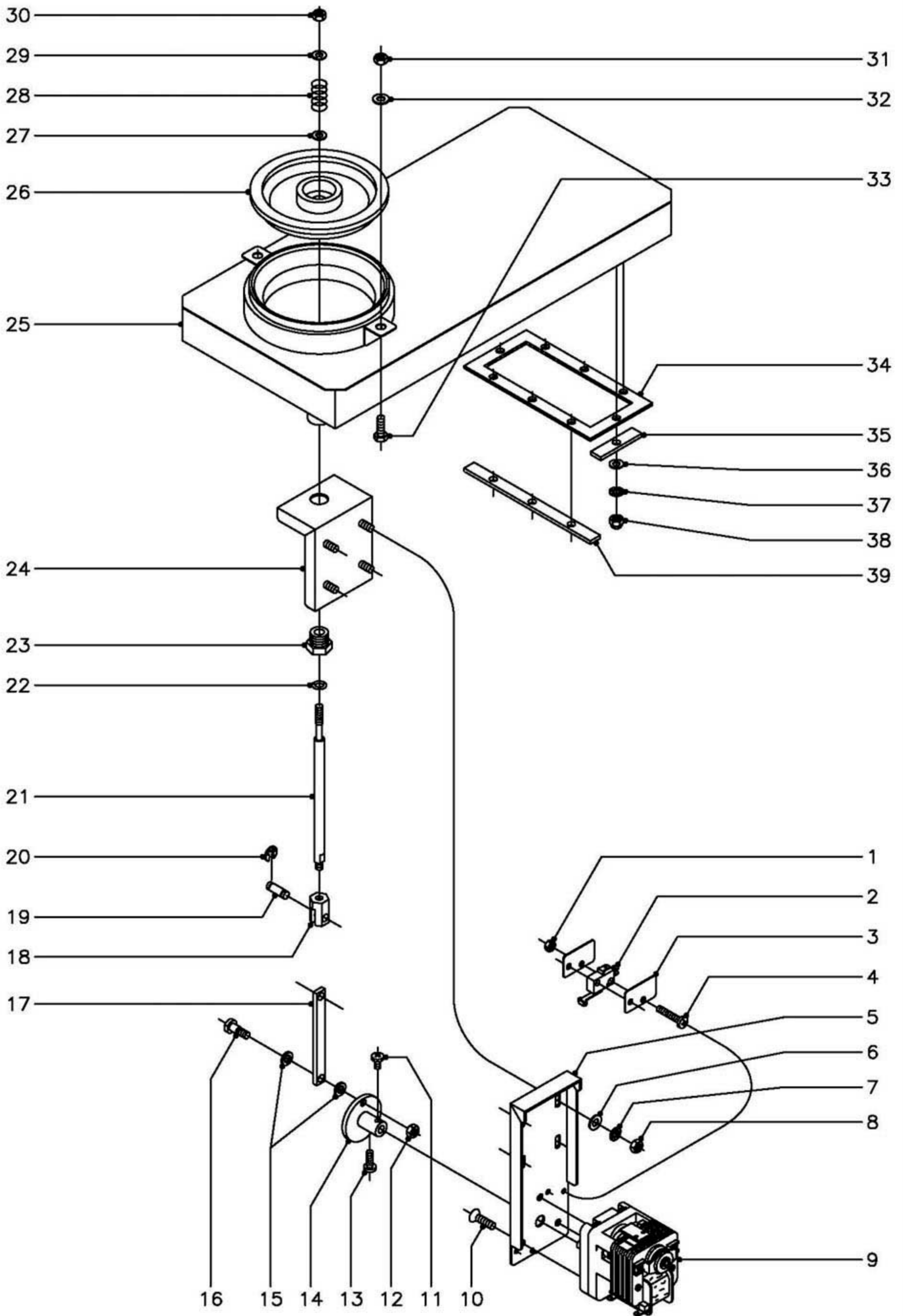
ZONA

CONDUCCIONES AGUA, VAPOR Y DESAGUE

PLANO

C-1630

ITEM	CODIGO	DENOMINACION	TEXTO	HGV-10/21									NOTAS
45	Q901311	Abrazadera elastica Ø26,7 - 28,1	Elastic clamp Ø26.7 - 28.1	2									
46	T305020	Generador vapor completo	Complete steam generator	1	KIT GENERADOR COMPLETO	COMPLETE KIT	GENERATOR						1100003107
47	3676900	Tubo goma negra Ø17xØ10x900	Black rubber tubing Ø17xØ10	1									
48	Q901310	Abrazadera elastica Ø16,8 - 17,7	Elastic clamp Ø16.8 - 17.7	2									
49	T305026	Retorno completo	Complete return	1									
	Q232040	Arandela plana A-6	Flat washer A-6	9									
	Q262040	Arandela grower A-6	Grower washer A-6	9									
	Q162040	Tuerca exgonal M-6	Hexagonal nut M-6	9									
	Q012042	Tornillo exagonal M-6x15	Hexagonal screw M-6x15	1									
50	T305043	Junta de colector	Manifold joint	1									



N plano  
C-1631

Firma

Fecha  
2-2005

Aparato  
HORNO A GAS HGV-10/21

CIERRE CHIMENEA

Lamina  
7

Fagor Industrial S.Coop. **FAGOR**  
Onate



MOD.

HORNO A GAS

ZONA

CIERRE CHIMENEA

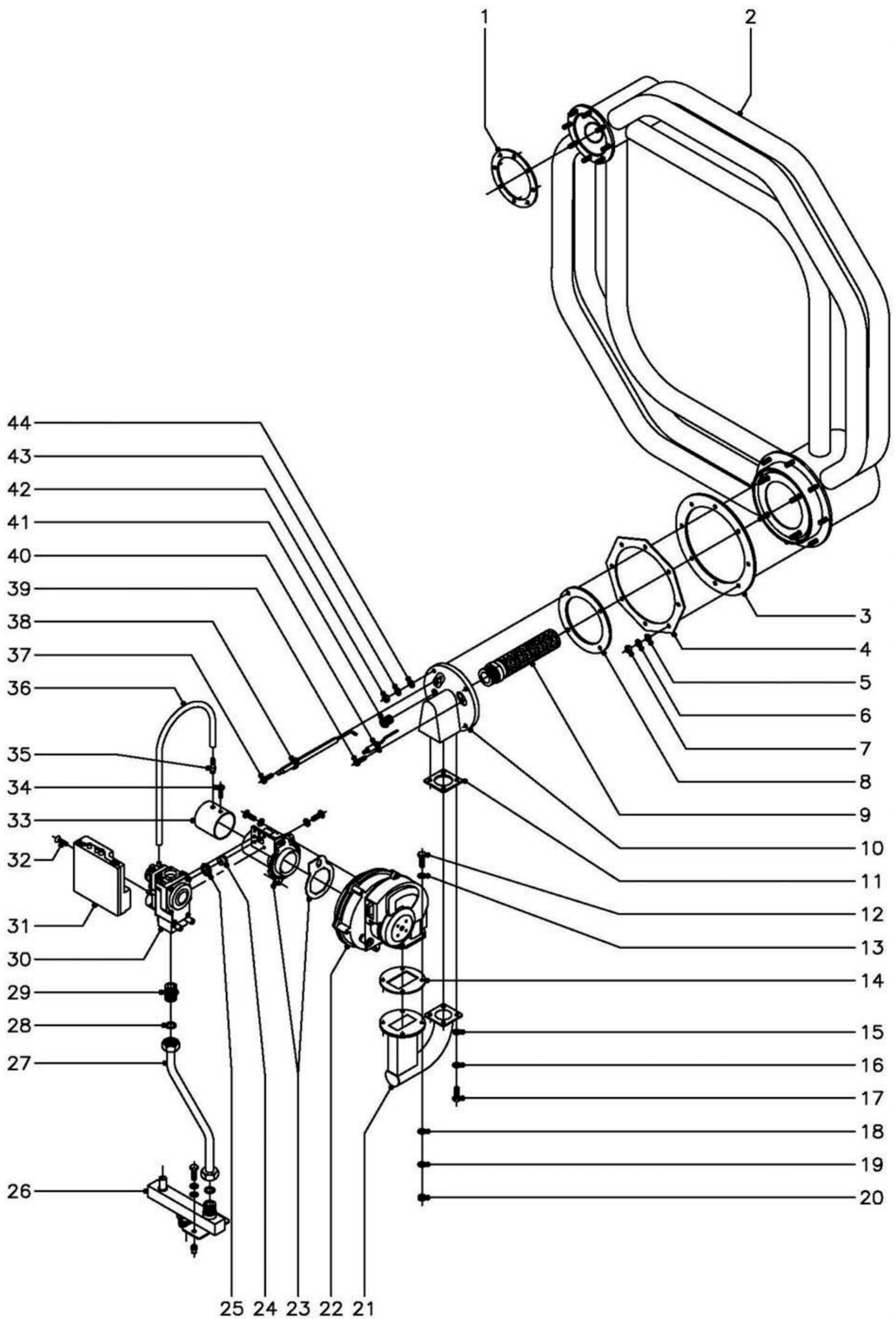
PLANO

C-1631

ITEM	CODIGO	DENOMINACION	TEXTO	HGV-10/21															NOTAS
1	Q221350	Tuerca exagonal autoblocante M-3	Selflocking hexagonal nut M	4															
2	R010534	Interruptor puerta	Door switch	2															
3	R010535	Placa separadora	Separating steel sheet	4															
4	Q032013	Tornillo alomado M-3x20	Curved screw M-3x20	4															
5	T135021	Escuadra amarre motor	Motor anchoring bracket	1															
6	Q232040	Arandela plana A-6	Flat washer A-6	4															
7	Q242040	Arandela abanico A-6	Fan shaped washer A-6	4															
8	Q162040	Tuerca exagonal M-6	Hexagonal nut M-6	4															
9	T113010	Motor chimenea	Chimney motor	1															
10	Q042031	Tornillo avellanado M-5x10	Countersunk screw M-5x10	3															
11	Q151320	Tornillo alomado M-4x6	Curved screw M-4x6	1															
12	Q162040	Tuerca exagonal M-6	Hexagonal nut M-6	1															
13	Q032021	Tornillo alomado M-4x10	Curved screw M-4x10	1															
14	T135012	Leva	Cam	1															
15	Q308013	Arandela de teflon Ø14xØ8x2	Teflon washer Ø14xØ8x2	2															
16	T135009	Eje de leva	Cam shaft	1															
17	T135047	Palanca de elevacion	Lifting lever	1															
18	T135045	Suplemento eje retencion	Retaining shaft supplement	1															
19	T135046	Eje guia retencion	Retaining guide shaft	1															
20	Q271033	Arandela de seguridad Ø6	Safety washer Ø6	2															
21	T135044	Eje retencion vapores	Vapour retaining shaft	1															
22	Q307067	Junta torica Ø14,43xØ9,19xØ2,62	O ring Ø14.43xØ9.19xØ2.62	1															
23	R725030	Tuerca guia retencion	Retaining guide nut	1															
24	T135022	Soporte amarre motor completo	Complete motor anchoring h	1															
25	T302630	Chimenea completa	Complete chimney	1															
26	T125027	Retencion vapores	Vapour retention	1															
27	Q302022	Arandela plana Ø16xØ6x1,2	Flat washer Ø16xØ6x1.2	1															
28	R725008	Resorte	Spring	1															
29	Q302022	Arandela plana Ø16xØ6x1,2	Flat washer Ø16xØ6x1.2	1															

**MOD.****HORNO A GAS****ZONA****CIERRE CHIMENEA****PLANO****C-1631**

<b>ITEM</b>	<b>CODIGO</b>	<b>DENOMINACION</b>	<b>TEXTO</b>	<b>HGV-10/21</b>									<b>NOTAS</b>
30	Q162040	Tuerca exagonal M-6	Hexagonal nut M-6	2									
31	Q162040	Tuerca exagonal M-6	Hexagonal nut M-6	2									
32	Q302022	Arandela plana Ø16xØ6x1,2	Flat washer Ø16xØ6x1.2	2									
33	Q012042	Tornillo exagonal M-6x15	Hexagonal screw M-6x15	2									
34	T122630	Junta chimenea	Chimney joint	1									
35	T302655	Pletina corta refuerzo inferior	Lower reinforcement short p	2									
36	Q232030	Arandela plana A-5	Flat washer A-5	8									
37	Q242030	Arandela abanico A-5	Fan shaped washer A-5	8									
38	Q213131	Tuerca sombrerete M-5	Cowl nut M-5	8									
39	T122631	Pletina larga refuerzo inferior	Lower reinforcement long p	2									



N plano C-1632	Firma 	Fecha 2-2005	Aparato HORNO A GAS HGV-10/21	PARTE FUNCIONAL GAS	Lamina 8	Fagor Industrial S.Coop. <b>FAGOR</b> Dfate
-------------------	-----------	-----------------	----------------------------------	---------------------	-------------	--

ITEM	CODIGO	DENOMINACION	TEXTO	HGV-10/21									NOTAS
1	T305043	Junta de colector	Manifold joint	1									
2	T305700	Intercambiador completo	Complete heat exchanger	1									
3	R725051	Junta camara combustion	Combustion chamber joint	1									
4	-	Brida amarre camara combustion	Combustion chamber ancho	1									Caldeado a cuerpo de horno
5	Q232040	Arandela plana A-6	Flat washer A-6	8									
6	Q262040	Arandela grower A-6	Grower washer A-6	8									
7	Q163040	Tuerca exagonal M-6	Hexagonal nut M-6	8									
8	R725055	Junta de tapa principal	Main cover joint	1									
9	T115710	Quemador Furigas	Furigas burner	1									
10	T115782	Tapa principal	Main cover	1									
11	T305041	Junta tapa principal-conducto	Main cover-conduct joint	1									
12	Q012043	Tornillo exagonal M-6x20	Hexagonal screw M-6x20	4									Amarre ventilador-conduccion
13	Q232040	Arandela plana A-6	Flat washer A-6	4									Amarre ventilador-conduccion
14	T305042	Junta ventilador	Fan joint	1									
15	Q232030	Arandela plana A-5	Flat washer A-5	4									Amarre conduccion a tapa principal
16	Q242030	Arandela abanico A-5	Fan shaped washer A-5	4									Amarre conduccion a tapa principal
17	Q012032	Tornillo exagonal M-5x15	Hexagonal screw M-5x15	4									Amarre conduccion a tapa principal
18	Q232040	Arandela plana A-6	Flat washer A-6	4									Amarre ventilador-conduccion
19	Q242030	Arandela abanico A-6	Fan shaped washer A-6	4									Amarre ventilador-conduccion
20	Q163040	Tuerca exagonal M-6	Hexagonal nut M-6	4									Amarre ventilador-conduccion
21	T305035	Conducto tapa principal	Main cover conduct	1									
22	T303016	Ventilador RG-130	Fan RG-130	1									
23	T303040	Venturi	Venturi	1									
	-	Junta venturi-ventilador	Venturi-fan joint	1									Viene con venturi
	Q242030	Arandela abanico A-5	Fan shaped washer A-5	2									Amarre venturi a ventilador
	Q152004	Tornillo aplastado M-5x13	Flat screw M-5x13	2									Amarre venturi a ventilador
24	T305068	Tobera VK41, Ø4,8 (Buta.-Propa.)	Nozzle VK41, Ø4.8 (Buta.-F	1									
24	T305069	Tobera VK41, Ø6 (Gas Natural)	Nozzle VK41, Ø6 (Natura	1									
25	T303046	Junta venturi 24x15,5	Venturi joint 24x150.5	1									

MOD.

HORNO A GAS

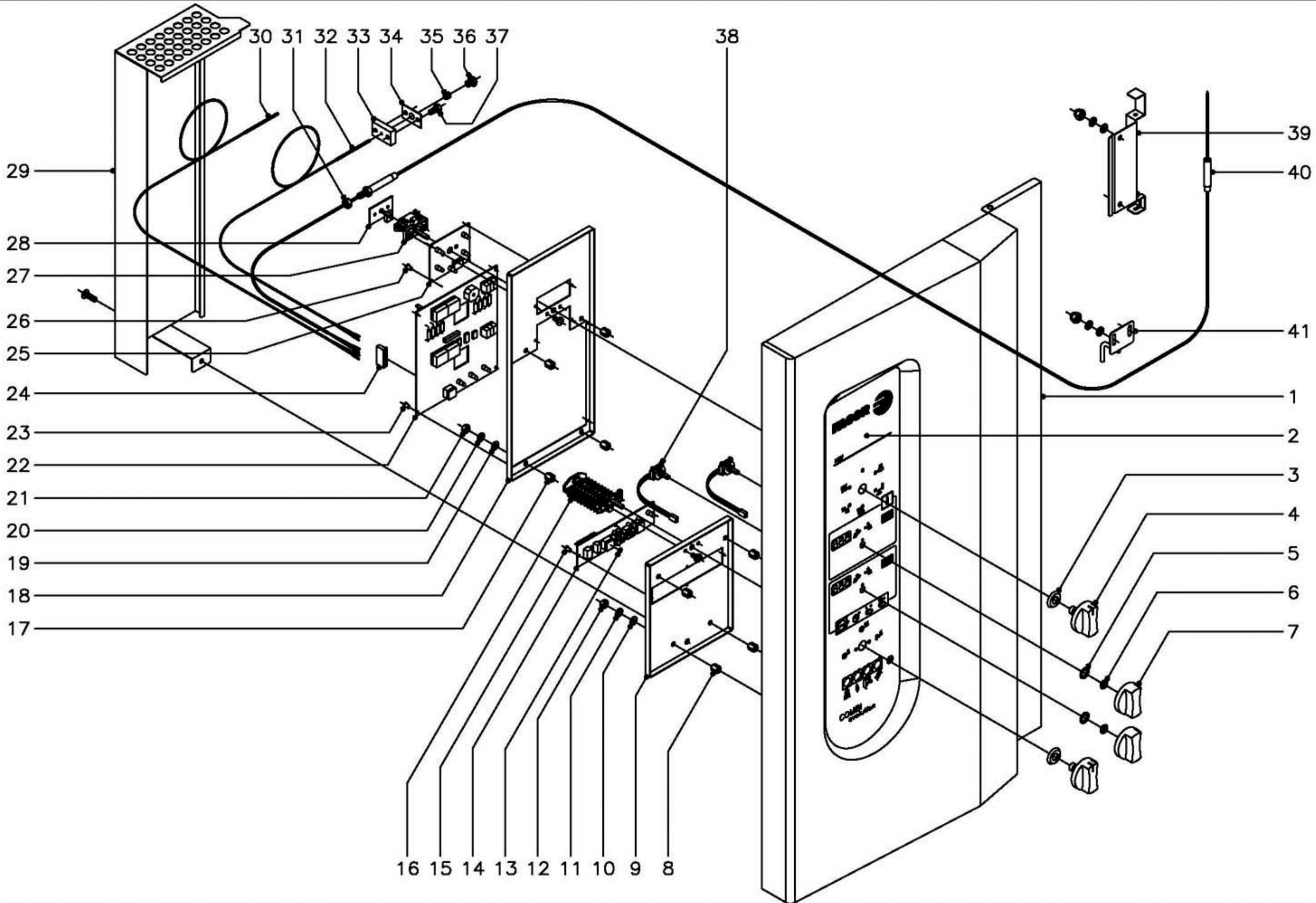
ZONA

PARTE FUNCIONAL GAS

PLANO

C-1632

ITEM	CODIGO	DENOMINACION	TEXTO	HGV-10/21									NOTAS
26	T305044	Entrada de gas completa	Complete gas inlet	1									
	Q012032	Tornillo exagonal M-5x15	Hexagonal screw M-5x15	2									
	Q242030	Arandela abanico A-5	Fan shaped washer A-5	2									
	Q232030	Arandela plana A-5	Flat washer A-5	2									
	Q221342	Remache exagonal M-5	Hexagonal rivet M-5	2									
27	T305015	Conduccion gas camara completa	Complete chamber gas con	1									
28	Q306012	Arandela junta Ø18xØ13x1,5	Joint washer Ø18xØ13x1.5	2									
29	S205023	Manguito doble 1/2"	Double sleeve 1/2"	1									
30	T303017	Valvula VK-4115 V-1121	Valve VK-4115 V-1121	1									
	Q242030	Arandela abanico A-5	Fan shaped washer A-5	3									Amarre venturi a valvula
	Q152004	Tornillo aplastado M-5x13	Flat screw M-5x13	3									Amarre venturi a valvula
31	T303013	Control de encendido	Ignition control	1									
32	Q032011	Tornillo alomado M-3x10	Curved screw M-3x10	1									
33	T305712	Tubo ventilador completo	Complete ventilating tubing	1									
34	Q032021	Tornillo alomado M-4x10	Curved screw M-4x10	1									
35	R725077	Boquilla conexión	Connection nozzle	1									
36	3702400	Tubo goma negra Ø8xØ4x200	Black rubber tubing Ø8xØ4x	1									
37	Q153021	Tornillo alomado M-4x10	Curved screw M-4x10	2									
38	T115781	Electrodo de ignicion	Ignition electrode	1									
39	Q153021	Tornillo alomado M-4x10	Curved screw M-4x10	1									
40	T115712	Electrodo de deteccion	Detection electrode	1									
41	R725015	Visor de encendido	Ignition sight	1									
42	Q163040	Tuerca exagonal M-6	Hexagonal nut M-6	4									Amarre tapa-camara combustion
43	Q242030	Arandela abanico A-6	Fan shaped washer A-6	4									Amarre tapa-camara combustion
44	Q232040	Arandela plana A-6	Flat washer A-6	4									Amarre tapa-camara combustion



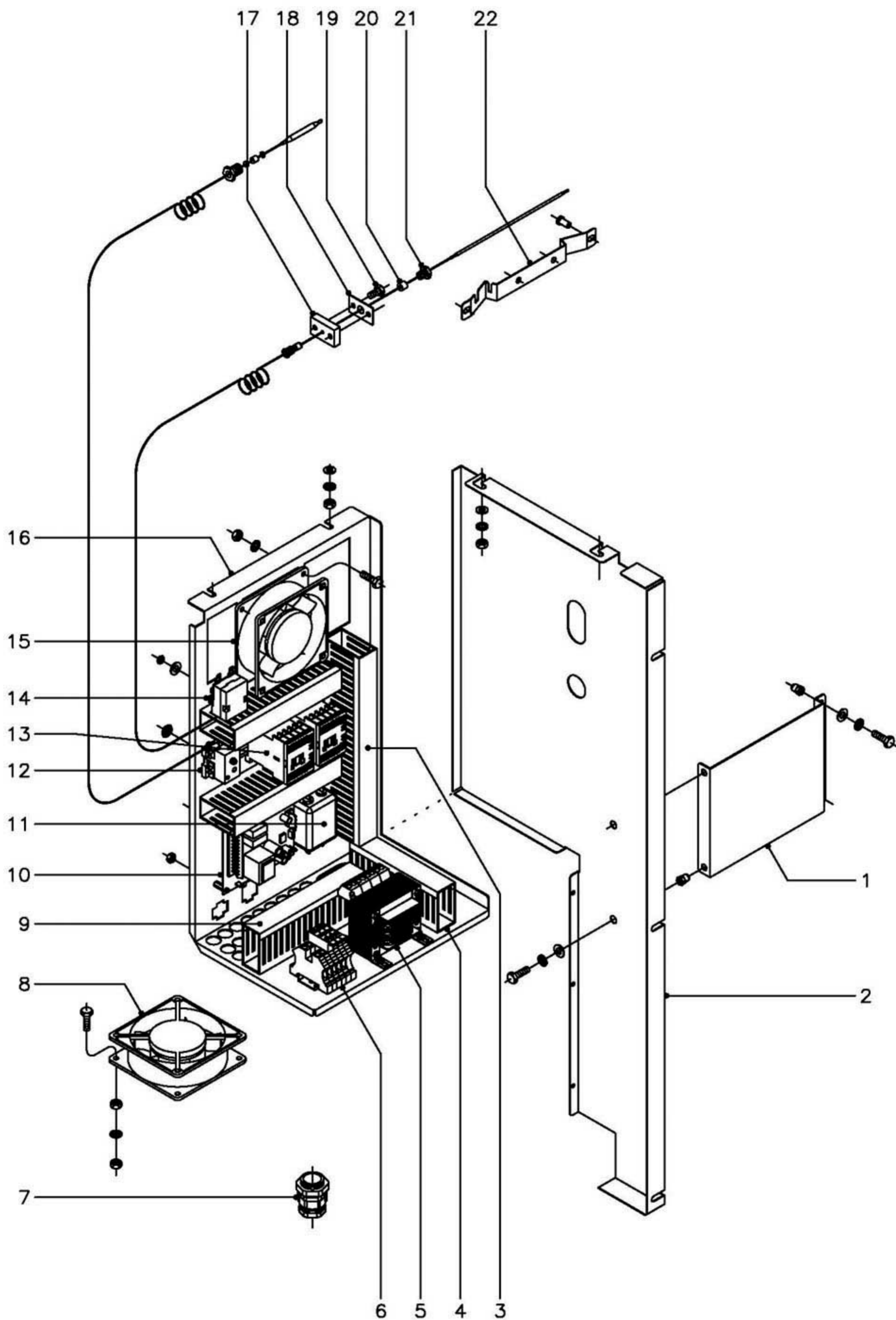
N plano C-1633	Firma 	Fecha 2-2005	Aparato PARTE ELECTRICA PORTAMANDOS HORNO A GAS HGV-10/21	Lamina 9	Fagor Industrial S.Coop. <b>FAGOR</b> Orata
-------------------	-----------	-----------------	---	-------------	--

MOD.	<b>HORNO A GAS</b>	ZONA	<b>PARTE ELECTRICA PORTAMANDOS</b>	PLANO	<b>C-1633</b>
------	--------------------	------	------------------------------------	-------	---------------

ITEM	CODIGO	DENOMINACION	TEXTO	HGV-10/21														NOTAS
1	T302808	Panel portamandos	Control panel	1														
2	T303000	Serigrafia HGV-10 / 21	Serigraphy HGV-10 / 21	1														
3	R663046	Junta conmutador	Switch joint	2														
4	T303010	Boton de mando completo	Complete control button	2														
5	-	Arandela (viene con tuerca M-10)	Washer (comes with M-10 r	2														
6	Z953041	Tuerca exagonal M-10	Hexagonal nut M-10	2														
7	T303011	Boton de mando completo	Complete control button	2														
8	T302829	Distanciador componentes	Components spacer	4														
9	T303021	Soporte circuitos	Circuit holder	1														
10	Q232030	Arandela plana A-5	Flat washer A-5	4														
11	Q242030	Arandela abanico A-5	Fan shaped washer A-5	4														
12	Q163030	Tuerca exagonal M-5	Hexagonal nut M-5	4														
13	R663056	Bapipons autoadesivo	Self adhesive bubipons	4														
14	T303019	Circuito teclado	Key board circuit	1														
15	R663036	Fijacion circuito	Circuit bindings	4														
16	R663026	Conmutador de funciones	Function switch	1														
	Q151320	Tornillo alomado M-4x6	Curved screw M-4x6	2														
17	T302829	Distanciador componentes	Components spacer	4														
18	T302826	Soporte componentes	Components holder	1														
19	Q232030	Arandela plana A-5	Flat washer A-5	4														
20	Q242030	Arandela abanico A-5	Fan shaped washer A-5	4														
21	Q163030	Tuerca exagonal M-5	Hexagonal nut M-5	4														
22	T303005	Controlador	Controller	1														
23	R663036	Fijacion circuito	Circuit bindings	4														
24	T303045	Conector paso 3,96mm. 8 vias	Lead connector 3.96 mm 8	1														
25	T303018	Circuito de leds visualizador	Display leds circuit	1														
26	R663036	Fijacion circuito	Circuit bindings	4														
27	T303004	Conmutador acople potenciómetro	Potentiometer coupling swit	1														
	Q151320	Tornillo alomado M-4x6	Curved screw M-4x6	2														

MOD.													HORNO A GAS			ZONA			PARTE ELECTRICA PORTAMANDOS				PLANO		C-1633	
ITEM	CODIGO	DENOMINACION	TEXTO	HGV-10/21														NOTAS								
28	T303020	Circuito potenciometro	Potentiometer circuit	1																						
29	T303039	Proteccion circuitos	Circuit protection	1																						
	Q152004	Tornillo aplastado M-5x13	Flat screw M-5x13	1																						
30	T323024	Conjunto termopar vapor L=1600	Vapour thermocouple set G	1														Generador vapor								
31	Q162050	Tuerca exagonal M-8x1	Hexagonal nut M-8x1	1																						
32	T323011	Conjunto termopar camara L=700	Chamber thermocouple set	1														Horno								
33	T112625	Base cierre sonda (pasamuros)	Probe closing base (wire pr	1																						
34	R692812	Junta pasamuros	Wire protection joint	1																						
35	R662652	Bicono cierre sonda	Probe closing bicone	1																						
36	R662629	Racord cierre sonda	Probe closing adaptor	1																						
37	Q012021	Tornillo exagonal M-4x10	Hexagonal screw M-4x10	2																						
38	T303022	Selector encoder	Encoder selector	2																						
39	T302644	Soporte sonda	Probe holder	1																						
	Q232030	Arandela plana A-5	Flat washer A-5	2																						
	Q242030	Arandela abanico A-5	Fan shaped washer A-5	2																						
	Q212031	Tuerca sombrerete M-5	Cowl nut M-5	2																						
40	T303007	Conjunto sonda nucleo	Core probe set	1																						
41	T302646	Tensor pincho completo	Complete spike tensor	1																						
	Q232030	Arandela plana A-5	Flat washer A-5	2																						
	Q242030	Arandela abanico A-5	Fan shaped washer A-5	2																						
	Q212031	Tuerca sombrerete M-5	Cowl nut M-5	2																						





N plano  
C-1634

Firma

Fecha  
2-2005

Aparato  
CUADRO ELECTRICO  
HORNO A GAS HGV-10/21

Lamina  
10

Fagor Industrial S.Coop. **FAGOR**  
Onate

MOD.

HORNO A GAS

ZONA

CUADRO ELECTRICO

PLANO

C-1634

ITEM	CODIGO	DENOMINACION	TEXTO	HGV-10/21										NOTAS
1	T303051	Soporte cierre cuadro electrico	Switchboard closing holder	1										
	Q012032	Tornillo exagonal M-5x15	Hexagonal screw M-5x15	2										
	Q242030	Arandela abanico A-5	Fan shaped washer A-5	2										
	Q302022	Arandela plana Ø16xØ6x1,2	Flat washer Ø16xØ6x1.2	2										
	Q221342	Remache exagonal M-5	Hexagonal rivet M-5	2										
2	T303002	Cierre cuadro electrico	Switchboard closing	1										
	Q012032	Tornillo exagonal M-5x15	Hexagonal screw M-5x15	2										Amarre cierre a soporte
	Q242030	Arandela abanico A-5	Fan shaped washer A-5	2										Amarre cierre a soporte
	Q302022	Arandela plana Ø16xØ6x1,2	Flat washer Ø16xØ6x1.2	2										Amarre cierre a soporte
	Q221342	Remache exagonal M-5	Hexagonal rivet M-5	2										Amarre cierre a soporte
	Q302022	Arandela plana Ø16xØ6x1,2	Flat washer Ø16xØ6x1.2	2										Amarre cierre a techo
	Q242030	Arandela abanico A-6	Fan shaped washer A-6	2										Amarre cierre a techo
	Q163040	Tuerca exagonal M-6	Hexagonal nut M-6	2										Amarre cierre a techo
3	3715520	Canaleta unex 30x60x270	Unex feed through 30x60x270	1										
4	3715520	Canaleta unex 30x60x150	Unex feed through 30x60x150	1										
	Q412002	Remache tubular Ø4x7,5	Tubular rivet Ø4x7.5	2										
5	R503005	Transformador	Transformer	1										
	Q032021	Tornillo alomado M-4x10	Curved screw M-4x10	4										
	Q242020	Arandela abanico A-4	Fan shaped washer A-4	4										
	Q162020	Tuerca exagonal M-4	Hexagonal nut M-4	4										
6	Z263303	Tope final 10	End buffer 10	1										
	R073005	Borna portafusible	Fuse carrier connection	3										
	P184011	Cartucho portafusible 4A.	Fuse holder cartridge 4A.	3										
	Z263302	Borne paso 10 azul	Blue connector lead 10 blue	1										
	P453026	Borne tierra 10 amarillo-verde	Earth connector 10 yellow-g	1										
	Z123018	Guia contactor L=55	Contacto guide G=55	1										
	Q412002	Remache tubular Ø4x7,5	Tubular rivet Ø4x7.5	2										
7	R073004	prensaestopas	Stuffing box	1										
8	Z103066	Ventilador 230V., 50/60 Hz.	Fan 230 V, 50/60 Hz	1										

MOD.

HORNO A GAS

ZONA

CUADRO ELECTRICO

PLANO

C-1634

ITEM	CODIGO	DENOMINACION	TEXTO	HGV-10/21																NOTAS
	Q013023	Tornillo exagonal M-4x20	Hexagonal screw M-4x20	4																
	Q242020	Arandela abanico A-4	Fan shaped washer A-4	4																
	Q162020	Tuerca exagonal M-4	Hexagonal nut M-4	8																
9	3715520	Canaleta unex 30x60x180	Unex feed through 30x60x180	3																
10	T303048	Variador hornos gas 4V	4V gas ovens variator	1																
	T133007	Distanciador M-3	Spacer M-3	4																
	T133008	Tornillo amarre M-3x22	Anchoring screw M-3x22	4																
	Q161310	Tuerca exagonal M-3	Hexagonal nut M-3	4																
11	T113023	Filtro de entrada	Inlet filter	1																
12	Z953035	Termostato limitador aviso	Warning limiter thermostat	1																
	Z953041	Tuerca exagonal M-10x1	Hexagonal nut M-10x1	1																
13	Z743009	Contactador sirius 3RT10, 16-2APO2	Sirius 3RT10, 16-2APO2 contactor	2																
	Z103084	Guia contactor L=138	Contactador guide G=138	1																
	Q412002	Remache tubular Ø4x7,5	Tubular rivet Ø4x7.5	2																
14	T303009	Termostato limitador	Limiter thermostat	1																
	Q232050	Arandela plana A-8	Flat washer A-8	1																
	Q162050	Tuerca exagonal M-8	Hexagonal nut M-8	1																
15	Z103066	Ventilador 230V., 50/60 Hz.	Fan 230 V, 50/60 Hz	1																
	Q012021	Tornillo exagonal M-4x10	Hexagonal screw M-4x10	4																
	Q242020	Arandela abanico A-4	Fan shaped washer A-4	4																
	Q162020	Tuerca exagonal M-4	Hexagonal nut M-4	4																
16	T303001	Panel cuadro electrico	Switchboard panel	1																
	Q302022	Arandela plana Ø16xØ6x1,2	Flat washer Ø16xØ6x1.2	2																
	Q242030	Arandela abanico A-6	Fan shaped washer A-6	2																
	Q163040	Tuerca exagonal M-6	Hexagonal nut M-6	2																
17	T112625	Base cierre sonda (pasamuros)	Probe closing base (wire protection)	1																
18	R692812	Junta pasamuros	Wire protection joint	1																
19	Q012021	Tornillo exagonal M-4x10	Hexagonal screw M-4x10	2																
20	R662662	Junta cierre bulbo limitador	Limiting bulb closing joint	1																

ITEM	CODIGO	DENOMINACION	TEXTO	HGV-10/21														NOTAS
21	R662629	Racord cierre sonda	Probe closing adaptor	1														
22	R662683	Soporte bulbo limitador	Limiting bulb holder	1														
	Q412002	Remache tubular Ø4x7,5	Tubular rivet Ø4x7.5	3														

MOD.

HORNO A GAS

ZONA

VARIOS

PLANO

ITEM

CODIGO

DENOMINACION

TEXTO

HGV-10/21

NOTAS

T306500

Manual de instrucciones

Instructions manual

1

Español

T306501

Manual de instrucciones

Instructions manual

1

Aleman

T306502

Manual de instrucciones

Instructions manual

1

Frances

T306503

Manual de instrucciones

Instructions manual

1

Ingles

T306504

Manual de instrucciones

Instructions manual

1

Italiano

T303038

Esquema electrico adhesivo

Adhesive electrical diagram

1

Plano HC-76902

T303042

Leyenda esquema electrico

Electrical diagram legend

1

Plano HC-76970

T303044

Plano electrico de montaje

Assembly electrical diagram

1

Plano HD-12884

T303053

Union contactores de inversion

Inversion contactors joint

1

T303033

Cableado variador - soplante

Variator wiring - blower

1

T303031

Cableado luz interior

Inner light wiring

1

T303028

Cableado control circuito de leds

Leds circuit control wiring

1

T303032

Instalacion electrica HGV-10/21

Electrical insallation HGV-10/21

1

T303034

Cable encendido camara

Chamber ignition cable

1

T303035

Cable detector de llama en camara

Chamber flame detector cable

1

T303036

Cable encendido caldera

Boiler ignition cable

1

T303037

Cable detector de llama en caldera

Chamber flame detector cable

1

T303030

Cableado potenciometro

Potentiometer wiring

1



MOD.	<b>HORNO A GAS</b>	ZONA	<b>CAMBIOS A REALIZAR PARA PASAR DE (380-415 V.) a (220 V.)</b>	PLANO	<b>C-1628</b>
------	--------------------	------	---	-------	---------------

ITEM	CODIGO	DENOMINACION	TEXTO	HGV-10/21											NOTAS
		<b>PIEZAS A ELIMINAR</b>	<b>PARTS TO BE REMOVED</b>												
21	T323022	Motor de turbina 400 V.	Turbine motor 400 V	1											
	T326502	Etiqueta 380 - 415 V. 50 Hz.	Label 380 - 415 V 50 Hz	1											
		<b>PIEZAS A INTRODUCIR</b>	<b>PARTS TO BE INCLUDED</b>												
21	T323023	Motor de turbina 230 V.	Turbine motor 230 V	1											
	T326503	Etiqueta 220 V. 50 Hz.	Label 220 V 50 Hz	1											





MOD.

HORNO A GAS

ZONA

CAMBIOS A REALIZAR PARA LA VERSION VAUBAN

PLANO

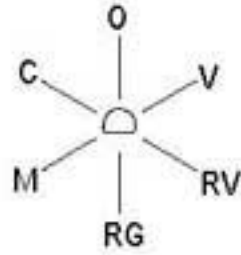
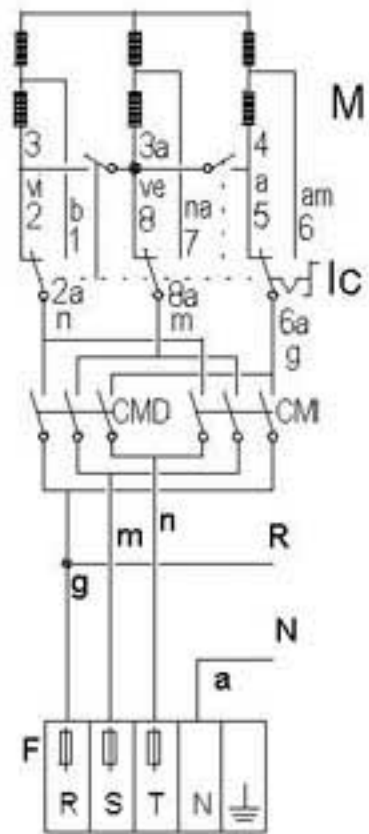
C-1625

ITEM	CODIGO	DENOMINACION	TEXTO	HGV-10/21	VGT-10/21													NOTAS
		<b><u>PIEZAS A ELIMINAR</u></b>	<b><u>PARTS TO BE REMOVED</u></b>															
32	T303000	Serigrafia HGV-10 / 21	Serigraphy HGV-10 / 21	1	-													
	T306500	Manual de instrucciones	Instructions manual	1	-													Español
	T306501	Manual de instrucciones	Instructions manual	1	-													Aleman
	T306502	Manual de instrucciones	Instructions manual	1	-													Frances
	T306503	Manual de instrucciones	Instructions manual	1	-													Ingles
	T306504	Manual de instrucciones	Instructions manual	1	-													Italiano
		<b><u>PIEZAS A INTRODUCIR</u></b>	<b><u>PARTS TO BE INCLUDED</u></b>															
32	T303054	Serigrafia VAUBAN	VAUBAN serigraphy	-	1													
	T306510	Manual de instrucciones VAUBAN	VAUBAN instructions manu	-	1													

# HGV 10/21

# HGP 10/21

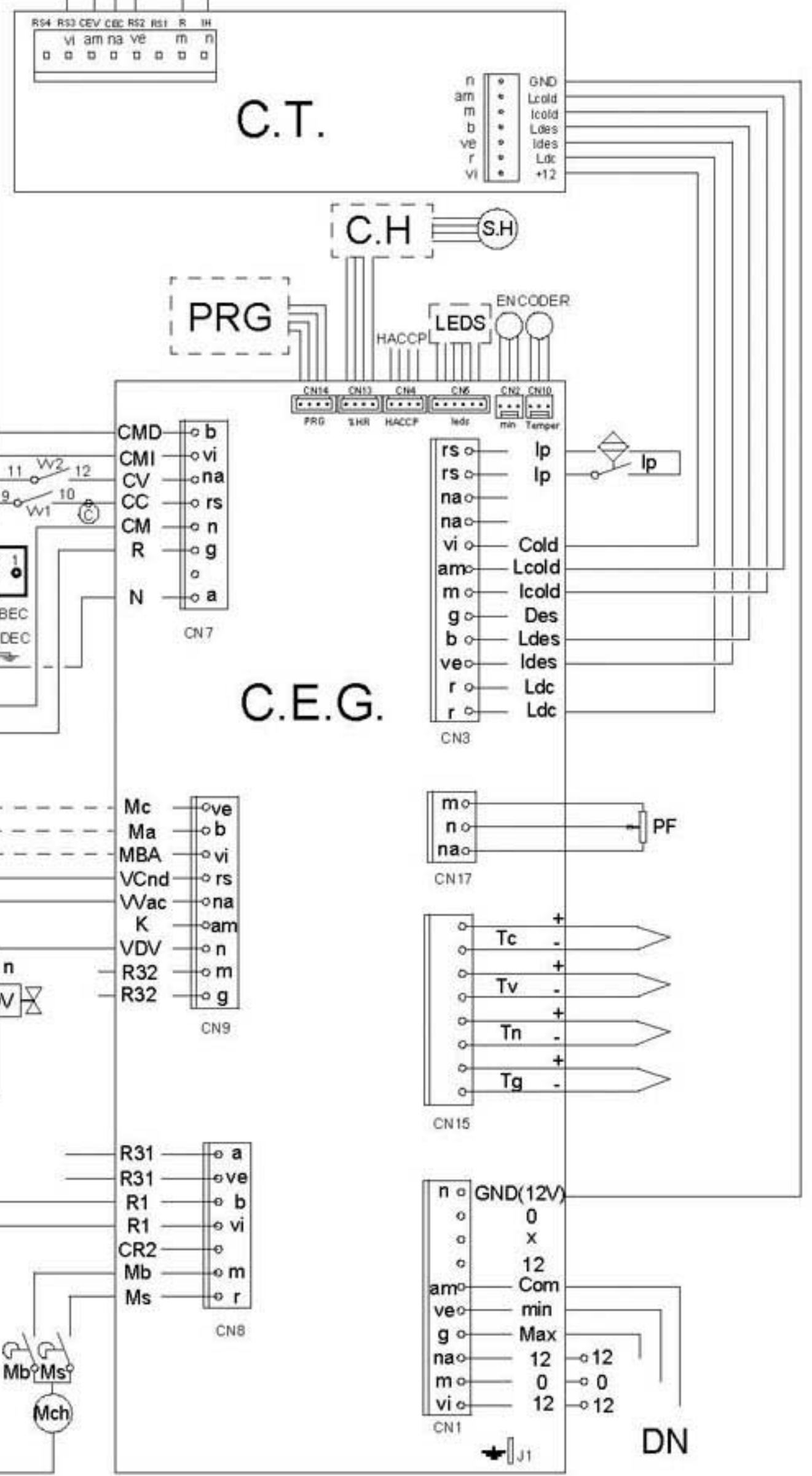
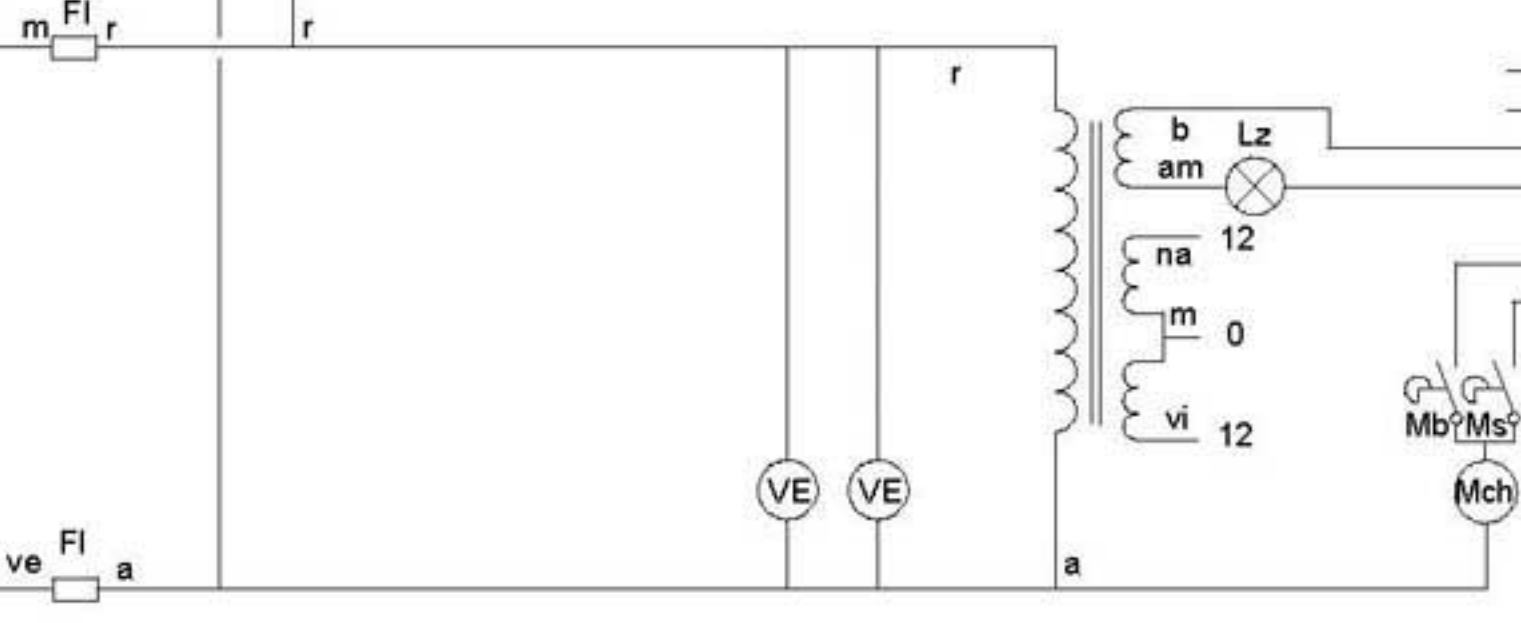
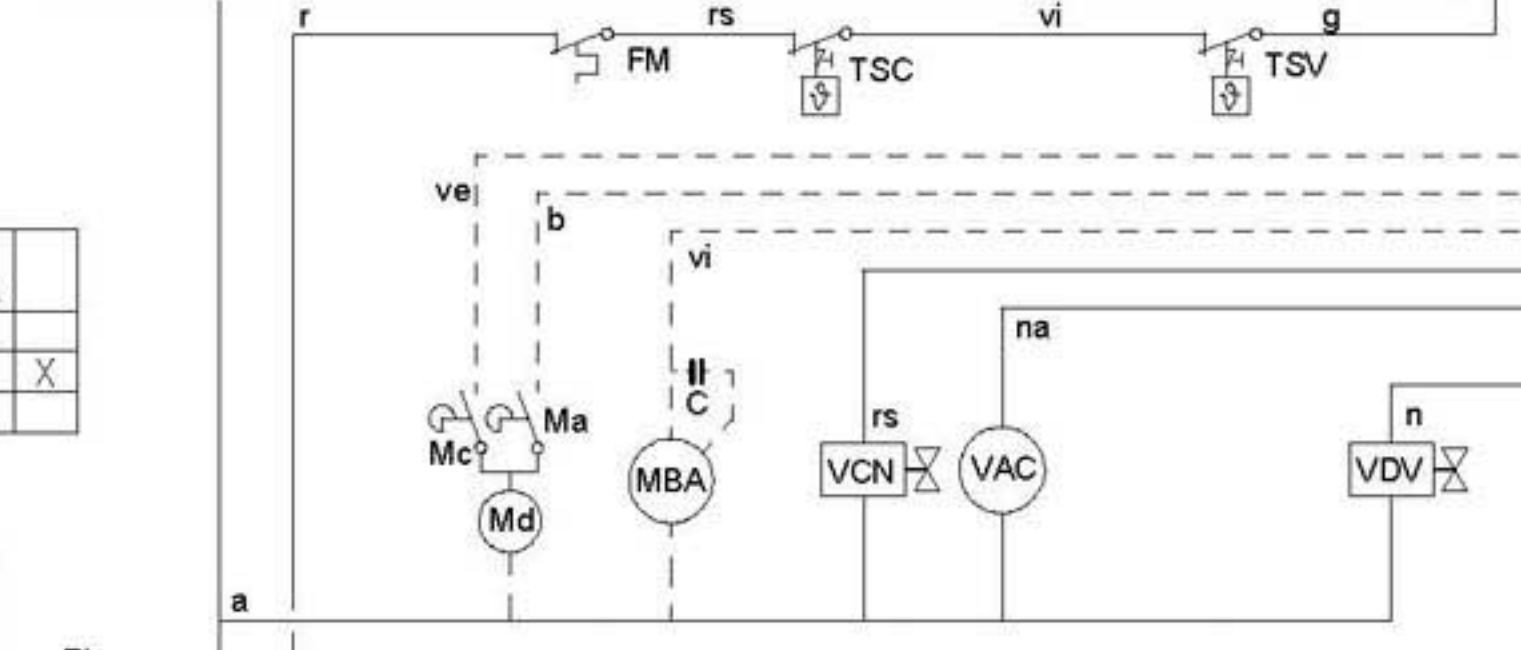
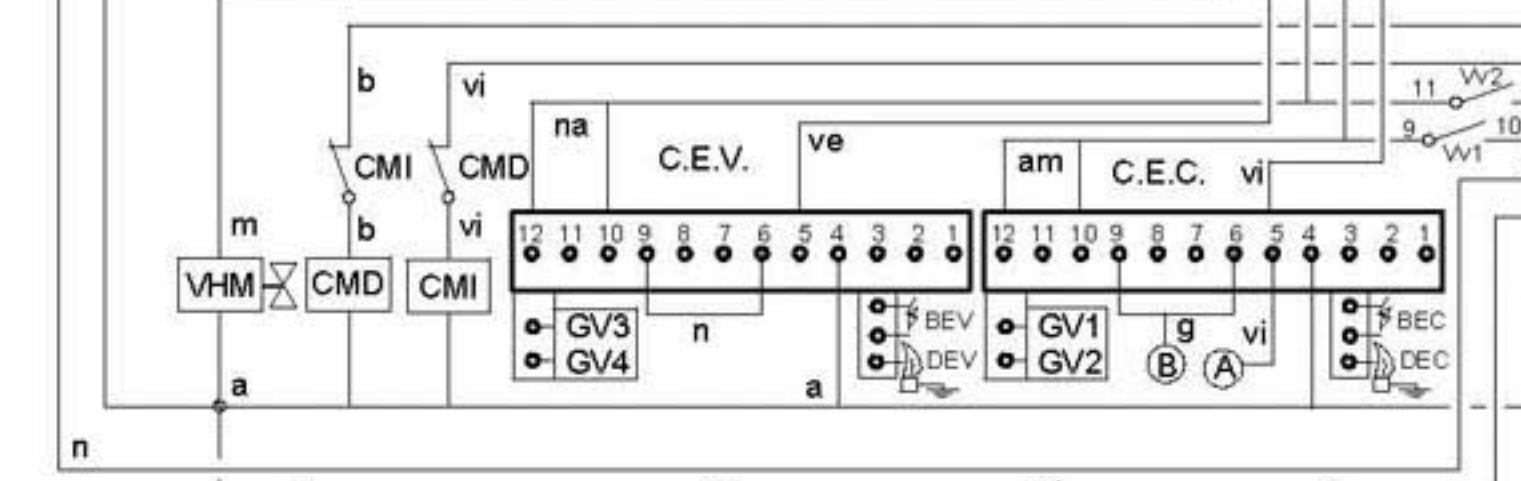
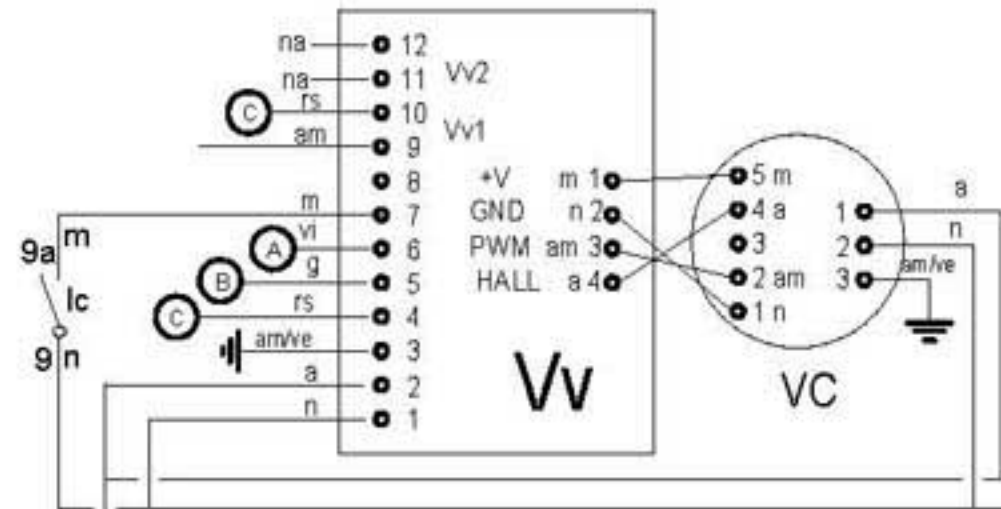
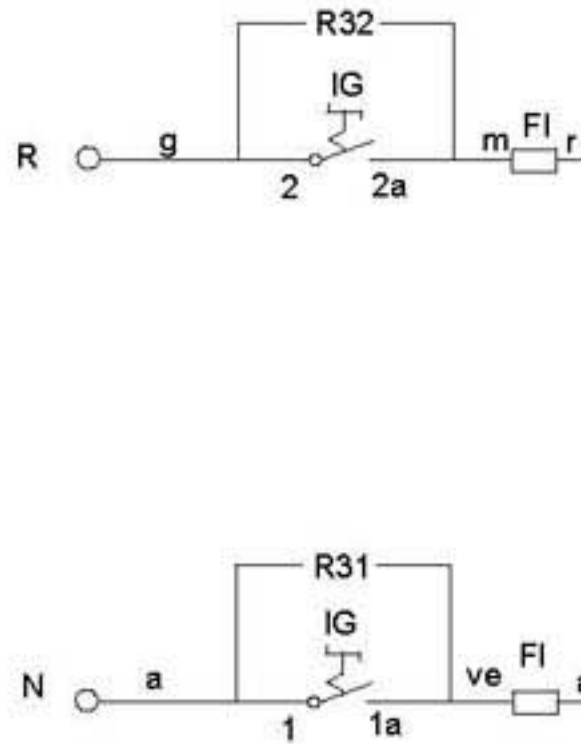
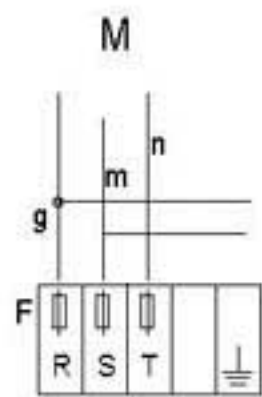
3 ~ 400V



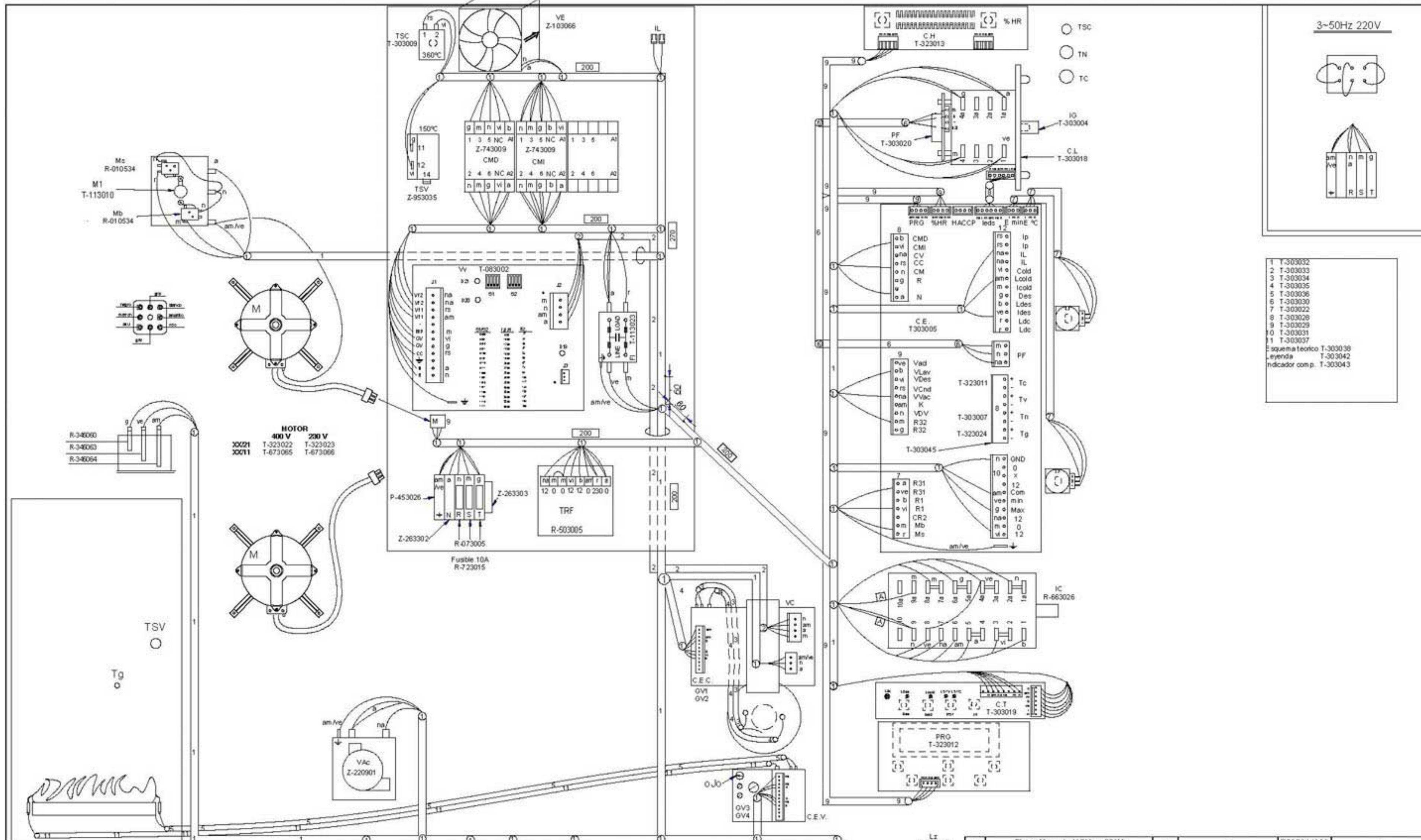
Modo	IG	1 1a	2 2a
OFF			
VAPOR	X	X	
REG. VAPOR	X	X	
REGENERAC.	X	X	
MIXTO	X	X	
CONVECCION	X	X	

IC	1		2		3		4		5		6		7		8		9	
	1a	2a	3a	4a	5a	6a	7a	8a	9a									
SS	X		X	X	X	X	X	X	X	X								
SS	X		X	X	X	X	X	X	X									
SS		X				X			X				X					

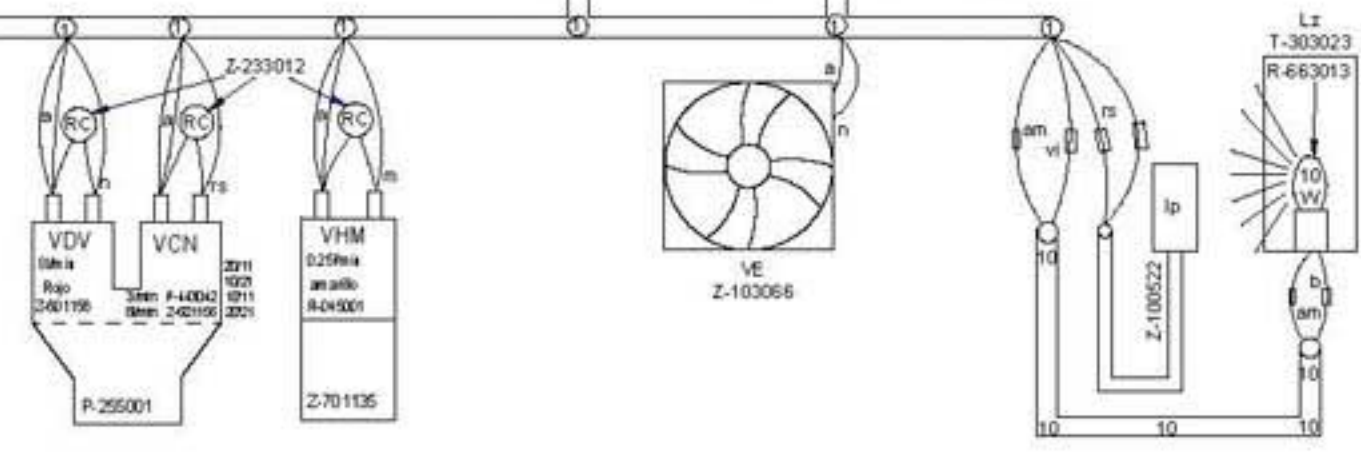
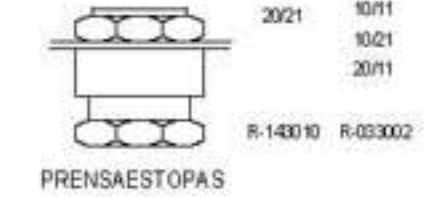
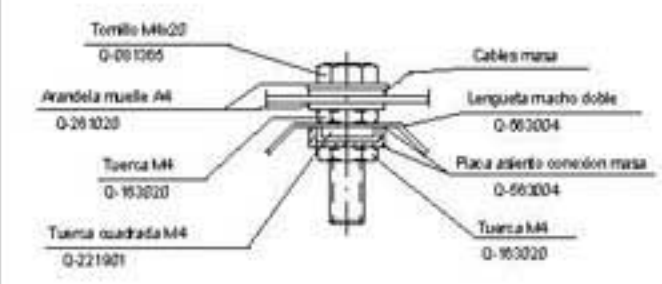
3 ~ 220V



	ESPAÑOL	FRANÇAIS	ENGLISH	DEUTSCH	ITALIANO
BEC =	Bujía Encendido Cámara	Bougie Allumage Chambre	Chamber Spark Plug	Zündkerze Einschalten Garraum	Candela di Accensione Camera
BEV =	Bujía Encendido Caldera	Bougie Allumage Chaudière	Boiler Spark Plug	Zündkerze Einschalten Boile	Candela di Accensione Caldaia
C.E.C =	Control Combustión Cámara	Contrôle Combustion Chambre	Chamber Combustion Control	Steuerung Verbrennung Garraum	Controllo Combustione Camera
C.E.G =	Control Electrónico General	Contrôle Électronique Général	Main Electronic Control	Steuerung Elektronik allgemein	Controllo Elettronico Generale
C.E.V =	Control Combustión Caldera	Contrôle Combustion Chaudière	Boiler Combustion Control	Steuerung Verbrennung Boiler	Controllo Combustione Caldaia
C.H =	Circuito Humedad	Circuit Humidité	Humidity Circuit	Kreislauf Feuchtigkeit	Circuito Umidità
C.L =	Circuito Leds	Circuit LEDs	Led Circuit	Kreislauf LEDs	Circuito Leds
C.T =	Circuito Teclado	Circuit Clavier	Keypad Circuit	Kreislauf Tastatur	Cicuito Tastiera
CC1, CC2 =	Contactador Resistencia Cámara	Contacteur Élément Chauffant Chambre	Chamber Heating Element Contactor	Schutz Heizwiderstand Garraum	Contattore Resistenza Camera
CMD =	Contactador Motor Derecha	Contacteur Moteur Droite	Right Engine Contactor	Schutz Motor rechts	Contattore Motore Destra
CM =	Contactador Motor Izquierda	Contacteur Moteur Gauche	Left Engine Contactor	Schutz Motor links	Contattore Motore Sinistra
CR2 =	Rele Arranque	Relais Démarrage	Starting Relay	Relais Anlauf	Relè Accensione
CV1, CV2 =	Contactador Resistencias Caldera	Contacteur Élément Chauffant Chaudière	Boiler Heating Element Contactor	Schutz Heizwiderstand Boiler	Contattore Resistenza Caldaia
DEC =	Detector Llama Cámara	Détecteur Flamme Chambre	Chamber Flame Detector	Flammendetektor Garraum	Rilevatore di Fiamma Camera
DEV =	Detector Llama Caldera	Détecteur Flamme Chaudière	Boiler Flame Detector	Flammendetektor Boiler	Rilevatore di Fiamma Caldaia
DN =	Detector Nivel Caldera	Détecteur Niveau Chaudière	Boiler Level Detector	Pegeldetektor Boiler	Rilevatore Livello Caldaia
EM =	Encoder Selector Tiempo	Encodeur Sélecteur Temps	Time Selector Encoder	Encoder Zeitwahlschalter	Encoder Selettore Tempo
E°C =	Encoder Selector Temperatura	Encodeur Sélecteur Température	Temperature Selector Encoder	Encoder Temperaturwahlschalter	Encoder Selettore Temperatura
F =	Fusibles	Fusibles	Fuses	Sicherungen	Fusibili
FI =	Filtro Interferencias	Filtre Interférences	Interference Filter	Störungsfilter	Filtro Interferenze
FM =	Térmico Motor	Thermique Moteur	Thermal Engine	Thermoschalter Motor	Termico Motore
GV1, GV2 =	Electro válvula Gas Cámara	Électrovanne Gaz Chambre	Chamber Gas Solenoid Valve	Elektroventil Gas Garraum	Elettrovalvola Gas Camera
GV3, GV4 =	Electro válvula Gas Caldera	Électrovanne Gaz Chaudière	Boiler Gas Solenoid Valve	Elektroventil Gas Boiler	Elettrovalvola Gas Caldaia
IC =	Selector Velocidad Potencia	Sélecteur Vitesse Puissance	Power Speed Selector	Wahlschalter Geschwindigkeit Leistung	Selettore Velocità Potenza
IG =	Interruptor General	Interrupteur Général	Main Switch	Hauptschalter	Interruttore generale
IL =	Interruptor Seguridad Lavado	Interrupteur Sécurité Lavage	Washing Safety Switch	Sicherheitsschalter Waschen	Interruttore Sicurezza Lavaggio
Ip =	Interruptor Seguridad Puerta	Interrupteur Sécurité Porte	Door Safety Switch	Sicherheitsschalter Tür	Interruttore Sicurezza Porta
K1, K2, CK1, CK2=	Rele Resistencia	Relais Élément Chauffant	Heating Element Relay	Relais Heizwiderstand	Relè Resistenza
Lz =	Luz Interior	Éclairage Intérieur	Inner Light	Innenbeleuchtung	Luce Interna
M, M1, M2 =	Motor Turbina	Moteur Turbine	Turbine Engine	Motor Turbine	Motore Turbina
Mch =	Motor Chimenea	Moteur Cheminée	Stack Engine	Motor Abluftkamin	Motore Canna
Md =	Motor Válvula	Moteur vanne	Valve Engine	Motor Ventil	Motore Valvola
MBA =	Bomba Lavado	Pompe Lavage	Washing Pump	Waschenpumpe	Pompa lavaggio
Mb =	Interruptor Micro Bajada	Micronrupteur Descente	Drop Microswitch	Mikroschalter Senken	Interruttore Micro Discesa
Ms =	Interruptor Micro Subida	Micronrupteur Montée	Rise Microswitch	Mikroschalter Heben	Interruttore Micro Salita
PF =	Potenciómetro Selector Funciones	Potentiomètre Sélecteur Fonctions	Functions Selector Potentiometer	Potentiometer Funktionswahlschalter	Potenziometro Selettore Funzioni
PRG =	Programador	Programmeur	Programmer	Programmiervorrichtung	Programmatore
RC =	Resistencias Cámara	Éléments Chauffants Chambre	Chamber Heating Element	Heizwiderstände Garraum	Resistenze Camere
RV =	Resistencias Caldera	Éléments Chauffants Chaudière	Boiler Heating Element	Heizwiderstände Boiler	Resistenze Caldaia
Tc =	Sonda Cámara	Sonde Chambre	Chamber Probe	Sonde Garraum	Sonda Camera
TCN =	Termostato Condensación	Thermostat Condensation	Condensation Thermostat	Thermostat Kondensierung	Termostato Condensazione
Tg =	Sonda Caldera	Sonde Chaudière	Boiler Probe	Sonde Boiler	Sonda Caldaia
TH =	Sonda Humedad	Sonde Humidité	Humidity Probe	Sonde Feuchtigkeit	Sonda Umidità
Tn =	Sonda Núcleo	Sonde Noyau	Core Probe	Kerntemperaturmesssonde	Sonda Nucleo
TRF =	Transformador	Transformateur	Transformer	Transformator	Trasformatore
TSC =	Termostato Seguridad Cámara	Thermostat Sécurité Chambre	Chamber Safety Thermostat	Sicherheitsthermostat Garraum	Termostato Sicurezza Camera
TSV =	Termostato Seguridad Caldera	Thermostat Sécurité Chaudière	Boiler Safety Thermostat	Sicherheitsthermostat Boiler	Termostato Sicurezza Caldaia
Tv =	Sonda Vapor	Sonde Vapeur	Steam Probe	Sonde Dampf	Sonda Vapore
VAC =	Bomba Vaciado	Pompe Vidange	Vacuum Pump	Ablaspumpe	Pompa scarico
VAd =	Electro válvula Aclarado	Électrovanne Rinçage	Rinsing Solenoid Valve	Elektroventil Klarspülen	Elettrovalvola Risciacquo
VC =	Ventilador Soplante	Ventilateur Soufflant	Blowing Fan	Ventilator Gebläse	Ventilatore Soffiante
VCN =	Electro válvula Condensación	Électrovanne Condensation	Condensation Solenoid Valve	Elektroventil Kondensierung	Elettrovalvola Condensazione
VDV =	Electro válvula Llenado Caldera	Électrovanne Remplissage Chaudière	Chamber Filling Solenoid Valve	Elektroventil Füllung Boiler	Elettrovalvola di Riempimento Caldaia
VE =	Ventilador Cuadro Eléctrico	Ventilateur Tableau Électrique	Fan Switchboard	Ventilator Elektrotafel	Ventilatore Quadro Elettrico
VHM =	Electro válvula Humidificador	Électrovanne Humidificateur	Humidifier Solenoid Valve	Elektroventil BefeuchtungsVorrichtung	Elettrovalvola Umidificatore
VLav =	Electro válvula Lavado	Électrovanne Lavage	Washing Solenoid Valve	Elektroventil Waschen	Elettrovalvola Lavaggio
W =	Variador Velocidad	Variateur Vitesse	Speed Variator	Geschwindigkeitsregler	Variatore di Velocità
<b>COLOR</b>	<b>COLORES</b>	<b>COULEURS</b>	<b>COLOUR</b>	<b>FARBEN</b>	<b>COLORE</b>
Va =	Azul	Bleu	Blue	Blau	Blu
am =	Amarillo	Jaune	Yellow	Gelb	Giallo
am/ve =	Amarillo/verde	Jaune / vert	Yellow / green	Gelb/grün	Giallo/verde
b =	Blanco	Blanc	White	Weiß	Bianco
g =	Gris	Gris	Grey	Grau	Grigio
m =	Marrón	Marron	Brown	Braun	Marrone
n =	Negro	Noir	Black	Schwarz	Nero
na =	Naranja	Orange	Orange	Orange	Arancio
r =	Rojo	Rouge	Red	Rot	Rosso
rs =	Rosa	Rose	Pink	Rosa	Roseo
ve =	Verde	Vert	Green	Grün	Verde
vi =	Violeta	Violet	Purple	Violett	Viola



- 1 T-303032  
 2 T-303033  
 3 T-303034  
 4 T-303035  
 5 T-303036  
 6 T-303030  
 7 T-303022  
 8 T-303026  
 9 T-303029  
 10 T-303031  
 11 T-303037  
 Esquema teórico T-303038  
 Leyenda T-303042  
 Indicador comp. T-303043



Plano Montaje HGV 380V		T303044000	
Dx. N°	Pieza	Cart.	Materia/Material
Dx. N°	Aldaketa/Modificaciones	Nonk. proposatua/Propuesta de	Data/Fecha
-	-	-	-
-	-	-	-
-	-	-	-
-	-	-	-
-	-	-	-
-	-	-	-
Sinadura/Firma		Data/Fecha	
Marrazduz/Dibujado		12-02-2003	
Proiektatua/Proyectado		12-02-2003	
Egiazatua/Comprobado		12-02-2003	
Eskala/Escala			
<b>HORNOS</b> Fagor Industrial, Koop. E.L., Mugelua		Gainazal akabera/Tratamiento	
		Perdi orokortak/Tolerancias generales	
		50 ± 100 ± 0.3	
		5 ± 25 ± 0.4	
		25 ± 50 ± 0.6	
		α ± 1	
		Gainazal perdoa/Mecanizado superficial	
		Plano Zk./Plano N°	
		HD-42884	
		Zk. ord. du	
		Zk. gatik ord.	