
DESPIECE TECNICO

**Hornos Mixtos
Fours Mixtes
Combi Ovens
HeiBluftdämpfer
Forno Misti**

SERIE "EVOLUTION"

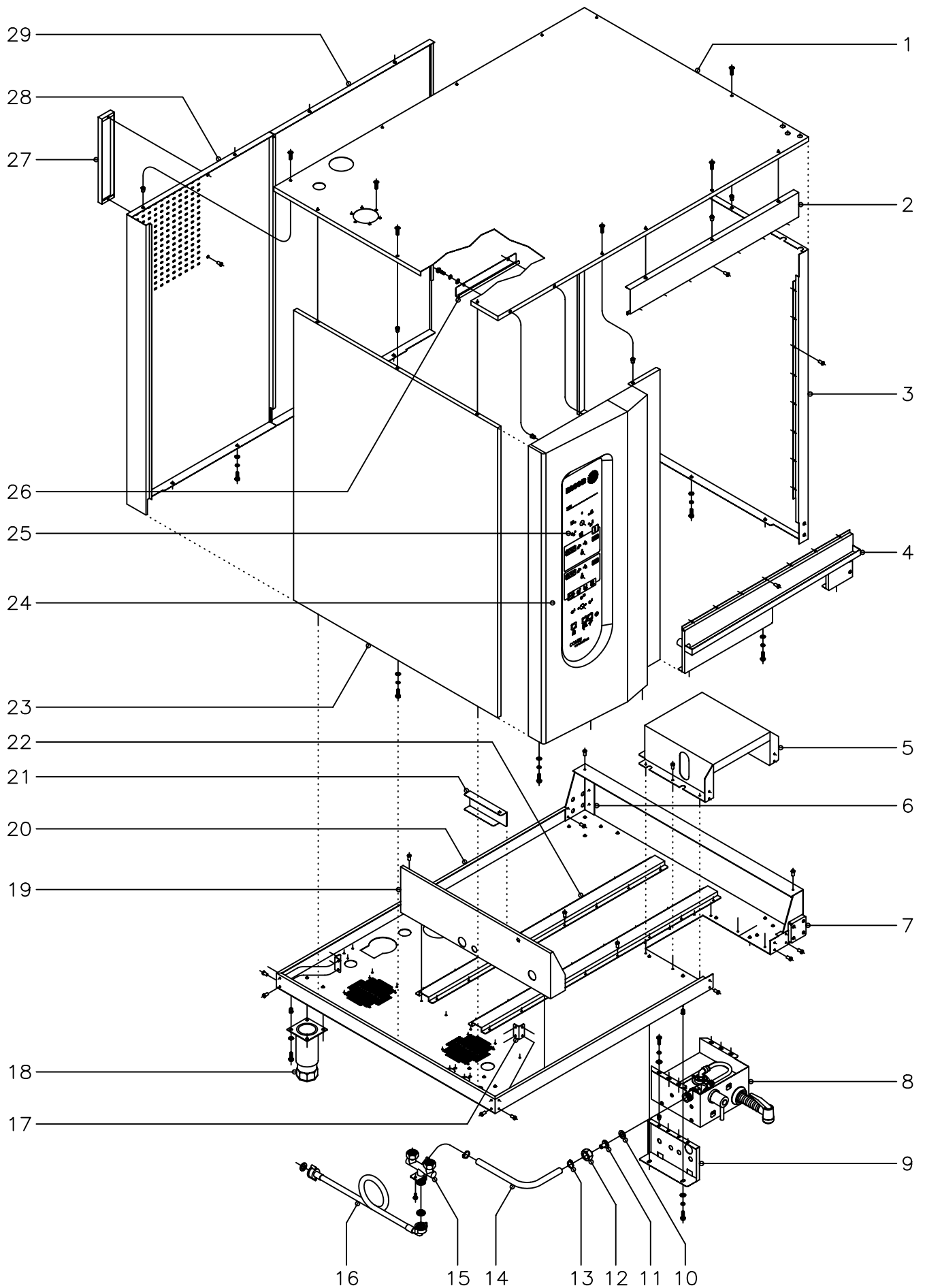
Modelos:

HEM-10/21

Mayo 2005 May



Fagor Industrial



N plano C-1643	Firma 	Fecha 5-2005	Aparato MUEBLE HORNO ELECTRICO HEM-10/21	Lamina 1	Fagor Industrial S.Coop. FAGOR Ofite
-------------------	--	-----------------	--	-------------	--

MOD.		HORNO ELECTRICO		ZONA	MUEBLE						PLANO	C-1643
ITEM	CODIGO	DENOMINACION	TEXTO	HEM-10/21								NOTAS
1	T322803	Panel superior exterior	Outer upper panel	1								
	Q221342	Remache exagonal M-5	Hexagonal rivet M-5	13								
	Q152004	Tornillo aplastado M-5x13	Flat screw M-5x13	13								
2	T302804	Panel anterior superior	Upper front panel	1								
	Q412002	Remache tubular Ø4x7,5	Tubular rivet Ø4x7.5	7								Amarre a cuba
3	T302803	Panel exterior derecho	Right outer panel	1								
	Q012042	Tornillo exagonal M-6x15	Hexagonal screw M-6x15	3								Amarre inferior
	Q262040	Arandela grower A-6	Grower washer A-6	3								Amarre inferior
	Q232040	Arandela plana A-6	Flat washer A-6	3								Amarre inferior
	Q221343	Remache exagonal M-6	Hexagonal rivet M-6	3								Amarre inferior
	Q412002	Remache tubular Ø4x7,5	Tubular rivet Ø4x7.5	7								Amarre a cuba
4	T302848	Recogeaguas completo	Complete water collector	1								
	Q012042	Tornillo exagonal M-6x15	Hexagonal screw M-6x15	3								Amarre inferior
	Q262040	Arandela grower A-6	Grower washer A-6	3								Amarre inferior
	Q232040	Arandela plana A-6	Flat washer A-6	3								Amarre inferior
	Q221343	Remache exagonal M-6	Hexagonal rivet M-6	3								Amarre inferior
	Q412002	Remache tubular Ø4x7,5	Tubular rivet Ø4x7.5	7								Amarre a cuba
5	T302830	Alojamiento ducha	Shower housing	1								
	Q412002	Remache tubular Ø4x7,5	Tubular rivet Ø4x7.5	13								Amarre a base
6	T302816	Refuerzo apoyo base posterior	Rear base reinforcement	1								
	Q412002	Remache tubular Ø4x7,5	Tubular rivet Ø4x7.5	6								Amarre a base
7	T302836	Refuerzo apoyo base anterior com.	Com. front base holder rein	1								
	Q412002	Remache tubular Ø4x7,5	Tubular rivet Ø4x7.5	6								Amarre a base
	110002860	KIT DUCHA HORNO 10 / 21	OVEN SHOWER KIT 10 / 2	1								
8	Z279506	Grupo ducha mini	Mini shower group	1								Componente kit
	Q152004	Tornillo aplastado M-5x13	Flat screw M-5x13	6								Componente kit
	Q262030	Arandela grower A-5	Grower washer A-5	6								Componente kit
	Q232030	Arandela plana A-5	Flat washer A-5	6								Componente kit
	Q221342	Remache exagonal M-5	Hexagonal rivet M-5	6								Componente kit

MOD.		HORNO ELECTRICO			ZONA		MUEBLE					PLANO		C-1643
ITEM	CODIGO	DENOMINACION	TEXTO	HEM-10/21									NOTAS	
9	T302831	Amarre ducha	Shower anchoring	2									Componente kit	
	Q012042	Tornillo exagonal M-6x15	Hexagonal screw M-6x15	3									Componente kit	
	Q262040	Arandela grower A-6	Grower washer A-6	3									Componente kit	
	Q232040	Arandela plana A-6	Flat washer A-6	3									Componente kit	
	Q221343	Remache exagonal M-6	Hexagonal rivet M-6	3									Componente kit	
10	Q306039	Arandela junta Ø25xØ16,1x1,5	Joint washer Ø25xØ16.1x1.5	1									Componente kit	
11	T305067	Entrada de agua a ducha	Shower water inlet	1									Componente kit	
12	Q222013	Tuerca 3/4" gas	Nut 3/4" Gas	1									Componente kit	
13	Q881302	Abrazadera 12 - 20	Clamp 12 - 20	2									Componente kit	
14	3676900	Tubo de goma Ø17xØ10x850	Rubber tubing Ø17xØ10x850	1									Componente kit	
15	T305063	Entrada de agua completa	Complete water inlet	1									Componente kit	
	Q012021	Tornillo exagonal M-4x10	Hexagonal screw M-4x10	2									Componente kit	
16	Z601114	Manguera entrada de agua	Water inlet hose	1										
	Z701132	Filtro-junta entrada de agua	Filter-joint water inlet	1										
	Q307031	Junta mangueraØ24xØ14x3	Hose joint Ø24xØ14x3	1										
17	T302837	Cantonera base	Base corner protector	2										
	Q412002	Remache tubular Ø4x7,5	Tubular rivet Ø4x7.5	8									Amarre a base	
18	X260151	Pata regulable	Ajustable leg	4										
	Q012031	Tornillo exagonal M-5x10	Hexagonal screw M-5x10	16										
	Q242030	Arandela abanico A-5	Fan shaped washer A-5	16										
	Q221342	Remache exagonal M-5	Hexagonal rivet M-5	16										
19	T322808	Apoyo cuerpo de horno	Oven body holder	1										
	Q412002	Remache tubular Ø4x7,5	Tubular rivet Ø4x7.5	13									Amarre a base	
20	T322801	Base exterior de horno 10 / 21	Oven outer base 10 / 21	1										
21	T352803	Apoyo desagüe	Waste pipe support	1										
22	T302818	Refuerzo longitudinal base	Base longitudinal reinforcement	2										
	Q412002	Remache tubular Ø4x7,5	Tubular rivet Ø4x7.5	32									Amarre a base	
23	T302806	Panel exterior izquierdo	Left outer panel	1										

MOD.		HORNO ELECTRICO			ZONA		MUEBLE					PLANO		C-1643
ITEM	CODIGO	DENOMINACION	TEXTO	HEM-10/21									NOTAS	
	Q012042	Tornillo exagonal M-6x15	Hexagonal screw M-6x15	3									Amarre inferior	
	Q262040	Arandela grower A-6	Grower washer A-6	3									Amarre inferior	
	Q232040	Arandela plana A-6	Flat washer A-6	3									Amarre inferior	
	Q221343	Remache exagonal M-6	Hexagonal rivet M-6	3									Amarre inferior	
24	T322806	Panel portamandos	Control panel	1										
	Q012042	Tornillo exagonal M-6x15	Hexagonal screw M-6x15	3									Amarre inferior	
	Q262040	Arandela grower A-6	Grower washer A-6	3									Amarre inferior	
	Q232040	Arandela plana A-6	Flat washer A-6	3									Amarre inferior	
	Q221343	Remache exagonal M-6	Hexagonal rivet M-6	3									Amarre inferior	
	Q412002	Remache tubular Ø4x7,5	Tubular rivet Ø4x7.5	8									Amarre a cuba	
25	T323008	Serigrafia HEM-10 / 21	Serigraphy HEM-10 / 21	1										
26	T302834	Canaleta portamandos	Control feed through	1										
	Q012042	Tornillo exagonal M-6x15	Hexagonal screw M-6x15	2										
	Q262040	Arandela grower A-6	Grower washer A-6	2										
	Q232040	Arandela plana A-6	Flat washer A-6	2										
	Q221343	Remache exagonal M-6	Hexagonal rivet M-6	2										
27	T302835	Separador posterior	Rear separator	1										
	Q412002	Remache tubular Ø4x7,5	Tubular rivet Ø4x7.5	2										
28	T322811	Panel posterior exterior elec.	Electrical outer rear panel	1										
29	T302850	Panel posterior exterior comun	Common outer rear panel	1										
	Q012042	Tornillo exagonal M-6x15	Hexagonal screw M-6x15	4									Amarre inferior	
	Q262040	Arandela grower A-6	Grower washer A-6	4									Amarre inferior	
	Q232040	Arandela plana A-6	Flat washer A-6	4									Amarre inferior	
	Q221343	Remache exagonal M-6	Hexagonal rivet M-6	4									Amarre inferior	

N plano
C-1644

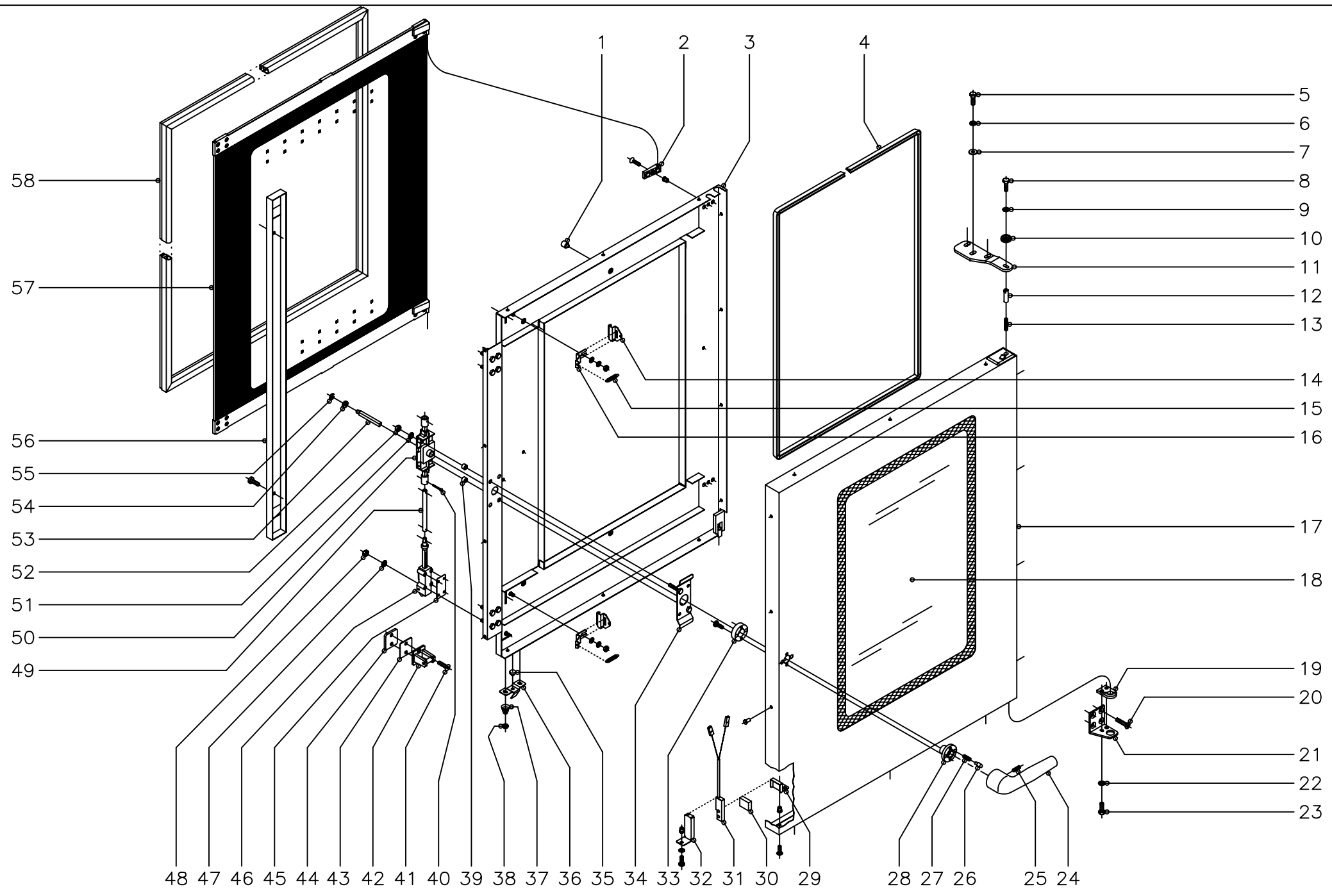


Fecha
5-2005

Aparato
HORNO ELECTRICO HEM-10/21

Lamina
2

Fagor Industrial S.Coop.
Onote
FAGOR



MOD.		HORNO ELECTRICO		ZONA	PUERTA							PLANO	C-1644
ITEM	CODIGO	DENOMINACION	TEXTO	HEM-10/21									NOTAS
	1100003101	KIT Puerta completa 10/21	Complete door KIT 10/21	1									
1	T300513	Tope cristal interior	Inner glass door stop	6									
2	R670615	Base de bisagra	Hinge base	2									
	Q042032	Tornillo avellanado M-5x15	Countersunk screw M-5x15	2									
	Q222011	Remache exagonal M-5	Hexagonal rivet M-5	2									
3	T300501	Contrapuerta completa	Complete inner door	1									
4	3715200	Junta cristal L=2500	Glass joint L=2500	1									
5	Q012053	Tornillo exagonal M-8x20	Hexagonal screw M-8x20	3									
6	Q242050	Arandela abanico A-8	Fan shaped washer A-8	3									
7	Q302025	Arandela plana Ø8,4x20x1,5	Flat washer Ø8,4x20x1.5	3									
8	Q012042	Tornillo exagonal M-6x15	Hexagonal screw M-6x15	1									
9	Q242040	Arandela abanico A-6	Fan shaped washer A-6	1									
10	R662807	Arandela amarre puerta	Door anchoring washer	1									
11	T300520	Bisagra superior	Upper hinge	1									
12	R660534	Eje superior	Upper shaft	1									
13	Z850519	Resorte	Spring	1									
14	T300514	Pestillo sujecion cristal interior	Inner glass fastening latch	2									
15	R660605	Muelle tensor pestillo	Latch tensor spring	2									
16	R670612	Base de pestillo	Latch base	2									
	Q302022	Arandela plana Ø16xØ6x1,2	Flat washer Ø16xØ6x1.2	2									
	Q242030	Arandela abanico A-5	Fan shaped washer A-5	2									
	Q162030	Tuerca exagonal M-5	Hexagonal nut M-5	2									
17	T300523	Panel puerta completa	Complete door panel	1									
	Q412002	Remache tubular Ø4x7,5	Tubular rivet Ø4x7.5	14									
18	T300505	Cristal exterior	Outer glass	1									
19	R660549	Guia eje inferior	Lower shaft guide	1									
20	Q062040	Tornillo avellanado M-6x16	Countersunk screw M-6x16	4									
21	T300521	Bisagra inferior	Lower hinge	1									

MOD.	HORNO ELECTRICO	ZONA	PUERTA	PLANO	C-1644
------	-----------------	------	--------	-------	--------

ITEM	CODIGO	DENOMINACION	TEXTO	HEM-10/21										NOTAS
22	Q242040	Arandela abanico A-6	Fan shaped washer A-6	2										
23	Q012041	Tornillo exagonal M-6x10	Hexagonal screw M-6x10	2										
24	T130502	Manilla	Handle	1										
25	Q132042	Varilla roscada M-6x15	Threaded rod M-6x15	1										
26	T130507	Piton enganche	Fastener spike	2										
27	T130506	Resorte	Spring	2										
28	T130515	Guia manilla	Handle guide	1										
29	T300525	Soporte iman	Magnet holder	1										
30	T300526	Iman	Magnet	1										
31	Z100522	Interruptor magnetico	Magnetic switch	1										
32	T302819	Soporte interruptor magnet. puerta	Door magnetic switch holder	1										
	Q221342	Remache exagonal M-5	Hexagonal rivet M-5	1										
	Q242030	Arandela abanico A-5	Fan shaped washer A-5	1										
	Q152004	Tornillo aplastado M-5x13	Flat screw M-5x13	1										
33	T130514	Soporte resortes	Spring holder	1										
	Q032032	Tornillo alomado M-5x15	Curved screw M-5x15	2										
34	T130511	Suplemento fijacion cerradura	Lock fixing supplement	1										
35	T300518	Tapon cierre canaleta	Feed through closing plug	1										
36	T300517	Chapa cierre canaleta	Feed through closing cover	1										
37	T300524	Resorte conico	Conical spring	2										
38	Q162030	Tuerca exagonal M-5	Hexagonal nut M-5	2										
39	Z608410	Casquillo	Bushing	2										
40	Q352001	Pasador de aletas Ø2x15	Cotter pin Ø2x15	4										
41	Q042045	Tornillo avellanado M-6x30	Countersunk screw M-6x30	4										
42	T110506	Enganche	Fastener	2										
43	R660538	Calzo de enganche	Coupling chock	4										
44	T300519	Suplemento enganche	Fastener supplement	2										
45	T080503	Suplemento elemento cierre	Closing element supplement	6										
46	T080504	Elemento de cierre	Closing component	2										

N plano
C-1645

Firma

Fecha
5-2005

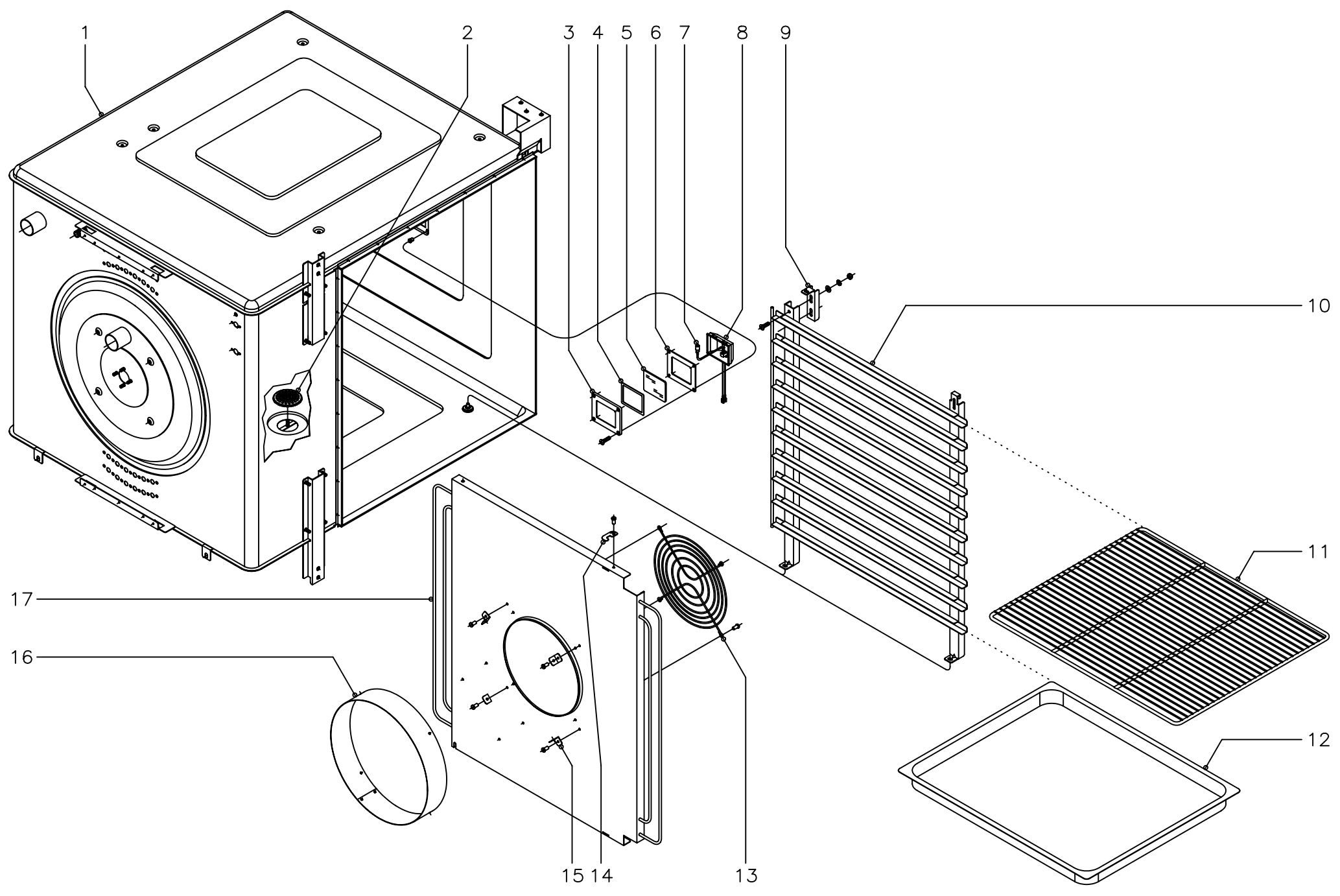
Aparato
HORNO ELECTRICO HEM-10/21

MUEBLE INTERIOR

Lamina
3

Fagor Industrial S. Coop.
Oñate

FAGOR



MOD.		HORNO ELECTRICO		ZONA	MUEBLE INTERIOR							PLANO	C-1645
ITEM	CODIGO	DENOMINACION	TEXTO	HEM-10/21									NOTAS
1	T322600	Cuerpo interior completo	Complete inner body	1									
2	T302625	Filtro desague completo	Complete waste pipe filter	1									
3	T303047	Pletina amarre lampara	Lamp anchoring platen	1									
	Q042022	Tornillo avellanado M-4x15	Countersunk screw M-4x15	4									
	Q222041	Remache exagonal M-4	Hexagonal rivet M-4	4									
4	T303027	Junta interior lampara	Lamp inner joint	1									
5	T303025	Cristal lampara	Lamp glass	1									
6	T303026	Junta exterior lampara	Lamp outer joint	1									
7	R663013	Lampara 10 W., 12 V.	Lamp 10 W, 12 V	1									
8	T303023	Portalamparas	Lamp holder	1									
9	T302660	Suplemento guias	Guide supplement	2									
	Q152004	Tornillo aplastado M-5x13	Flat screw M-5x13	4									
	Q302022	Arandela plana Ø16xØ6x1,2	Flat washer Ø16xØ6x1.2	4									
	Q242030	Arandela abanico A-5	Fan shaped washer A-5	4									
	Q162030	Tuerca exagonal M-5	Hexagonal nut M-5	4									
10	T302620	Conjunto guias derecho	Right guide set	1									
s/n	T302624	Conjunto guias izquierdo	Left guide set	1									
11	R682676	Parrilla de horno G.N.-2/1	Oven grill G.N.-2/1	1									
12	R032605	Bandeja de horno G.N.-2/1, h=40	Oven tray G.N.-2/1, h=40	1									
13	R662661	Proteccion de turbina	Turbine protection	1									
	Q412002	Remache tubular Ø4x7,5	Tubular rivet Ø4x7.5	4									
14	T302635	Enganche cubreventilador	Fan cover fastener	2									
	Q412002	Remache tubular Ø4x7,5	Tubular rivet Ø4x7.5	2									
15	T302643	Fijacion suplemento cubreventilad.	Fan cover suplement bindin	4									
	Q412002	Remache tubular Ø4x7,5	Tubular rivet Ø4x7.5	4									
16	T322603	Suplemento cubreventilador	Fan cover supplement	1									
	Q412002	Remache tubular Ø4x7,5	Tubular rivet Ø4x7.5	4									
17	T302633	Cubreventilador completo	Complete fan cover	1									

N. plano
C-1646

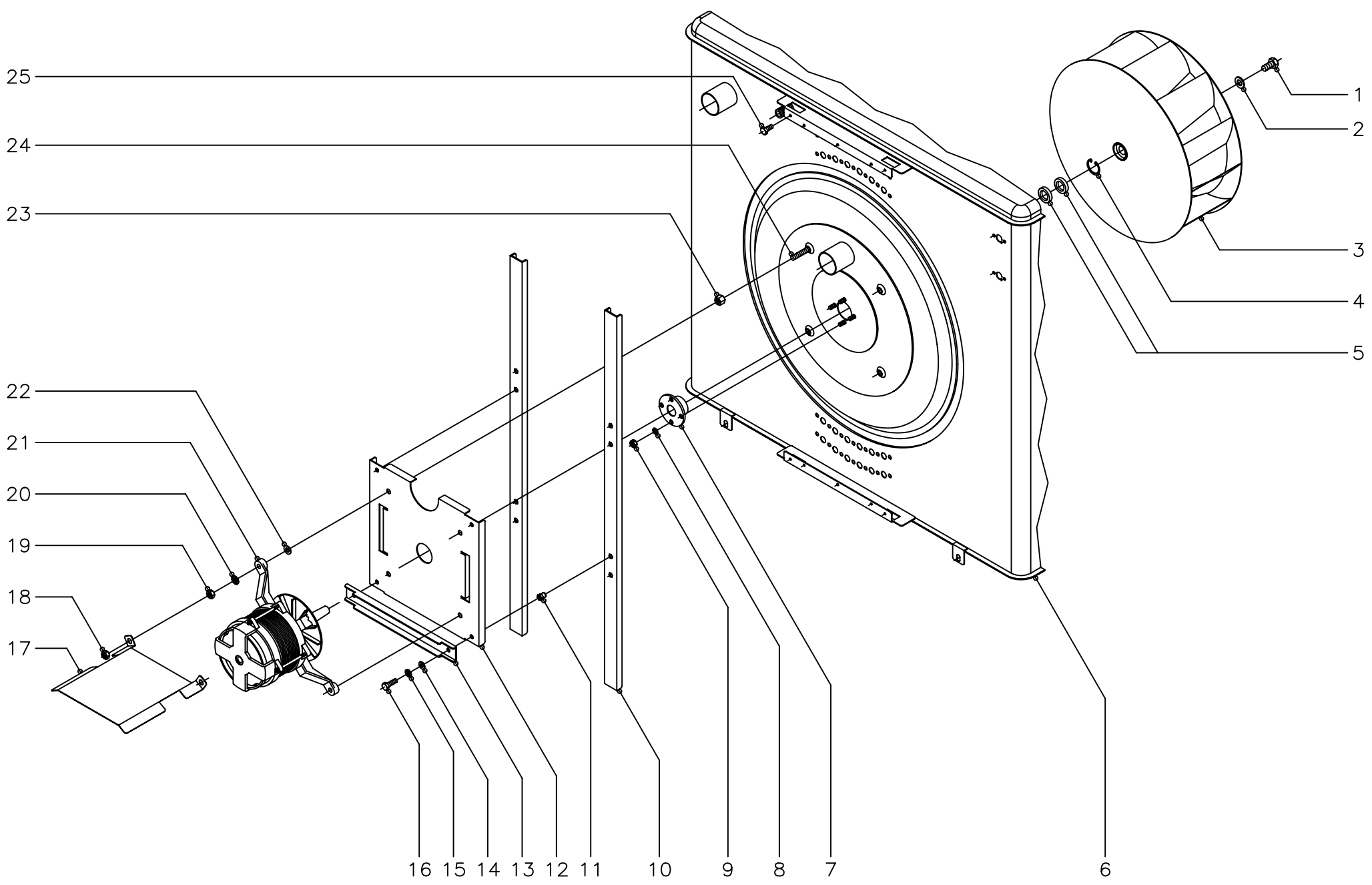


Fecha
5-2005

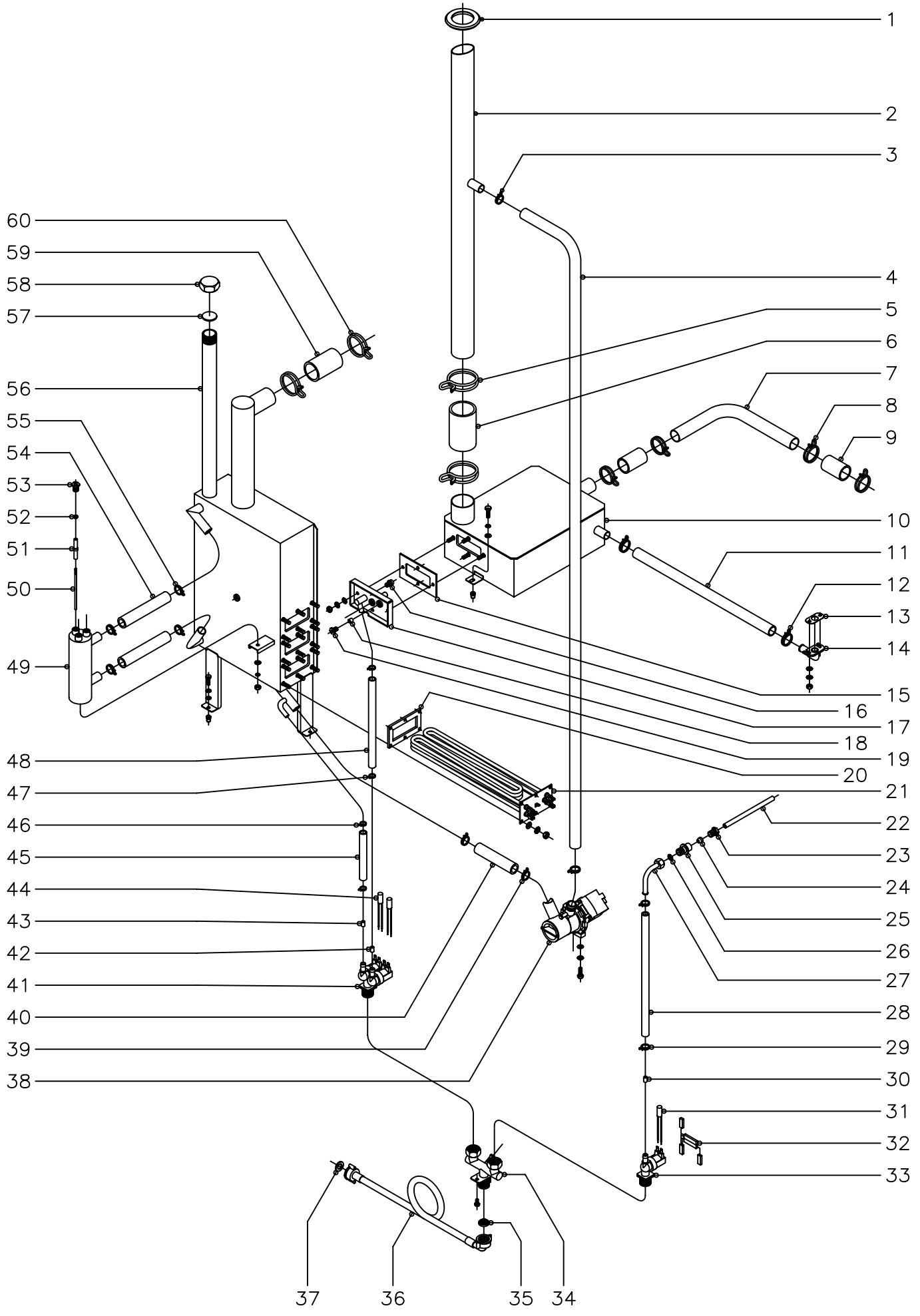
Aparato
HORNO ELECTRICO HEM-10/21
TURBINA

Lamina
4

Fagor Industrial S. Coop.
Onote
FAGOR



MOD.		HORNO ELECTRICO			ZONA		TURBINA					PLANO		C-1646
ITEM	CODIGO	DENOMINACION	TEXTO	HEM-10/21									NOTAS	
1	Q012063	Tornillo exagonal M-10x20	Hexagonal screw M-10x20	1										
2	R763010	Arandela seguridad Hanning	Hanning safety washer	1										
3	T303015	Turbina	Turbine	1										
4	Q302023	Anillo de seguridad Ø 28x1,2	Safety ring Ø 28x1.2	1										
5	R662627	Reten Ø 28xØ 17x7	Retainer Ø 28xØ 17x7	2										
6	-	Costado izquierdo de horno	Left side of oven	1										
7	T302629	Casquillo reten	Bushing retainer	1										
8	Q262040	Arandela grower A-6	Grower washer A-6	4										
9	Q162040	Tuerca exagonal M-6	Hexagonal nut M-6	4										
10	T302628	Perfil soporte motor	Motor holder profile	2										
11	Q221342	Remache exagonal M-5	Hexagonal rivet M-5	4										
12	T302627	Soporte motor	Motor holder	1										
13	T302649	Refuerzo motor	Motor reinforcement	2										
14	Q232030	Arandela plana A-5	Flat washer A-5	4										
15	Q242030	Arandela abanico A-5	Fan shaped washer A-5	4										
16	Q012032	Tornillo exagonal M-5x15	Hexagonal screw M-5x15	4										
17	T302665	Tejadillo motor	Motor roof	1										
18	Q162050	Tuerca exagonal M-8	Hexagonal nut M-8	2										
19	Q162050	Tuerca exagonal M-8	Hexagonal nut M-8	4										
20	Q242050	Arandela abanico A-8	Fan shaped washer A-8	4										
21	T323022	Motor de turbina	Turbine motor	1										
22	Q232050	Arandela plana A-8	Flat washer A-8	4										
23	T302638	Distanciador motor	Motor spacer	4										
24	Q012056	Tornillo exagonal M-8x40	Hexagonal screw M-8x40	4										
25	Q012031	Tornillo exagonal M-5x10	Hexagonal screw M-5x10	4										



N plano
C-1647

Firma
[Signature]

Fecha
5-2005

Aparato CONDUCCIONES AGUA,VAPOR Y DESAGUE
HORNO ELECTRICO HEM-10/21

Lamina
5

Fagor Industrial S.Coop. **FAGOR**
Orate

MOD.	HORNO ELECTRICO	ZONA	CONDUCCIONES AGUA,VAPOR Y DESAGUE	PLANO	C-1647
------	------------------------	------	--	-------	---------------

ITEM	CODIGO	DENOMINACION	TEXTO	HEM-10/21										NOTAS
1	R662813	Pasamuros chimenea	Wire protection Chimney	1										
2	T325050	Chimenea completa	Complete chimney	1										
3	Q901311	Abrazadera elastica Ø26,7 - 28,1	Elastic clamp Ø26.7 - 28.1	2										
4	3715600	Tubo silicona Ø26xØ18x900	Silicone tubing Ø26xØ18x900	1										
5	Q901313	Abrazadera elastica 62 - 66	Elastic clamp 62 - 66	2										
6	R345020	Tubo empalme generador	Generator coupling tubing	1										
7	T325017	Conducto desagüe horno	Oven drain conduct	1										
8	Q901307	Abrazadera elastica Ø37,7 - 39,7	Elastic clamp Ø26.7 - 39.7	4										
9	3714100	Tubo silicona Ø38xØ31x60	Silicone tubing Ø38xØ31x60	2										
10	T325013	Caja desagüe completa	Complete drainage box	1										
	Q012042	Tornillo exagonal M-6x15	Hexagonal screw M-6x15	2										
	Q232040	Arandela plana A-6	Flat washer A-6	2										
	Q262040	Arandela grower A-6	Grower washer A-6	2										
	Q162040	Tuerca exagonal M-6	Hexagonal nut M-6	2										
11	3715600	Tubo recogeaguas Ø26xØ18x800	Water collection tubing Ø26xØ18x800	1										
12	Q901311	Abrazadera elastica Ø26,7 - 28,1	Elastic clamp Ø26.7 - 28.1	2										
13	T302845	Junta recogeaguas	Water collector joint	1										
14	T302844	Desague recogeaguas	Water collection waste pipe	1										
	Q232030	Arandela plana A-5	Flat washer A-5	2										
	Q242030	Arandela abanico A-5	Fan shaped washer A-5	2										
	Q162030	Tuerca exagonal M-5	Hexagonal nut M-5	2										
15	T325066	Junta fijacion sonda	Probe clamping joint	1										
16	T115086	Tobera R.1/8" (Ø1,5)	Nozzle R.1/8" (Ø1.5)	1										
17	T325065	Fijacion sonda completa	Complete probe clamping	1										
	Q232030	Arandela plana A-5	Flat washer A-5	4										
	Q242030	Arandela abanico A-5	Fan shaped washer A-5	4										
	Q162030	Tuerca exagonal M-5	Hexagonal nut M-5	4										
18	3712400	Tubo-junta de silicona Ø8xØ3x20	Silicone tubing-joint Ø8xØ3x20	1										
19	R662629	Racord cierre sonda	Probe closing adaptor	1										

MOD.		HORNO ELECTRICO		ZONA	CONDUCCIONES AGUA,VAPOR Y DESAGUE							PLANO	C-1647
ITEM	CODIGO	DENOMINACION	TEXTO	HEM-10/21								NOTAS	
20	T323007	Junta resistencia calderin	Drum resistor joint	3									
21	T323006	Resistencia 3x3000 W., 230 V.	Resistor 3x3000 W, 230 V	3								Generador	
	Q232030	Arandela plana A-5	Flat washer A-5	18									
	Q242030	Arandela abanico A-5	Fan shaped washer A-5	18									
	Q163030	Tuerca exagonal M-5	Hexagonal nut M-5	18									
22	R665024	Tubo conduccion inyector	Injector conduction tubing	1									
23	R695003	Manguito cierre	Closing sleeve	1									
24	R695004	Bicono	Bicone	1									
25	-	Casquillo soldado a cuerpo horno	Bushing welded onto oven t	1									
26	Q306026	Arandela junta Ø14xØ8,5x1,5	Seal washer Ø14xØ8.5x1.5	1									
27	R695017	Tubo conduccion agua completo	Complete water conduction	1									
28	3676900	Tubo goma negra Ø17xØ10x900	Black rubber tubing Ø17xØ	1									
29	Q901310	Abrazadera elastica Ø16,8 - 17,7	Elastic clamp Ø16.8 - 17.7	2									
30	R665041	Regulador caudal 0,25 l./min. (rosa)	Flow regulator 0.25 l/min (p	1									
31	Z233012	Condensador antiparasitario	Antiparasistic condensor	1									
32	T323027	PTC Electrovalvula 5"	PTC Solenoide valve 5"	1									
33	Z701135	Electrovalvula entrada agua simple	Simple water inlet electrova	1									
34	T305063	Entrada agua completa	Complete water inlet	1									
	Q012021	Tornillo exagonal M-4x10	Hexagonal screw M-4x10	2									
35	Z701132	Filtro-junta entrada de agua	Filter-joint water inlet	1									
36	Z601114	Manguera entrada de agua	Water inlet hose	1									
37	Q307031	Junta manguera Ø24xØ14x3	Hose joint Ø24xØ14x3	1									
21	Z220901	Bomba desague 30 W. (50Hz.)	Pump waste pipe 30 W (50	1									
38	Z223501	Bomba desague 30 W. (60Hz.)	Pump waste pipe 30 W (60	1									
	Q012032	Tornillo exagonal M-5x15	Hexagonal screw M-5x15	2									
	Q242030	Arandela abanico A-5	Fan shaped washer A-5	2									
	Q232030	Arandela plana A-5	Flat washer A-5	2									
39	Q901311	Abrazadera elastica Ø26,7 - 28,1	Elastic clamp Ø26.7 - 28.1	2									
40	3715600	Tubo silicona Ø26xØ18x100	Silicone tubing Ø26xØ18x1	1									

MOD.		HORNO ELECTRICO		ZONA	CONDUCCIONES AGUA,VAPOR Y DESAGUE						PLANO	C-1647
ITEM	CODIGO	DENOMINACION	TEXTO	HEM-10/21								NOTAS
41	P255001	Electrovalvula doble	Double solenoide valve	1								
42	P443042	Regulador caudal 3 l./min. (negro)	Flow regulator 3 l/min (black)	1								
43	Z601156	Regulador caudal 8 l./min. (rojo)	Flow regulator 8 l/min (red)	1								
44	Z233012	Condensador antiparasitario	Antiparasistic condensor	2								
45	3676900	Tubo goma negra Ø17xØ10x400	Black rubber tubing Ø17xØ10	1								
46	Q901310	Abrazadera elastica Ø16,8 - 17,7	Elastic clamp Ø16.8 - 17.7	2								
47	Q901310	Abrazadera elastica Ø16,8 - 17,7	Elastic clamp Ø16.8 - 17.7	2								
48	3676900	Tubo goma negra Ø17xØ10x900	Black rubber tubing Ø17xØ10	1								
49	T325040	Cuerpo niveles completo	Complete levels body	1								
	Q232040	Arandela plana A-6	Flat washer A-6	1								
	Q262040	Arandela grower A-6	Grower washer A-6	1								
	Q162040	Tuerca exagonal M-6	Hexagonal nut M-6	1								
50	R345060	Electrodo nivel alto	High level electrode	1								
	R345063	Electrodo nivel bajo	Low level electrode	1								
	R345064	Electrodo de masa	Earth electrode	1								
51	R345059	Guia aislante de electrodos	Electrode insulator guide	3								
52	Q163020	Tuerca exagonal M-4	Hexagonal nut M-4	6								
53	R345058	Racord amarre electrodos	Electrodes anchoring adapt	3								
54	3715600	Tubo silicona Ø26xØ18x250	Silicone tubing Ø26xØ18x25	2								
55	Q901311	Abrazadera elastica Ø26,7 - 28,1	Elastic clamp Ø26.7 - 28.1	4								
56	T325000	Generador vapor completo	Complete steam generator	1	KIT COMPLETO	COMPLET KIT	110000	3106				
	T325053	Aislante generador	Generator insulator	1								
57	R015011	Arandela junta Ø34x3	Joint washer Ø34x3	1								
58	R015010	Tuerca tapon 1"	Plug nut 1"	1								
59	3710900	Tubo silicona Ø51xØ43x100	Silicone tubing Ø51xØ43x10	1								
60	Q901312	Abrazadera elastica 50.6 - 53.2	Elasticic clamp 50.6 - 53.2	2								

N plano
C-1648

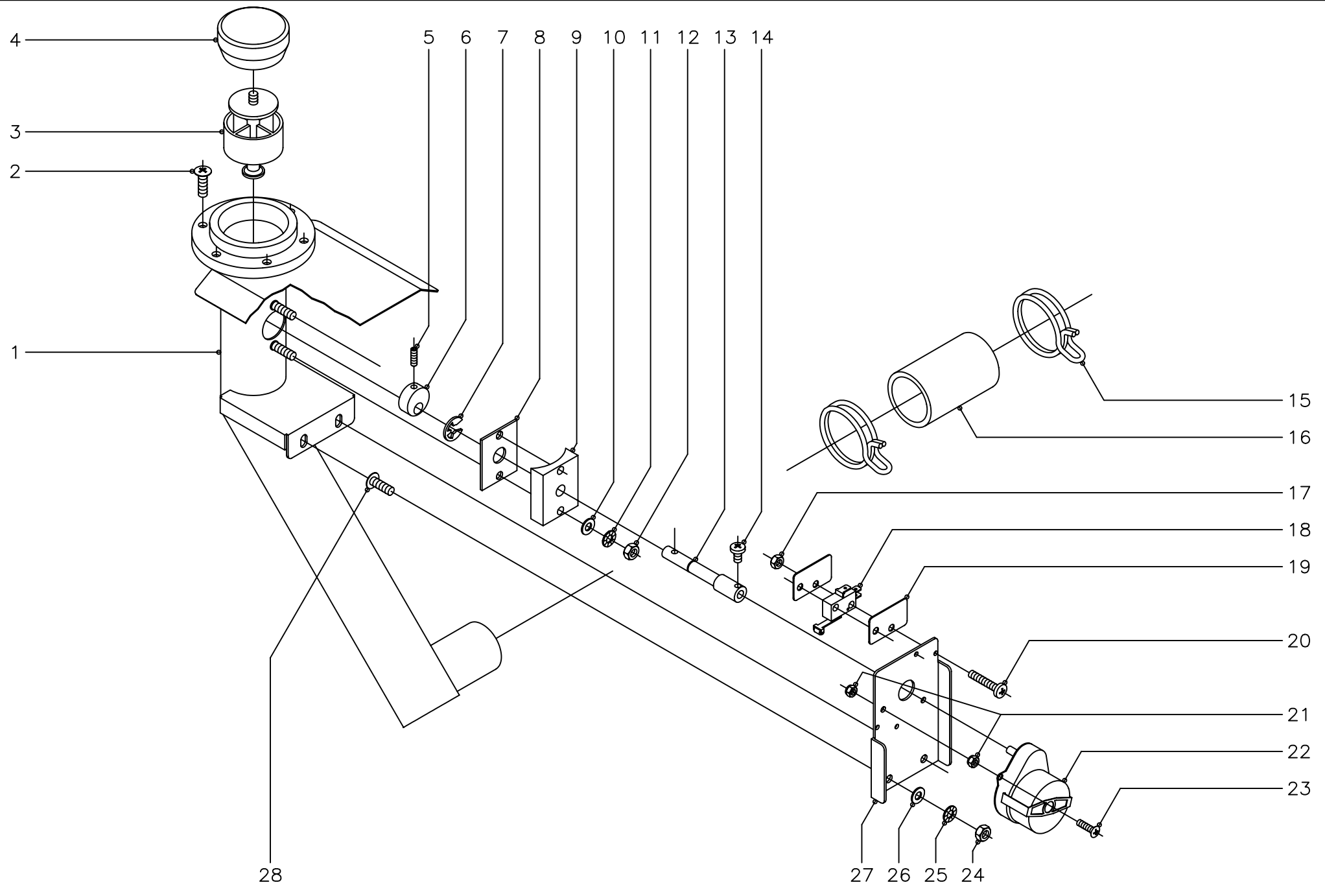


Fecha
5-2005

Aparato
HORNO ELECTRICO HEM-10/21

Lamina
6

Fagor Industri al. S. Coop.
Oñate



MOD.		HORNO ELECTRICO		ZONA	CIERRE CHIMENEA							PLANO	C-1648
ITEM	CODIGO	DENOMINACION	TEXTO	HEM-10/21									NOTAS
1	T325021	Conjunto chimenea	Chimney set	1									
2	Q152004	Tornillo aplastado M-5x13	Flat screw M-5x13	6									
3	T325051	Guia retencion vapores	Vapour retention guide	1									
4	T325055	Retencion de vapor	Retencion de vapor	1									
5	Q132045	Varilla roscada M-4x16	Threaded rod M-4x16	1									
6	T325032	Leva eje chimenea	Chimney shaft cam	1									
7	Q271006	Arandela de seguridad Ø8	Safety washer Ø8	1									
8	T325030	Junta eje chimenea	Chimney shaft joint	1									
9	T325029	Guia eje chimenea	Chimney shaft guide	1									
10	Q232030	Arandela plana A-5	Flat washer A-5	2									
11	Q242030	Arandela abanico A-5	Fan shaped washer A-5	2									
12	Q162030	Tuerca exagonal M-5	Hexagonal nut M-5	2									
13	T325031	Eje chimenea	Chimney shaft	1									
14	Q151320	Tornillo alomado M-4x6	Curved screw M-4x6	1									
15	Q901312	Abrazadera elastica 50.6 - 53.2	Elastic clamp 50.6 - 53.2	2									
16	3710900	Tube silicona Ø51xØ43x100	Silicone tubing Ø51xØ43x100	1									
17	Q221350	Tuerca exagonal autoblocante M-3	Selflocking hexagonal nut M-3	4									
18	R010534	Interruptor puerta	Door switch	2									
19	R010535	Placa separadora	Separating steel sheet	4									
20	Q032013	Tornillo alomado M-3x20	Curved screw M-3x20	4									
21	Q221350	Tuerca exagonal autoblocante M-3	Selflocking hexagonal nut M-3	4									
22	T323010	Motor chimenea	Chimney motor	1									
23				0									
24	Q162030	Tuerca exagonal M-5	Hexagonal nut M-5	2									
25	Q242030	Arandela abanico A-5	Fan shaped washer A-5	2									
26	Q232030	Arandela plana A-5	Flat washer A-5	2									
27	T325033	Escuadra amarre motor	Motor anchoring bracket	1									
28	Q152004	Tornillo aplastado M-5x13	Flat screw M-5x13	2									

N plano
C-1649



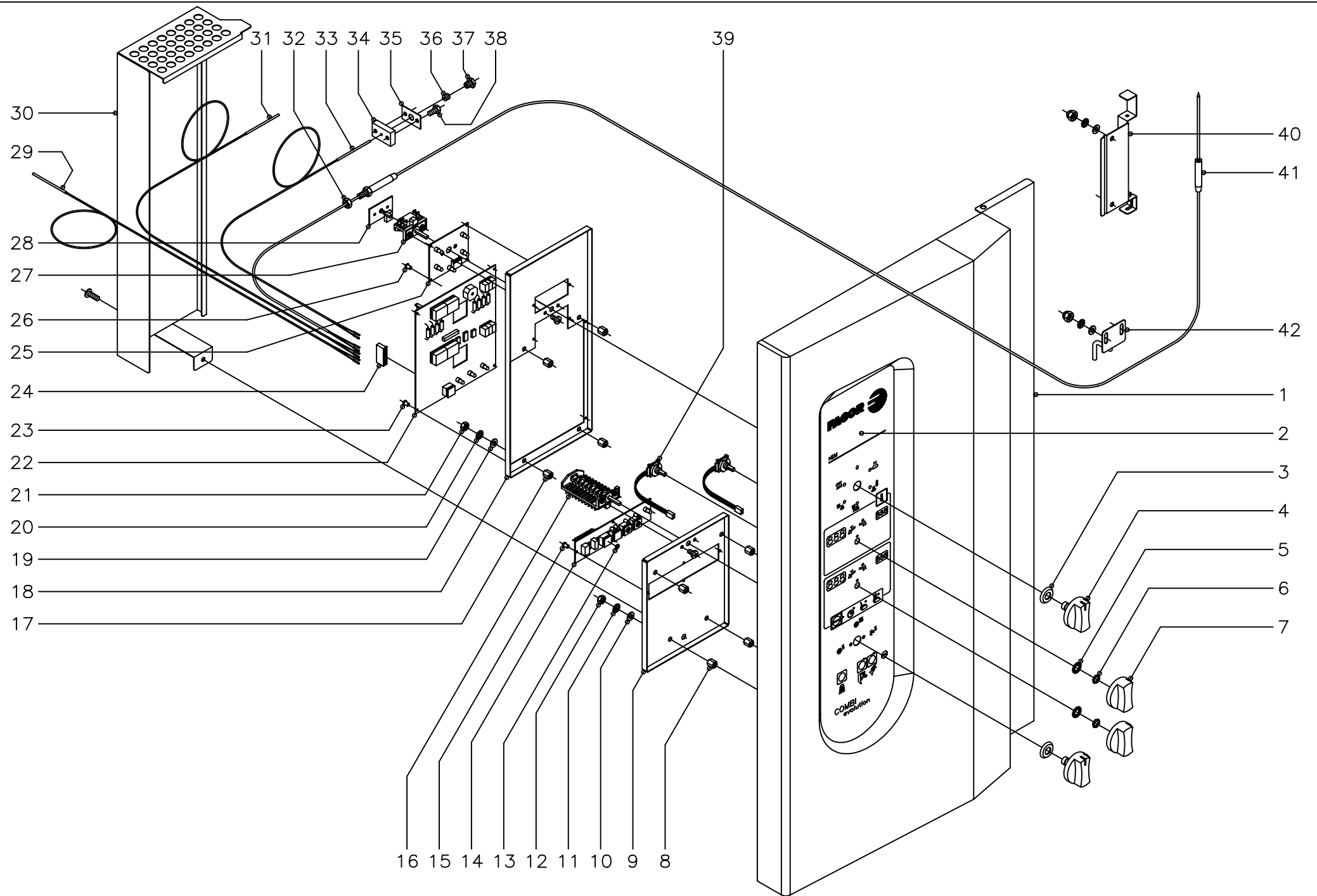
Fecha
5-2005

Aparato
HORNO ELECTRICO HEM-10/21

PARTE ELECTRICA PORTAMANDOS

Lamina
7

Fagor Industrial S. Coop.
OMITE
FAGOR



31 32 33 34 35 36 37 38 39

30
29
28
27
26
25
24
23
22
21
20
19
18
17

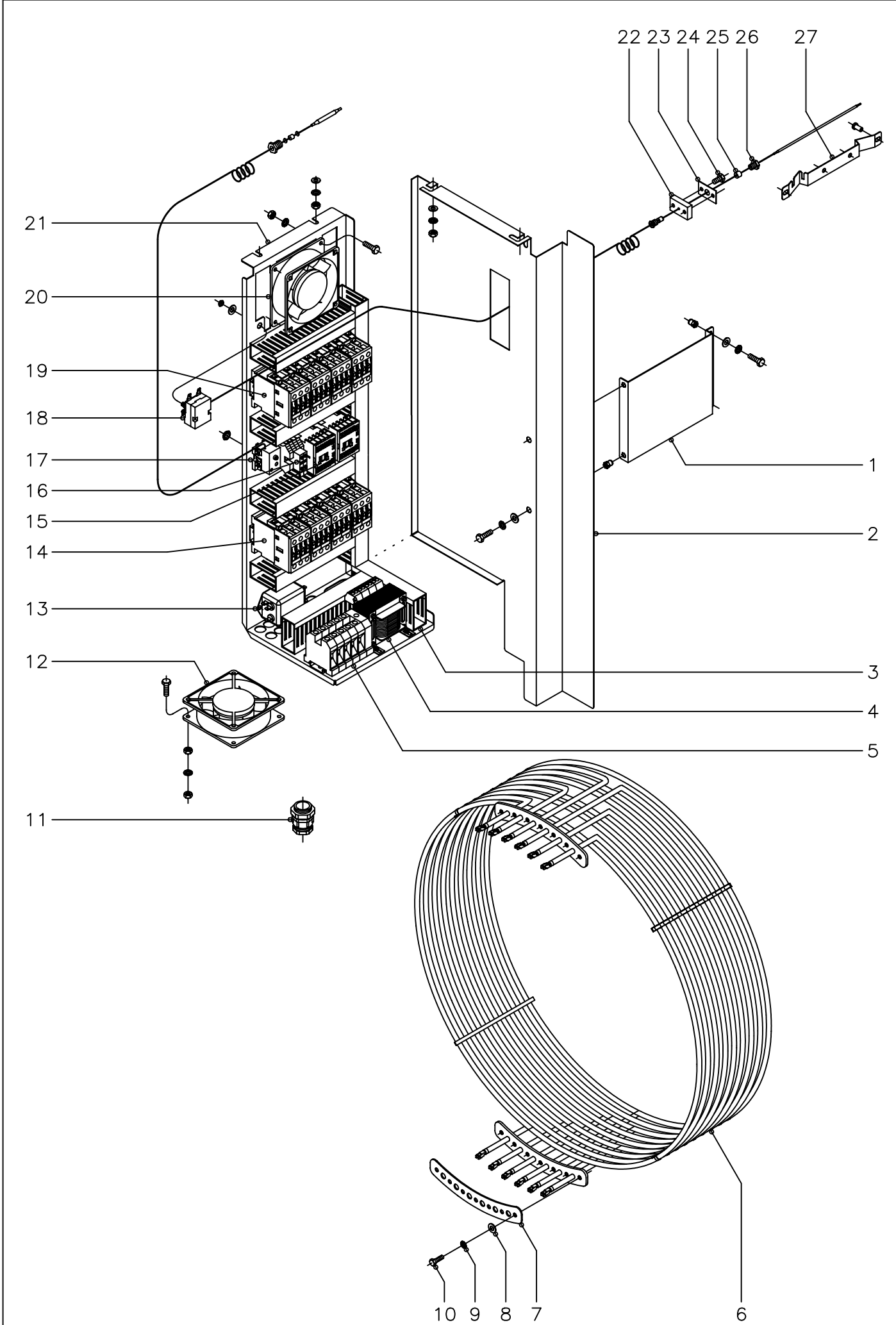
16 15 14 13 12 11 10 9 8

40
41
42
1
2
3
4
5
6
7

MOD.		HORNO ELECTRICO		ZONA	PARTE ELECTRICA PORTAMANDOS							PLANO	C-1649
ITEM	CODIGO	DENOMINACION	TEXTO	HEM-10/21									NOTAS
1	T322806	Panel portamandos	Control panel	1									
2	T323008	Serigrafia HEM-10 / 21	Serigraphy HEM-10 / 21	1									
3	R663046	Junta conmutador	Switch joint	2									
4	T303010	Boton de mando completo	Complete control button	2									
5	-	Arandela (viene con tuerca M-10)	Washer (comes with M-10 r	2									
6	Z953041	Tuerca exagonal M-10	Hexagonal nut M-10	2									
7	T303011	Boton de mando completo	Complete control button	2									
8	T302829	Distanciador componentes	Components spacer	4									
9	T303021	Soporte circuitos	Circuit holder	1									
10	Q232030	Arandela plana A-5	Flat washer A-5	4									
11	Q242030	Arandela abanico A-5	Fan shaped washer A-5	4									
12	Q163030	Tuerca exagonal M-5	Hexagonal nut M-5	4									
13	R663056	Bapipons autoadesivo	Self adhesive bupipons	3									
14	T303019	Circuito teclado	Key board circuit	1									
15	R663036	Fijacion circuito	Circuit bindings	4									
16	R663026	Conmutador de funciones	Function switch	1									
	Q151320	Tornillo alomado M-4x6	Curved screw M-4x6	2									
17	T302829	Distanciador componentes	Components spacer	4									
18	T302826	Soporte componentes	Components holder	1									
19	Q232030	Arandela plana A-5	Flat washer A-5	4									
20	Q242030	Arandela abanico A-5	Fan shaped washer A-5	4									
21	Q163030	Tuerca exagonal M-5	Hexagonal nut M-5	4									
22	T303005	Controlador	Controller	1									
23	R663036	Fijacion circuito	Circuit bindings	4									
24	T303045	Conector paso 3,96mm. 8 vias	Lead connector 3.96 mm 8	1									
25	T303018	Circuito de leds visualizador	Display leds circuit	1									
26	R663036	Fijacion circuito	Circuit bindings	4									
27	T303004	Conmutador acople potenciometro	Potentiometer coupling swit	1									
	Q151320	Tornillo alomado M-4x6	Curved screw M-4x6	2									

MOD.	HORNO ELECTRICO	ZONA	PARTE ELECTRICA PORTAMANDOS	PLANO	C-1649
------	-----------------	------	-----------------------------	-------	--------

ITEM	CODIGO	DENOMINACION	TEXTO	HEM-10/21										NOTAS
28	T303020	Circuito potenciometro	Potentiometer circuit	1										
29	T323024	Conjunto termopar vapor L=1600	Vapour thermocouple set G	1										Generador vapor
30	T303039	Proteccion circuitos	Circuit protection	1										
	Q152004	Tornillo aplastado M-5x13	Flat screw M-5x13	1										
31	T323024	Conjunto termopar vapor L=1600	Vapour thermocouple set G	1										Caja desague
32	Q162050	Tuerca exagonal M-8x1	Hexagonal nut M-8x1	1										
33	T323011	Conjunto termopar camara L=700	Chamber thermocouple set	1										Horno
34	T112625	Base cierre sonda (pasamuros)	Probe closing base (wire pr	1										
35	R692812	Junta pasamuros	Wire protection joint	1										
36	R662652	Bicono cierre sonda	Probe closing bicone	1										
37	R662629	Racord cierre sonda	Probe closing adaptor	1										
38	Q012021	Tornillo exagonal M-4x10	Hexagonal screw M-4x10	2										
39	T303022	Selector encoder	Encoder selector	2										
40	T302644	Soporte sonda	Probe holder	1										
	Q232030	Arandela plana A-5	Flat washer A-5	2										
	Q242030	Arandela abanico A-5	Fan shaped washer A-5	2										
	Q212031	Tuerca sombrerete M-5	Cowl nut M-5	2										
41	T303007	Conjunto sonda nucleo	Core probe set	1										
42	T302646	Tensor pincho completo	Complete spike tensor	1										
	Q232030	Arandela plana A-5	Flat washer A-5	2										
	Q242030	Arandela abanico A-5	Fan shaped washer A-5	2										
	Q212031	Tuerca sombrerete M-5	Cowl nut M-5	2										



N plano C-1650	Firma 	Fecha 5-2005	Aparato CUADRO ELECTRICO HORNO ELECTRICO HEM-10/21	Lamina 8	Fagor Industrial S.Coop. FAGOR  Onate
-------------------	--	-----------------	--	-------------	--

MOD.		HORNO ELECTRICO		ZONA	CUADRO ELECTRICO							PLANO	C-1650
ITEM	CODIGO	DENOMINACION	TEXTO	HEM-10/21									NOTAS
1	T303051	Soporte cierre cuadro electrico	Switchboard closing holder	1									
	Q012032	Tornillo exagonal M-5x15	Hexagonal screw M-5x15	2									
	Q242030	Arandela abanico A-5	Fan shaped washer A-5	2									
	Q302022	Arandela plana Ø16xØ6x1,2	Flat washer Ø16xØ6x1.2	2									
	Q221342	Remache exagonal M-5	Hexagonal rivet M-5	2									
2	T323003	Cierre cuadro electrico	Switchboard closing	1									
	Q012032	Tornillo exagonal M-5x15	Hexagonal screw M-5x15	2									Amarre cierre a soporte
	Q242030	Arandela abanico A-5	Fan shaped washer A-5	2									Amarre cierre a soporte
	Q302022	Arandela plana Ø16xØ6x1,2	Flat washer Ø16xØ6x1.2	2									Amarre cierre a soporte
	Q221342	Remache exagonal M-5	Hexagonal rivet M-5	2									Amarre cierre a soporte
	Q302022	Arandela plana Ø16xØ6x1,2	Flat washer Ø16xØ6x1.2	2									Amarre cierre a techo
	Q242030	Arandela abanico A-6	Fan shaped washer A-6	2									Amarre cierre a techo
	Q163040	Tuerca exagonal M-6	Hexagonal nut M-6	2									Amarre cierre a techo
3	3715520	Canaleta unex 30x60x150	Unex feed through 30x60x1	1									
	3715520	Canaleta unex 30x60x180	Unex feed through 30x60x1	5									
	3715520	Canaleta unex 30x60x510	Unex feed through 30x60x5	1									
	Q412002	Remache tubular Ø4x7,5	Tubular rivet Ø4x7.5	15									
4	R503005	Transformador	Transformer	1									
	Q032021	Tornillo alomado M-4x10	Curved screw M-4x10	4									
	Q242020	Arandela abanico A-4	Fan shaped washer A-4	4									
	Q162020	Tuerca exagonal M-4	Hexagonal nut M-4	4									
5	R263003	Borna paso 35 gris	connection paso 35 gris	3									
	R673010	Borna neutro 35 azul	Neutral terminal 35 blue	1									
	Z103035	Borna tierra 35 amarillo-verde	Earth terminal 35 yellow-green	1									
	Z683096	Tope final 35	End buffer 35	1									
	Z403016	Guia contactor L=100	Contactorm guide G=100	1									
6	T323000	Resistencia exterior 2500 W. X6	External resistor 2500 W.	1									
6	T323002	Resistencia interior 2500 W.X6	Internal resistor 2500 W.	1									
7	T323021	Junta resistencias	Resistor joint	4									

MOD.		HORNO ELECTRICO		ZONA	CUADRO ELECTRICO							PLANO	C-1650
ITEM	CODIGO	DENOMINACION	TEXTO	HEM-10/21									NOTAS
8	Q302022	Arandela plana Ø16xØ6x1,2	Flat washer Ø16xØ6x1.2	28									
9	Q242040	Arandela abanico A-6	Fan shaped washer A-6	28									
10	Q013042	Tornillo exagonal M-6x15 (laton)	Hexagonal screw M-6x15 (b	28									
11	R033002	Prensaestopas	Stuffing box	1									
12	Z103066	Ventilador 230V., 50/60 Hz.	Fan 230 V, 50/60 Hz	1									
	Q013023	Tornillo exagonal M-4x20	Hexagonal screw M-4x20	4									
	Q242020	Arandela abanico A-4	Fan shaped washer A-4	4									
	Q162020	Tuerca exagonal M-4	Hexagonal nut M-4	8									
13	T113023	Filtro de entrada	Inlet filter	1									
14	X183011	Contactador 3RT1024-1AN20	Contactador 3RT1024-1AN20	4									
	Z123019	Guia contactor L=175	Contactador guide G=175	1									
15	Z743009	Contactador sirius 3RT10, 16-2APO2	Sirius 3RT10, 16-2APO2 co	2									
16	R073005	Borna portafusible	Fuse carrier connection	2									
	P184011	Cartucho portafusible 4A.	Fuse holder cartridge 4A.	2									
	Z263303	Tope final 10	End buffer 10	2									
	Z103084	Guia contactor L=138	Contactador guide G=138	1									
	Q412002	Remache tubular Ø4x7,5	Tubular rivet Ø4x7.5	2									
17	Z953035	Termostato limitador aviso	Warning limiter thermostat	1									
	Z953041	Tuerca exagonal M-10x1	Hexagonal nut M-10x1	1									
18	T303009	Termostato limitador	Limiter thermostat	1									
	Q232050	Arandela plana A-8	Flat washer A-8	1									
	Q162050	Tuerca exagonal M-8	Hexagonal nut M-8	1									
19	X183011	Contactador 3RT1024-1AN20	Contactador 3RT1024-1AN20	4									
	Z123019	Guia contactor L=175	Contactador guide G=175	1									
20	Z103066	Ventilador 230V., 50/60 Hz.	Fan 230 V, 50/60 Hz	1									
	Q012021	Tornillo exagonal M-4x10	Hexagonal screw M-4x10	4									
	Q242020	Arandela abanico A-4	Fan shaped washer A-4	4									
	Q162020	Tuerca exagonal M-4	Hexagonal nut M-4	4									
21	T323004	Panel cuadro electrico	Switchboard panel	1									

MOD.	HORNO ELECTRICO			ZONA	CUADRO ELECTRICO						PLANO	C-1650
ITEM	CODIGO	DENOMINACION	TEXTO	HEM-10/21								NOTAS
	Q302022	Arandela plana Ø16xØ6x1,2	Flat washer Ø16xØ6x1.2	2								
	Q242030	Arandela abanico A-6	Fan shaped washer A-6	2								
	Q163040	Tuerca exagonal M-6	Hexagonal nut M-6	2								
22	T112625	Base cierre sonda (pasamuros)	Probe closing base (wire pr	1								
23	R692812	Junta pasamuros	Wire protection joint	1								
24	Q012021	Tornillo exagonal M-4x10	Hexagonal screw M-4x10	2								
25	R662662	Junta cierre bulbo limitador	Limiting bulb closing joint	1								
26	R662629	Racord cierre sonda	Probe closing adaptor	1								
27	R662683	Soporte bulbo limitador	Limiting bulb holder	1								
	Q412002	Remache tubular Ø4x7,5	Tubular rivet Ø4x7.5	3								

MOD.		HORNO ELECTRICO		ZONA		VARIOS						PLANO	
ITEM	CODIGO	DENOMINACION	TEXTO	HEM-10/21									NOTAS
	T326500	Manual de instrucciones	Instructions manual	1									Español
	T326501	Manual de instrucciones	Instructions manual	1									Aleman
	T326506	Manual de instrucciones	Instructions manual	1									Frances
	T326507	Manual de instrucciones	Instructions manual	1									Ingles
	T326508	Manual de instrucciones	Instructions manual	1									Italiano
	T323014	Esquema electrico adhesivo	Adhesive electrical diagram	1									Plano HC-76885
	T303042	Leyenda esquema electrico	Electrical diagram legend	1									Plano HC-76970
	T323020	Plano electrico de montaje	Assembly electrical diagram	1									Plano HD-12882
	T303053	Union contactores de inversion	Inversion contactors joint	1									
	T303030	Cableado control-potenciometro	Control-potentiometer wiring	1									
	T303031	Cableado luz interior	Inner light wiring	1									
	T303028	Cableado control circuito de leds	Leds circuit control wiring	1									
	T323019	Instalacion electrica HEM-10/21	Electrical installation HEM-10/21	1									
	T323016	Cableado resistencias camara	Chamber resistor wiring	1									
	T323018	Cableado fuerza	Force wiring	1									
	T323015	Instalacion doble potencia	Double power installation	1									
	T323017	Cableado resistencias vapor	Steam resistor wiring	1									

MOD.	HORNO ELECTRICO	ZONA	CAMBIOS PARA PASAR DE (380-415 V., 50Hz.) a (220 V., 60Hz.)	PLANO	C-1645 46 y 47
-------------	------------------------	-------------	--	--------------	---------------------------

ITEM	CODIGO	DENOMINACION	TEXTO	HEM-10/21														NOTAS	
		<u>PIEZAS A ELIMINAR</u>	<u>PARTS TO BE REMOVED</u>																
21	T323022	Motor de turbina 400 V.	Turbine motor 400 V	1															C-1646
38	Z220901	Bomba desague 30 W. (50Hz.)	Pump waste pipe 30 W (50	1															C-1647
	T326502	Etiqueta 380 - 415 V. 50 Hz.	Label 380 - 415 V 50 Hz	1															
	T302666	Reduccion cubreventilador 60 Hz.	Fan cover reduction 60 Hz	1															(C-1645) Entre piezas item.:13 y 17
21	T323023	Motor de turbina 230 V.	Turbine motor 230 V	1															C-1646
38	Z223501	Bomba desague 30 W. (60Hz.)	Pump waste pipe 30 W (60	1															C-1647
	T326505	Etiqueta 220 V. 60 Hz.	Label 220 V 60 Hz	1															

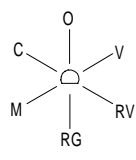
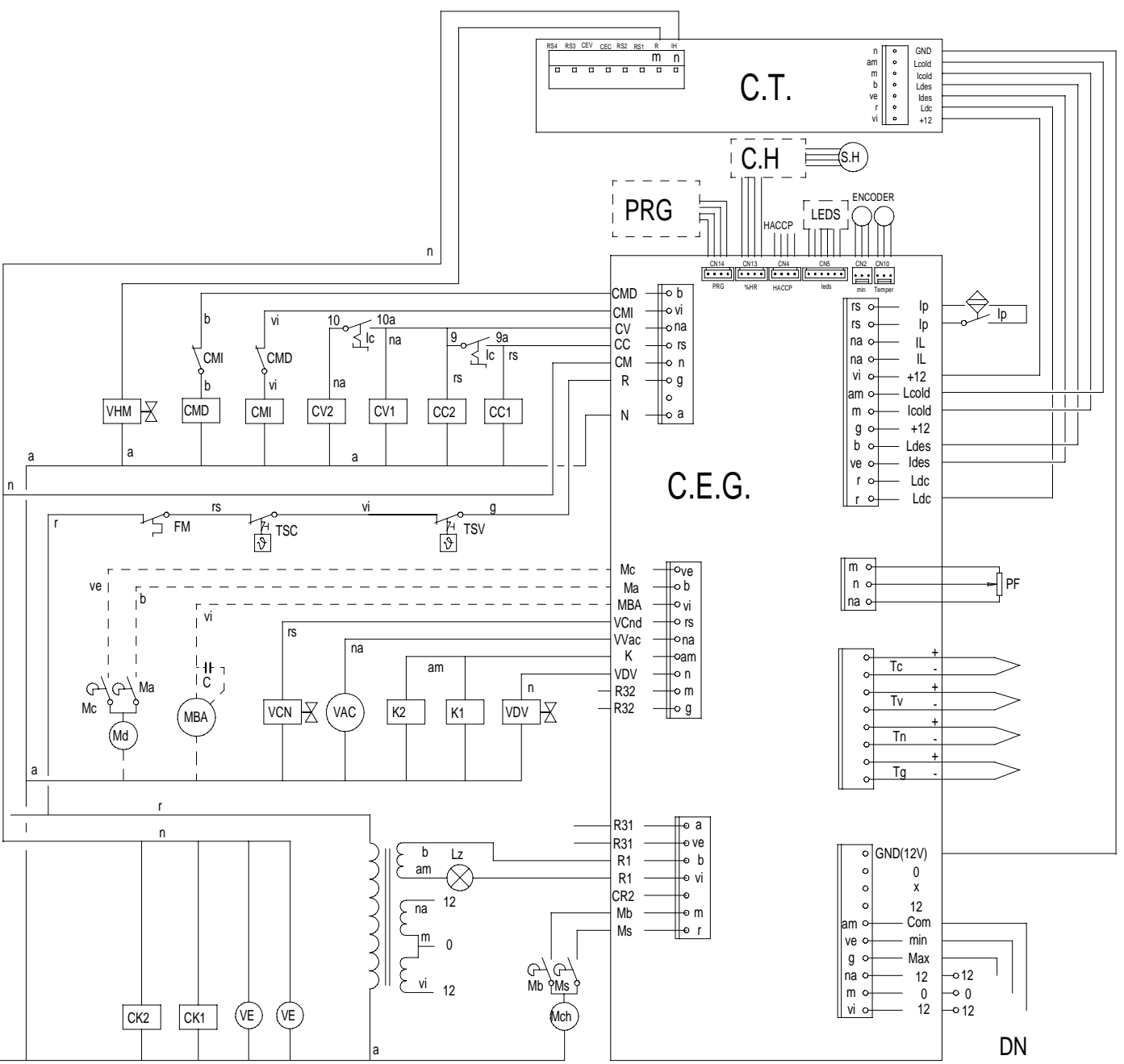
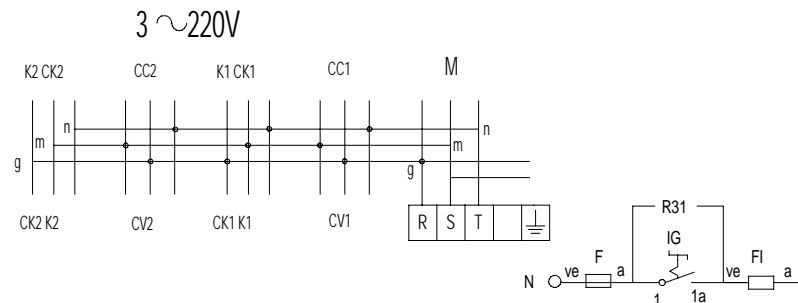
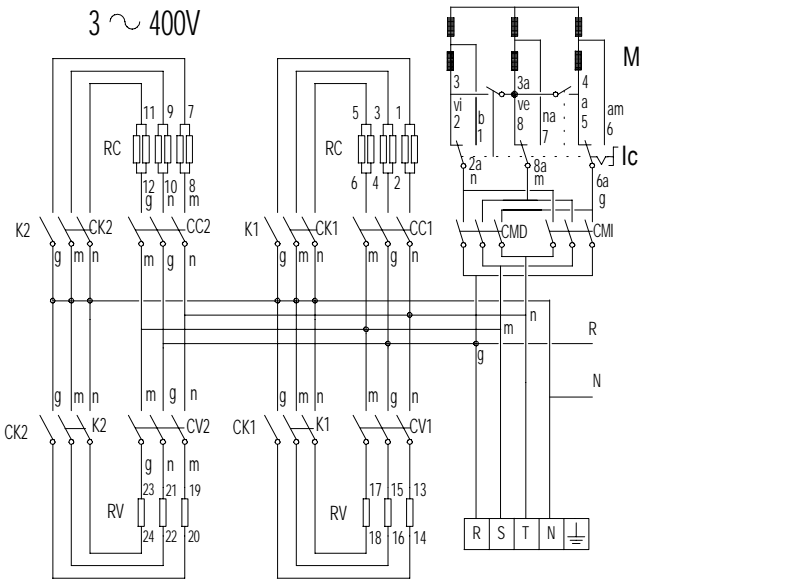
MOD.	HORNO ELECTRICO	ZONA	CAMBIOS PARA PASAR DE (380-415 V., 50Hz.) a (380-415 V., 60Hz.)	PLANO	C-1645 C-1647
------	-----------------	------	---	-------	------------------

ITEM	CODIGO	DENOMINACION	TEXTO	HEM-10/21												NOTAS	
		<u>PIEZAS A ELIMINAR</u>	<u>PARTS TO BE REMOVED</u>														
38	Z220901	Bomba desague 30 W. (50Hz.)	Pump waste pipe 30 W (50	1													C-1647
	T326502	Etiqueta 380 - 415 V. 50 Hz.	Label 380 - 415 V 50 Hz	1													
		<u>PIEZAS A INTRODUCIR</u>	<u>PARTS TO BE INCLUDED</u>														
	T302666	Reduccion cubreventilador 60 Hz.	Fan cover reduction 60 Hz	1													(C-1645) Entre piezas item.:13 y 17
38	Z223501	Bomba desague 30 W. (60Hz.)	Pump waste pipe 30 W (60	1													C-1647
	T326504	Etiqueta 380 - 415 V. 60 Hz.	Label 380 - 415 V 60 Hz	1													

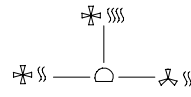
MOD.	HORNO ELECTRICO	ZONA	CAMBIOS A REALIZAR PARA LA VERSION VAUBAN	PLANO	C-1643
------	------------------------	------	--	-------	---------------

ITEM	CODIGO	DENOMINACION	TEXTO	HEM-10/21	VECM-10/21									NOTAS
		<u>PIEZAS A ELIMINAR</u>	<u>PARTS TO BE REMOVED</u>											
25	T323008	Serigrafia HEM-10 / 21	Serigraphy HEM-10 / 21	1	-									
	T326500	Manual de instrucciones	Instructions manual	1	-									Español
	T326501	Manual de instrucciones	Instructions manual	1	-									Aleman
	T326506	Manual de instrucciones	Instructions manual	1	-									Frances
	T326507	Manual de instrucciones	Instructions manual	1	-									Ingles
	T326508	Manual de instrucciones	Instructions manual	1	-									Italiano
		<u>PIEZAS A INTRODUCIR</u>	<u>PARTS TO BE INCLUDED</u>											
25	T323025	Serigrafia VAUBAN (VECM)	Serigraphy VAUBAN (VECM)	-	1									
	T326510	Manual de instrucciones (VECM)	Instructions manual (VECM)	-	1									

HEM 10/11 HEM 10/21
HEP 10/11 HEP 10/21



Modo	IG	
	1 1a	2 2a
OFF		
VAPOR	X	X
REG. VAPOR	X	X
REGENERAC.	X	X
MIXTO	X	X
CONVECCION	X	X

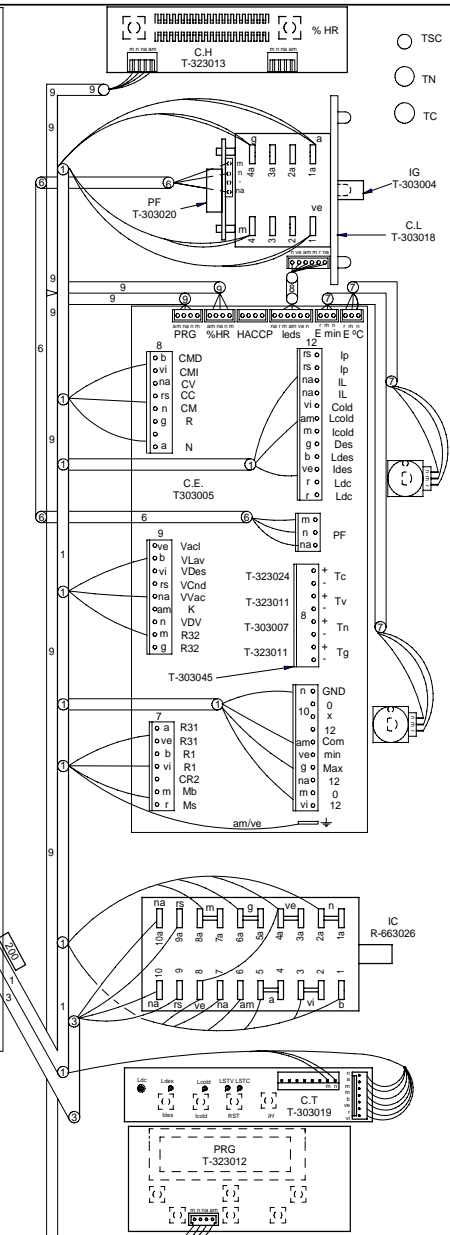
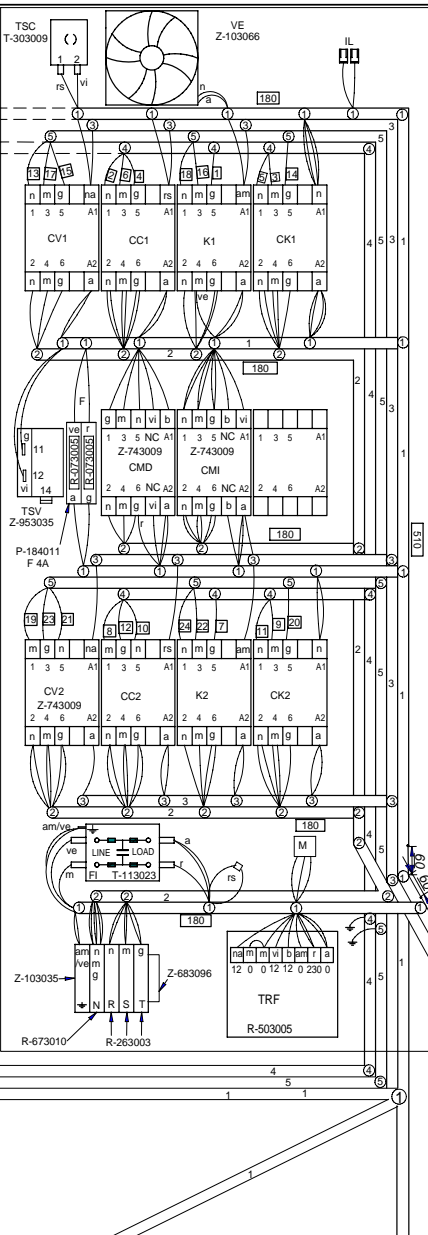
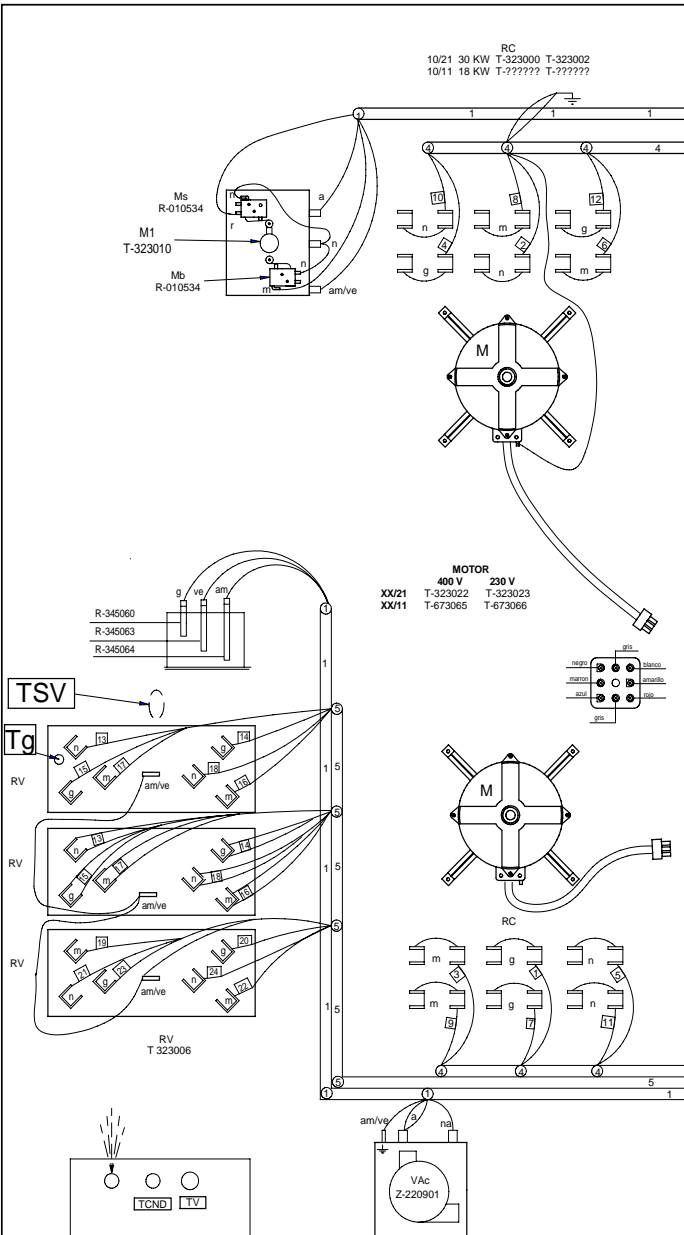


Ic	1	2	3	4	5	6	7	8	9	10
	1a	2a	3a	4a	5a	6a	7a	8a	9a	10a
SS	X		X	X		X	X			
SS	X		X	X		X	X		X	X
SS		X			X			X		

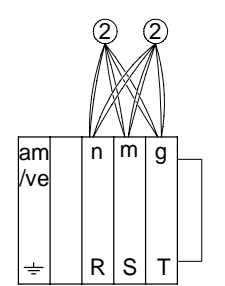
T323014000
HC-76885 -1

DN

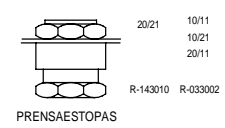
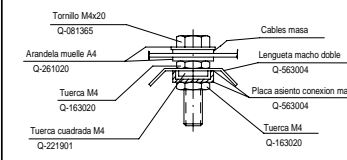
	ESPAÑOL	FRANÇAIS	ENGLISH	DEUTSCH	ITALIANO
BEC =	Bujía Encendido Cámara	Bougie Allumage Chambre	Chamber Spark Plug	Zündkerze Einschalten Garraum	Candela di Accensione Camera
BEV =	Bujía Encendido Caldera	Bougie Allumage Chaudière	Boiler Spark Plug	Zündkerze Einschalten Boile	Candela di Accensione Caldaia
C.E.C =	Control Combustión Cámara	Contrôle Combustion Chambre	Chamber Combustion Control	Steuerung Verbrennung Garraum	Controllo Combustione Camera
C.E.G =	Control Electronico General	Contrôle Electronique Général	Main Electronic Control	Steuerung Elektronik allgemein	Controllo Elettronico Generale
C.E.V =	Control Combustión Caldera	Contrôle Combustion Chaudière	Boiler Combustion Control	Steuerung Verbrennung Boiler	Controllo Combustione Caldaia
C.H =	Circuito Humedad	Circuit Humidité	Humidity Circuit	Kreislauf Feuchtigkeit	Circuito Umidità
C.L =	Circuito Leds	Circuit LEDs	Led Circuit	Kreislauf LEDs	Circuito Leds
C.T =	Circuito Teclado	Circuit Clavier	Keypad Circuit	Kreislauf Tastatur	Cicuito Tastiera
CC1,CC2 =	Contacto Resistencia Cámara	Contacteur Élément Chauffant Chambre	Chamber Heating Element Contactor	Schutz Heizwiderstand Garraum	Contattore Resistenza Camera
CMD =	Contacto Motor Derecha	Contacteur Moteur Droite	Right Engine Contactor	Schutz Motor rechts	Contattore Motore Destra
CMI =	Contacto Motor Izquierda	Contacteur Moteur Gauche	Left Engine Contactor	Schutz Motor links	Contattore Motore Sinistra
CR2 =	Rele Arranque	Relais Démarrage	Starting Relay	Relais Anlauf	Rele Accensione
CV1, CV2 =	Contacto Resistencias Caldera	Contacteur Élément Chauffant Chaudière	Boiler Heating Element Contactor	Schutz Heizwiderstand Boiler	Contattore Resistenza Caldaia
DEC =	Detector Llama Cámara	Détecteur Flamme Chambre	Chamber Flame Detector	Flammendetektor Garraum	Rilevatore di Fiamma Camera
DEV =	Detector Llama Caldera	Détecteur Flamme Chaudière	Boiler Flame Detector	Flammendetektor Boiler	Rilevatore di Fiamma Caldaia
DN =	Detector Nivel Caldera	Détecteur Niveau Chaudière	Boiler Level Detector	Pegeldetektor Boiler	Rilevatore Livello Caldaia
EM =	Encoder Selector Tiempo	Encodeur Sélecteur Temps	Time Selector Encoder	Encoder Zeitwahlschalter	Encoder Selettore Tempo
E°C =	Encoder Selector Temperatura	Encodeur Sélecteur Température	Temperature Selector Encoder	Encoder Temperaturwahlschalter	Encoder Selettore Temperatura
F =	Fusibles	Fusibles	Fuses	Sicherungen	Fusibili
FI =	Filtro Interferencias	Filtre Interférences	Interference Filter	Störungsfilter	Filtro Interferenze
FM =	Térmico Motor	Thermique Moteur	Thermal Engine	Thermoschalter Motor	Termico Motore
GV1, GV2 =	Electro válvula Gas Cámara	Électrovanne Gaz Chambre	Chamber Gas Solenoid Valve	Elektroventil Gas Garraum	Elettrovalvola Gas Camera
GV3, GV4 =	Electro válvula Gas Caldera	Électrovanne Gaz Chaudière	Boiler Gas Solenoid Valve	Elektroventil Gas Boiler	Elettrovalvola Gas Caldaia
IC =	Selector Velocidad Potencia	Sélecteur Vitesse Puissance	Power Speed Selector	Wahlschalter Geschwindigkeit Leistung	Selettore Velocità Potenza
IG =	Interruptor General	Interrupteur Général	Main Switch	Hauptschalter	Interruttore generale
IL =	Interruptor Seguridad Lavado	Interrupteur Sécurité Lavage	Washing Safety Switch	Sicherheitsschalter Waschen	Interruttore Sicurezza Lavaggio
Ip =	Interruptor Seguridad Puerta	Interrupteur Sécurité Porte	Door Safety Switch	Sicherheitsschalter Tür	Interruttore Sicurezza Porta
K1,K2,CK1,CK2=	Rele Resistencia	Relais Élément Chauffant	Heating Element Relay	Relais Heizwiderstand	Rele Resistenza
Lz =	Luz Interior	Éclairage Intérieur	Inner Light	Innenbeleuchtung	Luce Interna
M, M1, M2 =	Motor Turbina	Moteur Turbine	Turbine Engine	Motor Turbine	Motore Turbina
Mch =	Motor Chimenea	Moteur Cheminée	Stack Engine	Motor Abluftkamin	Motore Canna
Md =	Motor Válvula	Moteur vanne	Valve Engine	Motor Ventil	Motore Valvola
MBA =	Bomba Lavado	Pompe Lavage	Washing Pump	Waschenpumpe	Pompa lavaggio
Mb =	Interruptor Micro Bajada	Microrupteur Descente	Drop Microswitch	Mikroschalter Senken	Interruttore Micro Discesa
Ms =	Interruptor Micro Subida	Microrupteur Montée	Rise Microswitch	Mikroschalter Heben	Interruttore Micro Salita
PF =	Potenciómetro Selector Funciones	Potentiomètre Sélecteur Fonctions	Functions Selector Potentiometer	Potentiometer Funktionswahlschalter	Potenzimetro Selettore Funzioni
PRG =	Programador	Programateur	Programmer	Programmiervorrichtung	Programmatore
RC =	Resistencias Cámara	Éléments Chauffants Chambre	Chamber Heating Element	Heizwiderstände Garraum	Resistenze Camere
RV =	Resistencias Caldera	Éléments Chauffants Chaudière	Boiler Heating Element	Heizwiderstände Boiler	Resistenze Caldaia
Tc =	Sonda Cámara	Sonde Chambre	Chamber Probe	Sonde Garraum	Sonda Camera
TCN =	Termostato Condensación	Thermostat Condensation	Condensation Thermostat	Thermostat Kondensierung	Termostato Condensazione
Tg =	Sonda Caldera	Sonde Chaudière	Boiler Probe	Sonde Boiler	Sonda Caldaia
TH =	Sonda Humedad	Sonde Humidité	Humidity Probe	Sonde Feuchtigkeit	Sonda Umidità
Tn =	Sonda Núcleo	Sonde Noyau	Core Probe	Kerntemperaturmesssonde	Sonda Nucleo
TRF =	Transformador	Transformateur	Transformer	Transformator	Trasformatore
TSC =	Termostato Seguridad Cámara	Thermostat Sécurité Chambre	Chamber Safety Thermostat	Sicherheitsthermostat Garraum	Termostato Sicurezza Camera
TSV =	Termostato Seguridad Caldera	Thermostat Sécurité Chaudière	Boiler Safety Thermostat	Sicherheitsthermostat Boiler	Termostato Sicurezza Caldaia
Tv =	Sonda Vapor	Sonde Vapeur	Steam Probe	Sonde Dampf	Sonda Vapore
VAC =	Bomba Vaciado	Pompe Vidange	Vacuum Pump	Ablasspumpe	Pompa scarico
VAcL =	Electro válvula Aclarado	Électrovanne Rinçage	Rinsing Solenoid Valve	Elektroventil Klarspülen	Elettrovalvola Risciacquo
VC =	Ventilador Soplante	Ventilateur Soufflant	Blowing Fan	Ventilator Gebläse	Ventilatore Soffiante
VCN =	Electro válvula Condensación	Électrovanne Condensation	Condensation Solenoid Valve	Elektroventil Kondensierung	Elettrovalvola Condensazione
VDV =	Electro válvula Llenado Caldera	Électrovanne Remplissage Chaudière	Chamber Filling Solenoid Valve	Elektroventil Füllung Boiler	Elettrovalvola di Riempimento Caldaia
VE =	Ventilador Cuadro Eléctrico	Ventilateur Tableau Électrique	Fan Switchboard	Ventilator Elektrotafel	Ventilatore Quadro Elettrico
VHM =	Electro válvula Humidificador	Électrovanne Humidificateur	Humidifier Solenoid Valve	Elektroventil Befeuchtungsrichtung	Elettrovalvola Umidificatore
VLav =	Electro válvula Lavado	Électrovanne Lavage	Washing Solenoid Valve	Elektroventil Waschen	Elettrovalvola Lavaggio
Vv =	Variador Velocidad	Variateur Vitesse	Speed Variator	Geschwindigkeitsregler	Variatore di Velocità
COLOR	COLORES	COULEURS	COLOUR	FARBEN	COLORE
Va =	Azul	Bleu	Blue	Blau	Blu
am =	Amarillo	Jaune	Yellow	Gelb	Giallo
am/ve =	Amarillo/verde	Jaune / vert	Yellow / green	Gelb/grün	Giallo/verde
b =	Blanco	Blanc	White	Weiß	Bianco
g =	Gris	Gris	Grey	Grau	Grigio
m =	Marrón	Marron	Brown	Braun	Marrone
n =	Negro	Noir	Black	Schwarz	Nero
na =	Naranja	Orange	Orange	Orange	Arancio
r =	Rojo	Rouge	Red	Rot	Rosso
rs =	Rosa	Rose	Pink	Rosa	Roseo
ve =	Verde	Vert	Green	Grün	Verde
vi =	Violeta	Violet	Purple	Violett	Viola



3 ~ 220 V



- 1 T-323019
 - 2 T-323018
 - 3 T-323015
 - 4 T-323016
 - 5 T-323017
 - 6 T-303030
 - 7 T-303022
 - 8 T-303028
 - 9 T-303029
 - 10 T-303031
- Esquema teorico T-323014
Leyenda T-303042
Indicador comp. T-303043
CC1, CC2, CV1, X-183011
K1, K2, CK1, CK2, X-183011



Plano Montaje HEM 380V				T323020000	
Zk/Nº	Pieza	Cant.	Material/Material	Klas. zk/Nº Clas.	Gainazal akabera/Tratamiento
Zk/Nº	Aldaketa/Modificaciones		Nork proposatua/Propuesta de	Data/Fecha	Perdoi orokorrak Tolerancias generales
					< 5 ± [0,2]
					50 ± 100 ± [0,8]
					5 ± 25 ± [0,4]
					> 100 ± [1]
					25 ± 50 ± [0,8]
					α ± [1]
Marratua/Dibujaua			Sinadura/Firma	Data/Fecha	Gainazal perdoia
Proiektatua/Proyektado			M.Mallo	12-02-2003	Mecanizado superficial
Egiaztatua/Comprobado			M.Mallo	12-02-2003	
Eskala/Escala					
HORNOS					Plano Zk./Plano Nº HD-12882
					Zk. ord. du
					Zk.galitik ord.

FAGOR
Fagor Industrial, Koop. Elik., Mugatua

Plano hau ezin dateke erabili, ez berriztatu, gure baimenik gabe.