

**Hornos Mixtos
Fours Mixtes
Combi Ovens
HeiBluftdämpfer
Forno Misti**

SERIE "EVOLUTION"

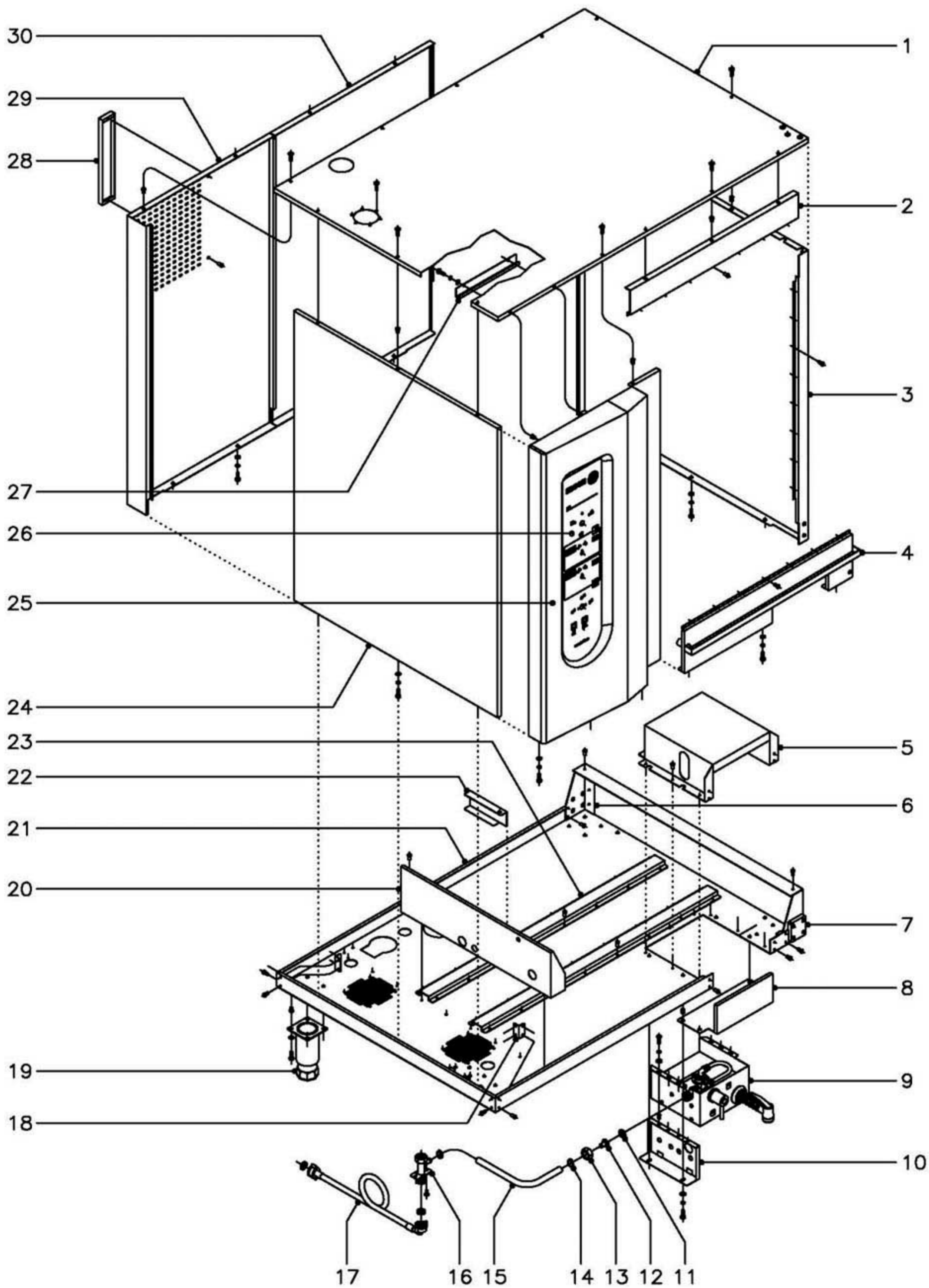
Modelos:

HEI-10/21

April 2005 April

FAGOR 

Fagor Industrial



N plano
C-1635

Firma

Fecha
4-2005

Aparato
MUEBLE
HORNO ELECTRICO HEI-10/21

Lamina
1

Fagor Industrial S.Coop. **FAGOR**
Onate

MOD.	HORNO ELECTRICO	ZONA	MUEBLE	PLANO	C-1635
------	-----------------	------	--------	-------	--------

ITEM	CODIGO	DENOMINACION	TEXTO	HEI-10/21									NOTAS
1	T352802	Panel superior exterior	Outer upper panel	1									
	Q221342	Remache exagonal M-5	Hexagonal rivet M-5	13									
	Q152004	Tornillo aplastado M-5x13	Flat screw M-5x13	13									
2	T302804	Panel anterior superior	Upper front panel	1									
	Q412002	Remache tubular Ø4x7,5	Tubular rivet Ø4x7.5	7									Amarre a cuba
3	T302803	Panel exterior derecho	Right outer panel	1									
	Q012042	Tornillo exagonal M-6x15	Hexagonal screw M-6x15	3									Amarre inferior
	Q262040	Arandela grower A-6	Grower washer A-6	3									Amarre inferior
	Q232040	Arandela plana A-6	Flat washer A-6	3									Amarre inferior
	Q221343	Remache exagonal M-6	Hexagonal rivet M-6	3									Amarre inferior
	Q412002	Remache tubular Ø4x7,5	Tubular rivet Ø4x7.5	7									Amarre a cuba
4	T302848	Recogeaguas completo	Complete water collector	1									
	Q012042	Tornillo exagonal M-6x15	Hexagonal screw M-6x15	3									Amarre inferior
	Q262040	Arandela grower A-6	Grower washer A-6	3									Amarre inferior
	Q232040	Arandela plana A-6	Flat washer A-6	3									Amarre inferior
	Q221343	Remache exagonal M-6	Hexagonal rivet M-6	3									Amarre inferior
	Q412002	Remache tubular Ø4x7,5	Tubular rivet Ø4x7.5	7									Amarre a cuba
5	T302830	Alojamiento ducha	Shower housing	1									
	Q412002	Remache tubular Ø4x7,5	Tubular rivet Ø4x7.5	13									Amarre a base
6	T302816	Refuerzo apoyo base posterior	Rear base reinforcement	1									
	Q412002	Remache tubular Ø4x7,5	Tubular rivet Ø4x7.5	6									Amarre a base
7	T302836	Refuerzo apoyo base anterior com.	Com. front base holder rein	1									
	Q412002	Remache tubular Ø4x7,5	Tubular rivet Ø4x7.5	6									Amarre a base
8	T342805	Cubierta de ducha	Shower cover	1									
	Q012042	Tornillo exagonal M-6x15	Hexagonal screw M-6x15	3									Amarre a base
	Q262040	Arandela grower A-6	Grower washer A-6	3									Amarre a base
	Q232040	Arandela plana A-6	Flat washer A-6	3									Amarre a base
	Q221343	Remache exagonal M-6	Hexagonal rivet M-6	3									Amarre a base

MOD.

HORNO ELECTRICO

ZONA

MUEBLE

PLANO

C-1635

ITEM	CODIGO	DENOMINACION	TEXTO	HEI-10/21									NOTAS
	1100002860	KIT DUCHA HORNO 10 / 21	OVEN SHOWER KIT 10 / 21	1									Bajo pedido
9	Z279506	Grupo ducha mini	Mini shower group	1									Componente kit
	Q152004	Tornillo aplastado M-5x13	Flat screw M-5x13	6									Componente kit
	Q262030	Arandela grower A-5	Grower washer A-5	6									Componente kit
	Q232030	Arandela plana A-5	Flat washer A-5	6									Componente kit
	Q221342	Remache exagonal M-5	Hexagonal rivet M-5	6									Componente kit
10	T302831	Amarre ducha	Shower anchoring	2									Componente kit
	Q012042	Tornillo exagonal M-6x15	Hexagonal screw M-6x15	3									Componente kit
	Q262040	Arandela grower A-6	Grower washer A-6	3									Componente kit
	Q232040	Arandela plana A-6	Flat washer A-6	3									Componente kit
	Q221343	Remache exagonal M-6	Hexagonal rivet M-6	3									Componente kit
11	Q306039	Arandela junta Ø25xØ16,1x1,5	Joint washer Ø25xØ16.1x1.5	1									Componente kit
12	T305067	Entrada de agua a ducha	Shower water inlet	1									Componente kit
13	Q222013	Tuerca 3/4" gas	Nut 3/4" Gas	1									Componente kit
14	Q881302	Abrazadera 12 - 20	Clamp 12 - 20	2									Componente kit
15	3676900	Tubo de goma Ø17xØ10x850	Rubber tubing Ø17xØ10x850	1									Componente kit
16	T345012	Suplemento electrovalvula	Solenoid valve supplement	1									Componente kit
	Q032021	Tornillo alomado M-4x10	Curved screw M-4x10	2									Componente kit
17	Z601114	Manguera entrada de agua	Water inlet hose	1									
	Z701132	Filtro-junta entrada de agua	Filter-joint water inlet	1									
	Q307031	Junta manguera Ø24xØ14x3	Hose joint Ø24xØ14x3	1									
18	T302837	Cantonera base	Base corner protector	2									
	Q412002	Remache tubular Ø4x7,5	Tubular rivet Ø4x7.5	8									Amarre a base
19	X260151	Pata regulable	Ajustable leg	4									
	Q012031	Tornillo exagonal M-5x10	Hexagonal screw M-5x10	16									
	Q242030	Arandela abanico A-5	Fan shaped washer A-5	16									
	Q221342	Remache exagonal M-5	Hexagonal rivet M-5	16									
20	T322808	Apoyo cuerpo de horno	Oven body holder	1									

MOD.		HORNO ELECTRICO		ZONA	MUEBLE								PLANO	C-1635
ITEM	CODIGO	DENOMINACION	TEXTO	HEI-10/21									NOTAS	
	Q412002	Remache tubular Ø4x7,5	Tubular rivet Ø4x7.5	13									Amarre a base	
21	T322801	Base exterior de horno 10 / 21	Oven outer base 10 / 21	1										
22	T352803	Apoyo desague	Waste pipe support	1										
23	T302818	Refuerzo longitudinal base	Base longitudinal reinforcen	2										
	Q412002	Remache tubular Ø4x7,5	Tubular rivet Ø4x7.5	32									Amarre a base	
24	T302806	Panel exterior izquierdo	Left outer panel	1										
	Q012042	Tornillo exagonal M-6x15	Hexagonal screw M-6x15	3									Amarre inferior	
	Q262040	Arandela grower A-6	Grower washer A-6	3									Amarre inferior	
	Q232040	Arandela plana A-6	Flat washer A-6	3									Amarre inferior	
	Q221343	Remache exagonal M-6	Hexagonal rivet M-6	3									Amarre inferior	
25	T322806	Panel portamandos	Control panel	1										
	Q012042	Tornillo exagonal M-6x15	Hexagonal screw M-6x15	3									Amarre inferior	
	Q262040	Arandela grower A-6	Grower washer A-6	3									Amarre inferior	
	Q232040	Arandela plana A-6	Flat washer A-6	3									Amarre inferior	
	Q221343	Remache exagonal M-6	Hexagonal rivet M-6	3									Amarre inferior	
	Q412002	Remache tubular Ø4x7,5	Tubular rivet Ø4x7.5	8									Amarre a cuba	
26	T353004	Serigrafia HEI-10 / 21	Serigraphy HEI-10 / 21	1										
27	T302834	Canaleta portamandos	Control feed through	1										
	Q012042	Tornillo exagonal M-6x15	Hexagonal screw M-6x15	2										
	Q262040	Arandela grower A-6	Grower washer A-6	2										
	Q232040	Arandela plana A-6	Flat washer A-6	2										
	Q221343	Remache exagonal M-6	Hexagonal rivet M-6	2										
28	T302835	Separador posterior	Rear separator	1										
	Q412002	Remache tubular Ø4x7,5	Tubular rivet Ø4x7.5	2										
29	T322811	Panel posterior exterior elec.	Electrical outer rear panel	1										
30	T302850	Panel posterior exterior comun	Common outer rear panel	1										
	Q012042	Tornillo exagonal M-6x15	Hexagonal screw M-6x15	4									Amarre inferior	
	Q262040	Arandela grower A-6	Grower washer A-6	4									Amarre inferior	
	Q232040	Arandela plana A-6	Flat washer A-6	4									Amarre inferior	

MOD.

HORNO ELECTRICO

ZONA

MUEBLE

PLANO

C-1635

ITEM

CODIGO

DENOMINACION

TEXTO

HEI-10/21

NOTAS

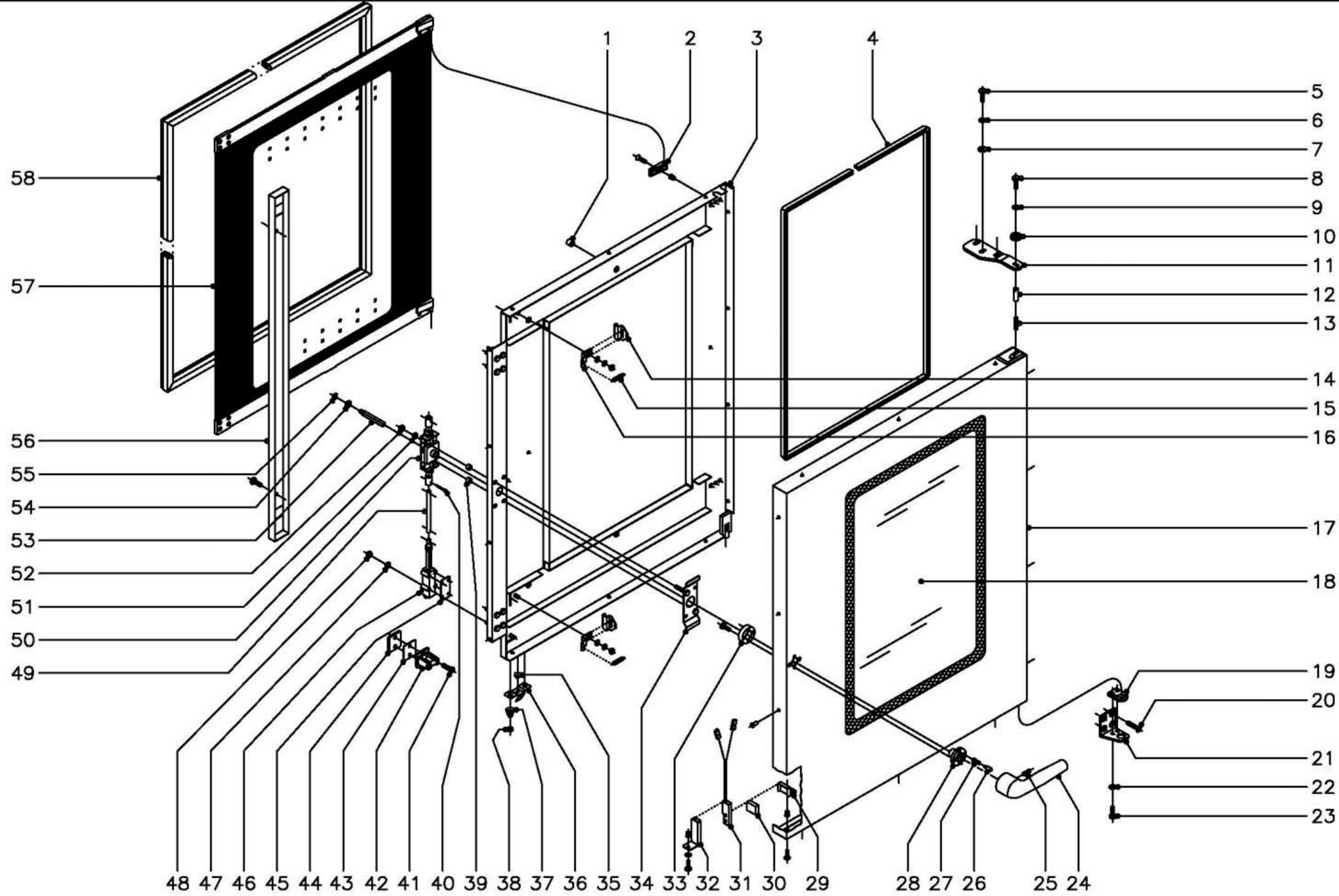
Q221343

Remache exagonal M-6

Hexagonal rivet M-6

4

Amarre inferior



N plano C-1636	Firma 	Fecha 4-2005	Aparato PUERTA HORNO ELECTRICO HEI-10/21	Lamina 2	Fagor Industrial S.Coop. FAGOR Orote
-------------------	-----------	-----------------	--	-------------	--

MOD.

HORNO ELECTRICO

ZONA

PUERTA

PLANO

C-1636

ITEM	CODIGO	DENOMINACION	TEXTO	HEI-10/21															NOTAS
	1100003101	KIT Puerta completa 10/21	Complete door KIT 10/21	1															
1	T300513	Tope cristal interior	Inner glass door stop	6															
2	R670615	Base de bisagra	Hinge base	2															
	Q042032	Tornillo avellanado M-5x15	Countersunk screw M-5x15	2															
	Q222011	Remache exagonal M-5	Hexagonal rivet M-5	2															
3	T300501	Contrapuerta completa	Complete inner door	1															
4	3715200	Junta cristal L=2500	Glass joint L=2500	1															
5	Q012053	Tornillo exagonal M-8x20	Hexagonal screw M-8x20	3															
6	Q242050	Arandela abanico A-8	Fan shaped washer A-8	3															
7	Q302025	Arandela plana Ø8,4x20x1,5	Flat washer Ø8,4x20x1.5	3															
8	Q012042	Tornillo exagonal M-6x15	Hexagonal screw M-6x15	1															
9	Q242040	Arandela abanico A-6	Fan shaped washer A-6	1															
10	R662807	Arandela amarre puerta	Door anchoring washer	1															
11	T300520	Bisagra superior	Upper hinge	1															
12	R660534	Eje superior	Upper shaft	1															
13	Z850519	Resorte	Spring	1															
14	T300514	Pestillo sujecion cristal interior	Inner glass fastening latch	2															
15	R660605	Muelle tensor pestillo	Latch tensor spring	2															
16	R670612	Base de pestillo	Latch base	2															
	Q302022	Arandela plana Ø16xØ6x1,2	Flat washer Ø16xØ6x1.2	2															
	Q242030	Arandela abanico A-5	Fan shaped washer A-5	2															
	Q162030	Tuerca exagonal M-5	Hexagonal nut M-5	2															
17	T300523	Panel puerta completa	Complete door panel	1															
	Q412002	Remache tubular Ø4x7,5	Tubular rivet Ø4x7.5	14															
18	T300505	Cristal exterior	Outer glass	1															
19	R660549	Guia eje inferior	Lower shaft guide	1															
20	Q062040	Tornillo avellanado M-6x16	Countersunk screw M-6x16	4															
21	T300521	Bisagra inferior	Lower hinge	1															

MOD.

HORNO ELECTRICO

ZONA

PUERTA

PLANO

C-1636

ITEM	CODIGO	DENOMINACION	TEXTO	HEI-10/21															NOTAS
22	Q242040	Arandela abanico A-6	Fan shaped washer A-6	2															
23	Q012041	Tornillo exagonal M-6x10	Hexagonal screw M-6x10	2															
24	T130502	Manilla	Handle	1															
25	Q132042	Varilla roscada M-6x15	Threaded rod M-6x15	1															
26	T130507	Piton enganche	Fastener spike	2															
27	T130506	Resorte	Spring	2															
28	T130515	Guia manilla	Handle guide	1															
29	T300525	Soporte iman	Magnet holder	1															
30	T300526	Iman	Magnet	1															
31	Z100522	Interruptor magnetico	Magnetic switch	1															
32	T302819	Soporte interruptor magnet. puerta	Door magnetic switch holde	1															
	Q221342	Remache exagonal M-5	Hexagonal rivet M-5	1															
	Q242030	Arandela abanico A-5	Fan shaped washer A-5	1															
	Q152004	Tornillo aplastado M-5x13	Flat screw M-5x13	1															
33	T130514	Soporte resortes	Spring holder	1															
	Q032032	Tornillo alomado M-5x15	Curved screw M-5x15	2															
34	T130511	Suplemento fijacion cerradura	Lock fixing supplement	1															
35	T300518	Tapon cierre canaleta	Feed through closing plug	1															
36	T300517	Chapa cierre canaleta	Feed through closing cover	1															
37	T300524	Resorte conico	Conical spring	2															
38	Q162030	Tuerca exagonal M-5	Hexagonal nut M-5	2															
39	Z608410	Casquillo	Bushing	2															
40	Q352001	Pasador de aletas Ø2x15	Cotter pin Ø2x15	4															
41	Q042045	Tornillo avellanado M-6x30	Countersunk screw M-6x30	4															
42	T110506	Enganche	Fastener	2															
43	R660538	Calzo de enganche	Coupling chock	4															
44	T300519	Suplemento enganche	Fastener supplement	2															
45	T080503	Suplemento elemento cierre	Closing element supplemen	6															
46	T080504	Elemento de cierre	Closing component	2															

MOD.

HORNO ELECTRICO

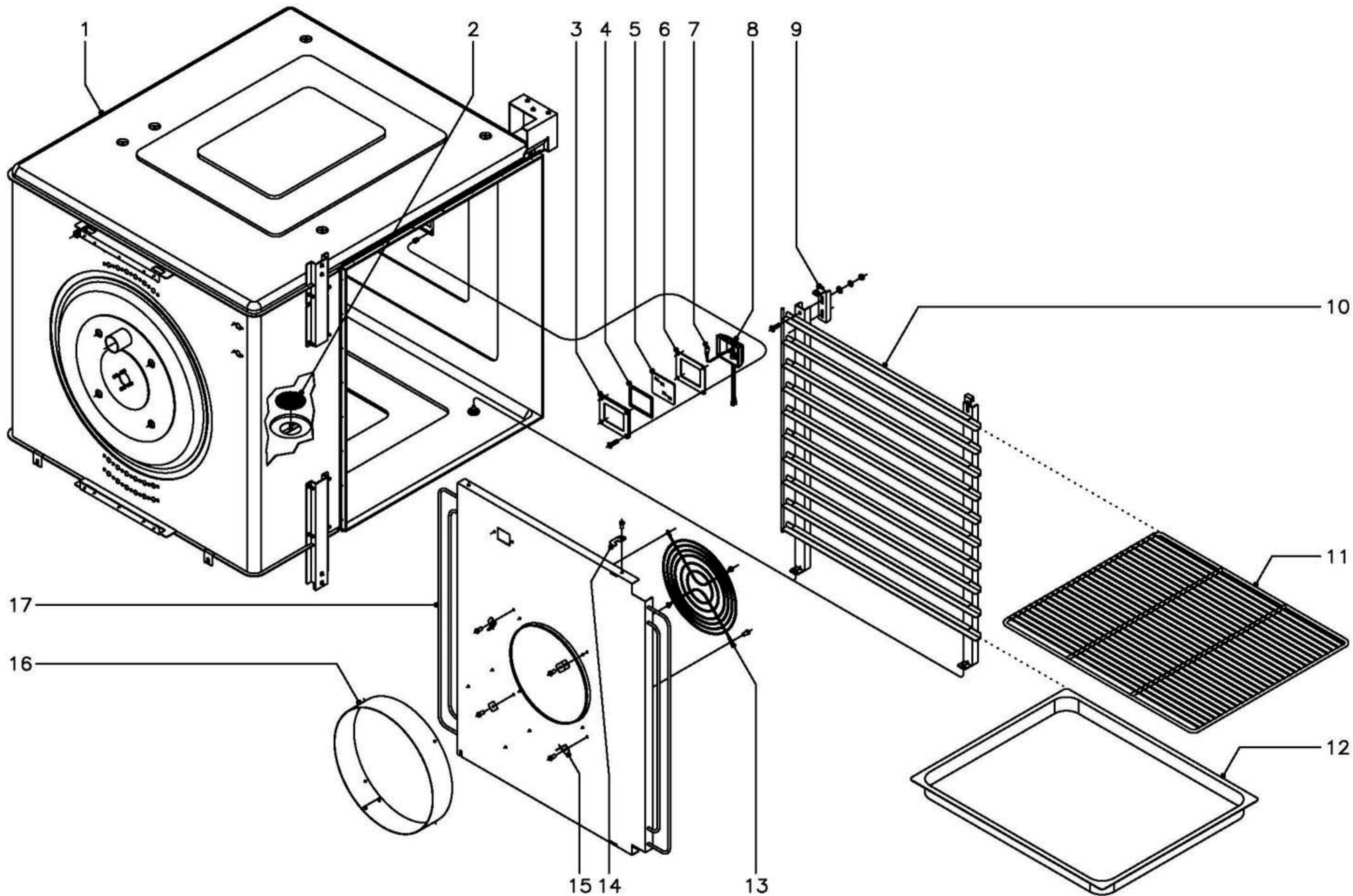
ZONA

PUERTA

PLANO

C-1636

ITEM	CODIGO	DENOMINACION	TEXTO	HEI-10/21									NOTAS
47	Q242030	Arandela abanico A-5	Fan shaped washer A-5	8									
48	Q162030	Tuerca exagonal M-5	Hexagonal nut M-5	8									
49	T300507	Tubo alargadera	Extension tubing	2									
50	T130509	Mecanismo de cierre	Closing mechanism	1									
51	Q262040	Arandela muelle A-6	Spring washer A-6	2									
52	Q162040	Tuerca exagonal M-6	Hexagonal nut M-6	2									
53	T130508	Eje de manilla	Handle shaft	1									
54	T130505	Casquillo	Bushing	1									
55	Q271033	Arandela de seguridad Ø6	Safety washer Ø6	1									
56	T300508	Tapa cierre puerta	Door closing cover	1									
	Q032031	Tornillo alomado M-5x10	Curved screw M-5x10	2									
57	1100003102	KIT Cristal interior compl. 10/21	Complete inner glass 1100	1									
58	T300500	Junta puerta	Door joint	1									



N plano C-1637	Firma 	Fecha 4-2005	Aparato MUEBLE INTERIOR HORNO ELECTRICO HEI-10/21	Lamina 3	Fagor Industrial S.Coop. FAGOR Ofata
-------------------	-----------	-----------------	---	-------------	--

MOD.

HORNO ELECTRICO

ZONA

MUEBLE INTERIOR

PLANO

C-1637

ITEM	CODIGO	DENOMINACION	TEXTO	HEI-10/21															NOTAS
1	T352600	Cuerpo interior completo	Complete inner body	1															
2	T302625	Filtro desague completo	Complete waste pipe filter	1															
3	T303047	Pletina amarre lampara	Lamp anchoring platen	1															
	Q042022	Tornillo avellanado M-4x15	Countersunk screw M-4x15	4															
	Q222041	Remache exagonal M-4	Hexagonal rivet M-4	4															
4	T303027	Junta interior lampara	Lamp inner joint	1															
5	T303025	Cristal lampara	Lamp glass	1															
6	T303026	Junta exterior lampara	Lamp outer joint	1															
7	R663013	Lampara 10 W., 12 V.	Lamp 10 W, 12 V	1															
8	T303023	Portalamparas	Lamp holder	1															
9	T302660	Suplemento guias	Guide supplement	2															
	Q152004	Tornillo aplastado M-5x13	Flat screw M-5x13	4															
	Q302022	Arandela plana Ø16xØ6x1,2	Flat washer Ø16xØ6x1.2	4															
	Q242030	Arandela abanico A-5	Fan shaped washer A-5	4															
	Q162030	Tuerca exagonal M-5	Hexagonal nut M-5	4															
10	T302620	Conjunto guias derecho	Right guide set	1															
s/n	T302624	Conjunto guias izquierdo	Left guide set	1															
11	R682676	Parrilla de horno G.N.-2/1	Oven grill G.N.-2/1	1															
12	R032605	Bandeja de horno G.N.-2/1, h=40	Oven tray G.N.-2/1, h=40	1															
13	R662661	Proteccion de turbina	Turbine protection	1															
	Q412002	Remache tubular Ø4x7,5	Tubular rivet Ø4x7.5	4															
14	T302635	Enganche cubreventilador	Fan cover fastener	2															
	Q412002	Remache tubular Ø4x7,5	Tubular rivet Ø4x7.5	2															
15	T302643	Fijacion suplemento cubreventilad.	Fan cover suplement bindin	4															
	Q412002	Remache tubular Ø4x7,5	Tubular rivet Ø4x7.5	4															
16	T322603	Suplemento cubreventilador	Fan cover supplement	1															
	Q412002	Remache tubular Ø4x7,5	Tubular rivet Ø4x7.5	4															
17	T352604	Cubreventilador completo	Complete fan cover	1															

MOD.

HORNO ELECTRICO

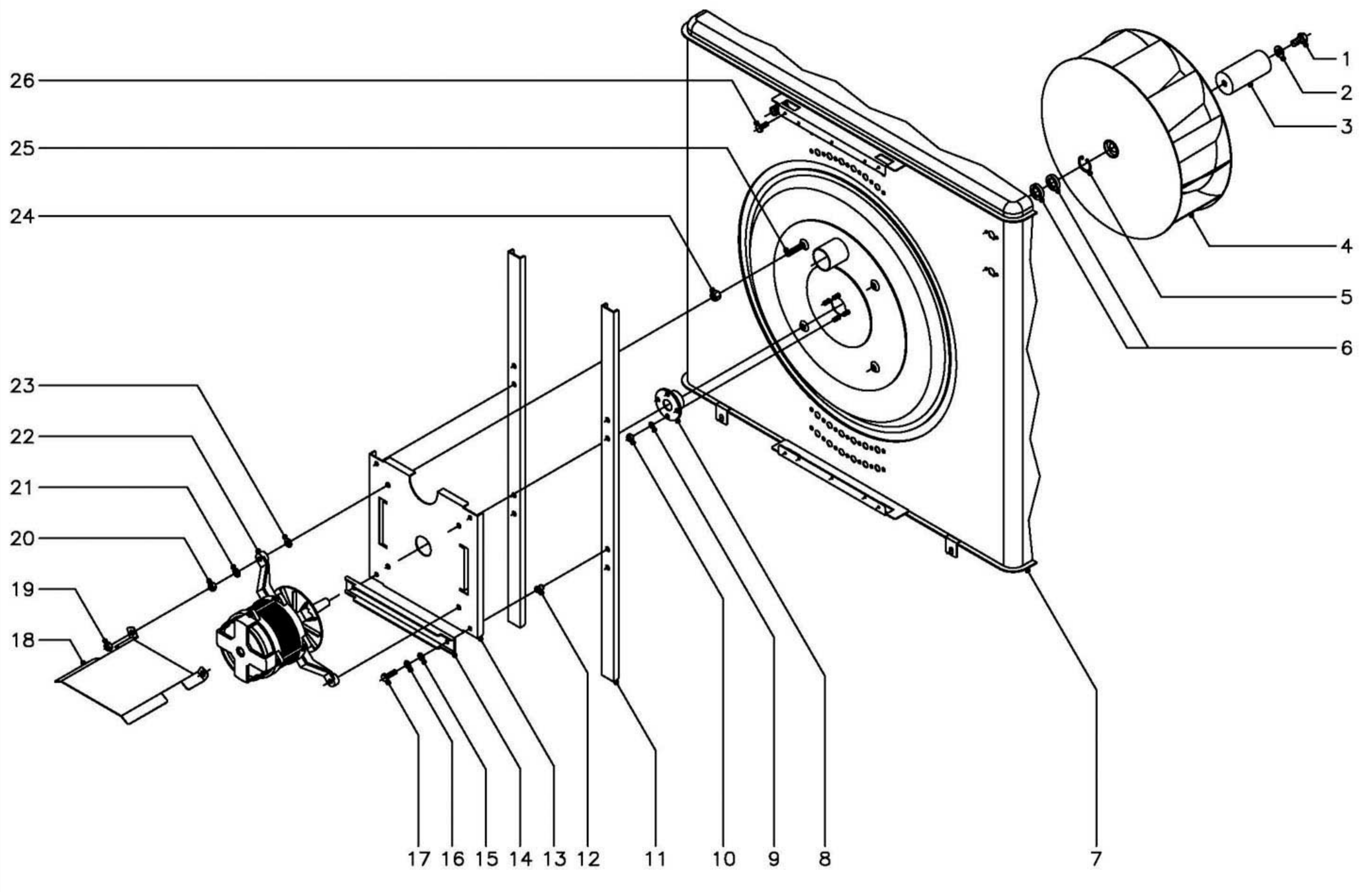
ZONA

MUEBLE INTERIOR

PLANO

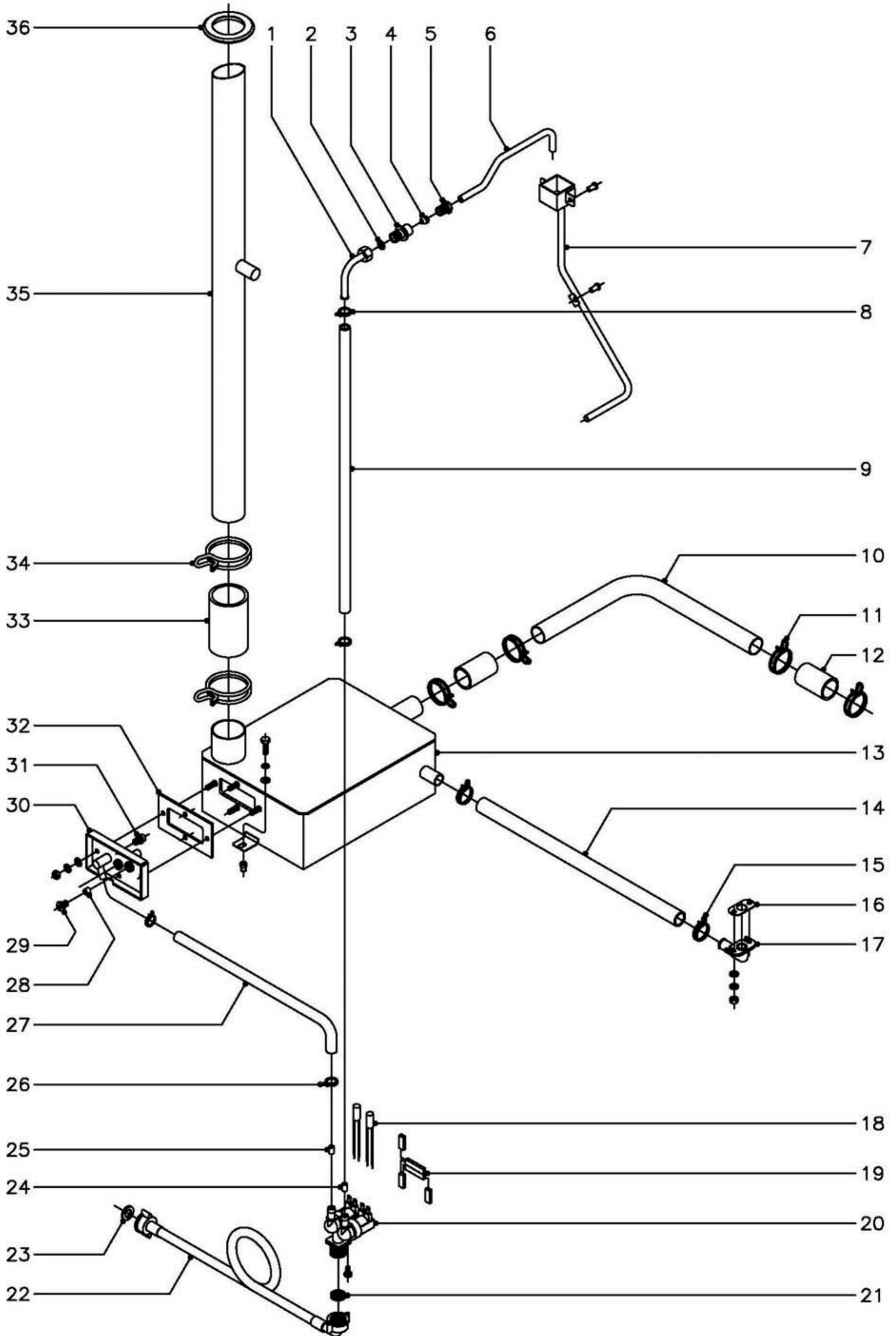
C-1637

ITEM	CODIGO	DENOMINACION	TEXTO	HEI-10/21									NOTAS
	T302650	Aislante techo 970x850x20	Roof insulator 970x850x20	3									Vitrofib
	T302650	Aislante base 970x850x20	Base insulator 970x850x20	1									Vitrofib
	T302651	Aislante lateral decho. 890x850x20	Right side insulator 890x850	2									Vitrofib
	T302653	Aislante lateral izdo. 1230x900x10	Left side insulator 1230x900	1									Filtro con alumi.
	T302654	Aislante lat. Izdo.inferi. 860x160x10	Side insulator Lower left 860	1									Filtro con alumi.
	T302659	Aislante izdo. motor 265x265x10	Motor left insulator 265x265	1									Filtro con alumi.
	T302652	Aislante posterior 970x880x20	Rear insulator 970x880x20	2									Vitrofib
	T302658	Aislante frontal vertical 1000x30x10	Front vertical insulator 1000	1									Filtro con alumi.
	T322604	Aislante portamand. 1000x120x20	Control insulator 1000x120x	1									Filtro con alumi.
	T302667	Arandela sujecion aislante	Insulator fixing washer	13									
	Q221026	Clip sujecion rapida D-4	Quick fastening clip D-4	13									



N plano C-1638	Firma 	Fecha 4-2005	Aparato TURBINA HORNO ELECTRICO HEI-10/21	Lamina 4	Fagor Industrial S.Coop. FAGOR
-------------------	-----------	-----------------	---	-------------	---------------------------------------

MOD.		HORNO ELECTRICO		ZONA	TURBINA						PLANO	C-1638
ITEM	CODIGO	DENOMINACION	TEXTO	HEI-10/21								NOTAS
1	Q012063	Tornillo exagonal M-10x20	Hexagonal screw M-10x20	1								
2	R763010	Arandela seguridad Hanning	Hanning safety washer	1								
3	R665025	Distribuidor inyeccion	Injection distributor	1								
4	T303015	Turbina	Turbine	1								
5	Q302023	Anillo de seguridad Ø 28x1,2	Safety ring Ø 28x1.2	1								
6	R662627	Reten Ø 28xØ 17x7	Retainer Ø 28xØ 17x7	2								
7	-	Costado izquierdo de horno	Left side of oven	1								
8	T302629	Casquillo reten	Bushing retainer	1								
9	Q262040	Arandela grower A-6	Grower washer A-6	4								
10	Q162040	Tuerca exagonal M-6	Hexagonal nut M-6	4								
11	T302628	Perfil soporte motor	Motor holder profile	2								
12	Q221342	Remache exagonal M-5	Hexagonal rivet M-5	4								
13	T302627	Soporte motor	Motor holder	1								
14	T302649	Refuerzo motor	Motor reinforcement	2								
15	Q232030	Arandela plana A-5	Flat washer A-5	4								
16	Q242030	Arandela abanico A-5	Fan shaped washer A-5	4								
17	Q012032	Tornillo exagonal M-5x15	Hexagonal screw M-5x15	4								
18	T302665	Tejadillo motor	Motor roof	1								
19	Q162050	Tuerca exagonal M-8	Hexagonal nut M-8	2								
20	Q162050	Tuerca exagonal M-8	Hexagonal nut M-8	4								
21	Q242050	Arandela abanico A-8	Fan shaped washer A-8	4								
22	T323022	Motor de turbina	Turbine motor	1								
23	Q232050	Arandela plana A-8	Flat washer A-8	4								
24	T302638	Distanciador motor	Motor spacer	4								
25	Q012056	Tornillo exagonal M-8x40	Hexagonal screw M-8x40	4								
26	Q012031	Tornillo exagonal M-5x10	Hexagonal screw M-5x10	4								



MOD.

HORNO ELECTRICO

ZONA

CIRCUITO DE AGUA

PLANO

C-1639

ITEM	CODIGO	DENOMINACION	TEXTO	HEI-10/21														NOTAS
1	R695017	Tube conduction agua completo	Complete water conduction	1														
2	Q306026	Arandela junta Ø14xØ8,5x1,5	Seal washer Ø14xØ8.5x1.5	1														
3	-	Casquillo soldado a cuerpo horno	Bushing welded onto oven b	1														
4	R695004	Bicono	Bicone	1														
5	R695003	Manguito cierre	Closing sleeve	1														
6	T355001	Conduccion inyector	Conduccion inyector	1														
7	T355005	Inyector completo	Complete injector	1														
	Q412002	Remache tubular Ø4x7.5	Tubular rivet Ø4x7.5	3														
8	Q901310	Abrazadera elastica Ø16,8 - 17,7	Elastic clamp Ø16.8 - 17.7	2														
9	3676900	Tube goma negra Ø17xØ10x1000	Black rubber tubing Ø17xØ10	1														
10	T325017	Conducto desagüe horno	Oven drain conduct	1														
11	Q901307	Abrazadera elastica Ø37,7 - 39,7	Elastic clamp Ø26.7 - 39.7	4														
12	3714100	Tube silicona Ø38xØ31x60	Silicone tubing Ø38xØ31x60	2														
13	T325013	Caja desagüe completa	Complete drainage box	1														
	Q012042	Tornillo exagonal M-6x15	Hexagonal screw M-6x15	2														
	Q232040	Arandela plana A-6	Flat washer A-6	2														
	Q262040	Arandela grower A-6	Grower washer A-6	2														
	Q162040	Tuerca exagonal M-6	Hexagonal nut M-6	2														
14	3715600	Tube recogeaguas Ø26xØ18x600	Water recovery tubing Ø26x	1														
15	Q901311	Abrazadera elastica Ø26,7 - 28,1	Elastic clamp Ø26.7 - 28.1	2														
16	T302845	Junta recogeaguas	Water collector joint	1														
17	T302844	Desague recogeaguas	Water collection waste pipe	1														
	Q232030	Arandela plana A-5	Flat washer A-5	2														
	Q242030	Arandela abanico A-5	Fan shaped washer A-5	2														
	Q162030	Tuerca exagonal M-5	Hexagonal nut M-5	2														
18	Z233012	Condensador antiparasitario	Antiparasistic condensor	2														
19	T323027	PTC Electrovalvula 5"	PTC Solenoide valve 5"	1														
20	P255001	Electrovalvula doble	Double solenoide valve	1														
	Q153021	Tornillo alomado M-4x10	Curved screw M-4x10	2														

MOD.

HORNO ELECTRICO

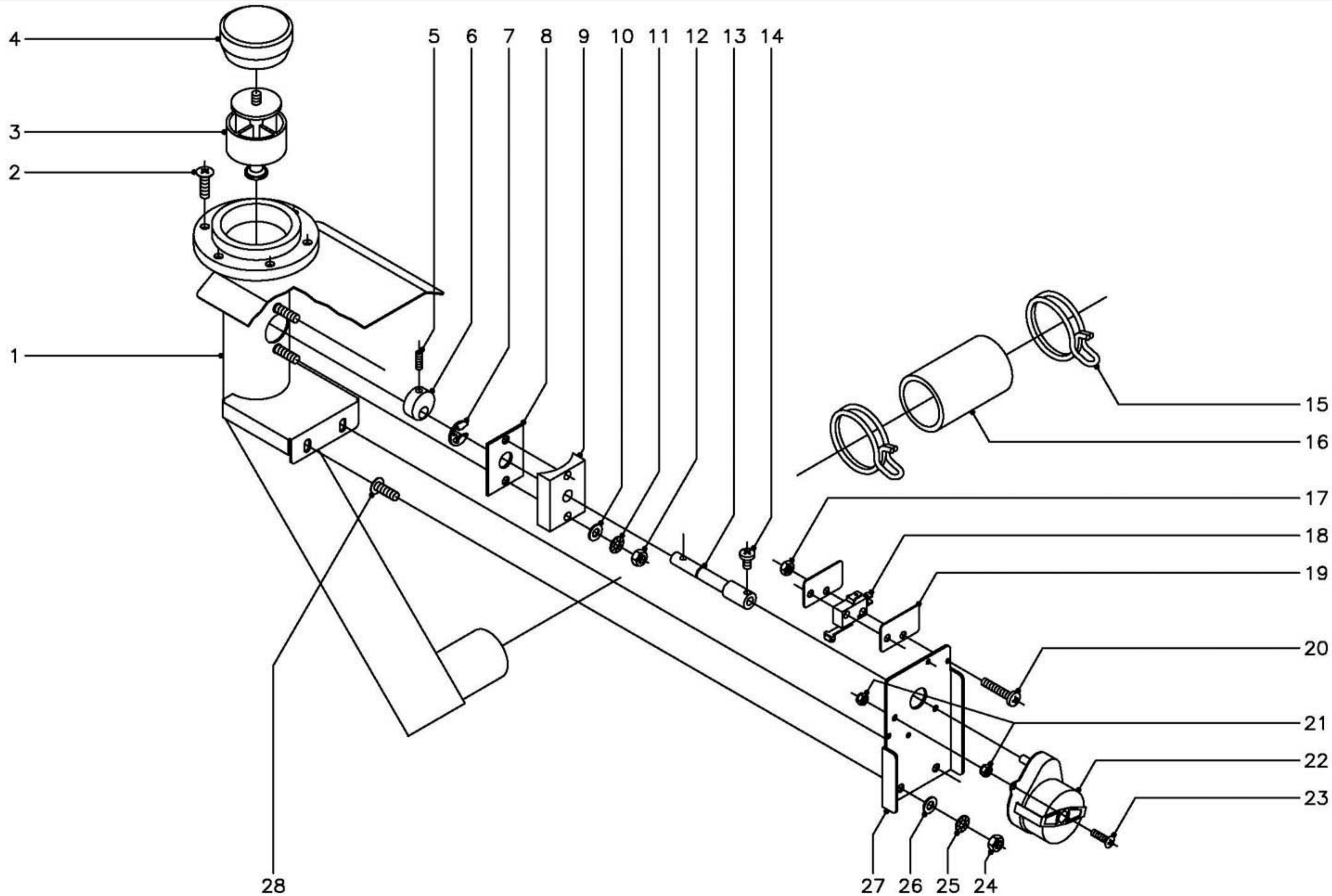
ZONA

CIRCUITO DE AGUA

PLANO

C-1639

ITEM	CODIGO	DENOMINACION	TEXTO	HEI-10/21															NOTAS
21	Z701132	Filtro-junta entrada de agua	Filter-joint water inlet	1															
22	Z601114	Manguera entrada de agua	Water inlet hose	1															
23	Q307031	Junta manguera Ø24xØ14x3	Hose joint Ø24xØ14x3	1															
24	R715011	Regulador caudal 0,5 l./min. (naranja)	Flow regulator 0.5 l/min (orange)	1															
25	P443042	Regulador caudal 3 l./min. (negro)	Flow regulator 3 l/min (black)	1															
26	Q901310	Abrazadera elastica Ø16,8 - 17,7	Elastic clamp Ø16.8 - 17.7	2															
27	3676900	Tubo goma negra Ø17xØ10x700	Black rubber tubing Ø17xØ10x700	1															
28	3712400	Tubo-junta de silicona Ø8xØ3x20	Silicone tubing-joint Ø8xØ3x20	1															
29	R662629	Racord cierre sonda	Probe closing adaptor	1															
30	T325065	Fijacion sonda completa	Complete probe clamping	1															
	Q232030	Arandela plana A-5	Flat washer A-5	4															
	Q242030	Arandela abanico A-5	Fan shaped washer A-5	4															
	Q162030	Tuerca exagonal M-5	Hexagonal nut M-5	4															
31	T115086	Tobera R. 1/8" (Ø1,5)	Nozzle R. 1/8" (Ø1.5)	1															
32	T325066	Junta fijacion sonda	Probe clamping joint	1															
33	R345020	Tubo empalme generador	Generator coupling tubing	1															
34	Q901313	Abrazadera elastica 62 - 66	Elastic clamp 62 - 66	2															
35	T325050	Chimenea completa	Complete chimney	1															
36	R662813	Pasamuros chimenea	Wire protection Chimney	1															



N plano C-1640	Firma 	Fecha 4-2005	Aparato CIERRE CHIMENEA HORNO ELECTRICO HEI-10/21	Lamina 6	Fagor Industrial S.Coop. FAGOR Ofate
-------------------	-----------	-----------------	---	-------------	--

MOD.

HORNO ELECTRICO

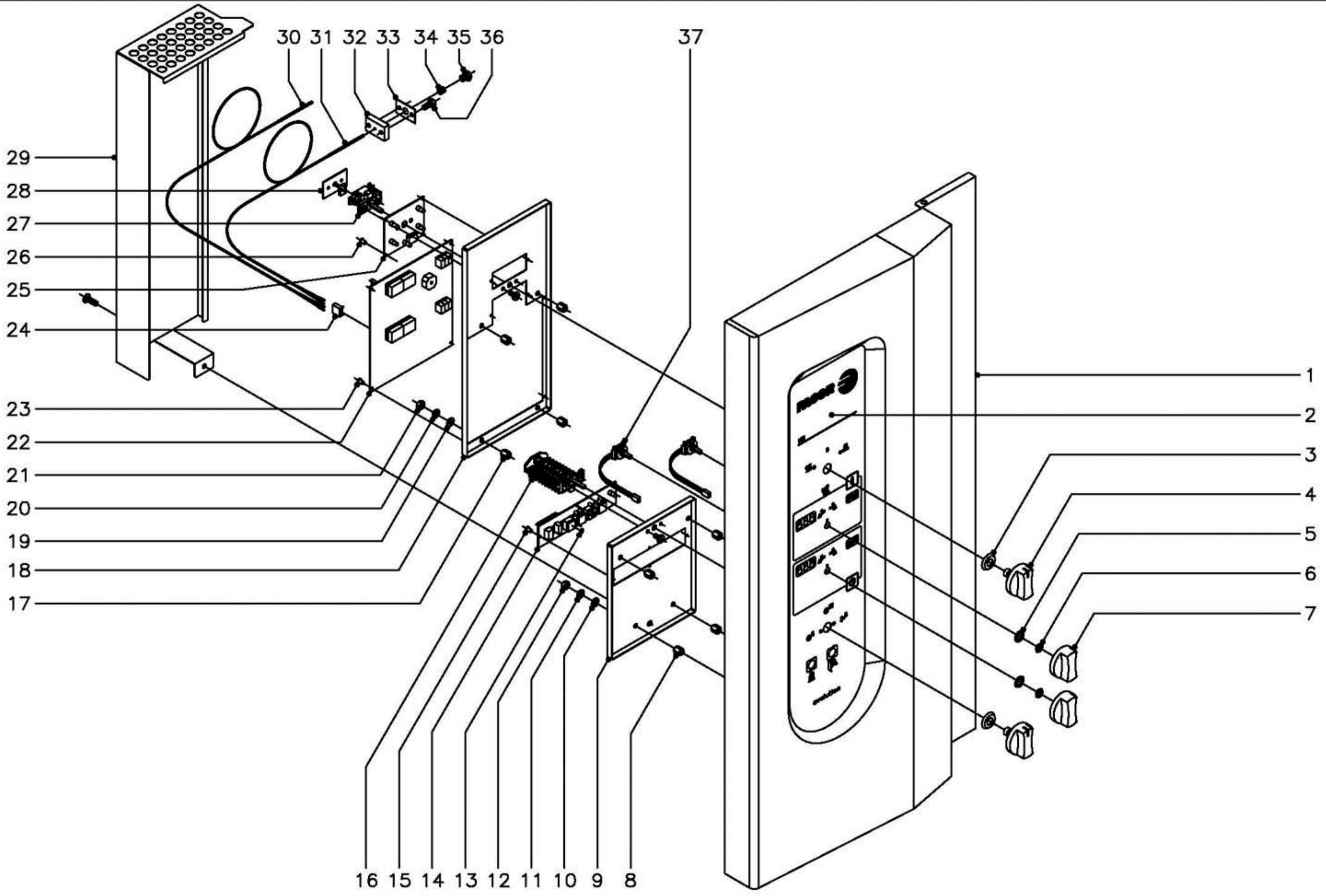
ZONA

CIERRE CHIMENEA

PLANO

C-1640

ITEM	CODIGO	DENOMINACION	TEXTO	HEI-10/21															NOTAS
1	T325021	Conjunto chimenea	Chimney set	1															
2	Q152004	Tornillo aplastado M-5x13	Flat screw M-5x13	6															
3	T325051	Guia retencion vapores	Vapour retention guide	1															
4	T325055	Retencion de vapor	Steam retainer	1															
5	Q132045	Varilla roscada M-4x16	Threaded rod M-4x16	1															
6	T325032	Leva eje chimenea	Chimney shaft cam	1															
7	Q271006	Arandela de seguridad Ø8	Safety washer Ø8	1															
8	T325030	Junta eje chimenea	Chimney shaft joint	1															
9	T325029	Guia eje chimenea	Chimney shaft guide	1															
10	Q232030	Arandela plana A-5	Flat washer A-5	2															
11	Q242030	Arandela abanico A-5	Fan shaped washer A-5	2															
12	Q162030	Tuerca exagonal M-5	Hexagonal nut M-5	2															
13	T325031	Eje chimenea	Chimney shaft	1															
14	Q151320	Tornillo alomado M-4x6	Curved screw M-4x6	1															
15	Q901312	Abrazadera elastica 50.6 - 53.2	Elastic clamp 50.6 - 53.2	2															
16	3710900	Tubo silicona Ø51xØ43x100	Silicone tubing Ø51xØ43x100	1															
17	Q221350	Tuerca exagonal autoblocante M-3	Selflocking hexagonal nut M-3	4															
18	R010534	Interruptor puerta	Door switch	2															
19	R010535	Placa separadora	Separating steel sheet	4															
20	Q032013	Tornillo alomado M-3x20	Curved screw M-3x20	4															
21	Q221350	Tuerca exagonal autoblocante M-3	Selflocking hexagonal nut M-3	4															
22	T323010	Motor chimenea	Chimney motor	1															
23				0															
24	Q162030	Tuerca exagonal M-5	Hexagonal nut M-5	2															
25	Q242030	Arandela abanico A-5	Fan shaped washer A-5	2															
26	Q232030	Arandela plana A-5	Flat washer A-5	2															
27	T325033	Escuadra amarre motor	Motor anchoring bracket	1															
28	Q152004	Tornillo aplastado M-5x13	Flat screw M-5x13	2															



N plano	Firma	Fecha	Aparato	PARTE ELECTRICA PORTAMANDOS	Lamina	Fagor Industrial S.Coop. FAGOR
C-1641		4-2005	HORNO ELECTRICO HEI-10/21		7	Oñate

ITEM	CODIGO	DENOMINACION	TEXTO	HEI-10/21														NOTAS
1	T322806	Panel portamandos	Control panel	1														
2	T353004	Serigrafia HEI-10 / 21	Serigraphy HEI-10 / 21	1														
3	R663046	Junta conmutador	Switch joint	2														
4	T303010	Boton de mando completo	Complete control button	2														
5	-	Arandela (viene con tuerca M-10)	Washer (comes with M-10 n	2														
6	Z953041	Tuerca exagonal M-10	Hexagonal nut M-10	2														
7	T303011	Boton de mando completo	Complete control button	2														
8	T302829	Distanciador componentes	Components spacer	4														
9	T303021	Soporte circuitos	Circuit holder	1														
10	Q232030	Arandela plana A-5	Flat washer A-5	4														
11	Q242030	Arandela abanico A-5	Fan shaped washer A-5	4														
12	Q163030	Tuerca exagonal M-5	Hexagonal nut M-5	4														
13	R663056	Bapipons autoadesivo	Self adhesive bupipons	2														
14	T303019	Circuito teclado	Key board circuit	1														
15	R663036	Fijacion circuito	Circuit bindings	4														
16	R663026	Conmutador de funciones	Function switch	1														
	Q151320	Tornillo alomado M-4x6	Curved screw M-4x6	2														
17	T302829	Distanciador componentes	Components spacer	4														
18	T302826	Soporte componentes	Components holder	1														
19	Q232030	Arandela plana A-5	Flat washer A-5	4														
20	Q242030	Arandela abanico A-5	Fan shaped washer A-5	4														
21	Q163030	Tuerca exagonal M-5	Hexagonal nut M-5	4														
22	T353003	Controlador	Controller	1														
23	R663036	Fijacion circuito	Circuit bindings	4														
24	T343005	Conector 4 vias	4 way connector	1														
25	T303018	Circuito de leds visualizador	Display leds circuit	1														
26	R663036	Fijacion circuito	Circuit bindings	4														
27	T353009	Conmutador acople potenciometro	Potentiometer coupling swit	1														
	Q151320	Tornillo alomado M-4x6	Curved screw M-4x6	2														

MOD.

HORNO ELECTRICO

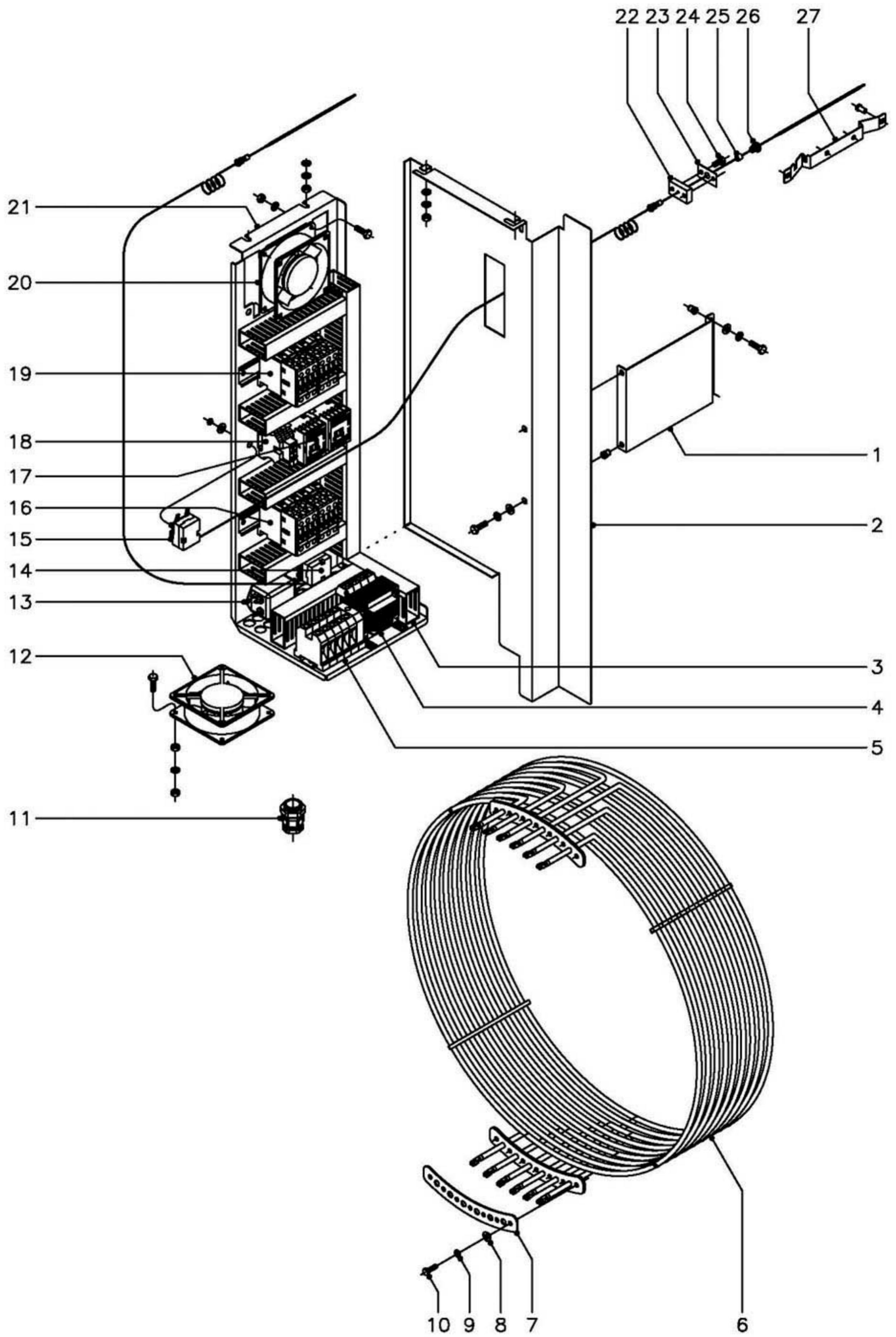
ZONA

PARTE ELECTRICA PORTAMANDOS

PLANO

C-1641

ITEM	CODIGO	DENOMINACION	TEXTO	HEI-10/21											NOTAS
28	T303020	Circuito potenciometro	Potentiometer circuit	1											
29	T303039	Proteccion circuitos	Circuit protection	1											
	Q152004	Tornillo aplastado M-5x13	Flat screw M-5x13	1											
30	T323024	Conjunto termopar vapor L=1600	Vapour thermocouple set G	1											
31	T323011	Conjunto termopar camara L=700	Chamber thermocouple set	1											
32	T112625	Base cierre sonda (pasamuros)	Probe closing base (wire pro	1											
33	R692812	Junta pasamuros	Wire protection joint	1											
34	R662652	Bicono cierre sonda	Probe closing bicone	1											
35	R662629	Racord cierre sonda	Probe closing adaptor	1											
36	Q012021	Tornillo exagonal M-4x10	Hexagonal screw M-4x10	2											
37	T303022	Selector encoder	Encoder selector	2											



N plano
C-1642

Firma

Fecha
4-2005

Aparato
CUADRO ELECTRICO
HORNO ELECTRICO HEI-10/21

Lamina
8

Fagor Industrial S.Coop. **FAGOR**
Ofite

MOD.

HORNO ELECTRICO

ZONA

CUADRO ELECTRICO

PLANO

C-1642

ITEM	CODIGO	DENOMINACION	TEXTO	HEI-10/21									NOTAS
1	T303051	Soporte cierre cuadro electrico	Switchboard closing holder	1									
	Q012032	Tornillo exagonal M-5x15	Hexagonal screw M-5x15	2									
	Q242030	Arandela abanico A-5	Fan shaped washer A-5	2									
	Q302022	Arandela plana Ø16xØ6x1,2	Flat washer Ø16xØ6x1.2	2									
	Q221342	Remache exagonal M-5	Hexagonal rivet M-5	2									
2	T323003	Cierre cuadro electrico	Switchboard closing	1									
	Q012032	Tornillo exagonal M-5x15	Hexagonal screw M-5x15	2									Amarre cierre a soporte
	Q242030	Arandela abanico A-5	Fan shaped washer A-5	2									Amarre cierre a soporte
	Q302022	Arandela plana Ø16xØ6x1,2	Flat washer Ø16xØ6x1.2	2									Amarre cierre a soporte
	Q221342	Remache exagonal M-5	Hexagonal rivet M-5	2									Amarre cierre a soporte
	Q302022	Arandela plana Ø16xØ6x1,2	Flat washer Ø16xØ6x1.2	2									Amarre cierre a techo
	Q242030	Arandela abanico A-6	Fan shaped washer A-6	2									Amarre cierre a techo
	Q163040	Tuerca exagonal M-6	Hexagonal nut M-6	2									Amarre cierre a techo
3	3715520	Canaleta unex 30x60x150	Unex feed through 30x60x1	1									
	3715520	Canaleta unex 30x60x180	Unex feed through 30x60x1	5									
	3715520	Canaleta unex 30x60x510	Unex feed through 30x60x5	1									
	Q412002	Remache tubular Ø4x7,5	Tubular rivet Ø4x7.5	15									
4	R503005	Transformador	Transformer	1									
	Q032021	Tornillo alomado M-4x10	Curved screw M-4x10	4									
	Q242020	Arandela abanico A-4	Fan shaped washer A-4	4									
	Q162020	Tuerca exagonal M-4	Hexagonal nut M-4	4									
5	R263003	Borna paso 35 gris	connection paso 35 gris	3									
	R673010	Borna neutro 35 azul	Neutral terminal 35 blue	1									
	Z103035	Borna tierra 35 amarillo-verde	Earth terminal 35 yellow-gre	1									
	Z683096	Tope final 35	End buffer 35	1									
	Z403016	Guia contactor L=100	Contactor guide G=100	1									
6	T323000	Resistencia exterior 2500 W. X6	External resistor 2500 W. X6	1									
6	T323002	Resistencia interior 2500 W. X6	Internal resistor 2500 W. X6	1									
7	T323021	Junta resistencias	Resistor joint	4									

MOD.

HORNO ELECTRICO

ZONA

CUADRO ELECTRICO

PLANO

C-1642

ITEM	CODIGO	DENOMINACION	TEXTO	HEI-10/21									NOTAS
8	Q302022	Arandela plana Ø16xØ6x1,2	Flat washer Ø16xØ6x1.2	28									
9	Q242040	Arandela abanico A-6	Fan shaped washer A-6	28									
10	Q013042	Tornillo exagonal M-6x15 (laton)	Hexagonal screw M-6x15 (b	28									
11	R033002	prensaestopas	Stuffing box	1									
12	Z103066	Ventilador 230V., 50/60 Hz.	Fan 230 V, 50/60 Hz	1									
	Q013023	Tornillo exagonal M-4x20	Hexagonal screw M-4x20	4									
	Q242020	Arandela abanico A-4	Fan shaped washer A-4	4									
	Q162020	Tuerca exagonal M-4	Hexagonal nut M-4	8									
13	T113023	Filtro de entrada	Inlet filter	1									
14	R343100	Termostato conduccion vapor	Steam conduction thermostat	1									
15	T303009	Termostato limitador	Limiter thermostat	1									
	Q232050	Arandela plana A-8	Flat washer A-8	1									
	Q162050	Tuerca exagonal M-8	Hexagonal nut M-8	1									
16	X183011	Contactador 3RT1024-1AN20	Contactador 3RT1024-1AN20	2									
	Z123019	Guia contactor L=175	Contactador guide G=175	1									
17	Z743009	Contactador sirius 3RT10, 16-2APO2	Sirius 3RT10, 16-2APO2 co	2									
18	R073005	Borna portafusible	Fuse carrier connection	2									
	P184011	Cartucho portafusible 4A.	Fuse holder cartridge 4A.	2									
	Z263303	Tope final 10	End buffer 10	2									
	Z103084	Guia contactor L=138	Contactador guide G=138	1									
	Q412002	Remache tubular Ø4x7,5	Tubular rivet Ø4x7.5	2									
19	X183011	Contactador 3RT1024-1AN20	Contactador 3RT1024-1AN20	2									
	Z123019	Guia contactor L=175	Contactador guide G=175	1									
20	Z103066	Ventilador 230V., 50/60 Hz.	Fan 230 V, 50/60 Hz	1									
	Q012021	Tornillo exagonal M-4x10	Hexagonal screw M-4x10	4									
	Q242020	Arandela abanico A-4	Fan shaped washer A-4	4									
	Q162020	Tuerca exagonal M-4	Hexagonal nut M-4	4									
21	T323004	Panel cuadro electrico	Switchboard panel	1									
	Q302022	Arandela plana Ø16xØ6x1,2	Flat washer Ø16xØ6x1.2	2									

MOD.**HORNO ELECTRICO****ZONA****CUADRO ELECTRICO****PLANO****C-1642**

ITEM	CODIGO	DENOMINACION	TEXTO	HEI-10/21										NOTAS
	Q242030	Arandela abanico A-6	Fan shaped washer A-6	2										
	Q163040	Tuerca exagonal M-6	Hexagonal nut M-6	2										
22	T112625	Base cierre sonda (pasamuros)	Probe closing base (wire pro	1										
23	R692812	Junta pasamuros	Wire protection joint	1										
24	Q012021	Tornillo exagonal M-4x10	Hexagonal screw M-4x10	2										
25	R662662	Junta cierre bulbo limitador	Limiting bulb closing joint	1										
26	R662629	Racord cierre sonda	Probe closing adaptor	1										
27	R662683	Soporte bulbo limitador	Limiting bulb holder	1										
	Q412002	Remache tubular Ø4x7,5	Tubular rivet Ø4x7.5	3										

ITEM	CODIGO	DENOMINACION	TEXTO	HEI-10/21										NOTAS
	T326500	Manual de instrucciones	Instructions manual	1										Español
	T326501	Manual de instrucciones	Instructions manual	1										Aleman
	T326506	Manual de instrucciones	Instructions manual	1										Frances
	T326507	Manual de instrucciones	Instructions manual	1										Ingles
	T326508	Manual de instrucciones	Instructions manual	1										Italiano
	T353005	Esquema electrico adhesivo	Adhesive electrical diagram	1										Plano HC-77090
	T303042	Leyenda esquema electrico	Electrical diagram legend	1										Plano HC-76970
	T353008	Plano electrico de montaje	Assembly electrical diagram	1										Plano HD-12888
	T303053	Union contactores de inversion	Inversion contactors joint	1										
	T303030	Cableado control-potenciometro	Control-potentiometer wiring	1										
	T303031	Cableado luz interior	Inner light wiring	1										
	T303028	Cableado control circuito de leds	Leds circuit control wiring	1										
	T353006	Instalacion electrica HEI-10/21	Electrical installation HEI-10	1										
	T323016	Cableado resistencias camara	Chamber resistor wiring	1										
	T353007	Cableado fuerza	Force wiring	1										

MOD.

HORNO ELECTRICO

ZONA

CAMBIOS A REALIZAR PARA PASAR DE (50Hz.) a (60 Hz.)

PLANO

C-1637

ITEM	CODIGO	DENOMINACION	TEXTO	HEI-10/21								NOTAS
		<u>PIEZAS A ELIMINAR</u>	<u>PARTS TO BE REMOVED</u>									
	T326502	Etiqueta 380 - 415 V. 50 Hz.	Label 380 - 415 V 50 Hz	1								
		<u>PIEZAS A INTRODUCIR</u>	<u>PARTS TO BE INCLUDED</u>									
	T302666	Reduccion cubreventilador 60 Hz.	Fan cover reduction 60 Hz	1								(C-1637) Entre piezas item.:13 y 17
	T326504	Etiqueta 380 - 415 V. 60 Hz.	Label 380 - 415 V 60 Hz	1								

MOD.

HORNO ELECTRICO

ZONA

CAMBIOS A REALIZAR PARA LA VERSION VAUBAN

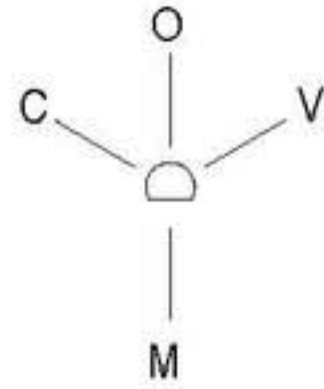
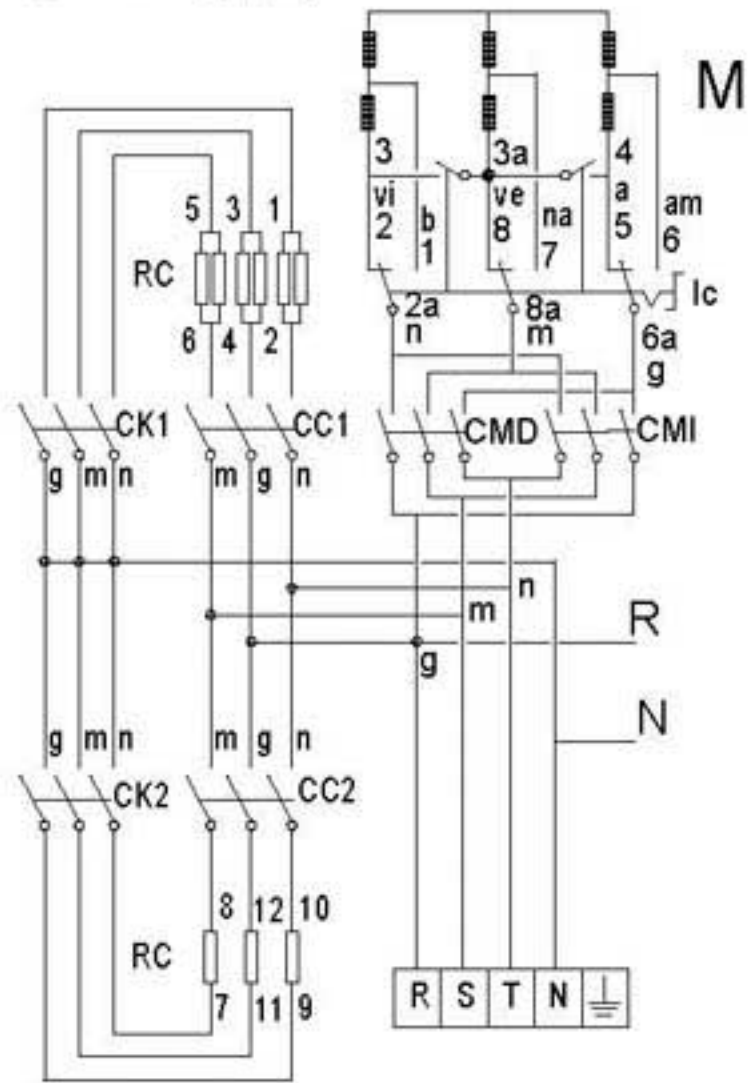
PLANO

C-1635

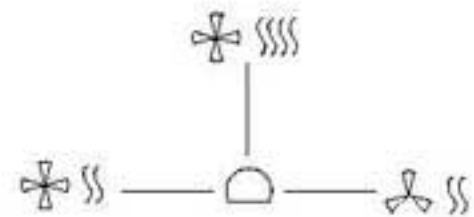
ITEM	CODIGO	DENOMINACION	TEXTO	HEI-10/21	VEI-10/21							NOTAS
		PIEZAS A ELIMINAR	PARTS TO BE REMOVED									
26	T353004	Serigrafia HEI-10 / 21	Serigraphy HEI-10 / 21	1								
	T326500	Manual de instrucciones	Instructions manual	1								Español
	T326501	Manual de instrucciones	Instructions manual	1								Aleman
	T326506	Manual de instrucciones	Instructions manual	1								Frances
	T326507	Manual de instrucciones	Instructions manual	1								Ingles
	T326508	Manual de instrucciones	Instructions manual	1								Italiano
		PIEZAS A INTRODUCIR	PARTS TO BE INCLUDED									
26	T353010	Serigrafia VAUBAN	VAUBAN serigraphy	-	1							
	T326510	Manual de instrucciones VAUBAN	VAUBAN instructions manu	-	1							

HEI 10 / 11 HEI 10 / 21

3 ~ 400V

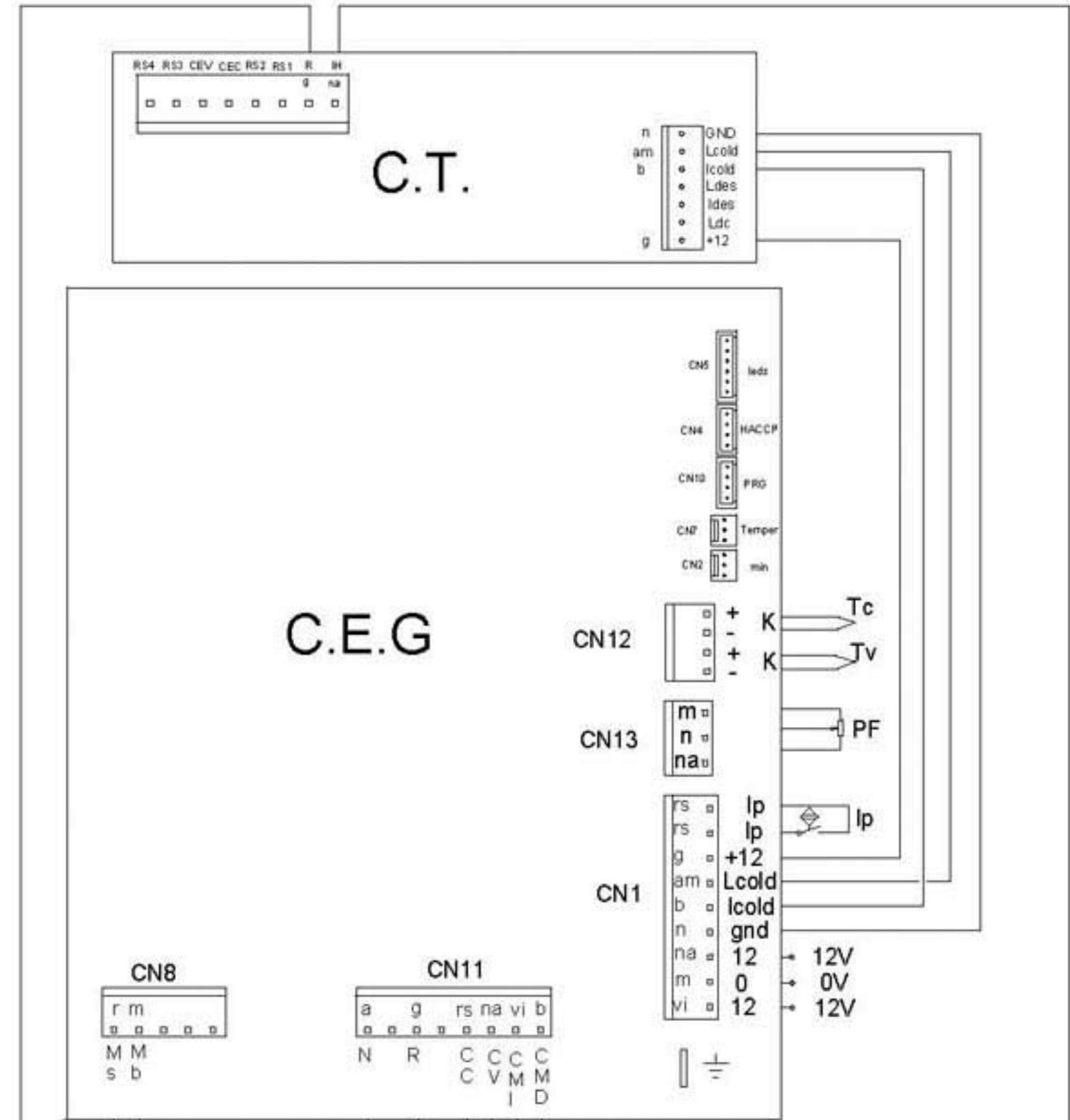
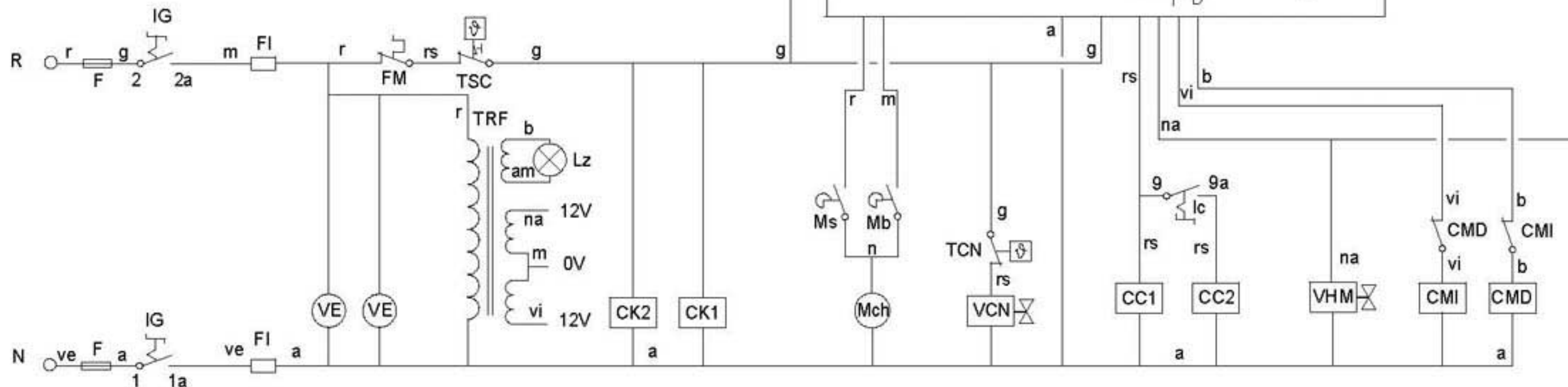
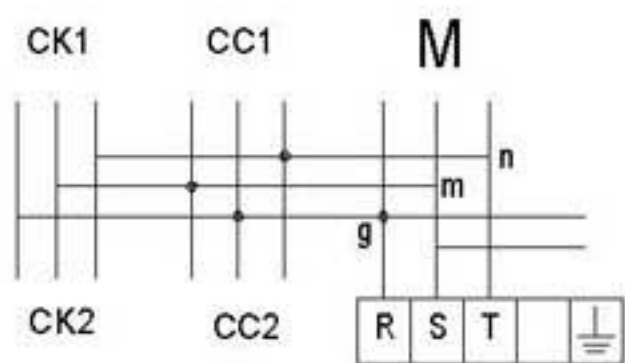


Modo \ IG	1 1a	2 2a
OFF		
VAPOR	X	X
MIXTO	X	X
CONVECCION	X	X



Ic	1	2	3	4	5	6	7	8	9
	1a	2a	3a	4a	5a	6a	7a	8a	9a
1	X		X	X		X	X		
2	X		X	X		X	X		X
3		X			X			X	
4					X			X	

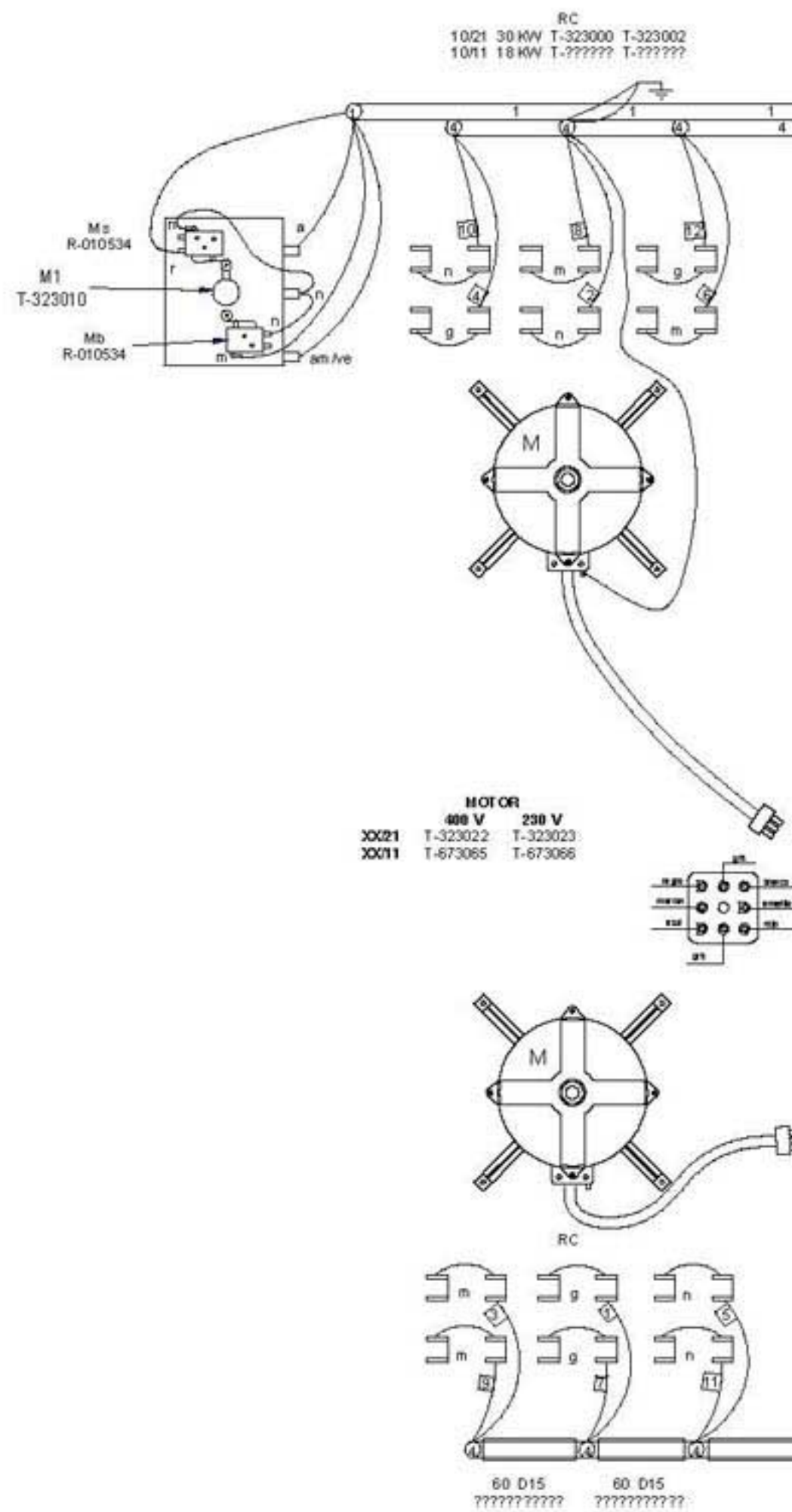
3 ~ 230V



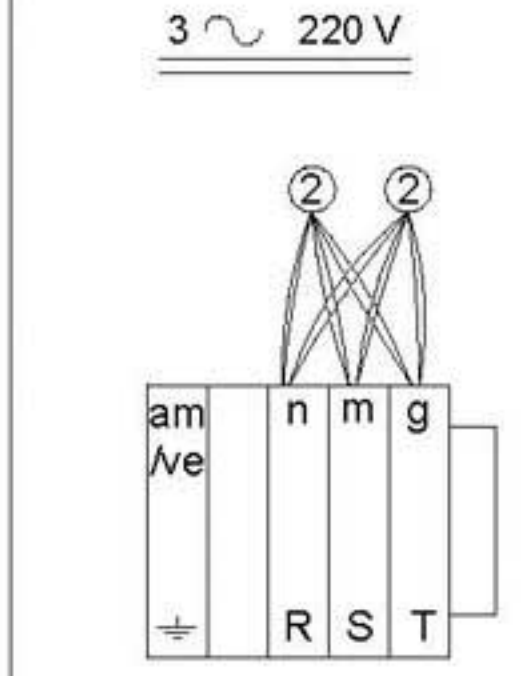
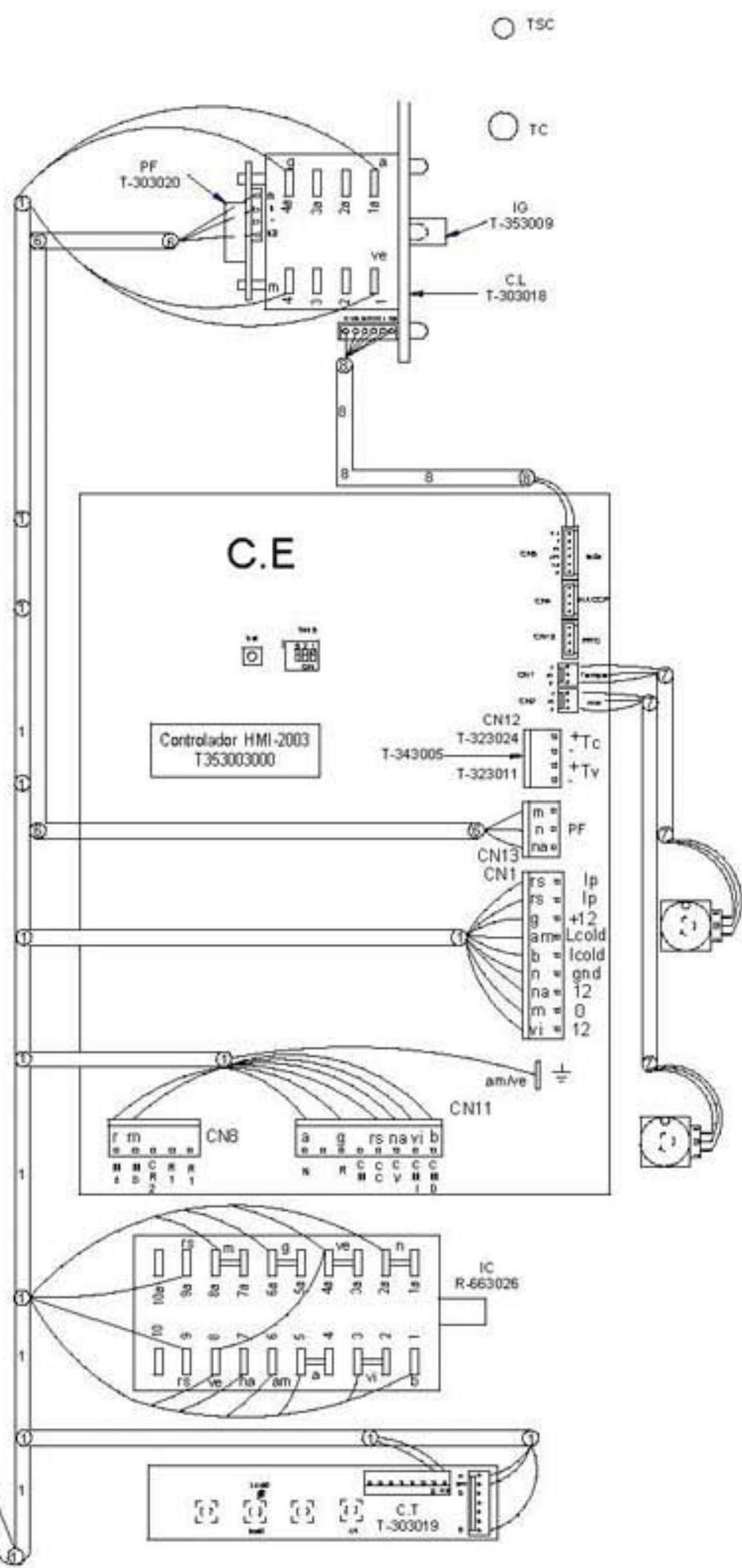
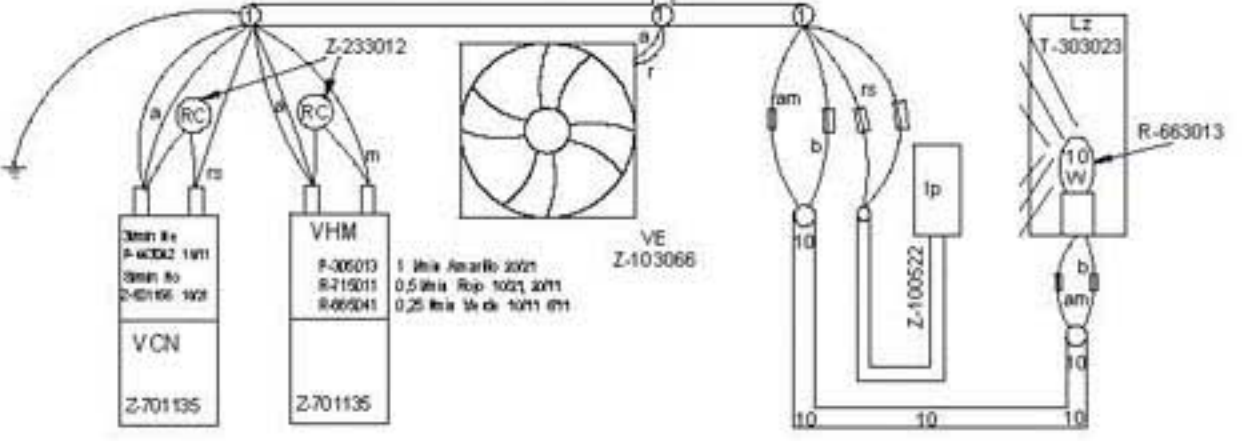
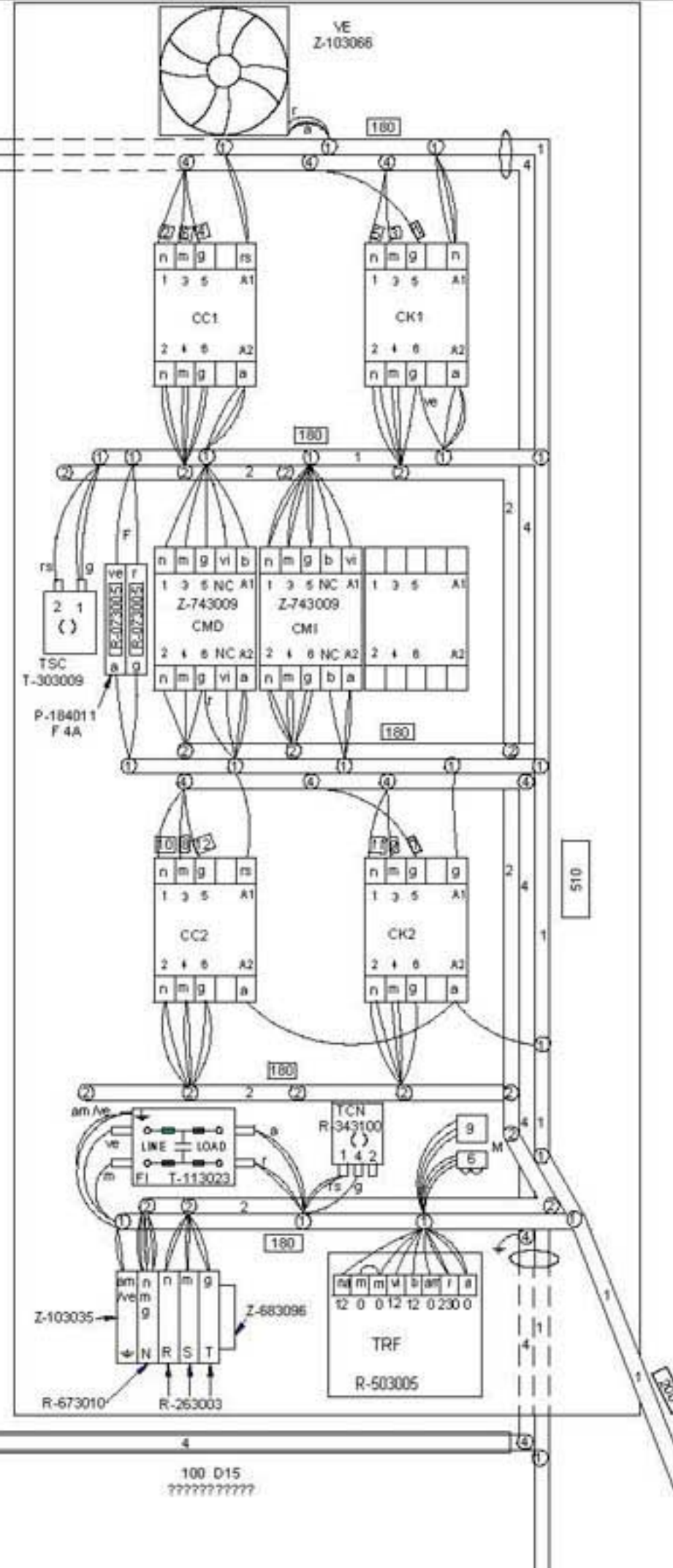
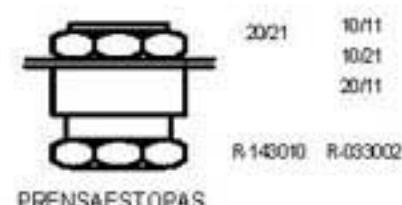
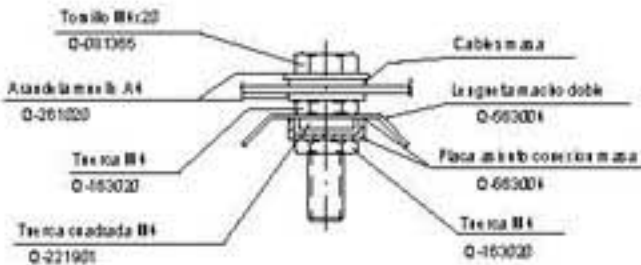
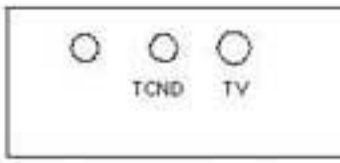
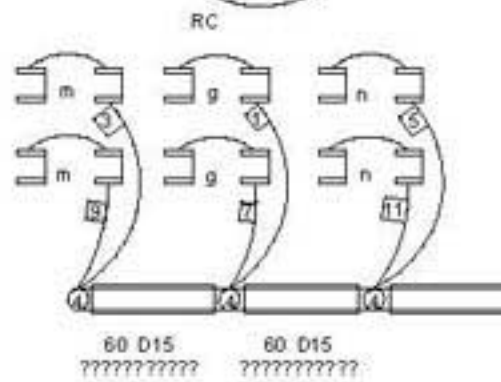
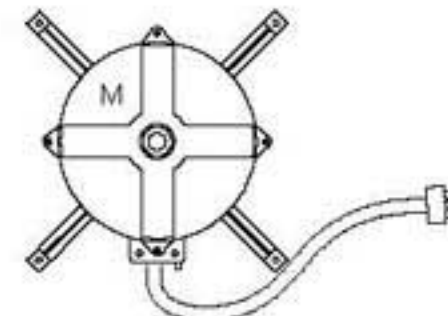
HC - 77090

T353005000

	ESPAÑOL	FRANÇAIS	ENGLISH	DEUTSCH	ITALIANO
BEC =	Bujía Encendido Cámara	Bougie Allumage Chambre	Chamber Spark Plug	Zündkerze Einschalten Garraum	Candela di Accensione Camera
BEV =	Bujía Encendido Caldera	Bougie Allumage Chaudière	Boiler Spark Plug	Zündkerze Einschalten Boile	Candela di Accensione Caldaia
C.E.C =	Control Combustión Cámara	Contrôle Combustion Chambre	Chamber Combustion Control	Steuerung Verbrennung Garraum	Controllo Combustione Camera
C.E.G =	Control Electrónico General	Contrôle Électronique Général	Main Electronic Control	Steuerung Elektronik allgemein	Controllo Elettronico Generale
C.E.V =	Control Combustión Caldera	Contrôle Combustion Chaudière	Boiler Combustion Control	Steuerung Verbrennung Boiler	Controllo Combustione Caldaia
C.H =	Circuito Humedad	Circuit Humidité	Humidity Circuit	Kreislauf Feuchtigkeit	Circuito Umidità
C.L =	Circuito Leds	Circuit LEDs	Led Circuit	Kreislauf LEDs	Circuito Leds
C.T =	Circuito Teclado	Circuit Clavier	Keypad Circuit	Kreislauf Tastatur	Cicuito Tastiera
CC1, CC2 =	Contactador Resistencia Cámara	Contacteur Élément Chauffant Chambre	Chamber Heating Element Contactor	Schütz Heizwiderstand Garraum	Contactore Resistenza Camera
CMD =	Contactador Motor Derecha	Contacteur Moteur Droite	Right Engine Contactor	Schütz Motor rechts	Contactore Motore Destra
CM =	Contactador Motor Izquierda	Contacteur Moteur Gauche	Left Engine Contactor	Schütz Motor links	Contactore Motore Sinistra
CR2 =	Relé Arranque	Relais Démarrage	Starting Relay	Relais Anlauf	Relè Accensione
CV1, CV2 =	Contactador Resistencias Caldera	Contacteur Élément Chauffant Chaudière	Boiler Heating Element Contactor	Schütz Heizwiderstand Boiler	Contactore Resistenza Caldaia
DEC =	Detector Llama Cámara	Détecteur Flamme Chambre	Chamber Flame Detector	Flammendetektor Garraum	Rilevatore di Fiamma Camera
DEV =	Detector Llama Caldera	Détecteur Flamme Chaudière	Boiler Flame Detector	Flammendetektor Boiler	Rilevatore di Fiamma Caldaia
DN =	Detector Nivel Caldera	Détecteur Niveau Chaudière	Boiler Level Detector	Pegeldetektor Boiler	Rilevatore Livello Caldaia
EM =	Encoder Selector Tiempo	Encodeur Sélecteur Temps	Time Selector Encoder	Encoder Zeitwahlschalter	Encoder Selettore Tempo
E°C =	Encoder Selector Temperatura	Encodeur Sélecteur Température	Temperature Selector Encoder	Encoder Temperaturwahlschalter	Encoder Selettore Temperatura
F =	Fusibles	Fusibles	Fuses	Sicherungen	Fusibili
FI =	Filtro Interferencias	Filtre Interférences	Interference Filter	Störungsfilter	Filtro Interferenze
FM =	Térmico Motor	Thermique Moteur	Thermal Engine	Thermoschalter Motor	Termico Motore
GV1, GV2 =	Electro válvula Gas Cámara	Électrovanne Gaz Chambre	Chamber Gas Solenoid Valve	Elektroventil Gas Garraum	Elettrovalvola Gas Camera
GV3, GV4 =	Electro válvula Gas Caldera	Électrovanne Gaz Chaudière	Boiler Gas Solenoid Valve	Elektroventil Gas Boiler	Elettrovalvola Gas Caldaia
IC =	Selector Velocidad Potencia	Sélecteur Vitesse Puissance	Power Speed Selector	Wahlschalter Geschwindigkeit Leistung	Selettore Velocità Potenza
IG =	Interruptor General	Interrupteur Général	Main Switch	Hauptschalter	Interruttore generale
IL =	Interruptor Seguridad Lavado	Interrupteur Sécurité Lavage	Washing Safety Switch	Sicherheitsschalter Waschen	Interruttore Sicurezza Lavaggio
Ip =	Interruptor Seguridad Puerta	Interrupteur Sécurité Porte	Door Safety Switch	Sicherheitsschalter Tur	Interruttore Sicurezza Porta
K1, K2, CK1, CK2=	Relé Resistencia	Relais Élément Chauffant	Heating Element Relay	Relais Heizwiderstand	Relè Resistenza
Lz =	Luz Interior	Éclairage Intérieur	Inner Light	Innenbeleuchtung	Luce Interna
M, M1, M2 =	Motor Turbina	Moteur Turbine	Turbine Engine	Motor Turbine	Motore Turbina
Mch =	Motor Chimenea	Moteur Cheminée	Stack Engine	Motor Abluftkamin	Motore Canna
Md =	Motor Válvula	Moteur vanne	Valve Engine	Motor Ventil	Motore Valvola
MBA =	Bomba Lavado	Pompe Lavage	Washing Pump	Waschenpumpe	Pompa lavaggio
Mb =	Interruptor Micro Bajada	Microrupteur Descente	Drop Microswitch	Mikroschalter Senken	Interruttore Micro Discesa
Ms =	Interruptor Micro Subida	Microrupteur Montée	Rise Microswitch	Mikroschalter Heben	Interruttore Micro Salita
PF =	Potenciómetro Selector Funciones	Potentiomètre Sélecteur Fonctions	Functions Selector Potentiometer	Potentiometer Funktionswahlschalter	Potenziometro Selettore Funzioni
PRG =	Programador	Programateur	Programmer	Programmiervorrichtung	Programmatore
RC =	Resistencias Cámara	Éléments Chauffants Chambre	Chamber Heating Element	Heizwiderstände Garraum	Resistenze Camere
RV =	Resistencias Caldera	Éléments Chauffants Chaudière	Boiler Heating Element	Heizwiderstände Boiler	Resistenze Caldaia
Tc =	Sonda Cámara	Sonde Chambre	Chamber Probe	Sonde Garraum	Sonda Camera
TCN =	Termostato Condensación	Thermostat Condensation	Condensation Thermostat	Thermostat Kondensierung	Termostato Condensazione
Tg =	Sonda Caldera	Sonde Chaudière	Boiler Probe	Sonde Boiler	Sonda Caldaia
TH =	Sonda Humedad	Sonde Humidité	Humidity Probe	Sonde Feuchtigkeit	Sonda Umidità
Tn =	Sonda Núcleo	Sonde Noyau	Core Probe	Kerntemperaturmesssonde	Sonda Nucleo
TRF =	Transformador	Transformateur	Transformer	Transformator	Trasformatore
TSC =	Termostato Seguridad Cámara	Thermostat Sécurité Chambre	Chamber Safety Thermostat	Sicherheitsthermostat Garraum	Termostato Sicurezza Camera
TSV =	Termostato Seguridad Caldera	Thermostat Sécurité Chaudière	Boiler Safety Thermostat	Sicherheitsthermostat Boiler	Termostato Sicurezza Caldaia
Tv =	Sonda Vapor	Sonde Vapeur	Steam Probe	Sonde Dampf	Sonda Vapore
VAC =	Bomba Vaciado	Pompe Vidange	Vacuum Pump	Ablaspumpe	Pompa scarico
VAd =	Electro válvula Aclarado	Électrovanne Rinçage	Rinsing Solenoid Valve	Elektroventil Klarspülen	Elettrovalvola Risciacquo
VC =	Ventilador Soplante	Ventilateur Soufflant	Blowing Fan	Ventilator Gebläse	Ventilatore Soffiante
VCN =	Electro válvula Condensación	Électrovanne Condensation	Condensation Solenoid Valve	Elektroventil Kondensierung	Elettrovalvola Condensazione
VDV =	Electro válvula Llenado Caldera	Électrovanne Remplissage Chaudière	Chamber Filling Solenoid Valve	Elektroventil Füllung Boiler	Elettrovalvola di Riempimento Caldaia
VE =	Ventilador Cuadro Eléctrico	Ventilateur Tableau Électrique	Fan Switchboard	Ventilator Elektrotafel	Ventilatore Quadro Elettrico
VHM =	Electro válvula Humidificador	Électrovanne Humidificateur	Humidifier Solenoid Valve	Elektroventil Befeuchtungsrichtung	Elettrovalvola Umidificatore
VLav =	Electro válvula Lavado	Électrovanne Lavage	Washing Solenoid Valve	Elektroventil Waschen	Elettrovalvola Lavaggio
Vv =	Variador Velocidad	Variateur Vitesse	Speed Variator	Geschwindigkeitsregler	Variatore di Velocità
COLOR	COLORES	COULEURS	COLOUR	FARBEN	COLORE
Va =	Azul	Bleu	Blue	Blau	Blu
am =	Amarillo	Jaune	Yellow	Gelb	Giallo
am/ve =	Amarilloverde	Jaune / vert	Yellow / green	Gelb/grün	Giallo/verde
b =	Blanco	Blanc	White	Weiß	Bianco
g =	Gris	Gris	Grey	Grau	Grigio
m =	Marrón	Marron	Brown	Braun	Marrone
n =	Negro	Noir	Black	Schwarz	Nero
na =	Naranja	Orange	Orange	Orange	Arancio
r =	Rojo	Rouge	Red	Rot	Rosso
rs =	Rosa	Rose	Pink	Rosa	Roseo
ve =	Verde	Vert	Green	Grün	Verde
vi =	Violeta	Violet	Purple	Violett	Viola



MOTOR
 400 V 230 V
 XX21 T-323022 T-323023
 XX11 T-673065 T-673066



- 1 T-353006
 - 2 T-353007
 - 4 T-323016
 - 6 T-303030
 - 7 T-303022
 - 8 T-303028
 - 9 T-303031
- Esquema teorico T-353005
 Leyenda T-303042
 Indicador comp. T-303043
 CC1,CC2 X-183011
 CK1,CK2 X-183011

Plano Montaje HEI 10/21 380V		T353008000	
Dx. N°	Pieza	Cant.	Material/Material
Dx. N°	Adeketak/Modificaciones:		Nork. proposatua/Propuesta de
			Data/Fecha
			Perdoi orokorak
			Tolerantziak
			Generales
			< 5 ± 0.2
			50 + 100 ± 0.8
			5 + 25 ± 0.4
			> 100 ± 1
			25 + 50 ± 0.6
			α ± 1

Sinadura/Firma		Data/Fecha	
Marradua/Dibujado	M.Haillo	12-09-2003	 Fagor Industrial, Koop. E.R., Mugailua
Proiektatua/Proyectado	M.Haillo	12-09-2003	
Egiaztatua/Comprobado	M.Haillo	12-09-2003	
Eskala/E scale			
		HORNOS	
		Plano Zk/Plano N° HD-12888	
		Zk. ord. du	
		Zk. gabik. ord.	

Plano hau ezin daiteke erabili, ez berrizatu, gure balmenik gabe.