

**Sarten basculante eléctrica  
Electric tilting Bratt Pan  
Sauteuse basculante électriques  
Elektro-kippbratpfannen  
Brasiere electriche  
Fritadeira baculante Elétrica**

**GAMA 900**

**Modelos:**

**SBE9-10 PLUS I  
SBE9-10 PLUS IM  
SBE9-15 PLUS IM**

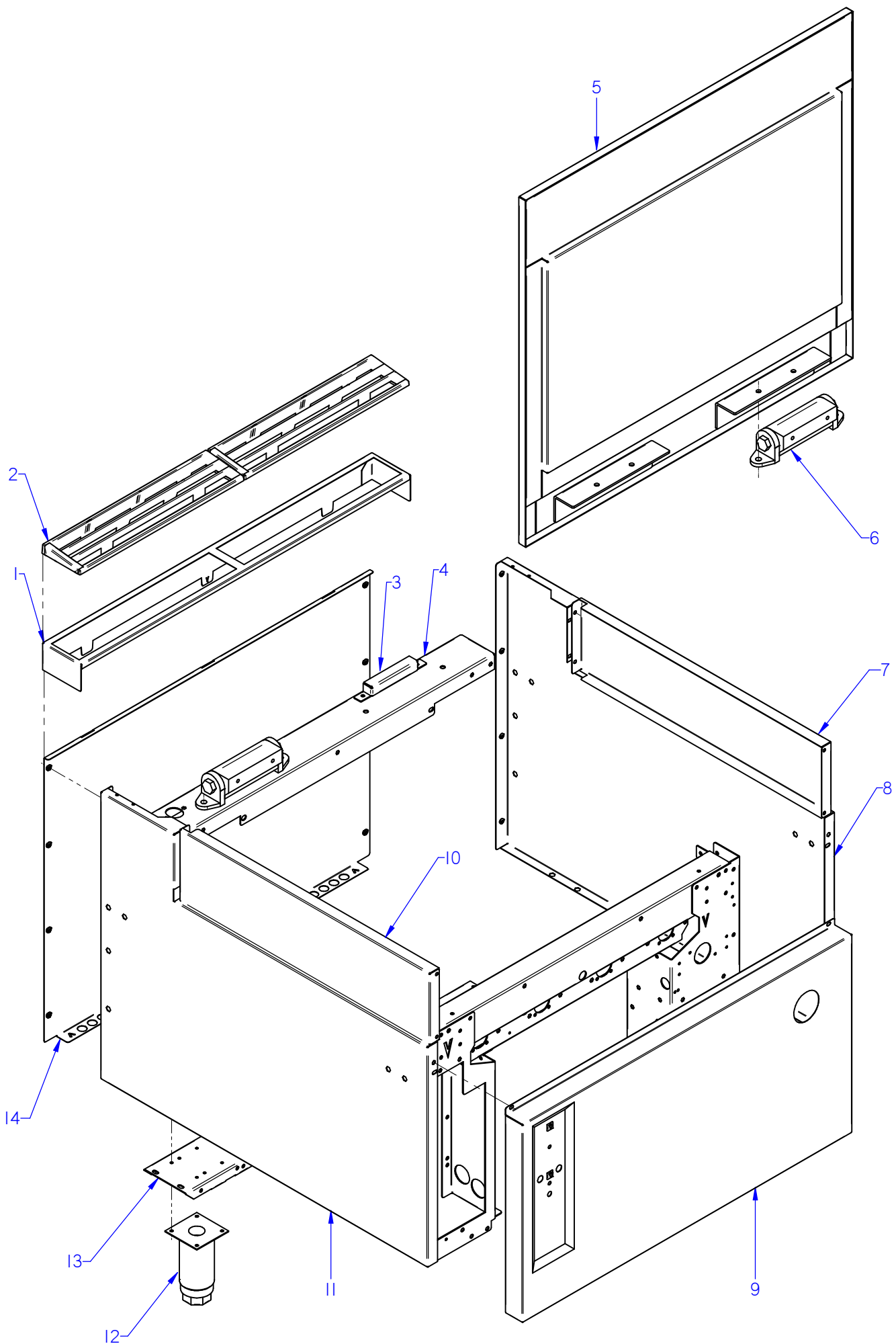
***Noviembre 2011 November***

*Revisado Marzo 2014 March Revised*

**FAGOR** 

---

F A G O R I N D U S T R I A L

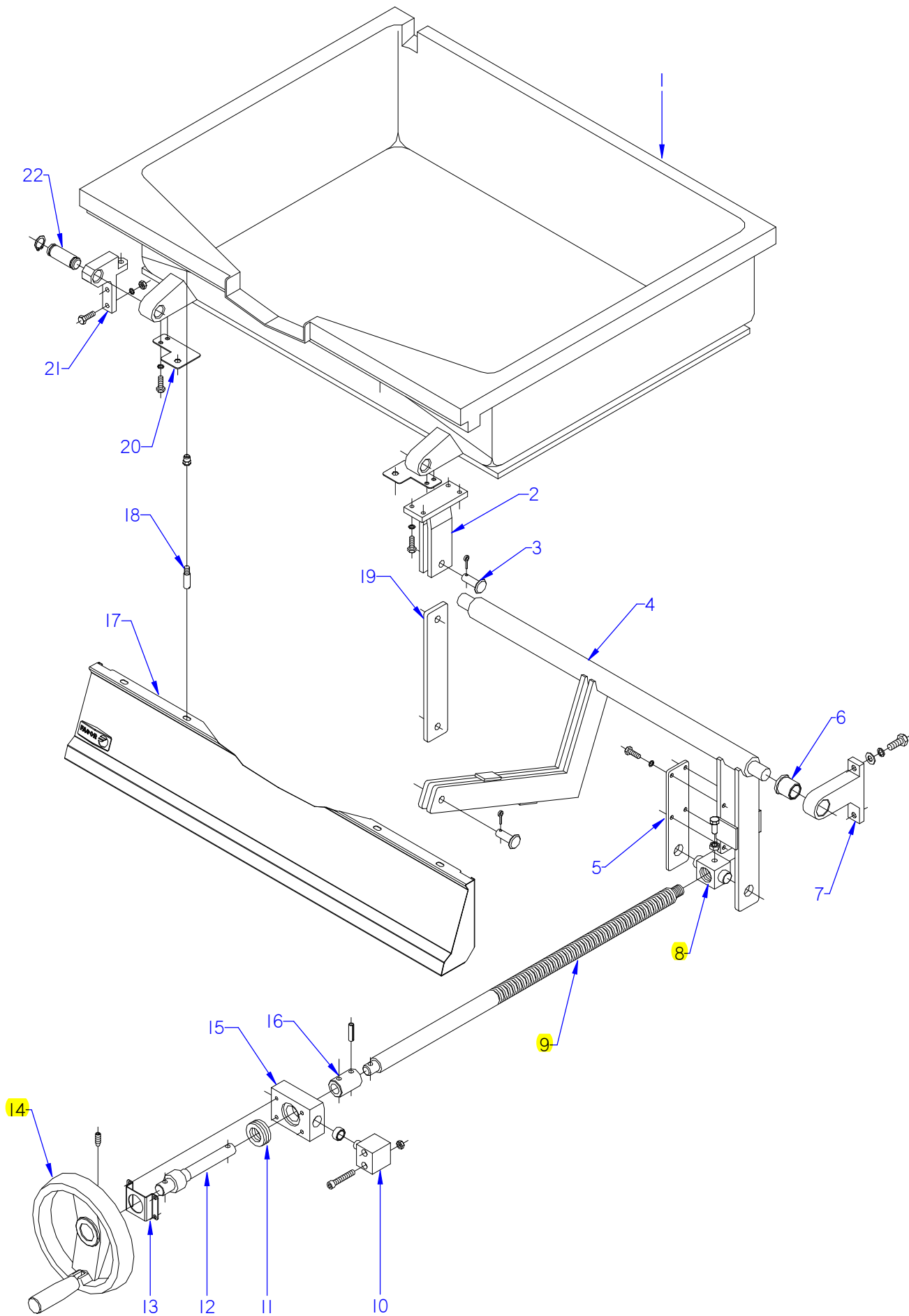


ITEM MARCADO EN COLOR = REPUESTO RECOMENDADO  
 COLOURED ITEM = RECOMMENDED SPARE PART

Nº plano / N° plane	Firma	Fecha / Date	Denominación / Denomination:	MUEBLE / FITTING	Lamina / Sheet	Fagor Industrial S.Coop. <b>FAGOR</b>
C-2925	<i>(Signature)</i>	2011-11	SARTEN BASCUL. SBE9-10 / 15PLUS	1	Oñate	

MOD.		SARTEN BASCULANTE TILTING BRATT PANS	ZONA / ZONE	MUEBLE / FITTING						PLANO DIAGRAM	C-2925			
ITEM	CODIGO REFERENCE	DENOMINACION	DENOMINATION	SBE9-10 PLUS I	SBE9-10 PLUS SI	SBE9-10 PLUS IM	SBE9-10 PLUS SIM	SBE9-15 PLUS IM	SBE9-15 PLUS SIM			ELIMINADO ELIMINATED	INTRODUCID. INTRODUCED	NOTAS
1	R205439000	SOPORTE EMBELLECEDOR 1M	TRIM SUPPORT 1M	1	1	1	1	-	-					
1	R205440000	SOPORTE EMBELLECEDOR 1,5M	1.5 M TRIM SUPPORT	-	-	-	-	1	1					
2	R205425000	EMBELLECEDOR ESMALTE	ENAMEL TRIM	2	2	2	2	3	3					
3	X082655000	TOPE TAPA SARTEN	PAN COVER TOP	2	2	2	2	2	2			31.01.13		
	Q012042000	TORNILLO EXAGONAL M6X15	HEXAGONAL BOLTM6X15	4	4	4	4	4	4					
	Q221342000	REMACHE EXAGONAL M5	HEXAGONAL RIVET M5	4	4	4	4	4	4					
	Q012031000	TORNILLO EXAGONAL M5X10	HEXAGONAL BOLT M5X10	4	4	4	4	4	4					
4	X020117000	CUBIERTA PUENTE 1M AD	BRIDGE COVERING 1M AD	1	1	1	1	-	-					
4	X080115000	CUBIERTA PUENTE 1.5M AD	BRIDGE COVERING 1.5M AD	-	-	-	-	1	1					
	Q411302000	REMACHE MONOBOLT Ø6.35	MONOBOLT RIVET D6.35	6	6	6	6	6	6					
5	X026121000	TAPA COMPLETA 1 M AD	LID COMPLETE 1 M AD	1	1	1	1	-	-			10.10.11		
5	12040857	TAPA COMPLETA 1 M AD	LID COMPLETE 1 M AD	1	1	1	1	-	-				10.10.11	
5	X086127000	TAPA COMPLETA 1,5 M AD	LID COMPLETE 1,5 M AD	-	-	-	-	1	1			10.10.11		
5	12040859	TAPA COMPLETA 1,5 M AD	LID COMPLETE 1,5 M AD	-	-	-	-	1	1				10.10.11	
S/Nº	S266124000	ASA G900 AD	HANDLE G900 AD	1	1	1	1	1	1			10.10.11		
S/Nº	12040867	ASA TAPA SARTEN ADVANCE	PAN LID HANDLE ADVANCE	1	1	1	1	1	1				10.10.11	
S/Nº	S262678000	CASQUILLO AMARRE TAPA	MOORING COVER CAP	2	2	2	2	2	2			10.10.11		
	Q012051000	TORNILLO EXAGONAL M8x10	HEXAGONAL BOLT M8x10	2	2	2	2	2	2					
6	X026123000	BISAGRA ADVANCE	HINGE ADVANCE	2	2	2	2	2	2			10.10.11		
6	12040891	BISAGRA SARTEN ADVANCE 1M	PAN HINGE ADVANCE 1M	2	2	2	2	-	-				10.10.11	
6	12040892	BISAGRA SARTEN ADVANCE 1,5M	PAN HINGE ADVANCE 1,5M	-	-	-	-	2	2				10.10.11	
	Q012053000	TORNILLO EXAGONAL M8x20	HEXAGONAL BOLT M8x20	4	4	4	4	4	4					
	Q232050000	ARANDELA A8	WASHER A8	4	4	4	4	4	4					
	Q162050000	TUERCA EXAGONAL M8X1 DIN 934	HEXAGONAL NUT M8X1 DIN 934	4	4	4	4	4	4					
7	X082822000	LATERAL CUBA ADVANCE	PAN ADVANCE SIDE	1	1	1	1	1	1					
8	X082819000	PANEL LATERAL DERECHO AD	RIGHT SIDE PANEL AD	1	-	1	-	1	-					
8	X242825000	PANEL LATERAL DERECHO S AD	RIGHT SIDE PANEL S AD	-	1	-	1	-	1					
	Q012042000	TORNILLO EXAGONAL M6x15	HEXAGONAL BOLT M6x15	4	-	4	-	4	-					
	Q262040000	ARANDELA GROW. A6 A304	WASHER GROW. A6 A304	4	-	4	-	4	-					
	Q152004000	TORNILLO APLASTADO M5x13	FLAT HEAD SCREW M5X13	1	1	1	1	1	1					
	Q162030000	TUERCA EXAGONAL M5	HEXAGONAL NUT M5	-	-	-	1	-	1					

MOD.		SARTEN BASCULANTE TILTING BRATT PANS		ZONA / ZONE		MUEBLE / FITTING						PLANO DIAGRAM		C-2925	
ITEM	CODIGO REFERENCE	DENOMINACION	DENOMINATION	SBE9-10 PLUS I	SBE9-10 PLUS SI	SBE9-10 PLUS IM	SBE9-10 PLUS SIM	SBE9-15 PLUS IM	SBE9-15 PLUS SIM			ELIMINADO ELIMINATED	INTRODUCID. INTRODUCED	NOTAS	
9	X042812000	PANEL FRONTAL SBE9-10 AD	FRONT PANEL SBE9-10 AD	1	1										
9	X402802000	PANEL FRONTAL SBE9-10 M AD	FRONT PANEL SBE9-10 M AD			1	1								
9	X082824000	PANEL FRONTAL SBE9-15 AD	FRONT PANEL SBE9-15 AD					1	1						
	Q152004000	TORNILLO APLASTADO M5X13	FLAT HEAD SCREW M5X13	2	2	2	2	2	2						
	Q012042000	TORNILLO EXAGONAL M6x15	HEXAGONAL BOLT M6x15	2	2	2	2	2	2						
	Q262040000	ARANDELA GROW. A6 A304	WASHER GROW. A6 A304	2	2	2	2	2	2						
10	X082822000	LATERAL CUBA ADVANCE	PAN ADVANCE SIDE	1	1	1	1	1	1						
11	X082818000	PANEL LATERAL IZQUIERDO AD	LEFT SIDE PANEL AD	1		1		1							
11	X242824000	PANEL LATERAL IZQUIERDO S AD	LEFT SIDE PANEL S AD		1		1		1						
	Q221343000	REMACHE EXAGONAL M6	HEXAGONAL RIVET M6	11		11		11							
	Q012042000	TORNILLO EXAGONAL M6x15	HEXAGONAL BOLT M6x15	4		4		4							
	Q262040000	ARANDELA GROW. A6 A304	WASHER GROW. A6 A304	4		4		4							
	Q221342000	REMACHE EXAGONAL M5	HEXAGONAL RIVET M5	3	3	3	3	3	3						
	Q152004000	TORNILLO APLASTADO M5x13	FLAT HEAD SCREW M5X13	1	1	1	1	1	1						
	Q162030000	TUERCA EXAGONAL M5	HEXAGONAL NUT M5				1		1						
12	X260151000	PATA REGULABLE	ADJUSTABLE LEG	4		4		4							
	Q411304000	REMACHE AVIBULB Ø 4,8	AVIBULB RIVET Ø 4.8	16		16		16							
13	X022616000	LISTON SOPORTE PATAS 1M AD	LEG SUPPORT STRIP 1M AD	2	1	2	1								
13	X240129000	LISTON SOPORTE POST. 1M AD	REAR SUPPORT STRIP 1M AD		1		1								
13	X080107000	LISTON SOPORTE PATAS 1,5M AD	LEG SUPPORT STRIP 1.5 M AD					2	1						
13	X240138000	LISTON SOPORTE POST. 1,5M AD	REAR SUPPORT STRIP 1,5M AD						1						
	Q221343000	REMACHE EXAGONAL M6	HEXAGONAL RIVET M6	2		2		2							
14	X022841000	PANEL POSTERIOR 1M AD	REAR PANEL 1M AD	1		1									
14	S262804000	PANEL POSTERIOR 1M S AD	REAR PANEL 1M S AD		1		1								
14	U962801000	PANEL POSTERIOR 1,5 M AD	REAR PANEL 1.5 M AD					1							
14	X412803000	PANEL POSTERIOR 1,5 M S AD	REAR PANEL 1,5 M S AD						1						
	Q419005000	REMACHE 4x8 ALMG3 / ALUMINIO	RIVET 4X8 ALMG3 / ALUMINIUM	8	8	8	8	8	8						



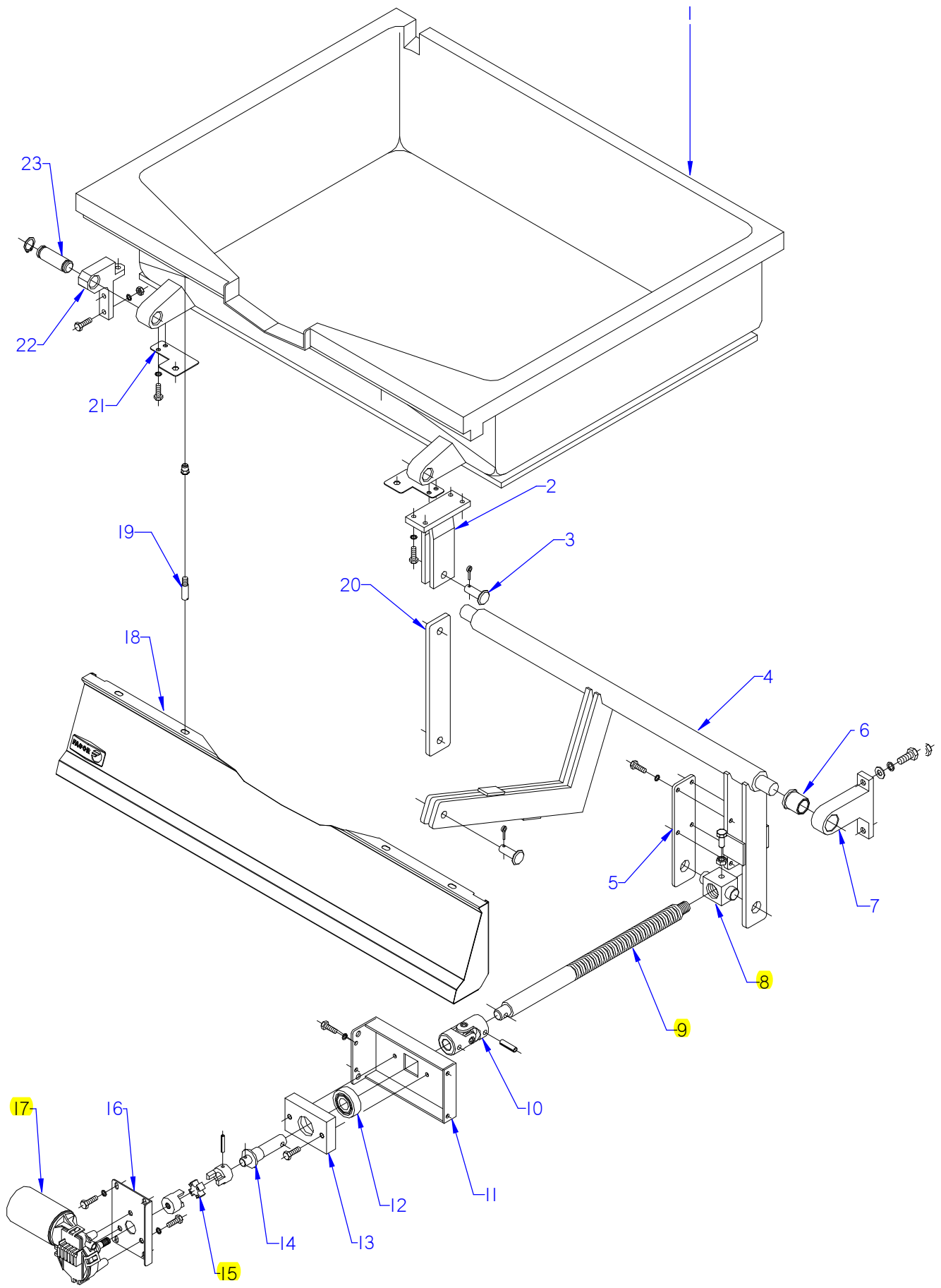
ITEM MARCADO EN COLOR = REPUESTO RECOMENDADO  
 COLOURED ITEM = RECOMMENDED SPARE PART

Nº plano / N° plane	Firma	Fecha / Date	Denominación / Denomination:	CUBA / PAN	Lamina / Sheet	Fagor Industrial S.Coop. <b>FAGOR</b>
C-2926	<i>name Bern...</i>	2011-11	SARTEN BASCUL. SBE9-10PLUS I		2	Oñate

MOD.	SARTEN BASCULANTE TILTING BRATT PANS		ZONA / ZONE	CUBA / PAN								PLANO DIAGRAM	C-2926	
ITEM	CODIGO REFERENCE	DENOMINACION	DENOMINATION	SBE9-10 PLUS I								ELIMINADO ELIMINATED	INTRODUCID. INTRODUCED	NOTAS
1	X026117000	CUBA INOXIDABLE SARTEN 910 AD	INOX TUB FRYPAN 910 AD	1										
	Q151336000	TORNILLO SOPORTE GUIAS	SCREW SUPPORT GUIDELINES	2										
2	X156163000	BRAZO DE GIRO	ROTATION ARM	1										
	Q012043000	TORNILLO EXAGONAL M6x20 A304	HEXAGONAL BOLT M6x20 A304	4										
	Q262040000	ARANDELA GROW. A6 A304	WASHER GROW. A6 A304	4										
3	X156123000	BULON Ø12	PIN Ø12	2										
	Q352024000	PASADOR DE ALETAS Ø4x25	COTTER PIN Ø4x25	2										
4	X156148000	BRAZO ELEVADOR COMPLETO	COMPLETE ELEVATION ARM	1										
5	X156149000	BRAZO LATERAL	SIDE ARM	1										
	Q012042000	TORNILLO EXAGONAL M6x15	HEXAGONAL BOLT M6x15	4										
	Q262040000	ARANDELA GROW. A6 A304	WASHER GROW. A6 A304	4										
6	X109550000	COJINETE SELFOIL B11	BEARING SELFOIL B11	2										
7	X150108000	SOPORTE DE GIRO	ROTATION SUPPORT	2										
	Q012063000	TORNILLO EXAG. M10x20 A304	HEX BOLT M10x20 A304	4										
	Q261060000	ARANDELA MUELLE A10	SPRING WASHER A10	4										
	Q232060000	ARANDELA A10	WASHER A10	4										
8	X146136000	TUERCA HUSILLO	SPINDLE NUT	1								01.03.13		
8	12046610	TUERCA HUSILLO	SPINDLE NUT	1									01.03.13	
	Q011364000	TORNILLO EXAG. M10x25	HEX BOLT M10x25	1										
	Q161360000	TUERCA EXAG. M10 H. ZINCADA	HEXAG. SCREW M10 H. ZINC-CO.	1										
9	X146134000	HUSILLO GAMA 900	SPINDLE RANGE 900	1								01.03.13		
9	12046627	HUSILLO GAMA 900 Tr 26x5	SPINDLE RANGE 900 Tr 26x5	1									01.03.13	
10	X156113000	PIVOTE DE GIRO	ROTATION PIVOT	2										
	S116126000	COJINETE CILINDRICO	CYLINDRICAL BEARING	2										
	Q052046000	TORNILLO ALLEN M6x40 A304	ALLEN BOLT M6x40 A304	4										
	Q162040000	TUERCA EXAGONAL M6	HEXAGONAL NUT M6	4										
11	X156125000	RODAMIENTO 51204	BEARING 51204	1										
12	X156161000	EJE VOLANTE COMPLETO	COMPLETE FLYSHAFT	1										
13	X152619000	SOPORTE EJE VOLANTE	FLYSHAFT SUPPORT	1										
	Q012041000	TORNILLO EXAGONAL M6x10 A304	HEXAGONAL BOLT M6x10 A304	4										
	Q262040000	ARANDELA GROW. A6 A304	WASHER GROW. A6 A304	4										

MOD.	<b>SARTEN BASCULANTE TILTING BRATT PANS</b>	<b>ZONA / ZONE</b>	<b>CUBA / PAN</b>	<b>PLANO DIAGRAM</b>	<b>C-2926</b>
------	---	--------------------	-------------------	--------------------------	---------------

ITEM	CODIGO REFERENCE	DENOMINACION	DENOMINATION	SBE9-10 PLUS I									ELIMINADO ELIMINATED	INTRODUCID. INTRODUCED	NOTAS
14	X156139000	VOLANTE ELESA	FLYSHAFT ELESA	1											
	Q131552000	VARILLA ROSCADA M8x15	THREADED ROD M8X15	2											
15	X156114000	SOPORTE RODAMIENTO	BEARING SUPPORT	1											
16	X156115000	CASQUILLO	BUSHING	1											
	Q371027000	MANGUITO DE SUJECCION Ø8x30	FASTENING SLEEVE Ø8x30	2											
17	X022845000	PORTAMANDOS SARTEN 1M AD	FRYPAN CONTROL HOLDER 1M	1											
	U022836000	ESCUDO FAGOR	FAGOR EMBLEM	1											
	Q301304000	ARANDELA PLANA 23x6,5x2	FLAT WASHER 23X6.5X2	2											
	Q012042000	TORNILLO EXAGONAL M6x15	HEXAGONAL BOLT M6x15	2											
	Q221023000	CLIP SUJECIÓN RÁPIDA D-5	QUICK FASTENING CLIP D-5	2											
18	Q151336000	TORNILLO SOPORTE GUIAS	GUIDE SUPPORT BOLT	2											
19	X156151000	BRAZO	ARM	1											
20	X156156000	AMARRE PANEL PORTAMANDOS	CONTROL HOLDER PANEL FAST.	2											
	Q012041000	TORNILLO EXAGONAL M6x10 A304	HEXAGONAL BOLT M6x10 A304	4											
	Q262040000	ARANDELA GROW. A6 A304	WASHER GROW. A6 A304	4											
21	X156145000	SOPORTE GIRO CUBA	TUB ROTATION SUPPORT	2											
	Q012043000	TORNILLO EXAGONAL M6x20 A304	HEXAGONAL BOLT M6x20 A304	6											
	Q262040000	ARANDELA GROW. A6 A304	WASHER GROW. A6 A304	6											
	Q162040000	TUERCA EXAGONAL M6	HEXAGONAL NUT M6	6											
22	X109511000	BULON LATON	BRASS BOLT	2											
	Q301020000	ANILLO DE SEGURIDAD 20x1,2	CIRCLIP 20x1.2	4											



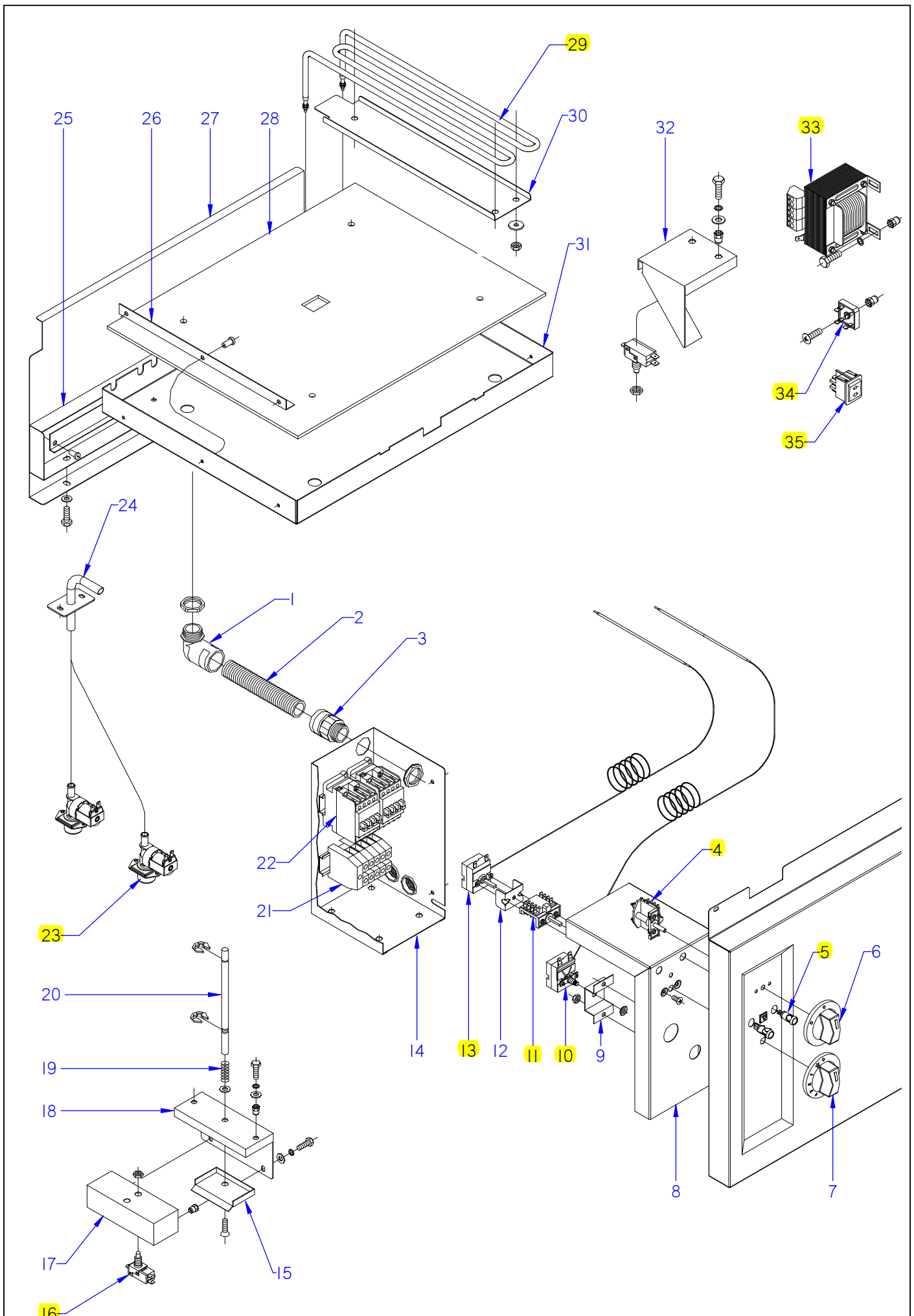
ITEM MARCADO EN COLOR = REPUESTO RECOMENDADO  
 COLOURED ITEM = RECOMMENDED SPARE PART

Nº plano / N° plane	Firma	Fecha / Date	Denominación / Denomination:	CUBA / PAN	Lamina / Sheet	Fagor Industrial S.Coop. <b>FAGOR</b>
C-2927	<i>(Signature)</i>	2011-11	SARTEN BASC. SBE9-10/15 PLUS IM		3	Oñate



MOD.		SARTEN BASCULANTE TILTING BRATT PANS	ZONA / ZONE	CUBA / PAN							PLANO DIAGRAM	C-2927	
ITEM	CODIGO REFERENCE	DENOMINACION	DENOMINATION	SBE9-10 PLUS IM	SBE9-15 PLUS IM						ELIMINADO ELIMINATED	INTRODUCID. INTRODUCED	NOTAS
1	X026117000	CUBA INOXIDABLE SARTEN 910 AD	INOX TUB FRYPAN 910 AD	1									
1	X426108000	CUBA INOXIDABLE SBE9-15 I AD	INOX TUB FRYPAN SBE9-15 I AD		1								
	Q151336000	TORNILLO SOPORTE GUIAS	SCREW SUPPORT GUIDELINES	2	2								
	Q221342000	REMACHE EXAGONAL M5	HEXAGONAL RIVET M5	4	4								
2	X156163000	BRAZO DE GIRO	ROTATION ARM	1	1								
	Q012043000	TORNILLO EXAGONAL M6x20 A304	HEXAGONAL BOLT M6x20 A304	4	4								
	Q262040000	ARANDELA GROW. A6 A304	WASHER GROW. A6 A304	4	4								
3	X156123000	BULON Ø12	PIN Ø12	2	2								
	Q352024000	PASADOR DE ALETAS Ø4x25	COTTER PIN Ø4x25	2	2								
4	X156148000	BRAZO ELEVADOR COM. SB9-10	COM. ELEVATION ARM SB9-10	1									
4	X426103000	BRAZO ELEVADOR COM. SBE9-15	COM. ELEVATION ARM SBE9-15		1								
5	X156149000	BRAZO LATERAL	SIDE ARM	1	1								
	Q012042000	TORNILLO EXAGONAL M6x15	HEXAGONAL BOLT M6x15	4	4								
	Q262040000	ARANDELA GROW. A6 A304	WASHER GROW. A6 A304	4	4								
6	X109550000	COJINETE SELFOIL B11	BEARING SELFOIL B11	2	2								
7	X150108000	SOPORTE DE GIRO	ROTATION SUPPORT	2	2								
	Q012063000	TORNILLO EXAG. M10x20 A304	HEX BOLT M10x20 A304	4	4								
	Q261060000	ARANDELA MUELLE A10	SPRING WASHER A10	4	4								
	Q232060000	ARANDELA A10	WASHER A10	4	4								
8	X146136000	TUERCA HUSILLO	SPINDLE NUT	1	1						01.03.13		
8	12046610	TUERCA HUSILLO	SPINDLE NUT	1	1							01.03.13	
	Q011364000	TORNILLO EXAG. M10x25	HEX BOLT M10x25	1	1								
	Q161360000	TUERCA EXAG. M10 H. ZINCADA	HEXAG. SCREW M10 H. ZINC-CO.	1	1								
9	X146134000	HUSILLO GAMA 900	SPINDLE RANGE 900	1	1						01.03.13		
9	12046627	HUSILLO GAMA 900 Tr 26x5	SPINDLE RANGE 900 Tr 26x5	1	1							01.03.13	
10	X126114000	JUNTA UNIVERSAL 107A	UNIVERSAL JOINT 107A	1	1								
	Q371027000	MANGUITO DE SUJECCION Ø8x30	FASTENING SLEEVE Ø8x30	2	2								
11	X082643000	SOPORTE EJE MOTOR AD	MOTOR SHAFT SUPPORT AD	1	1								
	Q012032000	TORNILLO EXAGONAL M5x15 A304	HEXAGONAL BOLT M5x15 A304	4	4								
	Q262030000	ARANDELA GROW. A5 A304	WASHER GROW. A5 A304	4	4								
12	X346109000	RODAMIENTO SKF	SKF BEARING	1	1								

MOD.		SARTEN BASCULANTE TILTING BRATT PANS		ZONA / ZONE		CUBA / PAN						PLANO DIAGRAM		C-2927	
ITEM	CODIGO REFERENCE	DENOMINACION	DENOMINATION	SBE9-10 PLUS IM	SBE9-15 PLUS IM							ELIMINADO ELIMINATED	INTRODUCID. INTRODUCED	NOTAS	
13	X346105000	SOPORTE RODAMIENTO	BEARING SUPPORT	1	1										
	Q012044000	TORNILLO EXAGONAL M6x25	HEXAGONAL BOLT M6x25	2	2										
14	X346106000	EJE MOTOR	MOTOR SHAFT	1	1										
15	X346107000	ACOPLAMIE. ELASTICO LOVEJOY	ELASTIC LOVEJOY COUPLING	1	1										
	Q371032000	PASADOR ELASTICO Ø5x30	ELASTIC PIN Ø5x30	2	2										
16	X082641000	SOPORTE MOTOR AD	MOTOR SUPPORT AD	1	1										
	Q012042000	TORNILLO EXAGONAL M6x15	HEXAGONAL BOLT M6x15	4	4										
	Q262040000	ARANDELA GROW. A6 A304	WASHER GROW. A6 A304	4	4										
17	X343020000	MOTORREDUCTOR (BOSCH)	GEAR MOTOR (BOSCH)	1	1										
	Q012042000	TORNILLO EXAGONAL M6x15	HEXAGONAL BOLT M6x15	3	3										
	Q262040000	ARANDELA GROW. A6 A304	WASHER GROW. A6 A304	3	3										
	X022845000	PORTAMANDOS SBG9-10 I M AD	CONTROL HOLDER SBG9-10 I M	1	—										
18	X082830000	PORTAMANDOS SB9-15 I AD	CONTROL HOLDER SB9-15 I AD	—	1										
	U022836000	ESCUDO FAGOR	FAGOR EMBLEM	1	1										
	Q301304000	ARANDELA PLANA 23x6,5x2	FLAT WASHER 23X6.5X2	2	2										
	Q012042000	TORNILLO EXAGONAL M6x15	HEXAGONAL BOLT M6x15	2	2										
	Q221023000	CLIP SUJECIÓN RÁPIDA D-5	QUICK FASTENING CLIP D-5	2	2										
19	Q151336000	TORNILLO SOPORTE GUIAS	GUIDE SUPPORT BOLT	2	2										
20	X156151000	BRAZO	ARM	1	1										
21	X156156000	AMARRE PANEL PORTAMANDOS	CONTROL HOLDER PANEL FAST.	2	2										
	Q012041000	TORNILLO EXAGONAL M6x10 A304	HEXAGONAL BOLT M6x10 A304	4	4										
	Q262040000	ARANDELA GROW. A6 A304	WASHER GROW. A6 A304	4	4										
22	X156145000	SOPORTE GIRO CUBA	TUB ROTATION SUPPORT	2	2										
	Q012043000	TORNILLO EXAGONAL M6x20 A304	HEXAGONAL BOLT M6x20 A304	6	6										
	Q262040000	ARANDELA GROW. A6 A304	WASHER GROW. A6 A304	6	6										
	Q162040000	TUERCA EXAGONAL M6	HEXAGONAL NUT M6	6	6										
23	X109511000	BULON LATON	BRASS BOLT	2	2										
	Q301020000	ANILLO DE SEGURIDAD 20x1,2	CIRCLIP 20x1.2	4	4										
	Q012032000	TORNILLO EXAGONAL M5x15	HEXAGONAL BOLT M5x15	1	1										
	Q012033000	TORNILLO EXAGONAL M5x20	HEXAGONAL BOLT M5x20	1	1										



ITEM MARCADO EN COLOR = REPUESTO RECOMENDADO  
 COLOURED ITEM = RECOMMENDED SPARE PART

Nº plano / N° plane	Firma	Fecha / Date	Denominación / Denomination: FUNCIONAL ELECTRICO / FUNCTIONAL ELECTRICAL	Lamina / Sheet	Fagor Industrial S.Coop. <b>FAGOR</b>
C-2928	<i>hane Bern...</i>	2011-11	SARTEN BASCUL. SBE9-10 / 15 PLUS	4	Oñate

MOD.		SARTEN BASCULANTE TILTING BRATT PANS	ZONA / ZONE	PARTE FUNCIONAL ELECTRICO FUNCTIONAL ELECTRICAL PART							PLANO DIAGRAM	C-2928	
ITEM	CODIGO REFERENCE	DENOMINACION	DENOMINATION	SBE9-10 PLUS I	SBE9-10 PLUS IM	SBE9-15 PLUS IM					ELIMINADO ELIMINATED	INTRODUCID. INTRODUCED	NOTAS
16	X343015000	MICRORRUPTOR 32280001	MICROSWITCH 32280001	1	3	3					03.10.11		
16	12040850	MICRORRUPTOR 250V AC16A VDE	MICROSWITCH 250V AC16A VDE	1	3	3						03.10.11	
17	X022620000	CAJA PORTA MICRO AD	MICRO HOLDER BOX AD	1	1	1							
	Q221342000	REMACHE EXAGONAL M5	HEXAGONAL RIVET M5	4	4	4							
	Q012031000	TORNILLO EXAGONAL M5x10 A304	HEXAGONAL BOLT M5x10 A304	2	2	2							
	Q302022000	ARANDELA 16x6x1,2 A304	WASHER 16x6x1.2 A304	2	2	2							
	Q262030000	ARANDELA GROW. A5 A304	WASHER GROW. A5 A304	2	2	2							
18	X022619000	SOPORTE CAJA PORTA MICRO AD	MICRO HOLDER BOX SUPPORT	1	1	1							
	Q012031000	TORNILLO EXAGONAL M5x10 A304	HEXAGONAL BOLT M5x10 A304	2	2	2							
	Q302022000	ARANDELA 16x6x1,2 A304	WASHER 16x6x1.2 A304	2	2	2							
	Q262030000	ARANDELA GROW. A5 A304	WASHER GROW. A5 A304	2	2	2							
19	Z700603000	MUELLE 07777	SPRING 07777	1	1	1							
20	X152682000	EJE PULSADOR MICRO	MICRO BUTTON SHAFT	1	1	1							
	Q271033000	ARANDELA DE SEGURIDAD Ø6	SAFETY WASHER Ø6	2	2	2							
21	P453025000	BORNES 10 WDU-10203.O	TERMINALS 10 WDU-10203.O	3	3								
21	Z683069000	BORNA 16	TERMINAL 16			3							
	Z263302000	BORNA DE PASO AZUL	BLUE THROUGH TERMINAL	1	1								
	P453026000	BORNE TIER 10 WPE-10103.O	TERMINAL TIER 10 WPE-10103.O	1	1								
	Z263303000	TOPE FINAL	END STOP	1	1								
	Z683097000	BORNA PASO WDU16 10204.8	STEP TERMINAL WDU16 10204.8			1							
	Z683070000	BORNA A TIERRA WEIDMULLER	TERMINAL TO EARTH WEIDMULLER			1							
	Z683096000	TOPE FINAL WEW35 10590.0	END STOP WEW35 10590.0			1							
	R663055000	GUIA CONTACTOR L-120	CONTACTOR GUIDE L-120	1	1	1							
	Q419005000	REMACHE 4x8 ALMG3 / ALUMINIO	RIVET 4X8 ALMG3 / ALUMINIUM	2	2	2							
22	Z203050000	CONTAC. SIRIUS 3R 230V.50-60	CONTACT. SIRIUS 3R 230V.50-60	2	2								
22	X183011000	CON.3RT1024-1AN20 230V 50H	CON.3RT1024-1AN20 230V 50H			2							
	R663055000	GUIA CONTACTOR L-120	CONTACTOR GUIDE L-120	1	1	1							
	Q419005000	REMACHE 4x8 ALMG3 / ALUMINIO	RIVET 4X8 ALMG3 / ALUMINIUM	2	2	2							
23	Z701135000	E.V.SIMP.220V COD.255.208	E.V.SIMP.220V COD.255.208	2	2	2							
	Z601156000	REGULADOR 8L RO. 254.034	REGULATOR 8L RED 254.034	2	2	2					11.11.13		
	12096626	REGULADOR 8 L (ROJO)	REGULATOR 8L RED	2	2	2						11.11.13	

MOD.		SARTEN BASCULANTE TILTING BRATT PANS		ZONA / ZONE		PARTE FUNCIONAL ELECTRICO FUNCTIONAL ELECTRICAL PART						PLANO DIAGRAM		C-2928	
ITEM	CODIGO REFERENCE	DENOMINACION	DENOMINATION	SBE9-10 PLUS I	SBE9-10 PLUS IM	SBE9-15 PLUS IM						ELIMINADO ELIMINATED	INTRODUCID. INTRODUCED	NOTAS	
24	X466119000	CONJUNTO TUBO LLENADO CR	FILLER PIPE ASSEMBLY CR	1	1	1									
	Q152004000	TORN. APLASTADO M5x13 A304	HEXAGONAL FLAT SCREW M5x13	2	2	2									
S/Nº	3676900000	TUBO GOMA NEGRA Ø 17*10	BLACK RUBBER PIPE 17*10	2	2	2									
	Q881308000	ABRAZADERA 8-14L	CLAMP 8-14L	2	2	2									
S/Nº	Z201106000	RACORD EN Y	Y-CONNECTION	4	4	4									
25	X042605000	TAPA CUBIERTA BORNAS 1M AD	TERMINAL COVER LID 1M AD	1	1										
25	X422620000	TAPA CUBIER. BORNAS 1,5 M AD	TERMINAL COVER LID 1,5 M AD			1									
	X402601000	ESCUADRA SEPARADOR RESIST.	RESIST. DIVIDER BRACKET	2	2	2									
	Q012032000	TORNILLO EXAGONAL M5x15 A304	HEXAGONAL BOLT M5x15 A304	5	5	5									
	Q262030000	ARANDELA GROW. A5 A304	WASHER GROW. A5 A304	5	5	5									
	Q419005000	REMACHE 4x8 ALMG3 / ALUMINIO	RIVET 4X8 ALMG3 / ALUMINIUM	3	3	3									
26	X142609000	AMARRE AISLANTE	INSULATION FASTENING	3	3	3									
27	X022612000	PROTECCION AGUA SBE-910 I AD	WATER PROTECT. SBE-910 I AD		1										
27	X082613000	PROTECCION AGUA SBE-915 I AD	WATER PROTECT. SBE-915 I AD			1									
28	X142656000	AISLANTE 730X520X5	INSULATION 730X520X5	1	1										
28	X083016000	BARLAN 575X515X5	BARLAN 575X515X5			2									
29	X143010000	RESISTENCIA SBE9-00	RESISTOR SBE9-00	6	6	9									
30	X142620000	AMARRE RESISTENCIAS SBE9-00	RESISTOR FASTENING SBE9-00	6	6	9									
	Q131555000	VARILLA ROSCADA M8x30	THREADED ROD M8X30	14	14	21									
	Q302024000	ARANDELA Ø44x9x1,5	WASHER Ø44x9x1.5	14	14	21									
	Q162050000	TUERCA EXAGONAL M8x1 INOX.	HEXAGONAL NUT M8x1 INOX.	14	14	21									
31	X042604000	CUBIERTA RESISTEN. 1 M AD	RESISTOR COVER 1 M AD	1	1										
31	X422619000	CUBIERTA RESISTENC. 1,5 M AD	RESISTOR COVER 1,5 M AD			1									
	Q131557000	VARILLA ROSCADA M8X50	THREADED ROD M8X50	4	4	6									
	Q302024000	ARANDELA Ø44x9x1,5	WASHER Ø44x9x1.5	4	4	6									
	Q162050000	TUERCA EXAGONAL M8x1 INOX.	HEXAGONAL NUT M8x1 INOX.	4	4	6									
32	X082642000	SOPORTE MICRO AD	MICRO BRACKET AD		1	1									
	Q221342000	REMACHE EXAGONAL M5	HEXAGONAL RIVET M5		2	2									
	Q012031000	TORNILLO EXAGONAL M5x10 A304	HEXAGONAL BOLT M5x10 A304		2	2									
	Q302022000	ARANDELA 16x6x1,2 A304	WASHER 16x6x1.2 A304		2	2									

MOD.	SARTEN BASCULANTE TILTING BRATT PANS	ZONA / ZONE	PARTE FUNCIONAL ELECTRICO FUNCTIONAL ELECTRICAL PART								PLANO DIAGRAM	C-2928

ITEM	CODIGO REFERENCE	DENOMINACION	DENOMINATION	SBE9-10 PLUS I	SBE9-10 PLUS IM	SBE9-15 PLUS IM						ELIMINADO ELIMINATED	INTRODUCID. INTRODUCED	NOTAS
33	X343021000	TRANSFORMADOR	TRANSFORMER		1	1								
	Q012031000	TORNILLO EXAGONAL M5x10 A304	HEXAGONAL BOLT M5x10 A304		4	4								
	Q302022000	ARANDELA 16x6x1,2 A304	WASHER 16x6x1.2 A304		4	4								
	X082632000	TAPA TRANSFORMADOR AD	TRANSFORMER COVER AD		1	1								
	Q012031000	TORNILLO EXAGONAL M5x10 A304	HEXAGONAL BOLT M5x10 A304		4	4								
	Q302022000	ARANDELA 16x6x1,2 A304	WASHER 16x6x1.2 A304		4	4								
	X082631000	CAJA TRANSFORMADOR AD	TRANSFORMER BOX AD		1	1								
	Q012031000	TORNILLO EXAGONAL M5x10 A304	HEXAGONAL BOLT M5x10 A304		4	4								
	Q302022000	ARANDELA 16x6x1,2 A304	WASHER 16x6x1.2 A304		4	4								
	X082633000	ESCUA. AMARRE TAPA TRANS. AD	TRANSF. COVER FAST. BRACKE		1	1								
	Q419005000	REMACHE 4x8 ALMG3 / ALUMINIO	RIVET 4X8 ALMG3 / ALUMINIUM		4	4								
34	X343022000	PUENTE RECTIFICADOR FB 3502	RECTIFIER BRIDGE FB 3502		1	1								
35	X022106000	BOTON PULSADOR	PRESS BUTTON		1	1								
	X022107000	CUERPO PULSADOR	PRESS BUTTON BODY		1	1								
	X022136000	PROTECTOR PULSADOR	PRESS BUTTON PROTECTOR		1	4								
	X022137000	MARCO PROTECTOR PULSADOR	PRESS BUTTON PROTEC. MARK		1	4								
	X022109000	INTERRUPTOR-PULSADOR	PRESS BUTTON SWITCH		1	1								
	X082630000	SOPORTE PULSADOR AD	BUTTON SUPPORT AD		1	1								
	X082638000	TOPE PULSADOR AD	PRESS BUTTON STOP AD		1	1								
	Q012032000	TORNILLO EXAGONAL M5x15 A304	HEXAGONAL BOLT M5x15 A304		4	4								
	Q262030000	ARANDELA GROW. A5 A304	WASHER GROW. A5 A304		4	4								
	Q162030000	TUERCA EXAGONAL M5	HEXAGONAL NUT M5		4	4								

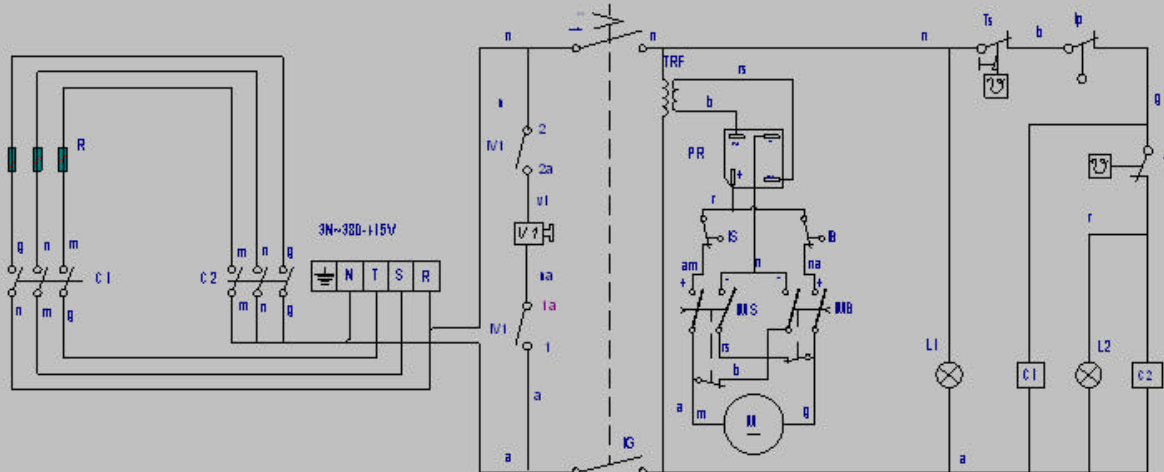
MOD.		SARTEN BASCULANTE TILTING BRATT PANS		ZONA / ZONE		VARIOS / MISCELLANEOUS						PLANO DIAGRAM		
ITEM	CODIGO REFERENCE	DENOMINACION	DENOMINATION	SBE9-10 PLUS I	SBE9-10 PLUS IM	SBE9-15 PLUS IM						ELIMINADO ELIMINATED	INTRODUCID. INTRODUCED	NOTAS
	X046502000	FOLLETO DE INSTRUC.SBE900 AD	INSTRUCT. LEAFLET SBE900 AD	1	1	1								
	X403002000	ESQUEMA TEORICO ADHESIVO	THEOR. DIAGRAM LABEL			1								HC-75708
	X483003000	PLANO DE MONTAJE SGE7-10	ASSEMBLY PLAN SGE7-10	1	1	1								HC-80160
	X463007000	LEYENDA SARTEN BASCULANTE	TILTING PAN LEGEND	1	1	1								HC-83262
	X143015000	CABLEADO SBE	WIRING SBE	1	1	1								
	X143004000	CABLEADO RESISTENCIAS	RESISTOR WIRING	1	1									
	X143016000	CABLE. REGLETA CONTACTOR 10	CABLE. CONTACTOR STRIP 10	2	2									
	X423005000	CABLE. REGLETA CONTACTOR 15	WIRING. CONTACTOR STRIP 15			2						13.02.12		
	12023614	CABLE. REGLETA CONTACTOR	WIRING CONTACTOR STRIP			2							13.02.12	
	X283000000	CABLEADO MOTOR	MOTOR WIRING		1	1								
	X463006000	CABLEADO ENTRADA DE AGUA	WATER INPUT WIRING	1	1	1								
	X363018000	CABLE MANGUERA 3X2.5 FE-6-7	HOSE CABLE 3X2.5 FE-6-	1	1									
	J243009000	CABLE MANGUERA 3X6	HOSE CABLE 3X6			1								
	U333003000	CABLE MASA ENCENDEDOR	LIGHTER EARTH CABLE			1								

MOD.	COCINAS / RANGES		ZONA / ZONE	REPUESTOS RECOMENDADOS RECOMMENDED SPARE PART						PLANO DIAGRAM		NOTAS	
	ITEM	CODIGO REFERENCE	DENOMINACION	DENOMINATION	SBE9-10 PLUS I	SBE9-10 PLUS SI	SBE9-10 PLUS IM	SBE9-10 PLUS SIM	SBE9-15 PLUS IM	SBE9-15 PLUS SIM	ELIMINADO ELIMINATED		INTRODUCID. INTRODUCED
	8	X146136000	TUERCA HUSILLO	SPINDLE NUT	1	1					01.03.13		C-2926
	8	12046610	TUERCA HUSILLO	SPINDLE NUT	1	1						01.03.13	C-2926
	9	X146134000	HUSILLO GAMA 900	SPINDLE RANGE 900	1	1					01.03.13		C-2926
	9	12046627	HUSILLO GAMA 900 Tr 26x5	SPINDLE RANGE 900 Tr 26x5	1	1						01.03.13	C-2926
	14	X156139000	VOLANTE ELESA	FLYSHAFT ELESA	1	1							C-2926
	8	X146136000	TUERCA HUSILLO	SPINDLE NUT			1	1	1	1	01.03.13		C-2927
	8	12046610	TUERCA HUSILLO	SPINDLE NUT			1	1	1	1		01.03.13	C-2927
	9	X146134000	HUSILLO GAMA 900	SPINDLE RANGE 900			1	1	1	1	01.03.13		C-2927
	9	12046627	HUSILLO GAMA 900 Tr 26x5	SPINDLE RANGE 900 Tr 26x5			1	1	1	1		01.03.13	C-2927
	10	X126114000	JUNTA UNIVERSAL 107A	UNIVERSAL JOINT 107A			1	1	1	1			C-2927
	15	X346107000	ACOPLAMIE. ELASTICO LOVEJOY	ELASTIC LOVEJOY COUPLING			1	1	1	1			C-2927
	17	X343020000	MOTORREDUCTOR (BOSCH)	GEAR MOTOR (BOSCH)			1	1	1	1			C-2927
	4	R693004000	CONMUTADOR DE FUNCIONES	FUNCTIONS SWITCH	1	1	1	1	1	1			C-2928
	5	X143018000	PILOTO AMBAR SARTEN	FRYING PAM AMBER PILOT	1	1	1	1	1	1	01.02.13		C-2928
	5	12024669	PILOTO AMBAR Ø18	AMBER PILOT Ø18	1	1	1	1	1	1		01.02.13	C-2928
	S/Nº	X143017000	PILOTO VERDE SARTEN	GREEN FRYPAN PILOT	1	1	1	1	1	1	01.02.13		C-2928
	S/Nº	12047390	PILOTO VERDE 230V AC 8KW 16M	GREEN PILOT 230V AC 8KW 16M	1	1	1	1	1	1		01.02.13	C-2928
	10	R612103000	TERMOSTATO LIMITADOR	THERMOSTAT LIMITER	1	1	1	1	1	1			C-2928
	11	X163007000	CONMUTADOR ACOUPLE TERMOS	THERMOSTAT CONNECT SWITCH	1	1	1	1	1	1			C-2928
	13	X153000000	TERMOSTATO 50-310 C	THERMOSTAT 50-310 C	1	1	1	1	1	1			C-2928
	16	X343015000	MICRORRUPTOR 32280001	MICROSWITCH 32280001	1	1	3	3	3	3	03.10.11		C-2928
	16	12040850	MICRORRUPTOR 250V AC16A VDE	MICROSWITCH 250V AC16A VDE	1	1	3	3	3	3		03.10.11	C-2928
	23	Z701135000	E.V.SIMP.220V COD.255.208	E.V.SIMP.220V COD.255.208	2	2	2	2	2	2			C-2928
	29	X143010000	RESISTENCIA SBE9-00	RESISTOR SBE9-00	6	6	6	6	9	9			C-2928
	33	X343021000	TRANSFORMADOR	TRANSFORMER			1	1	1	1			C-2928
	34	X343022000	PUENTE RECTIFICADOR FB 3502	RECTIFIER BRIDGE FB 3502			1	1	1	1			C-2928
	35	X022106000	BOTON PULSADOR	PRESS BUTTON			1	1	1	1			C-2928

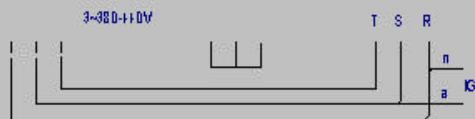


# SBE9 -10M

# SBE9 -15



a: azul	a: bleu	a: blue	a: blau	a: azzurra
m: marron	m: marron	m: brown	m: braun	m: marrone
n: negro	n: noir	n: black	n: schwarz	n: nero
r: rojo	r: rouge	r: red	r: rot	r: rosso
b: blanco	b: blanc	b: white	b: weiss	b: bianco
g: gris	g: gris	g: grey	g: grau	g: grigio
rs: rosa	rs: rose	rs: pink	rs: rosa	rs: rosa
am: amarillo	am: jaune	am: yellow	am: gelb	am: giallo
na: naranja	na: orange	na: orange	na: orange	na: arancione
ue: verde	ue: vert	ue: green	ue: grün	ue: verde



C1, C2: Contacto de calentamiento  
B: Micro tope bajada

MB: Pulsador bajada  
MS: Pulsador subida  
P: Micro seguridad  
IS: Micro tope subida  
MI: Interruptor de electroválvula  
L1: Lámpara marcha  
L2: Lámpara calentamiento  
M: Motor  
PR: Puente rectificador  
R: Resistencia calentamiento  
T: Termostato  
TRF: Transformador  
TS: Termostato seguridad  
VI: Electroválvula

C1, C2: Contacteur chauffage  
B: Micro bride descente

MB: Commmande de baisse  
MS: Commmande de montée  
P: Micro sécurité  
IS: Micro bride montée  
MI: Interrupteur d'électrovanne  
L1: Veilleuse mise en route  
L2: Veilleuse chauffage  
M: Moteur  
PR: Pont rectificateur  
R: Résistance chauffage  
T: Thermostat  
TRF: Transformateur  
TS: Thermostat sécurité  
VI: Électrovanne

C1, C2: Heating relay  
B: Descend stop switch

MB: Descend switch  
MS: Elevation switch  
P: Security switch  
IS: Heating top switch  
MI: Electrovalve switch  
L1: On light  
L2: Heating light  
M: Motor  
PR: Rectifier bridge  
R: Heating element  
T: Thermostat  
TRF: Transformer  
TS: Security thermostat  
VI: Electrovalve switch

C1, C2: Aufheizkontakt  
B: Mikro-Schalter unten

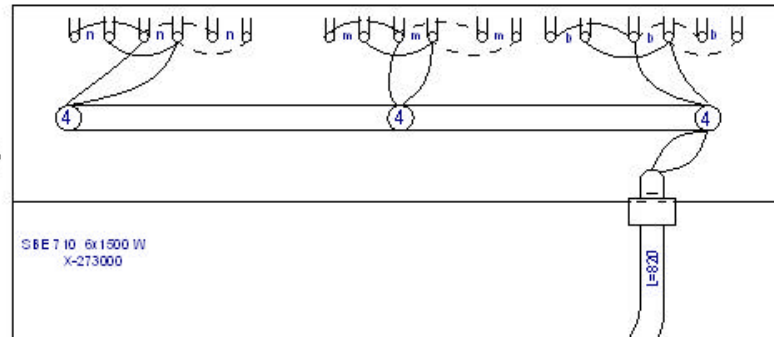
MB: Kippschalter unten  
MS: Kippschalter oben  
P: Mikro-Sicherheitschalter  
IS: Mikro-Schalter oben  
L1: Funktionsleuchte  
L2: Erwärmungsluchte  
M: Motor  
PR: Richtileitbrücke  
R: Heizsystem  
T: Thermostat  
TRF: Transformator  
TS: Sicherheits thermostat  
VI: Electrovalvula

C1, C2: Contacteur riscaldamento  
B: Micro arresto discesa

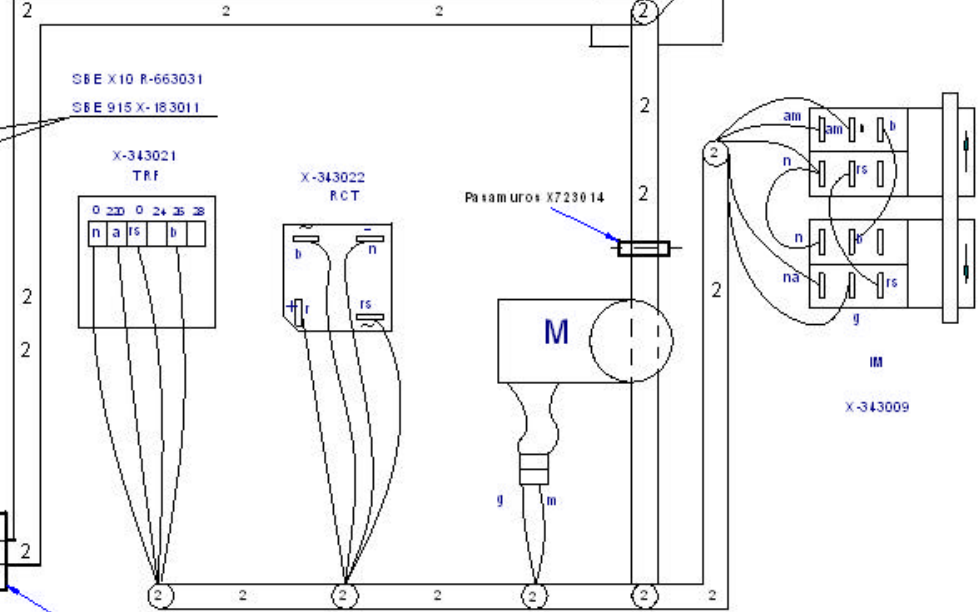
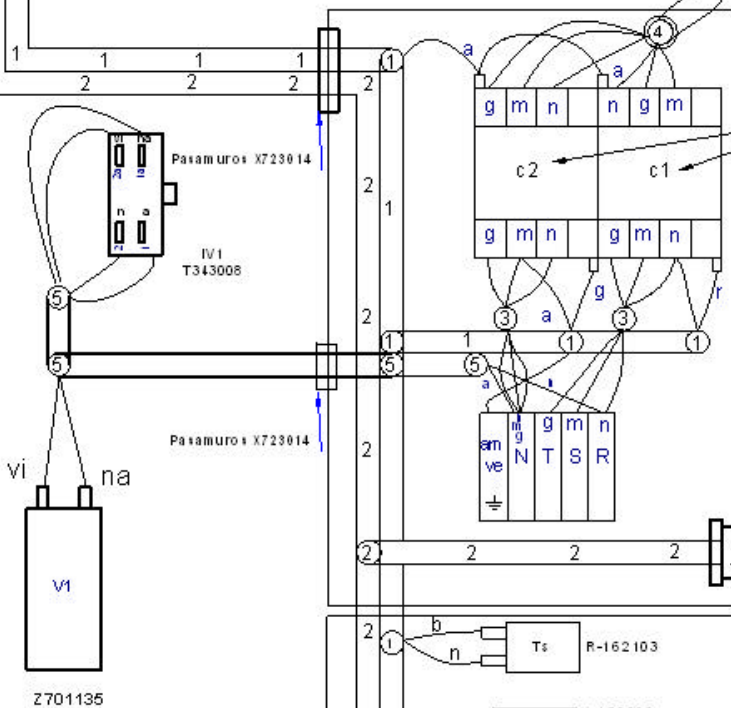
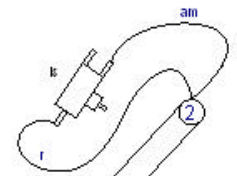
MB: Pulsante discesa  
MS: Pulsante salita  
P: Micro sicurezza  
IS: Micro arresto salita  
MI: Interruttore de elettrovalvula  
L1: Lampada funzionamento  
L2: Lampada riscaldamento  
M: Motore  
PR: Ponte rettificatore  
R: Resistenza riscaldamento  
T: Termostato  
TRF: Trasformatore  
TS: Termostato di sicurezza  
VI: Elettrovalvula

Esquema técnico SBE9				Poliéster mate	X-403002		
Nº	Pieza	Cart.	Material	Nº Clasificador	Acabado		
Nº	Modificación		Propuesta de	Fecha	To 6 metros de altura		
I	VI salida		carraícal	2008-08-08			
				<5%	50-400%		
				5-25%	>100%		
				25-40%	∅		
Dibujado		Finca	Fecha			Mecanizado en metal	
Proyectado		HO NTKI	9/5/2001				
Comprobado							
Escala		Fagor Industrial, Coop. Eki, Megafab				Plano número	
<h2>ZARTAGIN IRAULGARRIA</h2>						HC-75708 -01	
						Sustituye al N°	
						Sustituido por	
Para más detalles ir al estandar de fabricación							

Cablear con la arandela

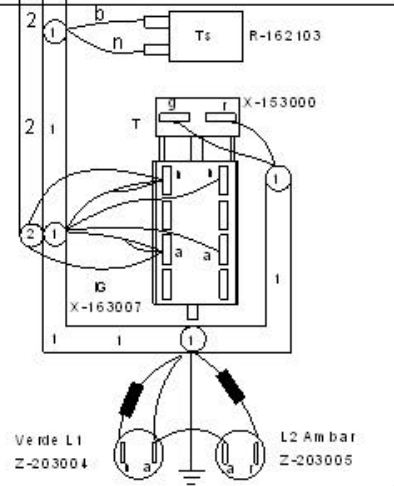


Instalación	SBE7-10
1	X143015
2	X283000
3	X143016
4	X143004
5	X483004



Pre las estopas :-Pre las estopa R033002  
 -Junta de goma R033026  
 -Contacto roa R033025

2701135



SGE7-10reko muntajeko plano a		X483003000				
Nº	Pieza	Cart.	Materiál	Nº Clasificación	Acabado	
Nº	Modificación	Propietario		Fecha	Tolerancias generales	
					<3±	50-100±
					5-25±	> 100±
					25-50±	∅±
Dibujado		Fecha	FAGOR		Mecanizado especial	
Proyectado		Fecha	Fagor Industrial, Coop. Eñ. Meritxue			
Comprobado		Fecha				
Escala						
<b>ZARTAGIN IRAULGARRIA</b>					Nº de pieza	
Fabricación de la empresa FAGOR					HC-80160	
					Sistema al N°	
					Sistema por	

Simb/LENG		ESPAÑOL	ENGLISH	FRANÇAIS	DEUTSCH	ITALIANO
C1, C2	=	Contactador Calentamiento	Contacteur Chauffe	Heating Contactor	Heizschütz	Contatore Riscaldamento
CN	=	Control de Nivel de agua	Control of water Level	Commande de niveau d'eau	Steuerung des Wasserspiegels	Controllo del livello d'acqua
E	=	Generador de Chispa	Spark generator	Générateur d'étincelle	Funkengenerator	Generatore della scintilla
IB	=	Micro tope bajada	Microswitch of lowered Limit	Microcontact de la limite abaissée	Mikroschalter der gesenkten Begrenzung	Microinterruttore del limite abbassato
IG	=	Interruptor general	General switch	Commutateur général	Allgemeiner Schalter	Interruttore generale
IGV	=	Interruptor electrovalvulas de agua	Switch electrovalvula water	Commutez l'eau d'electrovalvula	Schalten Sie electrovalvula Wasser	Commuti l'acqua di electrovalvula
IE	=	Pulsador de Encendido	Ignition Switch	Commutateur d'allumage	Zündung-Schalter	Interruttore di accensione
IMB	=	Pulsador bajada	lowered switch	commutateur abaissé	gesenkter Schalter	interruttore abbassato
IMS	=	Pulsador subida	Raised switch	Commutateur augmenté	Angehobener Schalter	Interruttore sollevato
IP	=	Micro seguridad	security microswitch	microcontact de sécurité	Sicherheitsmikroschalter	microinterruttore di sicurezza
IS	=	Micro tope subida	Microswitch of rise Limit	Microcontact de la limite d'élévation	Mikroschalter der Aufstieg Begrenzung	Microinterruttore del limite di aumento
L1	=	Lámpara marcha	Operation Light	Lumière d'opération	Betriebs-Licht	Luce di funzionamento
L2	=	Lámpara calentamiento	Heating Light	Lumière de chauffage	Heizungs-Licht	Luce del riscaldamento
M	=	Motor de elevacion	Motor of elevation	Moteur d'altitude	Motor des Aufzugs	Motore dell'altezza
P	=	Presostato de Camara	Water Level Switch	Commutateur de niveau d'eau	Wasserspiegel-Schalter	Interruttore del livello d'acqua
PR	=	Puente rectificador	Electrical bridge rectifier	Pont redresseur électrique	Elektrischer Brückengleichrichter	Raddrizzatore a ponte elettrico
R	=	Resistencia Calentamiento.	Résistance Chauffe	Heating Resistors	Widerstand Aufheizung	Resistenza Riscaldamento
RE	=	Regulador Energia	Regulator of Energy	Régulateur d'énergie	Regler von Energie	Regolatore di energia
T	=	Termostato	Thermostat	Thermostat	Thermostat	Termostato
TRF	=	Transformador	Transformer	Transformateur	Transformator	Trasformatore
TS	=	Termostato de seguridad	Security Thermostat	Thermostat de sécurité	Sicherheits-Thermostat	Termostato di sicurezza
TRP	=	Termopar	Thermocouple	Thermocouple	Thermoelement	Termocoppia
VG1, VG2	=	ElectroVálvula gas	Electrical gas valve	Clapet à gaz électrique	Elektrisches Gichtventil	Valvola a gas elettrica
V1	=	Valvula Agua CALIENTE	ElectroValve of Hot Water	Électrovalve d'eau chaude	Elektroventil des Heißwassers	Elettrovalvola di acqua calda
V2	=	Valvula Agua FRIA	ElectroValve of cold Water	Électrovalve d'eau froide	Elektroventil des kalten Wassers	Elettrovalvola di acqua fredda
V3	=	Valvula Agua Caldera	electrovalve of water boiler	électrovalve de chauffe-eau	Elektroventil des Warmwasserboilers	elettrovalvola del reattore ad acqua
	=	<b>COLORES</b>	<b>COLOUR</b>	<b>COULEURS</b>	<b>FARBEN</b>	<b>COLORE</b>
a	=	Azul	Blue	Bleu	Blau	Blu
am	=	Amarillo	Yellow	Jaune	Gelb	Giallo
am/ve	=	Amarillo/verde	Yellow / green	Jaune / vert	Gelb/grün	Giallo/verde
b	=	Blanco	White	Blanc	Weiß	Bianco
g	=	Gris	Grey	Gris	Grau	Grigio
m	=	Marrón	Brown	Marron	Braun	Marrone
n	=	Negro	Black	Noir	Schwarz	Nero
na	=	Naranja	Orange	Orange	Orange	Arancio
r	=	Rojo	Red	Rouge	Rot	Rosso
rs	=	Rosa	Pink	Rose	Rosa	Roseo
ve	=	Verde	Green	Vert	Grün	Verde
vi	=	Violeta	Purple	Violet	Violett	Viola

**X463007000**