



GASTROPARTS

Graef

- [EN]** Equipment
- [DE]** Geräte
- [ES]** Aparatos
- [FR]** Équipement
- [IT]** Attrezzature
- [PL]** Urządzenia
- [RU]** Оборудование

✉ gastroparts@gastroparts.com

☎ +48 56 657 00 66

📘 fb.com/gastroparts.global

GASTROPARTS.COM





switches and momentary switches

rocker/momentary rocker switches

30x22mm



1

Part No.	348113	Ref. No.	19032
description	momentary rocker switch mounting measurements 30x22mm red/green 1NO/1NC 250V 16A momentary/momentary connection male faston 6.3mm ambient temperature max. 125°C protection IP65 with cover cap		

push/momentary push switches

ø22mm



1

Part No.	348196	Ref. No.	143822
description	momentary push switch mounting measurements ø22mm 1NO/1NC/indicator light connection male faston 2.8mm		



1

Part No.	348138	Ref. No.	50151
description	momentary push switch mounting ø 22mm black/white 1NO/1NC/indicator light 230V 10A 0-1 connection screw		

control equipment

SIEMENS

3SB series ø22mm new

push buttons



1

Part No.	348021	Ref. No.	143765 901 901+902
description	double momentary switch mounting measurements ø22mm 1NO/1NC/indicator light connection male faston 2.8mm 6A type 3SA8 810-OEB11 rated 380V		

relays

power relays

with bracket mounting



1

Part No.	380312	Ref. No.	81026 908 913
description	power relays FINDER 230VAC 10A 3CO connection male faston 4.8mm bracket mounting dimensions 52x32.2x36.5mm manuf. no. 60.63.8.230.0000		

electronics

PCBs



1

Part No.	403638	Ref. No.	50113
description	PCB slicer SO22023/SO27523		



1

Part No.	403660	Ref. No.	19062
description	PCB slicer suitable for GRAEF		



1

Part No.	403605	Ref. No.	143754
description	PCB slicer suitable for GRAEF repair set		



equipment-specific units

for slicers

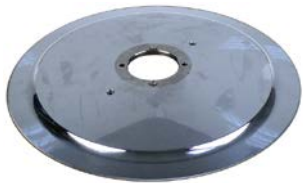
blades

standard



1

Part No.	698191	Ref. No.	3000434 3060434 401
description	slicing machine blade ED ø 300mm seat ø 57mm 4 hole ID ø 254mm H 22.5mm C45 standard		



1

Part No.	697375	Ref. No.	3300434
description	slicing machine blade ED ø 330mm seat ø 57mm 4 hole ID ø 270mm H 23mm 100Cr6 standard		

sharpener units

sharpener units



1

Part No.	698777	Ref. No.	50115
description	blade sharpener detachable Solido 220 suitable for GRAEF		



1

Part No.	698778	Ref. No.	50134
description	blade sharpener detachable Solido 275 suitable for GRAEF		

grindstones



1

Part No.	697575	Ref. No.	50116
description	grindstone ø 45mm thickness 10mm bore ø 8mm grained coarse with bevel, without hub		



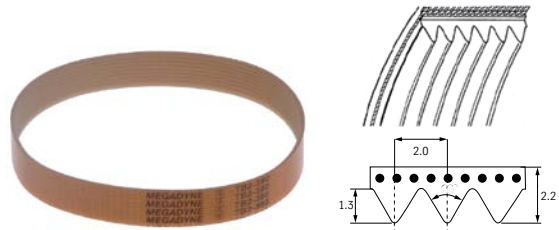
1

Part No.	697574	Ref. No.	50117
description	grindstone ø 45mm thickness 10mm bore ø 8mm grained fine with bevel, without hub		

transmission technology and ball bearings

drive belts

poly-v belts



1

Part No.	697367	Ref. No.	50114
description	poly-v belt grooves 8 W 16mm L 330mm profile TB2		

GASTROPARTS.COM

