



GASTROPARTS

Espressa

- [EN]** Coffee machines
- [DE]** Kaffeemaschinen
- [ES]** Cafeteras
- [FR]** Cafetières
- [IT]** Macchine da caffè
- [PL]** Ekspresy do kawy
- [RU]** Кофеварки

✉ gastroparts@gastroparts.com

☎ +48 56 657 00 66

📘 fb.com/gastroparts.global

GASTROPARTS.COM



Solenoid valves

Scem/Parker



| Item | Order | Description |
|------|--------|-----------------------------|
| 1 | 370057 | cpl., 3 ways, 230V AC |
| 2 | 370062 | Solenoid square base |
| 3 | 370206 | cpl., 1/8", 2 ways, 230V AC |
| 4 | 371029 | Magnetic coil, 230V AC |

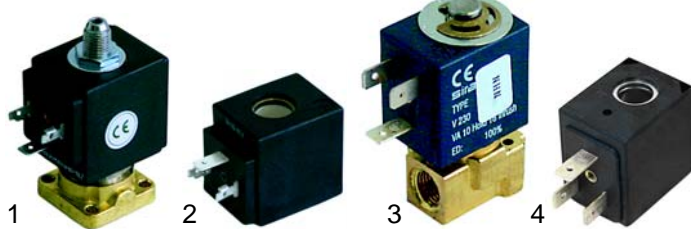
Lucifer



| Item | Order | Description |
|------|--------|------------------------|
| 1 | 370053 | cpl., 3 ways, 230V AC |
| 2 | 370061 | Solenoid square base |
| 3 | 371031 | Magnetic coil, 230V AC |

ODE

Sirai



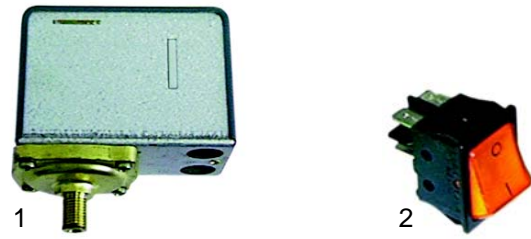
| Item | Order | Description |
|------|--------|-----------------------------|
| 1 | 370203 | cpl., 3 ways, 230V AC |
| 2 | 371150 | Magnetic coil, 230V AC |
| 3 | 370168 | cpl., 1/8", 2 ways, 230V AC |
| 4 | 371071 | Magnetic coil, 230V AC |

Solenoid valve accessories



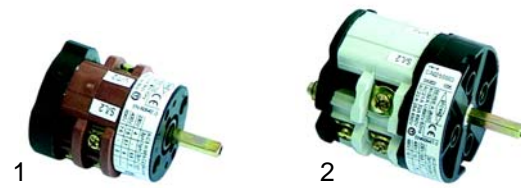
| Item | Order | Description |
|------|--------|----------------|
| 1 | 371091 | Plug/small |
| 2 | 371090 | Plug/big |
| 3 | 371095 | O-ring/viton |
| 4 | 371100 | O-ring/Silicon |

Switches

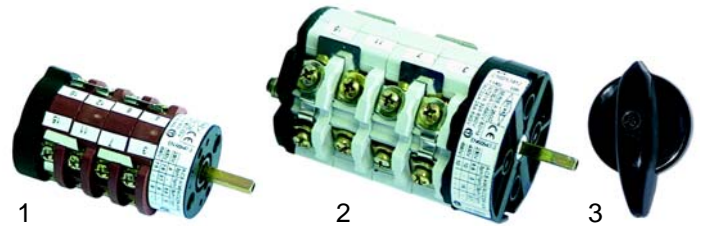


| Item | Order | Description |
|------|--------|--------------------------|
| 1 | 541021 | Pressure switch, 3 poles |
| 2 | 301002 | Switches, 2 poles |

Main switches

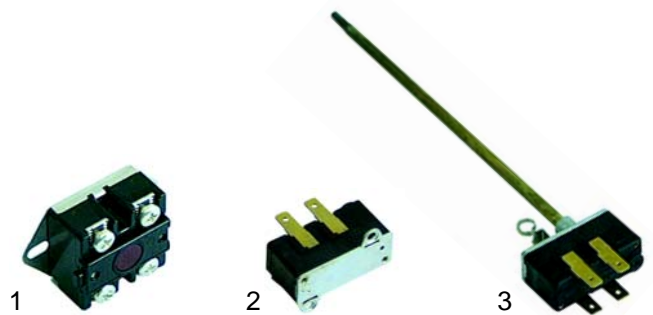


| Item | Order | Description |
|------|--------|-------------|
| 1 | 346104 | 0 - I, 20A |
| 2 | 346105 | 0 - I, 32A |

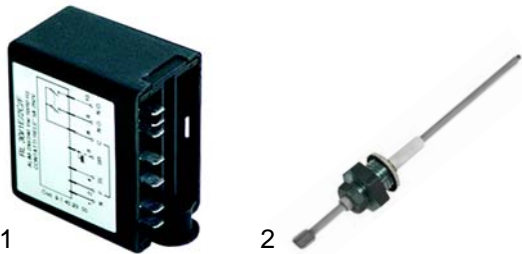


| Item | Order | Description |
|------|--------|-----------------|
| 1 | 346100 | I - 0 - II, 20A |
| 2 | 346101 | I - 0 - II, 32A |
| 3 | 110205 | Knob |

Thermostats



| Item | Order | Description |
|------|--------|--------------|
| 1 | 390431 | 2 poles, 40A |
| 2 | 390434 | 2 poles, 20A |
| 3 | 390433 | 2 poles, 2A |



| Item | Order | Description |
|------|--------|--------------------|
| 1 | 400019 | RL30/1E-2C/F, 230V |
| 2 | 400020 | Level probe |

Flowmeter



| Item | Order | Description |
|------|--------|-------------------|
| 1 | 400004 | Flowmeter, 1/4" |
| 2 | 400256 | Plug |
| 3 | 400257 | Flowmeter turbine |
| 4 | 400258 | Case gasket |

Key push buttons



| Item | Order | Description |
|------|--------|--------------------------------|
| 1 | 400506 | Key push button |
| 2 | 400544 | Gicar, 1 - 3 groups, 9.5.21.12 |

Elements



| Item | Order | Description |
|------|--------|----------------------------|
| 1 | 417043 | 1 group, 1800W, 230V/400V |
| 2 | 417154 | 1 group, 2700W, 230V/400V |
| 2 | 417042 | 2 groups, 2600W, 230V/400V |
| 2 | 417155 | 2 groups, 3000W, 230V |
| 3 | 417156 | 3 groups, 3700W, 230V |
| 3 | 417157 | 3 groups, 5000W, 230V |
| 4 | 528001 | Gasket |

Manometer



| Item | Order | Description |
|------|--------|------------------------|
| 1 | 541223 | Manometer/double scale |

Valves

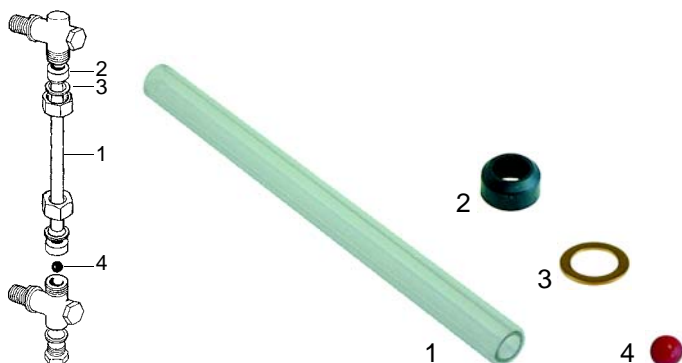


| Item | Order | Description |
|------|--------|------------------------------------|
| 1 | 529312 | Safety valve, 1,8 bar, 3/8" |
| 2 | 529316 | Safety valve/sealed, 1,8 bar, 3/8" |
| 3 | 529303 | Empty valve/stainless steel, 1/4" |
| 4 | 529304 | Empty valve, 1/4" |
| 5 | 529361 | Cu-gasket, 1/4" |
| 6 | 529349 | Cu-gasket, 3/8" |



| Item | Order | Description |
|------|--------|------------------------------|
| 1 | 528790 | Non-return valve, 3/8" |
| 2 | 528936 | Expansion valve |
| 3 | 528937 | Expansion valve (adjustable) |

Level glass

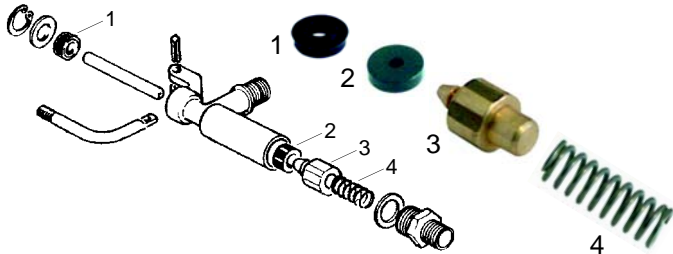


| Item | Order | Description | Model | OEM |
|------|--------|--------------------------|-------|-------|
| 1 | 529407 | Level glass, 170 x 11 mm | | 21300 |
| 2 | 529408 | Level glass gasket | | 12200 |
| 3 | 529862 | Pressure washer | | 25652 |
| 4 | 529355 | Plastic ball | | 15300 |

Water inlet valve



| Item | Order | Description |
|------|--------|------------------------|
| 1 | 529632 | Water inlet valve/cpl. |
| 2 | 111092 | Handle |



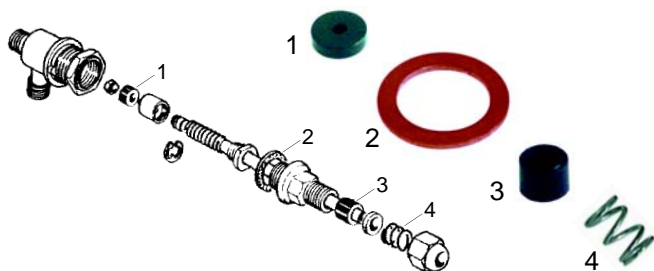
| Item | Order | Description |
|------|--------|---------------|
| 1 | 528309 | Gasket |
| 2 | 528308 | Piston gasket |
| 3 | 528310 | Piston |
| 4 | 528311 | Spring |

Taps



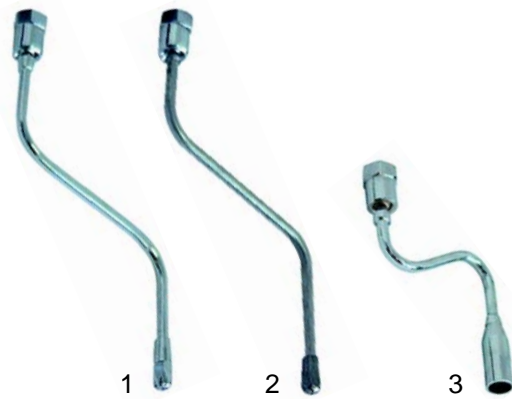
| Item | Order | Description |
|------|--------|------------------------|
| 1 | 529621 | Tap/cpl. (steam/water) |
| 2 | 111090 | Knob/cpl. (steam) |
| 3 | 111156 | Knob (water) |

Taps



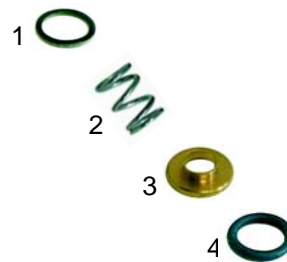
| Item | Order | Description |
|------|--------|----------------------|
| 1 | 528308 | Gasket, 15 x 4 x 4mm |
| 2 | 528312 | Gasket |
| 3 | 528313 | Shaft gasket |
| 4 | 529719 | Spring |

Pipes



| Item | Order | Description |
|------|--------|----------------------------|
| 1 | 529775 | Steam pipe |
| 2 | 529773 | Steam pipe/stainless steel |
| 3 | 529860 | Water pipe |

Pipe accessories

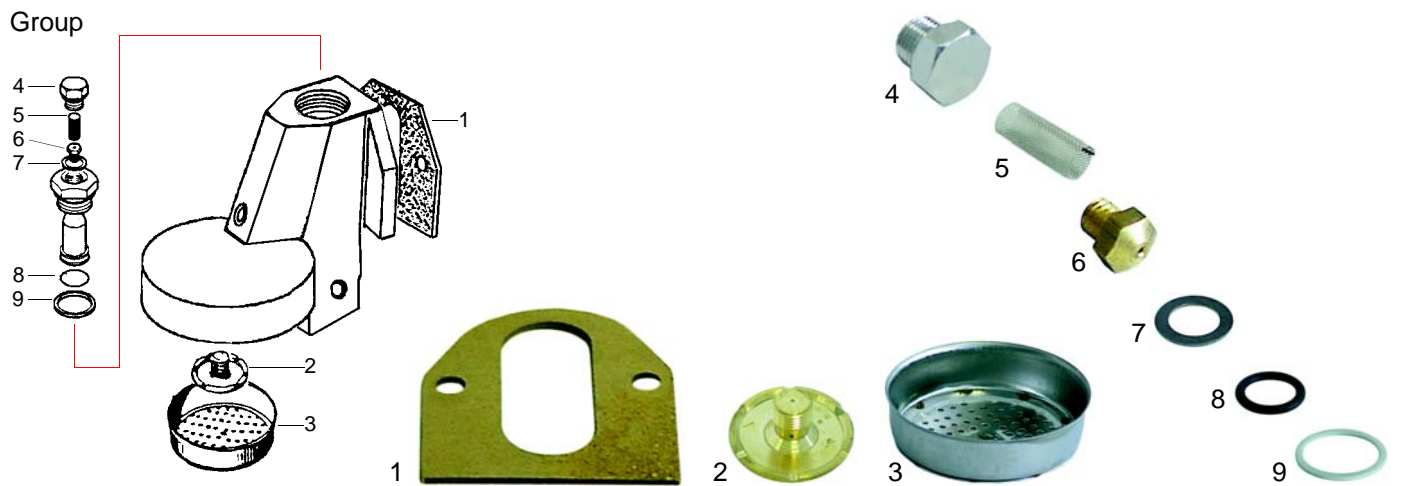


| Item | Order | Description |
|------|--------|------------------|
| 1 | 528210 | Gasket/klingerit |
| 1 | 528314 | Gasket/teflon |
| 2 | 529719 | Spring |
| 3 | 529718 | Pressure washer |
| 4 | 529412 | O-ring |

Drain tap



| Item | Order | Description |
|------|--------|-------------------------------|
| 1 | 528600 | Drain tap |
| 2 | 520072 | Outflow hose, 3/8", pack 5 m |
| 2 | 520036 | Outflow hose, 3/8", pack 30 m |



| Item | Order | Description | Item | Order | Description | Item | Order | Description |
|------|--------|--------------|------|--------|-------------|------|--------|-------------|
| 1 | 528138 | Group gasket | 4 | 528944 | Screw cap | 7 | 528945 | Gasket |
| 2 | 529081 | Divider | 5 | 528946 | Sieve | 8 | 528525 | Gasket |
| 3 | 529080 | Shower | 6 | 528947 | Jet | 9 | 528524 | Gasket |

Filter holder gaskets, filter



| Item | Order | Description | Item | Order | Description | Item | Order | Description |
|------|--------|--------------------------------------|------|--------|----------------------|------|--------|---------------|
| 1 | 528033 | Shim gasket, 71 x 68mm | 3 | 529012 | Filter, 1 cup (6g) | 5 | 529023 | Blank filter |
| 2 | 528030 | Filter holder gasket, 73 x57 x 8mm | 3 | 529011 | Filter, 1 cup (7g) | 6 | 529079 | Filter spring |
| 2 | 528031 | Filter holder gasket, 73 x57 x 8,5mm | 4 | 529014 | Filter, 2 cups (12g) | | | |
| 2 | 528032 | Filter holder gasket, 73 x57 x 9mm | 4 | 529013 | Filter, 2 cups (14g) | | | |

Filter holder



| Item | Order | Description | Item | Order | Description | Item | Order | Description |
|------|--------|--------------------------|------|--------|---------------------------|------|--------|---------------------------|
| 1 | 529058 | Filter holder, 3/8", M12 | 2 | 529068 | Filter holder handle, M12 | 3 | 529045 | Filter holder handle, M12 |

Spouts



| Item | Order | Description | Item | Order | Description |
|------|--------|-----------------------------|------|--------|-----------------------------------|
| 1 | 529002 | 3/8", 1 way, straight/short | 5 | 529004 | 3/8", 1 way, curved/closed |
| 2 | 529001 | 3/8", 1 way, straight/long | 6 | 529008 | 3/8", 2 ways, distance 44mm |
| 3 | 529005 | 3/8", 1 way, curved/short | 7 | 529007 | 3/8", 2 ways, distance 55mm/short |
| 4 | 529003 | 3/8", 1 way, curved/long | 8 | 529006 | 3/8", 2 ways, distance 55mm/long |

GASTROPARTS.COM

